



MECHANICAL

O.J. WHITE
TRANSFER-STORAGE
WAREHOUSE

120

KHUGHA

KINCAID AND ARNETT FIELD FEED AND FLOUR
BIDG.

156 CLAY ST., MORGANTOWN, MONONGALIA CO.,

W.V. PHOTO 1 OF 6

3/95



O.J. W.
TRANSFER

NO PARKING - CUSTOMERS - ONLY

KINCAID AND ARNETT FEED AND FLOUR BLDG.
156 CLAY ST., MORGANTOWN, MONONGALIA CO., W.V.
STOREFRONT DETAIL, 3/95, PHOTO 2 OF 6

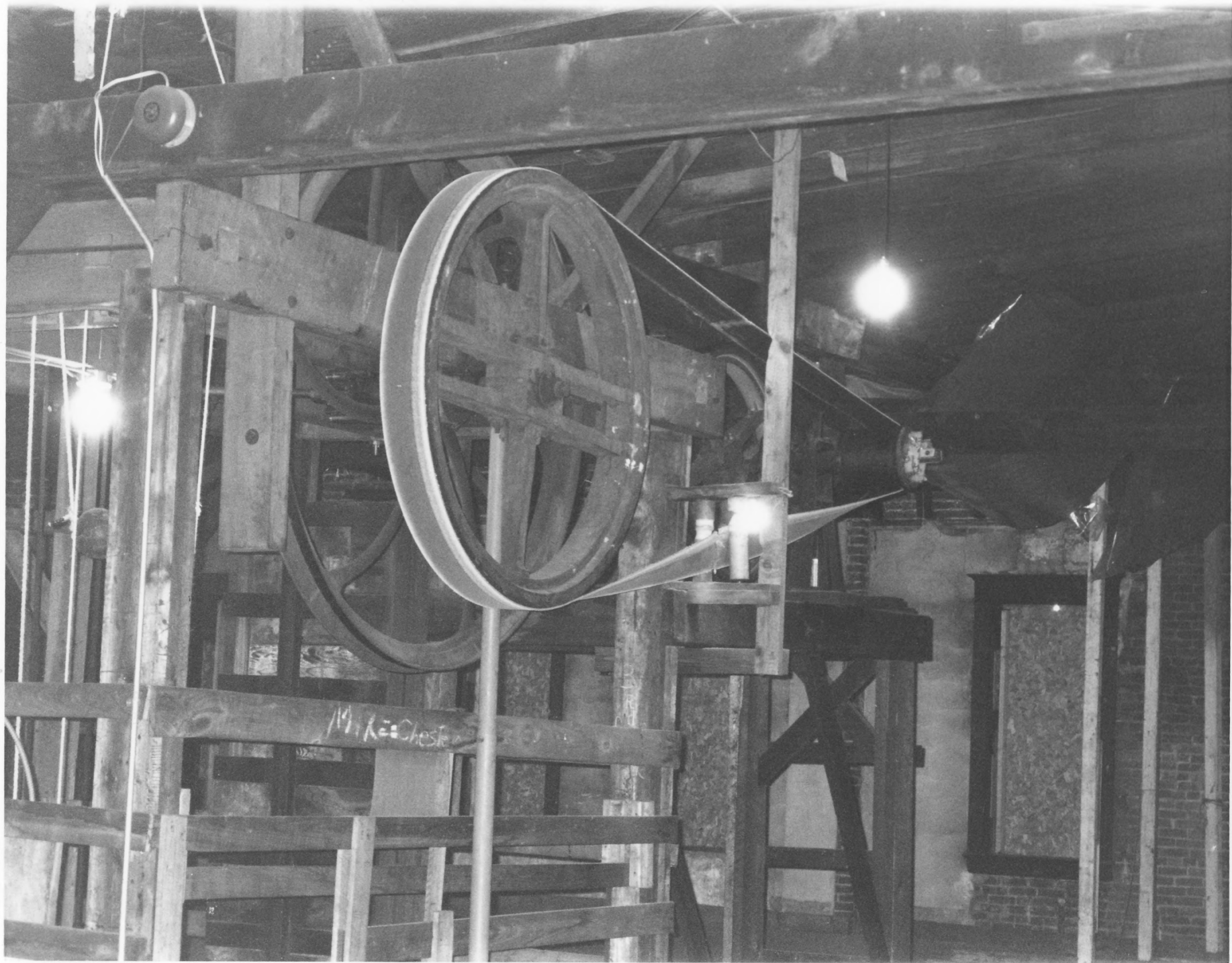


KINCAID AND ARNETT FEED AND FLOUR BLDG,
156 CLAY ST., MORGANTOWN, MONONGALIA CO., W.V.
REAR ELEV., PHOTO 3 OF 6. 3/95



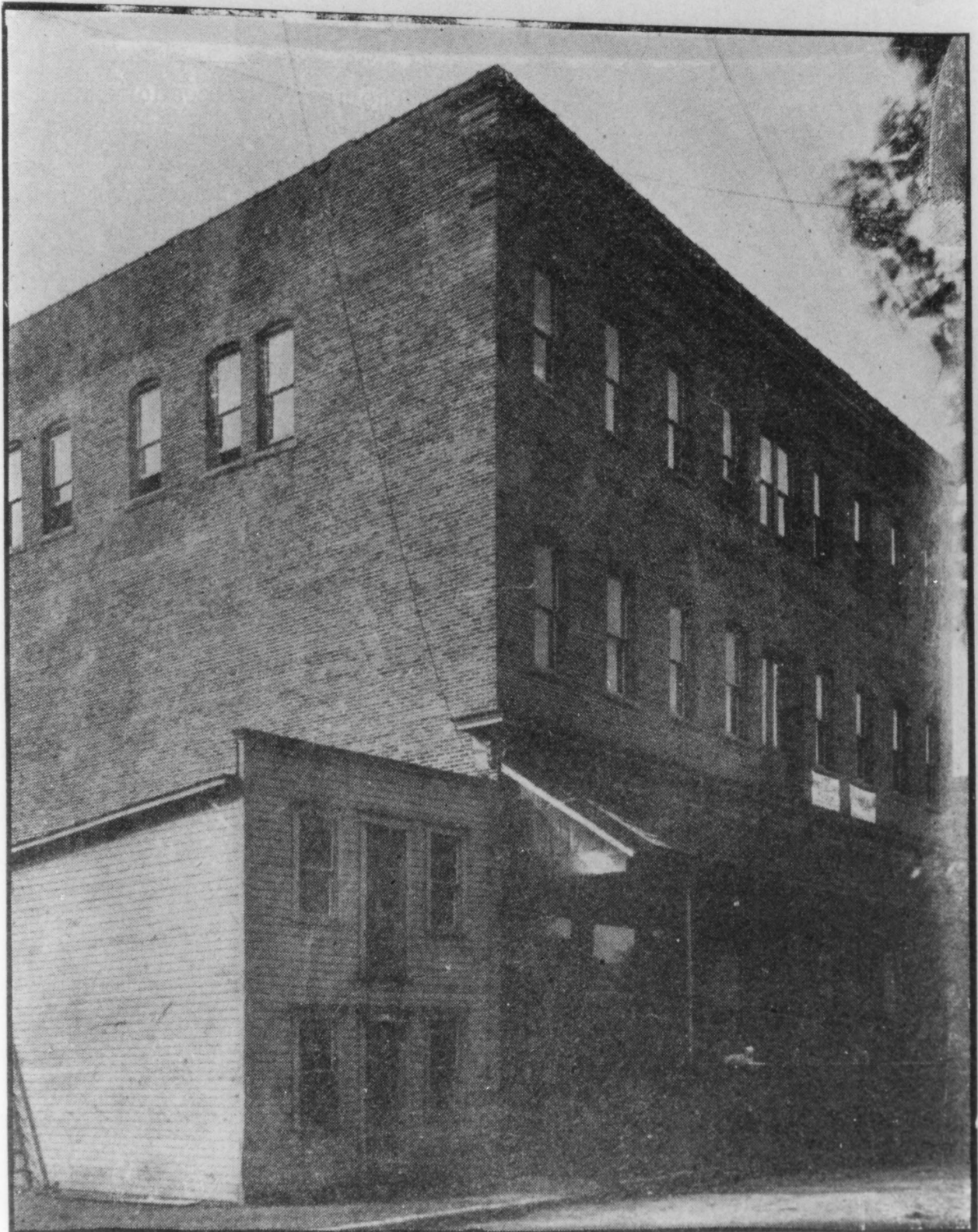
KINCAID AND ARNETT FEED AND FLOUR BLDG.
156 CLAY ST., MORGANTOWN, MONONGALIA CO., WV
STOOP DETAIL, PHOTO 4 OF 6

50E 3/95



KINCAID AND ARNETT FEED AND FLOUR BLDG.
156 CLAY ST., MORGANTOWN, MONONGALIA CO., W.V.
INTERIOR MACHINERY DETAIL, PHOTO 50F6. 3/95

SEMI-WATER GAS ENGINE MANUFACTURED BY
ROMISCH MANUFACTURING COMPANY.



KINCAID & ARNETT'S STORE AND WAREHOUSE.

KINCAID AND ARNETT FEED AND FLOUR BLDG.
156 CLAY ST., MORGANTOWN, MONONGALIA CO., WV
COPY OF HISTORIC PHOTOGRAPH, PHOTO 60F6, 3/95