



1. ST. THOMAS MANOR
2. CHARLES COUNTY, MARYLAND
3. GARY SMITH
4. 10/87
5. MARYLAND INDEPENDENT  
WALDORF, MARYLAND
6. MANOR HOUSE  
N. (FRONT) ELEVATION
7. 1/10



1. ST. THOMAS MANOR
2. CHARLES COUNTY, MARYLAND
3. J. R. RIVOIRE
4. 5/1088
5. MARYLAND SHPO
6. VIEW OF MANOR HOUSE FROM S.E. (GARDEN ELE.)
7. 2/10

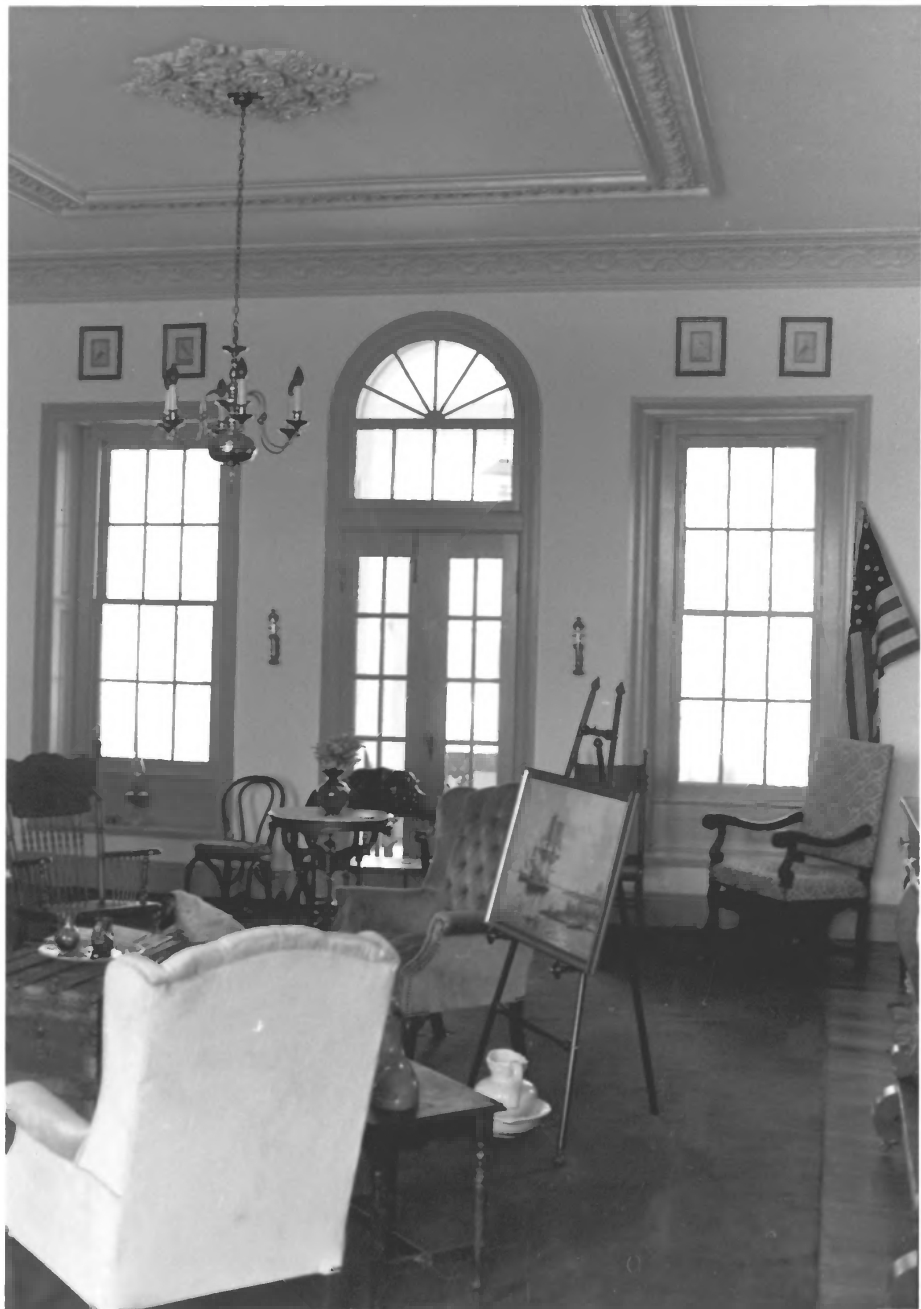


1. ST. THOMAS MANOR
  2. CHARLES CO. MARYLAND
  3. J.R. RIVOIRE
  4. 5/1988
  5. MARYLAND SHPO
  6. VAULTED PASSAGE BELOW  
E. WING OF MANOR HOUSE
1. 3/10



1. ST. THOMAS MANOR
2. CHARLES LOUNTY, MARYLAND
3. J.R. RIVOIRE
4. 5/1988
5. MARYLAND SHPO
6. BASE OF CA. 1870 STAIR, 1<sup>ST</sup>  
FLOOR, MANOR HOUSE
- T. 4/10





1. ST. THOMAS MANOR
2. CHARLES COUNTY, MARYLAND
3. J.R. RIVOIRE
4. 5/1988
5. MARYLAND SHPO
6. SECOND FLOOR DRAWING  
ROOM/HALL; MANOR HOUSE  
FACING S-\*
7. 5/10



1. ST. THOMAS MANOR
2. CHARLES COUNTY, MARYLAND
3. J.R. RIVOIRE
4. 5/1988
5. MARYLAND SHPO
6. ST. IGNATIUS CHURCH.  
CAMERA FACING NE
7. 6/10



1. ST. THOMAS MANOR
2. CHARLES COUNTY, MARYLAND
3. J. R. RIVOIRE
4. 5/1988
5. MARYLAND SHPD
6. ST. IGNATIUS CHURCH, INT. VIEW,  
CAMERA FACED E.
7. 7/10



1. ST. THOMAS MANOR
2. CHARLES COUNTY, MARYLAND
3. J. R. RIVOIRE
4. 5/1988
5. MARYLAND SHPO
6. ~~ENVIRONMENTAL~~ VIEW OF CEM. & RIVER  
CAMERA FACING W-SW
7. 8/10





1. ST. THOMAS MANOR
2. CHARLES COUNTY, MARYLAND
3. J.R. RIVOIRE
4. 5/10/88
5. MARYLAND SHPD
6. EA. 20TH C. BUNGALOW  
CAMERA FACING E-SE
7. 0/10



1. ST. THOMAS MANOR
2. CHARLES COUNTY, MARYLAND
3. J.R. RIVOIRE
4. 5/10/88
5. MARYLAND SHPO
6. TOBACCO BARN  
CAMERA FACING N-NE
7. 10/10