



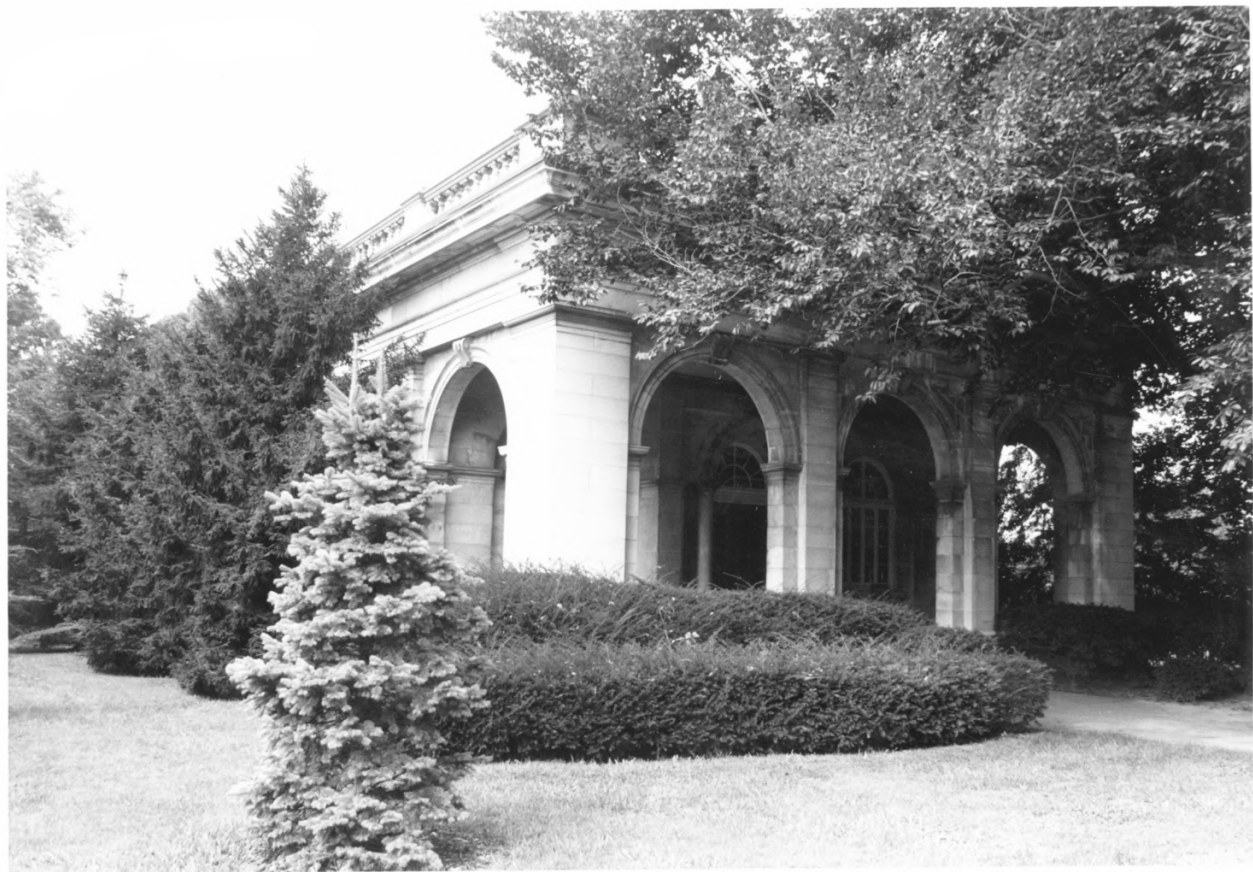
Cavehill Cemetary
701 Baxter Avenue
Louisville, Jefferson Ky.
Hugh Foshee, Landmarks
Commission 727 W. Main

Photo 1
Gatehouse.

*Jefferson
County*

6261 5 2 100
OCT 25 1979

DEC 11 1979



Cave Hill Cemetary
701 Baxter Avenue
Louisville, Jefferson Ky.
Hugh Foshee, Landmarks
Commission 727 W. Main

Photo 2 OCT 25 1979

Gatelodge.

DEC 11 1979

*Jefferson
County*



OCT 25 1979

Cave Hill Cemetary
701 Baxter Avenue
Louisville, Jefferson Ky.
Hugh Foshee, Landmarks
Commission 727 W. Main

Photo 3
Administration Building.

DEC 11 1979

Jefferson
County



OCT 25 1979

Cave Hill Cemetary
701 Baxter Avenue
Louisville, Jefferson Ky.
Hugh Foshee, Landmarks
Commission 727 W. Main

Photo 4
Lake .

Jefferson
County

DEC 1 1979



Cave Hill Cemetary
701 Baxter Avenue
Louisville, Jefferson Ky.
Hugh Foshee, Landmarks
Commission 727 W. Main

Photo 5
Rustic Shelter House.

OCT 25 1979

*Jefferson
County*

DEC 11 1979



Cave Hill Cemetary
701 Baxter Avenue
Louisville, Jefferson Ky.
Hugh Foshee, Landmarks
Commission 727 W. Main
Photo 6
Civil War section and
rostrum.

~~OCT 25 1979~~
OCT 25 1979

DEC 1 1979
Jefferson
County



GRAVE
1864

GRAVE
1864

GRAVE
1864

GRAVE
1864

GRAVE
1864

GRAVE
1864

GRAVE
1864

GRAVE
1864

Cave Hill Cemetery
Louisville, Jefferson Co., Ky.
Lee Walker October 1979
Kentucky Heritage Commission
Frankfort, Kentucky

Photo 6a

Civil War section--Confederate
graves.

OCT 25 1979

DEC 11 1979



Cave Hill Cemetary
701 Baxter Avenue
Louisville, Jefferson Ky.
Hugh Foshee, Landmarks
Commission 727 W. Main

Photo 7

B.F. Smith Mausoleum.

Jefferson
County

OCT 25 1914.

DEC 11 1979



Cave Hill Cemetary
701 Baxter Avenue
Louisville, Jefferson Ky.
Hugh Foshee, Landmarks
Commission 727 W. Main

Photo 8

Shannon Family Mausoleum.

Jefferson County

OCT 25 1979

DEC 11 1979



Cave Hill Cemetary
701 Baxter Avenue
Louisville, Jefferson Ky.
Hugh Foshee, Landmarks
Commission 727 W. Main

Jefferson County
OCT 25 1979

Photo 9

Vista of burial area.

DEC 11 1979



Cave Hill Cemetary
701 Baxter Avenue
Louisville, Jefferson Ky.
Hugh Foshee, Landmarks
Commission 727 W: Main

Photo 10
Tingley Fountain.

OCT 25 1979

DEC 11 1979

*Jefferson
County*



Cave Hill Cemetary
701 Baxter Avenue
Louisville, Jefferson Ky.
Hugh Foshee, Landmarks
Commission 727 W. Main

OCT 25 1979

Photo 11
Satterwhite Mausoleum.

DEC 11 1979

*Jefferson
County*



Cave Hill Cemetery
Louisville, Jefferson Co., Ky.
Lee Walker October 1979
Kentucky Heritage Commission
Frankfort, Kentucky

Photo 11a
Satterwhite Mausoleum.

DEC 11 1979

OCT 25 1979



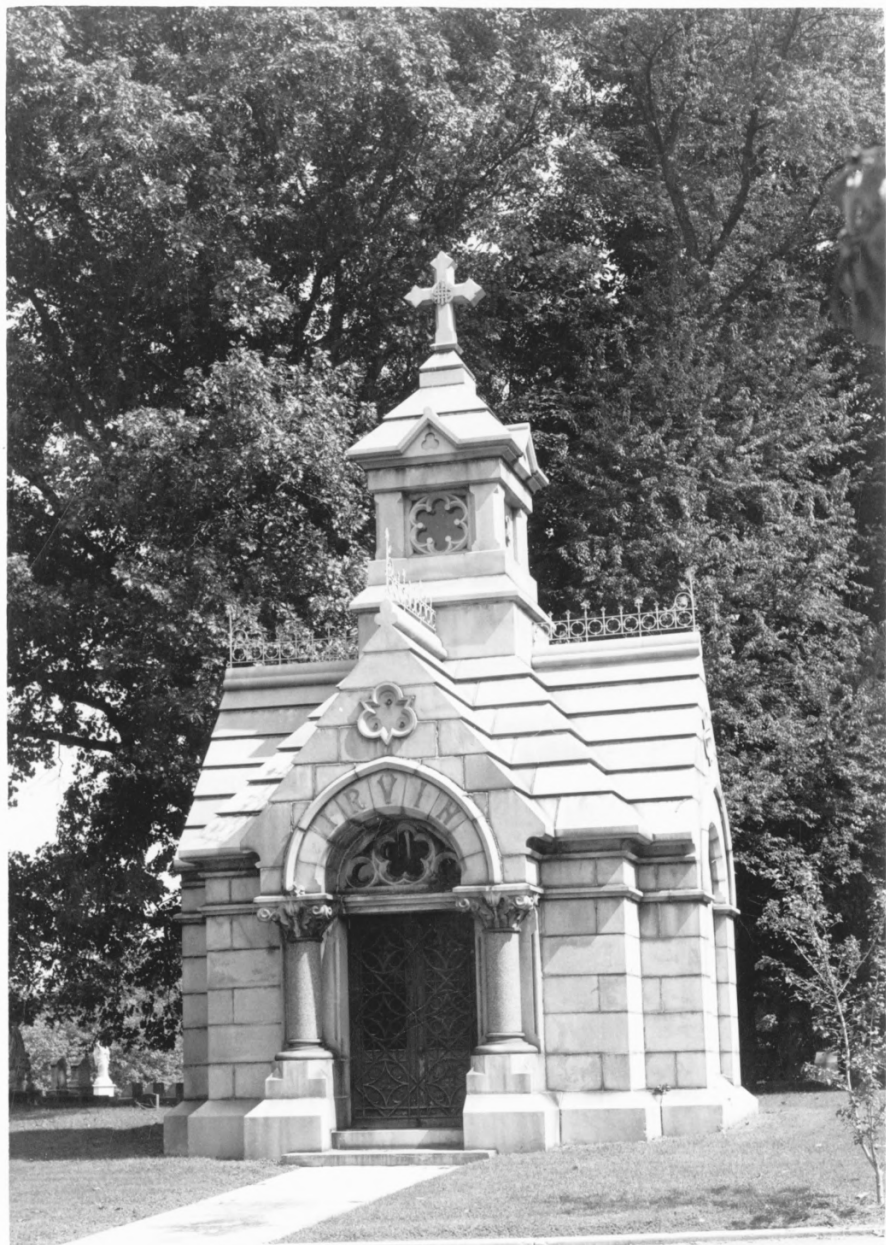
Cave Hill Cemetary
701 Baxter Avenue
Louisville, Jefferson Ky.
Hugh Foshee, Landmarks
Commission 727 W. Main

Jefferson County

Photo 12
Satterwhite Mausoleum
detail of sculpture.

DEC 11 1979

OCT 25 1970



Cave Hill Cemetery
Louisville, Jefferson Co., Ky.
Lee Walker October 1979
Kentucky Heritage Commission
Frankfort, Kentucky

Photo 13
Mausoleum.

OCT 25 1979

DEC 1 1 1979

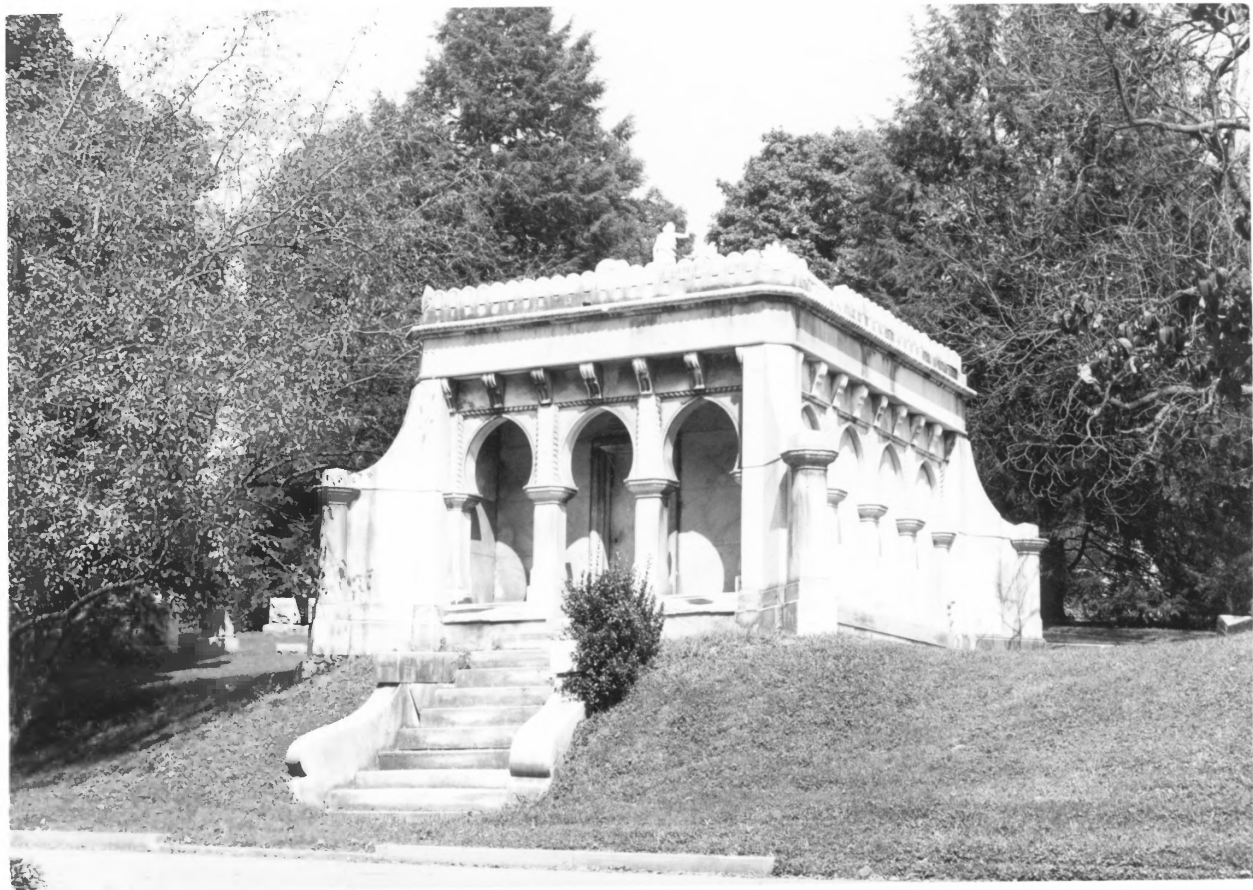
PAUL JONES



DEC 11 1979

Cave Hill Cemetery
Louisville, Jefferson Co., Ky.
Lee Walker October 1979
Kentucky Heritage Commission
Frankfort, Kentucky Photo 14
Mausoleum.

OCT 25 1979



DEC 11 1979

Cave Hill Cemetery
Louisville, Jefferson Co., Ky.
Lee Walker October 1979
Kentucky Heritage Commission
Frankfort, Kentucky Photo 15
Mausoleum.

OCT 25 1979



Cave Hill Cemetery
Louisville, Jefferson Co., Ky.
Lee Walker October 1979
Kentucky Heritage Commission
Frankfort, Kentucky

Photo 5a

OCT 25 1979

Rustic shelter house.

DEC 1 1 1979



6161 11 1979
DEC 11 1979

Cave Hill Cemetery

Louisville, Jefferson Co., Ky.

Lee Walker October 1979

Kentucky Heritage Commission

Frankfort, Kentucky Photo 16

Mausoleum.

OCT 25 1979



OCT 25 1979

Cave Hill Cemetery

DEC 11 1979

Louisville, Jefferson Co., Ky.

Lee Walker October 1979

Kentucky Heritage Commission

Frankfort, Kentucky Photo 17

Mausoleum.



Cave Hill Cemetery

DEC 11 1979

Louisville, Jefferson Co., Ky.

Lee Walker October 1979

Kentucky Heritage Commission

Frankfort, Kentucky

OCT 25 1979

Photo 18--Superintendent's house.