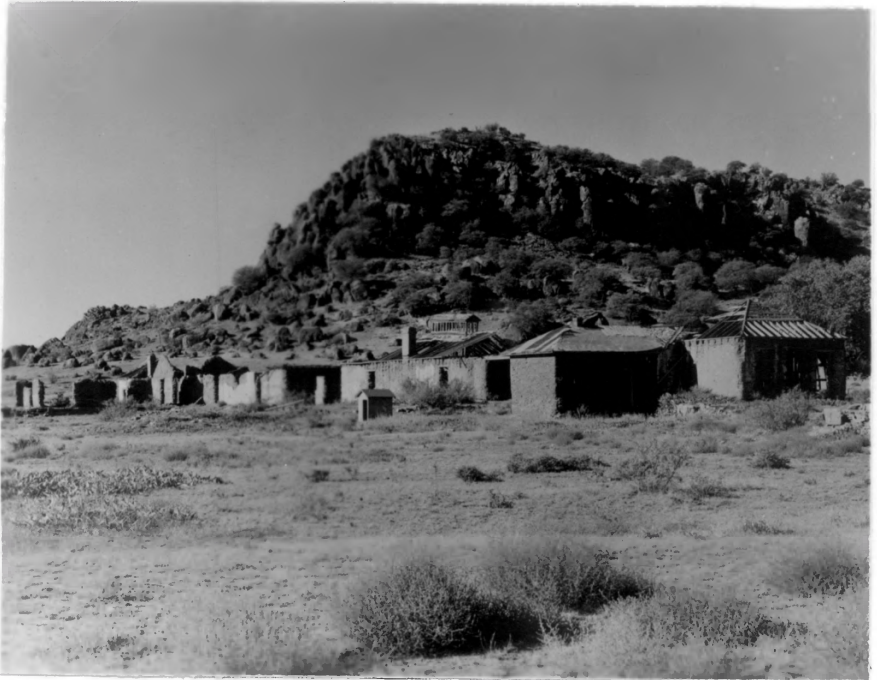
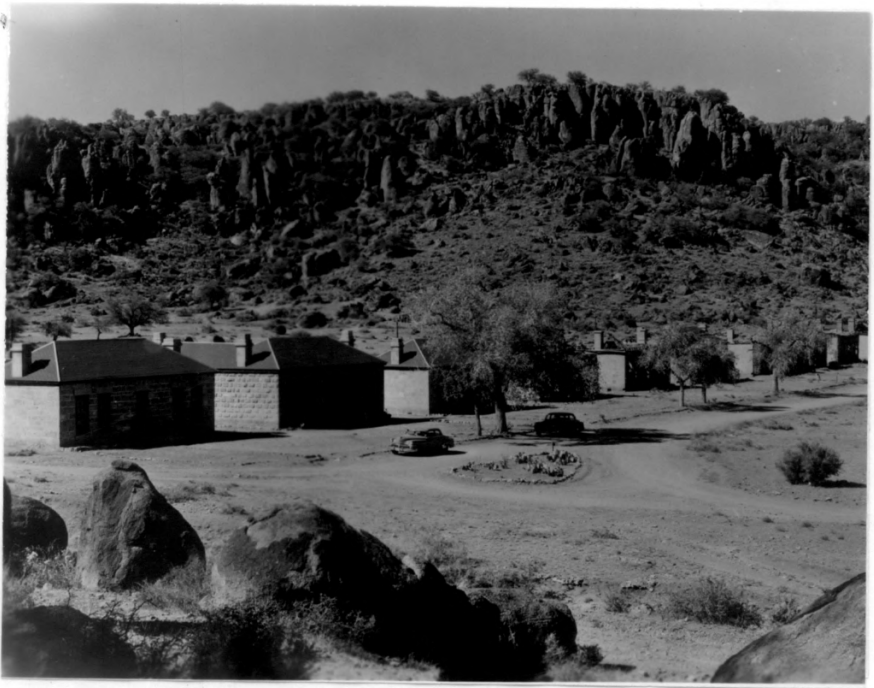




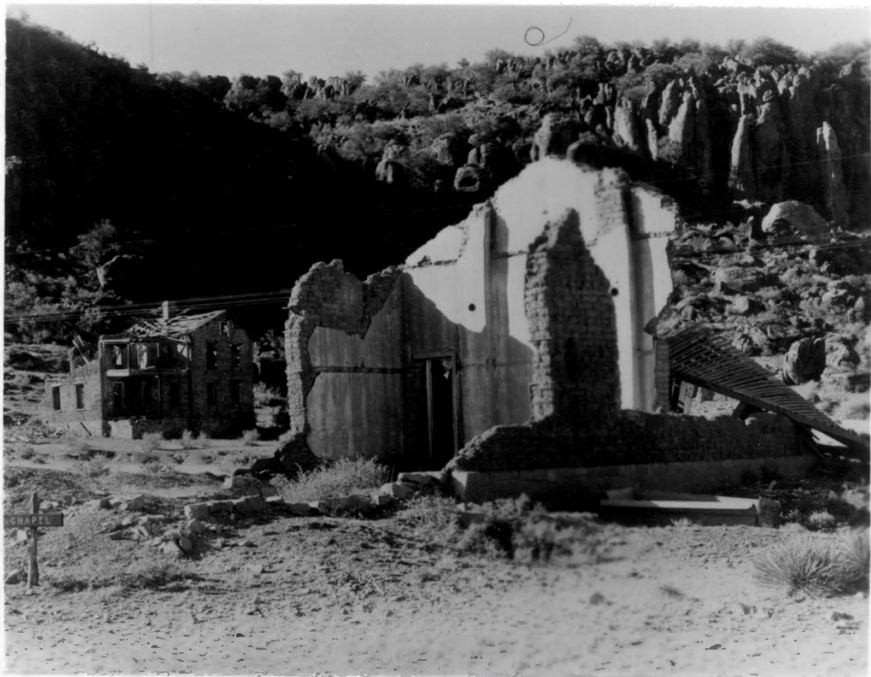
96 ——— 6 3/8 ———

67 9/10

50. The ruins of Fort Davis are the most extensive of any fort in the Southwest. This is officers' row. National Park Service photograph.



Fort Davis, Texas. Above: Officers Row, looking north. Below: Barracks and parade ground, looking southeast. Photos by George Grant, Sept., 1953. Negatives in Region Three Office, National Park Service, Santa Fe, New Mexico



**Fort Davis, Texas. Chapel, looking northwest.  
Photo by George Grant, Sept., 1953. Negative  
in Region Three Office, National Park Service,  
Santa Fe, New Mexico.**