



United States Department of the Interior

NATIONAL PARK SERVICE
1849 C Street, N.W.
Washington, D.C. 20240

The attached property, the Belknap Bridge in Lane County, OREGON, reference number 79002097 and part of the Oregon Covered Bridges Thematic Resource, was listed in the National Register of Historic Places by the Keeper of the National Register on 11/29/1979, as evidenced by the FEDERAL REGISTER/WEEKLY LIST Vol. 45 number 54, notice of Tuesday, March 18, 1980, page 17475. The attached nomination form is a copy of the original documentation provided to the Keeper at the time of listing.

For the Keeper: Ruth Zink / B. R. J. W.
Keeper of the National Register of Historic Places 2-2-2000
Date

THEMATIC GROUP NOMINATION
OREGON COVERED BRIDGES

Bridge Name and Number Belknap Bridge, Index No. 23

County Lane

Stream or River McKenzie River

Location At Rainbow, off Highway 126, ca. 3 miles W of McKenzie Bridge

NW $\frac{1}{4}$ NE $\frac{1}{4}$ Sec. 20, T.16S., R.5E., W.M.

Zone 10 E561800 N4890640 McKenzie Bridge Quadrangle

Acreeage and Boundary Description Full width of road right-of-way
for the distance between abutments and ten feet additional
at either end, containing in all approximately 8400 square feet.

Present Owner Lane County Board of Commissioners

Lane County Courthouse

Eugene, OR 97401

Date of Construction 1966

Description of Bridge

Length of span	120 feet
Truss type	Howe truss
Cladding	Board and batten, vertical side walls
Roofing	Metal-clad gable roof
Decking	Wood (?)

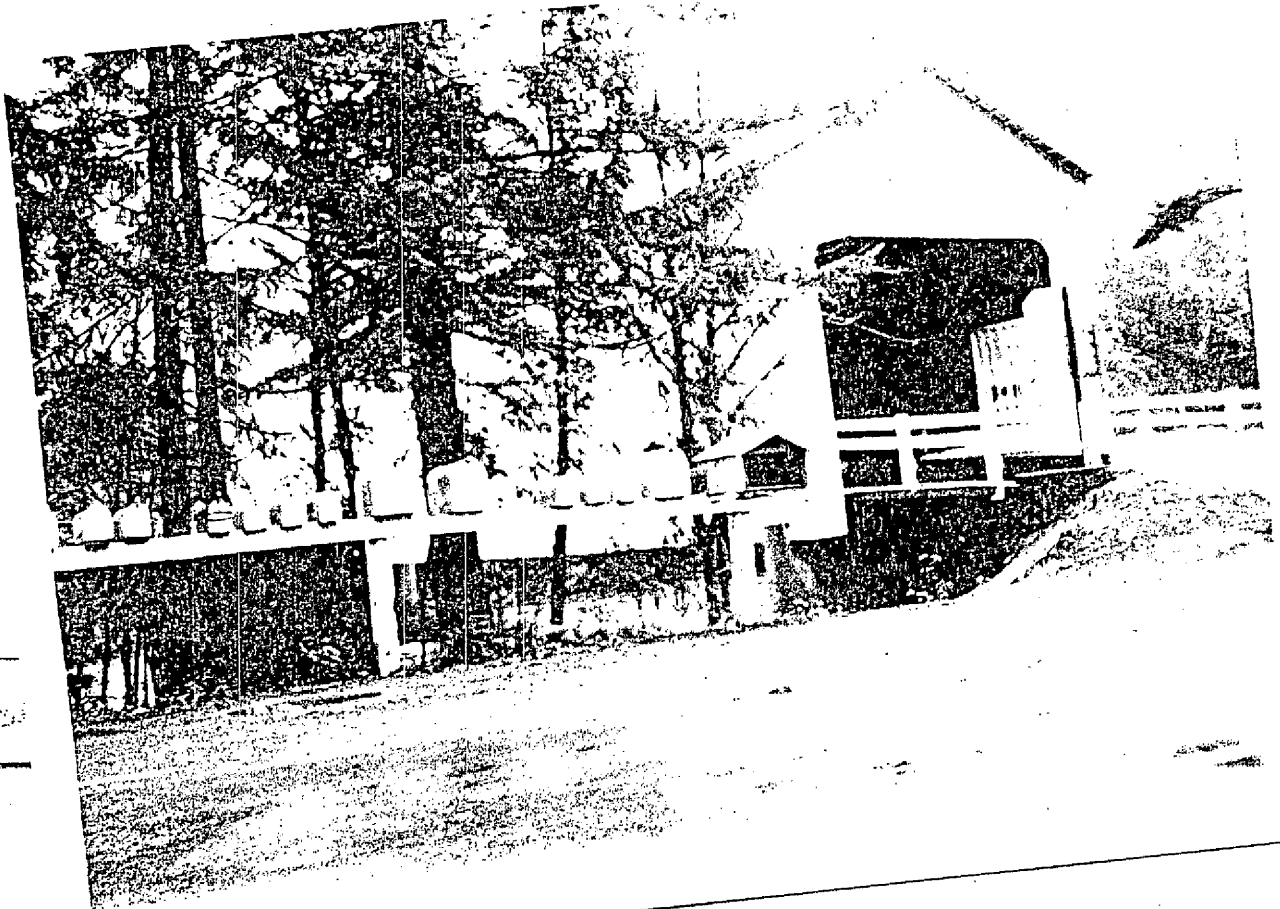
Other salient features Rectangular-arched portals. Formally-placed louvered openings in south side wall have truncated triangular arch heads. Concrete piers. Width of road: 21'. Rated load limit: 39 tons. Windows added for ventilation in 1975. Although this is the newest structure in the Thematic Group, it succeeds three earlier covered spans at this location. The first two were erected in 1890 and 1911. The third, erected by Lane County in 1938, was destroyed by the Flood of 1964. The existing bridge, completed in 1966, was designed by the Oregon Bridge Corporation of Springfield (Merlin Stam).

Legal description is included in the appropriate County Road Department right-of-way files and County Deed Records.

Information based on following sources: Statewide Inventory Form prepared by Stephen Dow Beckham, 1976. Typescript on Oregon Covered Bridges by Nick and Bill Cockrell, 1977. Lane County Department of Public Works Covered Bridge Data Sheet, October 1976.

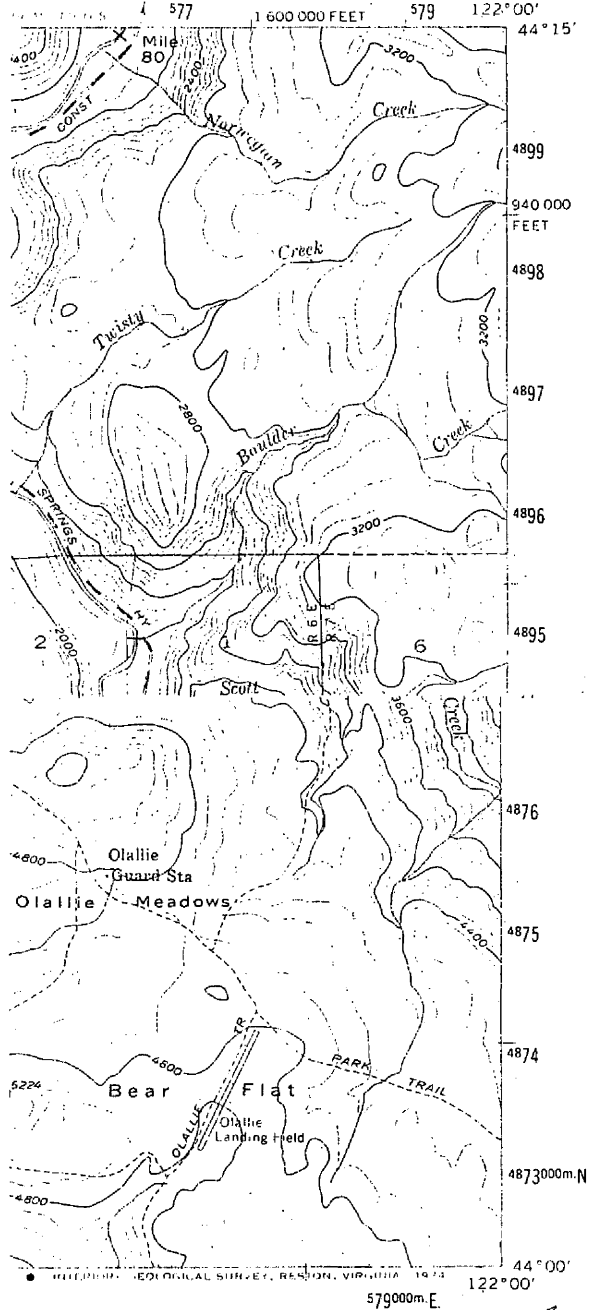
Bridge Index No. 23
Belknap Covered Bridge
Vicinity of Blue River
Lane County, Oregon
South East Elevation

Nick and Bill Cockrell Photo, 1976
751 Piedmont NW
Salem, OR 97304



MCKENZIE BRIDGE QUADRANGLE
 OREGON-LANE CO.
 15 MINUTE SERIES (TOPOGRAPHIC)

1672 IV
 THREE FINGERED JACK



ROAD CLASSIFICATION

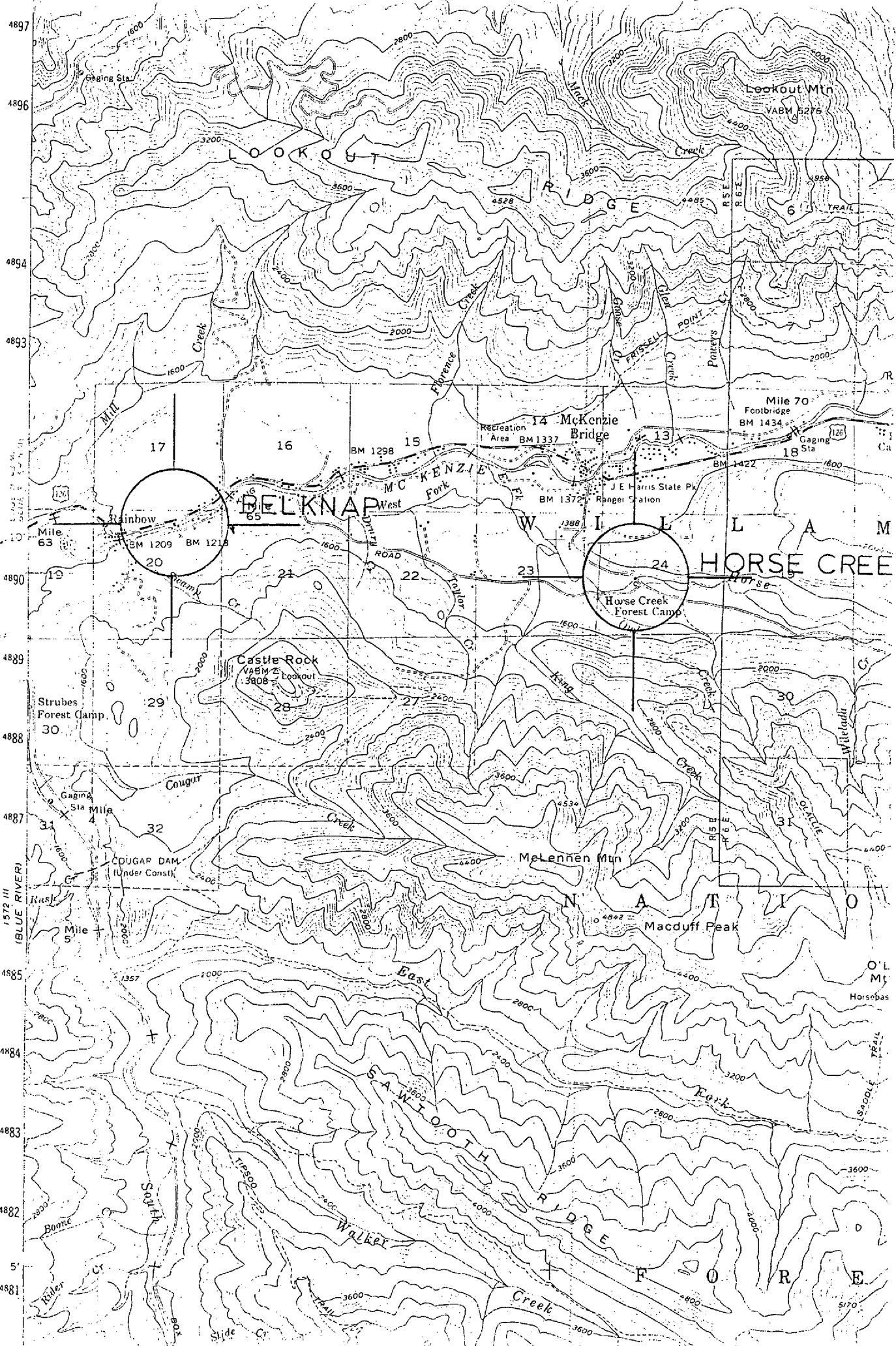
Medium-duty Light-duty
 Unimproved dirt

(PACKSADDLE
 MOUNTAIN 125,000)
 1671 IV NW

U S Route
BELKNAP COVERED BRIDGE # 23
 10/561800/4890640
 MCKENZIE BRIDGE, OREG.
 N4400—W12200:15

1955

AMS 1572 II—SERIES V792
HORSE CREEK COVERED BRIDGE # 24
 10/567670/4890060



4897
4896
4894
4893
4890
4889
4888
4887
4885
4884
4883
4882
4881

1572 III
(BLUE RIVER)

5'

4881

20
Rainbow
BM 1209
BM 1218

24
Horse Creek
Forest Camp

28
Castle Rock
Lookout
BM 3808

30
Strubes
Forest Camp

31
Cougar
Dam
(Under Const)

McLennen Mtn

Macduff Peak

SAWTOOTH
RIDGE

Walker
RIDGE

Walker
Creek

Slide Cr

Slide Cr

Slide Cr

Slide Cr

Slide Cr

Slide Cr

Slide Cr

Slide Cr

Slide Cr

Slide Cr

Slide Cr

Slide Cr

Slide Cr

Slide Cr

Slide Cr

Slide Cr

Slide Cr

Slide Cr

Slide Cr

Slide Cr

Slide Cr

Slide Cr

Slide Cr

Slide Cr

Slide Cr

Slide Cr

Slide Cr

Slide Cr

Slide Cr

Slide Cr

Slide Cr

Slide Cr

Slide Cr

Slide Cr

Slide Cr

Slide Cr

Slide Cr

Slide Cr

Slide Cr

Slide Cr

Slide Cr

Slide Cr

Slide Cr

Slide Cr

Slide Cr

Slide Cr

Slide Cr

Slide Cr

Slide Cr

Slide Cr

Slide Cr

Slide Cr

Slide Cr

Slide Cr

Slide Cr

Slide Cr

Slide Cr

Slide Cr

Slide Cr

Slide Cr

Slide Cr

Slide Cr

Slide Cr

Slide Cr

Slide Cr

Slide Cr

Slide Cr

Slide Cr

Slide Cr

Slide Cr

Slide Cr

Slide Cr

Slide Cr

Slide Cr

Slide Cr

Slide Cr

Slide Cr

Slide Cr

Slide Cr

Slide Cr

Slide Cr

Slide Cr

Slide Cr

Slide Cr

Slide Cr

Slide Cr

Slide Cr

Slide Cr

Slide Cr

Slide Cr

Slide Cr

Slide Cr

Slide Cr

Slide Cr

Slide Cr

Slide Cr

Slide Cr

Slide Cr

Slide Cr

Slide Cr

Slide Cr

Slide Cr

Slide Cr

Slide Cr

Slide Cr

Slide Cr

Slide Cr

Slide Cr

Slide Cr

Slide Cr

Slide Cr

Slide Cr

Slide Cr

Slide Cr

Slide Cr

Slide Cr

Slide Cr

Slide Cr

Slide Cr

Slide Cr

Slide Cr

Slide Cr

Slide Cr

Slide Cr

Slide Cr

Slide Cr

Slide Cr

Slide Cr

Slide Cr

Slide Cr

Slide Cr

Slide Cr

Slide Cr

Slide Cr

Slide Cr

Slide Cr

Slide Cr

Slide Cr

Slide Cr

Slide Cr

Slide Cr

Slide Cr

Slide Cr

Slide Cr

Slide Cr

Slide Cr

Slide Cr

Slide Cr

Slide Cr

Slide Cr

Slide Cr

Slide Cr

Slide Cr

Slide Cr

Slide Cr

Slide Cr

Slide Cr

Slide Cr

Slide Cr

Slide Cr

Slide Cr

Slide Cr

Slide Cr

Slide Cr

Slide Cr

Slide Cr

Slide Cr

Slide Cr

Slide Cr

Slide Cr

Slide Cr

Slide Cr

Slide Cr

Slide Cr

Slide Cr

Slide Cr

Slide Cr

Slide Cr

Slide Cr

Slide Cr

Slide Cr

Slide Cr

Slide Cr

Slide Cr

Slide Cr

Slide Cr

Slide Cr

Slide Cr

Slide Cr

Slide Cr

Slide Cr

Slide Cr

Slide Cr

Slide Cr

Slide Cr

Slide Cr

Slide Cr

Slide Cr

Slide Cr

Slide Cr

Slide Cr

^K
Belnap Bridge
Stream: McKenzie River
Built: 1966
World Guide No.: 37-20-11

#23
T16S R5E S20
Truss: Howe
Length: 120 feet

The Belnap Bridge occupies a site in which a covered bridge has been in use since 1890. In that year, the original covered span was erected by Mr. T. Thomson. In 1911, this bridge was replaced by Lane County with another covered structure. The third covered bridge at this site was erected by the County in 1939 and was destroyed by the Christmas Flood of 1964. The current covered bridge was designed by the Oregon Bridge Corporation, Springfield, and was built by a contract let by the County. It was opened for traffic on October 31, 1966, and is the newest covered highway bridge in the State.

Several years ago, louvered gothic style windows were added to the south side of the bridge to give interior illumination.

TO GET THERE:

Travel east of Springfield on US 126 to the town of McKenzie Bridge. One mile west of the town turn south on McKenzie River Drive to Belnap Bridge.

(Caption for Belnap Bridge)

The third covered bridge to occupy this site was photographed as it was being dismantled in 1939, after 28 years of service. Most covered bridges reach a critical point after 20 years of use and require extensive repairs to maintain the structure in a safe condition.

PHOTO: OREGON HISTORICAL SOCIETY