



**PHOTOGRAPHIC DATA**

Photographer: Ann Toplovich

Date: 2/8/79

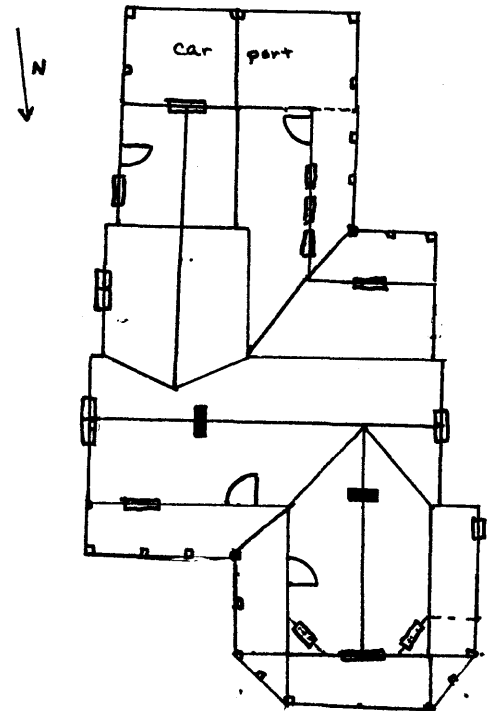
Negatives on file: Tennessee Historical  
Commission

Photographer facing: E. elevation facing W

Photograph number 3 of 55.

**CONTINUATION**

**SITE PLAN - Include North Arrow**



**United States Department of the Interior  
Heritage Conservation and Recreation Service**

**National Register of Historic Places  
Inventory—Nomination Form**

For HCRS use only

received

date entered

Continuation sheet Historic Resources of Meigs County, Tennessee Item number Identification Page 2

MEIGS COUNTY MULTIPLE RESOURCE NOMINATION - Ewing House (#3)

Verbal Boundary Description and Justification:

3. The boundaries begin at a point on the Euchee Road at the northern corner of the property line, thence southwest along Euchee Road 450 feet to the western corner of the property, thence southeast 225 feet, thence northeast 450 feet to the northern property line, thence northwest 200 feet to the beginning. This boundary takes the approximate form of a rectangle which encompasses the building. Due to a lack of property lines or visual boundaries on the southeast side, imaginary boundary lines were established to include the house and approximately 2.5 acres.

Historic Resources of Meigs County,  
Tennessee  
(Partial Inventory: Historic and  
Architectural Resources)

EWING HOUSE (#3)

