



Burks' Distillery (Maker's Mark
Distillery)
ca. 3 mi. E. of Loretto off Ky. 49 & 52
Loretto, Kentucky

Photo No. 1

By: Ralph J. Christian, AASLH

Negative at: HSS, HCRS

Date: July 1978

View: From southwest, showing south
facade of Cistern Room, south end and
west side of Office, and south facade
of Still House.

JAN 16 1980



Burks' Distillery (Maker's Mark
Distillery)
ca. 3 mi. E. of Loretto off Ky. 49 &
52
Loretto, Kentucky

Photo No. 2

By: Ralph J. Christian, AASLH

Negative at: HSS, HCRS

Date: July 1978

View: From southeast, showing east end
and portion of south facade of Still
House and portion of south facade of
Boiler House.

JAN 16 1980



Burk's Distillery (Maker's Mark
Distillery)
ca. 3 mi. E. of Loretto off Ky. 49 &
52
Loretto, Kentucky

Photo No. 3
By: Ralph J. Christian, AASLH
Negative at: HSS, HCRS
Date: July 1978

View: From east, showing east end of
Boiler House and Still House.

Marion Co.
KY NH2

JAN 16 1980



Burks' Distillery (Maker's Mark
Distillery)
ca. 3 mi. E. of Loretto off Ky. 49 &
52

Loretto, Kentucky

Photo No. 4

By: Ralph J. Christian, AASLH

Negative at: HSS, HCRS

Date: July 1978

JAN 16 1980

View: From northwest, showing west
facade of Barrel House, north end and
west facade of Bottling House, north
end and west facade of Still House, and
north end of Warehouse D.



Burks' Distillery (Maker's Mark
Distillery)
ca. 3 mi. E. of Loretto off Ky. 49 &
52
Loretto, Kentucky

Photo No. 5
By: Ralph J. Christian, AASLH
Negative at: HSS, HCRS
Date: July 1978

View: From west, showing west ends of
Bottling House, Still House, and
Office.

JAN 16 1980



Burks' Distillery (Maker's Mark
Distillery)
ca. 3 mi. E. of Loretto off Ky. 49 &
52
Loretto, Kentucky

Photo No. 6

By: Ralph J. Christian, AASLH

Negative at: HSS, HCRS

Date: July 1978

View: From southwest, showing west
side and south end of Warehouse A.

Marion B.
KY WHL

JAN 16 1980



Burks' Distillery (Maker's Mark
Distillery)
ca. 3 mi. E. of Loretto off Ky. 49 &
52
Loretto, Kentucky

Photo No. 7

Courtesy: Maker's Mark Distillery, Inc.
Date: ca. 1977

View: From southwest, showing west
side and south end of Office and south
facade of Still House.

Marion B. K4
NHL
JAN 16 1980

MAKER'S MARK DISTILLERY - VIEWED DOWN THE BRANCH WHICH MEANDERS THROUGH THE FARM. THESE CREEK STONE WALLS WERE CONSTRUCTED BY SLAVE LABOR IN THE EARLY 1800'S, AND IT WAS HERE IN 1805, THAT ONE OF THE FIRST WATER-POWERED GRIST MILLS IN KENTUCKY WAS ERECTED. MILLING OF GRAIN AND DISTILLING OF WHISKY HAVE BEEN CONTINUOUS, ON THIS SITE, SINCE ABOUT THAT TIME.

Maker's Mark Distillery
STAR HILL FARM
LORETTO, KENTUCKY 40037

NO SMOKING

UNFINISHED
WHISKEY
TANK NO 1
CAP. 518 GAL.

LOW WINE
TANK NO 1
CAP. 118 GAL.



149
Burks' Distillery (Maker's Mark
Distillery)
ca. 3 mi. E. of Loretto off Ky. 49 &
52
Loretto, Kentucky

Photo No. 8

Courtesy: Maker's Mark Distillery, Inc.
Date: ca. 1977

View: First floor area of Still House,
showing 1804 handhewn beams and
hardwood floors.

JAN 16 1980

Makers' Mark Distillery, Inc.
STAR HILL FARM
LORETTO, KENTUCKY 40037

INSIDE AMERICA'S SMALLEST STILL HOUSE (20 BARRELS PER DAY CAPACITY) EVERY DROP OF MAKER'S MARK IS PRODUCED. OF INTEREST TO VISITORS ARE THE HAND-HEWN BEAMS AND HARDWOOD FLOORS WHICH DATE BACK TO THE EARLY 19TH CENTURY.



Burks' Distillery (Maker's Mark
Distillery)
ca. 3 mi. E. of Loretto off Ky. 49 &
52
Loretto, Kentucky

Photo No. 9
Courtesy: Maker's Mark Distillery, Inc.
Date: ca. 1977

View: 1840's Tail Box on first floor
of Still House.

JAN 16 1980

152

Makers' Mark Distillery, Inc.
STAR HILL FARM
LORETTO, KENTUCKY 40037

ALWAYS INTERESTING TO VISITORS - PICTURED HERE IS ONE OF THE TAIL BOXES INTO WHICH FLOWS CLEAR, PURE WHISKY, JUST AS IT COMES OFF THE STILL. MADE OF SOLID COPPER AND HAND-CRAFTED DURING THE 1840'S, THIS BOX IS SEALED WITH A (B.I.R.) (BUREAU OF INTERNAL REVENUE) LOCK WHICH CAN BE OPENED ONLY BY RESIDENT GOVERNMENT GAUGERS.

Home of
Maker's
S IV
★
Mark



Burks' Distillery (Maker's Mark
Distillery)
ca. 3 mi. E. of Loretto off Ky. 49 &
52
Loretto, Kentucky

Photo No. 10

Courtesy: Maker's Mark Distillery, Inc.

Date: ca. 1977

View: From northwest, showing front
(north) facade of Burks House, north
facade and west end of Quart House,
and portions of south ends of
Cistern Room and Office.

NHL
Marion Co. KY JAN 16 1980



Distillery, Inc.
KY 40037

Burks' Distillery (Maker's Mark
Distillery)

ca. 3 mi. E. of Loretto off Ky. 49 &
52

Loretto, Kentucky

Photo No. 11

Courtesy: Maker's Mark Distillery, Inc.
Date: ca. 1977

View: From northwest, showing north
facade and west end of Quart House.

NHL

JAN 16 1980

Maion B. Ky

AMERICA'S OLDEST STANDING RETAIL PACKAGE STORE. TO THIS QUART HOUSE, PRIOR TO PROHIBITION (1920), DISTILLERS WOULD TAX PAY BARRELS OF WHISKY FOR RETAIL SALE ON THE PREMISES. IT IS TO THIS BUILDING THAT NEIGHBORS BROUGHT THEIR JUGS, QUART JARS, OR OTHER CONTAINERS FOR THE PURPOSE OF MAKING SUCH PURCHASES. THIS PRACTICE IS NO LONGER PERMITTED.



Burks' Distillery (Maker's Mark
Distillery)
ca. 3 mi. E. of Loretto off Ky. 49 &

52

Loretto, Kentucky

Photo No. 12

Courtesy: Maker's Mark Distillery, Inc.

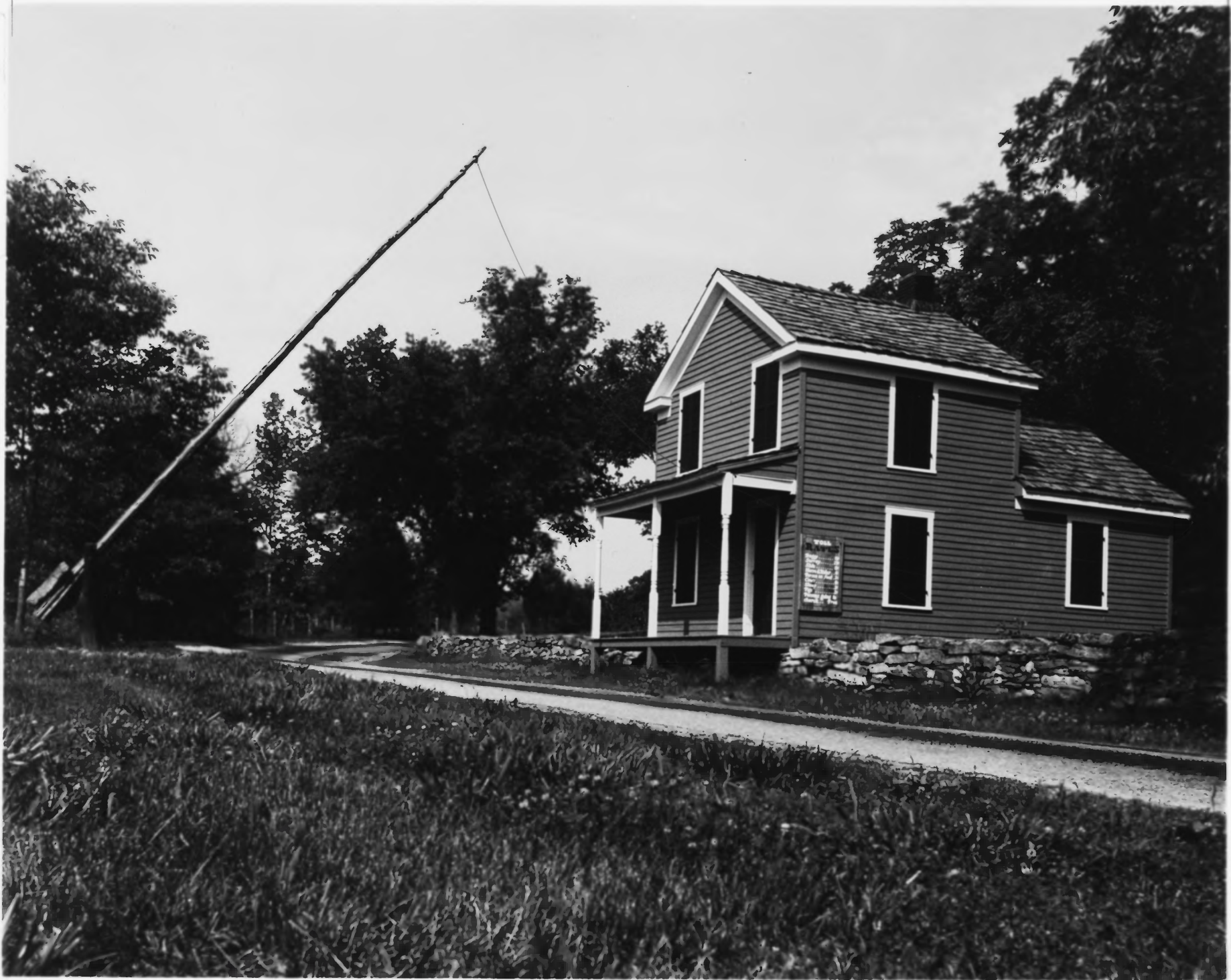
Date: ca. 1977

View: From southeast, showing south
end and east facade of Distiller's
House.

JAN 16 1980

Marion Co. KY NHL

VISITOR RECEPTION HOUSE. THIS TWO STORY, 19TH CENTURY CLAPBOARD HOUSE, ORIGINALLY SERVED AS THE MASTER DISTILLER'S HOME. IT HAS RECENTLY BEEN CONVERTED INTO A RECEPTION HOUSE FOR VISITORS TO THE DISTILLERY AND CONTAINS MANY ARTIFACTS OF OLD TIME DISTILLING.



Burks' Distillery (Maker's Mark
Distillery)
ca. 3 mi. E. of Loretto off Ky. 49 &
52
Loretto, Kentucky

Photo No. 13
Courtesy: Maker's Mark Distillery, Inc.
Date: ca. 1977

View: From southwest, showing west
side and front (south) facade of
Toll House.

JAN | 6 1980



Burks' Distillery (Maker's Mark
Distillery)
ca. 3 mi. E. of Loretto off Ky. 49 &
52
Loretto, Kentucky

Photo No. 14
Courtesy: Maker's Mark Distillery, Inc.
Date: ca. 1977

View: From northwest, showing front
(north) facade and west side of
Burks House.

JAN 16 1980

Maker's
STAR HILL FARM
LORETTO, KENT

BEAUTIFULLY RESTORED TO ALL ITS VICTORIAN SPLENDOR, THE GEORGE R. BURKS HOME, ON A KNOLL OVERLOOKING THE DISTILLERY, NOW SERVES AS A MEETING PLACE FOR COMPANY BUSINESS FUNCTIONS AT STAR HILL FARM.