



270

United States Department of the Interior
National Park Service

National Register of Historic Places
Registration Form

This form is for use in nominating or requesting determinations for individual properties and districts. See instructions in *How to Complete the National Register of Historic Places Registration Form* (National Register Bulletin 16A). Complete each item by marking "x" in the appropriate box or by entering the information requested. If any item does not apply to the property being documented, enter "N/A" for "not applicable." For functions, architectural classification, materials, and areas of significance, enter only categories and subcategories from the instructions. Place additional entries and narrative items on continuation sheets (NPS Form 10-900a). Use a typewriter, word processor, or computer, to complete all items.

1. Name of Property

historic name Nanticoke Lodge No. 172, A.F. & A.M.

other names Nanticoke Lodge; [Federalsburg] Masonic Temple; CAR-377

2. Location

street & number 112-116 North Main Street not for publication

city or town Federalsburg vicinity _____

state Maryland code MD county Caroline code 011 zip code 21632

3. State/Federal Agency Certification

As the designated authority under the National Historic Preservation Act of 1966, as amended, I hereby certify that this nomination request for determination of eligibility meets the documentation standards for registering properties in the National Register of Historic Places and meets the procedural and professional requirements set forth in 36 CFR Part 60. In my opinion, the property meets does not meet the National Register criteria. I recommend that this property be considered significant nationally statewide x locally. (See continuation sheet for additional comments).

[Signature] 4-17-14
Signature of certifying official/Title Date

State or Federal agency and bureau

In my opinion, the property meets does not meet the National Register criteria. (See continuation sheet for additional comments).

Signature of certifying official/Title Date

State or Federal agency and bureau

4. National Park Service Certification

- I hereby certify that this property is:
- entered in the National Register.
 See continuation sheet.
 - determined eligible for the National Register.
 See continuation sheet.
 - Determined not eligible for the National Register.
 - removed from the National Register.
 - other (explain): _____

[Signature] 6.2.14
Signature of the Keeper Date of Action

Nanticoke Lodge No. 172, A.F. & A.M., CAR-377
Name of Property

Caroline County, Maryland
County and State

5. Classification

Ownership of Property
(Check as many boxes as apply)

- private
- public-local
- public-State
- public-Federal

Category of Property
(Check only one box)

- building(s)
- district
- site
- structure
- object

Number of Resources within Property
(Do not include previously listed resources in the count)

Contributing	Noncontributing	
1		buildings
		sites
		structures
		objects
1	0	Total

Name of related multiple property listing
(Enter "N/A" if property is not part of a multiple property listing)

N/A

number of contributing resources previously listed in the National Register

0

6. Function or Use

Historic Functions
(Enter categories from instructions)

SOCIAL/meeting hall
COMMERCE TRADE/specialty store
RECREATION AND CULTURE/auditorium

Current Functions
(Enter categories from instructions)

COMMERCE TRADE/specialty store
RELIGION/religious facility

7. Description

Architectural Classification
(Enter categories from instructions)

LATE 19th and EARLY 20th CENTURY REVIVALS
Colonial Revival

Materials
(Enter categories from instructions)

foundation CONCRETE
walls TERRA COTTA/STUCCO
roof ASPHALT
other

Narrative Description

(Describe the historic and current condition of the property on one or more continuation sheets)

8. Statement of Significance

Applicable National Register Criteria

(Mark "x" in one or more boxes for the criteria qualifying the property for National Register listing)

- A Property is associated with events that have made a significant contribution to the broad pattern of our history.
- B Property associated with the lives of persons significant in our past.
- x C Property embodies the distinctive characteristics of a type, period, or method of construction or represents the work of a master, or possesses high artistic values, or represents a significant and distinguishable entity whose components lack individual distinction.
- D Property has yielded, or is likely to yield, information important in prehistory or history.

Criteria Considerations

(Mark "x" in all the boxes that apply)

Property is:

- A owned by a religious institution or used for religious purposes.
- B removed from its original location.
- C a birthplace or grave.
- D a cemetery.
- E a reconstructed building, object, or structure.
- F a commemorative property.
- G less than 50 years of age or achieved significance within the past 50 years.

Narrative Statement of Significance

(Explain the significance of the property on one or more continuation sheets)

Area of Significance

(Enter categories from instructions)

Architecture

Period of Significance

1919-1963

Significant Dates

1919-20

Significant Person

(Complete if Criterion B is marked above)

Cultural Affiliation

Architect/Builder

Unknown

9. Major Bibliographical References

Bibliography

(Cite the books, articles, and other sources used in preparing this form on one or more continuation sheets)

Previous documentation on files (NPS):

- preliminary determination of individual listing (36 CFR 67) has been requested
- previously listed in the National Register
- previously determined eligible by the National Register
- designated a National Historic Landmark
- recorded by Historic American Buildings Survey # _____
- recorded by Historic American Engineering Record # _____

Primary location of additional data:

- State Historic Preservation Office
- Other State agency
- Federal agency
- Local government
- University
- Other

Name of repository:

Nanticoke Lodge No. 172, A.F. & A.M., CAR-377
Name of Property

Caroline County, Maryland
County and State

10. Geographical Data

Acreage of Property Less than one acre Federalsburg MD quad

UTM References

(Place additional UTM references on a continuation sheet)

1	1	8	4	3	2	6	9	0	4	2	8	3	1	9	9
	Zone			Easting			Northing								
2															

3															
	Zone			Easting			Northing								
4															

See continuation sheet

Verbal Boundary Description

(Describe the boundaries of the property on a continuation sheet)

Boundary Justification

(Explain why the boundaries were selected on a continuation sheet)

11. Form Prepared By

name/title Paul Baker Touart, Architectural Historian
Organization Private Consultant date 6.14.2013
street & number Cedar Hill Box 5 telephone 410-651-1094
city or town Westover state Maryland zip code 21871

Additional Documentation

Submit the following items with the completed form:

Continuation Sheets

Maps

A **USGS map** (7.5 or 15 minute series) indicating the property's location.

A **Sketch map** for historic districts and properties having large acreage or numerous resources.

Photographs

Representative **black and white photographs** of the property.

Additional Items

(Check with the SHPO or FPO for any additional items)

Property Owner

(Complete this item at the request of SHPO or FPO)

name John W. Phillips, Jr.
street & number 3799 Bradley Road telephone 410-754-8141
city or town Federalsburg state Maryland zip code 21632

Paperwork Reduction Statement: This information is being collected for applications to the National Register of Historic Places to nominate properties for listing or determine eligibility for listing, to list properties, and to amend existing listings. Response to this request is required to obtain a benefit in accordance with the National Historic Preservation Act, as amended (16 U.S.C. 470 *et. seq.*).

Estimated Burden Statement: Public reporting burden for this form is estimated to average 18.1 hours per response including the time for reviewing instructions, gathering and maintaining data, and completing and reviewing the form. Direct comments regarding this burden estimate or any aspect of this form to the Chief, Administrative Services Division, National Park Service, P.O. Box 37127, Washington, DC 20013-7127; and the Office of Management and Budget, Paperwork Reductions Project (1024-0018), Washington, DC 20503.

United States Department of the Interior
National Park Service

National Register of Historic Places Continuation Sheet

CAR-377
Nanticoke Lodge No. 172, A.F. & A.M.

Name of Property

Caroline County, Maryland

County and State

Section 7 Page 1

Description Summary:

The Nanticoke Lodge No. 172, A.F. & A.M. was built in 1919-20 at 112-116 North Main Street in the central business district of Federalsburg, Caroline County, Maryland. The building faces east with the longitudinal axis oriented north/south. The two-and-a-half story 80'4" by 68'4" commercial block is supported on a poured concrete foundation, and the exterior walls are laid in ribbed, hollow-core terra cotta blocks covered with a textured, pebble-dash type stucco. The building corners, window sills, and arched window heads are accented in red brick. Each elevation is pierced on the second story by round arched window openings holding twelve-over-one sash. The steeply pitched gable-on-hip roof features an open eave with exposed and decorated rafter tails. The roof is covered with asphalt shingles currently, but it was originally sheathed with asbestos shingles. Three gable roofed dormers, also with extended eaves, mark the east roof slope, and there are pairs of gable roofed dormers on the north and south roof slopes. A single gable roofed dormer is located on the west slope. Originally, the edge of the low pitched gable roof was trimmed with a cross-stick balustrade. The first floor front has an intact early twentieth century Colonial Revival entrance flanked by glass commercial storefronts. The center entrance opens into a hall and central stair providing access to the former second floor lodge room and auditorium.

The interior spaces have survived largely undisturbed with pressed metal ceilings featuring neoclassical motifs. The plastered side walls are defined by evenly spaced pilasters. Located centrally is a multi-landing staircase rising between the first floor commercial spaces. The staircase is laid out in a series of steps and landings associated with Masonic numerology in a 3, 5, 7 & 9 order which is associated with Masonic spiritual and allegorical themes. There are two initial steps and the first landing equaling three steps, followed by four steps and a second landing signifying the number five, then six steps and a third landing equaling seven, and finally eight steps and the second floor level referencing nine. All four numbers relate to multiple meanings in Freemasonry and religious symbolism that is a large part of Masonic literature and catechism. For instance, the number three refers to the "three most excellent Masters" and the three craft degrees,¹ and in Masonic religious teachings, the number three aligns with the Holy Trinity, the three virtues of hope, love/charity, and unity, and the third letter in the Hebrew alphabet, G, as a Masonic symbol for God. The other letters 5, 7 & 9 are filled similarly with Masonic symbolism and religious meaning.

¹ The first three craft degrees of Freemasonry include the Entered Apprentice, Fellow of Craft, and Master Mason. In the United States this is called the Blue Lodge Masonry, as cited in www.elecbk.com/numerology.htm.

United States Department of the Interior
National Park Service

National Register of Historic Places Continuation Sheet

CAR-377
Nanticoke Lodge No. 172, A.F. & A.M.

Name of Property

Caroline County, Maryland

County and State

Section 7 Page 2

On the second floor a large stage survives in the auditorium, which also retains its original pressed metal ceiling. The former lodge room has been remodeled with a dropped ceiling, but the original pressed metal ceiling survives above. The west room, known as the "ante-room," is entered through the second floor hall door. Between the ante-room and the old lodge meeting room is a narrow hallway that provides access to a small closet type space known as the "preparation room." The interior woodwork, including early twentieth-century five-panel doors and plain surrounds, and ogee molded baseboard trim, survives intact. A center, enclosed attic stair rises above the first floor staircase, and exposed in the unfinished attic stair space is a terra cotta block interior partition. The attic is a large unfinished space and has heavily framed W-shaped trusses which are bolted to sandwiched wood girders that span the full breadth of the building.

General Description:

The Nanticoke Lodge No. 172, A.F. & A.M. stands in the center of the town of Federalsburg, located in southern Caroline County on the Northwest Branch of the Nanticoke River. The Masonic Lodge building stands at 112-116 North Main Street, and the structure faces east with the roof oriented on a north/south axis. Built in 1919-20, the two-and-a-half story, eight-bay by five-bay lodge building is supported on a poured concrete foundation. Built of ribbed, hollow-core terra cotta block covered with pebble-dash type textured stucco, the Colonial Revival influenced structure is capped by a broad gable-on-hip roof with extended eaves and exposed rafter tails. Gable roofed dormers, also finished with extended eaves and exposed rafter ends, mark the hip roof, which was accented originally with a cross-stick balustrade.

The east (main) elevation is slightly asymmetrical eight-bay façade with an off-center entrance accented by a Colonial Revival pediment supported by Tuscan order, half-column pilasters. Fixed in the upper corners of the recessed entrance under the frieze are matched scroll shaped blocks. The frieze is inscribed, "Masonic Temple," in capital letters across its length. The recessed door is a mid-twentieth-century glass and steel replacement; an original leaded glass transom with an etched glass Masonic symbol in the center panel survives above. To each side of the pediment entrance are commercial storefronts with plate glass windows flanking recessed entrances. The outer corners of the west elevation are accented in brick in the manner of inset quoins. Fixed in the northeast front corner is a marble cornerstone dated 1919, inscribed with the Masonic compass and square framing the letter G, and initials, A.F. & A.M. The second story is marked by a series of twelve-over-one sash windows with round headers and sills accented in brick. The double rowlock arches have brick keystones and impost blocks. There are four center bays defined by sash windows, two blind bays and two outer bays pierced by twelve-over-one sash. The blind bays are marked on the upper wall surface with small diamond

United States Department of the Interior
National Park Service

National Register of Historic Places Continuation Sheet

CAR-377
Nanticoke Lodge No. 172, A.F. & A.M.
Name of Property

Caroline County, Maryland
County and State

Section 7 Page 3

shaped brick medallions, which are also found between each of the center sash windows. The east roof slope is defined by three gable roofed dormers finished with extended eaves and open soffits. The dormer window openings have been boarded up, but they were originally fitted with six-over-one sash windows. The hip roof rises to a low pitched gable roof that was accented formerly by a cross-stick balustrade.

The south elevation is a five-bay façade with a series of boarded over six-pane window units marking the first floor commercial space. The six-pane window openings have brick sills. Five twelve-over-one sash windows light the second floor rooms, and each window unit has a round brick arch and brick sill. There are two gable roofed dormers on the hip roof.

The north elevation is a five-bay façade with boarded over window units marking the first story, and twelve-over-one sash windows on the second. A metal fire-escape is fixed to the second window unit from the northeast corner. The center bay of the second floor is blind. Two gable roofed dormers mark the north roof slope.

The rear (west) elevation is marked by an assortment of rear entrances and boarded over window units on the first story and five round-arched twelve-over-one sash windows on the second story. Between the second and third bays from the southeast corner is a small rectangular window unit that lights a bathroom. The west roof slope is defined by a single gable roofed dormer.

The first floor commercial spaces have remained essentially unaltered with intact pressed metal ceilings with neoclassical motifs and moldings highlighting the cornice. The ceilings are defined by fields of recessed square panels with molded geometric patterns. Plain wall pilasters define the side walls. Located in the northwest corner of the former hardware store is an old furnace room that is set below grade with a partial poured concrete floor and foundation and exposed sections of the ribbed terra cotta blocks. Fixed between the two first floor commercial spaces is a central staircase that rises to the second floor in four separate series of steps and landings conforming to Masonic numerology of 3, 5, 7 & 9. The first two steps and initial landing comprise the first series equaling three, which is followed by four steps and the second landing making 5. A third series of 6 steps and a landing equal seven, and the final series of 8 steps and the second floor level refer to the number 9. All four numbers have varied and complex references in Masonic symbolism which is heavily integrated within a strict religious catechism.² The ceiling of the center stair hall retains its pressed metal decorative surface.

² For a more complete discussion of the meaning behind the 3, 5, 7 & 9 numerology see www.elecck.com/numerology.htm.

United States Department of the Interior
National Park Service

National Register of Historic Places Continuation Sheet

CAR-377
Nanticoke Lodge No. 172, A.F. & A.M.

Name of Property

Caroline County, Maryland

County and State

Section 7 Page 4

The former lodge room spaces are located on the south side of the second floor hall, and the ante-room is entered through a five-panel door framed by a plain surround. The ante-room is a rectangular shaped space formerly used as social gathering room for inductees into the lodge membership. The ante-room has access to a small bathroom and kitchen, both of which are entered through five-panel door units. The perimeter of the room is trimmed with an ogee molded baseboard.

Fixed off-center on the inside wall of the ante-room is a five-panel door opening that leads into a narrow cross hall that provides access to the lodge room as well as a small closet space known as the "preparation room," which was used as a waiting space for individual inductees. The hall has rows of hooks for hanging coats. The interior of the lodge room has been altered with the introduction of a dropped acoustical tile ceiling. Tiered platforms are located on the east, west, and south sides, which correspond to the ceremonial seating for the Grand Master, Senior Warden, and Junior Warden, respectively. The north wall, known as the "place of darkness," is a blind inner wall only defined by plain pilasters.

On the north side of the center stair passage is the auditorium, which has survived unchanged since its construction in 1919-20. The pressed metal ceiling is intact, as is a stage fixed in the east end of the room. The stage is elevated and has neoclassical pilasters on each side flanking a broad arched opening. A plain keystone is fixed in the center of the arch. In the southeast corner adjacent to the stage is a series of dressing rooms. Also in this corner is a five-panel door that opens into the enclosed access to the attic. A rudimentary open riser stair is flanked by a stud partition on the north and a ribbed terra cotta hollow block partition to the south. The attic is a large unfinished space. Massive W-shaped trusses span the length of the building, support the roof, and are bolted to sandwiched wood girders integrated into the ceiling joist framing system. Some burn evidence along the east side series of common rafters indicates the building has been subjected to a fire that burned through the roof but was extinguished before structural damage occurred.

United States Department of the Interior
National Park Service

National Register of Historic Places Continuation Sheet

CAR-377
Nanticoke Lodge No. 172, A.F. & A.M.

Name of Property

Caroline County, Maryland

County and State

Section 8 Page 1

Summary Statement of Significance:

The Nanticoke Lodge No. 172, A.F. & A.M. building, erected in 1919-20, is locally significant under Criterion C as an architecturally distinguished and well preserved example of a mixed use commercial block in the central business district of Federalsburg in Caroline County, Maryland. The handsome Colonial Revival building reflects the transformation of the construction industry that took place around the turn of the 20th century, as transportation improvements allowed mass produced building materials to be shipped long distances. It also exemplifies the practical combination, seen elsewhere in the region during the period, of income-producing commercial space on the first floor and lodge rooms above. Elements of the building's decorative detailing and plan – including a staircase designed along Masonic principles of numerology – provide evidence of its original function.

The period of significance extends from the building's original construction, 1919, to a date fifty years in the past. It remained in continuous use as a Masonic lodge until 2004.

The Nanticoke Lodge is one of two purpose-built Masonic lodges surviving in Caroline County, the other being the Law Building in Denton (see CAR-201). Conceived on a generous scale with two large storefronts on the ground floor and a lodge room and auditorium on the second, the Colonial Revival influenced building was erected with ribbed, hollow-core terra cotta block walls covered with a combination of pebble dash textured stucco and brick accents. Stylistic features linked to the Colonial Revival include the neoclassical entrance surround with a pediment and scroll shaped console brackets. Although the front door has been replaced, a leaded glass transom survives above, and it is distinguished by an etched glass Masonic emblem. Also reflective of the Colonial Revival are the brick built corner quoins and the round headed twelve-over-one sash window openings that define all second floor elevations. A cross-stick balustrade originally accented the crest of the hip roof. The first and second floor interiors are fitted with original pressed metal ceilings featuring neoclassical motifs and geometric patterns. The side walls on both floors are defined by plain pilasters. Other than a few later partitions on the first floor, and a dropped ceiling in the former lodge room spaces, the interiors have survived essentially intact. In the former auditorium/movie theater the stage features neoclassical pilasters on each side of a flat arch.

The Nanticoke Lodge No. 172, A.F. & A.M. building is also significant as an excellent example of the transformation in the building industry that took place during the nineteenth and early twentieth centuries when the manufacture of building products was fully modernized and industrialized. New materials, mass-produced in factories nationwide, were shipped economically and expeditiously by a mature set of railroads and steamship lines that served the

United States Department of the Interior
National Park Service

National Register of Historic Places Continuation Sheet

CAR-377
Nanticoke Lodge No. 172, A.F. & A.M.

Name of Property

Caroline County, Maryland

County and State

Section 8 Page 2

Eastern Shore of Maryland. Ribbed terra cotta blocks were not manufactured locally, nor were the elaborately decorated sheets of pressed metal ceiling panels and cornices. For the most part materials were shipped to Federalsburg via a branch line of the Philadelphia, Wilmington & Baltimore Railroad, which by the late nineteenth century was a subsidiary of the Pennsylvania Railroad.

The construction of the Masonic Temple building with terra cotta block walls and a stuccoed exterior with brick accents points to three major trends in construction enabled by the mass-production of materials accessed by a modern transportation system; building was more inexpensively and expeditiously accomplished, and at the same time, built with better preventive measures against the threat of fire.³ Federalsburg had experienced a destructive fire in 1898, and during the decades that followed principal commercial blocks were erected in brick, concrete block, and in this case, terra cotta block covered with stucco. The roof was originally covered with asbestos shingles.

The Nanticoke Lodge Masonic Temple building also represents a tradition for Masonic lodges erected on the Eastern Shore of Maryland during the late nineteenth and early twentieth centuries whereby the ground floor is devoted to income producing commercial space and the lodge rooms are located on an upper floor. In nearby Denton at the Law building, and in Salisbury, large three-story commercial blocks housing Masonic lodge rooms on an upper floor were erected during the first decade of the twentieth century. Following in this tradition, the Federalsburg lodge building was the location of a hardware store and early Ford dealership under the name of Covey and Williams.

While no longer used by the Nanticoke Lodge, the building also retains architectural significance with its distinct references, both obvious and subtle, to its former life as a Masonic Temple. The cornerstone with the date 1919 and the initials A.F. & A.M. are combined with an etched Masonic symbol in the front door transom light and the incised name "MASONIC TEMPLE" across the entrance entablature frieze. More subtle features pointing to its former use as a Masonic temple is the intentionally built staircase in a series of 3, 5, 7 & 9 steps to reach the second floor lodge rooms. The numbers 3, 5, 7 & 9 have complex meanings in Masonic literature and associated religious catechism. The lodge rooms, while no longer furnished with Masonic objects, retain their original plan, and the lodge meeting room survives with three tiered platforms used by Grand Master, Senior Warden and Junior Warden.

Resource History and Historic Context:

³ Pamela H. Simpson, *Cheap, Quick & Easy, Imitative Architectural Materials, 1870-1930*, Knoxville, Tennessee: The University of Tennessee Press, 1999, p. 23.

United States Department of the Interior
National Park Service

National Register of Historic Places Continuation Sheet

CAR-377
Nanticoke Lodge No. 172, A.F. & A.M.
Name of Property

Caroline County, Maryland
County and State

Section 8 Page 3

The town of Federalsburg developed along the banks of the North West branch of the Nanticoke River during the fourth quarter of the eighteenth century. The village was known in its earliest years as North West Fork Bridge, located at a principal crossing of the North West Fork between Dorchester and Caroline counties. By the 1820s, North West Fork Bridge was called Federalsburgh, and portions of the town were split between the two counties. Until a Maryland Act of Assembly changed the county boundaries in 1880, three quarters of the town was in Dorchester and the balance was in Caroline. When the town was consolidated into a single political jurisdiction, Caroline County compensated Dorchester for the loss of land.

By the midpoint of the nineteenth century, Federalsburg was still a relatively small village with a few hundred residents, but the construction of the Dorchester & Delaware Branch of the Delaware Railroad—between Seaford, Delaware and Cambridge, in Dorchester County—altered the future of every community on its route after its completion in 1868. Looking back thirty years in 1904, a writer commented on the changes to the town in terms of the ease of building:

Thirty years ago, to build oneself a home in Federalsburg was a momentous undertaking, and one fraught with many difficulties, although this would hardly be guessed from the appearance of the finished article. These houses, while they were moderately roomy and comfortable, were, in most cases, built in the plainest manner, and from rather rough material. Moreover, these homes were few, and far between, as they were built almost entirely by those families whose ancestors for many generations back had lived their lives and died in this vicinity. They had been content to stay at home, while outsiders had been equally content to remain away. Why should they come? There was nothing to attract an ambitious person—no possible way for him to earn more than a bare living, and perhaps not that.

Times have changed since then, however, and it would take a smart person to recognize in Federalsburg of today, the little town of thirty years ago.

The advent of a few enterprising persons seemed to awake the dormant energy and ambition of the people of the town, and things began to boom. The factories and other industries have brought people from a distance, and these people must have houses to live in. For several years carpenters have been doing their utmost, but have been unable to supply the demand for houses. The demand for building lots has caused a rise in prices, although they are still remarkably cheap compared with prices of lots in other towns of less importance.

There are now about twenty-five houses in all stages of building, and many more to be completed within a year...Not only are scores of new houses being built, but the old

United States Department of the Interior
National Park Service

National Register of Historic Places Continuation Sheet

CAR-377
Nanticoke Lodge No. 172, A.F. & A.M.
Name of Property

Caroline County, Maryland
County and State

Section 8 Page 4

houses are receiving attention. New rooms and porches are being added to some, some are being repainted, while others are being changed into up-to-date dwellings.

Since the addition of water works to the town, the homes may be made much more comfortable and convenient. Hot and cold water may be had with only a small additional cost. It is also possible to have our homes lighted by gas now, as the machines for making it are made in the town, and it will, no doubt, be generally used.⁴

As this article describes or implies, a new generation of housing was under construction in Federalsburg following its connection to the railroad. The growing population was the catalyst for new social and civic organizations typical of a maturing community. In November 1875, the Nanticoke Lodge, No. 172 A.F. & A. M. was authorized and installed by the Grand Lodge of Maryland. Its charter members included Dr. W. D. Noble, William H. Alberger, Silas Sparklin, David O. P. Elliott, W. J. Mowbray and others.⁵ An initial lodge room burned in a town fire in 1898, and the Federalsburg Masons subsequently met in the I.O.O.F. hall until a replacement lodge room was established over the Federalsburg Stove store owned by Reverend T. S. Holt.⁶ The lodge membership continued to grow along with the region's population during the early twentieth century, and alternate meetings were sometimes held in the nearby town of Preston.

By 1910-20 the Nanticoke Lodge had grown to 115 members, and at the end of the decade the organization sponsored the construction of a new temple incorporating two first floor commercial shop fronts and a public auditorium on the property known as the Davis Lot, land that had descended to Annie V. Davis following the death of her father James Wright. The lot, bordering the west side of North Main Street, was situated on the edge of the central business district at its northern limits for the period.⁷ The lot was improved by a mansard roofed hardware store.⁸ In May 1919, the lodge minutes state that the "Davis Block" could be purchased for \$3,000 and the membership voted to proceed with the acquisition.⁹ The building committee was charged with removing the frame hardware store building, which was relocated to the back of the Davis lot.

⁴ Federalsburg Souvenir Booklet [1904] "*A Few Words About Our Rapid Growth in Building*," n.p. Xeorx copy in the Federalsburg file, Caroline County Public Library, Denton, Maryland.

⁵ Federalsburg Souvenir Booklet [1904], "*Sketch of the Masonic Order*," n.p.

⁶ *Ibid.*

⁷ Caroline County Land Record, LBT 83/9, 9 August 1919, Caroline County Courthouse, Denton.

⁸ Sanborn-Perris Insurance Map, Federalsburg, June 1915, Library of Congress. Also interview with lodge member Harvey Williamson, 6.6.2013.

⁹ Nanticoke Lodge, No. 172 Minutes, 5.16.1919, Resolution passed 6.6.1919 to take possession of the lot, and the responsibility of the purchase was entrusted to lodge members Thomas H. Chambers, George H. Jefferson, and Harvey D. Williams.

United States Department of the Interior
National Park Service

National Register of Historic Places Continuation Sheet

CAR-377
Nanticoke Lodge No. 172, A.F. & A.M.
Name of Property

Caroline County, Maryland
County and State

Section 8 Page 5

The construction of the new lodge building was entrusted to the building committee, and a "Temple Fund" was created as a dedicated account to deposit money solicited nationwide. Letters went out from Federalsburg across the nation encouraging donations to this effort. In one letter, in October 1919, the lodge secretary wrote Charles S. Lewis of Los Angeles, California,

Work on the Temple is going along very nicely. The walls are already up and they are putting on the roof. This last will make quite a lot of work for the carpenters, but we hope if they can have good weather they will have this part finished within a few weeks.¹⁰

In another letter the following month, the chairman of the finance committee wrote Percy L. Deane of Nicholson, Mississippi. He related,

We have undertaken a big enterprise and let me tell you that it surely requires funds: but we are going to see it through. I don't believe any Lodge has more loyal members than old Nanticoke and they are sticking up for this proposition like good fellows. Splendid progress has been made in the erection of the Temple and it now begins to look like a real building. When it is completed it will be a credit to all who helped make the building of it possible and I am sure you will be proud of it as will all the members of the Nanticoke Lodge. Just when the dedication [will] take place I do not know. It will not be any time soon.¹¹

A short article in the November 1, 1919 issue of the *Denton Journal* stated "Prominent Masons from many sections were in Federalsburg Wednesday to attend the laying of the cornerstone of the new Masonic Temple, in course of erection here, which will cost between \$25,000 and \$30,000. Grand Master Charles C. Homer and Deputy Grand Master Warren S. Seipp were present."¹² On the issue of what to put in the cornerstone, Warren S. Seipp wrote Harvey D. Williams, a member of the building committee, the week before the dedication instructing them that

In the Cornerstone are generally put relics generally pertaining to the building, editions of the paper, coins of the times, and whatever else you may care to put in to designate that it is a Masonic Cornerstone laying by the General Lodge of Maryland.¹³

¹⁰ Letter to Charles S. Lewis from the lodge secretary, file copy, 10.25.1919.

¹¹ Letter from finance chairman Harry W. Davis to Percy L. Deane, Nicholson, Mississippi, 11.25.1919.

¹² *Denton Journal*, 11.1.1919, newspaper item provided by John Phillips.

¹³ Letter from Deputy Grand Master of the Lodge, Warren S. Seipp to Harvey D. Williams, 10.27.1919.

United States Department of the Interior
National Park Service

National Register of Historic Places Continuation Sheet

CAR-377
Nanticoke Lodge No. 172, A.F. & A.M.
Name of Property

Caroline County, Maryland
County and State

Section 8 Page 6

In an article written the following year in 1920, and recalled twenty-five years later in the *Denton Journal* article, it was related:

Federalsburg Masonic lodge which recently built a splendid temple as noted in the *Journal*, was chartered November 16, 1875, with the following members; Silas Sparklin, William J. Mowbray, Dr. W. O. Noble, J. H. Moore, W. H. Alberger, D.O.P. Elliott and Charles B. Conway. There are now 115 members. The new building was begun July, 1919, and finished in May 1920. It has 80 feet front and is 68 feet deep. It consists of two stories, the lower floor being occupied by J. O. Williams as a display room for his automobile store and by A. H. Covey as a hardware store. The second floor contains the lodge room and a large auditorium in which a motion picture parlor is opened by Hiram Longaker and C. H. Cooper.¹⁴

Few construction records for the Nanticoke Lodge's Temple have survived. The sophistication of the design suggests the involvement of a professional architect, but the designer has not been identified. The few invoices and letters that do exist indicate a building process that involved the shipment of disparate materials from a wide range of sources, some with apparent difficulty. E. S. Adkins of Salisbury, one of the principal suppliers of building materials on the lower Shore, provided many materials that were undoubtedly shipped to Federalsburg by rail. A western Pennsylvania firm, the DuQuesne Slag Products Company, which had an eastern sales office in Philadelphia, sent ¼" slag to the town, only to be contacted by the lodge secretary that the ¼" rock was incorrectly loaded and sent. The company wrote the membership in return correspondence stating that had they known it was to be used for stucco, they would have suggested 5/8" slag instead. The lodge correspondence does not record if the difference in materials was sorted out.

The underlying structure of the lodge is a poured concrete foundation with walls of terra cotta hollow-core blocks covered with the textured, pebbled stucco. The source for the hollow-core terra cotta blocks is not known, but firms from New York City to Philadelphia and elsewhere advertised the fire-proof nature of their terra cotta blocks. Henry Mauer & Son of New York City advertised their products in *Sweet's Indexed Catalogue of Building Construction*, specifically what they called its "Phoenix" Hollow Tiles for outside walls; "blocks are sized at 4, 6, 8, and 12 inches in thickness and are manufactured especially for the purpose of hard burned terra cotta, either smooth or ribbed to receive stucco."¹⁵ The company also stated that the "Phoenix" Hollow Tile was a good substitute to brick since it was "more economical, quickly

¹⁴ *Denton Journal*, "Twenty-five Years Ago This Week," 12.23.1945.

¹⁵ *Sweet's Indexed Catalogue of Building Construction*, New York and Chicago, Architectural Record Company, 1906, pp. 84-85.

United States Department of the Interior
National Park Service

National Register of Historic Places Continuation Sheet

CAR-377
Nanticoke Lodge No. 172, A.F. & A.M.
Name of Property

Caroline County, Maryland
County and State

Section 8 Page 7

erected, of considerably less weight, and is adapted to any kind of building, especially country houses, barns, automobile garages, and all kinds of buildings.”

The interiors of the new commercial block were relatively plain with plastered walls, but all the ceilings feature pressed metal ceiling panels and cornices, a fairly new type of ceiling finish that surfaced during the late nineteenth century. Pressed metal competed aggressively with plaster. As advertised profusely, metal ceilings offered a fire resistant finish that was also more sanitary, permanent, and cheaper to install, and came in a wide range of decorative choices.¹⁶ The ceilings installed in the Nanticoke Lodge’s Masonic Temple building are largely neo-classically inspired with egg-and-dart moldings bordering anthemion cornice motifs. The flat sections of the ceilings are covered with fields of recessed square panels with impressed geometric patterns.

With their newly built Temple, the Nanticoke lodge membership ordered new Mission style oak furniture; many chairs have high paneled backs signifying ceremonial seating for the lodge officials. Long benches were also installed along the walls for general seating. The lodge minutes record that the old furniture was offered to the I.O.O.F. membership, but they declined. The lodge room formerly featured a blue carpet, which made reference to the importance of the color blue in Masonic symbolism, especially in the North American lodges which were often called the “Blue Lodges of Masonry.”¹⁷

The membership of Nanticoke Lodge No. 172 maintained regular meetings and activities at their Temple for over eighty years after its completion. Increasing costs of maintenance and the difficulty in accessing the second floor lodge room by an aging membership led to its closure in 2004.¹⁸

¹⁶ Simpson, pp. 63-64.

¹⁷ For a thorough discussion of the meaning and symbolism of the color blue in Masonic teachings and ritual see www.masonicdictionary.com

¹⁸ Caroline County Land Record, FDM 547/263, 24 June 2004, Caroline County Courthouse, Denton.

United States Department of the Interior
National Park Service

National Register of Historic Places Continuation Sheet

CAR-377
Nanticoke Lodge No. 172, A.F. & A.M.
Name of Property

Section 9 Page 1

Caroline County, Maryland
County and State

Major Bibliographical References:

Caroline County Land Records, Caroline County Courthouse, Denton.

Denton Journal, various issues, 1 November 1919 under "Federalsburg" column, and "Twenty-five Years Ago This Week," 23 December 1945.

Federalsburg Souvenir Booklet [1904], n. p., Caroline County Public Library.

Nanticoke Lodge No. 172, minutes and correspondence, 1918-1920, I.O.O.F. Building, Federalsburg, Maryland.

Simpson, Pamela H. *Cheap, Quick & Easy: Imitative Architectural Materials, 1870-1930*, Knoxville: University of Tennessee Press, 1999.

Sweet's Indexed Catalogue of Building Construction, New York and Chicago: Architectural Record Co., 1906.

United States Department of the Interior
National Park Service

National Register of Historic Places Continuation Sheet

CAR-377
Nanticoke Lodge No. 172, A.F. & A.M.

Name of Property

Caroline County, Maryland

County and State

Section 10 Page 1

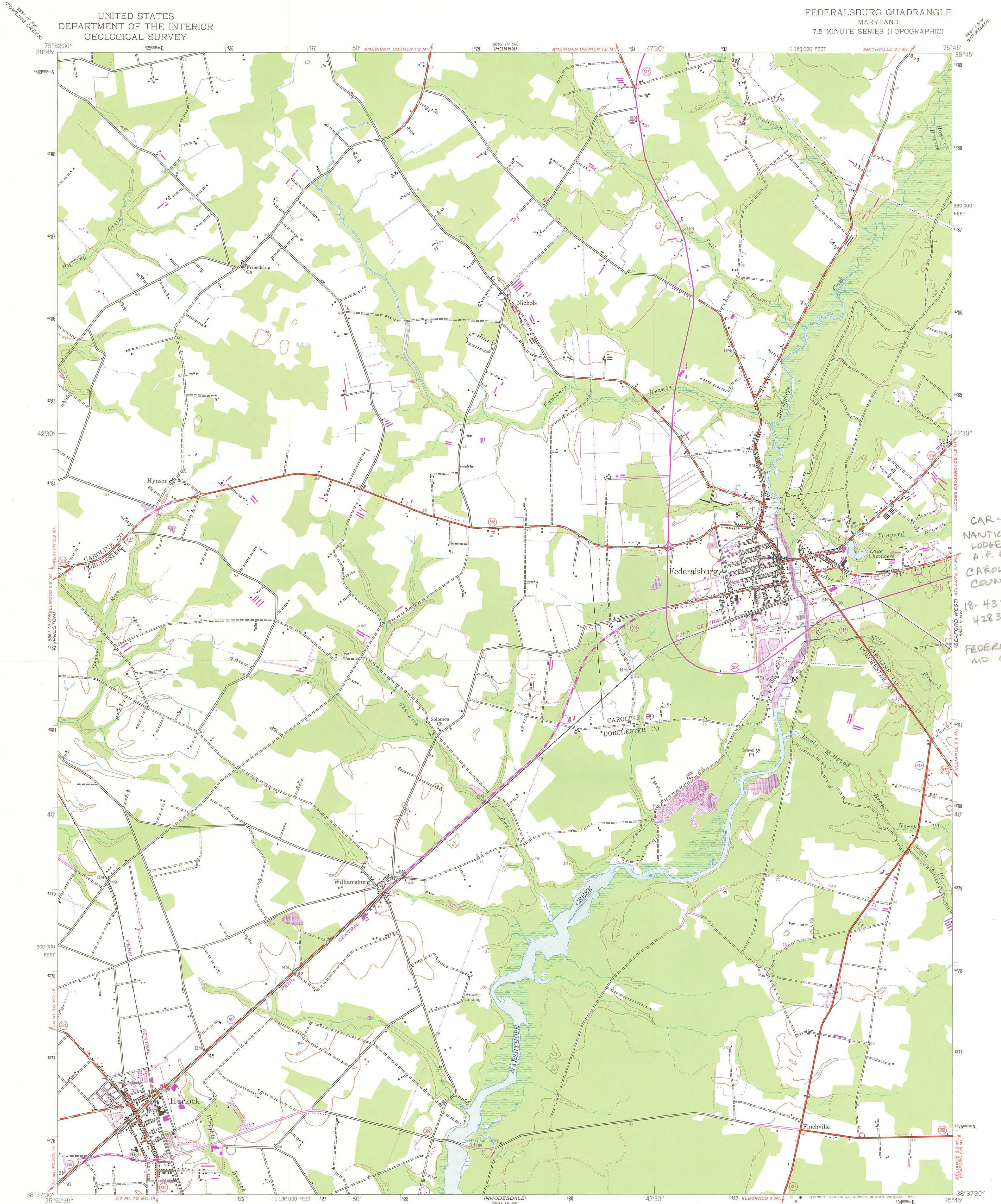
Geographical Data

Verbal Boundary Description:

The nominated property is described among the Land Records of Caroline County, Maryland in Liber 01054, folio 00300.

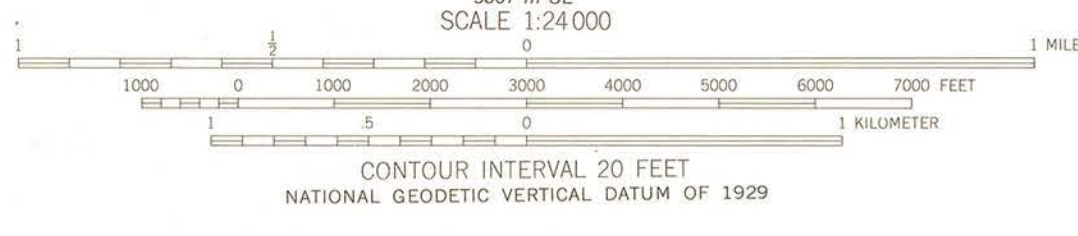
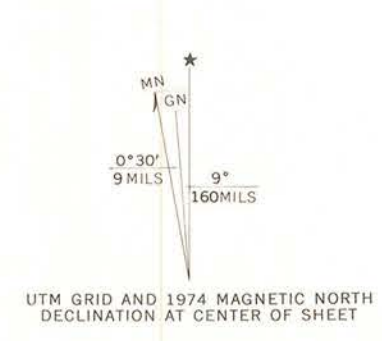
Boundary Justification:

The nominated property, approximately 0.15 acre, comprises the single town lot historically associated with the resource.



CAR-377
NANTICOKE
LODGE NO. 172
A.F. & A.M.
CAROLINE
COUNTY, MD
18-432690-
4283199
FEDERALSBURG
MD QUAD

Mapped by the Army Map Service
Published for civil use by the Geological Survey
Control by USC&GS
Topography from aerial photographs by photogrammetric methods
and by planetable surveys 1944. Aerial photographs taken 1942
Polyconic projection. 1927 North American datum
10,000-foot grid based on Maryland coordinate system
1000-meter Universal Transverse Mercator grid ticks,
zone 18, shown in blue
Revisions shown in purple compiled by the Geological Survey from
aerial photographs taken 1974. This information not field checked



CONTOUR INTERVAL 20 FEET
NATIONAL GEODETIC VERTICAL DATUM OF 1929



ROAD CLASSIFICATION	
Heavy-duty	Light-duty
Medium-duty	Unimproved dirt
State Route	

FEDERALSBURG, MD.

N3837.5-W7545.7.5

1944
PHOTOREVISED 1974
AMS 5861 III NE-SERIES V833

THIS MAP COMPLIES WITH NATIONAL MAP ACCURACY STANDARDS
FOR SALE BY U.S. GEOLOGICAL SURVEY, RESTON, VIRGINIA 22092
A FOLDER DESCRIBING TOPOGRAPHIC MAPS AND SYMBOLS IS AVAILABLE ON REQUEST



Woodill's

Tammie's

1912

CAR-377

NO. 172, A.F. & A.M.

NANTUOKE LODGE & MASONIC TEMPLE
FEDERALSBURG, CAROLINE CO, MD
NORTHEAST ELEVATION

5. 2013, PAUL B. TOUANI, P17VTV.

1 OF 10

NEG AT MD SHPD



Meredith's

Meredith's Hardware
Sales & Service
410-754-2618

172

Jamaica's

No. 172, A. F. & A. M.

CAR-377

NANTUCKET

LODGE

MASONIC

TEMPLE

Co., MD.

REVERENDS BUNGE, CAROLINE

SOUTHEAST ELEVATION

5. 2013. PAUL B. TOU ART, PITUITV.

20410

AT MD SHPO



No. 172, A.F. & A.M.

CAR-377
NANTICOKE

LODGE A MASONIC

TEMPLE
Co., MD.

FEDERALSBURG, CAROLINE

SOUTHWEST ELEVATION

5.2013, PAUL B THORNTON, PITUITARY

3 04 10

AT MD SHPO

MASONIC TEMPLE

114



15th Street
Lodge School
114
Mason & William
Lodge
7:30 - 8:30am
8:30 - 9:30am
9:30 - 10:30am

CAR - 377

No. 172, A.F. & A.M.

NANTICOKE LODGE, MASONIC

FEDERALSBURG, CAROLINE CO.
MD.

ENTRANCE - EAST ELEVATION

5.2013, Paul B. Towant

4 of 10

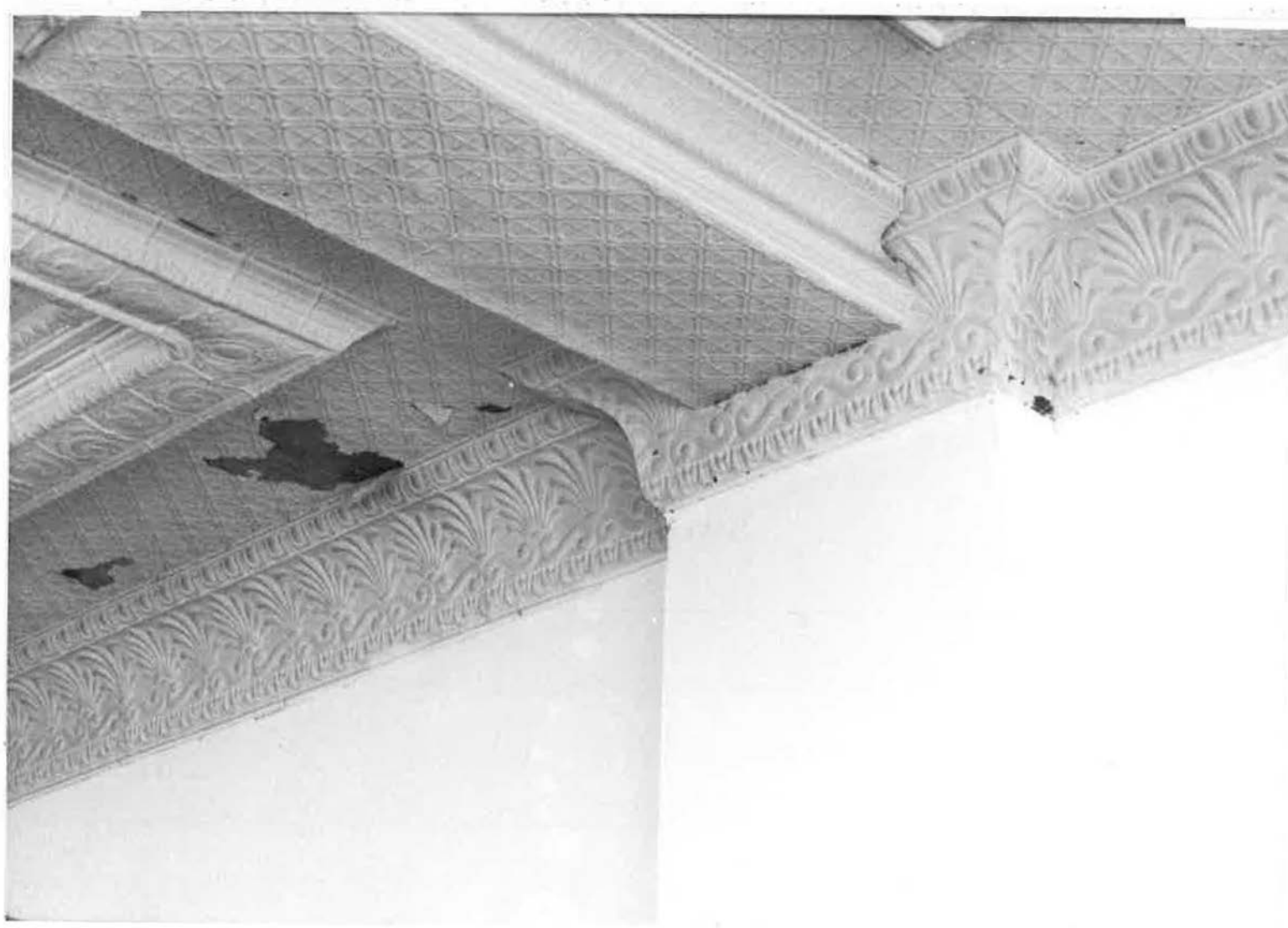
NEG AT MD SHPO



1919

CAR-377
NANTICOKE LODGE 1 MATRONS TEMPLE
FEDERALSBURG, CAROLINE CO., MD.
CORNERSTONE - NE CORNER
5, 2013, PAUL B. TOUANT, PITVT.

5 0 4 10
SHPO



CAR-377

No. 172, A. F. & A. M.

NANTICOKE LODGE, MASONIC TEMPLE
FEDERHUBURG, CAROLINE Co., MD.

FIRST FLOOR CORNICE AND CEILING

5.2013, PAUL B. THOMAS, PITTSB.

6 of 10

NEG AT MD SHPO



CAR-377

No. 172, A.F. & A.M.

NANTICOKE LODGE, MASONIC TEMPLE

FEDERALSBURG, CALVERT CO., MD.

FIRST FLOOR CEILING CORNICE

5.2013, Pam B Toward, PHOTO.

7 of 10

NEG AT MD SHPO



CAR-377

No. 172, A.F. &
A.M.

NANTUCKET LODGE, MASONIC
TEMPLE

FEDERSBURG, CAROLINE
CO., MD.

SECOND FLOOR
AND CEILING
CIRNICE

8 OF 10

NEG AT MD SHPD



No. 172, A. F. & A. M.

CAR-377

NANTICOKE LODGE, MASONS TEMPLE
FEDERALSBURG, CAROLINE Co, MD.

FORMER MASONS LODGE MEETING ROOM

5. 2013, PAUL B. TOMASKI, PITOTY.

9 OF 10

NEG AT MD SHPO



No. 172, A.F. & M.

CAR-377

WANTICOKE

LODGE

MASONIC

TEMPLE

FEDERALSBURG,

CAROLINE CO., MD

Ante-room

DOOR INTO

CROSS HALL

5.2013

PAUL

B.

TOUANT,

PITOTU.

10

OK

10

AT

MD

SHPO

National Register of Historic Places
Memo to File

Correspondence

The Correspondence consists of communications from (and possibly to) the nominating authority, notes from the staff of the National Register of Historic Places, and/or other material the National Register of Historic Places received associated with the property.

Correspondence may also include information from other sources, drafts of the nomination, letters of support or objection, memorandums, and ephemera which document the efforts to recognize the property.

UNITED STATES DEPARTMENT OF THE INTERIOR
NATIONAL PARK SERVICE

NATIONAL REGISTER OF HISTORIC PLACES
EVALUATION/RETURN SHEET

REQUESTED ACTION: NOMINATION

PROPERTY NAME: Nanticoke Lodge No. 172, A.F. and A.M.

MULTIPLE NAME:

STATE & COUNTY: MARYLAND, Caroline

DATE RECEIVED: 4/18/14 DATE OF PENDING LIST: 5/09/14
DATE OF 16TH DAY: 5/27/14 DATE OF 45TH DAY: 6/04/14
DATE OF WEEKLY LIST:

REFERENCE NUMBER: 14000270

REASONS FOR REVIEW:

APPEAL: N DATA PROBLEM: N LANDSCAPE: N LESS THAN 50 YEARS: N
OTHER: N PDIL: N PERIOD: N PROGRAM UNAPPROVED: N
REQUEST: N SAMPLE: N SLR DRAFT: N NATIONAL: N

COMMENT WAIVER: N

ACCEPT RETURN REJECT 6.2.14 DATE

ABSTRACT/SUMMARY COMMENTS:

Entered in
The National Register
of
Historic Places

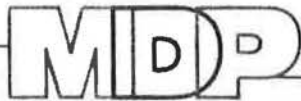
RECOM./CRITERIA _____

REVIEWER _____ DISCIPLINE _____

TELEPHONE _____ DATE _____

DOCUMENTATION see attached comments Y/N see attached SLR Y/N

If a nomination is returned to the nominating authority, the nomination is no longer under consideration by the NPS.



Maryland Department of Planning
Maryland Historical Trust

Sustainable _____ Attainable

September 24, 2013

Mr. John W. Phillips, Jr.
3799 Bradley Road
Federalsberg, Maryland 21632

RE: NANTICOKE LODGE NO. 172 A.F. AND A.M.
Caroline County, Maryland

Dear Mr. Phillips :

The Nanticoke Lodge No. 172 A.F. and A.M. will be considered by the Governor's Consulting Committee for nomination to the National Register of Historic Places on Thursday, October 24, 2013. The National Register is the official list of historic properties recognized by the Federal Government as worthy of preservation for their significance in American history, architecture, archaeology, engineering, and culture. In Maryland, the nomination process is administered by the Maryland Historical Trust. Enclosed you will find a copy of the criteria under which properties are evaluated for listing. The meeting will be held at the People's Resource Center, 100 Community Place, Crownsville, Maryland, beginning at 10:00 a.m. You are welcome to attend this meeting.

Listing in the National Register results in the following for historic properties.

1. Consideration in planning for Federal, federally or state funded, licensed and assisted projects. Federal and state legislation requires that Federal agencies allow the Advisory Council on Historic Preservation and state agencies, including the Maryland Historical Trust, opportunity to comment on all projects affecting historic properties listed in the National Register. For further information please refer to Section 36, Code of Federal Regulations, Part 800 and Annotated Code of Maryland, State Finance and Procurement Article, Section 5A-323 et seq. or call the Office of Preservation Services of the Maryland Historical Trust at (410) 514-7630.
2. Eligibility for Federal tax provisions. If a property is listed in the National Register, certain Federal tax provisions may apply. The Tax Reform Act of 1986 revises the historic preservation tax incentives authorized by Congress in the Tax Reform Act of 1976, the Revenue Act of 1978, the Tax Treatment Extension Act of 1980, the Economic Recovery Tax Act of 1981, and the Tax Reform Act of 1984, and as of January 1, 1987, provides for a 20 percent investment tax credit with a full adjustment to basis for rehabilitating historic commercial, industrial, and rental residential buildings. The former 15 percent and 20 percent Investment Tax Credits (ITCs) for rehabilitation of older commercial buildings are combined into a single 10 percent ITC for commercial or industrial buildings built before 1936.

The Tax Treatment Extension Act of 1980 provides Federal tax deductions for charitable contributions for conservation purposes of partial interests in historically important land areas or structures. Whether these provisions are advantageous to a property owner is dependent upon the particular circumstances of the property and the owner. Because tax aspects outlined above are complex, individuals should consult legal counsel or the appropriate local Internal Revenue Service office for assistance in determining the tax consequences of the above provisions. For further information on certification requirements, please refer to 36 CFR 67 or the Office of Preservation Services of the Maryland Historical Trust at (410) 514-7630.

3. Eligibility for a Maryland income tax benefit for the rehabilitation of historic property. For further information on the Heritage Preservation Tax Credit, contact the Office of Preservation Services of the Maryland Historical Trust at (410) 514-7628.

4. Consideration of historic values in the decision to issue a surface coal mining permit where coal is located. In accord with the Surface Mining Control and Reclamation Act of 1977, there must be consideration of historic values in the decision to issue a surface coal mining permit where coal is located. For further information, please refer to 30 CFR 700 et seq.

5. Eligibility to apply for federal and state grants and state low interest loans for historic preservation projects. To determine the present status of such grants and loans, contact the Office of Preservation Services of the Maryland Historical Trust at (410) 514-7632.

Owners of private properties nominated to the National Register have an opportunity to concur in or object to listing in accord with the National Historic Preservation Act and 36 CFR 60. Any owner or partial owner of private property who chooses to object to listing may submit to the State Historic Preservation Officer a notarized statement certifying that the party is the sole or partial owner of the private property and objects to the listing. Each owner or partial owner of private property has one vote regardless of what portion of the property that party owns. If a majority of private property owners object, a property will not be listed; however, the State Historic Preservation Officer shall submit the nomination to the Keeper of the National Register of Historic Places for a determination of eligibility of the property for listing in the National Register. If the property is determined to be eligible for listing, although not formally listed, Federal agencies will be required to allow the Advisory Council on Historic Preservation and state agencies, including the Maryland Historical Trust, an opportunity to comment before the agency may fund, license, or assist a project which will affect the property. If you choose to object to the listing of your property, the notarized objection must be submitted to J. Rodney Little, State Historic Preservation Officer, ATTN: Peter Kurtze, Maryland Historical Trust, 100 Community Place, Crownsville, Maryland 21032-2023 by the date of the meeting given above.

Listing in the National Register does NOT mean that the Federal Government or the State of Maryland wants to acquire the property, place restrictions on the property, or dictate the color or materials used on individual buildings. Local ordinances or laws establishing restrictive zoning, special design review committees, or review of exterior alterations are not a part of the National Register program. Listing also does NOT require the owner to preserve or maintain the property or seek approval of the Federal Government or the State of Maryland to alter the property. Unless the owner applies for and accepts special Federal or state tax, licensing, or funding benefits, the owner can do anything with his property he wishes so long as it is permitted by state or local law.

Page 3

If you wish to comment on whether the property should be nominated to the National Register, please send your comments to J. Rodney Little, State Historic Preservation Officer, ATTN: Peter E. Kurtze, before the Governor's Consulting Committee considers the nomination. Copies of the nomination, regulations and information on the National Register and Federal and State tax provisions are available from the Trust. If you have questions about this nomination, please contact Peter E. Kurtze, Administrator of Evaluation and Registration, Maryland Historical Trust at (410) 514-7649.

Sincerely,



J. Rodney Little
Director-State Historic
Preservation Officer

JRL/jmg

cc: Hon. Michael Fluharty
Mr. Paul Baker Touart



Maryland Department of Planning

Sustainable _____ Attainable

September 27, 2013

Mr. J. Rodney Little
Director, State Historic Preservation Officer
Maryland Historical Trust
100 Community Place
Crownsville, MD 21032-2023

STATE CLEARINGHOUSE RECOMMENDATION

State Application Identifier: MD20130806-0601

Applicant: Maryland Historical Trust

Project Description: HISTORIC NOMINATION - NANTICOKE LODGE NO. 172 A.F. & A.M.

Project Address: 112-116 North Main Street, Federalsburg, MD 21632

Project Location: Municipality(ies) of Caroline-Town of Federalsburg

Approving Authority: U.S. Department of the Interior DOI/NPS

CFDA Number: 15.914

Recommendation: Consistent Contingent Upon Certain Action(s)

Dear Mr. Little:

In accordance with Presidential Executive Order 12372 and Code of Maryland Regulation 34.02.01.04-.06, the State Clearinghouse has coordinated the intergovernmental review of the referenced project. This letter constitutes the State process review and recommendation based upon comments received to date. This recommendation is valid for a period of three years from the date of this letter.

Review comments were requested from the Maryland Department(s) of Natural Resources, Transportation, Caroline County; and the Maryland Department of Planning. As of this date, the Maryland Department of Transportation has not submitted comments. **This recommendation is contingent upon the applicant considering and addressing any problems or conditions that may be identified by their review. Any comments received will be forwarded.**

The Maryland Department of Natural Resources; Caroline County; and the Maryland Department of Planning found this project to be consistent with their plans, programs, and objectives.

The State Application Identifier Number must be placed on any correspondence pertaining to this project. The State Clearinghouse must be kept informed if the approving authority cannot accommodate the recommendation.

Please remember, you must comply with all applicable state and local laws and regulations. If you need assistance or have questions, contact the State Clearinghouse staff person noted above at 410-767-4490 or through e-mail at mbarnes@mdp.state.md.us. **Also please complete the attached form and return it to the State Clearinghouse as soon as the status of the project is known. Any substitutions of this form must include the State Application Identifier Number. This will ensure that our files are complete.**

Martin O'Malley, Governor
Anthony G. Brown, Lt. Governor

Richard Eberhart Hall, AICP, Secretary
Amanda Stakem Conn, Esq., Deputy Secretary

Mr. J. Rodney Little


September 27, 2013

Page 2

State Application Identifier: **MD20130806-0601**

Thank you for your cooperation with the MIRC process.

Sincerely,


Linda C. Janey, J.D., Assistant Secretary

LCJ:MB
Enclosure(s)

cc: Greg Golden - DNR

Melinda Gretsinger - MDOT

Katheleen Freeman - CRLN

David Dahlstrom - MDPLU

13-0601_CRR.CLS.doc

RICHARD F. COLBURN

37th Legislative District
Caroline County · Dorchester County
Talbot County · Wicomico County

Budget and Taxation Committee
Capital Budget Subcommittee
Public Safety, Transportation,
and Environment Subcommittee

Executive Nominations Committee
Rules Committee

Joint Committees
Administrative, Executive,
and Legislative Review
Chesapeake and Atlantic Coastal
Bays Critical Area
Chair
Eastern Shore Senate Delegation



THE SENATE OF MARYLAND
ANNAPOLIS, MARYLAND 21401

IN REPLY PLEASE REFER TO OFFICE INDICATED

☐ *Annapolis Office*

James Senate Office Building
11 Bladen Street, Room 315
Annapolis, Maryland 21401
410-841-3590 · 301-858-3590
800-492-7122 Ext. 3590
Richard.Colburn@senate.state.md.us

✉ *Mid-Shore Office*

5210 Heron Road
Cambridge, Maryland 21613
410-228-1137 · 410-819-3337
Fax 410-376-3737

October 7, 2013

Mr. J. Rodney Little
State Historic Preservation Officer
Maryland Historical Trust
100 Community Place
Crownsville, MD 21032

Dear Mr. Little,

I am writing in support of the nomination of the Nanticoke Masonic Lodge building on Main Street in downtown Federalsburg for listing on the National Register of Historic Places.

This building is a significant and important building to the history of the downtown Main Street business district of Federalsburg. It is a beautiful and unique building with many distinctive artistic characteristics. It is approaching 100 years old and has been occupied by many interesting businesses through the years, including the Town's first Ford Dealership as well as its first Movie Theatre.

The Town of Federalsburg is currently undergoing an effort to refocus attention to the downtown area, including the consideration of creating a Historic District. I believe that having this important building, in the heart of Main Street, listed on the National Register will act as an impetus for other properties and the redevelopment of Main Street.

Thank you for accepting my comments and including them in your decision making process. Should you have any questions or concerns, please do not hesitate to contact me.

Sincerely,

Handwritten signature of Richard F. Colburn in cursive script.
Richard F. Colburn



Sustainable _____ Attainable

Maryland Department of Planning
Maryland Historical Trust

November 6, 2013

Mr. John W. Phillips, Jr.
3799 Bradley Road
Federalburg, Maryland 21632

RE: NANTICOKE LODGE No. 172 A.F. and A.M.
Caroline County, Maryland

Dear Mr. Phillips:

The above referenced property was considered by the Governor's Consulting Committee for nomination to the National Register of Historic Places on Thursday, October 24. The Committee recommends nomination of the property. The next step in the process involves final preparation of the application materials by the Trust for submission to the National Register office in Washington. You will be advised in writing of the decision of the National Register on the nomination.

Sincerely,

Peter E. Kurtze
Administrator,
Evaluation and Registration

PEK/jmg

cc: State Clearinghouse #MD 20130806-0601
Hon. Michael Fluharty
Mr. Paul Baker Touart



Maryland Department of Planning
Maryland Historical Trust

Sustainable Attainable



April 10, 2014

Mr. J. Paul Loether, Chief
National Register of Historic Places
National Park Service
1201 I (eye) St., NW
Mail Stop 2280
Washington, DC 20005

RE: NANTICOKE LODGE No. 172 A.F. & A.M.
Caroline County, Maryland

Dear Mr. Loether:

Enclosed is documentation for nominating the Nanticoke Lodge No. 172 A.F. & A.M., Caroline County, Maryland to the National Register of Historic Places. The state review board and the owners concur in my recommendation for listing. Should you have questions in this matter, please contact Peter Kurtze at (410) 514-7649.

Sincerely,

J. Rodney Little
Director-State Historic
Preservation Officer

JRL/jmg

cc: State Clearinghouse #MD20130806-0601

Enclosures: NR form and 13 continuation sheets
1 USGS map
10 - 5x7 b/w prints

Correspondence: letter, Little to Phillips, 24 September 2013
letter, Janey to Little, 27 September 2013
letter, Colburn to Little, 7 October 2013
letter, Kurtze to Phillips, 6 November 2013

Martin O'Malley, Governor
Anthony G. Brown, Lt. Governor

Richard Eberhart Hall, AICP, Secretary
Amanda Stakem Conn, Esq., Deputy Secretary