



Piquette

Beaubien

411 PIQUETTE

SMALL, BIG  
LUMBER  
DISCO

STOP

Photo 1

Ford Piquette Avenue Plant

Detroit, MI

South facade + general view of Piquette Avenue street scape, looking west.

Nov., 2004

Photographer: Charles K. Hyde



[411 PIQUETTE]

GENERAL LINEN  
& UNIFORM  
SERVICE  
411 PIQUETTE • 312-873-9900

Photo #2

Ford Piquette Avenue Plant

Detroit, MI

South facade and adjacent building, looking northwest.



Photo #3

Ford Piquette Avenue, Plant

Detroit, MI

East facade along Beaubien Avenue, looking northwest.

November 2004

Photographer: Charles K. Hyde



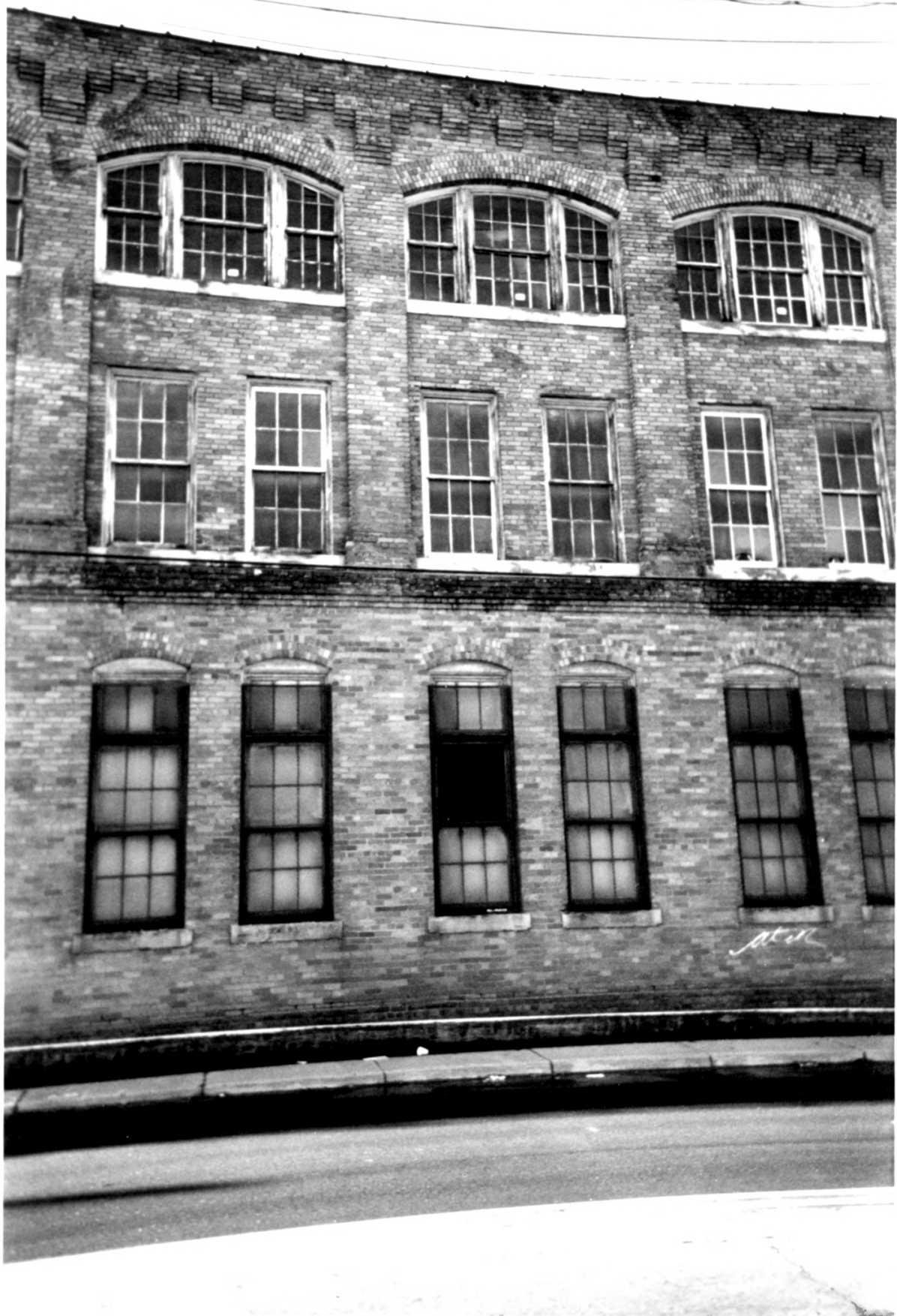


Photo 4

Ford Piquette Avenue Plant

Detroit, MI

East facade, detail of bay and window, looking SW

Nov. 2004

Charles K. Hyde





MONEY + [E] 660

Photo #5

Ford Piquette Ave Plant

Detroit, Michigan

East facade, detail of fire escape, looking southwest

Nov. 2004

Photographer Charles K. Hyde



Photo 6

Ford Piquette Avenue, Plant  
Detroit, MI

Northwest Corner, looking south  
Nov. 2004

Photographer: Charles K. Hyde





Photograph 7

Ford Aiguette Ave Plant

Detroit, MI

West facade and adjacent building, looking south

Nov, 2004

Charles K. Hyde





Photo 8

Ford Piquette Avenue Plant

Detroit, MI

West facade and open courtyard, looking southeast.

Nov. 2, 2004

Charles K Hyde



Photo 9

Ford Piquette Avenue Plant  
Detroit, MI

West facade, Retail of bays and windows, looking northeast

Nov. 2004

Photographer: Charles K. Hyde



Photo #10

Ford Piquette Avenue Plant

Detroit, MI

Northwest corner of building, looking north.

Nov, 2004

Charles K. Hyde



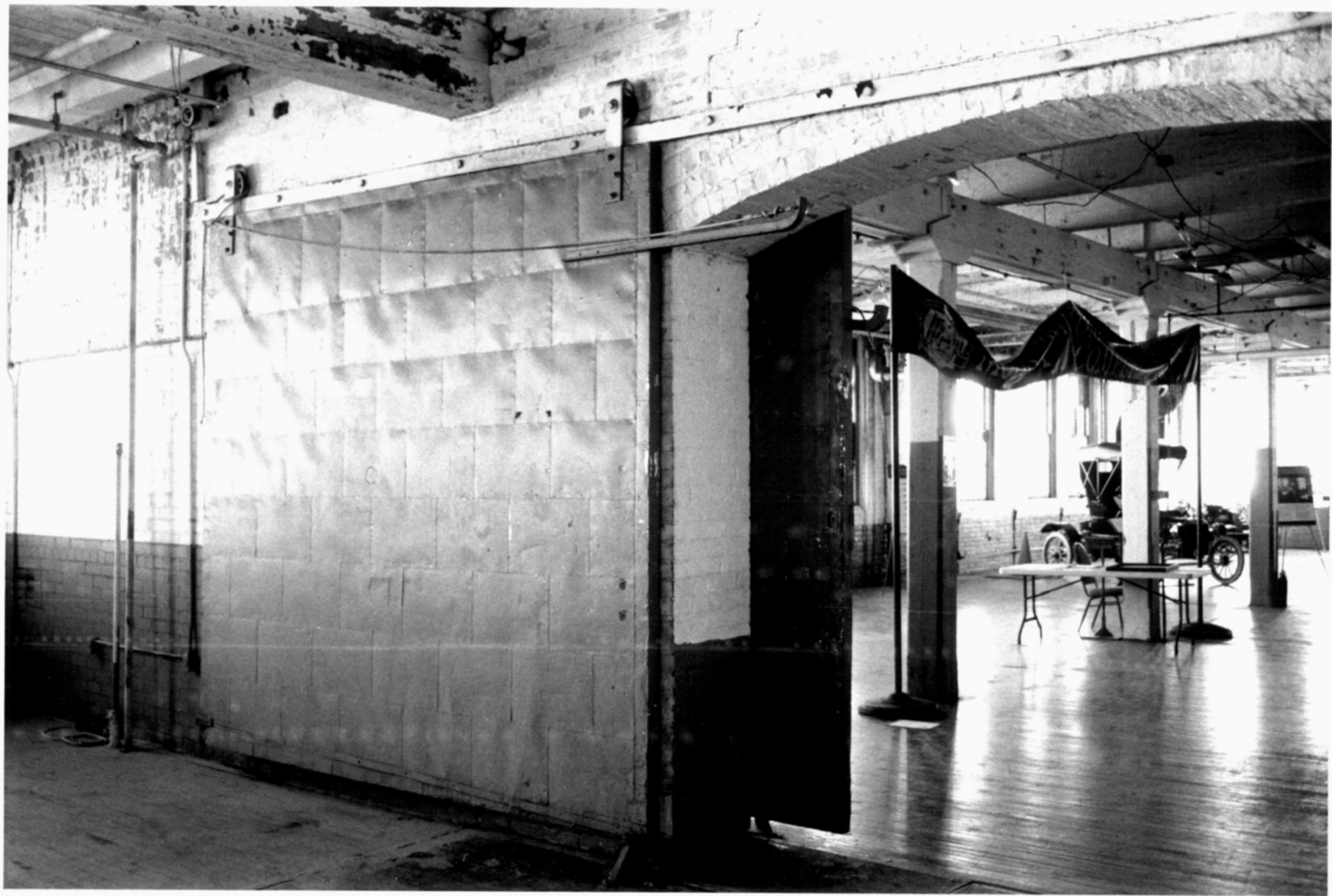


Photo #11

Ford Piquette Ave. Plant

Detroit, MI

Interior, second story, detail of fire doors, looking southeast.

Nov. 2004

Charles K. Hyde



EXIT

CAUTION  
FIRE ESCAPE

FIRE ESCAPE



Photo #12

Ford Piquette Avenue Plant

Detroit, MI

Interior, 2nd story, detail of firewall fire doors, looking northwest

Nov. 2004

Photographer: Charles K. Hyde



Photo #13

Ford Piquette Avenue Plant

Detroit, MI

Interior, 2nd story; looking northwest.

Nov. 2004

Charles K. Hyde