



Bay View

Emmet County, Michigan

View: Camera facing NW

Preacher's stand in foreground

Date: April 1986

Photographer: Brian Conway

Neg. on file at Michigan Bureau of History #5317

Photo 1 of 63



Bay View

Emmet County, Michigan

View: Camera facing NW

Date: April 1986

Photographer: Brian Conway

Neg. on file at Michigan Bureau of History #5317

Photo 2 of 63



Bay View

Emmet County, Michigan

Campus

View: Camera facing SE

Campground buildings in foreground

Epworth Hall in background

Date: April 1986

Photographer: Brian Conway

Neg. on file at Michigan Bureau of History #5317

Photo 3 of 63



Bay View

Emmet County, Michigan

Campus

View: Camera facing SE

Women's Council Building on left

Date: April 1986

Photographer: Brian Conway

Neg. on file at Michigan Bureau of History #5317

Photo 4 of 63





Bay View

Emmet County, Michigan

Campus

View: Camera facing SE

Date: April 1986

Photographer: Brian Conway

Neg. on file at Michigan Bureau of History #5317

Photo 5 of 63



Bay View

Emmet County, Michigan

Campus

View: Camera facing S

Loud Hall in foreground

Date: April 1986

Photographer: Brian Conway

Neg. on file at Michigan Bureau of History #5317

Photo 6 of 63



Bay View

Emmet County, Michigan

Campus

View: Camera facing SE

Women's Council Bldg., Epworth Hall in background

Date: April 1986

Photographer: Brian Conway

Neg. on file at Michigan Bureau of History #5317

Photo 7 of 63



Bay View

Emmet County, Michigan

View: Camera facing SE

Evelyn Hall on left, Verner Hall on right

Date: April 1986

Photographer: Brian Conway

Neg. on file at Michigan Bureau of History #5317

Photo 8 of 63





Bay View

Emmet County, Michigan

Campus

View: Camera facing S

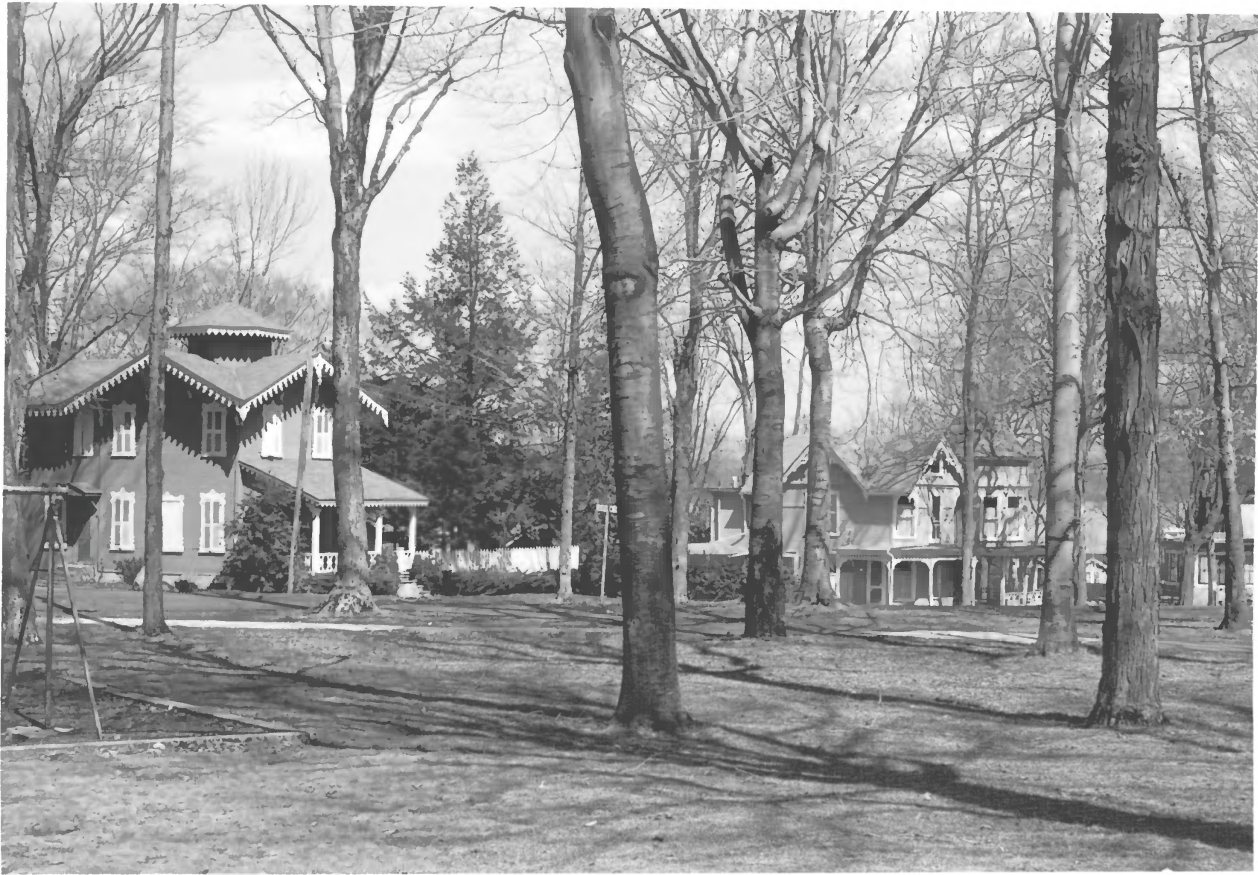
Evelyn Hall on left, Verner Hall on right

Date: April 1986

Photographer: Brian Conway

Neg. on file at Michigan Bureau of History #5317

Photo 9 of 63



Bay View

Emmet County, Michigan

View: Camera facing N

View from Campus towards Fairview St.

Date: April 1986

Photographer: Brian Conway

Neg. on file at Michigan Bureau of History #5317

Photo 10 of 63



Bay View

Emmet County, Michigan

View: Camera facing E

View of cottages on Block 21 facing the Bay  
Block 21

Date: April 1986

Photographer: Brian Conway

Neg. on file at Michigan Bureau of History #5317

Photo 11 of 63



Bay View

Emmet County, Michigan

View: Camera facing S

Streetscape on Fairview St.

Block 20, Lots 1-5

Date: April 1986

Photographer: Brian Conway

Neg. on file at Michigan Bureau of History #5317

Photo 12 of 63





Bay View

Emmet County, Michigan

View: Camera facing NW

View from Fairview Park towards  
cottages on Park St.

Date: April 1986

Photographer: Brian Conway

Neg. on file at Michigan Bureau of History #5317

Photo 13 of 63



Bay View

Emmet County, Michigan

View: Camera facing E

View of cottages on Encampment

Block 19, Lots 17-20

Date: April 1986

Photographer: Brian Conway

Neg. on file at Michigan Bureau of History #5317

Photo 14 of 63



Bay View

Emmet County, Michigan

View: Camera facing W

View along Fairview

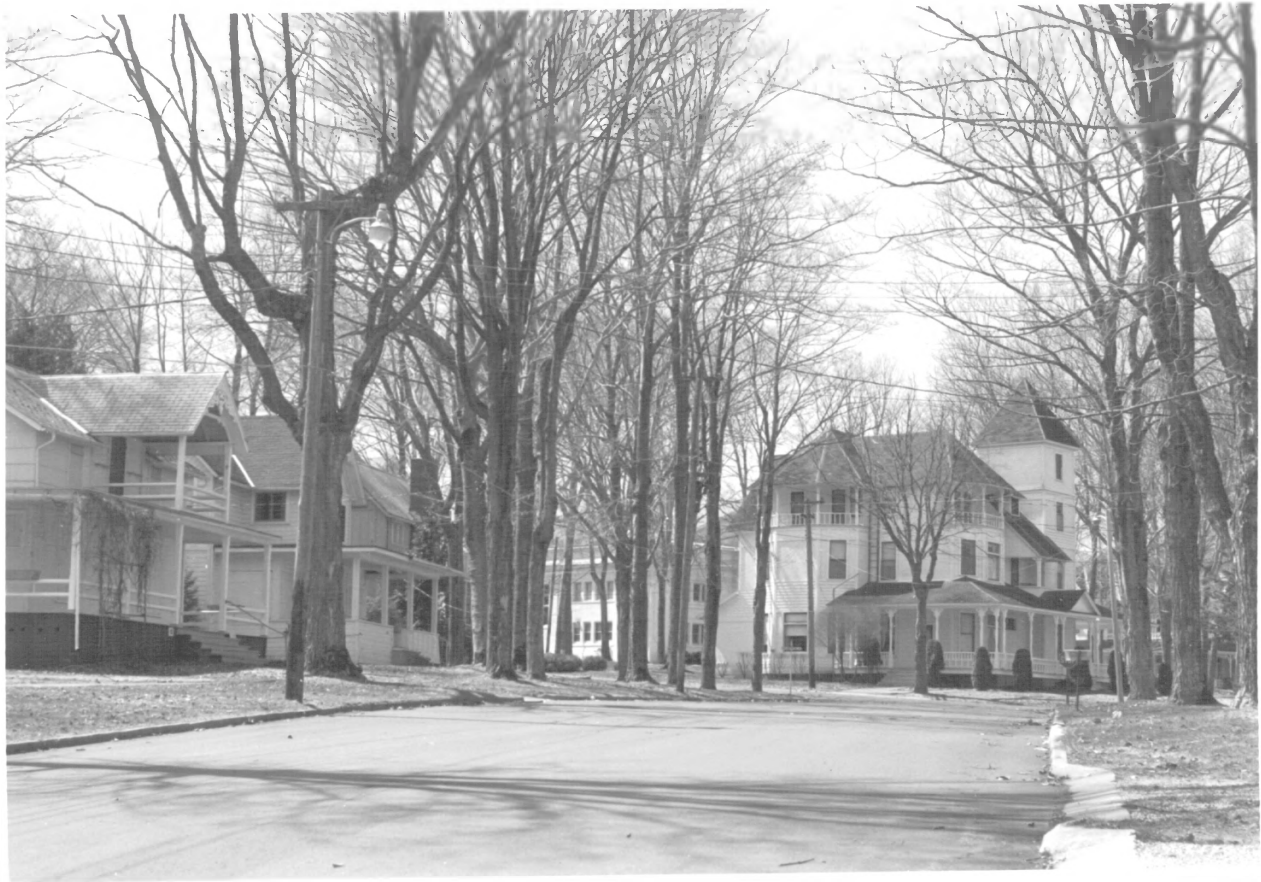
Block 20, Lots 11-15

Date: April 1986

Photographer: Brian Conway

Neg. on file at Michigan Bureau of History #5317

Photo 15 of 63



Bay View

Emmet County, Michigan

View: Camera facing SW

View up Beech towards Epworth Hall

Date: April 1986

Photographer: Brian Conway

Neg. on file at Michigan Bureau of History #5317

Photo 16 of 63





Bay View

Emmet County, Michigan

View: Camera facing E

View of Glendale towards

intersection of Encampment

Date: April 1986

Photographer: Brian Conway

Neg. on file at Michigan Bureau of History #5317

Photo 17 of 63



Bay View

Emmet County, Michigan

View: Camera facing E

View of Glendale

Block 22, Lots 9-12

Date: April 1986

Photographer: Brian Conway

Neg. on file at Michigan Bureau of History #5317

Photo 18 of 63



Bay View

Emmet County, Michigan

View: Camera facing E

View of Fairview

Block 20, Lots 1-5

Date: April 1986

Photographer: Brian Conway

Neg. on file at Michigan Bureau of History #5317

Photo 19 of 63



Bay View

Emmet County, Michigan

View: Camera facing NW

View of Terrace Ave.

Block 18, Lot 17-20

Date: April 1986

Photographer: Brian Conway

Neg. on file at Michigan Bureau of History #5317

Photo 20 of 63





Bay View

Emmet County, Michigan

View: Camera facing S

View up Lakeview

Block 20, Lots 30, 31 on right

Block 24, Lots 1, 2, 3 in background

Date: April 1986

Photographer: Brian Conway

Neg. on file at Michigan Bureau of History #5317

Photo 21 of 63



Bay View

Emmet County, Michigan

View: Camera facing W

View of Forest Ave.

Block 23, Lots 21-24

Date: April 1986

Photographer: Brian Conway

Neg. on file at Michigan Bureau of History #5317

Photo 22 of 63



Bay View

Emmet County, Michigan

View: Camera facing W  
View of Fairview Ave.

Block 20, Lots 10-15

Date: April 1986

Photographer; Brian Conway

Neg. on file at Michigan Bureau of History #5317

Photo 23 of 63



Bay View

Emmet County, Michigan

View: Camera facing E

View of Terrace Ave.

Block 18, Lots 16-21

Date: April 1986

Photographer: Brian Conway

Neg. on file at Michigan Bureau of History #5317

Photo 24 of 63





Bay View

Emmet County, Michigan

View: Camera facing NE

View of Reed

Block 34, Lots 1-5

Date: April 1986

Photographer: Brian Conway

Neg. on file at Michigan Bureau of History #5317

Photo 25 of 63



Bay View

Emmet County, Michigan

View: Camera facing S

View up Hemlock

Block 18, Lots 3-6

Date: April 1986

Photographer: Brian Conway

Neg. on file at Michigan Bureau of History #5317

Photo 26 of 63



Bay View

Emmet County, Michigan

View: Camera facing S

View of Knapp Ave.

Block 26, Lot 1 & 2

Date: April 1986

Photographer: Brian Conway

Neg. on file at Michigan Bureau of History #5317

Photo 27 of 63



Bay View

Emmet County, Michigan

View: Camera facing E

View of Glendale

Block 22, Lots 14-16

Date: April 1986

Photographer: Brian Conway

Neg. on file at Michigan Bureau of History #5317

Photo 28 of 63





Bay View

Emmet County, Michigan

View: Camera facing SE

View of Glendale

Block 22, Lots 9, 10

Date: April 1986

Photographer: Brian Conway

Neg. on file at Michigan Bureau of History #5317

Photo 29 of 63



Bay View

Emmet County, Michigan

View: Camera facing E

View along Glendale

Block 22, Lots 1A-2

Date: April 1986

Photographer: Brian Conway

Neg. on file at Michigan Bureau of History #5317

Photo 30 of 63



Bay View

Emmet County, Michigan

View: Camera facing SE

View of Glendale

Block 22, Lots 10, 11

Date: April 1986

Photographer: Brian Conway

Neg. on file at Michigan Bureau of History #5317

Photo 31 of 63



Bay View

Emmet County, Michigan

View: Camera facing N

View of Beech

Block 4, Lots 8, 9

Date: April 1986

Photographer: Brian Conway

Neg. on file at Michigan Bureau of History #5317

Photo 32 of 63





Bay View

Emmet County, Michigan

View: Camera facing N

View of Maple

Block 16, Lots 16, 17

Date: April 1986

Photographer: Brian Conway

Neg. on file at Michigan Bureau of History #5317

Photo 33 of 63



Bay View

Emmet County, Michigan

View: Camera facing SE

View of Fairview

Block 4, Lots 1-5

Date: April 1986

Photographer: Brian Conway

Neg. on file at Michigan Bureau of History #5317

Photo 34 of 63



Bay View

Emmet County, Michigan

View: Camera facing SE

View of Knapp

Block 26, Lots 6, 7

Date: April 1986

Photographer: Brian Conway

Neg. on file at Michigan Bureau of History #5317

Photo 35 of 63



Bay View

Emmet County, Michigan

View: Camera facing N

View of Terrace

Block 23, Lots 9-14

Date: April 1986

Photographer: Brian Conway

Neg. on file at Michigan Bureau of History #5317

Photo 36 of 43





Bay View

Emmet County, Michigan

View: camera facing north  
block 16, lots 16-18

Date: April 1986

Photographer: Brian Conway

Neg. on file at Michigan Bureau of History #5317

Photo 37 of 43



Bay View

Emmet County, Michigan

View: Camera facing N

231 Knapp

Block 22, Lot 22

Date: April 1986

Photographer: Brian Conway

Neg. on file at Michigan Bureau of History #5317

Photo 38 of 63



Bay View

Emmet County, Michigan

View: Camera facing S

600 Springside

Block 18, Lot 5, 6

Date: April 1986

Photographer: Brian Conway

Neg. on file at Michigan Bureau of History #5317

Photo 39 of 63



Bay View

Emmet County, Michigan

View: Camera facing N

607 Forest

Block 23, Lot 23

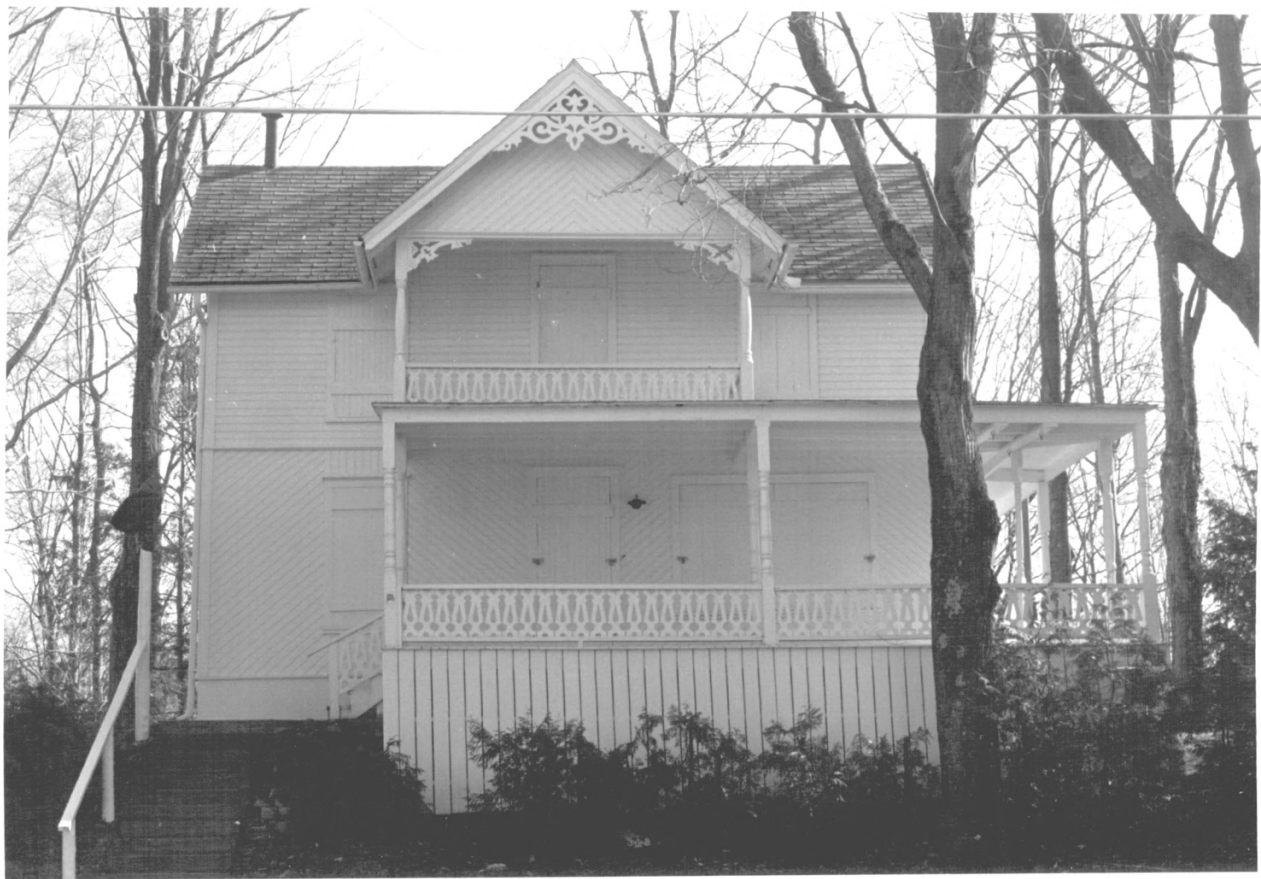
Date: April 1986

Photographer: Brian Conway

Neg. on file at Michigan Bureau of History #5317

Photo 40 of 63





Bay View

· Emmet County, Michigan

View: Camera facing S

232 Knapp

Block 26, Lot 6

Date: April 1986

Photographer: Brian Conway

Neg. on file at Michigan Bureau of History #5317

Photo 41 of 63



Bay View

Emmet County, Michigan

View: Camera facing S

226 Knapp

Block 26, Lot 3

Date: April 1986

Photographer: Brian Conway

Neg. on file at Michigan Bureau of History #5317

Photo 42 of 63



Bay View

Emmet County, Michigan

View: Camera facing S

604 Terrace

Block 23, Lot 16

Date: April 1986

Photographer: Brian Conway

Neg. on file at Michigan Bureau of History #5317

Photo 43 of 63



Bay View

Emmet County, Michigan

View: Camera facing S

604 Springside

Block 18, Lot 8

Date: April 1986

Photographer: Brian Conway

Neg. on file at Michigan Bureau of History #5317

Photo 44 of 63





Bay View

Emmet County, Michigan

View: Camera facing S

708 Bayside

Block 39, Lot 16

Date: April 1986

Photographer: Brian Conway

Neg. on file at Michigan Bureau of History #5317

Photo 45 of 63



Bay View

Emmet County, Michigan

View: Camera facing S

408 Lakeview

Block 24, Lot 3, 4, 5

Date: April 1986

Photographer: Brian Conway

Neg. on file at Michigan Bureau of History #5317

Photo 46 of 63



Bay View

Emmet County, Michigan

View: Camera facing S

218 Fairview

Block 20, Lot 10

Date: April 1986

Photographer: Brian Conway

Neg. on file at Michigan Bureau of History #5317

Photo 47 of 63



Bay View

Emmet County, Michigan

View: Camera facing S

302 Fairview

Block 20, Lot 13

Date: April 1986

Photographer: Brian Conway

Neg. on file at Michigan Bureau of History #5317

Photo 48 of 63





Bay View

Emmet County, Michigan

View: Camera facing SE

208 Fairview

Block 20, Lot 5 & 6

Date: April 1986

Photographer: Brian Conway

Neg. on file at Michigan Bureau of History #5317

Photo 49 of 63



Bay View

Emmet County, Michigan

View: Camera facing SW

322 Woodland

Block 2, Lots 10, 11

Date: April 1986

Photographer: Brian Conway

Neg. on file at Michigan Bureau of History #5317

Photo 50 of 63



Bay View

Emmet County, Michigan

View: Camera facing N

321 Park

Block 2, Lot 13

Date: April 1986 .

Photographer: Brian Conway

Neg. on file at Michigan Bureau of History #5317

Photo 51 of 63



Bay View

Emmet County, Michigan

View: Camera facing SE

308 Woodland

Block 2, Lots 2, 3, 20, 21

Date: April 1986

Photographer: Brian Conway

Neg. on file at Michigan Bureau of History #5317

Photo 52 of 63





Bay View

Emmet County, Michigan

View: Camera facing SE

320 Woodland

Block 2, Lot 9

Date: April 1986

Photographer: Brian Conway

Neg. on file at Michigan Bureau of History #5317

Photo 53 of 63



Bay View

Emmet County, Michigan

View: Camera facing SE

318 Woodland

Block 2, Lot 8

Date: April 1986

Photographer: Brian Conway

Neg. on file at Michigan Bureau of History #5317

Photo 54 of 63



Bay View

Emmet County, Michigan

View: Camera facing NW

409 Fairview

Block 2, Lot 12

Date: April 1986

Photographer: Brian Conway

Neg. on file at Michigan Bureau of History #5317

Photo 55 of 63



Bay View

Emmet County, Michigan

View: Camera facing W

409 Fairview

Block 2, Lot 12

Date: April 1986

Photographer: Brian Conway

Neg. on file at Michigan Bureau of History #5317

Photo 56 of 63





Bay View

Emmet County, Michigan

View: Camera facing N

223 Park

Block 1, Lot 11C

Date: April 1986

Photographer: Brian Conway

Neg. on file at Michigan Bureau of History #5317

Photo 57 of 63



PARK AV

Bay View

Emmet County, Michigan

View: Camera facing N

201 Park

Block 1, Lot 21

Date: April 1986

Photographer: Brian Conway

Neg. on file at Michigan Bureau of History #5317

Photo 58 of 63



Bay View

Emmet County, Michigan

View: Camera facing S

204 Fairview

Block 20, Lot 3 & 4

Date: April 1986

Photographer: Brian Conway

Neg. on file at Michigan Bureau of History #5317

Photo 59 of 63



Bay View

Emmet County, Michigan

View: Camera facing S

714 Woodland

Block 32, Lot 9

Date: April 1986

Photographer: Brian Conway

Neg. on file at Michigan Bureau of History #5317

Photo 60 of 63





Bay View

Emmet County, Michigan

View: Camera facing S

220 Glendale

Block 22, Lot 16

Date: April 1986

Photographer: Brian Conway

Neg. on file at Michigan Bureau of History #5317

Photo 61 of 63



Bay View

Emmet County, Michigan

View: Camera facing E

429 Moss

Block 19, Lot 11

Date: April 1986

Photographer: Brian Conway

Neg. on file at Michigan Bureau of History #5317

Photo 62 of 63



Bay View

Emmet County, Michigan

View: Camera facing E

431 Moss

Block 19, Lot 10

Date: April 1986

Photographer: Brian Conway

Neg. on file at Michigan Bureau of History #5317

Photo 63 of 63