



IRON & BRASS

FOUNDRY

IRON, BRASS, BRONZE & COMPOSITION

CASTINGS

and Metal PATTERNS Made to Order

MANUFACTURER

CRITTELDEN & CO

ALUMINUM and TIN

Figure B:

WILCOX, CRITTENDEN MILL COMPLEX
Middletown, Connecticut

View: 1886 photograph Mill A
William W. Wilcox I, William W.
Wilcox II (l-r) foreground

Facing: SE

Copy of original on file:
Greater Middletown Preservation Trust
Middletown, Connecticut

OCT 24 1996



#1. WILCOX, CRITTENDEN MILL COMPLEX
Middletown, Connecticut

View: Brownstone dam north end of
complex. Note ruins.

Facing: N

Negative on file Conn. Hist. Comm.

Cunningham Associates 2/86
ULI 2 4 1986



#2. WILCOX, CRITTENDEN MILL COMPLEX
Middletown, Connecticut

OCT 24 1986

View: Brownstone/concrete ruins
downstream from N dam.

Facing: N

Negative on file Conn. Hist. Comm.

Cunningham Associates

2/86



#3. WILCOX, CRITTENDEN MILL COMPLEX
Middletown, Connecticut

View: Mill A

Facing: SE

Negative on file Conn. Hist. Comm.

OCT 24 1986

Cunningham Associates

9/85



#4. WILCOX, CRITTENDEN MILL COMPLEX
Middletown, Connecticut

View: Mill A and B (l-r) OCT 24 1985

Facing: N

Negative on file Conn. Hist. Comm.

Cunningham Associates

9/85



#5. WILCOX, CRITTENDEN MILL COMPLEX
Middletown, Connecticut

View: Mill B and A (l-r); W elevations
Facing: SE
Negative on file Conn. Hist. Comm.

Cunningham Associates 9/85

OCT 24 1986



THE SERVICE
OF THE PEOPLE
1-800-333-3333
CALL 245-3334

NO PARKING
EXCEPT FOR
LOADING AND UNLOADING
PASSENGERS

#6. WILCOX, CRITTENDEN MILL COMPLEX
Middletown, Connecticut

View: Mill B, north and west elevations.
Facing: SE

Negative on file Conn. Hist. Comm.

Cunningham Associates OCT 24 1986 9/85



#7. WILCOX, CRITTENDEN MILL COMPLEX
Middletown, Connecticut OCT 24 1986

View: Interior detail Mill B
Stone buttresses in basement

Facing: E

Negative on file Conn. Hist. Comm.

Cunningham Associates

1981



#8. WILCOX, CRITTENDEN MILL COMPLEX
Middletown, Connecticut

View: Mill C, East elevation (So. Main St.)

Facing: N

Negative on file Conn. Hist. Comm.
OCT 24 1986

Cunningham Associates

9/85

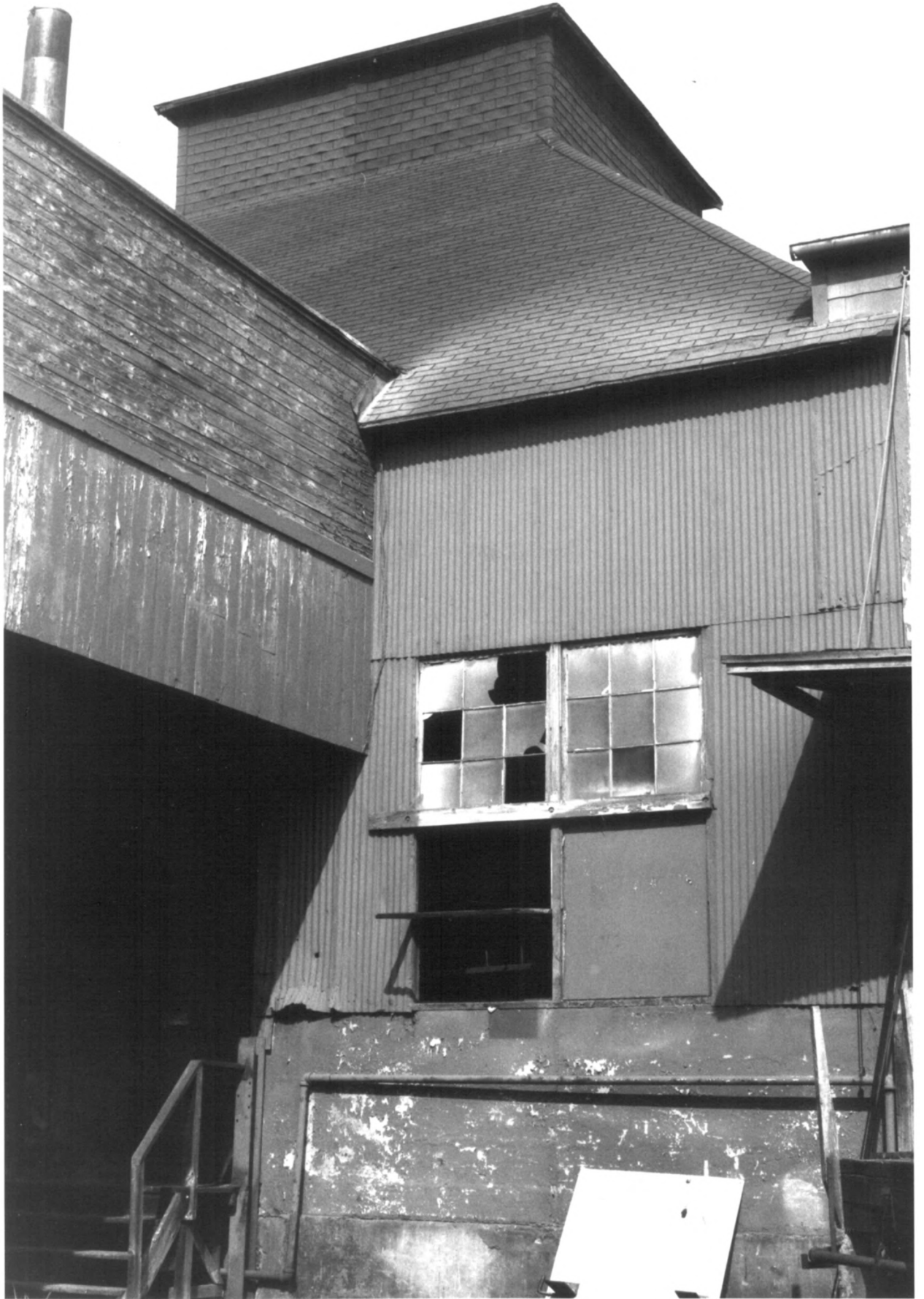


#9. WILCOX, CRITTENDEN MILL COMPLEX
Middletown, Connecticut

View: Mill C South elevation OCT 24 1986
Facing: N
Negative on file Conn. Hist. Comm.

Cunningham

9/85



#12. WILCOX, CRITTENDEN MILL COMPLEX
Middletown, Connecticut

View: Ventilating tower Mill C
Facing: NE
Negative on file Conn. Hist. Comm.

Cunningham Associates

3/85

OCT 24 1985



#13.WILCOX, CRITTENDEN MILL COMPLEX
Middletown, Connecticut

View: Mill D and addition
West and south elevation

Facing: NE

Negative on file Conn. Hist. Comm.

Cunningham Associates

OCT 24 1986
2/86



#14. WILCOX, CRITTENDEN MILL COMPLEX
Middletown, Connecticut

View: Addition to Mill D
South and east elevation

Facing: NW

Negative on file Conn. Hist. Comm.

Cunningham Associates UCI 2 4 126 2/86



#15. WILCOX, CRITTENDEN MILL COMPLEX
Middletown, Connecticut

View: Interior view Mill C
Forging Room north end

Facing: SE

Negative on file Conn. Hist. Comm.

Cunningham Associates

OCT 24 1986/85



#16. WILCOX, CRITTENDEN MILL COMPLEX
Middletown, Connecticut

View: Interior Mill C, galvanizing floor
Note galvanizing pits foreground

Facing: N

Negative on file Conn. Hist. Comm.

Cunningham Associates

OCT 24 1986 6/85



#17. WILCOX, CRITTENDEN MILL COMPLEX
Middletown, Connecticut

View: Interior view Mill A

Facing:

Negative on file Conn. Hist. Comm.

Cunningham Associates

UCI 2 4 1981



#18. WILCOX, CRITTENDEN MILL COMPLEX
Middletown, Connecticut

View: Dam at south end of complex
Note cylindrical structures in foreground.

Facing: SW

Cunningham Associates UCI 2 4 1986 2/86