

United States Department of the Interior National Park Service

AUG 31 1989

National Register of Historic Places Registration Form

NATIONAL REGISTER

This form is for use in nominating or requesting determinations of eligibility for individual properties or districts. See instructions in Guidelines for Completing National Register Forms (National Register Bulletin 16). Complete each item by marking "x" in the appropriate box or by entering the requested information. If an item does not apply to the property being documented, enter "N/A" for "not applicable." For functions, styles, materials, and areas of significance, enter only the categories and subcategories listed in the instructions. For additional space use continuation sheets (Form 10-900a). Type all entries.

1. Name of Property

historic name Camp (1) Misty Mount Historic District
other names/site number

2. Location

street & number Catoctin Mountain Park
city, town Thurmont
state Maryland code MD county Frederick code 021 zip code 21788

3. Classification

Ownership of Property: public-Federal (checked)
Category of Property: district (checked)
Number of Resources within Property: Contributing 35, Noncontributing 3 buildings, 1 structures, 4 objects

Name of related multiple property listing: ECW Architecture at Catoctin Mountain Park

Number of contributing resources previously listed in the National Register 0

4. State/Federal Agency Certification

As the designated authority under the National Historic Preservation Act of 1966, as amended, I hereby certify that this nomination request for determination of eligibility meets the documentation standards for registering properties in the National Register of Historic Places and meets the procedural and professional requirements set forth in 36 CFR Part 60. In my opinion, the property meets does not meet the National Register criteria. See continuation sheet.
Signature of certifying official
Date
State or Federal agency and bureau

In my opinion, the property meets (checked) does not meet the National Register criteria. See continuation sheet.
Signature of commenting or other official: Ed Burns
Date: 8/29/89
State or Federal agency and bureau: National Park Service

5. National Park Service Certification

I, hereby, certify that this property is:
[checked] entered in the National Register.
[] determined eligible for the National Register.
[] determined not eligible for the National Register.
[] removed from the National Register.
[] other, (explain:)
Signature of the Keeper: Patrick Andrews
Date of Action: 10/11/89

**United States Department of the Interior
National Park Service**

**National Register of Historic Places
Continuation Sheet**

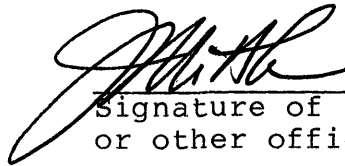
Section number 4 Page 1

Camp (1) Misty Mount Historic
District, Frederick County
Maryland

REGISTRATION FORM:

re: Emergency Conservation Work (ECW) Architecture at Catoctin
Mountain Park (Multiple Property Listing)

In my opinion, the property meets the National Register criteria.



Signature of commenting
or other official

6-23-89
Date

Maryland State Historic
Preservation Officer

6. Function or Use

Historic Functions (enter categories from instructions)
DOMESTIC/camp/institutional housing
RECREATION & CULTURE/outdoor recreation
LANDSCAPE/forest

Current Functions (enter categories from instructions)
DOMESTIC/camp
RECREATION & CULTURE/outdoor recreation
LANDSCAPE/forest

7. Description

Architectural Classification
(enter categories from instructions)

NPS rustic architecture
Development of RDAs

Materials (enter categories from instructions)

foundation stone
walls chestnut log and chink
waney board
roof cedar shingles
other

Describe present and historic physical appearance.

SUMMARY DESCRIPTION

The proposed historic district is bounded on the east by the west edge of Park Central Road, from about 800 feet north and down to 2,000 feet south of the camp entrance road; from this southern terminus, northwest approximately 1,800 feet; then northeast, about 2,300 feet; and southeast about 750 feet to meet with the northern terminus of the boundary at Park Central Road. The roughly trapezoidal-shaped district encompasses 72 acres and contains buildings and structures that support overnight organized-camping activities. Among the contributing buildings are a dining hall/kitchen, administration/office, infirmary, staff quarters, helps' quarters, and craft shop/nature cabin. These serve as a hub of buildings shared by occupants of the three individual unit camps. Each unit camp is situated like a satellite group of buildings that includes a latrine, lodge, six 4-person camper cabins, and one or two leaders' cabins. A swimming pool, adjacent shower house/laundry and two unit latrines are modern, non-historic constructions. All contributing buildings in the district are related to two themes: the human and conservation efforts of New Deal programs, and the development of NPS-sponsored rustic architecture in concert with the rise of outdoor recreation. The quality craftsmanship and carefully articulated design of architecture and landscape architectural elements developed from 1935 to 1938 has been maintained, thus preserving the spirit and character in which the camp was conceived and built. The district includes 35 contributing buildings, three non-contributing buildings and one non-contributing structure.

* * *

**United States Department of the Interior
National Park Service****National Register of Historic Places
Continuation Sheet**Emergency Conservation Work (ECW)
Architecture at Catoclin Mountain ParkSection number 7 Page 1

The public-use buildings and camp arrangements at Camp (1) Misty Mount were developed with a strong emphasis toward sensible uniformity, form, and layout.

In accordance with the size of the area--most of [the RDAs] contain from a few to several thousand acres--there are planned a number of organized camps. Each camp will serve a maximum of 150 people and will be divided into units, each accommodating not more than 30 people. A typical organized camp consists of a central kitchen and dining hall, a central wash and toilet house, an administrative building, staff quarters, service buildings and water and sewage facilities. The individual units of a camp consist of tents or shelters according to climate, a unit lodge with outdoor kitchen; a unit wash house and latrine.¹

Misty Mount (camp 1-C, for coed) was planned in 1936, with plans and justifications forwarded to NPS Region 1 for approval in mid-October. Initially it was to serve as the permanent camp for the Maryland League for Crippled Children (MLCC), and this temporarily stalled its development. But the thick forestation and rocky terrain was determined to be too taxing for children in braces or using crutches, so construction proceeded and was completed according to NPS childrens' camp standards in early 1937. Approval for electrification, water and sewer lines followed shortly.

The layout of unit camps and the shared facilities at Misty Mount follow the standardized formats recommended by the NPS guidebook Park and Recreation Structures. Accordingly, unit camps A and B are situated east of the central dining hall and shared buildings; unit D (there are three units, no C) is on the west flank. A swimming pool occupies a central location, although this non-contributing structure is a replacement of the original pool constructed at the same time as other facilities.

Swimming pools were incorporated into organized camp settings as a "forced substitute" when manmade or natural lake frontage was lacking--as at Catoclin.² In this case, probably to encourage water safety, the pool is immediately surrounded by the requisite shower and pump houses, staff and helps' quarters, and leaders' cabins.

All the contributing public-recreation buildings are constructed of log and chink, or the

¹ Harold Ickes, et al., p. 3-4.

² Albert Good, "Organized Camp Facilities" reprint from Park and Recreation Structures (1938), p. 15.

United States Department of the Interior
National Park ServiceNational Register of Historic Places
Continuation SheetSection number 7 Page 2Emergency Conservation Work (ECW)
Architecture at Catoclin Mountain Park

irregular waney board siding--most commonly these are combined in uniform romantic compositions of one-story plans with low rooflines. The former provided the most judicious use of native wood and were derived from local building traditions, complemented by the waney board. The specs for waney board planed at nearby Chopawamsic RDA at Triangle, Virginia, call for:

Random widths popular [sic], pine or oak boards 1-inch thick. Exposed edge shall be wavy edged and interior edge shall be squared. Exposed surface shall not vary in width more than 2 inches. All boards shall be sufficiently lapped to insure tight joint after shrinkage.³

Additional buildings that compose the hub of Camp Misty Mount reflect thoughtful rustic styling. The elegant T-plan dining hall (1937, **photo 1, illustration 1**) "harmoniously combines masonry, logs, and slabs in a structure of great interest."⁴ The open dining room from stone gable-end to gable-end is more than 100 feet, and combines a main block of vertical and horizontal waney board construction with telescoped sections of log and chink, each punctuated by hefty exterior stone chimneys. This design allowed the end alcoves to be closed off to serve as recreation lodges during the winter, for instance, without hampering use of the dining area. The interior of the dining room remains fitted with exposed rafters and hand-wrought iron chandeliers. Intersecting this block is the frame service wing containing the kitchen, washing area, and lavatories.

The administration/office (1937, **photo 2, illustration 2**) represents a typical arrangement that incorporates a trading post space. The gable-front block serves as a director's office, while the clerk operates out of an office in the wing. The styling combines log and chink with vertical and horizontal waney board, as well as a shed-porched entrance with stone foundation, and sash windows.

The staff quarters (1937, **photo 3**) is designed very much like the former building but reverses the application of log and board, and features a stone chimney at the cruck of the gable-front-and-wing plan. The windows are single and banked sash, with a single entry from the raised front porch.

The infirmary (1938, **photo 4**) also combines the two types of construction in a tenuated T-plan with a single rear arm and telescoped units off the main block. A stone

³ Virginia SP-22, Job No. 113-E, Staff and Help Latrine Specifications (undated).

⁴ Good, reprint, pp. 62-63.

United States Department of the Interior
National Park ServiceNational Register of Historic Places
Continuation SheetEmergency Conservation Work (ECW)
Architecture at Catoctin Mountain ParkSection number 7 Page 3

chimney rises out of roofline, complementing the conspicuous stone foundation piers.

Three more camp buildings reflect a minimal rectangular plan that differs only through variation of the entryways. The craft shop/nature cabin (1938, **photo 5**) is six bays long with an off-center recessed entrance. Waney board construction distinguishes the bottom portion of the facade, atop which are banked four-light windows; a discreet detail is the rustic bracing of the doorway. Of similar conception is the storage building (1938, **photo 6**). Constructed of log and chink, and lacking fenestration on the main facade, the wide recessed entrance nearly creates a U-plan underneath the roof. Original casements and wood shutters are extant on the gable end, including hand-wrought hardware. Last, the helps' cabin (1938, **photo 7**) is a small 348-square-foot building of log and chink, highlighted by matching, inverse shed porches enclosed by waney board; the identical building design is found at Camp Greentop.

The unit camps are composed of three types of buildings: cabins, latrines, and lodges. Design of the cabins at Misty Mount were based on a photographic study made of vernacular architecture in the region prior to camp construction, predominantly modest log structures with wide overhanging eaves. Thus, the leaders' and four-person cabins (1937, **photo 8**) are built in versatile rectangular and square plans with gable-end or front-facing gables, extended front eaves, and modest porches. Eight cabins represent the three-bay rectangular model of 288 square feet; and 10 are five-bay square plans of 270 square feet. These were chosen to accommodate the landscape, air, and vista available on each site. All are constructed with V-notched chestnut chinked with cement. Additional texture is provided by stone pier foundations and entry steps, cedar shingles, and irregular waney board ornamenting the roof gable. Good (**illustration 3**) credits this building's styling as "outstanding for its simple excellence and true craftsmanship."⁵

The unit wash house/latrine (1937, **photo 9**) is a semi-open construction with two-thirds of the side facades enclosed, the front one-third open and supported by log posts with built-in shelves. The stone foundation is topped by poured concrete; walls are constructed of vertical waney board with the upper third filled by wood lattice that permits ventilation. The bilaterally symmetrical interior features toilets and trough lavatories. At 378 square feet, Good (**illustration 4**) considers this a fairly spacious building.⁶

The lodge here (1937, **illustration 5**) is a picturesque, seven-bay rectangular plan with a dramatic exterior stone chimney featuring an outdoor hearth. A variety of low, horizontal

⁵ Good, reprint, p. 75.

⁶ Good, reprint, pp. 32-33.

United States Department of the Interior
National Park Service

National Register of Historic Places
Continuation Sheet

Emergency Conservation Work (ECW)
Architecture at Catoctin Mountain Park

Section number 7 Page 4

silhouettes are provided by the gable-end pavilion covering this secondary "kitchen" and the rear shed porch; this is enhanced by paired casement windows along the main facade. According to Good:

The appeal to the eye made by this squared log structure . . . is unsurpassed by that of any unit lodge that has been pictured. It is not often economically logical to employ such expertly fashioned log construction in a building program having social objectives primarily. This is a great pity in view of the romance that a revival of pioneer methods can conjure up for youth.⁷

All contributing structures in the district are related to two themes: the human and conservation efforts of New Deal programs, specifically the development of RDAs, and the development of NPS-sponsored rustic architecture in concert with the rise of outdoor recreation. The quality craftsmanship and carefully articulated design of architecture and landscape architectural elements developed from 1935 to 1938 has been maintained, thus preserving the spirit and character in which the camp was conceived and built. The district includes 18 cabins, seven staff cabins, three lodges, three latrines, a dining hall/kitchen, administration/office, infirmary, craft shop/nature cabin, pumphouse, shower house/laundry, and swimming pool. There are 35 contributing buildings, three non-contributing buildings and one non-contributing structure.

* * * *

INVENTORY (* = Non-contributing)

Dates, dimensions, and costs are taken from the March 1953 inventory located in park files.

Dining Hall/Kitchen (13, photo 1): banked stone, stone pier and concrete foundation; T-plan; V-notch chestnut log with concrete chinking, and vertical/horizontal waney board construction; 14 casement and 45 double-hung sash; telescoping main block with stone gable-end walls and exterior chimneys; double front doors accessed by raised central porch supported by round-log posts; central stone chimney in rear arm with concrete loading platform, stone steps; hand-wrought iron hinges; cedar shingles. **Interior:** dining area occupies top of T, tiled floor, exposed rafters; (6) hand-wrought iron chandeliers suspended by 3/4" steel chain, stone hearth; modernized kitchen includes stainless-steel fixtures and appliances. Built 1937; 3,430 square feet; original cost \$9,550. [Good, p. 63]

⁷ Good, reprint, pp. 40-41.

United States Department of the Interior
National Park ServiceNational Register of Historic Places
Continuation SheetSection number 7 Page 5Emergency Conservation Work (ECW)
Architecture at Catoctin Mountain Park

Administration/Office (15, photo 2): stone and stone pier foundation; 5-bay gable-facing rectangular plan with cutout shed-roofed porch, stone foundation, squared log posts; V-notch chestnut log with concrete chinking, and vertical/horizontal waney board construction; 6/6 and 1/1 sash; asphalt roof. Built 1937; 429 s.f.; \$900. [Good, p. 25]

Infirmary (16, photo 4): stone pier foundation; irregular T-plan; main block of V-notch chestnut log and concrete chinking construction, with extended arms of vertical/horizontal waney board; gable roof with cedar shingles; off-center stone chimney; (16) double-hung 6/6 sash, some screened; screened-in front porch with stone floor. **Interior:** built-in closets, two half bathrooms, asphalt floor tile. Built 1937; 1,010 s.f.; \$2,900.

Staff Quarters (17, photo 3): stone pier foundation; V-notch chestnut log with concrete chinking, and vertical/horizontal waney board construction; 3-bay T-plan with raised, shed-roofed porch, wood deck, squared log posts; stone steps, central chimney; paired and banked 8-light casements and 1/1 modern storm windows; cedar shingles. Built 1937; 952 s.f.; \$2,200.

Helps' Cabin (18, photo 7): stone pier foundation, steps; rectangular plan with partially enclosed, central front and rear shed-roofed porches, log rails and post; V-notch chestnut log with concrete chinking, and vertical/horizontal waney board construction; gable roof with cedar shingles; single wood and screened doors. Built 1937; 348 s.f.; \$800.

Storage (19, photo 6): stone pier foundation; rectangular/cross plan with recessed central entryway; V-notch chestnut log with concrete chinking, and vertical/horizontal waney board construction; gable roof with cedar shingles; wood frame windows with casement shutters; hand-wrought iron hinges. Built 1938; 424 s.f.; \$950.

Craft Shop/Nature Cabin (20, photo 5): stone pier foundation, front and rear steps; 7-bay rectangular plan with recessed off-center entryway; vertical/ horizontal waney board construction; gable roof with cedar shingles; 4-light wood frame windows; double wood door with hand-wrought iron hinges. Built 1938; 469 s.f.; \$900.

Pumphouse (22): banked stone foundation and lower portion of structure, upper portion constructed of vertical waney board; 1/3-bay rectangular plan; central double wood utility doors; concrete floor; gable roof with cedar shingles. Built 1940; 308 s.f.; \$1,200.

Cabins A Unit: (26, 27, 28, 29, 30, 31)

Cabins B Unit: (36, 37, 38, 39, 40, 41)

Cabins D Unit: (46, 47, 48, 49, 50, 51)

4-person occupancy; stone pier foundations, front steps; V-notch chestnut log with concrete chinking, and vertical/horizontal waney board construction; some feature porch railings of log;

United States Department of the Interior
National Park ServiceNational Register of Historic Places
Continuation SheetSection number 7 Page 6Emergency Conservation Work (ECW)
Architecture at Catoclin Mountain Park

gable roof with cedar shingles. Two alternating plans change entry and orientation to accommodate site topography:

- a) cabins 27, 29, 39, 41, 48, 49, 50, 51: 3-bay rectangular gable-end entry; 288 s.f.; \$700; and
 - b) cabins 26, 28, 30, 31, 36, 37, 38, 40, 46, 47: 5-bay square plan, side entry; 270 s.f.; \$700.
- All built 1937. [Good, p. 75]

Leaders' Cabins: (A-25; B-34, 35; D-44 [photo 8], 45): stone pier foundation, front foundation; V-notch chestnut log with concrete chinking, and vertical waney board gables; 1-bay gable-front rectangular plan with overhanging eaves; central wood door with hand-wrought iron hinges; cedar shingles. Built 1937; 195 s.f.; \$600.

Unit Lodge: (A-23; B-32; D-42): stone pier foundation; V-notch chestnut log with concrete chinking, and vertical waney board construction; 7-bay rectangular plan with gable-end stone chimney featuring a secondary outdoor "kitchen" hearth, gable-roofed pavilion with stone floor; rear, partial shed-roofed porch; hand-wrought iron hinges; cedar shingles; 13 pairs 8-light wood casement windows, screened. Built 1937; 1,042 s.f.; \$2,500. [Good, p. 40]

Wash house/latrine (D-43, photo 9): stone and concrete foundation; gable-front rectangular plan with one-third open porch, round-log posts; vertical waney board construction; wood lattice on upper third of elevation; cedar shingles. Built 1937; 378 s.f.; \$750. [Good, p. 33]

* **Showerhouse/Laundry** (193): concrete foundation, floor; wood frame construction; flat, wood-shingled roof. Built 1969.

* **Latrine:** (A-242; B-243): concrete-block foundation; frame structure; gable roof with asphalt shingles. Built 1983.

* **Swimming pool:** rectangular; dates to WPA construction in 1937-38, but since modernized beyond recognition.

8. Statement of Significance

Certifying official has considered the significance of this property in relation to other properties:

nationally statewide locally

Applicable National Register Criteria A B C D

Criteria Considerations (Exceptions) A B C D E F G

Areas of Significance (enter categories from instructions),

Period of Significance

Significant Dates

Architecture
 Entertainment/Recreation
 Conservation

1935-38

1937

Cultural Affiliation

n/a

Significant Person

n/a

Architect/Builder

WPA, NPS laborers

State significance of property, and justify criteria, criteria considerations, and areas and periods of significance noted above.

Camp (1) Misty Mount Historic District qualifies for inclusion in the National Register of Historic Places under criteria A and C, for state and local significance. All contributing buildings in the park are 50 years or older and represent a single property type--public-recreation. The grouping of 35 contributing buildings is intact and representative of two themes: the human and natural conservation efforts of New Deal programs, specifically the development of RDAs, and the development of NPS-sponsored rustic architecture in concert with the rise of outdoor recreation--both movements of the 1930s. While not individually noteworthy, the collective buildings of this organized cabin camp represent a design harmony with the natural and manmade landscape, as well as homage to indigenous materials, vernacular styling, and a hand-crafted aesthetic.

* * *

Continuous occupation of the mountainous region above Maryland's Monocacy River Valley, where farming and timber harvesting were the primary economies from the 19th through early 20th centuries, severely depleted local natural resources. The recreational demonstration area program was instituted in the mid-30s to identify just such lands in proximity to urban centers--on which to establish model resource-reclamation projects.

Development of Catoctin RDA/Mountain Park was initiated in 1934; public-use buildings were completed by 1938, natural resource development continued until 1941, when all work ceased because of the threat of war. This was one of 46 RDAs established nationwide, the only such facility in Maryland, and most exclusively, it was one of very few recreation projects designed for handicapped campers. The park gained added importance in 1942 when FDR selected Camp (3) Hi-Catoctin as a secure presidential retreat, a function maintained today.

The landscape and architectural designs are attributed to architects, landscape architects, and engineers of the National Park Service. Among the accomplishments of the

See continuation sheet

United States Department of the Interior
National Park ServiceNational Register of Historic Places
Continuation SheetEmergency Conservation Work (ECW)
Architecture at Catoctin Mountain ParkSection number 8 Page 1

many Emergency Conservation Work programs were RDAs, which served a twofold purpose: to rescue land depleted of its natural resources, and to provide a recreation destination for underprivileged city children. The facilities were specifically developed to offer an out-of-doors experience to the greatest number of children with the least cost. The Catoctin camps hosted programs of the YWCA, YMCA, and Maryland League for Crippled Children.

The organized camp was a new genre of park facility in the 1930s. It features a central collection of buildings shared by all campers, including the dining hall, infirmary, and craft lodge. Beyond this hub are situated individual unit camps made up of several camper cabins, a lodge, latrine, and perhaps a leaders' cabin. A network of hiking trails links the buildings to miscellaneous sites, including campfire rings, playfields, and a swimming pool. Such buildings and their arrangements are common to all organized camps, and vary according to the natural elements incorporated into the layout.

The buildings are oriented to harmonize with native materials and local architectural styles. At Catoctin, chestnut logs and waney board reflect rustic traditions combined with building plans and elevations that are uniformly one-story, horizontal compositions nestled into the natural profile of the land. These are enhanced by the additional use of wood shingles and stone in the construction of steps, foundation piers, and chimneys. Building features such as casement windows, braced posts, hand-wrought hardware, and interior roof trusses contribute romantic, as well as realistic, highlights.

The interest in further construction of these rustic public-recreation facilities and the financial means to do so ended with World War II. This watershed event marked the end of federally sponsored park development and NPS-directed rustic architectural styling. Catoctin was completed just prior to the war and Misty Mount remains in its original condition as a working organized-camp facility.

9. Major Bibliographical References

See Major Bibliographic References of the Multiple Property Documentation Form for "Emergency Conservation Work (ECW) Architecture at Catoctin Mountain Park."

See continuation sheet

Previous documentation on file (NPS):

- preliminary determination of individual listing (36 CFR 67) has been requested
- previously listed in the National Register
- previously determined eligible by the National Register
- designated a National Historic Landmark
- recorded by Historic American Buildings Survey # _____
- recorded by Historic American Engineering Record # _____

Primary location of additional data:

- State historic preservation office
- Other State agency
- Federal agency
- Local government
- University
- Other

Specify repository: _____

10. Geographical Data

Acreage of property 72

UTM References

A	1,8	289980	4391120
	Zone	Easting	Northing

B	1,8	290140	4391000
	Zone	Easting	Northing

C	1,8	290070	4390770
	Zone	Easting	Northing

D	1,8	290090	4390530
	Zone	Easting	Northing

E-18 2 8 9 9 0 0 4 3 9 0 2 4 0

F- 1 8 2 8 9 5 1 0 4 3 9 0 5 6 0

See continuation sheet

Verbal Boundary Description

The boundary of the nominated historic district is delineated by the polygon whose vertices are marked by the UTM reference points A through F.

See continuation sheet

Boundary Justification

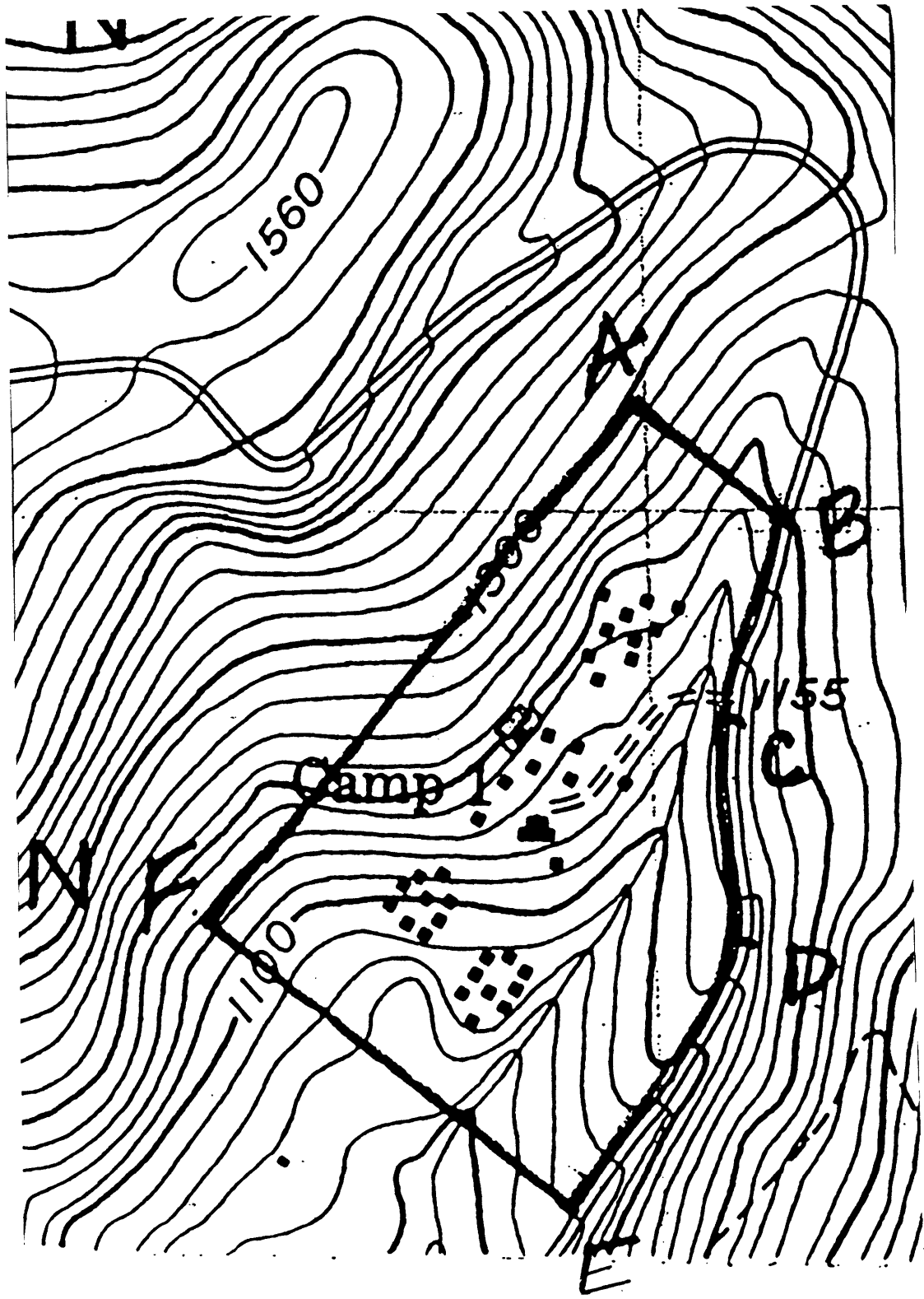
The boundary includes the organized camp buildings and landscape features that have historically been part of Camp (1) Misty Mount that maintain historic integrity. There are no natural topographical features with which to align the border; Park Central Road does serve as the eastern border to allow the inclusion of a Hunting Creek tributary in the district.

See continuation sheet

11. Form Prepared By

name/title Sara Amy Leach -- Historian
organization NPS-National Capital Region date September 7, 1988
street & number 1100 Ohio Dr., S W telephone 202-485-9817
city or town Washington, D.C. state _____ zip code 20242

Camp (1) Misty Mount Historic District



MAP: 3A

CAMP (1) MISTY MOUNT HISTORIC DISTRICT

■ = Non-historic, non-contributing

Dining Hall/Kitchen (13, photo 1)

Administration/Office (15, photo 2)

Infirmary (16, photo 4)

Staff Quarters (17, photo 3)

Helps' Cabin (18, photo 7)

Storage (19, photo 6)

Craft Shop/Nature Cabin (20, photo 5)

Pump house (22)

Cabins A Unit: (26, 27, 28, 29, 30, 31)

Cabins B Unit: (36, 37, 38, 39, 40, 41)

Cabins D Unit: (46, 47, 48, 49, 50, 51)

Leaders' Cabins: (A-25; B-34, 35; D-44 [photo 8], 45)

Unit Lodge: (A-23; B-32; D-42)

Washhouse/latrine (D-43, photo 9)

⊙ = Campfire Ring

Showerhouse/Laundry (193)

Latrine: (A-242; B-243)

Swimming pool

