

JAN 14 2000

NATIONAL REGISTER OF HISTORIC PLACES REGISTRATION FORM

This form is for use in nominating or requesting determinations of eligibility for individual properties or districts. See instructions in "Guidelines for Completing National Register Forms" (National Register Bulletin 16). Complete each item by marking "X" in the appropriate box or by entering the requested information. If an item does not apply to the property being documented, enter "N/A" for "not applicable." For functions, styles, materials, and areas of significance, enter only the categories and subcategories listed in the instructions. For additional space use continuation sheets (Form 10-900a). Type all entries.

1. Name of Property

70

historic name BLACKSHEAR DEPOT
other names/site number N/A

2. Location

street & number 200 South Central Avenue
city, town Blackshear
county Pierce code GA 229
state Georgia code GA zip code 31516

(N/A) vicinity of

(N/A) not for publication

3. Classification

Ownership of Property:

- private
- public-local
- public-state
- public-federal

Category of Property:

- building(s)
- district
- site
- structure
- object

Number of Resources within Property:

Contributing

Noncontributing

buildings	1	0
sites	0	0
structures	0	0
objects	0	0
total	1	0

Contributing resources previously listed in the National Register: N/A

Name of previous listing: N/A

Name of related multiple property listing: N/A

4. State/Federal Agency Certification

As the designated authority under the National Historic Preservation Act of 1966, as amended, I hereby certify that this nomination meets the documentation standards for registering properties in the National Register of Historic Places and meets the procedural and professional requirements set forth in 36 CFR Part 60. In my opinion, the property meets the National Register criteria. () See continuation sheet.

Richard Cloves 1-7-00
Signature of certifying official Date

W. Ray Luce, Division Director and
Deputy State Historic Preservation Officer

In my opinion, the property () meets () does not meet the National Register criteria. () See continuation sheet.

Signature of commenting or other official Date

State or Federal agency or bureau

5. National Park Service Certification

I, hereby, certify that this property is:

entered in the National Register

Edson H. Beall 2/10/00

() determined eligible for the National Register _____

() determined not eligible for the National Register _____

() removed from the National Register _____

() other, explain: _____

() see continuation sheet

Beall
Keeper of the National Register Date

6. Function or Use

Historic Functions:

TRANSPORTATION/rail-related

Current Functions:

GOVERNMENT/office

7. Description

Architectural Classification:

OTHER: depot

Materials:

foundation	brick
walls	brick
roof	metal
other	N/A

Description of present and historic physical appearance:

The Blackshear Depot is located one block south of the central business district and adjacent to the city hall and city park in Blackshear, the county seat of Pierce County. The Blackshear Depot is a one-story, brick building with the typical Georgia small-town-depot long, narrow form. Constructed in 1917, it has a long rectangular form with a wide-eaved hipped roof with triangular roof brackets over the main section and a gabled-end roof over the long, freight portion of the building. The center portion of the building projects out on the track side and has a brick parapet. Other exterior features include brick chimneys, two-colored brick laid in the Flemish bond, 6/6 windows, wood window and door surrounds, and 4-light wood paneled doors with 6-light transoms. The freight portion of the depot is elevated and surrounded on three sides by a wooden platform for loading and unloading.

The 6,300 square feet of the depot is divided into three main areas: passenger waiting rooms, offices, and the freight room. During 1978 to 1979, the waiting rooms were altered for office space with wall and floor coverings and dropped ceilings. The freight/warehouse area is a large open space with wood plank flooring and walls, exposed rafters, and scales which were used to weight outgoing and incoming freight. It is used for storage and remains unaltered.

There is no landscaping associated with the building.

8. Statement of Significance

Certifying official has considered the significance of this property in relation to other properties:

nationally statewide locally

Applicable National Register Criteria:

A B C D

Criteria Considerations (Exceptions): N/A

A B C D E F G

Areas of Significance (enter categories from instructions):

Architecture
Transportation

Period of Significance:

1917-1950

Significant Dates:

1917

Significant Person(s):

N/A

Cultural Affiliation:

N/A

Architect(s)/Builder(s):

Savannah, Florida, and Western Railroad Company

United States Department of the Interior
National Park Service

National Register of Historic Places Continuation Sheet

Section 8--Statement of Significance

Narrative statement of significance (areas of significance)

The depot is a community landmark building in Blackshear, representing the importance of the railroad to the history of the town and its economy. The Savannah to Thomasville railroad was the stimulus for the founding of Pierce County and the county seat of Blackshear, and the railroad was a vital part of Blackshear's economy through the mid-20th century.

The Blackshear Depot is significant in architecture as good example of an early twentieth-century brick depot and freight warehouse combination. The form of the building is typical of Georgia's small town passenger and freight depots with its long, low, narrow form divided into three sections-- passenger waiting rooms, offices, and freight space. Architectural detailing of the building is also typical of a Georgia small town depot with its wide eaves, brackets, and Flemish bond brick pattern with a stringcourse. The depot retains its original doors, windows, and wooden elevated loading platform. The building is also significant for its intact freight warehouse interior which has undergone no changes and still retains its large open floor plan, scales, and wooden floors, rafters, beams, and walls.

The depot is significant in transportation as the center of passenger and freight rail transportation in Blackshear. The depot was constructed in 1917 by the Savannah, Florida, and Western Railroad Company and incorporated the earlier wood depot into the design for freight use. The railroad also provided the means for a successful agricultural-based economy by transporting cotton, timber, and other crops to areas outside of southeast Georgia. Passenger service continued until the 1950s and the depot was used for freight until the 1970s. As the only railroad-related building in Blackshear, the depot represents the importance of the railroad to the history of the town.

National Register Criteria

The Blackshear Depot is eligible under National Register Criterion A for its historical association with the development of the town of Blackshear. The depot is eligible under National Register Criterion C as an excellent example of an early twentieth-century depot with distinct passenger and freight sections.

Criteria Considerations (if applicable)

N/A

United States Department of the Interior
National Park Service

National Register of Historic Places Continuation Sheet

Section 8--Statement of Significance

Period of significance (justification)

The period of significance is from the construction of the depot in 1917 until the end of the historic period, 1950. The period of significance is extended to the end of the historic period, since the Blackshear Depot continued to serve as a passenger and freight station until the late 1950s and continued as a freight depot until the mid-1970s.

Contributing/Noncontributing Resources (explanation, if necessary)

There is only one building on the nominated property and it is a contributing building.

Developmental history/historic context (if appropriate)

****Note: The following history was prepared by Michael Jacobs, Preservation Planner for the Southeast Georgia Regional Development Center, "Blackshear Depot," Historic Property Information Form additional information, November, 1996 . On file at the Historic Preservation Division, Georgia Department of Natural Resources, Atlanta, Georgia.**

The area that was to become Pierce County with the county seat of Blackshear was part of the land ceded to the government by the Creek Indians in the Treaty of Fort Jackson in 1813. This land was given away in the Land Lottery of 1820 after being divided into 490-acre plots. Because of its isolation, many people who were lucky recipients of land in this area never journeyed to the region to possess their claims.

The founding of Pierce County and the town of Blackshear was the direct result of the railroad industry. In 1847, the Atlantic and Gulf Railroad proposed a line of tracks running from Savannah to Thomasville, passing through what would become Pierce County and Blackshear. On May 1, 1859, the Atlantic and Gulf Railroad had reached the unincorporated town of Blackshear. Incorporation followed on December 16, 1859. Because of the railroad, people had moved into what was to become Blackshear in anticipation of the advantages connected to transportation. Stores were being built by owners anxious to take hold of this opportunity to transport their merchandise to other places. By 1876, there were twelve businesses, a steam grist mill, a cotton gin, a turpentine distillery, and a large saw mill. These businesses flourished because of accessible transportation.

The growth of the timber industry led to large areas of cleared land for farming. Agriculture became another major means of livelihood for the residents of the area. As farming increased, so did the need for transportation for agricultural commodities. Cotton became the leading crop for many years and it was shipped out via railroad. Testifying to the cooperation of the railroad and business

United States Department of the Interior
National Park Service

National Register of Historic Places Continuation Sheet

Section 8--Statement of Significance

owners, a spur line was built to the Brantley Company warehouse where cotton was loaded directly onto the trains.

Not only did the trains carry timber and commodities, but they also carried people. It was noted that on July 4, 1859, the train gave the citizens of Blackshear a free ride to Yankeetown, later known as Waycross, a distance of about ten miles. These trains ran in both directions so many people came to visit and to live in Blackshear as well.

The railroad suffered during the Civil War. The cotton failure of 1871 followed by the financial panic of 1873 forced the Atlantic and Gulf Railroad into receivership. On November 4, 1879, Henry B. Plant bought the railroad and renamed it the Savannah, Florida and Western Railroad Company. On July 1, 1902, it merged with Atlantic Coast Line which later became Seaboard Coast Line.

The first depot, built of wood, caught fire between the late 1800s and 1917. Reference was made to this situation in an article about the "great train wreck" of 1888 when the bodies of the dead were carried to the old wooden depot "which later burned". The present structure was mentioned in a newspaper article dated April 29, 1916, which stated, "Blackshear has been assured of a new brick depot. Representatives from the railroad and the city council have reached an agreement on plans to construct a \$6,000 building at ground level and use the old depot as a freight station." The new depot was built in 1917 by the Savannah, Florida and Western Railway Company who had received a deed to the property in March 1889.

Many people who grew up in Blackshear have fond memories of the activities at the depot. The original scales used to weigh freight remain in place in the warehouse section. Sharecroppers as well as farm owners would bring their produce and watch it being weighed before shipment. People could watch the mail pick-up as the trains came by and retrieved the mail waiting on a hook. Citizens who lived along the railroad tracks remember the steam engines the most--the sound, the smoke, and the smell. A hotel and boarding house were right by the tracks waiting for weary travelers or railroad men who needed a place to stay. Sometimes, families would arrive in Blackshear, bringing all of their possessions with them on the train.

The role of the depot to the town of Blackshear has adapted from being a passenger and freight station to a freight station only to becoming the headquarters for the Pierce County Chamber of Commerce. Passenger service ended in the late 1950s. Freight service was continued until the mid 1970s when the depot was vacated. The City of Blackshear purchased the property from Seaboard Coast Line in 1978, then sold it to the Pierce County Industrial Development Authority.

9. Major Bibliographic References

Bowen, Deborah S. and Michael Jacobs. "Blackshear Depot," Historic Property Information Form, November, 1996. On file at the Historic Preservation Division, Georgia Department of Natural Resources, Atlanta, Georgia.

Broome, Dean. The History of Pierce County, Volume 1. Blackshear, GA: 1973.

Previous documentation on file (NPS): (X) N/A

- preliminary determination of individual listing (36 CFR 67) has been requested
- preliminary determination of individual listing (36 CFR 67) has been issued
date issued:
- previously listed in the National Register
- previously determined eligible by the National Register
- designated a National Historic Landmark
- recorded by Historic American Buildings Survey #
- recorded by Historic American Engineering Record #

Primary location of additional data:

- State historic preservation office
- Other State Agency
- Federal agency
- Local government
- University
- Other, Specify Repository:

Georgia Historic Resources Survey Number (if assigned):

N/A

10. Geographical Data

Acreeage of Property 0.31 acres

UTM References

A) Zone 17 Easting 381870 Northing 3463610

Verbal Boundary Description

The National Register boundary for Blackshear Depot is indicated on the attached tax map with a heavy black line.

Boundary Justification

The boundary includes all of the parcel associated with the depot and owned by the Pierce County Industrial Development Authority.

11. Form Prepared By

State Historic Preservation Office

name/title Gretchen B. Kinnard/National Register Coordinator
organization Historic Preservation Division, Georgia Department of Natural Resources
street & number 500 The Healey Building, 57 Forsyth Street
city or town Atlanta **state** Georgia **zip code** 30303
telephone (404) 656-2840 **date** January 6, 2000

Consulting Services/Technical Assistance (if applicable) () not applicable

name/title Michael Jacobs/Preservation Planner
organization Southeast Georgia Regional Development Center
street and number 3395 Harris Road
city or town Waycross **state** Georgia **zip code** 31503
telephone (912) 285-6097

() **consultant**
(X) **regional development center preservation planner**
() **other:**

(HPD form version 02-24-97)

United States Department of the Interior
National Park Service


**National Register of Historic Places
Continuation Sheet**

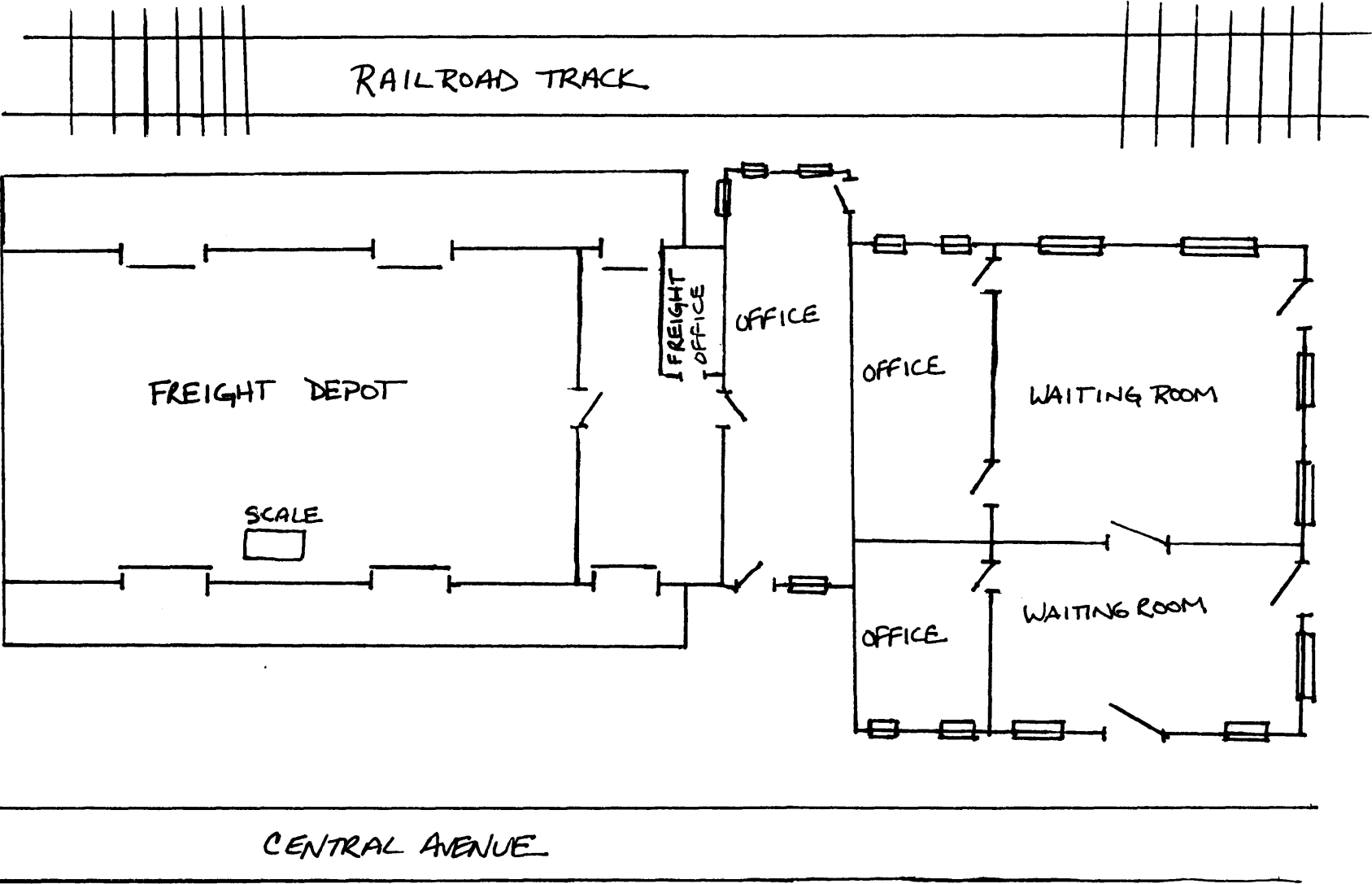
Photographs


Name of Property: Blackshear Depot
City or Vicinity: Blackshear
County: Pierce
State: Georgia
Photographer: James R. Lockhart
Negative Filed: Georgia Department of Natural Resources
Date Photographed: March 1997

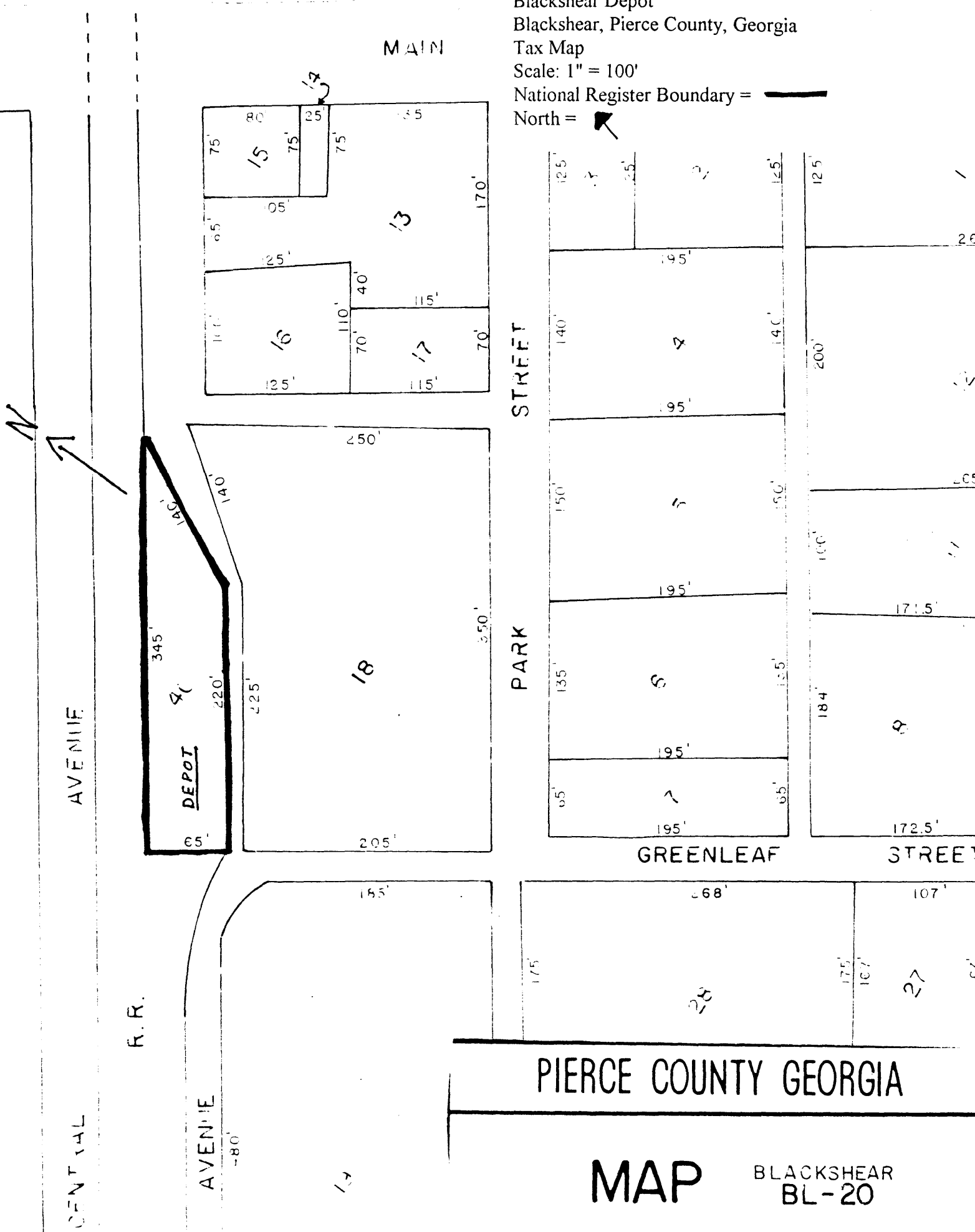
Description of Photograph(s):

- 1 of 11 View of rear facade; photographer facing south.
- 2 of 11 View of rear facade; photographer facing southeast.
- 3 of 11 View of side elevation showing freight platform; photographer facing north.
- 4 of 11 View of side elevations showing passenger entrance; photographer facing northwest.
- 5 of 11 Detail of passenger entrance and roof brackets; photographers facing north.
- 6 of 11 Interior of Chamber of Commerce office, formerly the front passenger waiting room; photographer facing north.
- 7 of 11 Interior of former African-American waiting room; photographer facing northwest.
- 8 of 11 Interior of freight area; photographer facing west.
- 9 of 11 Detail of freight door in freight area; photographer facing south.
- 10 of 11 Detail of freight scales; photographer facing southeast.
- 11 of 11 Interior of freight entrance area; photographer facing north.

Blackshear Depot
Blackshear, Pierce County, Georgia
Schematic Floor Plan
Source: Sponsor
Scale: Not drawn to scale
North = 



Blackshear Depot
 Blackshear, Pierce County, Georgia
 Tax Map
 Scale: 1" = 100'
 National Register Boundary = **—**
 North = 



PIERCE COUNTY GEORGIA

MAP

BLACKSHEAR
 BL-20

DIST. 9th	SCALE 1" = 100'	DATE 1/1/75
-----------	-----------------	-------------