



BA-103

Hampton National Historic Site  
Baltimore County, Maryland  
Sally Sims Stokes  
2003

FRK

SEP. 2003 FRK

SEP. 2003 FRK

SEP. 20

Hampton NHS

View toward Farm Property from Mansion;  
3<sup>RD</sup> floor window

1 of 55



BA-103

Main Entrance Gates - Hampton National Historic  
Site

Baltimore County, Maryland

Sally Sims Stokes

2003

Hampton National Historic Site

Entrance Gates, looking south from Hampton Ln.

2 of 55



BA-103

Main Entrance Gates - Hampton National Historic  
Site

Baltimore County, Maryland

Sally Sims Stokes

2003

SEP\*03FRK9< >324  
862 0539 N N N 3 AB 2(040)

Hampton National Historic Site

Stag's head detail on Entrance Gate's

3 of 55



PA-103

Mansion - Hampton National Historic Site

Baltimore County, Maryland

Sally Sims Stokes

2003

Hampton National Historic Site

Mansion, North elevation, Overall View

4 of 55





BA-103

Mansion - Hampton National Historic Site  
Baltimore County, Maryland

Sally Sims Stokes  
2003

Hampton National Historic Site

North Elevation detail - East Wing & Hyphen

5 of 55



BA - 103

Mansion - Hampton National Historic Site

Baltimore County, Maryland

Sally Sims Stokes

2003

Hampton National Historic Site

North Elevation detail - Central Portico

6 of 55



BA-103

Mansion - Hampton National Historic Site

Baltimore County, Maryland

Sally Sims Stokes

2003

Hampton National Historic Site

North Elevation detail - West Wing & Hyphen

7 of 55



BA-103

Mansion - Hampton National Historic Site

Baltimore County, Maryland

Sally Sims Stokes

2003

Hampton National Historic Site

Mansion, South elevation, overall view

8 of 55





BA-103

Mansion - Hampton National Historic Site  
Baltimore County, Maryland

Sally Sims Stokes  
2003

Hampton NHS

Mansion - South elevation, central portico

9 of 55



BA-103

Pumphouse - Hampton National Historic Site

Baltimore County, Maryland

Sally Sims Stokes

2003

SEP. 2003 FRK

SEP. 2003 FRK

SEP. 2003 FRK

Hampton NHS

Pumphouse, North elevation

10 of 55



BA-103

Domestic Outbuildings - Hampton National Historic  
Site

Baltimore County, Maryland

Sally Sims Stokes

2003

Hampton NHS

Looking east from Mansion - from left to  
right: Paint House, Smokehouse, Privy #1  
& Privy #2

11 of 55



BA-103

Domestic Outbuildings - Hampton National  
Historic Site

Baltimore County, Maryland

Sally Sims Stokes

2003

Hampton NHS

Looking east - from left to right: Paint House,  
Smokehouse

12 of 55





BA - 103

Privy #1 - Hampton National Historic Site

Baltimore County, Maryland

Sally Sims Stokes

2003

Hampton NHS

Privy #1 - North elevation

13 of 55



BA-103

Garage - Hampton National Historic Site

Baltimore County, Maryland

Sally Sims Stokes

2003

Hampton NHS

Garage - West elevation

14 of 55



BA-103

Ice House - Hampton National Historic Site

Baltimore County, Maryland

Sally Sims Stokes

2003

Hampton NHS

looking southeast

15 of 55

SEP 2003 FRK

SEP 2003 FRK

SEP 2003 FRK



BA-103

Ice House - Hampton National Historic Site

Baltimore County, Maryland

Sally Sims Stokes

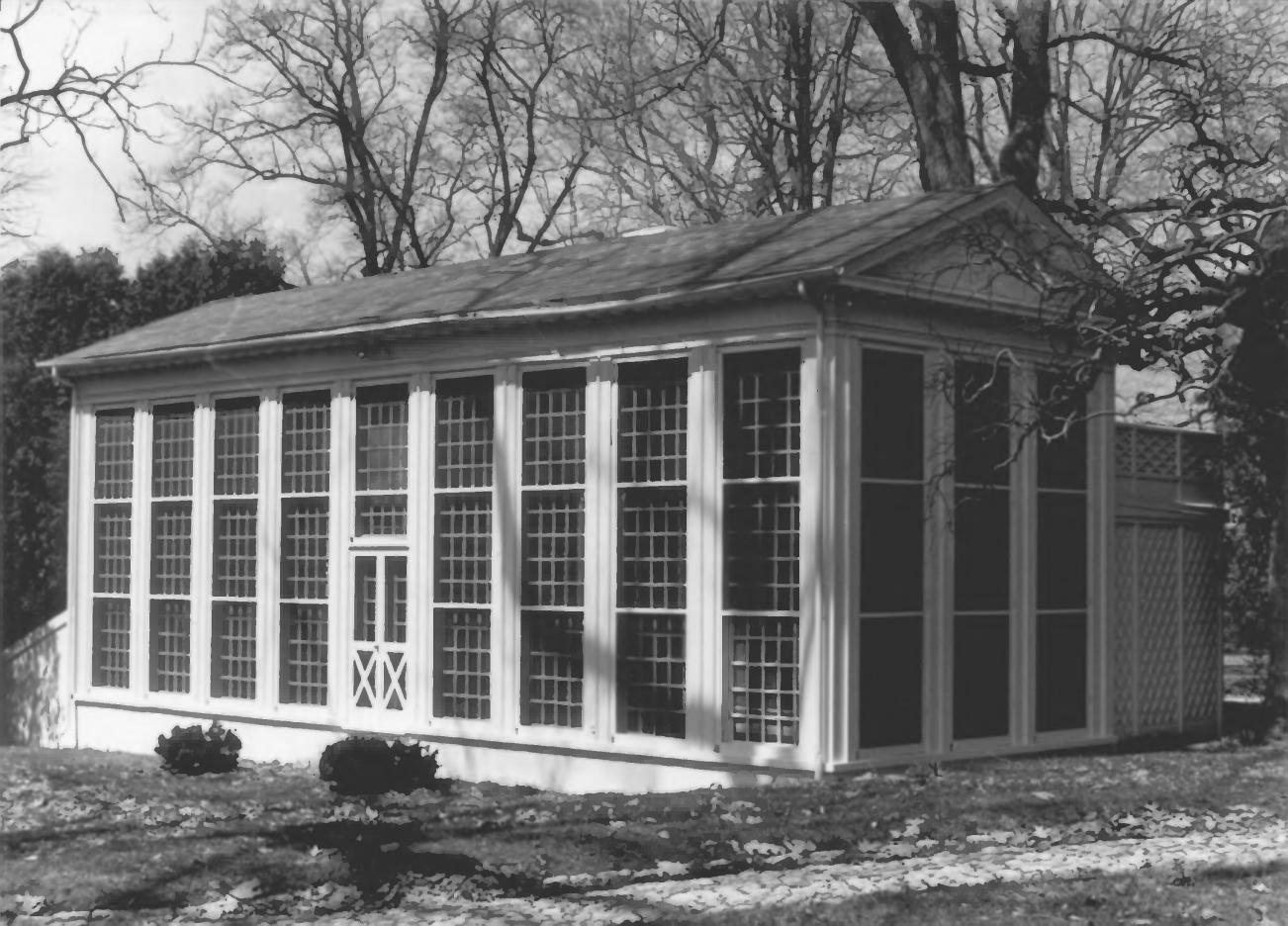
2003

Hampton NHS

detail of northside entry to ice well

16 of 55





BA-103

Orangery - Hampton National Historic Site  
Baltimore County, Maryland

Sally Sims Stokes

2003

Hampton NHS

Orangery - south elevation

17 of 55



BA-103

Orangery-Hampton National Historic Site  
Baltimore County, Maryland  
Sally Sims Stokes  
2003

03 FRK

SEP. 2003 FRK

SEP. 2003 FRK

Hampton NHS

Orangery-north elevation

18 of 55



BA-103

Brick Terrace - Hampton National Historic Site

Baltimore County, Maryland

Sally Sims Stokes

2003

Hampton National Historic Site

Brick terrace - south of Mansion; looking east

19 of 55



BA-103

Great Terrace - Hampton National Historic Site

Baltimore County, Maryland

Sally Sims Stokes

2003

Hampton National Historic Site

SEP. 2003 FRK

Great Terrace - view from cupola; Parterres #1,

3 & 5

20 of 55





PA-103

Formal Garden Path - Hampton National Historic  
Site

Baltimore County, Maryland

Sally Sims Stokes

2003

Hampton National Historic Site

Looking west; Great Terrace on right; First  
Terrace on left

21 of 55



PA-103

Terraced Gardens - Hampton National Historic  
Site

Baltimore County, Maryland

Sally Sims Stokes

2003

Hampton NHS

looking southeast - Parterre 2; Parterre 1 off  
to left; Parterre 3 in background

22 of 55



PA-103

Formal Garden Path - Hampton National Historic  
Site

Baltimore County, Maryland

Sally Sims Stokes

2003

SEP\*03FRK9< >263  
061 0539 N N N C 27 2(040)

Hampton NHS

Looking west, First Terrace on right; Second  
Terrace on left.

23 of 55



BA-103

Terraced Gardens - Hampton National Historic  
Site

Baltimore County, Maryland

Sally Sims Stokes

2003

Hampton NHS

looking south - Parterre 3

24 of 55





BA-103

Terraced Gardens Hampton National Historic  
Site

Baltimore County, Maryland

Sally Sims Stokes

2003

Hampton NHS

looking southwest - Parterre 4

25 of 55



PA-103

Terraced Gardens - Hampton National Historic  
Site

Baltimore County, Maryland

Sally Sims Stokes

2003

Hampton NHS

Looking north toward Mansion from  
Third Terrace

24 of 55



BA-103

North Lawn-Hampton National Historic Site

Baltimore County, Maryland

Sally Sims Stokes

2003

Hampton NHS

View of North Lawn area looking south from

Farm property

27 of 55



BA-103

Stables-Hampton National Historic Site

Baltimore County, Maryland

Sally Sims Stokes

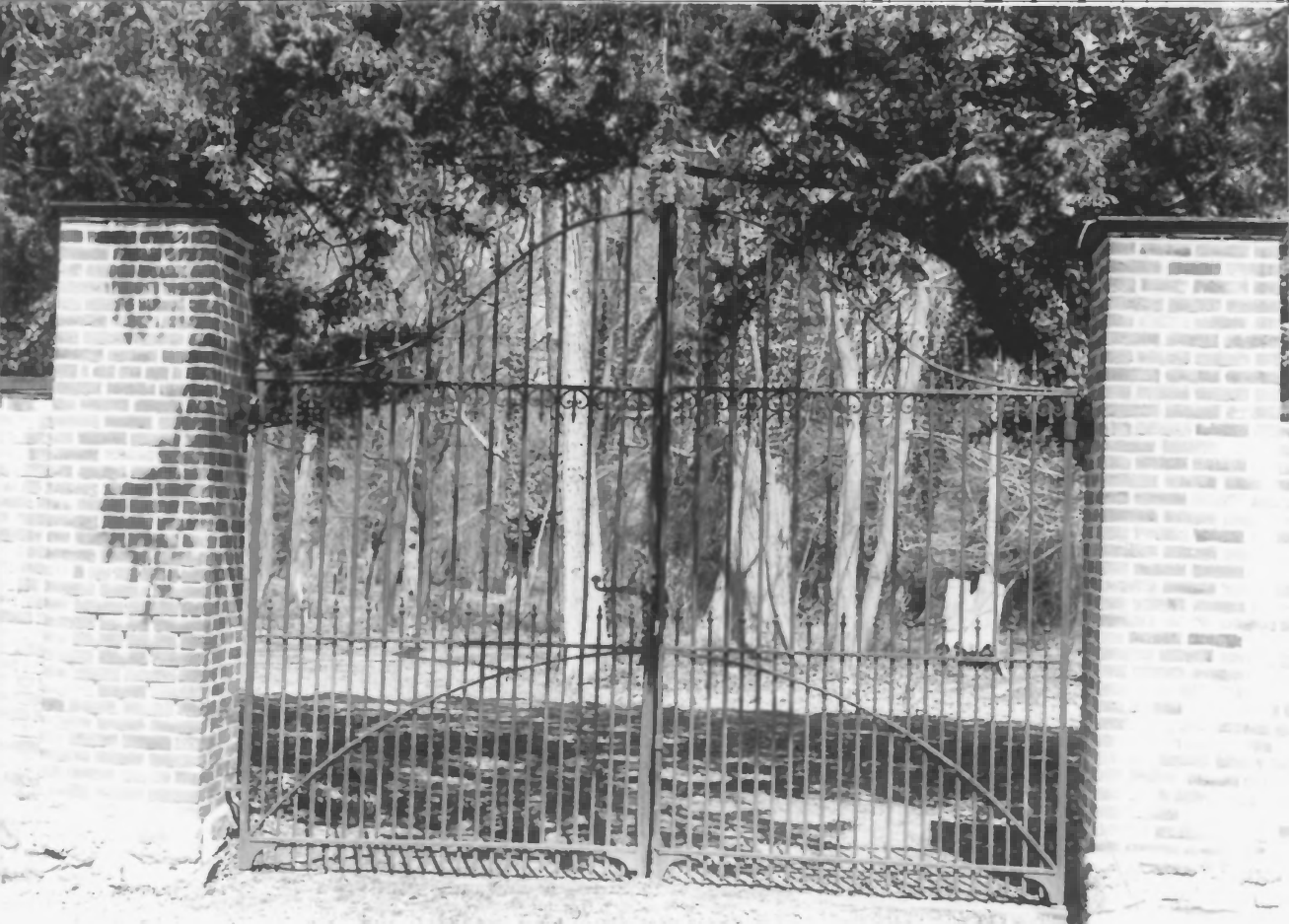
2003

Hampton NHS

looking northeast - Stable #1 in foreground,  
Stable #2 behind

28 of 55





BA-103

Cemetery Wall & Gate - Hampton National Historic  
Site

Baltimore County, Maryland

Sally Sims Stokes

2003

Hampton NHS

looking south at gate

29 of 55



BA-103

Ridgely Family Vault - Hampton National Historic  
Site

Baltimore County, Maryland

Sally Sims Stokes

2003

SEP. 2003 FRK

SEP. 2003 FRK

SEP. 2003 FRK

Hampton NHS

Vault - north elevation

30 of 55



BA-103

Ridgely Family Vault - Hampton National Historic  
Site

Baltimore County, Maryland

Sally Simms Stokes

2003

Hampton NHTS

Vault - south elevation

31 of 55



BA-103

Ridgely Family Cemetery - Hampton National  
Historic Site

Baltimore County, Maryland

Sally Sims Stokes

2003

Hampton NHS

looking west

32 of 55

SEP. 2003 FRK





BA-103

Ridgely Family Cemetery - Hampton National  
Historic Site

Baltimore County, Maryland

Sally Sims Stokes

2003

SEP. 2003 FRK

SEP. 2003 FRK

SEP. 2003 FRK

Hampton NHS

looking east

33 of 55



BA-103

Garden Maintenance Building - Hampton  
National Historic Site

Baltimore County, Maryland

Sally Sims Stokes

2003

Hampton NHS

Garden Maintenance Building - west elevation

34 of 55



BA-103

Garden Maintenance Building - Hampton

National Historic Site

Baltimore County, Maryland

Sally Sims Stokes

2003

Hampton NHS

East elevation

35 of 55



BA-103

Cold Frame Foundations - Hampton National  
Historic Site

Baltimore County, Maryland

Sally Sims Stokes

2003

Hampton NHS

looking north; Greenhouses in  
background

36 of 55

03FRK9 >33  
0539 N N B 20 2(040)





BA-103

Greenhouse #2 - Hampton National Historic Site

Baltimore County, Maryland

Sally Sims Stokes

2003

Hampton NHS

SEP\*03FRK9< >313  
862 0539 N N N C 32 2(040)

South elevation

37 of 55



BA-103

South Spring Ruin - Hampton National Historic  
Site

Baltimore County, Maryland

Sally Sims Stokes

2003

SEP\*03FRK9< >267  
861 0539 N N N C 03 2(040)

Hampton NHTS  
looking south  
38 of 55



BA-103

Farm House - Hampton National Historic Site  
Baltimore County, Maryland

Sally Sims Stokes

2003

Hampton NHS  
West elevation

39 of 55



BA-103

Farm House - Hampton National Historic Site

Baltimore County, Maryland

Sally Sims Stokes

2003

Hampton NHS

South elevation

40 of 55

2 0539 N N 4 28 2 (040)

\*03FRK9 > 304





BA-103

Farmhouse Cluster - Hampton National Historic  
Site

Baltimore County, Maryland

Sally Sims Stokes

2003

Hampton NHS

looking southeast - left to right: Slave Quarters 2

Ash House, Log Farm Structure, Farmhouse

41 of 55





Something went wrong while we were encoding this page.  
Please check the log file to find out the details.



BA-103

Slave Quarters - Hampton National Historic  
Site

Baltimore County, Maryland

Sally Sims Stokes

2003

Hampton NHS

Slave Quarters 3 in foreground; Slave Quarters 2  
in background; looking north

43 of 55



BA-103

Slave Quarters 2 - Hampton National Historic  
Site

Baltimore County, Maryland

Sally Sims Stokes

2003

Hampton NHTS

South Elevation

44 of 55





BA-103

Log Farm Structure - Hampton National Historic  
Site

Baltimore County, Maryland

Sally Simis Stokes

2003

Hampton NHS

South Elevation

45 of 55



BA-103

Ash House - Hampton National Historic Site

Baltimore County, Maryland

Sally Sims Stokes

2003

Hampton NHS

FRK

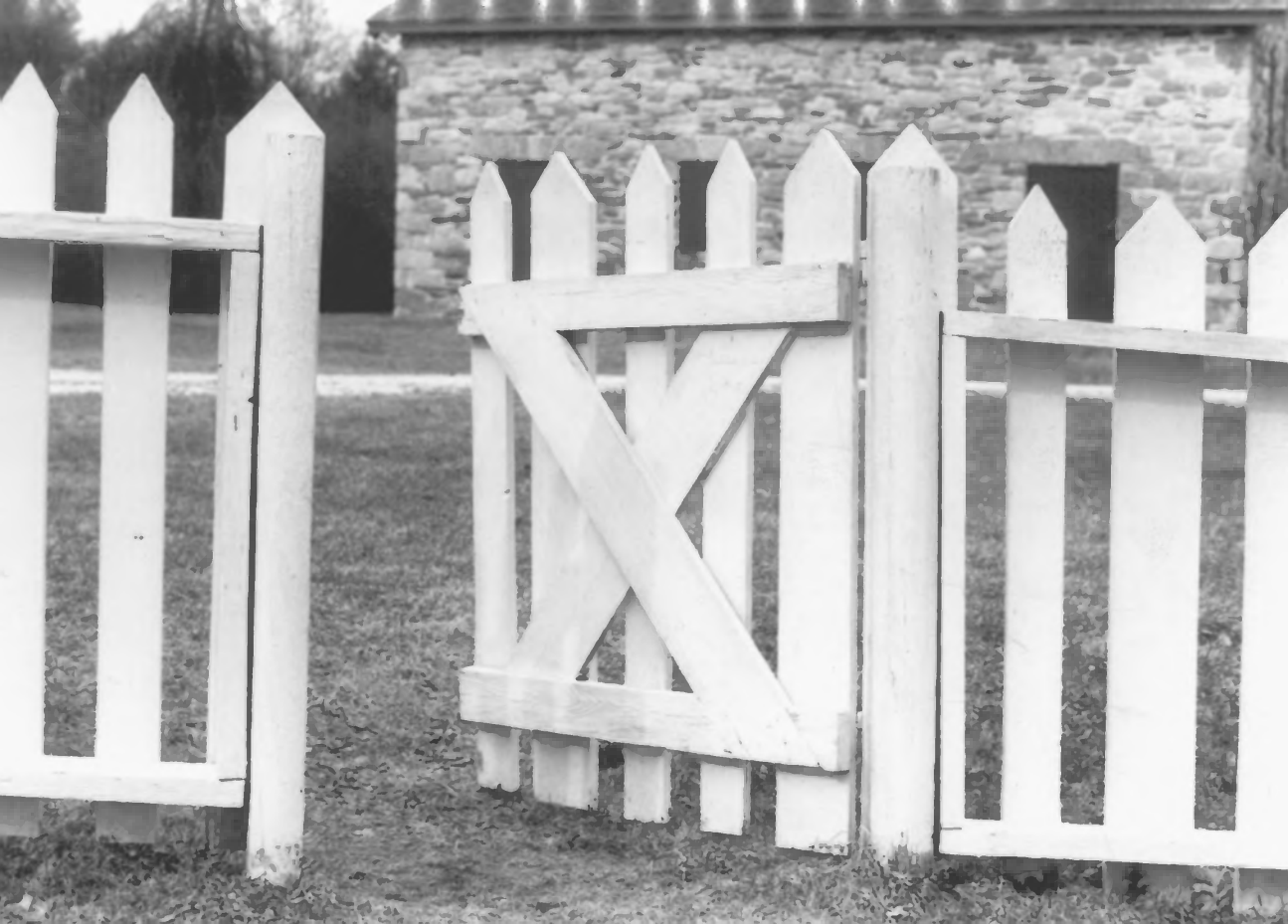
SEP. 2003 FRK

SEP. 2003 FRK

SEP

looking northeast

46 of 55



BA-103

Farm House Fence - Hampton National Historic  
Site

Baltimore County, Maryland

Sally Sims Stokes

2003

Hampton NHTS

detail of gate; Mule Barn in background

47 of 55



BA-103

Dairy - Hampton National Historic Site  
Baltimore County, Maryland

Sally Sims Stokes

2003

Hampton NHS

looking north

48 of 55





BA-103

Dairy-Hampton National Historic Site  
Baltimore County, Maryland

Sally Sims Stokes

2003

Hampton NHS

Sterilizing oven detail

49 of 55



BA-103

Long House Granary - Hampton National Historic  
Site

Baltimore County, Maryland

Sally Sims Stokes

2003

Hampton NHS

South elevation

SO of SS



BA-103

Mule Barn-Hampton National Historic Site

Baltimore County, Maryland

Sally Sims Stokes

2003

Hampton NHS

South Elevation

51 of 55



BA-103

North Garage - Hampton National Historic Site

Baltimore County, Maryland

Sally Sims Stokes

2003

Hampton NHS

South Elevation (main)

52 of 55





BA-103

Corn Crib Foundation - Hampton National  
Historic Site

Baltimore County, Maryland

Sally Sims Stokes

2003

SEP\*03FRK9< >289  
861 0539 N N N C 30 2(040)

Hampton NHS

looking southwest

53 of 55



BA-103

Ridgely Field Fence - Hampton National  
Historic Site

Baltimore County, Maryland

Sally Sims Stokes

2003

Hampton NTHS

Detail, North Garage in background

54 of 55



BA-103

Caretaker's House - Hampton National  
Historic Site

Baltimore County, Maryland

Sally Sims Stokes

2003

Hampton NHS

Main elevation; looking southeast

55 of 55