

1800

United States Department of the Interior National Park Service

National Register of Historic Places Registration Form

This form is for use in nominating or requesting determinations of eligibility for individual properties or districts. See instructions in Guidelines for Completing National Register Forms (National Register Bulletin 16). Complete each item by marking "x" in the appropriate box or by entering the requested information. If an item does not apply to the property being documented, enter "N/A" for "not applicable." For functions, styles, materials, and areas of significance, enter only the categories and subcategories listed in the instructions. For additional space use continuation sheets (Form 10-900a). Type all entries.

1. Name of Property

historic name Krebs, James House
other names/site number Thomas Harold A. House

2. Location

street & number 4702 River Road
city, town Pascagoula
state Mississippi code MS county Jackson code 59 zip code 39567

3. Classification

Table with 3 columns: Ownership of Property, Category of Property, Number of Resources within Property. Includes checkboxes for private/public ownership and building/site/structure/object categories.

Name of related multiple property listing: Historic Resources of Pascagoula, MS

Number of contributing resources previously listed in the National Register 0

4. State/Federal Agency Certification

As the designated authority under the National Historic Preservation Act of 1966, as amended, I hereby certify that this nomination request for determination of eligibility meets the documentation standards for registering properties in the National Register of Historic Places and meets the procedural and professional requirements set forth in 36 CFR Part 60. In my opinion, the property meets does not meet the National Register criteria. See continuation sheet. Signature of certifying official: Kenneth A. P. Pool, Deputy State Historic Preservation Officer, Date: Oct. 24, 1991

In my opinion, the property meets does not meet the National Register criteria. See continuation sheet. Signature of commenting or other official: State or Federal agency and bureau

5. National Park Service Certification

I, hereby, certify that this property is: entered in the National Register. determined eligible for the National Register. determined not eligible for the National Register. removed from the National Register. other, (explain:). Entered in the National Register. Signature of the Keeper: Gump M. Rapsky, Date of Action: 12/20/91

6. Function or Use

Historic Functions (enter categories from instructions)
Domestic/Single Dwelling

Current Functions (enter categories from instructions)
Domestic/Single Dwelling

7. Description

Architectural Classification
(enter categories from instructions)Late Victorian

Materials (enter categories from instructions)

foundation brick
walls weatherboards

roof metal
other N/A

Describe present and historic physical appearance.

The James Krebs house is situated on a generous, irregular-shaped lot, facing west. The site is wooded with many large trees, mostly oaks draped with Spanish moss. The house, which rests on concrete conical piers, is situated along the north side of the property, with a large barn towards the south side.

The house is basically a center-hall cottage, with appendages to the south and east. The gabled roof is clad in corrugated metal, and is very steep. The front porch is full-width of the house's main mass, but does not extend across the southern appendage. The porch is independently roofed, supported on turned wood columns, and has a wood deck and stairs. The entrance is flanked on each side by six-over-six double-hung windows. The southern appendage is set flush with the main cottage mass on the west elevation, and has two six-over-six double-hung windows. The south end of the appendage has a three-sided bay, with a six-over-six double-hung window in each face. Across the east side of this southern appendage is a screen-enclosed porch, undercut from the appendage's gable roof. It is about six feet shorter than the main mass of the cottage. To the east of the main cottage mass is an L-shaped wing with a porch undercut from the main roof; in the "L" of the wing is a well. Down the north side of the house are two six-over-six double-hung windows on each side of a door.

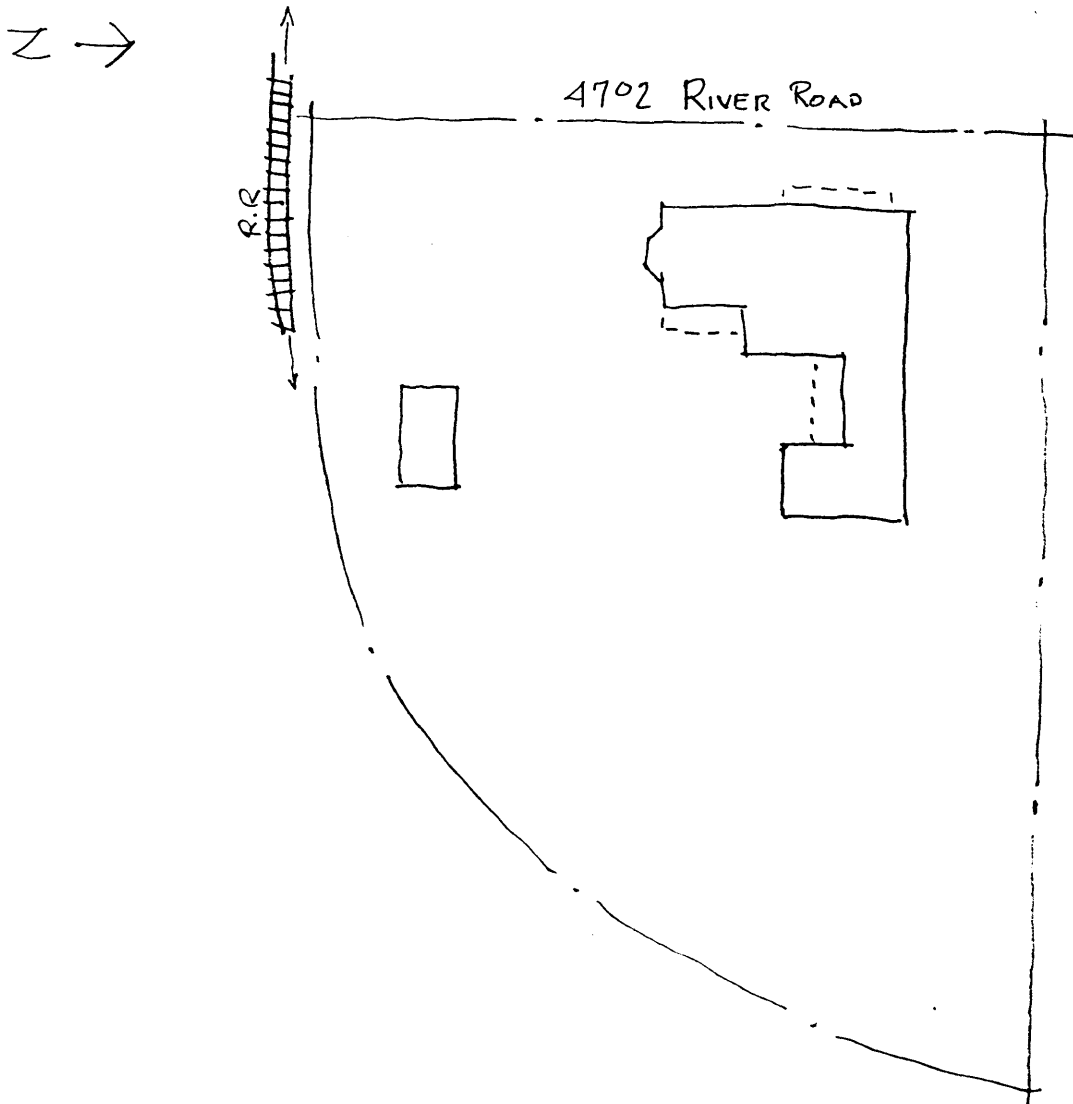
As originally built, this was a four-room cottage with an exceptionally narrow center hall. The walls and ceilings are matched and beaded boards. Doors have four raised panels and flat board casing. The southwest room contains a simple wood mantel. The south and east additions were built in 1905, allegedly from a dismantled boat. The south wing is presently a bedroom. The east L-wing contains the dining room and kitchen. The simplicity of details may be explained by the oral tradition that this was originally a store.

There is on the site a large board-and-batten structure with a gable roof on the site. It was reportedly used as a foundry for gears.

United States Department of the Interior
National Park Service

National Register of Historic Places Continuation Sheet

Section number 7 Page 2



8. Statement of Significance

Certifying official has considered the significance of this property in relation to other properties:

nationally statewide locally

Applicable National Register Criteria A B C D

Criteria Considerations (Exceptions) N/A A B C D E F G

Areas of Significance (enter categories from instructions)

Architecture

Period of Significance

1905

Significant Dates

1905

Cultural Affiliation

N/A

Significant Person

N/A

Architect/Builder

Unknown

State significance of property, and justify criteria, criteria considerations, and areas and periods of significance noted above.

The James Krebs house is significant architecturally within the context of Pascagoula's residential elements. Its setting, house type, and architectural style reflect the Golden Age of Pascagoula's lumber boom (1870-1910).

The Krebs family is one of Pascagoula's oldest, having located on Krebs Lake in the early 1700s. They were involved in shipbuilding very early, and continue that tradition today. The numerous members of the Krebs family who lived in this area resulted in its being known as Krebsville (see cover nomination). This cottage was built by James and Helen Krebs prior to 1905, when it was sold to J. Terreson. It remained in the Terreson family until 1975, when Harold Thomas purchased it.

The center-hall cottage is significant as a good example of a prevalent Pascagoula house type, demonstrating its longevity into the twentieth century (see cover nomination). It is unusual in its rambling appearance, with many appendages, rendering a quaint and picturesque appearance, and typifies the middle-class houses of Krebsville. Its vernacular Queen Anne detailing was popular during this period, and represents its early twentieth century construction.

The independently roofed front porch provides a shaded area from which to view Lake Krebs. The rear porches allow for summer sleeping on hot nights and, combined with the frontporch, keep the interior spaces cool.

There is a large board-and-batten barn on the site, one of only a few surviving in Pascagoula. The combination of the cottage--little changed since its construction--the barn, and the treed property provides a visible link to Pascagoula's Golden Age.

9. Major Bibliographical References

For Bibliography See Context Statement.

Previous documentation on file (NPS):

- preliminary determination of individual listing (36 CFR 67) has been requested
- previously listed in the National Register
- previously determined eligible by the National Register
- designated a National Historic Landmark
- recorded by Historic American Buildings Survey # _____
- recorded by Historic American Engineering Record # _____

N/A See continuation sheet

Primary location of additional data:

- State historic preservation office
- Other State agency
- Federal agency
- Local government
- University
- Other

Specify repository: _____

10. Geographical Data

Acreage of property Less than one acre.

UTM References

A

| | |
|---|---|
| 1 | 6 |
|---|---|

| | | | | | |
|---|---|---|---|---|---|
| 3 | 3 | 1 | 5 | 7 | 5 |
|---|---|---|---|---|---|

| | | | | | | |
|---|---|---|---|---|---|---|
| 3 | 3 | 6 | 1 | 7 | 7 | 5 |
|---|---|---|---|---|---|---|

Zone Easting Northing

B

| | |
|--|--|
| | |
|--|--|

| | | | | | |
|--|--|--|--|--|--|
| | | | | | |
|--|--|--|--|--|--|

| | | | | | | |
|--|--|--|--|--|--|--|
| | | | | | | |
|--|--|--|--|--|--|--|

Zone Easting Northing

C

| | |
|--|--|
| | |
|--|--|

| | | | | | |
|--|--|--|--|--|--|
| | | | | | |
|--|--|--|--|--|--|

| | | | | | | |
|--|--|--|--|--|--|--|
| | | | | | | |
|--|--|--|--|--|--|--|

D

| | |
|--|--|
| | |
|--|--|

| | | | | | |
|--|--|--|--|--|--|
| | | | | | |
|--|--|--|--|--|--|

| | | | | | | |
|--|--|--|--|--|--|--|
| | | | | | | |
|--|--|--|--|--|--|--|

N/A See continuation sheet

Verbal Boundary Description

Tract on River Road adjacent ME RR (339' on River Road x 510' on Catalapa).

N/A See continuation sheet

Boundary Justification

The boundary includes the entire city lot that has historically been associated with the property.

N/A See continuation sheet

11. Form Prepared By

name/title Robert J. Cangelosi, Jr., Architect

organization Koch and Wilson Architects, A Prof. Corp. date 3 June 1991

street & number 1100 Jackson Avenue telephone 504/581-7023

city or town New Orleans state LA zip code 70130