

United States Department of the Interior
National Park Service

JUN 05 1989

National Register of Historic Places
Continuation Sheet

NATIONAL
REGISTER

Half-Way House and Toll House Site BA-62
Baltimore County, Maryland
1989 boundary expansion

Section number 7 Page A

GENERAL DESCRIPTION:

On the east side of York Road stand a bank-barn and the foundations of five ancillary buildings erected in connection with the inn. These all appear to be contemporary with the date of the inn. The barn, measuring 35'x 55', stands on the southeast intersection of York and Weisburg roads. It is of frame construction resting on a rubble stone foundation and has a gable roof. The interior has stalls with feed troughs on the lower level. On the upper or road level is the main floor area accessed by a large sliding door. There is space here for storage of hay, equipment, and vehicles. All the wooden parts are handhewn of oak and chestnut. The barn dates to 1810-1811.

The foundations are all of rubble stone and were laid for a blacksmith shop, a wagon shed, stable, granary, and corn crib. A reconstructed frame wagon shed now stands upon the foundations of the original wagon shed. The land about these foundations is flat and now used as a horse pasture.

To the north of the inn along the west side of York Road stood the tall house built for the turnpike about 1810. Although the turnpike company owned this site until about 1913, the building apparently was demolished in the nineteenth century. Details about dimensions and building materials for the toll house are not known.

Contributing and non-contributing resources for this property are determined by association with the inn use of the property.

- contributing: 12
 - 4 buildings - house/inn
 - dairy/springhouse
 - laundry/wash house
 - barn
 - 2 structures - well
 - shed/ice house
 - 6 sites - toll house
 - blacksmith shop
 - wagon shed
 - stable
 - granary
 - corn crib

- non-contributing:
 - 2 buildings - shop
 - wagon shed

**United States Department of the Interior
National Park Service**

JUN 5 1989

**National Register of Historic Places
Continuation Sheet**

Half-Way House and Toll House Site BA-62
Baltimore County, Maryland
1989 boundary expansion

Section number 8 Page A

HISTORY:

Adding to the historic significance of Half-Way House, also called Weisburg Inn and Wiseburg Inn, are the compliment of ancillary buildings and remains that stand to the east across York Road. These include a blacksmith shop, wagon shed, stable, granary, corn crib, and barn. Unfortunately, only the barn still stands although the foundations of the other buildings and structures remain. This area constitutes a major service area associated with travel along the turnpike and gives a relatively rare glimpse of an inn and its yards from the first quarter of the nineteenth century.

Included in the nomination also is the site of a toll house built about 1810 for the turnpike. Although the building was demolished many years ago, the site has remained intact and provides an opportunity for studying the physical nature of the house as well as life in it.

United States Department of the Interior
National Park Service

JUN 5 1989

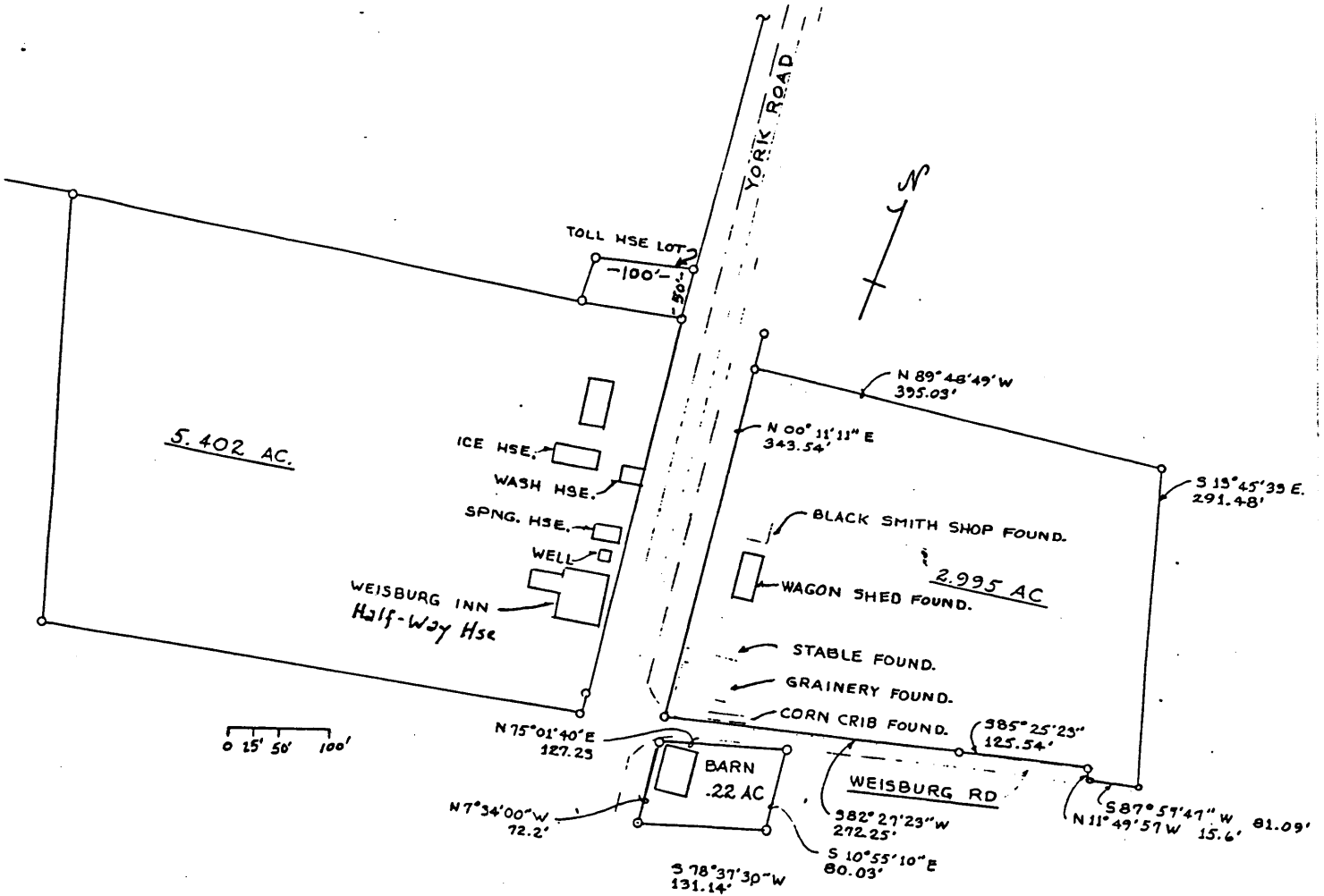
National Register of Historic Places
Continuation Sheet

Half-Way House and Toll House Site
Baltimore County, Maryland
1989 boundary expansion

BA-62

Section number 10 Page A

boundaries and resource sketch map
1989



United States Department of the Interior
National Park Service

JUN 5 1989

National Register of Historic Places Continuation Sheet

Half-Way House and Toll House Site
Baltimore County, Maryland
1989 boundary expansion

BA-62

Section number 10 Page B

GEOGRAPHICAL DATA:

approximate acreage: 9

Hereford, MD quad

UTM 18/357530/4387010

Boundary Description: See Continuation Sheet No. 10.A

Boundary Justification: These expanded boundaries were drawn to include all of the resources related to Half-Way House, also called Weisburg Inn and Wiseburg Inn, and its original use as an inn along the York Turnpike and to exclude the surrounding tilled acreage that does not include resources.