



THE McLEMORE-SHARPE FARMSTEAD

Vidalia vicinity, Toombs County, Georgia

Photographer: James R. Lockhart

Negatives Filed: Georgia Department of
Natural Resources

Date: August, 1981

Description (1 of 20): Front facade and east
side of McLemore Log House; photographer
facing southwest.



THE McLEMORE-SHARPE FARMSTEAD

Vidalia vicinity, Toombs County, Georgia

Photographer: James R. Lockhart

Negatives Filed: Georgia Department of
Natural Resources

Date: August, 1981

Description (2 of 20): North and east sides
of McLemore Log House kitchen building;
photographer facing southwest.



THE McLEMORE-SHARPE FARMSTEAD

Vidalia vicinity, Toombs County, Georgia

Photographer: James R. Lockhart

Negatives Filed: Georgia Department of
Natural Resources

Date: August, 1981

Description (3 of 20): Interior of living room
McLemore Log House; photographer facing
northeast.



THE McLEMORE-SHARPE FARMSTEAD

Vidalia vicinity, Toombs County, Georgia

Photographer: James R. Lockhart

Negatives Filed: Georgia Department of
Natural Resources

Date: August, 1981

Description (4 of 20): Stairway in living
room, McLemore Log House; photographer facing
west.



THE McLEMORE-SHARPE FARMSTEAD

Vidalia vicinity, Toombs County, Georgia

Photographer: James R. Lockhart

Negatives Filed: Georgia Department of
Natural Resources

Date: August, 1981

Description (5 of 20): Upstairs loft, Mc-
Lemore Log House; photographer facing
southwest.



THE McLEMORE-SHARPE FARMSTEAD

Vidalia vicinity, Toombs County, Georgia

Photographer: James R. Lockhart

Negatives Filed: Georgia Department of
Natural Resources

Date: August, 1981

Description (6 of 20): Kitchen building,
McLemore Log House; photographer facing
east.



THE McLEMORE-SHARPE FARMSTEAD

Vidalia vicinity, Toombs County, Georgia

Photographer: James R. Lockhart

Negatives Filed: Georgia Department of
Natural Resources

Date: August, 1981

Description (7 of 20): Syrup house behind
McLemore Log House; photographer facing
northwest.



THE McLEMORE-SHARPE FARMSTEAD

Vidalia vicinity, Toombs County, Georgia

Photographer: James R. Lockhart

Negatives Filed: Georgia Department of
Natural Resources

Date: August, 1981

Description (8 of 20): Front and south side
of Sharpe House; photographer facing
northwest.



THE McLEMORE-SHARPE FARMSTEAD

Vidalia vicinity, Toombs County, Georgia

Photographer: James R. Lockhart

Negatives Filed: Georgia Department of
Natural Resources

Date: August, 1981

Description (9 of 20): North side of Sharpe
House; photographer facing southeast.



THE McLEMORE-SHARPE FARMSTEAD

Vidalia vicinity, Toombs County, Georgia

Photographer: James R. Lockhart

Negatives Filed: Georgia Department of
Natural Resources

Date: August, 1981

Description (10 of 20): Rear of Sharpe
House and smokehouse; photographer
facing southeast.



THE McLEMORE-SHARPE FARMSTEAD

Vidalia vicinity, Toombs County, Georgia

Photographer: James R. Lockhart

Negatives Filed: Georgia Department of
Natural Resources

Date: August, 1981

Description (11 of 20): Central hall of
Sharpe House; photographer facing east.



THE McLEMORE-SHARPE FARMSTEAD

Vidalia vicinity, Toombs County, Georgia

Photographer: James R. Lockhart

Negatives Filed: Georgia Department of
Natural Resources

Date: August, 1981

Description (12 of 20): Parlor of Sharpe
House; photographer facing northwest.



THE McLEMORE-SHARPE FARMSTEAD

Vidalia vicinity, Toombs County, Georgia

Photographer: James R. Lockhart

Negatives Filed: Georgia Department of
Natural Resources

Date: August, 1981

Description (13 of 20): Southwest bedroom
of Sharpe House; photographer facing
northeast.



THE McLEMORE-SHARPE FARMSTEAD

Vidalia vicinity, Toombs County, Georgia

Photographer: James R. Lockhart

Negatives Filed: Georgia Department of
Natural Resources

Date: August, 1981

Description (14 of 20): Dining room of
Sharpe House; photographer facing west.



THE McLEMORE-SHARPE FARMSTEAD

Vidalia vicinity, Toombs County, Georgia

Photographer: James R. Lockhart

Negatives Filed: Georgia Department of
Natural Resources

Date: August, 1981

Description (15 of 20): Yard to west of
Sharpe House showing, from left to right,
chicken house, double barn, well house and
wash house; photographer facing northwest.



THE McLEMORE-SHARPE FARMSTEAD

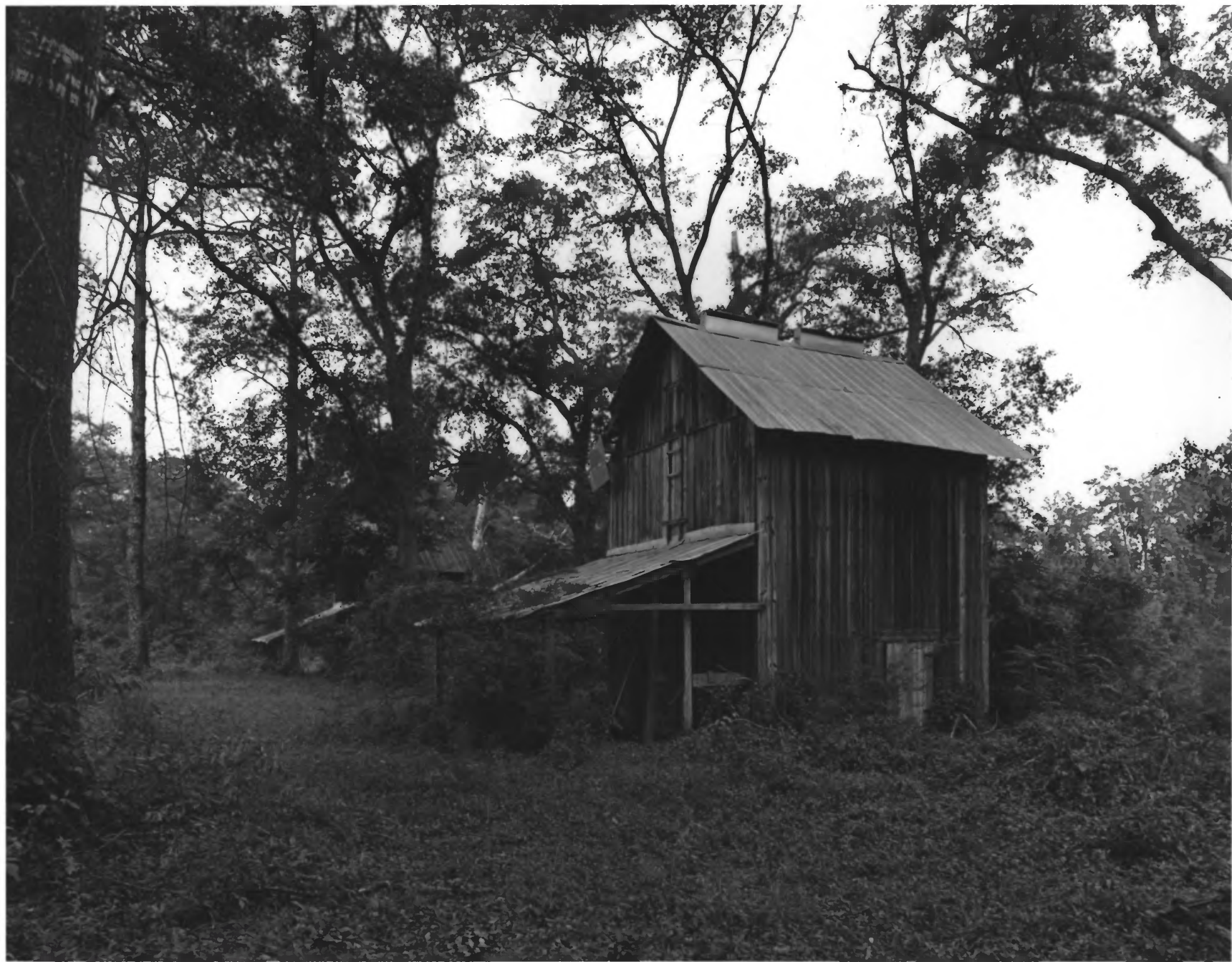
Vidalia vicinity, Toombs County, Georgia

Photographer: James R. Lockhart

Negatives Filed: Georgia Department of
Natural Resources

Date: August, 1981

Description (16 of 20): Commissary; photo-
grapher facing northwest.



THE McLEMORE-SHARPE FARMSTEAD

Vidalia vicinity, Toombs County, Georgia

Photographer: James R. Lockhart

Negatives Filed: Georgia Department of
Natural Resources

Date: August, 1981

Description (17 of 20): Tobacco barns;
photographer facing northwest.



THE McLEMORE-SHARPE FARMSTEAD

Vidalia vicinity, Toombs County, Georgia

Photographer: James R. Lockhart

Negatives Filed: Georgia Department of
Natural Resources

Date: August, 1981

Description (18 of 20): Sugar shelter,
with engine house in rear; photographer
facing northwest.



THE McLEMORE-SHARPE FARMSTEAD

Vidalia vicinity, Toombs County, Georgia

Photographer: James R. Lockhart

Negatives Filed: Georgia Department of
Natural Resources

Date: August, 1981

Description (19 of 20): Tenant house;
photographer facing northeast.



THE McLEMORE-SHARPE FARMSTEAD

Vidalia vicinity, Toombs County, Georgia

Photographer: James R. Lockhart

Negatives Filed: Georgia Department of
Natural Resources

Date: August, 1981

Description (20 of 20): Family cemetery;
photographer facing northeast.