

United States Department of the Interior
National Park ServiceNational Register of Historic Places
Registration Form429
RECEIVED
FEB 12 1990NATIONAL
REGISTER

This form is for use in nominating or requesting determinations of eligibility for individual properties or districts. See instructions in *Guidelines for Completing National Register Forms* (National Register Bulletin 16). Complete each item by marking "x" in the appropriate box or by entering the requested information. If an item does not apply to the property being documented, enter "N/A" for "not applicable." For functions, styles, materials, and areas of significance, enter only the categories and subcategories listed in the instructions. For additional space use continuation sheets (Form 10-900a). Type all entries.

1. Name of Property

historic name W.H. Moore Houseother names/site number Dogwood Manor

2. Location

street & number 906 Malvern Street☐ not for publication N/Acity, town Hot Springs☐ vicinity N/Astate Arkansascode ARcounty Garlandcode AR 051zip code 71901

3. Classification

Ownership of Property

- ☒ private
☐ public-local
☐ public-State
☐ public-Federal

Category of Property

- ☒ building(s)
☐ district
☐ site
☐ structure
☐ object

Number of Resources within Property

Contributing	Noncontributing
<u>1</u>	<u> </u> buildings
<u> </u>	<u> </u> sites
<u> </u>	<u> </u> structures
<u> </u>	<u> </u> objects
<u>1</u>	<u> </u> Total

Name of related multiple property listing:

N/ANumber of contributing resources previously
listed in the National Register N/A

4. State/Federal Agency Certification

As the designated authority under the National Historic Preservation Act of 1966, as amended, I hereby certify that this
☒ nomination ☐ request for determination of eligibility meets the documentation standards for registering properties in the
National Register of Historic Places and meets the procedural and professional requirements set forth in 36 CFR Part 60.
In my opinion, the property ☒ meets ☐ does not meet the National Register criteria. ☐ See continuation sheet.

Signature of certifying official

Date

Arkansas Historic Preservation Program

State or Federal agency and bureau

In my opinion, the property ☐ meets ☐ does not meet the National Register criteria. ☐ See continuation sheet.

Signature of commenting or other official

Date

State or Federal agency and bureau

5. National Park Service Certification

I, hereby, certify that this property is:

- ☒ entered in the National Register.
☐ See continuation sheet.
☐ determined eligible for the National
Register. ☐ See continuation sheet.
☐ determined not eligible for the
National Register.

☐ removed from the National Register.☐ other, (explain:)

Signature of the Keeper

Date of Action

6. Function or Use

Historic Functions (enter categories from instructions)

DOMESTIC/Single dwelling

Current Functions (enter categories from instructions)

DOMESTIC/hotel**7. Description**

Architectural Classification

(enter categories from instructions)

OTHER/Queen Anne Revival-Colonial
Revival Transitional

Materials (enter categories from instructions)

foundation Brickwalls Wood/weatherboardroof Asphalt

other _____

Describe present and historic physical appearance.

☒ See continuation sheet

United States Department of the Interior
National Park Service

National Register of Historic Places
Continuation Sheet

Section number 7 Page 1

Summary

The W.H. Moore House is a two-and-one-half story, wood frame residence designed in an unusual synthesis of the Queen Anne Revival and the Colonial Revival. It features an irregular plan, including such elements a semi-circular corner porch, a polygonal corner bay, and a variety of gable-roof components.

Elaboration

The W.H. Moore House is a two-and-one-half story, wood frame residence constructed almost entirely with cypress. It is designed in a rather unusual interpretation of what has become known as the Transitional style: a blending of the Queen Anne Revival with the Colonial Revival. The plan is asymmetrical, with a variety of flat roof, gable roof, and shed roof elements projecting at different angles, although a hipped roof covers the main body of the house. A single brick chimney rises through the eastern slope of the roof. The roof is covered with composition shingles, the walls are sheathed in weatherboard, and the house is supported on a continuous brick foundation. There is a partial basement beneath the rear of the house.

The northern or front elevation is composed of a full-height, gabled bay to the east, a three-sided bay on the northwest corner, a five-sided, flat roof, second story addition, and a wrap-around porch which extends to the western elevation. The gabled bay is fenestrated on the first and second floors with a single, large one-over-one wood sash window each and a Palladian window in the peak above. The five-sided addition is lighted with one-over-one aluminum sash windows with the exception of the front window, which is a fixed window filled with stained glass. The principal, single-leaf entrance is located directly below, beneath the porch roof. The three-sided corner bay is capped with a slightly projecting cornice which in turn supports a Classical, pedimented doghouse dormer lighted with two thin one-over-one wood sash windows. The bay itself is lighted on all three sides with one-over-one wood sash windows on both floors.

A rounded shed roof porch extends around this elevation and is supported on mannered Classical columns which are grouped into twos and threes. The base of the columns narrows to support a large, rounded element which then supports the round column and the simple capital above. The columns actually more closely resemble the work of the more eccentric Mannerist or Baroque architects. These grouped columns are in turn supported on panelled impost blocks which rest upon the porch deck. The panels are decorated with stylized floral patterns and a Classical balustrade connects the impost blocks. The porch roof features a short entablature between the capitals and the cornice.

The western elevation features a full-height, three-sided, gabled bay, placed near the center between the wall to the north and the enclosed porch to the south. The front of this bay is fenestrated identically to that seen on the northern elevation; the flanking sides are lighted with one-over-one wood sash windows on both floors. The wall to the north is lighted on the second story with a single one-over-one wood sash window and on the first story with a single fixed, leaded stained glass window which is placed next to the corner bay. The enclosed porch is lighted with new aluminum windows on the second story and is entered through a new beveled glass door on the first story.

The southern elevation is relatively plain. It is lighted with an arched, three-light window in the peak of the gable end above and with a single one-over-one wood sash window in each floor below. An entrance into the enclosed porch is placed to the west.

The eastern elevation is lighted by a single, large one-over-one wood sash window in the wall to the north, a pair of one-over-one wood sash windows on each floor of the central gabled bay, and by two one-over-one wood sash windows placed one above the other in each of the two remaining bays.

**United States Department of the Interior
National Park Service**

**National Register of Historic Places
Continuation Sheet**

Section number 7 Page 2

The entrance hall and public rooms on the first floor are decorated in an abundance of dark, stained wood and feature such details as panelled wood pocket doors, Eastlake spindlework on the stairwell, stained wood mantelpieces, and stained glass windows. The overall effect is very dark, which would have been very appropriate to the late Victorian period. Some alterations have occurred on the upper floors in the process of converting the house into a bed and breakfast, but most of the principal design elements and trim remain.

8. Statement of Significance

Certifying official has considered the significance of this property in relation to other properties:

☐ nationally ☐ statewide ☒ locally

Applicable National Register Criteria ☐ A ☐ B ☒ C ☐ D

Criteria Considerations (Exceptions) ☐ A ☐ B ☐ C ☐ D ☐ E ☐ F ☐ G

Areas of Significance (enter categories from instructions)

Architecture

Period of Significance

N/A

Significant Dates

c. 1895

Cultural Affiliation

N/A

Significant Person

N/A

Architect/Builder

N/A

State significance of property, and justify criteria, criteria considerations, and areas and periods of significance noted above.

☒ See continuation sheet

9. Major Bibliographical References

Previous documentation on file (NPS):

- ☐ preliminary determination of individual listing (36 CFR 67) has been requested
- ☐ previously listed in the National Register
- ☐ previously determined eligible by the National Register
- ☐ designated a National Historic Landmark
- ☐ recorded by Historic American Buildings Survey # _____
- ☐ recorded by Historic American Engineering Record # _____

☒ See continuation sheet

Primary location of additional data:

- ☒ State historic preservation office
- ☐ Other State agency
- ☐ Federal agency
- ☐ Local government
- ☐ University
- ☐ Other

Specify repository: _____

10. Geographical Data

Acreage of property Less than one

UTM References

A 15 495820 3817530
Zone Easting Northing

C

B
Zone Easting Northing

D

☐ See continuation sheet

Verbal Boundary Description

Part of Lot 9, Block 39, Hot Springs Reservation

☒ See continuation sheet

Boundary Justification

This boundary includes all the property historically associated with this resource.

☐ See continuation sheet

11. Form Prepared By

name/title Kenneth Story, Architectural Historian

organization Arkansas Historic Preservation Program

street & number 225 East Markham St., Suite 200

city or town Little Rock

date February 7, 1990

telephone (501) 371-2763

state Arkansas

zip code 72201

United States Department of the Interior
National Park Service

**National Register of Historic Places
Continuation Sheet**

Section number 8 Page 1

Summary

The W.H. Moore House is one of the last of the grand late nineteenth century Transitional homes in this neighborhood of Hot Springs. Encroaching retail businesses and light industry have taken most of the other contemporaneous houses which formerly lined Malvern Avenue, and thus the W.H. Moore House stands virtually alone by virtue of both the quality of its design and its age.

Elaboration

The W.H. Moore House is one of the last surviving high-style residences in this neighborhood which dates from the late nineteenth century and which is designed in the Transitional style. Named for W.H. Moore, who built this house while he was president and general manager of the nearby Valley Planing Mill, it was originally sited on the outskirts of town and was part of a suburb, complete with spacious lawns and easy access to the commercial heart of town. Later, with increasing development along Malvern Avenue, its neighbors were demolished, and now it stands as the only historic residence along this busy stretch of road.

City directories indicate that the Valley Planing Mill was a large lumber and milling operation as of the early twentieth century and purportedly the only planing mill in the city of Hot Springs. Little other documentation of the mill and the extent of its business has survived, but it is not unreasonable to conclude that it must have been the principal supplier of milled and finished lumber for the contemporaneous campaign of replacing the earlier wood frame bathhouses with the lavishly appointed buildings which survive today.

The W.H. Moore House is one of the more unusual Transitional style homes in the state, by virtue of the Baroque columns which are used with impost blocks to support the porch roof and articulate the exterior of the porch space. The interior entrance hall retains a wealth of original detail, including a panelled stairway, panelled pocket doors, elaborate spindlework ornament, and a panelled sitting nook in the round corner bay. It is also unusual by virtue of its cypress construction, which insures greater structural integrity over time. No doubt Moore's position at the planing mill positively effected the affordability of this expensive construction method.

The Moore House is significant in its neighborhood by virtue of its design, its construction, and the fact that it is one of the few buildings of this age and period which survive here.

**United States Department of the Interior
National Park Service**

**National Register of Historic Places
Continuation Sheet**

Section number 9 Page 1

Deed Records, Garland County, Arkansas, Book "Y", pg. 308.

Hot Springs City Directory, 1917.

Sanborn Maps, 1915.

**United States Department of the Interior
National Park Service**

**National Register of Historic Places
Continuation Sheet**

Section number 10 Page 1

Verbal Boundary Description

Beginning at a point formed by the intersection of the southerly line of Moore Street and the westerly line of Malvern Avenue, which said point is 125 feet northerly from where the dividing line between lots 9 and 10 of said block 39 intersects the line of Malvern Avenue; thence run southerly along the west side of Malvern Avenue a distance of 65 feet; thence westerly or southwesterly parallel with the south line of Moore Street a distance of 140.9 feet; thence northerly a distance of 65 feet to a point on the south line of Moore Street a distance of 140 feet from the place of beginning; thence along the south line of Moore Street a distance of 140 feet to the place of beginning.

UNITED STATES DEPARTMENT OF THE INTERIOR
NATIONAL PARK SERVICE

NATIONAL REGISTER OF HISTORIC PLACES
EVALUATION/RETURN SHEET

REQUESTED ACTION: NOMINATION

PROPERTY NAME: Moore, W. H., House

MULTIPLE
NAME:

STATE & COUNTY: ARKANSAS, Garland

DATE RECEIVED: 2/12/90 DATE OF PENDING LIST: 2/27/90
DATE OF 16TH DAY: 3/15/90 DATE OF 45TH DAY: 3/29/90
DATE OF WEEKLY LIST:

REFERENCE NUMBER: 90000429

NOMINATOR: STATE

REASONS FOR REVIEW:

APPEAL: N DATA PROBLEM: N LANDSCAPE: N LESS THAN 50 YEARS: N
OTHER: Y PDIL: N PERIOD: N PROGRAM UNAPPROVED: N
REQUEST: N SAMPLE: N SLR DRAFT: N NATIONAL: N

COMMENT WAIVER: N

☒ ACCEPT ☐ RETURN ☐ REJECT 3/27/90 DATE

ABSTRACT/SUMMARY COMMENTS:

*Architecturally distinctive
Queen Anne building within
local context*

RECOM./CRITERIA Accept
REVIEWER A. Federman
DISCIPLINE 3/27/90
DATE Arch Hist

DOCUMENTATION see attached comments Y/N see attached SLR Y/N

CLASSIFICATION

☐ count ☐ resource type

STATE/FEDERAL AGENCY CERTIFICATION

FUNCTION

☐ historic ☐ current

DESCRIPTION

☐ architectural classification
☐ materials
☐ descriptive text

SIGNIFICANCE

Period Areas of Significance--Check and justify below

Specific dates Builder/Architect
Statement of Significance (in one paragraph)

☐ summary paragraph
☐ completeness
☐ clarity
☐ applicable criteria
☐ justification of areas checked
☐ relating significance to the resource
☐ context
☐ relationship of integrity to significance
☐ justification of exception
☐ other

BIBLIOGRAPHY

GEOGRAPHICAL DATA

☐ acreage ☐ verbal boundary description
☐ UTM's ☐ boundary justification

ACCOMPANYING DOCUMENTATION/PRESENTATION

☐ sketch maps ☐ USGS maps ☐ photographs ☐ presentation

OTHER COMMENTS

Questions concerning this nomination may be directed to

Phone _____

Signed _____

Date _____



W. H. MOORE HOUSE

HOT SPRINGS, ARKANSAS

PHOTOGRAPHED BY M. A. ANDERSON

JULY, 1988

NEGATIVES ON FILE AT NMPP

VIEW FROM NORTH



W. H. MOORE House

HOT SPRINGS, ARKANSAS

PHOTOGRAPHED BY M. A. ANDERSON

JULY, 1988

NEGATIVES ON FILE AT NHPP

VIEW FROM NORTHWEST



W. H. MOORE HOUSE

HOT SPRINGS, ARKANSAS

PHOTOGRAPHED BY M. A. ANDERSON

JULY, 1988

NEGATIVES ON FILE AT AHPP

PORCH COLUMN DETAIL



W. H. MOORE HOUSE

HOT SPRINGS, ARKANSAS

PHOTOGRAPHED BY M. A. ANDERSON

JULY, 1988

NEGATIVES ON FILE AT AHPP

FRONT DOOR DETAIL



W. H. MOORE HOUSE
HOT SPRINGS, ARKANSAS
PHOTOGRAPHED BY M. A. ANDERSON

JULY, 1988

NEGATIVES ON FILE AT NMHP

VIEW FROM WEST



W. H. MOORE HOUSE

HOT SPRINGS, ARKANSAS

PHOTOGRAPHED BY M. A. ANDERSON

JULY, 1988

NEGATIVES ON FILE AT NHPP

FRONT ENTRANCE HALL



W. H. MOORE House
HOT SPRINGS, ARKANSAS

PHOTOGRAPHED BY M. A. ANDERSON

JULY, 1988

NEGATIVES ON FILE AT NHPP

REAR STAIRWELL



W. H. MOORE HOUSE

HOT SPRINGS, ARKANSAS

PHOTOGRAPHED BY M. A. ANDERSON

JULY, 1988

NEGATIVES ON FILE AT AHPP

INTERIOR CUPBOARD



W. H. MOORE HOUSE

HOT SPRINGS, ARKANSAS

PHOTOGRAPHED BY M. A. ANDERSON

JULY, 1988

NEGATIVES ON FILE AT NHPP

DOOR BENEATH HALLWAY STAIR



W. H. MOORE HOUSE
HOT SPRINGS, ARKANSAS
PHOTOGRAPHED BY M. A. ANDERSON
JULY, 1988

NEGATIVES ON FILE AT NMPP

INTERIOR DOOR



W. H. MOORE HOUSE
HOT SPRINGS, ARKANSAS

PHOTOGRAPHED BY M. A. ANDERSON

JULY, 1988

NEGATIVES ON FILE AT AHPP

VIEW FROM SOUTHWEST



W. H. MOORE HOUSE
HOT SPRINGS, ARKANSAS
PHOTOGRAPHED BY M. R. ANDERSON
July, 1988
NEGATIVES ON FILE AT NHPP

INTERIOR HALLWAY DETAIL



W. H. MOORE HOUSE

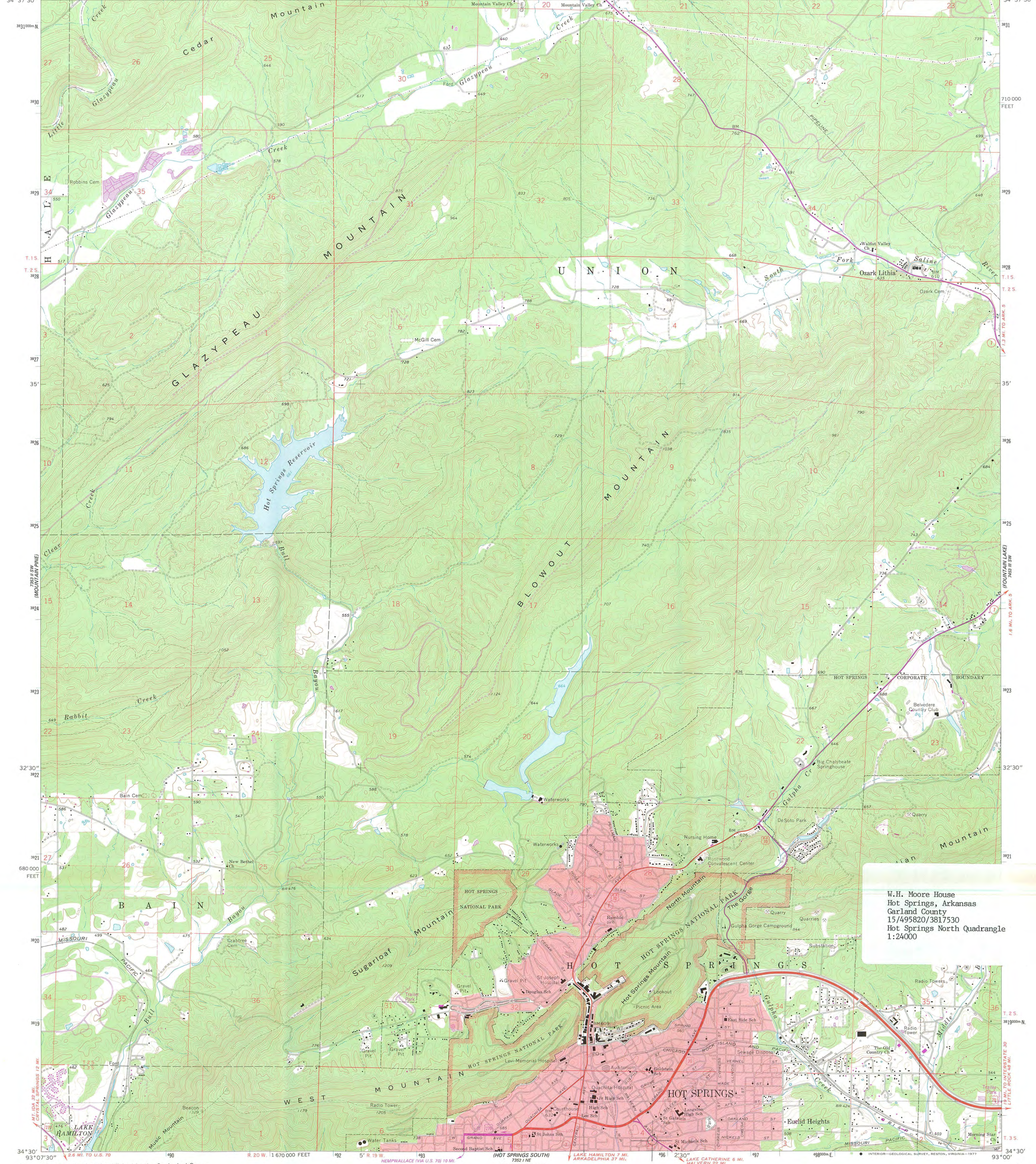
HOT SPRINGS, ARKANSAS

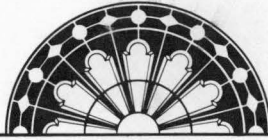
PHOTOGRAPHED BY M. A. ANDERSON

JULY, 1988

NEGATIVES ON FILE AT DHPP

INTERIOR MILLWORK DETAIL





ARKANSAS
HISTORIC
PRESERVATION
PROGRAM

February 8, 1990

RECEIVED

FEB 12 1990

NATIONAL
REGISTER

Carol D. Shull
Chief of Registration
United States Department of the Interior
National Register of Historic Places
National Park Service
1100 "L" Street, N.W.
Washington, D.C. 20240

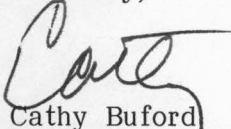
RE: W.H. Moore House - Dogwood Manor

Dear Carol:

We are enclosing for your review the nomination for the above referenced property. The Arkansas Historic Preservation Program has complied with all applicable nominating procedures and notification requirements in the nomination process.

Thank you for your consideration in this matter.

Sincerely,



Cathy Buford
State Historic Preservation Officer

CB/KS/lss

Enclosures

