



NO STOPPING

←

NO STOPPING

←

B-1020

HENDLER CREAMERY

1100 E. BALTO. ST.

BALTO. CITY MD 21202

C. BELFORE

12/15/06

NEG: MHT

VIEW LOOKING  
WEST FROM E. BALTO  
& AISQUITHT ST.

#1/57 (PHOTOS KEPT TO PANS)



B-1020

HENDER CREAMERY

1100 E. BALTO. ST.

BALTO. CITY MD 21202

C. BELFORE

12/15/06

NEG: MHT

VIEW OF SE

CORNER OF SITE

1960S ADDITION

#2/57

EPS





B-1020

HENDER CREAMERY

1100 E. BALTO. ST.

BALTO. CITY MD 21202

C. BELFOUR

12/15/06

NEG: MHT

1892

SOUTH ELEVATION

#3/57



B-1020

HENDLER CREAMERY

1100 E. BALTO. ST.

BALTO. CITY MD 21202

C. BELFOUR

12/15/06

NEG: MHF

DETAIL OF  
SOUTH ELEVATION  
OF 1892 BLDG.

#4/57



B-1020

HENDLER CREAMERY

1100 E. BALTO. ST.

BALTO. CITY MD 21202

C. BELFOUR

12/15/56

NEG: MHT

VIEW OF SOUTH &  
WEST ELEVATIONS

#5/57





B-1020

HENDLER CREAMERY

1100 E. BALTO. ST

BALTO. CITY MD 21202

C. BELFOUR

12/15/06

NEG: MHT

VIEW OF WEST  
ELEVATION ALONG  
EAST ST.

#6/57





B-1020

HENDER CREAMERY

1100 E. BALTO. ST

BALTO. CITY MD 21202

C. BELFOUR

12/15/06

NEG: MHT

VIEW OF NORTH

ELEVATION ALONG

E. FAIRMOUNT AVE

# 7/57



B-1020

HENDLER CREAMERY

1100 E. BALTO. ST

BALTO. CITY MD 21202

C. BELFOUR

12/15/06

NEG: MHT

DETAIL OF UPPER  
SECTION OF 1892

BLDG - NORTH  
ELEVATION

#8/57



B-1020

HENDLER CREAMERY

1100 E. BALTO. ST

BALTO. CITY MD 21202

C. BELFORD

12/15/06

NEG: MHT

VIEW OF NORTH  
ELEVATION LOOKING  
WEST ON E. FAIRMOUNT AVE

#9/57



WM  
WASTE MANAGEMENT  
CORPORATION

B-1020

HENDLER CREAMERY

1100 E. BALTO &

1107 E. FAYETTE ST

BALTO. CITY MD 21202

C. BELFOUR

12/15/06

NEG: MHT

VIEW OF NORTH ELEVATION

OF 1100 E. BALTO & SOUTH

ELEVATION OF 1107 E. FAYETTE

LOOKING EAST OF FARMOUNT

#10/57





B-1020

HENDLER CREAMERY

1107 E. FAYETTE ST.

BALTO. CITY MD 21202

C. BELFOUR

12/15/06

NEG: MHT

VIEW OF SOUTH ELEVATION

OF 1107 E. FAYETTE LOOKING

EAST ON FAIRMOUNT

#11/57



B-1020

HENDLER CREAMERY

1107 E. FAYETTE ST.

BALTO. CITY MD 21202

C. BELFORE

12/15/06

NEG: MHT

VIEW OF EAST & SOUTH

ELEVATIONS OF 1107

E. FAYETTE ST.

#12/57



B-1020

HENDLER CREAMERY

1107 E. FAYETTE ST

BALTO. CITY MD 21202

C. BELFOXE

12/15/06

NEG: MHT

VIEW OF NORTH ELEVATION

OF 1100 E. BALTO. & SOUTH

ELEVATION OF 1107 E. FAYETTE

LOOKING WEST ON E. FARMOUNT

#13/57



B-1020

HENDLER CREAMERY

1107 E. FAYETTE ST.

BALTO. CITY MD 21202

C. BELFOUR

12/15/06

NEG: MHT

VIEW OF EAST & NORTH

ELEVATIONS OF 1107

E. FAYETTE LOOKING

WEST ON E. FAYETTE

#14/57



NO  
STOPPING



CARS TOWED AWAY

SNOW ROUTE  
NO  
PARKING  
DURING  
SNOW EMERGENCY  
8 PM - 9 AM



1105

B-1020

HENDLER CREAMERY

1107 E. FAYETTE ST.

BALTO. CITY MD 21202

C. BELFLORE

12/15/86

NEG: MHT

VIEW OF NORTH ELEVATION  
OF 1107 E. FAYETTE LOOKING  
EAST ON E. FAYETTE

#15/  
57



SHIPPING  
RECEIVIN

B-1020

HENDLER CREAMERY

1100 E. BALTO ST.

BALTO. CITY MD 21202

C. BELFOUR

12/15/06

NEG: MHT

FIRST FLOOR (FORMER  
ENGINE ROOM) LOOKING  
NORTH

#16/57



B-1020

HENDLER CREAMERY

1100 E. BALFO. ST

BALFO. CITY MD 21202

C. BELFOIRE

12/15/86

NEG: MHT

FIRST FLOOR LOOKING  
AT GARAGE DOOR AT  
SOUTH WALL

#17/57



B-1020

HENDLER CREAMERY

1100 E. BALTO. ST.

BALTO. CITY MD 21202

C. BELFOUR

12/15/06

NEG: MHT

STAIR IN SE CORNER

#18/57





B-1020

HENDER CREAMERY

1100 E. BALTO. ST

BALTO, CITY MD 21202

C. BELFOUR

12/15/06

NEG: MHT

FIRST FLOOR SOUTH WALL  
INTERIOR ROOM

#19/57



B-1020

HENDLER CREAMERY

1100 E. BALTO. ST

BALTO. CITY MD 21202

C. BELFOUR

12/15/06

NEG: MHT

FIRST FLOOR SPIRAL

STAIR AT CENTER OF

BLDG.

#20/57



B-1020

HENDLER CREAMERY

1100 E. BALTO. ST

BALTO. CITY MD 21202

C. BELFOUR

12/15/06

NEG: MHT

FIRST FLOOR / 1949

ADDITION LOOKING

NORTH

#21/57



B-1020

HENDER CREAMERY

1100 E. BALTO. ST

BALTO. CITY MD 21202

C. BELFOURE

12/15/06

NEG: MHT

VIEW OF SECOND FLOOR

LANDING AT STAIR AT

SE CORNER

#22/57



WELCOM  
YOU ARE THE MOST IMPORT  
ENTERING THESE DOO



B-1020

HENDER CREAMELY

1100 E. BALTO. ST

BALTO. CITY MD 21202

C. BELFOUR

12/15/06

NEG: MHT

VIEW OF FIRST FLOOR  
LANDING AT STAIR IN  
SE CORNER

#23/57



B-1020

HENDLER CREAMERY

1100 E. BALTO. ST

BALTO. CITY MD 21202

C. BELFOUR

12/15/06

NEG: MHT

SECOND FLOOR OFFICE

LOBBY OFF STAIR IN

SE CORNER

#24/57



B-1020

HENDLER CREAMERY

1100 E. BALFO. ST

BALFO. CITY MD 21202

C. BELFOUR

12/15/06

NEG: MHT

DOORWAY AT SECOND  
FLOOR TO STAIR AT  
SE CORNER

# 25/57



B-1020

HENDLER CREAMERY

1100 E. BALTO. ST

BALTO. CITY MD 21202

C. BELFOUR

12/15/06

NEG: MHT

DOORWAY AT SECOND FLOOR  
TO STAIR TO THIRD FLOOR

#26/57





B-1020

HENDER CREAMERY

1100 E. BALFO. ST

BALFO. CITY MD 21202

C. BELFOUR

12/15/06

NEG: MHT

SPIRAL STAIR AT  
SECOND FLOOR IN  
CENTER OF BLDG.

#27/57



B-1020

HENDER CREAKLEY

1100 E. BALFO. ST

BALFO. CITY MD 21202

C. BELFOUR

12/15/06

NEG: MHT

INTERIOR OF TYPICAL  
FREEZER AT SECOND  
FLOOR

#28/57



B-1020

HENDLER CREAMERY

1100 E. BALTO. ST.

BALTO. CITY MD 21202

C. BELFORE

12/15/06

NEG: MHT

THIRD FLOOR HALLWAY  
TO AUDITORIUM  
LOOKING WEST

#31/57





B-1020

HENDLER CREAMERY

1100 E. BALTO. ST.

BALTO. CITY MD

C. BELFOUR

12/15/06

NEG: MHT

DISPLAY CASE & MIRROR  
IN THIRD FLOOR HALLWAY  
TO AUDITORIUM

#32/57





EXIT

B-1020

HENDLER CREAMERY

1100 E. BALTO. ST

BALTO CITY MD 21202

C. BELFOUR

12/15/06

NEG: MHT

THIRD FLOOR HALLWAY TO  
AUDITORIUM LOOKING  
EAST

#33/57



B-1020

HENDLER CREAMERY

1100 E. BALTO. ST

BALTO. CITY MD 21202

C. BELFOUR

12/15/06

NEG: MHT

THIRD FLOOR AUDITORIUM

& STAGE LOOKING EAST

#34/  
57



B-1020

HENDER CREAMERY

1100 E. BALTO. ST

BALTO. CITY MD 21202

C. BELFORE

12/15/06

NEG: MHT

THIRD FLOOR AUDITORIUM  
LOOKING WEST

#35/57



B-1020

HENDLER CREAMERY

1100 E. BALTO. ST.

BALTO. CITY MD 21202

C. BELFOUR

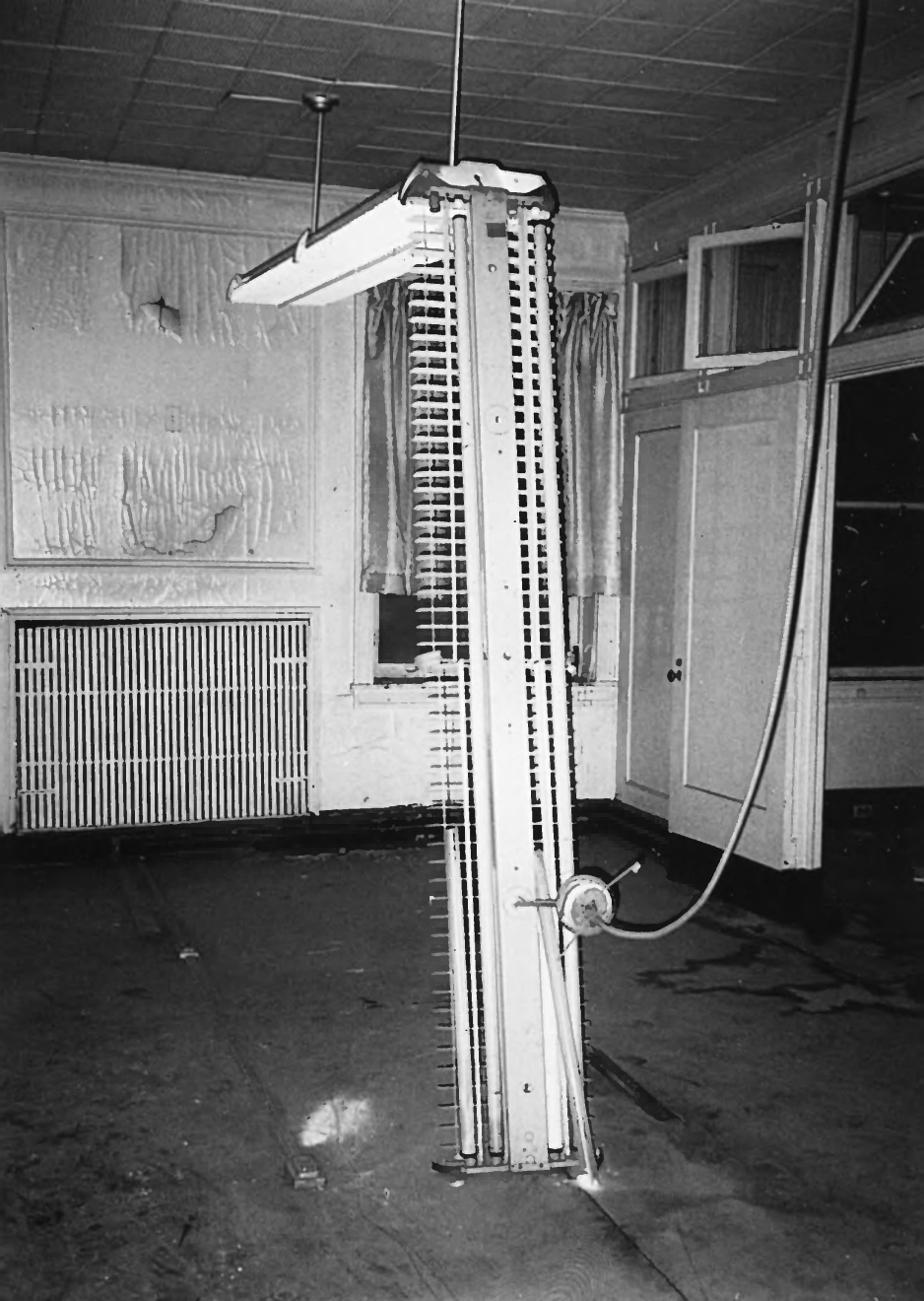
12/15/06

NEG: MHT

DETAIL OF MIRROR  
IN AUDITORIUM

#36/57





B-1020

HENDLER CREAMERY

1100 E. BALTO. ST

BALTO. CITY MD 21202

C. BELFOUR

12/15/06

NEG: MHT

THIRD FLOOR DRESSING  
ROOM AT SW CORNER

#37/57



B-1020

HENDLER CREAMERY

1100 E. BALTO, ST

BALTO, CITY MD 21202

C. BELFORE

12/15/06

NEG: MHT

THIRD FLOOR HALLWAY  
TO PRESSING ROOMS  
LOOKING NORTH

#38/57



B-1020

HENDLER CREAMERY

1100 E. BALTO. ST

BALTO. CITY MD 21202

C. BELFOUR

12/15/06

NEG: MHT

THIRD FLOOR SPIRAL STAIR

AT CENTER OF BUILDING

#39/57

EXIT





B-1020

HENDLER CREAMERY

1100 E. BALGO, ST

BALGO. CITY MD 21202

C. BELFOUR

12/15/06

NEG: MHT

VIEW OF FREEZERS

AT CENTER OF

THIRD FLOOR

#40/57





B-1020

HENDLER CREANERY

1100 E. BALTO. ST

BALTO. CITY MD 21202

C. BELFOUR

12/15/06

NEG: MHT

THIRD FLOOR STORAGE  
AREA LOOKING NORTH

#41/57



B-1020

HENDLER CREAMERY

1100 E. BALTO. ST.

BALTO. CITY MD 21202

C. BELFOLKE

12/15/06

NEG: MHT

THIRD FLOOR STORAGE

AREA LOOKING AT

NW CORNER

#42/57



B-1020

HENDLER CREAMERY

1100 E. BALTO. ST

BALTO. CITY MD 21202

C. BELFOUR

12/15/06

NEG: MHT

THIRD FLOOR SPIRAL  
STAIR TO ATTIC

#43/57



B-1020

HENDLER CREAMERY  
1100 E. BALTO. ST.

BALTO. CITY MD 21202

C. BELFOUR

12/15/06

NEG: MHT

ROOF TRUSSES IN THIRD  
FLOOR STORAGE AREA  
LOOKING SOUTH

#44/57





B-1020

HENDLER CREAMERY

1100 E. BALTO. ST

BALTO. CITY MD 21202

C. BELFOUR

12/15/06

NEG: MHT

VIEW OF ADDITIONS

& CHIMNEY LOOKING

NORTH

#45/57



B-1020

HENDLER CREAMERY

1100 E. BALTO ST.

BALTO. CITY MD 21202

C. BELFOUR

12/15/06

NEG: MHT

ATTIC WINDOW

AT SOUTH WALL

#46/57



B-1020

HENDLER CREAMERY

1100 E. BALTO. ST

BALTO. CITY MD 21202

C. BELFOUR

12/15/06

NEG: MHT

DETAIL OF ROOF  
TRUSSES IN ATTIC

# 47/57





B-1020

HENDLER CREAKERY  
1100 E. BALTO. ST

BALTO. CITY MD 21202

C. BELFOUR

12/15/06

NEG: MHT

Attic Looking South  
IN FRONT SECTION

#48/57





B-1020

HENDLER CREAMERY

1100 E. BALGO. ST

BALGO. CITY MD 21202

C. BELFOUR

12/15/06

NEG: MHT

FREIGHT ELEVATOR

IN ATTIC

#49/57



B-1020

HENDLER CREAMERY

1100 E. BALTO. ST

BALTO. CITY MD 21202

C. BELFOUR

12/15/06

NEG: MHT

ATTIC LOOKING NORTH

IN REAR SECTION

#50/57



B-1020

HENDLER CREAMERY

1100 E. BALFO. ST

BALFO. CITY MD 21202

C. BELFOURE

12/15/86

NEG: MHT

Attic Looking  
South in Rear  
Section

# 57/57





B-1020

HENDER CREAMELY

1107 E. FAYETTE ST.

BALTO. CITY MD 21202

C. BELFOUR

12/15/06

NEG: MHT

FIRST FLOOR

GARAGE LOOKING

EAST

#52/57





B-1020

HENDLER CREAMERY

1107 E. FAYETTE ST.

BALTO. CITY MD 21202

C. BELFORE

12/15/06

NEG: MHT

FIRST FLOOR GARAGE  
LOOKING WEST.

#53/57



B-1020

HENDLER CREAMERY

1107 E. FAYETTE ST.

BALTO. CITY MD 21202

C. BELFOUR

12/15/06

NEG: MHT

FIRST FLOOR GARAGE

LOOKING AT SW CORNER

#54/57



B-1020

HENDLER CREAMERY

1107 E. FAYETTE ST.

BALTO. CITY MD 21202

C. BELFOUR

12/15/06

NEG: MHT

CONCRETE STRUCTURE

AT GARAGE LEVEL

#55/57



B-1020

HENDLER CREAMERY

1107 E. FAYETTE ST.

BALFO. CITY MD 21202

C. BELFOUR

12/15/06

NEG: MHT

STAIR TO SECOND

FLOOR AT SW CORNER

#56/57





B-1020

HENDLER CREAMERY

1107 E. FAYETTE ST.

BALTO. CITY MD 21202

C. BELFORE

12/15/06

NEG: MHT

TYPICAL SECOND  
FLOOR SPACE

#57/57