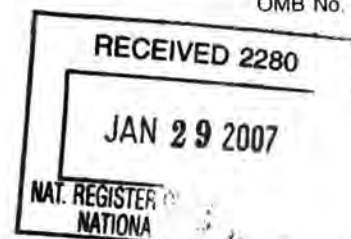


United States Department of the Interior  
National Park Service

National Register of Historic Places  
Registration Form



This form is for use in nominating or requesting determinations for individual properties and districts. See instructions in *How to Complete the National Register of Historic Places Registration Form* (National Register Bulletin 16A). Complete each item by marking "x" in the appropriate box or by entering the information requested. If an item does not apply to the property being documented, enter "N/A" for "not applicable." For functions, architectural classification, materials, and areas of significance, enter only categories and subcategories from the instructions. Place additional entries and narrative items on continuation sheets (NPS Form 10-900a). Use a typewriter, word processor, or computer, to complete all items.

1. Name of Property

historic name WEST HAVEN BAPTIST CHURCH

other names/site number N/A

2. Location

street & number 48 Book Road N/A not for publication

city or town West Haven N/A vicinity

state Vermont code VT county Rutland code 021 zip code 05743

3. State/Federal Agency Certification

As the designated authority under the National Historic Preservation Act, as amended, I hereby certify that this ☒ nomination ☐ request for determination of eligibility meets the documentation standards for registering properties in the National Register of Historic Places and meets the procedural and professional requirements set forth in 36 CFR Part 60. In my opinion, the property ☒ meets ☐ does not meet the National Register criteria. I recommend that this property be considered significant ☐ nationally ☒ statewide ☒ locally. (☐ See continuation sheet for additional comments.)

Suzanne C. Demelo, National Register Specialist 1-25-07  
Signature of certifying official/Title Date

Vermont State Historic Preservation Office  
State or Federal agency and bureau

In my opinion, the property ☐ meets ☐ does not meet the National Register criteria. (☐ See continuation sheet for additional comments.)

\_\_\_\_\_  
Signature of commenting official/Title Date

\_\_\_\_\_  
State or Federal agency and bureau

4. National Park Service Certification

I hereby certify that the property is:

- ☒ entered in the National Register.  
☐ See continuation sheet.
- ☐ determined eligible for the National Register.  
☐ See continuation sheet.
- ☐ determined not eligible for the National Register.
- ☐ removed from the National Register.
- ☐ other, (explain:)

Edson H. Beall  
Signature of the Keeper

Date of Action

3-13-07

West Haven Baptist Church  
Name of Property

Rutland County, VT  
County and State

### 5. Classification

**Ownership of Property**  
(Check as many boxes as apply)

- ☒ private  
☐ public-local  
☐ public-State  
☐ public-Federal

**Category of Property**  
(Check only one box)

- ☒ building(s)  
☐ district  
☐ site  
☐ structure  
☐ object

**Number of Resources within Property**  
(Do not include previously listed resources in the count.)

Contributing	Noncontributing
<u>1</u>	
	buildings
	sites
	structures
	objects
<u>1</u>	Total

**Name of related multiple property listing**  
(Enter "N/A" if property is not part of a multiple property listing.)

**Number of contributing resources previously listed  
in the National Register**

Religious Buildings, Sites, and Structures 0  
in Vermont

### 6. Function or Use

**Historic Functions**  
(Enter categories from instructions)

Religion/religious facility  
\_\_\_\_\_  
\_\_\_\_\_  
\_\_\_\_\_  
\_\_\_\_\_  
\_\_\_\_\_  
\_\_\_\_\_

**Current Functions**  
(Enter categories from instructions)

Religion/religious facility  
\_\_\_\_\_  
\_\_\_\_\_  
\_\_\_\_\_  
\_\_\_\_\_  
\_\_\_\_\_  
\_\_\_\_\_

### 7. Description

**Architectural Classification**  
(Enter categories from instructions)

Federal  
Gothic Revival  
\_\_\_\_\_

**Materials**  
(Enter categories from instructions)

foundation stone  
walls weatherboard  
\_\_\_\_\_  
roof slate  
other glass  
brick

### Narrative Description

(Describe the historic and current condition of the property on one or more continuation sheets.)

**United States Department of the Interior  
National Park Service**

**National Register of Historic Places  
Continuation Sheet**

West Haven Baptist Church  
West Haven, Rutland County, VT

Section number 7 Page 1

---

**Description**

Sited at the south edge of West Haven hamlet in an agricultural setting, the West Haven Baptist Church combines vernacular Federal and Gothic Revival exterior stylistic features with Victorian interior design. The one-story, three-by-three-bay, clapboarded building of rectangular plan carries a slate-shingled gable roof, its eaves enriched by a full entablature. A two-stage, clapboarded bell tower rises above the shallow pedimented entrance pavilion on the main (east) gable facade. The pavilion incorporates a central entrance with double-leaf paneled doors flanked by the overscale pointed-arch windows with multi-light sash common to the building. The remodeled interior displays beadboarded wall sheathing below a matchboarded ceiling; a curved-front dais spans the west end of the open auditorium while a choir loft occupies the upper level above the entrance vestibule. The church blends original and historic fabric in a manner that retains overall integrity of location, design, setting, materials, workmanship, feeling, and association.

The West Haven Baptist Church stands on the west side of Book Road, a short distance south of its intersection with Main Road at the center of the hamlet of West Haven. An open field surrounds the building and its small lot. A horizontal-board fence extends northeastward from the northeast front corner of the building to separate the front grounds from the adjacent field. The grounds slope gently downward from the paved road, landscaped only with cultivated lawn. Nearly concealing each front corner of the building, a coniferous tree pruned into a roughly cylindrical form rises almost to the height of the horizontal eaves.

The church consists of a rectangular block oriented with its gable roof perpendicular to the road. The one-story building measures overall about 34.5 feet in north-south width by 46.5 feet in east-west length. Centered on the main (east) gable facade, a gabled entrance pavilion projects 4 feet forward from the full-width wall plane but only 22.5 feet in width. Its pedimented gable parallels the pitch of the main roof but rises to a lower peak.

**United States Department of the Interior  
National Park Service**

**National Register of Historic Places  
Continuation Sheet**

West Haven Baptist Church  
West Haven, Rutland County, VT

Section number 7 Page 2

---

The building rests on a foundation laid with mortared limestone blocks of irregular size. The wall surfaces are sheathed with clapboards, stopped at the corners by narrow vertical boards. A full entablature follows both the horizontal and raking eaves of the gable roof. In lieu of a dentil band, the entablature incorporates a torus molding pierced with multiple drilled holes.

The roof slopes are shingled with slate of various colors in random positions, probably the result of repairs through the years. At the rear (west) end of the north slope, an interior brick stove chimney with a rectangular shaft now lacks its original corbeled cap. A corresponding chimney has been removed from the south slope.

The main (east) gable facade of the church presents a symmetrical arrangement dominated by the shallow pavilion with the central main entrance flanked closely by an overscale pointed-arch window on each side. An open concrete deck spans the pavilion only two steps above ground level, having replaced in 1982 an earlier wood counterpart.

The entrance ensemble incorporates double-leaf, six-panel Christian doors in a slightly recessed position. Enframing the doorway, fluted pilasters support an entablature with starred frieze blocks and pierced torus molding. Each window consists of a double-hung, four-over-four main sash crowned by a five-light fixed sash in the tympanum of the pointed arch, both being glazed with hammered glass; a narrow surround with molded backband outlines the entire opening. Centered between the arches, a small octagonal stained-glass window dates from 1981.

The two-stage bell tower of square plan straddles the ridge of pavilion's gable roof while interrupting the main roof's front gable. The base stage projects forward to match the wall plane of the entrance pavilion, and lacks openings on its clapboarded wall surfaces that are crowned by a projecting entablature. The reduced upper stage contains the bell chamber. A pointed-arch opening (now covered with plywood?) interrupts the clapboarded surface of each face below the projecting entablature that terminates the tower.



**United States Department of the Interior  
National Park Service**

**National Register of Historic Places  
Continuation Sheet**

West Haven Baptist Church  
West Haven, Rutland County, VT

Section number 7 Page 3

---

The north and south eaves facades share nearly identical appearance. Three equally spaced bays fenestrate each facade, each bay having a pointed-arched window with sash matching those on the main (east) facade. The window treatment on these eaves facades differs only by the presence of hinged, louvered wood shutters corresponding to the height of the four-over-four sash below the pointed-arch sash. These are the remnants of shutters that existed historically to cover all window surfaces.

The rear (west) gable facade contrasts with the others by its present lack of openings. However, cuts in the clapboards indicate that two regularly spaced windows matching those elsewhere have been removed. Also, the gable displays only short cornice returns rather than a full pediment in the manner of the main facade.

The interior of the church contains the entrance vestibule below a choir loft, separated by a partition from the open auditorium. The vestibule retains on its wall surfaces wide beaded boards applied horizontally below, and narrower beaded matched boards above, the slender molded chair rail. North and south doorways provide access between the vestibule and auditorium. Each opening has a filleted surround, and each door has four raised panels on the vestibule side.

The present appearance of the auditorium reflects refurbishing done in 1871, 1886, and 1902. The wall surfaces are sheathed with beaded matched boards applied vertically below the thicker molded chair rail linking the window sills and horizontally above that level. Three decorative stenciled bands encircle the walls respectively at the levels of the chair rail, the imposts of the window arches, and just below the crown molding at the ceiling. The ceiling also is sheathed with matched boards, overlaid by a narrow paneled molding with bullseye corner blocks affixed a few feet inward from and paralleling the walls.

Doorways at the northeast and southeast corners of the auditorium open onto closed flights of winding stairs leading to the choir loft. The northeast flight provides the only present access; the floor of the choir loft extends over the well of the southeast flight. A balustrade with molded rail and balusters protects the

**United States Department of the Interior  
National Park Service**

**National Register of Historic Places  
Continuation Sheet**

West Haven Baptist Church  
West Haven, Rutland County, VT

Section number 7 Page 4

---

rectangular opening between the choir loft and the auditorium, and a molded surround enframes that opening.

A dais spans the west end of the auditorium; its recessed-curve front has opposing flights of steps flanking a central lectern with pointed-arch blind panels and corner colonettes. Open pews with scrolled and paneled bench ends occupy most of the main floor. Suspended by a metal pole from the ceiling, a central chandelier of Victorian design incorporates six oil lamps. An electric light fixture with a "schoolhouse" circular glass globe hangs by a chain in each of the four ceiling quadrants.

The originally Federal style church has received numerous changes through the years. Gothic Revival stylistic features were probably applied during the first remodeling in 1854. The overscale pointed-arch windows were complemented on both stages of the tower by pyramidal-peaked pinnacles at the corners linked by balustrades with stepped rails and pointed-arch openings. These Gothic tower features were removed probably in 1927. On the interior, the choir loft displaced an original high pulpit at the east end of the auditorium; this alteration may have been done during the remodeling in 1886.

## 8. Statement of Significance

### Applicable National Register Criteria

(Mark "x" in one or more boxes for the criteria qualifying the property for National Register listing.)

- ☒ **A** Property is associated with events that have made a significant contribution to the broad patterns of our history.
- ☐ **B** Property is associated with the lives of persons significant in our past.
- ☒ **C** Property embodies the distinctive characteristics of a type, period, or method of construction or represents the work of a master, or possesses high artistic values, or represents a significant and distinguishable entity whose components lack individual distinction.
- ☐ **D** Property has yielded, or is likely to yield, information important in prehistory or history.

### Criteria Considerations

(Mark "x" in all the boxes that apply.)

Property is:

- ☒ **A** owned by a religious institution or used for religious purposes.
- ☐ **B** removed from its original location.
- ☐ **C** a birthplace or grave.
- ☐ **D** a cemetery.
- ☐ **E** a reconstructed building, object, or structure.
- ☐ **F** a commemorative property.
- ☐ **G** less than 50 years of age or achieved significance within the past 50 years.

### Areas of Significance

(Enter categories from instructions)

Architecture

Religion

### Period of Significance

1831-1956

### Significant Dates

1831

1902

### Significant Person

(Complete if Criterion B is marked above)

N/A

### Cultural Affiliation

N/A

### Architect/Builder

Unknown

## Narrative Statement of Significance

(Explain the significance of the property on one or more continuation sheets.)

## 9. Major Bibliographical References

### Bibliography

(Cite the books, articles, and other sources used in preparing this form on one or more continuation sheets.)

### Previous documentation on file (NPS):

- ☐ preliminary determination of individual listing (36 CFR 67) has been requested
- ☐ previously listed in the National Register
- ☐ previously determined eligible by the National Register
- ☐ designated a National Historic Landmark
- ☐ recorded by Historic American Buildings Survey # \_\_\_\_\_
- ☐ recorded by Historic American Engineering Record # \_\_\_\_\_

### Primary location of additional data:

- ☒ State Historic Preservation Office
- ☐ Other State agency
- ☐ Federal agency
- ☐ Local government
- ☐ University
- ☐ Other

Name of repository:

West Haven Baptist Church  
Name of Property

Rutland County, VT  
County and State

## 10. Geographical Data

**Acreage of Property** 0.68

### UTM References

(Place additional UTM references on a continuation sheet.)

1	18	633230	4834160
Zone	Easting	North	ing
2			

3			
Zone	Easting	North	ing
4			

☐ See continuation sheet

### Verbal Boundary Description

(Describe the boundaries of the property on a continuation sheet.)

### Boundary Justification

(Explain why the boundaries were selected on a continuation sheet.)

## 11. Form Prepared By

name/title Hugh H. Henry, Historic Preservation Consultant

organization N/A date April 2006

street & number 2148 Green Mountain Turnpike telephone 802-875-3379

city or town Chester state Vermont zip code 05143-8873

### Additional Documentation

Submit the following items with the completed form:

### Continuation Sheets

### Maps

A **USGS map** (7.5 or 15 minute series) indicating the property's location.

A **Sketch map** for historic districts and properties having large acreage or numerous resources.

### Photographs

Representative **black and white photographs** of the property.

### Additional items

(Check with the SHPO or FPO for any additional items)

### Property Owner

(Complete this item at the request of SHPO or FPO.)

name West Haven Baptist Society, c/o Nancy R. Best, Trustee

street & number 2442 Main Road telephone 802-265-4527

city or town West Haven state Vermont zip code 05743

**Paperwork Reduction Act Statement:** This information is being collected for applications to the National Register of Historic Places to nominate properties for listing or determine eligibility for listing, to list properties, and to amend existing listings. Response to this request is required to obtain a benefit in accordance with the National Historic Preservation Act, as amended (16 U.S.C. 470 *et seq.*).

**Estimated Burden Statement:** Public reporting burden for this form is estimated to average 18.1 hours per response including time for reviewing instructions, gathering and maintaining data, and completing and reviewing the form. Direct comments regarding this burden estimate or any aspect of this form to the Chief, Administrative Services Division, National Park Service, P.O. Box 37127, Washington, DC 20013-7127; and the Office of Management and Budget, Paperwork Reductions Projects (1024-0018), Washington, DC 20503.



**United States Department of the Interior  
National Park Service**

**National Register of Historic Places  
Continuation Sheet**

West Haven Baptist Church  
West Haven, Rutland County, VT

Section number 8 Page 5

---

**Statement of Significance**

The West Haven Baptist Church holds significance under National Register Criterion C in the area of Architecture for embodying the distinctive characteristics of a modest rural church built in 1831 in vernacular Federal style and modified probably in 1854 with Gothic Revival style features. The West Haven church also holds significance under Criterion A in the area of Religion for being associated with an early Baptist Society founded in 1803 and active continuously through the subsequent two centuries to the present. Within the Vermont historic context of Religious Trends, 1615-1950, the West Haven Baptist Church represents the dispersal of Gothic Revival influence in Vermont religious architecture during the middle nineteenth century. Although some of its Gothic features have been removed, the West Haven church retains sufficient integrity to convey the qualities of its stylistic heritage. The church is being nominated under the "Religious Buildings, Sites, and Structures in Vermont" Multiple Property Documentation Form, and meets clearly the registration requirements the Church property type.

Nine residents of West Haven met on December 14, 1803 to organize the Baptist Society in the town. Assisted by delegates from Baptist churches in nearby towns, the group adopted six articles of faith and a covenant. The society held meetings during its early years varying among the house of William Pattison (the first pastor), a local schoolhouse, and a union church building, the latter never actually completed.

A quarter-century passed before the Baptist Society was able to build its own church. At a meeting in March, 1830, the members voted to "make an effort to build a meeting house," and chose a committee of three to "procure a place to set a house and to draw a draft [plan?] of said house...." After voting in June "to build a meeting house of wood," the members decided in November "to build a meeting house forty-six by thirty-four feet on the ground with a [illegible] section in front."

The present building was erected during 1831. The Society meeting on January 17, 1832 occurred "at the new meeting house," and the "slips and pews" were sold at that time for amounts

**United States Department of the Interior  
National Park Service**

**National Register of Historic Places  
Continuation Sheet**

West Haven Baptist Church  
West Haven, Rutland County, VT

Section number 8 Page 6

---

ranging upward to \$185. The interior was arranged in the traditional meetinghouse plan; a high pulpit reached by a flight of winding stairs dominated the east end of the auditorium. The cost of the building amounted to some \$2,000.

The identity of the designer or builder of the church remains unknown. The minutes of a Society meeting in January, 1833 mention financial "settling with builders of said house" but omit the names of the builders. The Vermont Division for Historic Preservation, in its published *The Historic Architecture of Rutland County*, speculates that the master-builder Elisha Scott of nearby Poultney, Vermont, may have been the originator.

Coincidentally, Elisha Scott was engaged during the same period (1831-32) in the building of St. John's Episcopal Church in East Poultney. That church possesses similarity in Gothic Revival style, scale, and form to the West Haven Baptist Church. Nevertheless, the East Poultney church exhibits clearly more sophisticated design, especially of the dramatic Gothic-arched entrance ensemble, the slender proportions of the window openings, and the massing of the tower stages.

Indeed, the West Haven church probably received its Gothic features as overlay subsequent to its construction. The building retains the basic character of transitional Federal-Greek Revival design common to the early 1830s. The most telling contrast with the original Gothic of St. John's appears in the conservative Federal style entrance ensemble with its fluted pilasters and entablature. Furthermore, the pointed-arch windows are noticeably overscale for the building, also contrasting with the counterparts on the East Poultney church and suggesting that they were not part of the original West Haven design.

Two decades after the original construction, a 1903 centennial history notes that the West Haven church received "substantial repairs and changes" in 1854. This reference probably indicates the origin of the Gothic Revival features, primarily the pointed-arch windows and the balustraded pinnacles on both stages of the tower. By that time, the Gothic Revival style had pervaded religious architecture in Vermont, and the West Haven congregation may have decided to join the current fashion.

**United States Department of the Interior  
National Park Service**

**National Register of Historic Places  
Continuation Sheet**

West Haven Baptist Church  
West Haven, Rutland County, VT

Section number 8 Page 7

---

The church building received its next cosmetic "repair" starting in the fall of 1871 and completed by the following February. At that time, according to church records, it was "painted outside & inside, grained, varnished & papered and cushioned." This extensive decorative work cost about \$700.00.

The interior of the building may have been altered to its present form in 1886. The Building Committee reported to the members at a meeting in January, 1887 the "amt expended on church by painting outside and sealing & painting inside and changing galary [sic] for the singers to the side of [illegible] about \$400.00...." This may represent the removal of the original high pulpit and the creation of the present choir gallery.

Membership in the church fluctuated during the 19th century between sporadic revivals and intervening declines. The nadir came in 1894, when the number matched the twenty-two recorded ninety years earlier in 1804. Then a summer ministry by a theological student, J. A. M. Crouch, brought an "increase swift, surprising" with thirty-eight new baptisms. The church entered the 20th century with resurgent strength and resources.

A photograph taken on April 11, 1901 documents the exterior appearance of the church building wearing its array of Gothic Revival features. The bell tower provided the dominant forms, bristling with pyramidal-peaked pinnacles linked by pointed-arch balustrades on both roof tiers. These complemented the overscale pointed-arch windows illuminating the main story.

The 1901 photograph also shows part of the horse sheds standing on the south grounds and perpendicular to the church. That one-story, gable-roofed building had the typical open bays on its east front facing the road. (The sheds were removed in the 1920s after automobiles became the dominant means of local travel.) The next general refurbishing of the church building came during the summer of 1902. The Society meeting in January, 1903 approved the amount of \$763.19 "expended for painting inside and outside of church also for cushions & carpets and other repairs on underpinnings and wood shed." This work made the building "fresh and beautiful" for the approaching centennial of the Society.

**United States Department of the Interior  
National Park Service**

**National Register of Historic Places  
Continuation Sheet**

West Haven Baptist Church  
West Haven, Rutland County, VT

Section number 8 Page 8

---

The members of the church Society celebrated its one-hundredth anniversary in the fall of 1903. Baptist clergy from throughout Vermont came to West Haven, and participated in special exercises lasting most of the day and evening of October 21. The event precipitated the writing of a short history of the church interwoven with a record of the centennial exercises.

The building probably lost the distinctive Gothic Revival features on its tower during the fall of 1927. The church records note that "extensive repairs on the church tower were completed" in November. The pinnacled wood cresting was undoubtedly deteriorating from exposure to weather, and the cost of replacing the purely decorative features probably seemed extravagant when added to the necessary repairs.

The following year (1928), the church members commemorated the 125th anniversary of the founding of the West Haven Baptist Society. A special service was held on November 18 "with practically every seat in the small edifice occupied," according to a contemporary newspaper account.

Only minor changes were made to the church building during the remainder of the 20th century. An unsafe stove connected to the south chimney together with roof leaks around that chimney caused its removal from the south roof slope about 1944. Technological change entered the building in 1945, when wiring was installed for electricity. Probably in deference to traditional interests, the oil-lamp chandelier and wall sconces were left in place while the electric lights were suspended from the ceiling.

Subsequently, a few changes have been made on the exterior of the building. In 1981, the small stained-glass window was inserted in the main facade. The following year, the low wood deck spanning the same facade was replaced with the present concrete counterpart. Finally, in 1992, a bell was installed in the bell chamber of the tower.

The year 2003 brought "The 200th Year Observance of the Founding of the Baptist Church of Christ in West Haven, Vermont," the title of the booklet marking the event. A celebratory service was held on September 21; it included the presentation of a



**United States Department of the Interior  
National Park Service**

**National Register of Historic Places  
Continuation Sheet**

West Haven Baptist Church  
West Haven, Rutland County, VT

Section number 8 Page 9

---

certificate from the American Baptist Historical Society "in recognition of the Two Hundredth Anniversary...."

The bicentennial observance, of course, related to the Baptist Society rather than the church building itself. The lack of an adequate heating system now restricts services to the summer season; nevertheless, during that part of the year, the church experiences an active revival of its original use. Although somewhat altered from its original design, the West Haven Baptist Church continues to represent both early 19th-century religious activity in West Haven and contemporary vernacular church architecture in west-central Vermont.



**United States Department of the Interior  
National Park Service**

**National Register of Historic Places  
Continuation Sheet**

West Haven Baptist Church  
West Haven, Rutland County, VT

Section number 9 Page 10

---

**Bibliography**

Child, Hamilton, comp. *Gazetteer and Business Directory of Rutland County, Vt., for 1881-82.* Syracuse, N. Y., 1881.

"The Hundredth Anniversary of the West Haven Vermont Baptist Church Observed October 21, 1903." Pamphlet in collection of West Haven Baptist Church.

Records of the West Haven Baptist Church, West Haven, Vt. Books 1-7. 1803-1995.

Vermont Division for Historic Preservation, Curtis B. Johnson, ed. *The Historic Architecture of Rutland County.* Montpelier, Vt.: Vermont Division for Historic Preservation, 1988.

Best, Nancy R., Trustee, West Haven, Vt. Personal interviews by Hugh H. Henry on January 13 and March 29, 2006.

**United States Department of the Interior  
National Park Service**

**National Register of Historic Places  
Continuation Sheet**

West Haven Baptist Church  
West Haven, Rutland County, VT

Section number 10 Page 11

---

**Verbal Boundary Description**

The property being nominated consists of the West Haven Baptist Church and its rectangular lot of land adjoining the west side of Book Road. The lot has dimensions of about 211 feet in the north-south direction by 139.5 feet east-west. A deed specific to the church lot has not been discovered in the Land Records of the Town of West Haven.

**Boundary Justification**

The boundary of the property being nominated encompasses the lot of land historically related to the West Haven Baptist Church, and is sufficient to protect the integrity of the church.

**United States Department of the Interior  
National Park Service**

**National Register of Historic Places  
Continuation Sheet**

Photographs  
Section number \_\_\_\_\_ Page 12

West Haven Baptist Church  
West Haven, Rutland County, VT

---

**Photographs**

The following information applies to all photographs except where noted:

West Haven Baptist Church  
West Haven, Rutland County, Vermont  
Credit: Hugh H. Henry  
Date: March 2006  
Negative filed at Vermont Division for Historic Preservation

Photograph 1  
Setting of church on west side of Book Road; view looking northwest.

Photograph 2  
South and east facades; view looking northwest.

Photograph 3  
Main (east) entrance ensemble; view looking west.

Photograph 4  
North and west facades; view looking southeast.  
Date: January 2006

Photograph 5  
Interior of auditorium; view looking west.

UNITED STATES DEPARTMENT OF THE INTERIOR  
NATIONAL PARK SERVICE

NATIONAL REGISTER OF HISTORIC PLACES  
EVALUATION/RETURN SHEET

REQUESTED ACTION: NOMINATION

PROPERTY NAME: West Haven Baptist Church

MULTIPLE NAME: Religious Buildings, Sites and Structures in Vermont MPS

STATE & COUNTY: VERMONT, Rutland

DATE RECEIVED: 1/29/07 DATE OF PENDING LIST: 2/16/07  
DATE OF 16TH DAY: 3/03/07 DATE OF 45TH DAY: 3/14/07  
DATE OF WEEKLY LIST:

REFERENCE NUMBER: 07000161

REASONS FOR REVIEW:

APPEAL: N DATA PROBLEM: N LANDSCAPE: N LESS THAN 50 YEARS: N  
OTHER: N PDIL: N PERIOD: N PROGRAM UNAPPROVED: N  
REQUEST: N SAMPLE: N SLR DRAFT: N NATIONAL: N

COMMENT WAIVER: N

☒ ACCEPT ☐ RETURN ☐ REJECT 3.13.07 DATE

ABSTRACT/SUMMARY COMMENTS:

Entered in the  
National Register

RECOM./CRITERIA \_\_\_\_\_

REVIEWER \_\_\_\_\_ DISCIPLINE \_\_\_\_\_

TELEPHONE \_\_\_\_\_ DATE \_\_\_\_\_

DOCUMENTATION see attached comments Y/N see attached SLR Y/N

If a nomination is returned to the nominating authority, the nomination is no longer under consideration by the NPS.





WEST HAVEN BAPTIST CHURCH  
WEST HAVEN, RUTLAND CO., VT.  
Photograph 1



WEST HAVEN BAPTIST CHURCH  
WEST HAVEN, RUTLAND CO., VT.  
Photograph 2

*West Haven  
Baptist Church*  
Est 1803

SUNDAYS  
June - September  
9:30 am  
*Everyone Welcome*

WEST HAVEN BAPTIST CHURCH

WEST HAVEN, RUTLAND CO., VT.

Photograph 3





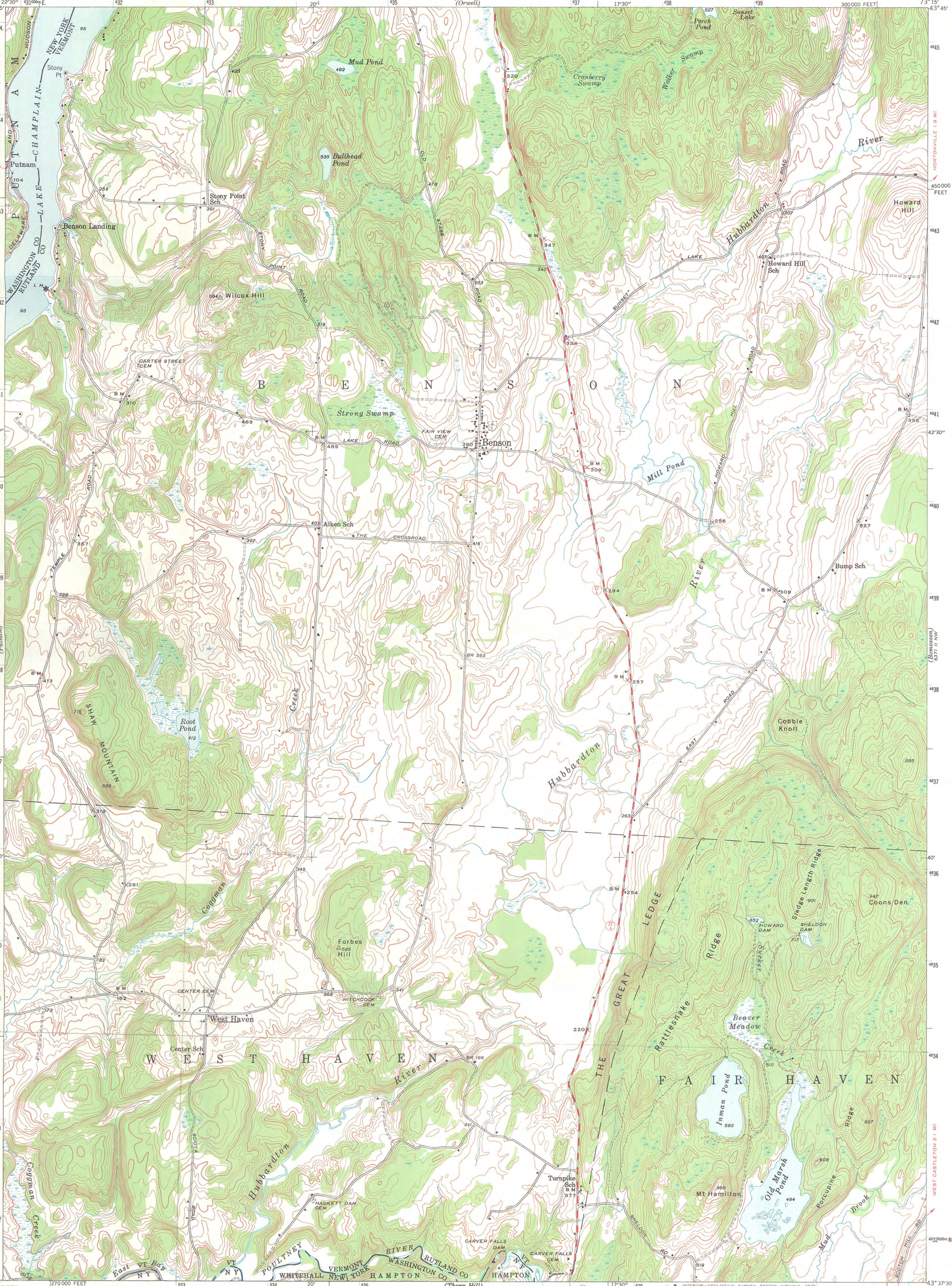
WEST HAVEN BAPTIST CHURCH  
WEST HAVEN, RUTLAND CO., VT.  
Photograph 4



WEST HAVEN BAPTIST CHURCH  
WEST HAVEN, RUTLAND CO., VT.  
Photograph 5

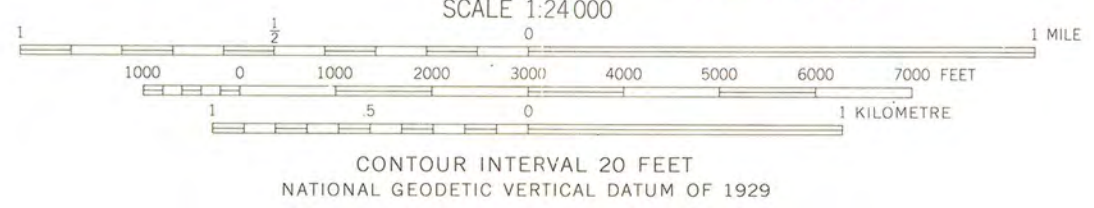
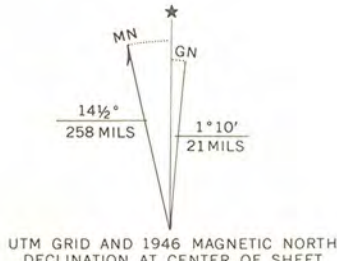


WEST HAVEN BAPTIST CHURCH  
WEST HAVEN, RUTLAND CO., VT.  
UTM Reference:  
18/633230/4834160



Mapped by the Geological Survey  
1946

ROAD CLASSIFICATION  
Medium-duty ——— Light-duty ———  
Unimproved dirt ———  
State Route ○



Interior—Geological Survey, Reston, Virginia—1976  
Polyconic projection. 1927 North American datum  
10000 foot grid based on Vermont  
rectangular coordinate system  
1000-metre Universal Transverse Mercator grid  
ticks, zone 18, shown in blue

BENSON, VT. — N. Y.

N4337.5—W7315/7.5

1946

AMS 6371 III NE—SERIES V813

FOR SALE BY U. S. GEOLOGICAL SURVEY, RESTON, VIRGINIA 22092  
A FOLDER DESCRIBING TOPOGRAPHIC MAPS AND SYMBOLS IS AVAILABLE ON REQUEST

