





KENTUCKY HERITAGE COUNCIL
STATE HISTORIC PRESERVATION OFFICE
FRANKFORT, KENTUCKY 40601

Name Mattingly House (NE-135)(Early Stone Bldgs.)
Location 9/10 M.from US 150 at N.side of Bluegrass Park-
way interchange, Nelson County, Kentucky
Photographer Carolyn Murray Wooley
Date Taken December 1983
Negative Location Kentucky Heritage Council
View south front and east end

Photo # 1





KENTUCKY HERITAGE COUNCIL
STATE HISTORIC PRESERVATION OFFICE
FRANKFORT, KENTUCKY 40601

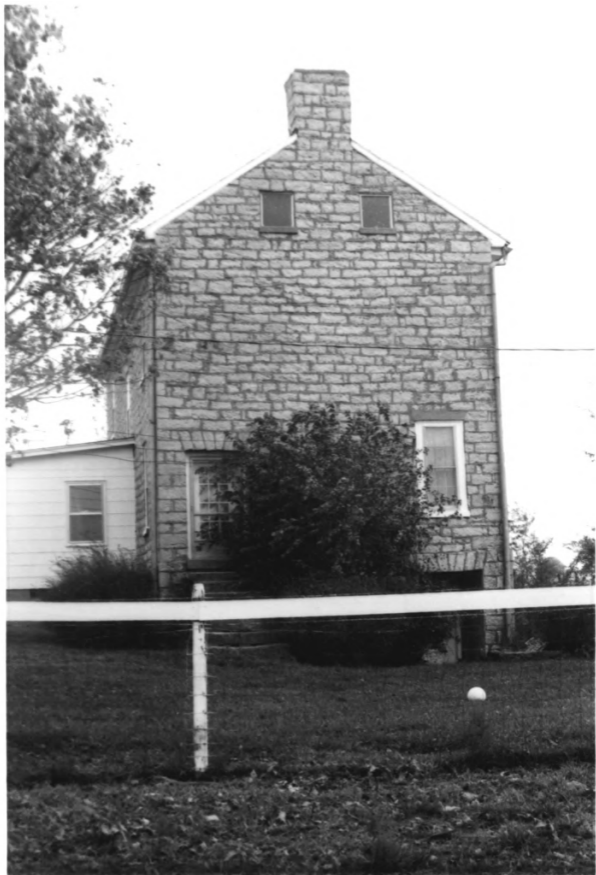
Mattingly

Name Mattingly House (NE-135)(Early Stone Bldgs.)
Location 9/10 M. from US 150 at N. side of Bluegrass Park
way interchange, Nelson County, Kentucky
Photographer Carolyn Murray Wooley
Date Taken December 1983
Negative Location Kentucky Heritage Council
View north rear

Photo # 2

JUN

6 1985





KENTUCKY HERITAGE COUNCIL
STATE HISTORIC PRESERVATION OFFICE
FRANKFORT, KENTUCKY 40601

Name Mattingly House (NE-135)(Early Stone Bldgs.)
9/10 M.from US 150 at N.side of Bluegrass Park
Location way-interchange, Nelson County, Kentucky
Photographer Carolyn Murray Wooley
Date Taken December 1983
Negative Location Kentucky Heritage Council
View west end

Photo # 3

JUN

6

1983





KENTUCKY HERITAGE COUNCIL
STATE HISTORIC PRESERVATION OFFICE
FRANKFORT, KENTUCKY 40601

Name Mattingly House (NE-135)(Early Stone Bldgs.)
9/10 M.from US 150 at N.side of Bluegrass Park
Location way interchange, Nelson County, Kentucky
Photographer Carolyn Murray Wooley
Date Taken December 1983
Negative Location Kentucky Heritage Council
View front door

Photo # 4

JUN 6 1985