



Lithia Park  
59 Winburn Way  
Ashland, Jackson County, Oregon

Elisabeth Walton photo, 1970  
State Historic Preservation Office  
Salem, OR 97310

1 of 16

Carter Memorial Fountain in Ashland  
Plaza at entrance to Lithia Park.  
Ashland Plaza is contiguous with lower  
end of park but is not within park  
boundaries.



Lithia Park  
59 Winburn Way  
Ashland, Jackson County, Oregon

Elisabeth Walton Potter Photo, 1981  
State Historic Preservation Office  
Salem, OR 97310

2 of 16

Lower duck pond and waterfall, looking southeasterly. Also known as Meyer Pond. Developed 1910.



Lithia Park  
59 Winburn Way  
Ashland, Jackson County, Oregon

Elisabeth Walton Potter photo, 1981  
State Historic Preservation Office  
Salem, OR 97310

3 of 16

Looking easterly across lower duck pond toward Elizabethan Stagehouse (1959) of Oregon Shakespearean Festival. South end. Facilities of OSF Association are included in the nominated area. They occupy the historic Chautauqua grounds 1893-1925. Shakespearean theater was launched in the shell of the Chautauqua Auditorium in 1935; shell still stands.



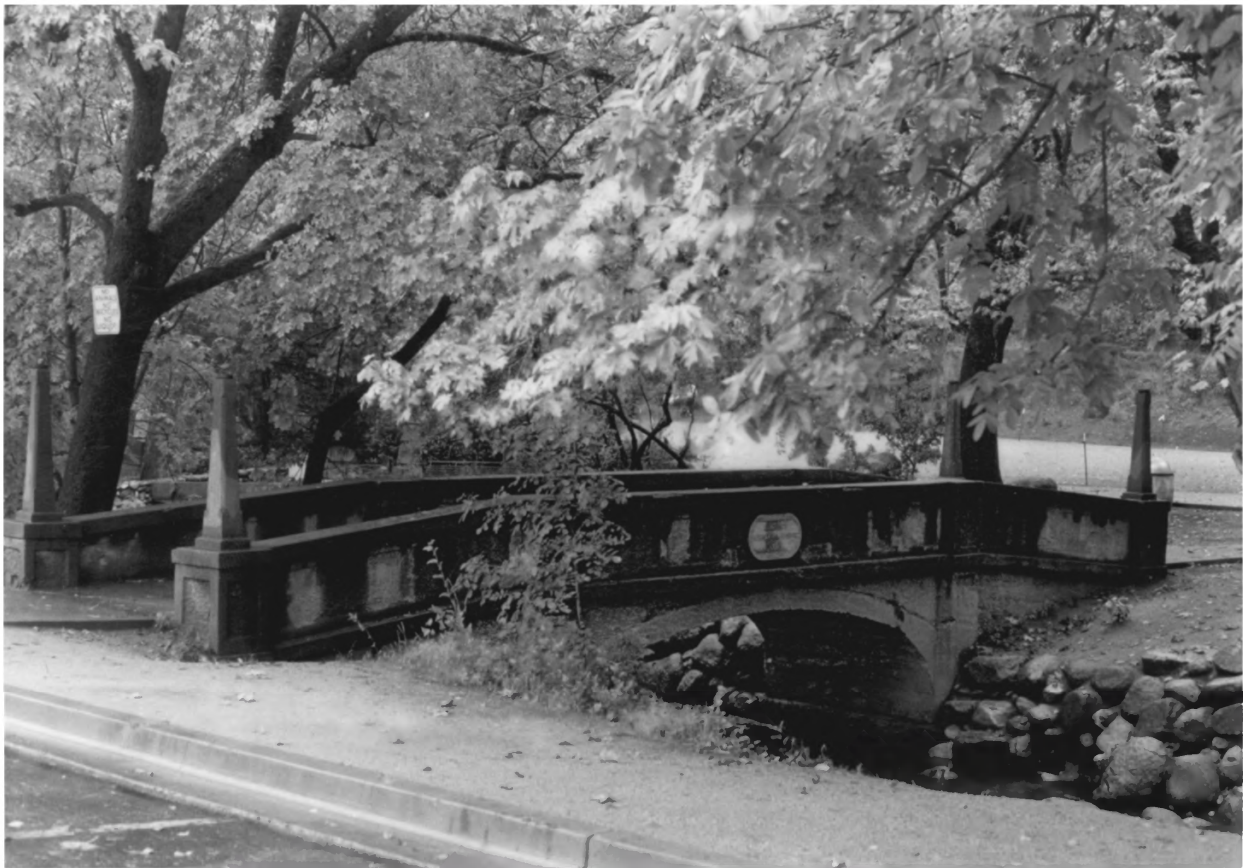
Lithia Park  
59 Winburn Way  
Ashland, Jackson County, Oregon

Elisabeth Walton Potter photo, 1981  
State Historic Preservation Office  
Salem, OR 97310

4 of 16

Looking northeasterly from the west bank of Ashland Creek at steps and boulder-lined embankment. Butler Play Area, 1953, in background.





Lithia Park  
59 Winburn Way  
Ashland, Jackson County, Oregon

Elisabeth Walton Potter photo, 1981  
State Historic Preservation Office  
Salem, OR 97310

5 of 16

Looking northeasterly from Winburn Way  
at concrete bridge with lamp posts  
spanning Ashland Creek near Butler Play  
Area. Bridge dates from 1915.



Lithia Park  
59 Winburn Way  
Ashland, Jackson County, Oregon

Elisabeth Walton Potter photo, 1981  
State Historic Preservation Office  
Salem, OR 97310

6 of 16

Looking southwesterly along planted parkway. Winburn Way forks to the left. Nutley Street gives onto Winburn Way from the right.



Lithia Park  
59 Winburn Way  
Ashland, Jackson County, Oregon

Elisabeth Walton Potter photo, 1981  
State Historic Preservation Office  
Salem, OR 97310

7 of 16

Looking northerly along Winburn Way.  
Rose garden of 1938 is on right. Though  
developed in 1938, the Memorial Rose  
Garden was dedicated in 1959.



Lithia Park  
59 Winburn Way  
Ashland, Jackson County, Oregon

Elisabeth Walton photo, 1970  
State Historic Preservation Office  
Salem, OR 97310

8 of 16

Looking east at rustic , octagonal mineral water station in essentially original condition except for shingle roof cover. Enders Pavilion, 1915.





Lithia Park  
59 Winburn Way  
Ashland, Jackson County, Oregon

Elisabeth Walton Potter photo, 1981  
State Historic Preservation Office  
Salem, OR 97310

9 of 16

Looking east at rustic, octagonal mineral water station after recent improvements, including shake roof with Boston ridges and concrete bases for log posts. Enders Pavilion, 1915.



Lithia Park  
59 Winburn Way  
Ashland, Jackson County, Oregon

Elisabeth Walton Potter photo, 1981  
State Historic Preservation Office  
Salem, OR 97310

10 of 16

Looking north at terrace for Perozzi Fountain, of which only pedestal and basin remain. The fountain, work of the Florentine sculptor Frilli, was acquired

at the Panama-Pacific International Exposition in San Francisco in 1915 by Ashland citizens G. S. Butler and Domingo Perrozi. This formal element, with steps descending to Winburn Way,

was an element of John McLaren's landscape plan of 1914-1915.



Lithia Park  
59 Winburn Way  
Ashland, Jackson County, Oregon

Elisabeth Walton Potter photo, 1981  
State Historic Preservation Office  
Salem, OR 97310

11 of 16

Log American Legion Hall and former Woman's Civic Improvement Clubhouse fronting Winburn Way. Looking north-westerly at south and east elevations. The Ashland Parks and Recreation Commission occupies the shingle-clad bungalow (right), 59 Winburn Way. It was designed for Woman's Civic Club by Frank C. Clark c. 1921. Located west of the park boundary, these buildings are not included in the nominated area.



Lithia Park  
59 Winburn Way  
Ashland, Jackson County, Oregon

Elisabeth Walton Potter photo, 1981  
State Historic Preservation Office  
Salem, OR 97310

12 of 16

Looking east from Winburn Way at Butler  
Memorial Band Shell constructed c. 1949.





Lithia Park  
59 Winburn Way  
Ashland, Jackson County, Oregon

Elisabeth Walton Potter photo, 1981  
State Historic Preservation Office  
Salem, OR 97310

13 of 16

Looking northerly along Winburn Way from point opposite the band shell. The large-scale plantings, including alders, oaks, conifers, madrones, maples and willows, and the parkway concept are based on John McLaren's landscape plan of 1914-1915.



Lithia Park  
59 Winburn Way  
Ashland, Jackson County, Oregon

Elisabeth Walton Potter photo, 1981  
State Historic Preservation Office  
Salem, OR 97310

14 of 16

Looking south from north end of upper  
duck pond with willow-shaded island  
specified in John McLaren's landscape  
plan of 1914-1915. Black Swan Lake.



Lithia Park  
59 Winburn Way  
Ashland, Jackson County, Oregon

Elisabeth Walton Potter photo, 1981  
State Historic Preservation Office  
Salem, OR 97310

15 of 16

Looking south along west bank of upper  
duck pond, showing boulder-lined  
embankment. Black Swan Lake.



Lithia Park  
59 Winburn Way  
Ashland, Jackson County, Oregon

Elisabeth Walton Potter photo, 1981  
State Historic Preservation Office  
Salem, OR 97310

16 of 16

Looking northwesterly from east bank of upper duck pond with willow-shaded island specified in John McLaren's landscape plan of 1914-1915.