




PHOTO COURTESY OF HELEN WOODROOFE

Steve Randolph
Planning Coordinator
UMATILLA COUNTY COURTHOUSE
216 S.E. 4th
PENDLETON, OREGON 97801

WATTS-ADAMS HOUSE
ATHENA, OREGON *UMATILLA COUNTY*
PHOTO #1 *OF 13*



WINTER SCENE, WEST ELEVATION
circa 1930 (*HISTORIC VIEW*)
from family Christmas card

RETURN POSTAGE GUARANTEED



Steve Randolph
Planning Coordinator
UMATILLA COUNTY COURTHOUSE
216 S.E. 4th
PENDLETON, OREGON 97801

WATTS-ADAMS HOUSE
ATHENA, OREGON *UMATILLA COUNTY*
PHOTO #2 OF 13

VIEW FROM SOUTHWEST, July 1987
Neg# WE04930 Frame #1

RETURN POSTAGE GUARANTEED



Steve Randolph
Planning Coordinator
UMATILLA COUNTY COURTHOUSE
216 S.E. 4th
PENDLETON, OREGON 97801

WATTS-ADAMS HOUSE
ATHENA, OREGON *UMATILLA COUNTY*
PHOTO #3 *OF 13*

ENTRANCE, July 1987
Neg# WE04930 Frame #3

RETURN POSTAGE GUARANTEED



Steve Randolph
Planning Coordinator
UMATILLA COUNTY COURTHOUSE
216 S.E. 4th
PENDLETON, OREGON 97801

WATTS-ADAMS HOUSE
ATHENA, OREGON *UMATILLA COUNTY*
PHOTO #4 OF 13

VIEW FROM SOUTHEAST *JULY 1987*
Neg# WE04930 Frame#5

RETURN POSTAGE GUARANTEED



Steve Randolph
Planning Coordinator
UMATILLA COUNTY COURTHOUSE
216 S.E. 4th
PENDLETON, OREGON 97801

WATTS-ADAMS HOUSE
ATHENA, OREGON *UMATILLA COUNTY*
PHOTO #5 *OF 13*

EAST FACADE,
Neg#WE04939

July 1937
Frame#6

RETURN POSTAGE GUARANTEED



Steve Randolph
Planning Coordinator
UMATILLA COUNTY COURTHOUSE
216 S.E. 4th
PENDLETON, OREGON 97801

WATTS-ADAMS HOUSE
ATHENA, OREGON *UMATILLA COUNTY*
PHOTO #6 OF 13

LIVING ROOM from entry
July 1987
Neg#WE04930 Frame#16

RETURN POSTAGE GUARANTEED



Steve Randolph
Planning Coordinator
UMATILLA COUNTY COURTHOUSE
216 S.E. 4th
PENDLETON, OREGON 97801

WATTS-ADAMS HOUSE
ATHENA, OREGON *UMATILLA COUNTY*
PHOTO #7 *UF 13*

DINING ROOM
Neg#WE04930

July 1987
Frame#19

RETURN POSTAGE GUARANTEED



Steve Randolph
Planning Coordinator
UMATILLA COUNTY COURTHOUSE
216 S.E. 4th
PENDLETON, OREGON 97801

WATTS-ADAMS HOUSE
ATHENA, OREGON *UMATILLA COUNTY*
PHOTO #8 *OF 13*

BREAKFAST ROOM from dining rm
July 1987
Neg#WE04930 Frame#20

RETURN POSTAGE GUARANTEED



Steve Randolph
Planning Coordinator
UMATILLA COUNTY COURTHOUSE
216 S.E. 4th
PENDLETON, OREGON 97801

WATTS-ADAMS HOUSE
ATHENA, OREGON *UMATILLA COUNTY*
PHOTO #9 OF 13

LANTERN IN ENTRY, July 1987
Neg#WE04930 Frame#22

RETURN POSTAGE GUARANTEED

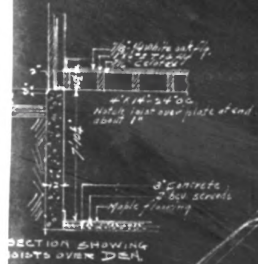


Steve Randolph
Planning Coordinator
UMATILLA COUNTY COURTHOUSE
216 S.E. 4th
PENDLETON, OREGON 97801

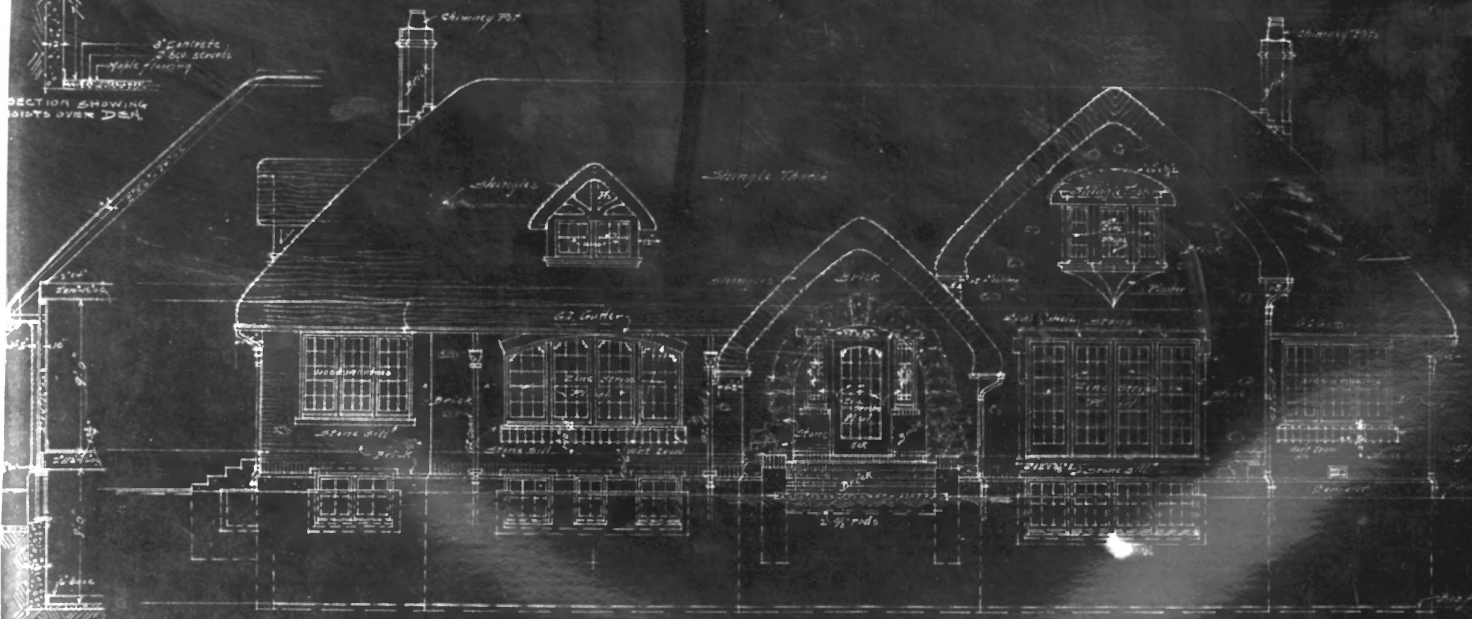
WATTS-ADAMS HOUSE
ATHEIA, OREGON *UMATILLA COU*
PHOTO #10 *OF 13*

STAINED GLASS IN ENTRY
July 1987
Neg# WE04930 Frame #18

RETURN POSTAGE GUARANTEED



SECTION SHOWING
ROOF OVER DEEL



SECTION OF WALL
1/4\"/>

RESIDENCE
FOR
MR. & MRS. M. L. WATTS
ATHENA OREGON

FRONT ELEVATION
Scale 1/4\"/>

SCALE	1/4" = 1'-0"	DATE	9/12/26
COM.	DRAWN BY	TRACED BY	SHEET
109			4
RAYMOND W. HATCH			
ARCHITECT			
PORTLAND OREGON			

Steve Randolph
Planning Coordinator
UMATILLA COUNTY COURTHOUSE
216 S.E. 4th
PENDLETON, OREGON 97801

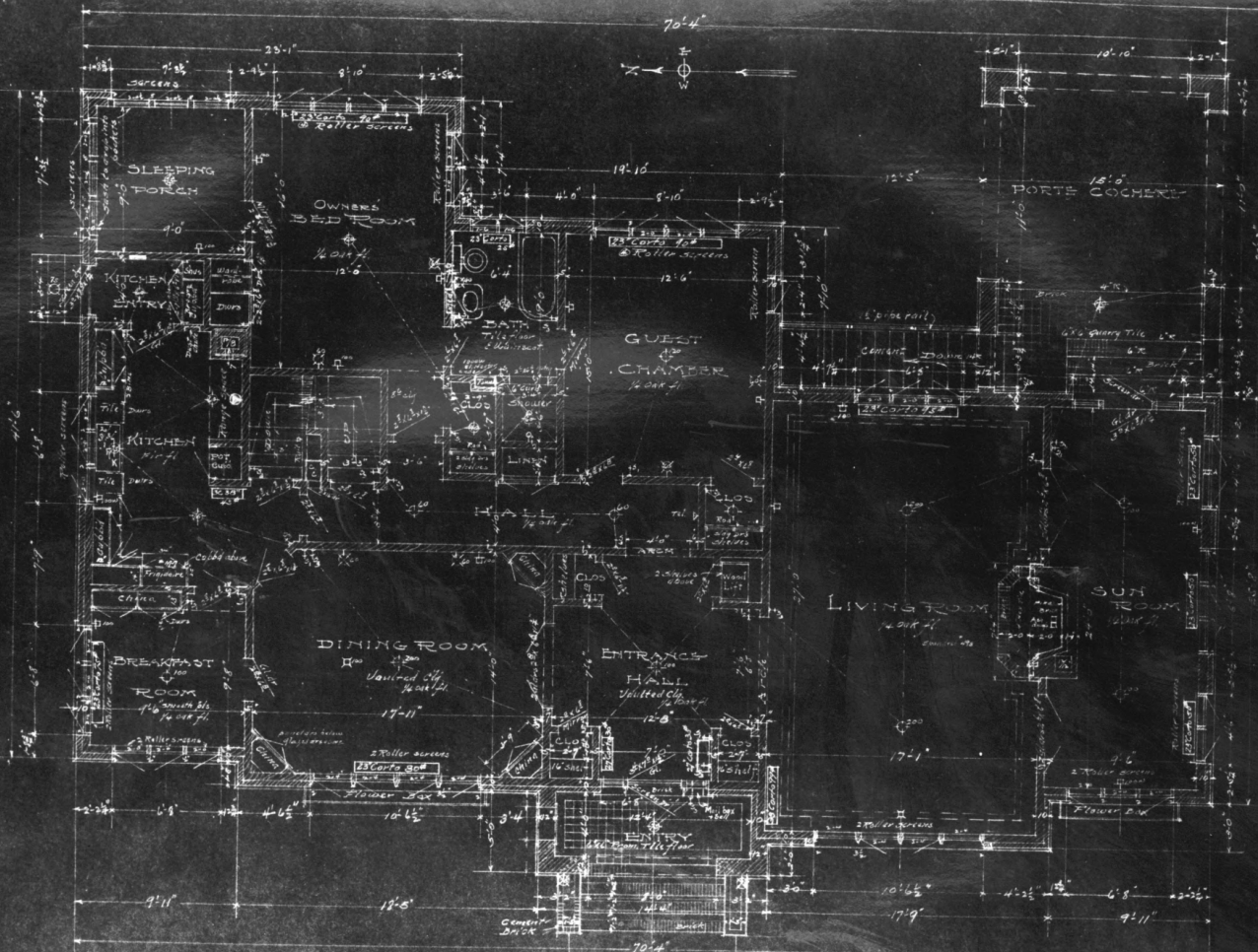
MR & MRS M.L. WATTS HOUSE
ATHENA OREGON

UMATILLA COUNTY

FRONT ELEVATION

11 OF 13

RETURN POSTAGE GUARANTEED



RESIDENCE
 MR. & MRS. M. L. WATTS
 ATHENA OREGON

FIRST FLOOR PLAN
 Scale 1/8" = 1'-0"

SCALE 1/8" = 1'-0" DATE 3-2-21
 CCM. DRAWN BY T.W.S. SHEET
 109 TRACED BY 2
 RAYMOND W. HATCH
 ARCHITECT
 PORTLAND, OREGON

Steve Randolph
Planning Coordinator
UMATILLA COUNTY COURTHOUSE
216 S.E. 4th
PENDLETON, OREGON 97801

MR & MRS M.L. WATTS HOUSE
ATHENA OREGON

UMATILLA COUNTY

FIRST FLOOR PLAN

12 OF 13

RETURN POSTAGE GUARANTEED



RESIDENCE
 MR. & MRS. M. LAWITS
 ATHENA OREGON

BASEMENT FLOOR PLAN
 Scale 1/4" = 1'-0"

SCALE 1/4" = 1'-0" DATE 3-3-20
 COM. DRAWN BY T.W.H. SHEET 103
 TRACED BY 1
 RAYMOND W. HATCH
 ARCHITECT
 PORTLAND, OREGON

Steve Randolph
Planning Coordinator
UMATILLA COUNTY COURTHOUSE
216 S.E. 4th
PENDLETON, OREGON 97801

MR. & MRS. M.L. WATTS HOUSE
ATHENA OREGON

UMATILLA COUNTY

BASEMENT FLOOR PLAN

13 OF 13

RETURN POSTAGE GUARANTEED