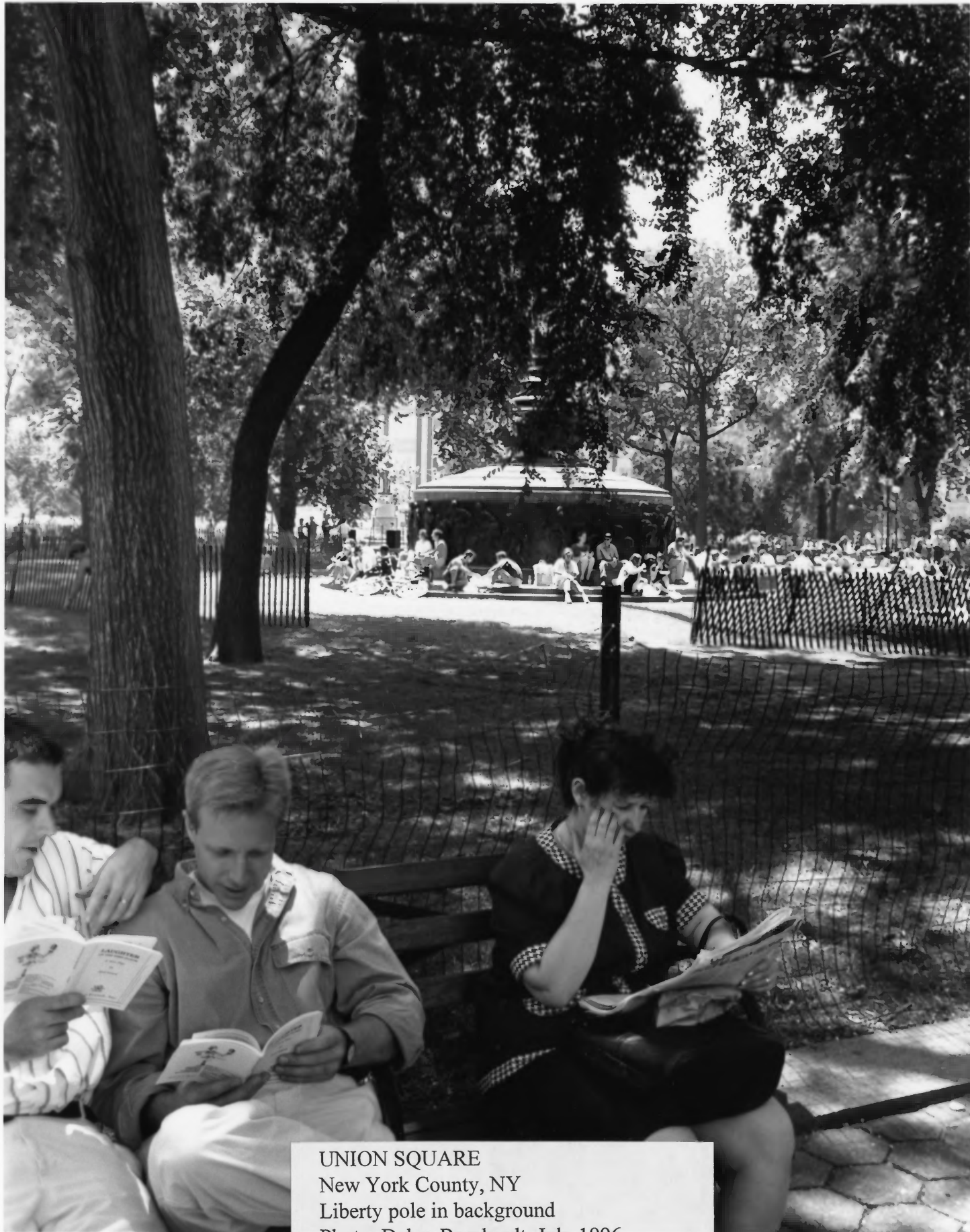


UNION SQUARE
New York County, NY
Aerial view facing south (Pavilion in foreground)
Photo: Debra Bernhardt, August 1997



UNION SQUARE
New York County, NY
From southeast corner looking NE
Photo: Debra Bernhardt, July 1996



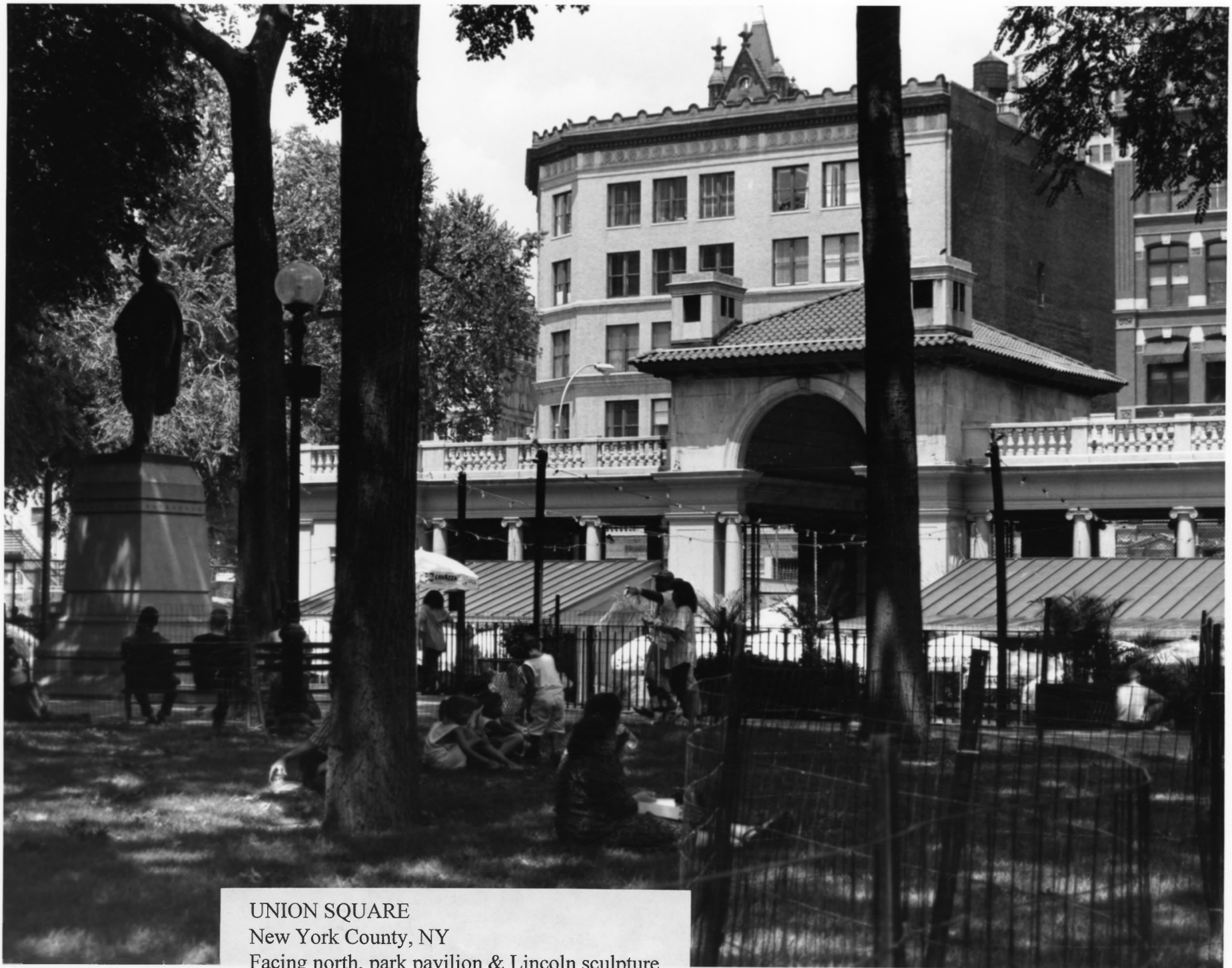
UNION SQUARE
New York County, NY
Liberty pole in background
Photo: Debra Bernhardt, July 1996



UNION SQUARE
New York County, NY
Aerial view of Union Square
Photo: John Bond, 1995



UNION SQUARE
New York County, NY
Washington sculpture
Photo: John Bond, 1995



UNION SQUARE

New York County, NY

Facing north, park pavilion & Lincoln sculpture

Photo: Debra Bernhardt, July 1996



TIME
MOVERS

TIME
MOVING · STORAGE

5979 M
D-5

TOYS 'R US
COMING SOON · COMING SOON · COMING SOON · COMING SOON





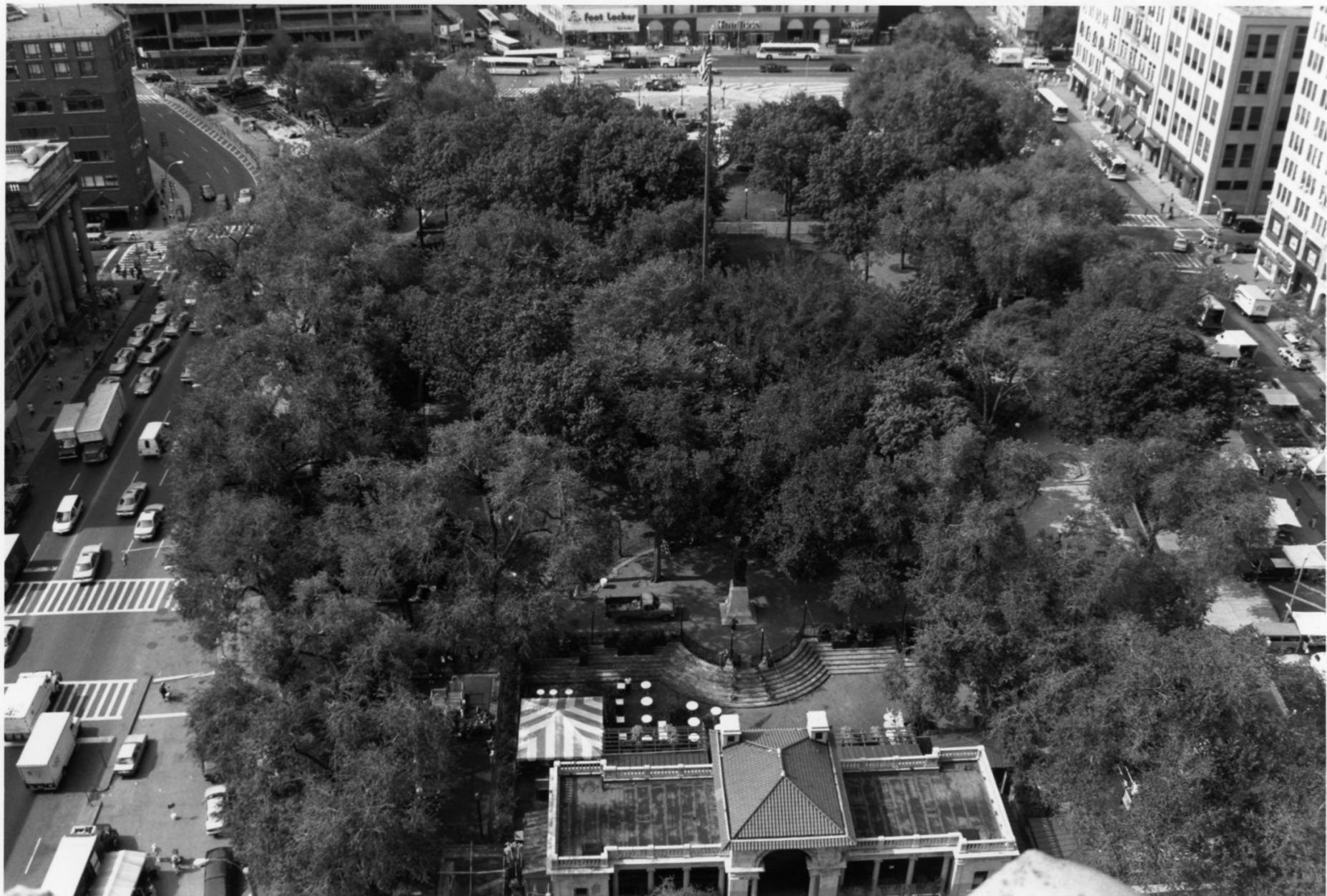
Union Square, July 1996.

Farmers Market, Union Square West facing south.



Union Square, July 1996

Northern walkway facing west.



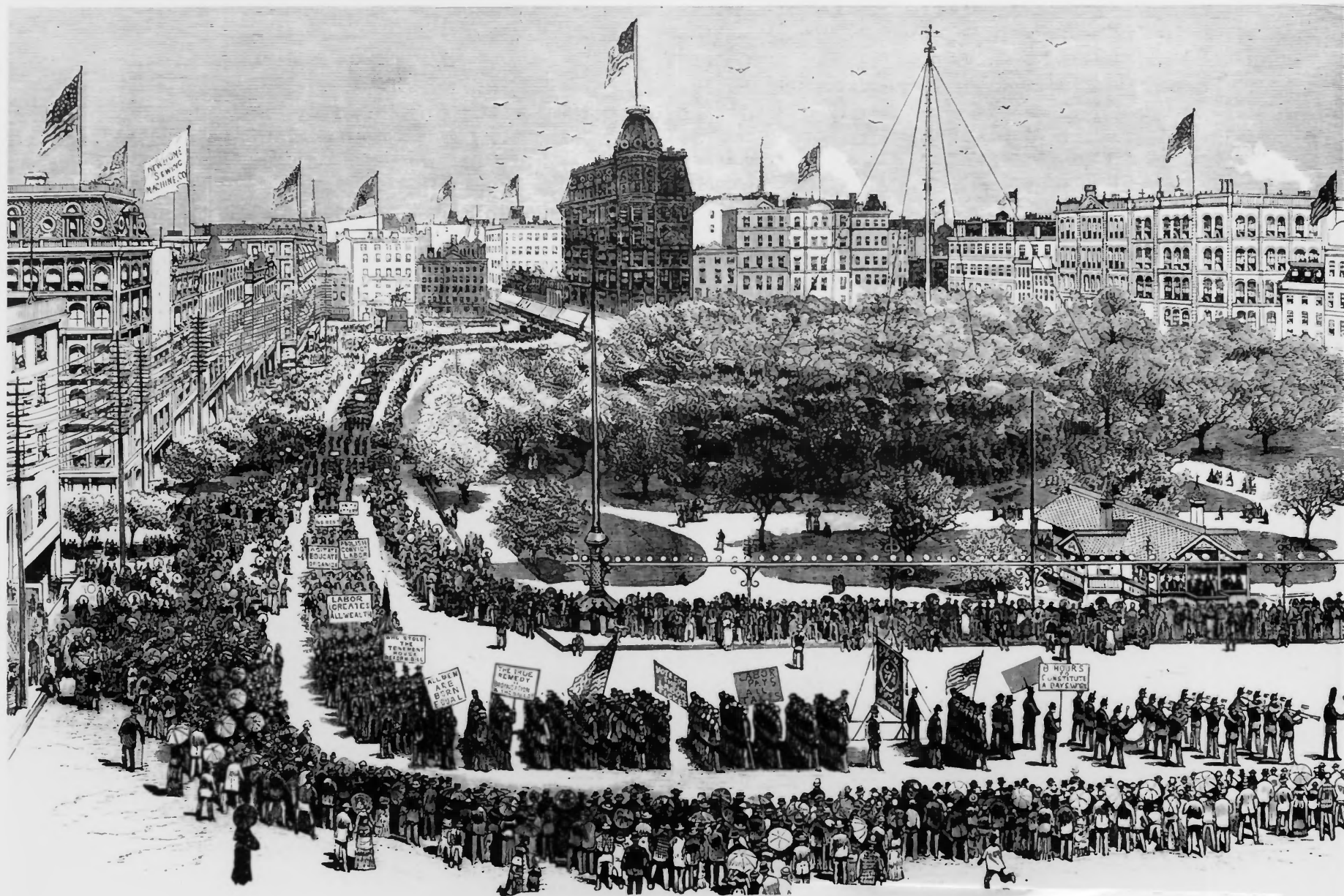
Union Square aerial view taken from 200 Park Ave. South & 17th Street facing south, bounded by Broadway on the left and Union Square West on the right.

Photo by Alberta M. Burhardt
189 Dean Street, Brooklyn, NY 11217



Aerial view of Union Square taken from 200 Park Ave South + 17th Street,
facing south. 9/97

Photo by Albra C. Bernhardt
189 Klean Street, Brooklyn, NY 11217



UNION SQUARE
New York County, NY
From *Frank Leslie's Illustrated Newspaper*
September 16, 1882