


MOUNT AUBURN,
 BY ALEX. WADSWORTH.

Nov. 1851.
 Second Edition. May 1832.
London: Lithography Division.

Reference.
 The dotted lines show the proposed Paths & Avenues, also the diminished size of the Ponds.
 Scale in Rods.





James Smillie.

R. Hushelwood

MOUNT AUBURN CEMETERY

Cambridge, Massachusetts

"Lowell Monument" (Willow Avenue)

engraving from Cornelia W. Walter, *Mount Auburn: Illustrated in a Series of Views* by

James Smillie, R. Martin, New York, 1847



Drawn & Engraved by James Smalbe

Entrance of Mount Auburn
Cemetery, 1847 engraving



MOUNT AUBURN CEMETERY
Cambridge, Massachusetts
Mount Auburn Entrance
Photo by Janet Heywood, 1999

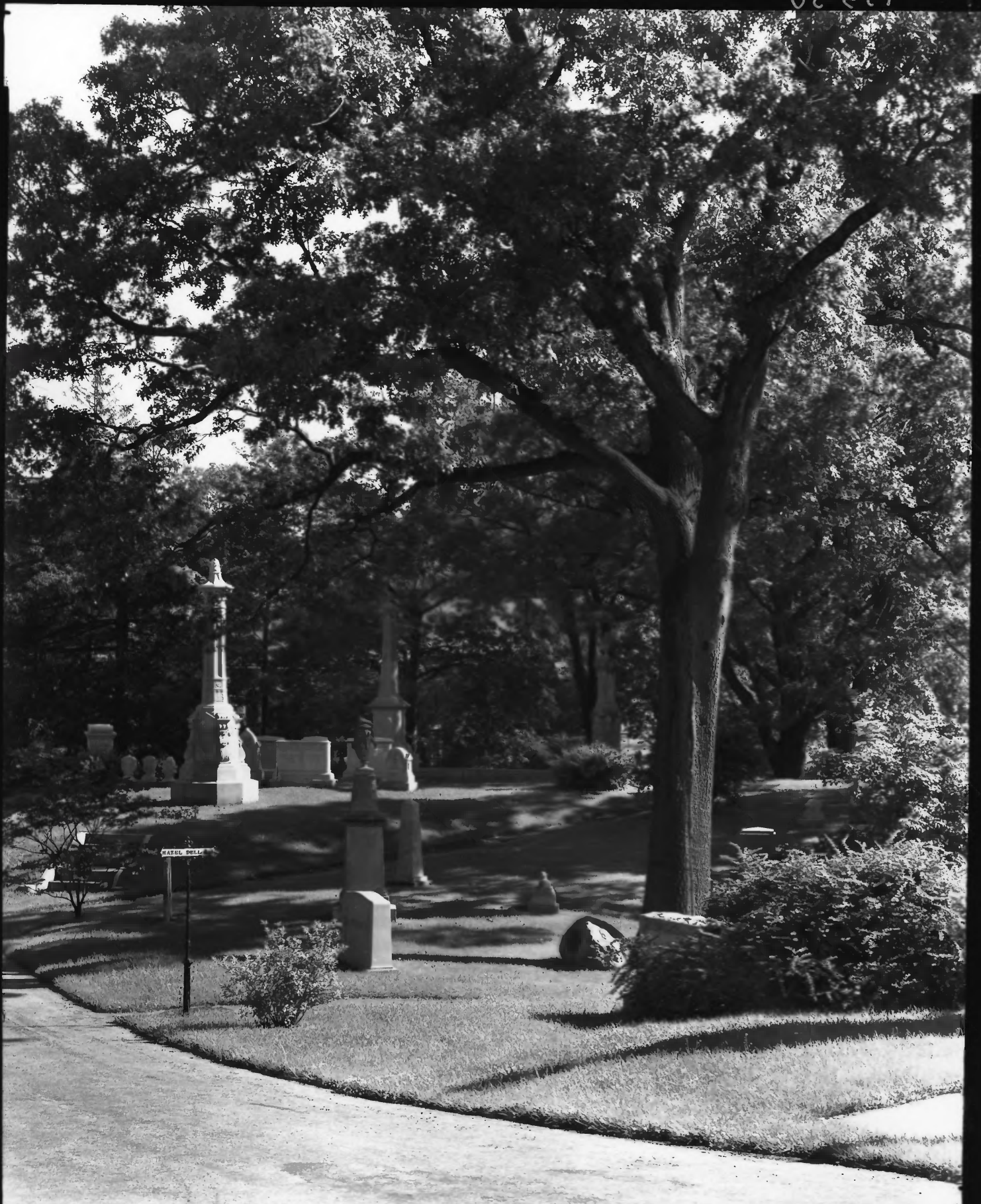




YSP01



07 521





MOUNT AUBURN CEMETERY
Cambridge, Massachusetts
Lawn Avenue
Photo by Arthur C. Haskell, c. 1950

TO THE MEMORY OF
EDWARD EVERETT

Born 11 April 1794

Died 15 January 1865

AND OF

CHARLOTTE GRAY EVERETT

Born 4 November 1800

Died 2 July 1859

THIS MONUMENT

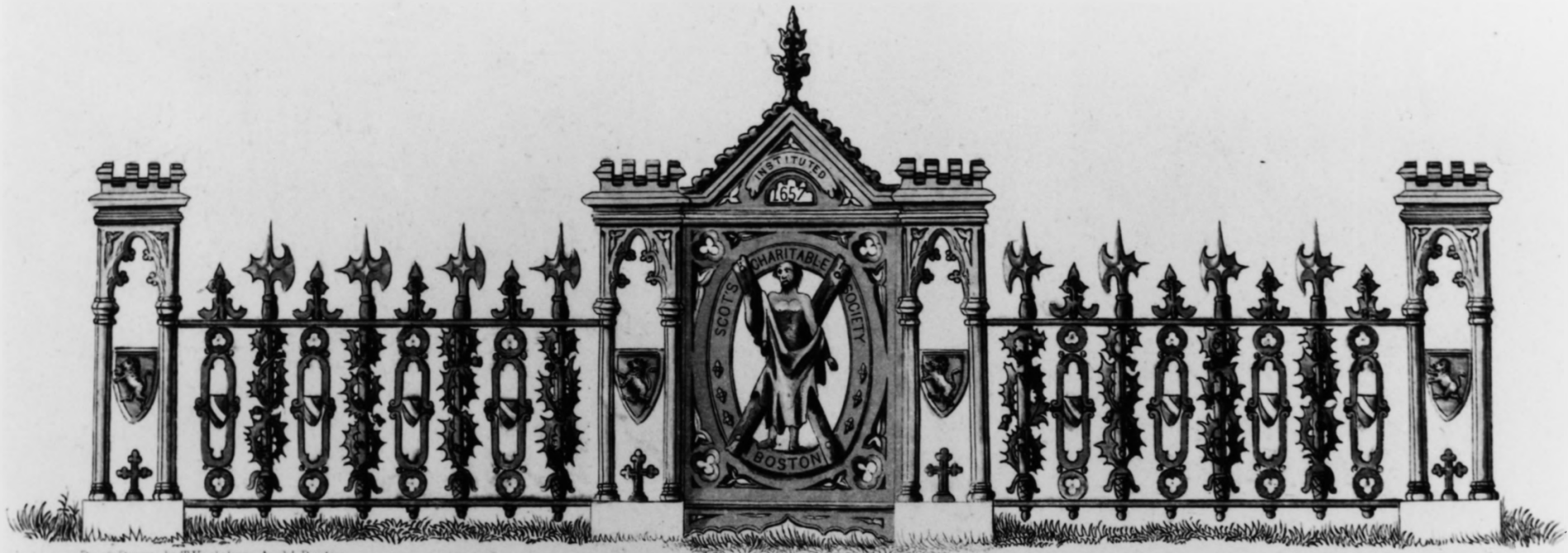
IS ERECTED

BY THEIR

SURVIVING CHILDREN



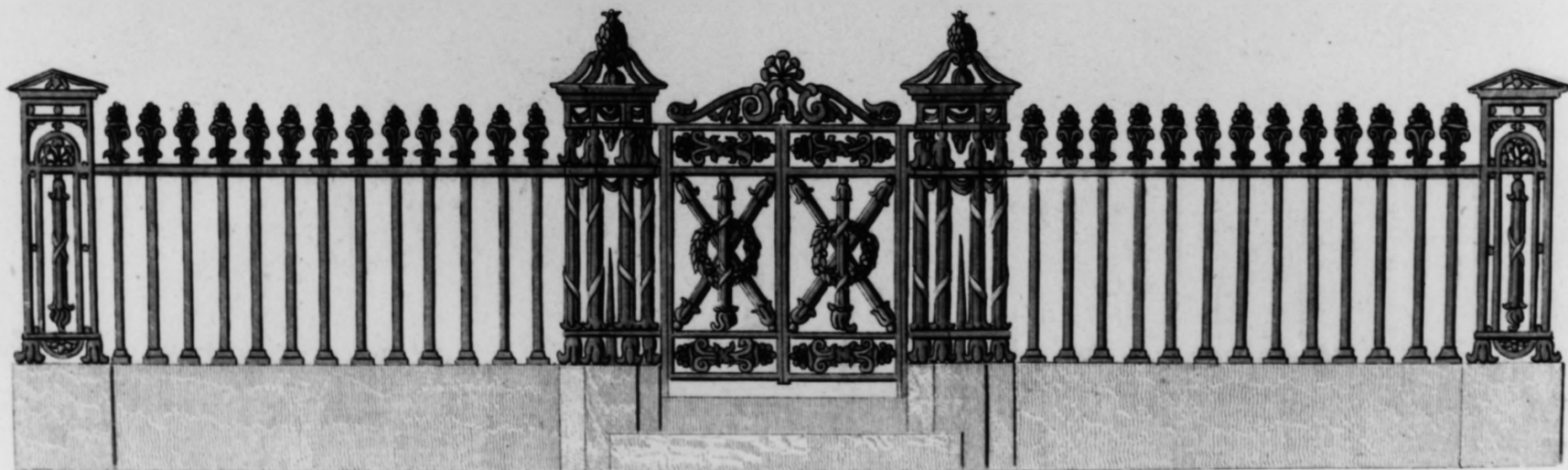
CHARLES SUMNER



Des & Drawn by T. Voelckers Arch' Boston.

GATE AND FENCE OF SCOTT'S CHARITABLE SOCIETY.

Entered according to Act of Congress in the year 1848 by R. Martin in the Clerk's Office of the District Court of the Southern District of New-York.



Des & Drawn by T. Voelckers Arch' Boston.





MOUNT AUBURN CEMETERY
Cambridge, Massachusetts
Washington Tower
Photo by Janet Heywood, 1999



MOUNT AUBURN CEMETERY

Cambridge, Massachusetts

Hillside along Bellwort Path, Family lots of Margaret Fuller and Charles Bulfinch

Photo by Janet Heywood, 1999

