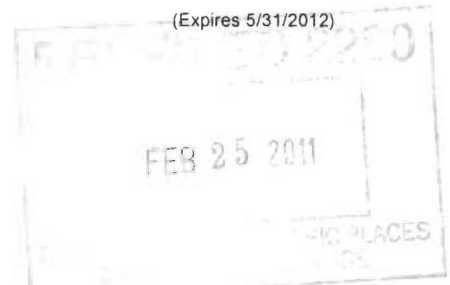


United States Department of the Interior
National Park Service

183



National Register of Historic Places Registration Form

This form is for use in nominating or requesting determinations for individual properties and districts. See instructions in National Register Bulletin, *How to Complete the National Register of Historic Places Registration Form*. If any item does not apply to the property being documented, enter "N/A" for "not applicable." For functions, architectural classification, materials, and areas of significance, enter only categories and subcategories from the instructions. Place additional certification comments, entries, and narrative items on continuation sheets if needed (NPS Form 10-900a).

1. Name of Property

historic name Missoula Downtown Historic District Boundary Increase

other names/site number West Side Railroad District

2. Location

street & number This addition is bounded to the west and north by the Montana Rail Link and BNSF railway, and to the south by Toole-Railroad- Alder Streets. The entire district is roughly bounded by the Northern Pacific railroad tracks to the north, Montana Rail Link to the northwest, the Clark Fork River to the south, and Madison Street to the east. not for publication

city or town Missoula vicinity

state Montana code MT county Missoula code 063 zip code 59802

3. State/Federal Agency Certification

As the designated authority under the National Historic Preservation Act, as amended,
I hereby certify that this x nomination request for determination of eligibility meets the documentation standards for registering properties in the National Register of Historic Places and meets the procedural and professional requirements set forth in 36 CFR Part 60.

In my opinion, the property x meets does not meet the National Register Criteria. I recommend that this property be considered significant at the following level(s) of significance:

 national statewide x local

Mark F. Baumer / SAPO 2/18/2011
Signature of certifying official/Title Date

MONTANA STATE HISTORICAL PRESERVATION OFFICE
State or Federal agency/bureau or Tribal Government

In my opinion, the property meets does not meet the National Register criteria.

Signature of commenting official Date

Title State or Federal agency/bureau or Tribal Government

4. National Park Service Certification

I hereby certify that this property is:

entered in the National Register determined eligible for the National Register

 determined not eligible for the National Register removed from the National Register

 other (explain):

per Edson H. Beall 4.8.11
Signature of the Keeper Date of Action

Missoula Downtown Historic District Boundary Increase
 Name of Property

Missoula, Montana
 County and State

5. Classification

Ownership of Property
 (Check as many boxes as apply.)

- private
- public - Local
- public - State
- public - Federal

Category of Property
 (Check only one box.)

- building(s)
- district
- site
- structure
- object

Number of Resources within Property
 (Do not include previously listed resources in the count.)

Contributing	Noncontributing	
33	32	buildings
		district
		site
		structure
1		object
34	32	Total

Name of related multiple property listing
 (Enter "N/A" if property is not part of a multiple property listing)

Historic Resources of Missoula MPD (1990)
 Missoula Downtown Historic District (2009)
 Missoula Downtown Historic District Addendum (2011)

Number of contributing resources previously listed in the National Register

490

For Missoula Use Only: Total number of resources in Missoula Downtown HD. Resource count includes resources from *Missoula Downtown Historic District* nomination (2009), *the Missoula Downtown Historic District Addendum* (2011) and this *Missoula Downtown Historic District Boundary Increase*.

Contributing	Noncontributing	Total Resources
525	130	655

6. Function or Use

Historic Functions
 (Enter categories from instructions.)

COMMERCE/TRADE: warehouse, mixed-use
 DOMESTIC: single dwelling, multiple dwelling
 TRANSPORTATION: rail-related
 AGRICULTURE/SUBSISTENCE: storage

Current Functions
 (Enter categories from instructions.)

COMMERCE/TRADE: warehouse, mixed-use
 DOMESTIC: single dwelling, multiple dwelling
 TRANSPORTATION: rail-related

7. Description

Architectural Classification
 (Enter categories from instructions.)

No Style: front gable
 LATE 19TH AND EARLY 20TH CENTURY
 AMERICAN MOVEMENTS: Bungalow/Craftsman
 Western Commercial
 LATE VICTORIAN: Queen Anne Revival, Western
 Commercial, Eclectic Victorian

Materials
 (Enter categories from instructions.)

foundation: STONE, CONCRETE
 BRICK, WOOD, METAL, STUCCO,
 walls: GLASS
 OTHER: asphalt/composite, METAL,
 roof: WOOD: shingle
 other:

Missoula Downtown Historic District Boundary Increase

Missoula, Montana

Name of Property

County and State

Narrative Description

(Describe the historic and current physical appearance of the property. Explain contributing and noncontributing resources if necessary. Begin with a **summary paragraph** that briefly describes the general characteristics of the property, such as its location, setting, size, and significant features.)

Summary Paragraph

This is a boundary increase to the existing Missoula Downtown Historic District listed in the National Register in 2009 and the Missoula Downtown Historic District Addendum of 2011. This increase is to complete the Missoula Downtown Historic District by including properties that were not included in the original survey and nomination. The area of the boundary increase was not included in the original nomination due to financial constraints; there was simply not enough money available to include it at the time the original nomination was prepared. The boundary increase is 17.9 acres in area and includes 41 properties. Several of the properties contain multiple buildings. This increase enhances the Missoula Downtown Historic District by adding thirty four contributing resources around the Bitter Root Branch Railroad (24MO718) and the Northern Pacific/BNSF Railroad (24MO319), and by including primary resources associated with railroad transportation, like masonry warehouse buildings and the Ceretana Grain Elevator. The Bitter Root Branch Railroad and the BNSF Railroad form significant boundaries to other neighborhoods in Missoula's city center. The railroads also connect specific railroad transportation related storage facilities on both sides of the tracks, like 806 West Spruce and 725 West Alder. For a complete description of the historic district, please see *Missoula Downtown Historic District*, NRHP nomination form (listed August 21, 2009, NR #07000647) and *Missoula Downtown Historic District Addendum* (listed February 7, 2011, NR#10001206).

The city of Missoula is located in the west-central part of Montana and is the hub of five valleys: the Clark Fork, Bitterroot, Big Blackfoot, Grant Creek and Rattlesnake. The Clark Fork River runs through the center of Missoula and forms the southern boundary of the older historic core, with the Northern Pacific Railroad (BNSF/Rail-Link) tracks forming the northern boundary of the historic district. Missoula is the county seat for Missoula County and is the largest urban center of western Montana.

Narrative Description

Boundary increase to the Missoula Downtown Historic District

This is a boundary increase to the existing Missoula Downtown Historic District listed in the National Register in 2009 and the Missoula Downtown Historic District Addendum of 2011. This increase is to complete the Downtown Historic District by including properties not included in the original survey because of financial constraints at the time of the original survey and nomination. This increase completes the district by adding sites surrounded by the Bitter Root Branch Railroad and the Northern Pacific/BNSF Railroad, and by including some primary resources associated with railroad transportation, like masonry warehouse buildings and the Ceretana Grain Elevator. For a complete description of the historic district, please see *Missoula Downtown Historic District* National Register form (listed August 21, 2009) and *Missoula Downtown Historic District Addendum* (listed February 7, 2011, NR#10001206). This boundary increase is 17.9 acres in area, and is comprised of 41 properties which include 34 contributing and 32 noncontributing resources. Several of the properties contain multiple buildings, which accounts for the total number of contributing and noncontributing being fifty percent greater than the number of lots. These properties with outbuildings are important to the overall integrity of the neighborhood, and express the historic texture and materials of a working class "railroad district. Most of the small auxiliary structures are either storage or workshop wooden sheds not associated with the automobile.

The original Downtown Missoula Historic District (NRHP 2009) encompasses 52 full and four partial blocks, and includes the East Pine Street Historic District (24MO476), which is encompassed by the downtown commercial and residential core. The area of the boundary increase adds an additional one full and seven partial blocks. The existing (original) downtown district (and associated addendum from 2011) contains a total of 589 buildings, objects and sites that include primary buildings and structures and auxiliary buildings, most of which are sheds and garages associated with the individually eligible properties.

The Bitter Root Branch of the Northern Pacific Railroad marked the western edge for dense, small lot, residential development in the immediate area until shortly after 1902. The 1902 Sanborn map, shows the 600 Block of Toole Avenue built up by 1902, with ten units on eleven platted lots per block – a dense pattern of development for Missoula, but common in railroad neighborhood contexts in Missoula. Residential development was relatively dense along the 500-700

Missoula Downtown Historic District Boundary Increase

Missoula, Montana

Name of Property

County and State

blocks of Toole, and the south side of the 700 block of Cooper Street, but was sparse along the blocks further east of the spur. Although residential development was accelerated by the construction of the railroad, major industrial development didn't come to the area until after 1902, with only the Missoula Iron Works operating along the northern end of the Bitter Root Branch.

Between 1902 and 1912, an industrial boom hit the neighborhood and almost all of the land along the railroad was developed during this period for railroad transportation based warehouses, with small lot residences for workers in the adjacent blocks. Along with the expansion of the Missoula Iron Works, the Big Blackfoot Milling Company opened their lumber and coal yard, which ran along the north side of the 500 and 600 blocks of Toole Avenue, and the 700 block of Cooper Street. The twenty-five foot wide wooden "flat arch" gateway into the old Anaconda Company lumber yard - a contributing object at 506 Toole Avenue - is a well-worn relic of this early industrial period. Additional companies either moved into the area or expanded during this time, with new construction including shipping and receiving buildings, lumber, produce, furniture, and hay warehouses, a cold storage building, and Price and Henley's flour warehouse, which was replaced by the Ceretana Feeds building complex at 801 Sherwood Street. Along with the railroad, these early industries set the tone for the neighborhood, with a majority of the businesses operating out of the same location for many years. Industry and railroad employees often resided in the boundary increase area.

Residential and commercial lots, as well as the buildings constructed on those lots, continue to serve their original purpose. Residential blocks have had little or no infill from commercial structures over time and visa versa. From 1960 to 1990, the area experienced a turnover in some of the older commercial buildings and new commercial and industrial structures were constructed, such as the warehouses along the 700 block of Holmes Street and the storage facilities on the north side of the 700 block of Cooper. These buildings replaced older commercial structures associated with the Interstate Lumber Company. Additionally, adaptive reuse of historic structures was also characteristic of the area during this time, like renovating the Missoula Mercantile's furniture warehouse (c. 1893-1902) at 725 West Alder Street into the Warehouse Mall, and adapting the Missoula Mercantile grain elevator building complex (c. 1929) for multi-business, non profit and artisan use. This is also the case for the warehouses at 806 West Spruce (1932-34), which began as grocery cold storage from rail freight. More recently, the Northern Pacific depot freight warehouse (c. 1947) on the 300 block of Railroad Street was converted and rehabilitated into office space.

There is no evidence of significant turnover in older residential buildings in the area except on the 600 block of Toole Avenue, where the Sanborn Fire Insurance maps indicate several buildings, like 704 Toole, have been modified over time. The structures generally match the scale, massing, and gable-front form of the homes in the adjacent part of the neighborhood which is already in the Downtown Historic District.

A majority of the lots throughout the boundary increase measure 30 feet wide and 130 feet deep. The setbacks for the residential structures are consistent along Toole Avenue, coincident with the general time period of construction. The residential buildings are typically modest in size and architectural detailing, have one or two bedrooms, and because they are located on narrow lots, are closely grouped. Similar to small company towns, small dwellings were often constructed at the rear of the lot by the alley. This trend continued to the present day. Perhaps because they are closely grouped, tall privacy fences prevail along the back of the lots. Fences, auxiliary buildings along the alleys, and the proximity of neighboring structures occasionally limited in-depth architectural documentation of buildings.

None of the buildings are known to have been designed by professional architects, and most were probably constructed by local builders and contractors using local materials brought in on the railroads. The housing styles reflect the era of their construction, with pre-1900 houses exhibiting some Queen Anne revival influences that may include a wraparound porch, arched windows or turned porch columns. A majority of those constructed after the turn of the century favored the front-gable, with a few favoring the hipped-roof or cross-gable. The prominent massing and configuration of the residences is typical throughout the district increase area. The front gabled cottage, either one- or 1½-story, with front entry predominates. Not all, but most, originally had front porches - some full-width and some at the entry only. This building format was common to the 1950s, when simple ranch houses were added to the neighborhood, again illustrating the strong impact the narrow lots had on style and architectural expression. The major differentiator of the 1950s homes is the lower slope of the roofs and, in some cases, the horizontal geometry of the windows. As stated earlier, the residential pattern is narrow lots, 30 feet wide by 130 feet deep, with mostly vernacular or "no style residences" that are associated with working class (blue collar) neighborhoods.

Missoula Downtown Historic District Boundary Increase

Missoula, Montana

Name of Property

County and State

Auxiliary buildings along the alleys have been preserved by their owners, and many are associated with general storage rather than with the automobile. A majority of the residents prefer street parking rather than constructing garages on the back of the lot or using the existing auxiliary buildings for parking.

This boundary increase is a small railroad district addition to the Missoula Downtown district, and contains a "railroad" landscape pattern similar in many ways to the Northside Railroad Historic District (24MO547) to the Northeast. The majority of the buildings located throughout the boundary increase are residential. A small number of commercial buildings exist along the railroad, defining the north and west boundary of the addition. This boundary increase includes fifty one residentially oriented buildings, thirteen commercial buildings, one mixed-use building and one arch (a contributing object). Some of the parcels are vacant, or within railroad and street right-of-ways. Sixty of the buildings and the arch are located in the School Addition (1891), four are located in the W.J. McCormick Addition (1899) and one is in the C.P. Higgins Addition (1889). Thirty four resources are contributing elements and thirty-two are noncontributing elements in this boundary increase. With the inclusion of this boundary increase, the total number of contributing buildings, objects and sites within the Missoula Downtown Historic District increases to 524 resources and the total number of contributing and noncontributing resources increases to 655. With the inclusion of this boundary increase, 80% of all resources are contributing elements in the Missoula Downtown Historic District.

This boundary increase completes a coherent historic district from railroad corridors to the north and northwest to the Clark Fork River to the south. The buildings retain a majority of their integrity, which includes window and door placements, and the preservation of porches and rear additions. Of these, most are front-and-rear-gable, single-story residences with little ornamentation. Some, like the corner of Toole and Milton, retain Queen Anne features, along with a four column front porch, and a half second floor. Most of the residential structures are sited tightly on their 30-foot wide lots, typical to working class neighborhoods along the railways. The integrity of location and setting is good and includes the preservation of auxiliary buildings, such as garages and sheds along alleys. The overall integrity provides a strong visual cohesion to the boundary increase area. Noncontributing elements are generally listed as such because of their relatively recent construction or modification date, or because they were moved from their original location. Some noncontributing buildings are actually 100 years old, but rehabilitation and re-cladding, removed and altering character-defining features, like openings and clapboard or lap siding. The fact there are only two more contributing resources than noncontributing resources in the boundary increase area does not affect the spatial character of the physical landscape, nor does it affect the overall character of the Missoula Downtown Historic District. The discrepancy in numbers between contributing and noncontributing features would appear less dramatic if the area of the boundary increase was inventoried and included within the original Missoula Downtown Historic District in 2009 as originally planned; its exclusion was a consequence of a lack of funding.

A majority of the commercial buildings in the boundary increase area are utilitarian-industrial types with shallow pitch, flat or shed roofs that historically and/or currently serve the purpose of storing and distributing goods delivered by rail or truck. The area's development is associated with Missoula's railroad boom and some are among the earliest commercial and residential buildings constructed in the city. The completion of the Northern Pacific Railroad in 1883 and the southbound rail line to the Bitter Root Valley in 1887 spurred development along both corridors. Numerous industries and warehouses were constructed along the tracks, many of which, like the flour warehouses and grain elevator at 801 Sherwood Street, and the brick warehouses on Milton Street, were associated early on with the Missoula Mercantile Company. The Western States Grocery Company built a joined pair of brick warehouses with arched gambrel roof elements at 806 West Spruce which served as fruit and vegetable warehouses from 1932 – 1934, one of the few Depression Era expansions in the boundary increase area.

Missoula Downtown Historic District Boundary Increase

Missoula, Montana

Name of Property

County and State

**Contributing and Noncontributing Features of the
 Missoula Downtown Historic District Boundary Increase**

**Key: C = Contributing
 NC = Noncontributing
 P- Primary**

ADDRESS	TYPE	STYLE/INFLUENCE	BUILDING DATE	NATIONAL REGISTER ELIGIBILITY	SITS
710 Cooper St.	Commercial Commercial	No style-gabled No style-gabled	1980-1992 1980-1992	NC NC	24MO1576
713 Cooper St.	Residential Shed	No style-gabled No style	Prior to 1900 c. 1980	NC NC	24MO1574
715 Cooper St.	Residential	No-style-gabled	1902-1909	C	24MO1577
717 Cooper St.	Residential Shed	No-style-gabled No style	Prior to 1900 c. 2000	C NC	24MO1578
721 Cooper St.	Residential	No style-hipped	1902-1909	NC	24MO1579
727 Cooper St.	Residential	No style-gabled	1900-1902	C	24MO1580
731 Cooper St.	Residential Shed	Craftsman No style-shed roof	c.1913-1914 c.1970	C NC	24MO1581
736 Cooper St.	Commercial	Utilitarian-industrial	1959-1970	NC	24MO1582
725 Holmes St.	Residential	No style-multi-gabled	c. 1909	C	24MO1613
727 Holmes St.	Residential	No style	c. 1970	NC	24MO1583
730 Holmes St.	Commercial	No style	c. 1970	NC	24MO1584
734 Holmes St.	Commercial	No style	c. 1980	NC	24MO1585
720 Milton St.	Residential/commercial	No style-multi-gabled	c. 1900 (moved)	NC	24MO1586
802 Milton St.	Commercial	Western Commercial	1902-1912	C P	24MO1587
306 Railroad St.	Commercial	Utilitarian-industrial	c. 1947	C	24MO1612
801 Sherwood	Commercial	Utilitarian-industrial	c. 1929	C P	24MO1588
506 Toole Ave.	Commercial NA	Utilitarian Hipped Roof Flat Gateway Arch	1902-1912 1902-1912	C C	24MO1589
508 Toole Ave.	Commercial	Utilitarian Hipped roof	1921-1951	C	24MO1590
600 Toole Ave.	Residential	No style	1902-1912	C	24MO1591
604 Toole Ave. 604 1/2 Toole Av	Residential Residential	No style Modern	1902-1912 c. 2007	C NC	24MO1592
608 Toole Ave.	Residential Auxiliary	No style No style-gabled	Prior to 1901 c. 1960	C NC	24MO1593
612 Toole Ave.	Residential Residential	No style No style	Prior to 1893 c. 2007	C NC	24MO1594

Missoula Downtown Historic District Boundary Increase

Missoula, Montana

Name of Property

County and State

614 Toole Ave.	Residential Auxiliary	No style No style	c. 1950 c.1960	NC NC	24MO1595
620 Toole Ave.	Residential Auxiliary	No style-gabled No style-gabled	c. 1902 (moved) 1912-1921	NC C	24MO1596
624 Toole Ave.	Residential Auxiliary	No style No style-gabled	Prior to 1901 After 1958	C NC	24MO1597
628 Toole Ave.	Residential Auxiliary	No style-gabled No style-gabled	1958-1969 1958-1969	NC NC	24MO1598
632 Toole Ave.	Residential Auxiliary	Craftsman (moved?) No style	c. 1910 1921-1951	NC C	24MO1599
636 Toole Ave.	Residential Auxiliary	Queen Anne influence	Prior to 1902 1994	C NC	24MO1600
704 Toole Ave.	Residential Garage	Contemporary influence No style-gabled	1951-1958 1951-1958	C C	24MO1601
710 Toole Ave.	Residential Auxiliary	No style-gabled No style-gabled	c. 1901 1921-1951	C C	24MO1602
714 Toole Ave.	Residential Auxiliary	No style No style-gabled	Prior to 1901 1921-1958	NC NC	24MO1603
718 Toole Ave.	Residential Shed	Modern Modern	c. 1970 c. 1990	NC NC	24MO1604
724 Toole Ave.	Residential Residential Garage	Craftsman No style No style	c. 1925 c. 1925 c. 1925	C C C	24MO1605
730 Toole Ave.	Residential Garage	No style-gabled No style-gabled	Prior to 1901 1921-1951	C NC	24MO1606
738 Toole Ave.	Multi-family Residential	Queen Anne influence No style	Prior to 1901 1912-1921	NC C	24MO1607
812 Toole Ave.	Commercial	Industrial-utilitarian	c. 1967	NC	24MO1614
703 W. Alder St.	Residential Auxiliary	No style-multi-gabled No style	c. 1905 c. 1905	C C	24MO1608
705 W. Alder St.	Residential Garage	No style-multi-gabled No style-gabled	c. 1905 After 1958	C NC	24MO1609
711 W. Alder St.	Residential Garage	No style-hip-on-gable No style-gabled	c. 1905 After 1958	C NC	24MO1610
725 W. Alder St.	Commercial	Western Commercial	1893-1902	C P	24MO1611
806 West Spruce	Commercial Warehouse	No Style Gambrel Roof	1932-1934	C	

Total for Missoula Downtown Historic District Boundary Increase: 41 Lots; 66 Resources; 34 Contributing; 32 Noncontributing

Total for Missoula Downtown Historic District, the Missoula Downtown Historic District Addendum, and the Missoula Downtown Historic District Boundary Increase: 655 Resources, 525 Contributing, 130 Noncontributing

Missoula Downtown Historic District Boundary Increase
Name of Property

Missoula, Montana
County and State

8. Statement of Significance

Applicable National Register Criteria

(Mark "x" in one or more boxes for the criteria qualifying the property for National Register listing.)

- A Property is associated with events that have made a significant contribution to the broad patterns of our history.
- B Property is associated with the lives of persons significant in our past.
- C Property embodies the distinctive characteristics of a type, period, or method of construction or represents the work of a master, or possesses high artistic values, or represents a significant and distinguishable entity whose components lack individual distinction.
- D Property has yielded, or is likely to yield, information important in prehistory or history.

Criteria Considerations

(Mark "x" in all the boxes that apply.)

Property is:

- A Owned by a religious institution or used for religious purposes.
- B removed from its original location.
- C a birthplace or grave.
- D a cemetery.
- E a reconstructed building, object, or structure.
- F a commemorative property.
- G less than 50 years old or achieving significance within the past 50 years.

Areas of Significance

(Enter categories from instructions.)

TRANSPORTATION

COMMERCE

Period of Significance

1883 – 1959

Significant Dates

1883, 1887, 1929

Significant Person

(Complete only if Criterion B is marked above.)

Cultural Affiliation

Architect/Builder

Harry Haines, Missoula Mercantile Company,

Anaconda Lumber Company,

Ceretana Feed Company

Period of Significance (justification)

The Missoula Downtown Historic District boundary increase area retains its integrity and is eligible for listing in the National Register of Historic Places under Criteria A and C. The period of significance for the boundary increase begins slightly after, but within the dates established for the original Missoula Downtown Historic District. The Boundary Increase Period of Significance begins in 1883 with the establishment of the Northern Pacific Railroad. Development continued in 1887, with the establishment of the Missoula and Bitter Root Railroad (the Bitter Root Branch), and the Missoula and

Missoula Downtown Historic District Boundary Increase
Name of Property

Missoula, Montana
County and State

Hamilton Railroad, and ends in 1959, the termination date established in the original Missoula Downtown Historic District nomination (2009).

Criteria Considerations (explanation, if necessary)

Statement of Significance Summary Paragraph (Provide a summary paragraph that includes level of significance and applicable criteria.)

The Missoula Downtown Historic District Boundary Increase area retains its integrity and is eligible for listing in the National Register of Historic Places under Criteria A and C at a local level of significance. The period of significance for the boundary increase begins in 1883 with the Northern Pacific Railroad, after the Original Town Site, development (1875) and ends in 1959, the date established by the original Missoula Downtown Historic District National Register nomination (2009). The Missoula Downtown Historic District Boundary Increase is significant under National Register Criterion A for its strong association with the city's evolving patterns of political, economic and social history during the late nineteenth and twentieth centuries. The area of this boundary increase reflects a continuation of the overall pattern of development in the downtown, and in particular, along the Bitter Root Branch (1887) and the BNSF (Northern Pacific, 1883) railroads, with its mix of small scale commercial, industrial and residential development. Of particular significance is the continuity of landscape pattern with other "railroad" neighborhoods, like the Missoula Northside Historic Railroad District adjacent to the Downtown to the north east of this boundary increase area. This "railroad" pattern includes the railroad track boundary, railroad warehouses, and the small-scale (30-foot wide) residential component. As the downtown grew, the boundary increase area became an important site for worker residences and rail transportation related facilities. The downtown historically contained a significant residential aspect and continues to do so today. Residential patterns and densities in the boundary increase area are consistent with the other "railroad" neighborhoods, the Northside Railroad Historic District and the Lower Rattlesnake Historic District (24MO372), as well as the neighborhoods in the Downtown Historic District along Owen, Railroad, Alder and Spruce streets. The signature landmark in this boundary increase is the "Ceretana" grain elevator (1929), originally part of the Missoula Mercantile and associates' business empire.

The Downtown Missoula Historic District boundary increase is also significant under National Register Criterion C as a continuing representation of the broad patterns of architectural evolution in western Montana during the late nineteenth and early twentieth centuries. Missoula's historic downtown boundary increase area features an eclectic, and largely vernacular architectural mix that includes excellent examples of a variety of railroad district related commercial buildings, and dominated by Queen Anne and vernacular residential building types.

Narrative Statement of Significance (Provide at least one paragraph for each area of significance.)

For a complete and detailed description of the significance of the downtown historic district, please refer to the *Missoula Downtown Historic District, NRHP* nomination form. The original portion of the Missoula Downtown Historic District was listed in the National Register on August 21, 2009 (NR# 07000647). An addendum to the district occurred in 2011 (*Missoula Downtown Historic District Addendum*) [listed February 7, 2011, NR#10001206].

The Missoula Downtown Historic District Boundary Increase area retains its integrity and is eligible for listing in the National Register of Historic Places under Criteria A and C. The area of this boundary increase begins to develop after the completion of the Northern Pacific Railroad and continues after the development of the Bitter Root Branch. The boundary increase shows a continuation of the overall pattern of development in the downtown, and in particular along the Bitter Root Branch and the BNSF (Northern Pacific) railroads, with its mix of small scale commercial, industrial and residential development. Landscape continuity with other nearby "railroad" neighborhoods is apparent. This "railroad" pattern includes the railroad track boundary, railroad warehouses, and the small-scale (30-foot wide) residential component. Many of these narrow residences are similar to "shotgun houses" with direct passage from the front entry to the rear of the building. Due to their simple nature, economic construction, and small size, these worker's cottages often defy stylistic nomenclature. Yet many have massing and subtle detailing reflecting Queen Anne style influences. Later houses, built in the twenties, are clearly fashioned after Craftsman style bungalows widely publicized in popular magazines.

Missoula Downtown Historic District Boundary Increase
Name of Property

Missoula, Montana
County and State

The signature building in this boundary increase is the "Ceretana" grain elevator at Sherwood and Milton, originally part of the Missoula Mercantile and associates' business empire

The historic period for the entire district stems from the initial development of the downtown around the mill located along the Mullan Military Road (Front Street) and the southeast corner of what would become Higgins Avenue. The period for the entire downtown includes the pre-railroad era from 1875-1883 when the effects of a national recession and the lack of a railroad to transport goods kept Missoula's growth slow during the later portion of the 1870s and into the early 1880s. However, with the arrival of the Northern Pacific Railroad in 1883, the village of approximately 400 boomed with a period of significant expansion of the downtown in an east, west and northerly direction. The Northern Pacific Railroad's arrival in Missoula in 1883 set off a frenzy of economic activity and population growth. A construction boom ensued and by the end of the decade grand commercial buildings such as the First National Bank and the Higgins Block (discussed in the original nomination) created a big-city-like urban streetscape in the downtown. The railroad and its repair shops, located on the northern edge of the downtown, employed a large work crew and spurred the development of working class neighborhoods north of the tracks and a general expansion along railroad lines, and complete platting of blocks and lots in the area of this boundary increase. This in turn, fueled a building boom of more upscale housing throughout other sections surrounding the commercial city center. As the businesses prospered, mansions appeared on the scene, especially along the streets of the newly platted areas south of the Clark Fork River.

In March of 1883, Territorial Governor, Benjamin Franklin Potts approved a charter for the Town of Missoula. Choice lots throughout the town site were offered to the Northern Pacific to entice them to set up its shops and division headquarters in Missoula. As the presence of the railroads increased, so did timber harvesting, a result of the presence of the railroads. The timber industry in western Montana continued to grow as railroad branch lines extended into the Bitterroot and Flathead valleys. By the late 1880s, there was no doubt that Missoula had established itself as the trade center of western Montana.

The area of the boundary increase reflects the building boom of the mid-1880s through 1912, a period when a number of important buildings were constructed in the downtown core, and along rail lines. The School, Washington McCormick and C. P. Higgins Additions were filed during this period by Messrs McCormick and Higgins allowing lots to be conveyed, filed and developed. Residential development close to the workplace, on small platted lots, is the pattern in the boundary increase area. The historic period includes the years of retrenchment after 1895 when the effects of a national business depression began to be felt in Missoula and construction projects slowed until resurgence occurred in the late 1890s. The historic period also includes the return of prosperity in the late 1890s that carried forward well into the 1920s and witnessed the building of the boundary increase's local landmark building, the "Ceretana" grain elevator (Missoula Mercantile flour and grain facility) built 1929, and warehouses at 725 West Alder and 802 Milton (constructed after 1902). The historic period continues through the national financial depression of the 1930s, when federal projects brought impressive civic building additions to the downtown. The WWII era and its aftermath of construction projects brings the historic period up to 1959, the termination date originally listed in the *Missoula Downtown Historic District* National Register nomination form (2009).

The boundary increase area contains individual resources dating to almost every major period of the city's history and displays architectural details and construction techniques representative of those eras. Individually and in combination, these structures are evocative of the long and rich history of commercial and residential construction in Missoula's downtown and overall, with this boundary increase, comprise the largest historic commercial/residential district in western Montana. As a landmark in the downtown and within this boundary increase area, the "Ceretana" grain elevator is one of the last complete grain elevators in western Montana, and the only remaining railroad grain elevator in Missoula County. Its two towers, each more than fifty feet in height, form a distinct geometric mass on the cityscape of Missoula's downtown historic district.

Developmental history/additional historic context information (if appropriate)

Missoula Downtown Historic District Boundary Increase
Name of Property

Missoula, Montana
County and State

9. Major Bibliographical References

Bibliography (Cite the books, articles, and other sources used in preparing this form.)

REFERENCES CONSULTED

Books & Published Pamphlets

Andrew, Bernice M. "Hellgate 1860 – The Beginning of Missoula, Montana "

Anonymous. Facts and Figures Concerning Industries and Land Throughout Western Montana and Its Metropolis, Missoula, "Montana's Garden City" in Missoula County Montana. Missoula: The Missoulian, 1918.

Anonymous. Missoula, The Garden City. Missoula: Missoulian Publishing Company, 1910.

Anonymous. Missoula, "Garden City." Missoula: Missoula Chamber of Commerce, 1922.

Anonymous. Missoula, The Garden City of Montana. Missoula: Missoula Chamber of Commerce, 1929.

Anonymous. Missoula, Montana: Let's Stay Over. Missoula: Missoula Chamber of Commerce. No date.

Cohen, Stan. Missoula County Images. Missoula: Pictorial Histories Publishing, 1982.

Cohen, Stan. Missoula County Images II. Missoula: Pictorial Histories Publishing Company, 1993.

"The Daily Missoulian Souvenir". Published by Missoulian Publishing Company, 1922.

Ellsworth, W.E. ed. "History of Missoula." Compiled from data furnished by Frank Woody.

Koelbel, Lenora. Missoula the Way it Was: A Portrait of an Early Western Town. Missoula

Krigbaum, Dagny. The McCormick Neighborhood Historic District National Register of Historic Places Nomination, Missoula County. May 19, 2004. On file at the State Historic Preservation Office.

Krigbaum, Dagny, Allan Mathews and Philip Maechling. Missoula Downtown Historic District National Register of Historic Places Nomination, Missoula County, October 21, 2009. On file at the State Historic Preservation Office.

Leeson, Michael A. History of Montana. Chicago: Warner Beers and Company, 1885.

Martin, Dale, and Brian Shovers. "Butte, Montana: An Architectural and Historical Inventory of the National Landmark District." Report prepared for the Butte Historical Society, 1986.

McAlester, Lee and Virginia McAlester. A Field Guide to American Houses. New York: Alfred A. Knopf, 1985.

Malone, Michael P. and Richard Roeder. Montana: A History of Two Centuries. Seattle: University of Washington Press, 1976.

Mathews, Allan James. Montana Mainstreets, Volume 6: A Guide To Historic Missoula. Helena: Montana Historical Society Press, 2001.

Missoula Chamber of Commerce. City of Missoula and Western Montana. Daily Missoulian. No date.

"Missoula Hellgate Centennial." 1960.

"Missoula, Montana Historically Speaking." Published by Missoula Chamber of Commerce.

Missoula Downtown Historic District Boundary Increase
Name of Property

Missoula, Montana
County and State

- Polk, R.L. and Company. Polk's Missoula City Directory, Including Missoula County. Kansas City, MO: R.L. Polk, 1903-1955.
- Progressive Men of the State of Montana. Chicago: A.W. Bowen and Company, 1900.
- Raymer, Robert George. Montana the Land and the People. Chicago: The Lewis Publishing Company, 1930.
- Renz, Louis Tuck. The History of the Northern Pacific Railroad. Fairfield, Washington: Ye Galleon Press, 1980.
- Sanders, Helen Fitzgerald. A History of Montana. 3 Vols. Chicago and New York: Lewis Publishing Company, 1913.
- Schafer, Katherine and Dale Johnson. Bibliography of Materials for Missoula City and County History. Missoula: University of Montana Library, 1975.
- Spritzer, Don. Roadside History of Montana. Missoula: Mountain Press Publishing Company, 1999.
- Stout Thomas, ed. Montana: Its Story and Biography, 3 Vols. Chicago and New York: American Historical Society, 1921.
- Stuart, Granville. Forty Years on the Frontier, ed. Paul C Phillips. Lincoln: University of Nebraska Press, 1977.
- Toole, John. Men, Money and Power. Missoula: Mountain Press, 1986.
- Toole, John. Red Ribbons, A Story of Missoula and Its Newspaper. Davenport, Iowa: Lee Enterprises, 1989.
- Toole, K. Ross. The Uncommon Land. Norman: University of Oklahoma Press, 1959.
- Woody, Frank H. History of Missoula County and City. Democrat Messenger, December 1897. (Available at Missoula City County Library)
- United States, Works Progress Administration, Division of Women's and Professional Projects, The Historical Records Survey. Inventory of the County Archives of Montana: Missoula. Missoula: The Historical Records Survey, 1938.
- Montana: A State Guide Book. American Guide Series. New York: Hastings House, 1939.
- Wright and Woodward. Missoula City Directory: 1890. Missoula: 1890.
- Articles**
- Cave, Will. "Some Firsts of the Garden City." The Missoulian. June 15, 1924.
- Smalley, E.V. "Missoula, The Garden City of Montana." The Northwest Magazine 8 (1890), pp. 16-25.
- Stone, A.L. "Years from 1890 to 1915 Set Stage for Present Growth." Sunday Missoulian. August 18, 1940.
- Thesis & Dissertations**
- Alwin, John A. "Patterns of Montana's Towns, 1860 to 1920." Thesis, The University of Montana, 1972.
- Chimbos, Peter. "The Hellenes of Missoula." M.A. Thesis, Montana State University (Missoula), 1963.
- Coon, Shirley Jay. "The Economical Development of Missoula, Montana." Ph.D Dissertation, University of Chicago, 1926.
- Hulse, Millard Oscar. "A New Technique for Analyzing the Morphology of Residential Areas and Its Application to Missoula, Montana." Thesis, The University of Montana, 1969.

Missoula Downtown Historic District Boundary Increase
Name of Property

Missoula, Montana
County and State

Johnson, Dale L. "Andrew B. Hammond: Education of a Capitalist on the Montana Frontier. Ph.D. Dissertation, The University of Montana, 1976.

Rowan, Margaret Therese. "An Historical Sketch of Northwestern Montana and Missoula, 1902." B.A. Thesis, The University of Montana, 1902.

Newspapers & Newspaper Special Editions

The Weekly Missoulian, Missoula, Montana.

The Daily Missoulian, Missoula, Montana.

The Missoula Gazette, Missoula, Montana.

The Missoulian. Special Editions. December 19, 1926; April 30, 1933; August 18, 1940; Centennial Edition 1960.

The Montana Standard, Butte, Montana.

Unpublished Material

Browman, Audra. Annotated Card File, History of Missoula to 1891. The University of Montana Archives.

Chacón, Hipólito Rafael. "The Original Man: The Life and Work of Montana Architect A. J. Gibson (1862-1927)." The University of Montana Press and the Montana Museum of Art and Culture, 2008.

Filicetti, Paul. "Missoula Comprehensive Historic Preservation Plan." Prepared for HP622 Preservation Planning, Historic Preservation Program, Goucher College, MD. May 1999

Historical Research Associates. Research Materials Prepared for Historical Resource Survey of Missoula, Montana, 1980. Project No. 79-33, The University of Montana Archives.

McLeod, Paul. "Significant Architecture of Downtown Missoula, Montana." Unpublished brochure, n.d. The University of Montana Archives.

Mathews, Allan James and Joe Olson. "Historic Trails Through The Missoula Valley." Available at the Missoula Historic Preservation Office (Office of Planning and Grants), 1992.

McDonald, Jim. "Missoula Historical Resource Survey-1980." On file with the Missoula Office of Planning & Grants, Missoula, Montana.

Public Records

Deed Books and Historical Index to Deed Books. Office of Missoula County Clerk and Recorder, Missoula County Courthouse.

Plat Books and Tax Appraiser Forms. Office of Missoula County Assessor and Appraiser, Missoula County Courthouse.

U.S. Government Records

U.S. Bureau of the Census. Census of Missoula County, 1880.

U.S. Bureau of the Census. Twelfth Census of the United States, 1890

U.S. Bureau of the Census. Census of Missoula County, 1900, 1920, 1930.

Cartographic Records

Sanborn Fire Insurance Maps. City of Missoula, 1884, 1891, 1902, 1912, 1921, 1921 updated to 1944 and 1950. On file at Cartographic Collections, the University of Montana Archives.

Missoula Downtown Historic District Boundary Increase
Name of Property

Missoula, Montana
County and State

Previous documentation on file (NPS):

- preliminary determination of individual listing (36 CFR 67 has been requested)
- previously listed in the National Register
- previously determined eligible by the National Register
- designated a National Historic Landmark
- recorded by Historic American Buildings Survey # _____
- recorded by Historic American Engineering Record # _____
- recorded by Historic American Landscape Survey # _____

Primary location of additional data:

- State Historic Preservation Office
 - Other State agency
 - Federal agency
 - Local government
 - University
 - Other
- Name of repository: _____

Historic Resources Survey Number (if assigned): _____

10. Geographical Data

Acreage of Property 17.9 acres
(Do not include previously listed resource acreage.)

UTM References

(Place additional UTM references on a continuation sheet.)

UTM 12N, NAD 83, meters

Legal Location (Township, Range & Section(s)): T 13N, R 19W, portions of Sections 16, 21 and 22

A	<u>11</u>	<u>728267</u>	<u>5195903</u>	B	<u>11</u>	<u>728284</u>	<u>5195959</u>
	Zone	Easting	Northing		Zone	Easting	Northing
C	<u>11</u>	<u>728367</u>	<u>5195963</u>	D	<u>11</u>	<u>728435</u>	<u>5196137</u>
	Zone	Easting	Northing		Zone	Easting	Northing
E	<u>11</u>	<u>728349</u>	<u>5196130</u>	F	<u>11</u>	<u>728348</u>	<u>5196176</u>
	Zone	Easting	Northing		Zone	Easting	Northing
G	<u>11</u>	<u>728506</u>	<u>5196181</u>	H	<u>12</u>	<u>272045</u>	<u>5195610</u>
	Zone	Easting	Northing		Zone	Easting	Northing
I	<u>12</u>	<u>271710</u>	<u>5195878</u>	J	<u>12</u>	<u>271591</u>	<u>5195965</u>
	Zone	Easting	Northing		Zone	Easting	Northing
K	<u>11</u>	<u>728534</u>	<u>5195970</u>	L	<u>11</u>	<u>728531</u>	<u>5196024</u>
	Zone	Easting	Northing		Zone	Easting	Northing
M	<u>11</u>	<u>728514</u>	<u>5196072</u>	N	<u>11</u>	<u>728512</u>	<u>5195969</u>
	Zone	Easting	Northing		Zone	Easting	Northing
O	<u>11</u>	<u>728426</u>	<u>5195962</u>	P	<u>11</u>	<u>728474</u>	<u>5195936</u>
	Zone	Easting	Northing		Zone	Easting	Northing

Missoula Downtown Historic District Boundary Increase
Name of Property

Missoula, Montana
County and State

Q 11	<u>728452</u>	<u>5195887</u>	R 11	<u>728351</u>	<u>5195919</u>
Zone	Easting	Northing	Zone	Easting	Northing
S 11	<u>728313</u>	<u>5195881</u>			
Zone	Easting	Northing	Zone	Easting	Northing

Verbal Boundary Description (Describe the boundaries of the property.)

The Missoula Downtown Historic District Boundary Increase lies within the platted area of the School, McCormick and Higgins Additions, in the northwest portion of the Downtown area. The point of beginning for the boundary increase begins just west of the intersection of West Spruce Street and the Bitter Root Branch of the Montana Rail Link (MRL). The boundary heads northeast across a field where it turns east along Toole Avenue and intersects with the MRL. It then progresses northeast along the MRL ROW, to its approximate intersection with Milton Street, where it turns west and follows an alley to the west. The boundary turns north between two lots arriving at its most-northwest point on Sherwood Street. It then runs east along the street ROW, then southeast to the MRL ROW to its intersection with the BNSF ROW. It continues in a southeast direction along the BNSF ROW to just east of its intersection with Ryman Street where it intersects with the northern boundary of the original Missoula Downtown Historic District. From this point, it runs back to the northwest along Railroad Street to Toole Avenue to the intersection of Toole Avenue and Alder Street. The boundary then moves southeast along Alder Street, then south for half a block along May Street, then west along an alley to its intersection with the MRL ROW. The boundary then runs southwest, close to the MRL ROW to Spruce Street where it turns west to the point of beginning.

Boundary Justification (Explain why the boundaries were selected.)

This boundary expansion completes the Downtown Historic District by including properties that are south and east of the Montana Rail Link/Bitter Root Branch Railway and the Northern Pacific/BNSF railway and the northerly boundary of the District as accepted in 2009. The railroads form a physical and social boundary between the Downtown District and the Lower Rattlesnake and Northside Railroad Historic Districts. The boundary increase area developed at the same time and in the same development pattern as the adjacent district neighborhoods to the southeast and northeast. The pattern and spatial distribution are similar to the areas of the southeast, in the feeling, association, materials, setting and workmanship of the structures. When the original Downtown survey was initiated, there was not enough money to survey the boundary increase area, and so it was left out of the Missoula Downtown Historic District until this boundary increase amendment.

11. Form Prepared By

name/title Philip Maechling, Historic Preservation Officer, with Dagny Krigbaum
organization Missoula Historic Preservation Office date August 15, 2010
street & number 435 Ryman telephone 406 258 4657
city or town Missoula state MT zip code 59802
e-mail pmaechli@co.missoula.mt.us

Missoula Downtown Historic District Boundary Increase
Name of Property

Missoula, Montana
County and State

Additional Documentation

Submit the following items with the completed form:

- **Maps:** A **USGS map** (7.5 or 15 minute series) indicating the property's location.
A **Sketch map** for historic districts and properties having large acreage or numerous resources. Key all photographs to this map.
- **Additional items:** (Check with the SHPO or FPO for any additional items.)

Photographs:

Submit clear and descriptive photographs. The size of each image must be 1600x1200 pixels at 300 ppi (pixels per inch) or larger. Key all photographs to the sketch map.

Name of Property:

City or Vicinity:

County:

State:

Photographer:

Date Photographed:

Description of Photograph(s) and number:

1 of ____

(Please see Continuation Sheets)

Property Owner:

(Complete this item at the request of the SHPO or FPO.)

name Multiple, please see list at bottom of nomination
street & number _____ telephone _____
city or town _____ state _____ zip code _____

Paperwork Reduction Act Statement: This information is being collected for applications to the National Register of Historic Places to nominate properties for listing or determine eligibility for listing, to list properties, and to amend existing listings. Response to this request is required to obtain a benefit in accordance with the National Historic Preservation Act, as amended (16 U.S.C. 460 et seq.).

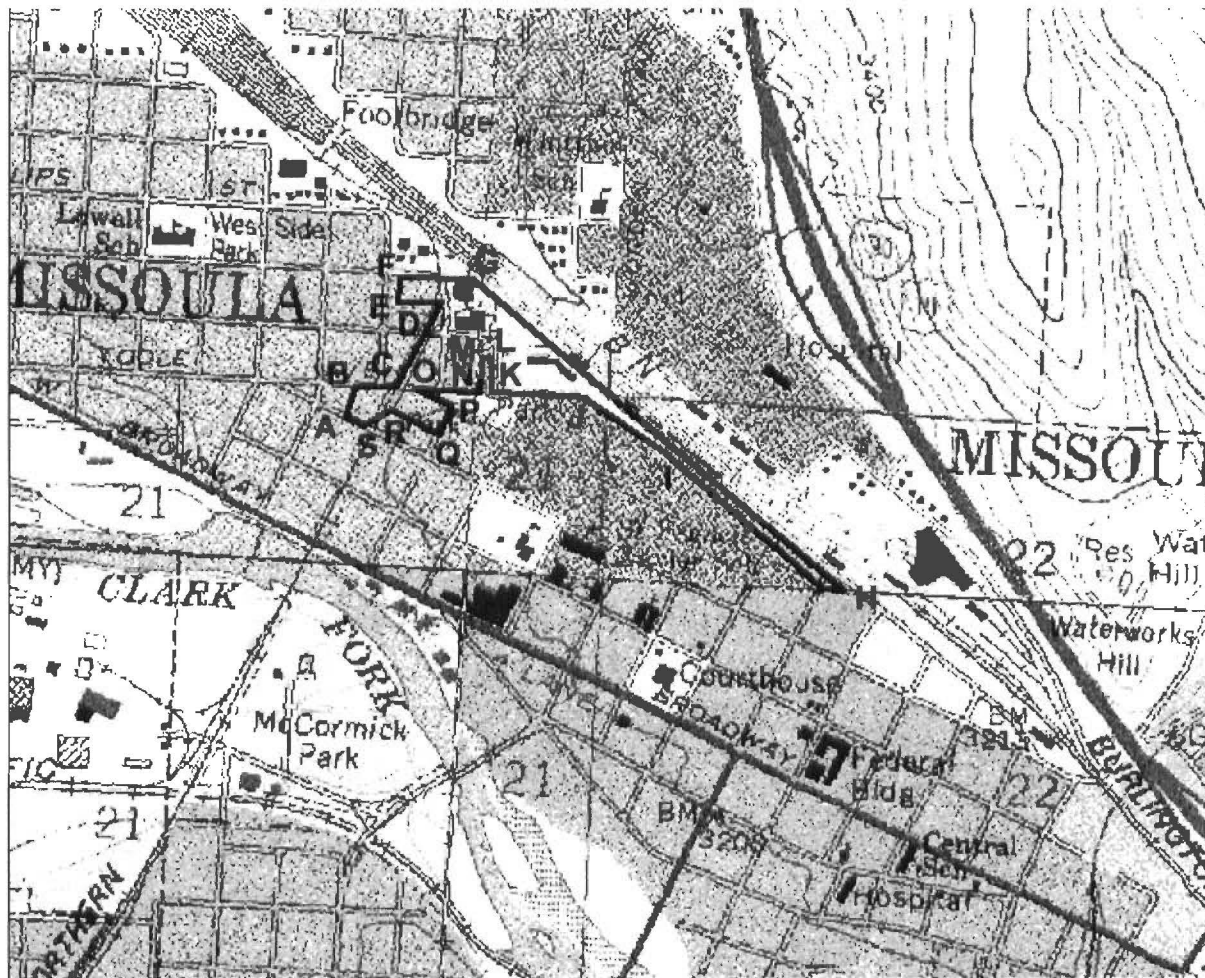
Estimated Burden Statement: Public reporting burden for this form is estimated to average 18 hours per response including time for reviewing instructions, gathering and maintaining data, and completing and reviewing the form. Direct comments regarding this burden estimate or any aspect of this form to the Office of Planning and Performance Management, U.S. Dept. of the Interior, 1849 C. Street, NW, Washington, DC.

Missoula Downtown Historic District Boundary Increase
Name of Property

Missoula, Montana
County and State

Maps and Additional Documentation

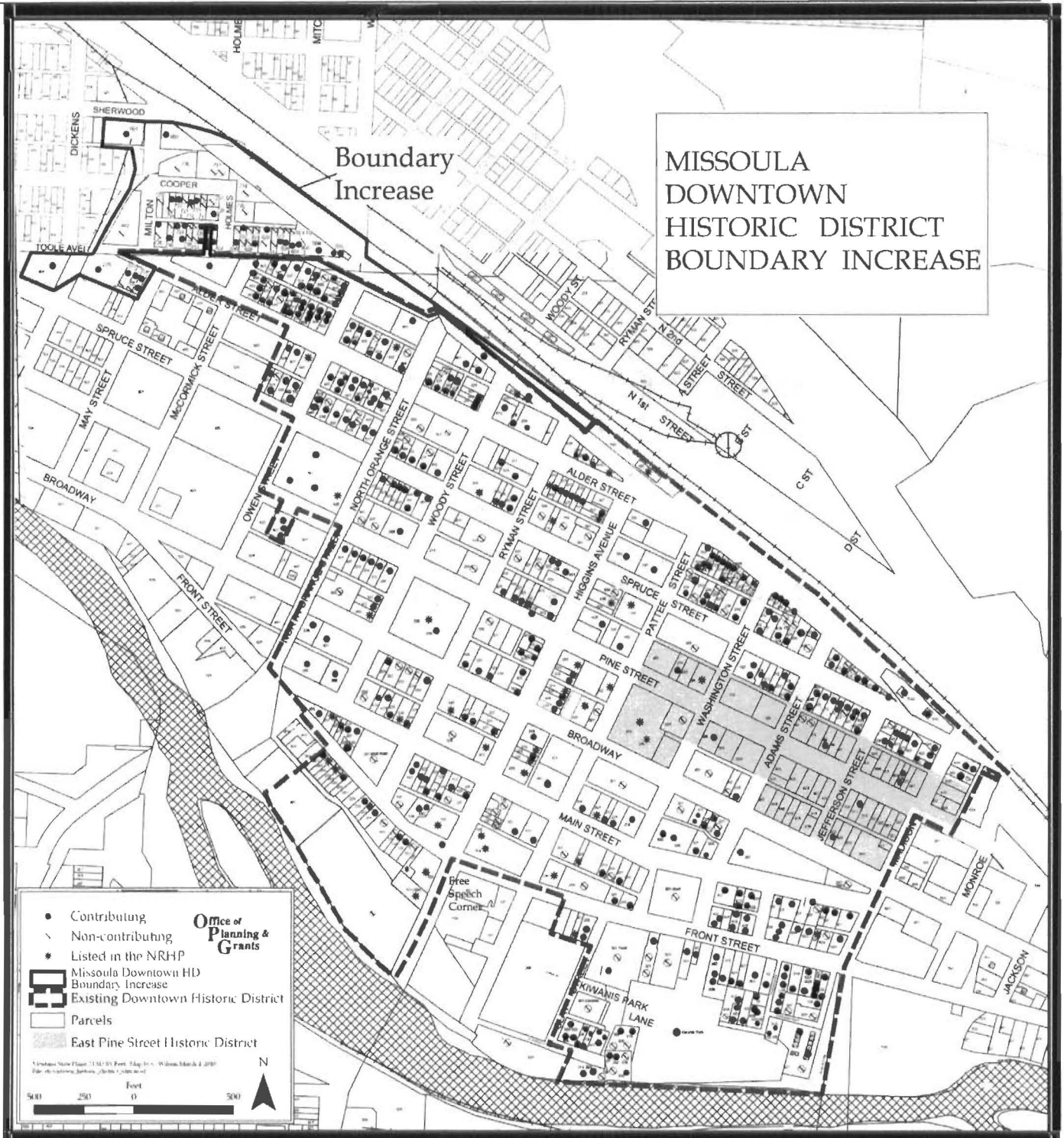
Topographic Map



Missoula Downtown Historic District Boundary Increase. On Northeast Missoula (1964, photorevised 1978) and Northwest Missoula (1964, photorevised 1978) 7.5' quadrangle maps.

Missoula Downtown Historic District Boundary Increase
Name of Property

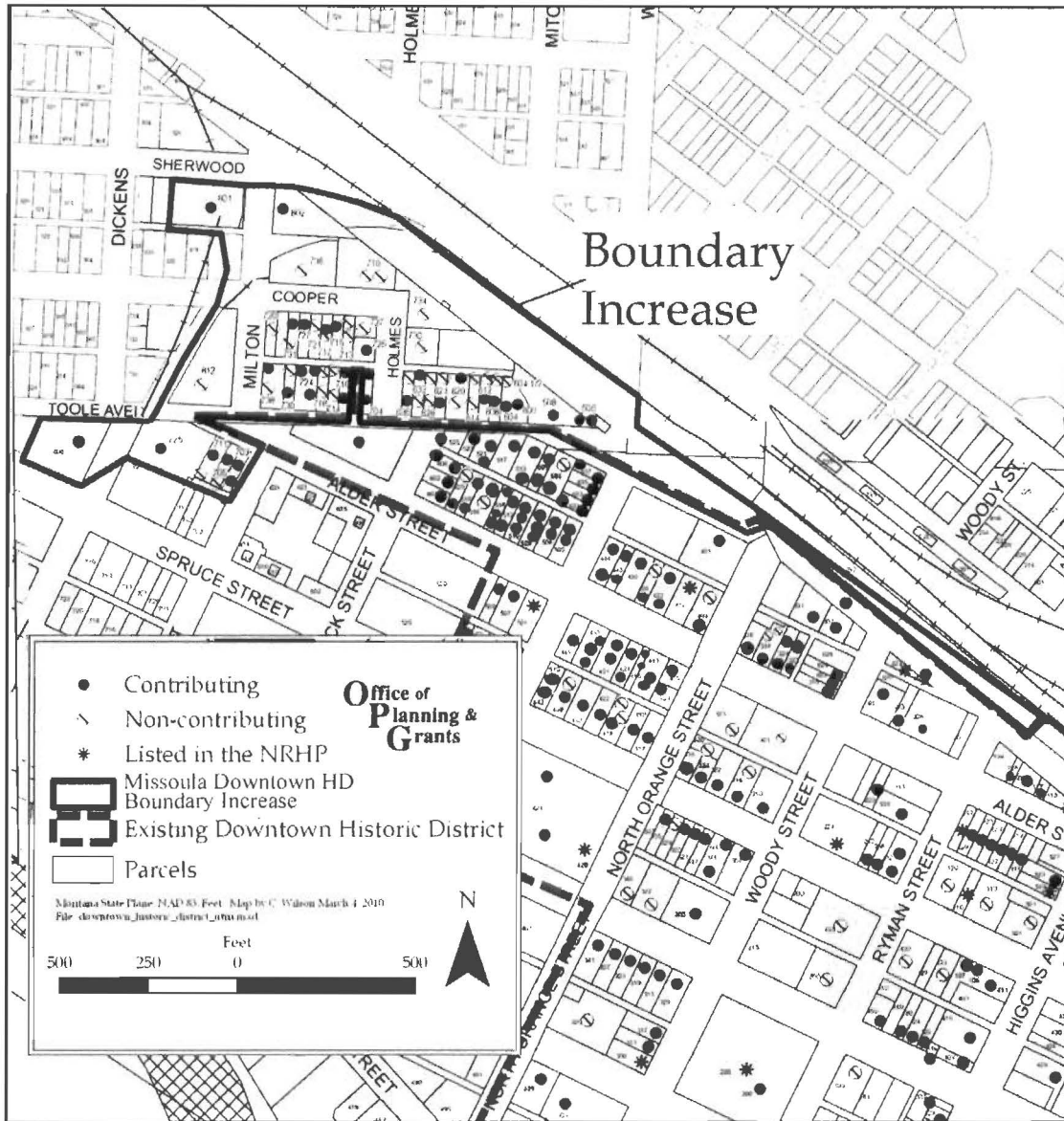
Missoula, Montana
County and State



Missoula Downtown Historic District Boundary Increase.

Missoula Downtown Historic District Boundary Increase
Name of Property

Missoula, Montana
County and State



Detail of Missoula Downtown Historic District Boundary Increase.

Missoula Downtown Historic District Boundary Increase
Name of Property

Missoula, Montana
County and State

National Register Photographs

In accordance with the March 2005 Photo Policy expansion, the photos that accompany this nomination are printed on HP Premium Plus Photo Paper, using a Hewlett Packard 100 gray photo cartridge. This combination of paper and inks is included on the NR's list of "Acceptable Ink and Paper combinations for Digital Images." The images are also recorded on an archival CD-R with a resolution at least 1200x1800 pixels, 300 dpi in "true color" 24-bit format.

Photolog

Name: Missoula Downtown Historic District Boundary Increase

County and State: Missoula, Montana

Photographer: Philip Maechling, Missoula Historic Preservation Officer

Date: March 2010

Digital Image: Missoula Historic Preservation Office

Description of View and Direction: SW side and SE front of Ceretana Grain Elevator, 801 Sherwood. Camera facing NW

Photograph # MT_MissoulaCounty_MissoulaDowntownHistoricDistrictBoundaryIncrease_0001

Name: Missoula Downtown Historic District Boundary Increase

County and State: Missoula, Montana

Photographer: Philip Maechling, Missoula Historic Preservation Officer

Date: March 2010

Digital Image: Missoula Historic Preservation Office

Description of View and Direction: Southeast Corner of Cooper and Milton Streets, Camera facing SE

Photograph # MT_MissoulaCounty_MissoulaDowntownHistoricDistrictBoundaryIncrease_0002

Name: Missoula Downtown Historic District Boundary Increase

County and State: Missoula, Montana

Missoula County, Montana

Photographer: Philip Maechling, Missoula Historic Preservation Officer

Date: March 2010

Digital Image: Missoula Historic Preservation Office

Description of View and Direction: 600 Block of Toole Avenue at Holmes, camera facing NE

Photograph # MT_MissoulaCounty_MissoulaDowntownHistoricDistrictBoundaryIncrease_0003

Name: Missoula Downtown Historic District Boundary Increase

County and State: Missoula, Montana

Missoula County, Montana

Photographer: Philip Maechling, Missoula Historic Preservation Officer

Date: March 2010

Digital Image: Missoula Historic Preservation Office

Description of View and Direction: 632 Toole Avenue, camera facing N

Photograph # MT_MissoulaCounty_MissoulaDowntownHistoricDistrictBoundaryIncrease_0004

Name: Missoula Downtown Historic District Boundary Increase

County and State: Missoula, Montana

Missoula County, Montana

Photographer: Philip Maechling, Missoula Historic Preservation Officer

Date: March 2010

Digital Image: Missoula Historic Preservation Office

Description of View and Direction: 500 Block Toole Avenue, old Lumber Yard buildings, camera facing NE

Photograph # MT_MissoulaCounty_MissoulaDowntownHistoricDistrictBoundaryIncrease_0005

Missoula Downtown Historic District Boundary Increase

Missoula, Montana

Name of Property

County and State

Name: Missoula Downtown Historic District Boundary Increase

County and State: Missoula, Montana

Missoula County, Montana

Photographer: Philip Maechling, Missoula Historic Preservation Officer

Date: March 2010

Digital Image: Missoula Historic Preservation Office

Description of View and Direction: 500 Block Railroad Street/Toole Avenue, SE Entry to Anaconda Lumber Yard
Missoula Mercantile, camera facing W

Photograph # MT_MissoulaCounty_MissoulaDowntownHistoricDistrictBoundaryIncrease_0006

Name: Missoula Downtown Historic District Boundary Increase

County and State: Missoula, Montana

Missoula County, Montana

Photographer: Philip Maechling, Missoula Historic Preservation Officer

Date: March 2010

Digital Image: Missoula Historic Preservation Office

Description of View and Direction: 600 Block Toole Avenue, camera facing W

Photograph # MT_MissoulaCounty_MissoulaDowntownHistoricDistrictBoundaryIncrease_0007

Name: Missoula Downtown Historic District Boundary Increase

County and State: Missoula, Montana

Missoula County, Montana

Photographer: Philip Maechling, Missoula Historic Preservation Officer

Date: March 2010

Digital Image: Missoula Historic Preservation Office

Description of View and Direction: 600 Block of Toole Avenue, camera facing W

Photograph # MT_MissoulaCounty_MissoulaDowntownHistoricDistrictBoundaryIncrease_0008

Name: Missoula Downtown Historic District Boundary Increase

County and State: Missoula, Montana

Missoula County, Montana

Photographer: Philip Maechling, Missoula Historic Preservation Officer

Date: March 2010

Digital Image: Missoula Historic Preservation Office

Description of View and Direction: West end 801 Sherwood, Ceretana Elevator, camera facing E

Photograph # MT_MissoulaCounty_MissoulaDowntownHistoricDistrictBoundaryIncrease_0009

Missoula Downtown Historic District Boundary Increase
Name of Property

Missoula, Montana
County and State

Photographs



Name: Missoula Downtown Historic District Boundary Increase

County and State: Missoula, Montana

Photographer: Philip Maechling, Missoula Historic Preservation Officer

Date: March 2010

Digital Image: Missoula Historic Preservation Office

Description of View and Direction: SW side and SE front of Ceretana Grain Elevator, 801 Sherwood. Camera facing NW

Photograph # MT_MissoulaCounty_MissoulaDowntownHistoricDistrictBoundaryIncrease_0001



Name: Missoula Downtown Historic District Boundary Increase

County and State: Missoula, Montana

Photographer: Philip Maechling, Missoula Historic Preservation Officer

Date: March 2010

Digital Image: Missoula Historic Preservation Office

Description of View and Direction: Southeast Corner of Cooper and Milton Streets, Camera facing SE

Photograph # MT_MissoulaCounty_MissoulaDowntownHistoricDistrictBoundaryIncrease_0002

Missoula Downtown Historic District Boundary Increase
Name of Property

Missoula, Montana
County and State



Name: Missoula Downtown Historic District Boundary Increase

County and State: Missoula, Montana

Missoula County, Montana

Photographer: Philip Maechling, Missoula Historic Preservation Officer

Date: March 2010

Digital Image: Missoula Historic Preservation Office

Description of View and Direction: 600 Block of Toole Avenue at Holmes, camera facing NE

Photograph # MT_MissoulaCounty_MissoulaDowntownHistoricDistrictBoundaryIncrease_0003



Name: Missoula Downtown Historic District Boundary Increase

County and State: Missoula, Montana

Missoula County, Montana

Photographer: Philip Maechling, Missoula Historic Preservation Officer

Date: March 2010

Digital Image: Missoula Historic Preservation Office

Description of View and Direction: 632 Toole Avenue, camera facing N

Photograph # MT_MissoulaCounty_MissoulaDowntownHistoricDistrictBoundaryIncrease_0004

Missoula Downtown Historic District Boundary Increase
Name of Property

Missoula, Montana
County and State



Name: Missoula Downtown Historic District Boundary Increase
County and State: Missoula, Montana
Missoula County, Montana
Photographer: Philip Maechling, Missoula Historic Preservation Officer
Date: March 2010
Digital Image: Missoula Historic Preservation Office
Description of View and Direction: 500 Block Toole Avenue, old Lumber Yard buildings, camera facing NE
Photograph # MT_MissoulaCounty_MissoulaDowntownHistoricDistrictBoundaryIncrease_0005



Name: Missoula Downtown Historic District Boundary Increase
County and State: Missoula, Montana
Missoula County, Montana
Photographer: Philip Maechling, Missoula Historic Preservation Officer
Date: March 2010
Digital Image: Missoula Historic Preservation Office
Description of View and Direction: 500 Block Railroad Street/Toole Avenue, SE Entry to Anaconda Lumber Yard Missoula Mercantile, camera facing W
Photograph # MT_MissoulaCounty_MissoulaDowntownHistoricDistrictBoundaryIncrease_0006

Missoula Downtown Historic District Boundary Increase
Name of Property

Missoula, Montana
County and State



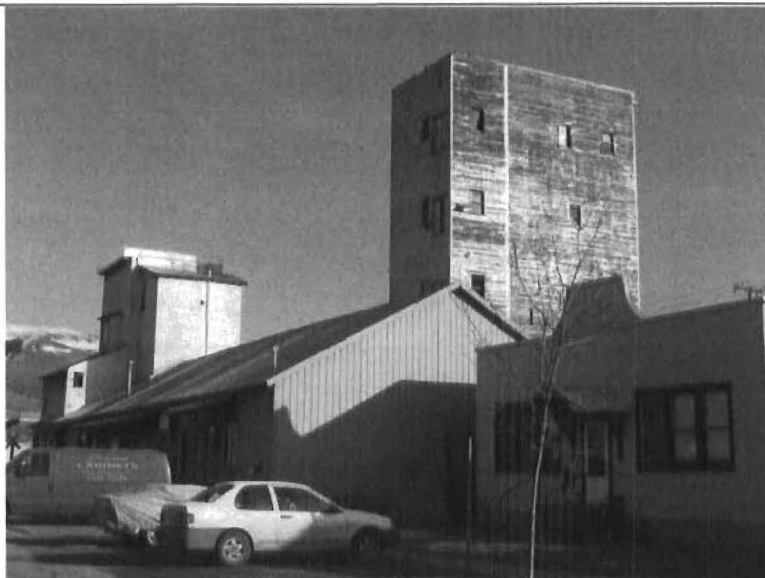
Name: Missoula Downtown Historic District Boundary Increase
County and State: Missoula, Montana
Missoula County, Montana
Photographer: Philip Maechling, Missoula Historic Preservation Officer
Date: March 2010
Digital Image: Missoula Historic Preservation Office
Description of View and Direction: 600 Block Toole Avenue, camera facing W
Photograph # MT_MissoulaCounty_MissoulaDowntownHistoricDistrictBoundaryIncrease_0007



Name: Missoula Downtown Historic District Boundary Increase
County and State: Missoula, Montana
Missoula County, Montana
Photographer: Philip Maechling, Missoula Historic Preservation Officer
Date: March 2010
Digital Image: Missoula Historic Preservation Office
Description of View and Direction: 600 Block of Toole Avenue, camera facing W
Photograph # MT_MissoulaCounty_MissoulaDowntownHistoricDistrictBoundaryIncrease_0008

Missoula Downtown Historic District Boundary Increase
Name of Property

Missoula, Montana
County and State



Name: Missoula Downtown Historic District Boundary Increase

County and State: Missoula, Montana

Missoula County, Montana

Photographer: Philip Maechling, Missoula Historic Preservation Officer

Date: March 2010

Digital Image: Missoula Historic Preservation Office

Description of View and Direction: West end 801 Sherwood, Ceretana Elevator, camera facing E

Photograph # MT_MissoulaCounty_MissoulaDowntownHistoricDistrictBoundaryIncrease_0009

Missoula Downtown Historic District Boundary Increase
Name of Property

Missoula, Montana
County and State

Property Owners

Multiple Property Owners

GEORGIA PACIFIC CORPORATION DEBORAH DIGIOIA 7016 A C SKINNER PKWY JACKSONVILLE FL 32256	CEDAR HILL REALTY PO BOX 726 MISSOULA MT 59806	MORIN TINA L LLC 1124 PHILLIPS ST MISSOULA MT 59802
STRAND ZELDA A 14174 SD HIGHWAY 40 HERMOSA SD 57744	JONES WILLIAM S 718 TOOLE AVE MISSOULA MT 59802	BOWLES REX 714 TOOLE AVE MISSOULA MT 59802
MORROW LEAH C 710 TOOLE AVE MISSOULA MT 59802	GANTERT BERNADINE F 708 TOOLE AVE MISSOULA MT 59802	ELAM JACQUELINE A 704 TOOLE AVE MISSOULA MT 59802
NYBO WILLIAM C & 2236 E SUMMIT DR MISSOULA MT 59803	MYERS RICK E & DONNA J 729 HOLMES ST MISSOULA MT 59802	SANDAU KENNETH L 1600 OTIS ST MISSOULA MT 59802
SPENCE JOANN B MAIL TO JUDITH BARKER 8350 SA MISSOULA MT 59808	MARCHAL MATTHEW A 717 COOPER ST MISSOULA MT 59802	BLEECKER DOUGLAS H PO BOX 5084 MISSOULA MT 59806
UDALL WENDY LYNN 11574 STOLEN ROCK CT MISSOULA MT 59808	PRIESTMAN LAUREN 731 COOPER ST MISSOULA MT 59802	BOGGS WILLIAM PO BOX 7881 MISSOULA MT 59807
BOGGS WILLIAM H TRUSTEES PO BOX 7881 MISSOULA MT 59807	RUDH STEVEN & LINDA 636 TOOLE AVE MISSOULA MT 59802	CHIOTTI PAUL A & BERNICE 845 WAINWRIGHT ST BENICIA CA 94510

Missoula Downtown Historic District Boundary Increase

Missoula, Montana

Name of Property

County and State

COOK TIMOTHY J
628 TOOLE AVE
MISSOULA MT 59802

BENDER KATHLEEN A
PO BOX 1161
LOLO MT 59847

WITTENBERG KRIS A
317 MARY AVE
MISSOULA MT 59801

JORDAN PATRICIA A & MARK A
PO BOX 1088
MARTINEZ CA 94553

MAYNARD KIMBERLY A
612 TOOLE AVE
MISSOULA MT 59802

LEROY BERNADETTE M
608 TOOLE AVE
MISSOULA MT 59802

MADDEN MICHAEL
PO BOX 834
LOLO MT 59847

CARAS FLORAL & NURSERY INC
125 W MAIN ST STE B
MISSOULA MT 59802

LEE CHARLES R & JANET I
730 HOLMES ST
MISSOULA MT 59802

CARAS-VEAZEY JAMES D & KATHRYN
125 W MAIN ST STE B
MISSOULA MT 59802

JEAKINS B HELEN TRUSTEE
PO BOX 184
ROLLINS MT 59931

CARAS JAMES D ETAL
125 W MAIN ST STE B
MISSOULA MT 59802

TOPP LARRY L & PHYLLIS J
310 BEN HOGAN DR
MISSOULA MT 59803

WIEDMER RAYMOND O
4815 ARCADIA CT
MISSOULA MT 59803

STAUSS BEAR
PO BOX 487
WOODSTOCK NY 12498

BERG KENNETH R
WOODWORKING LLC
829 SHERWOOD ST
MISSOULA MT 59802

MONTANA RAIL LINK
PO BOX 16630
MISSOULA MT 59808

VOLKMANN
10915 SADDLEBACK LN
MISSOULA MT 59804

CLEGG ROBERT
MAIL TO MRL PROPERTY MGM
PO BOX
MISSOULA MT 59808

CLEGG ROBERT & LYNDIA
1616 GREENOUGH DR W
MISSOULA MT 59802

CLIFFORD MATHEW O
424 MADISON ST
MISSOULA MT 59802

Douglas G. and Janet T. Stewart
806 West Spruce Street
Missoula, MT 59802

UNITED STATES DEPARTMENT OF THE INTERIOR
NATIONAL PARK SERVICE

NATIONAL REGISTER OF HISTORIC PLACES
EVALUATION/RETURN SHEET

REQUESTED ACTION: NOMINATION

PROPERTY NAME: Missoula Downtown Historic District (Boundary Increase)

MULTIPLE NAME: Missoula MPS

STATE & COUNTY: MONTANA, Missoula

DATE RECEIVED: 2/23/11 DATE OF PENDING LIST: 3/17/11
DATE OF 16TH DAY: 4/01/11 DATE OF 45TH DAY: 4/10/11
DATE OF WEEKLY LIST:

REFERENCE NUMBER: 11000183

REASONS FOR REVIEW:

APPEAL: N DATA PROBLEM: N LANDSCAPE: N LESS THAN 50 YEARS: N
OTHER: N PDIL: N PERIOD: N PROGRAM UNAPPROVED: N
REQUEST: N SAMPLE: N SLR DRAFT: N NATIONAL: N

COMMENT WAIVER: N

ACCEPT RETURN REJECT 4.8.11 DATE

ABSTRACT/SUMMARY COMMENTS:

**Entered in
The National Register
of
Historic Places**

RECOM./CRITERIA _____

REVIEWER _____ DISCIPLINE _____

TELEPHONE _____ DATE _____

DOCUMENTATION see attached comments Y/N see attached SLR Y/N

If a nomination is returned to the nominating authority, the nomination is no longer under consideration by the NPS.



Orland
FEEDS

ALPHA 93 CHEVRON
ATLAS
TIRES BATTERIES ACCESSORIES

CHEVROLET
PRICES

Missoula Downtown Historic District
Boundary Increase

Missoula Co., MT

photo # 0001



COOPER 700 ST

Missoula Downtown Historic District Boundary Increase
Missoula Co., MT
Photo# 0002



Missoula Downtown Historic District Boundary Increase
Missoula Co, MT
photo # 0003



missoula Downtown Historic District Boundary Increase
missoula Co., MT
Photo # 0004



missoula Downtown Historic District Boundary
Increase

Missoula Co., MT
photo # 0005



Missoula Downtown Historic District Boundary
Increase

Missoula Co., MT
Photo # 0006



Missoula Downtown Historic District Boundary Increase

Missoula Co., MT

Photo # 0007



Missoula Downtown Historic District Boundary Increase

Missoula Co., MT

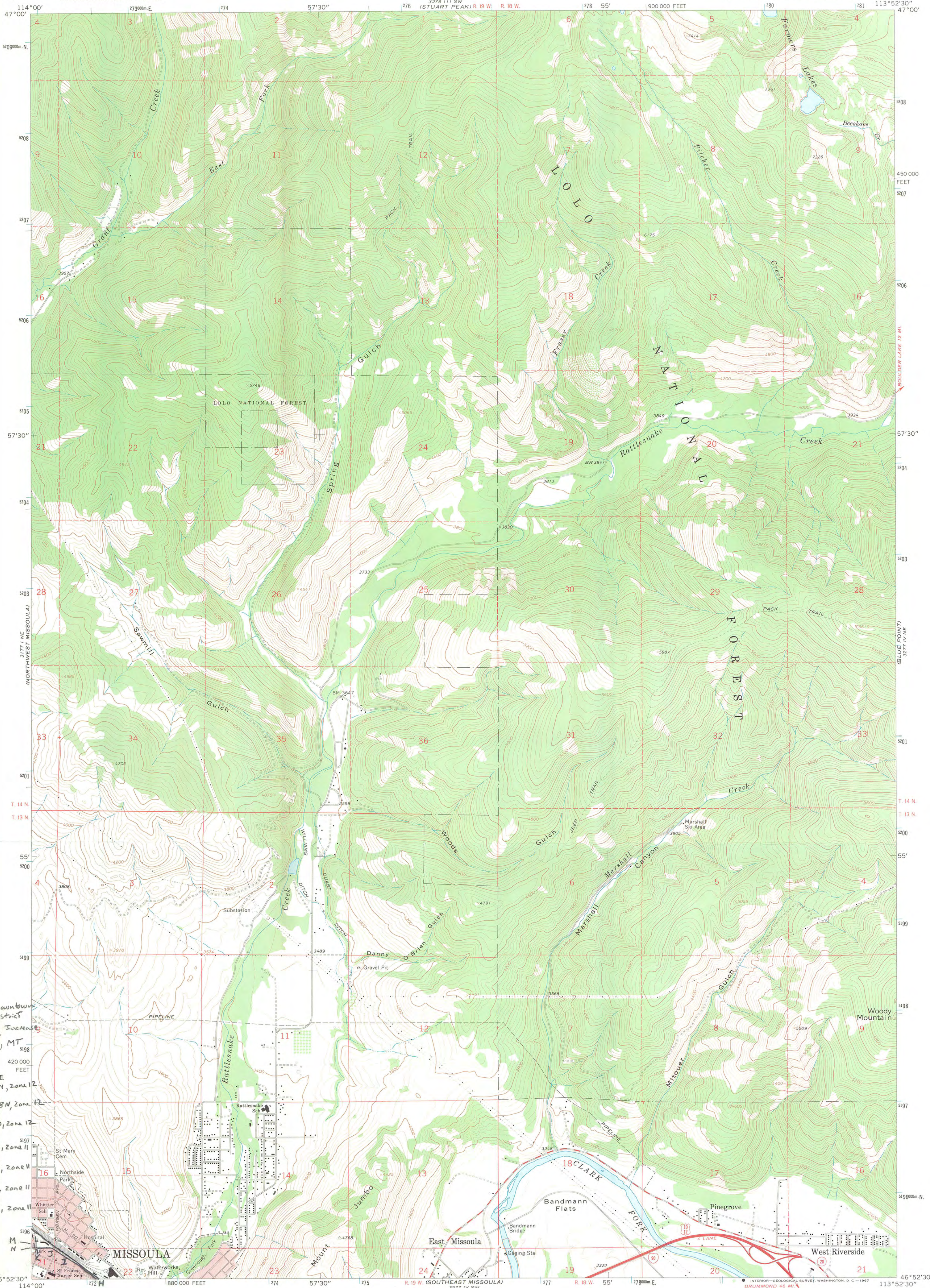
Photo# 0008



Missoula Downtown Historic District Boundary Increase

Missoula Co, MT

photo # 0009



Missoula Downtown Historic District Boundary, Inverness, Missoula Co., MT

H: 272045E
S195610N, Zone 12

I: 271710E
S195878N, Zone 12

J: 271591E
S195965N, Zone 12

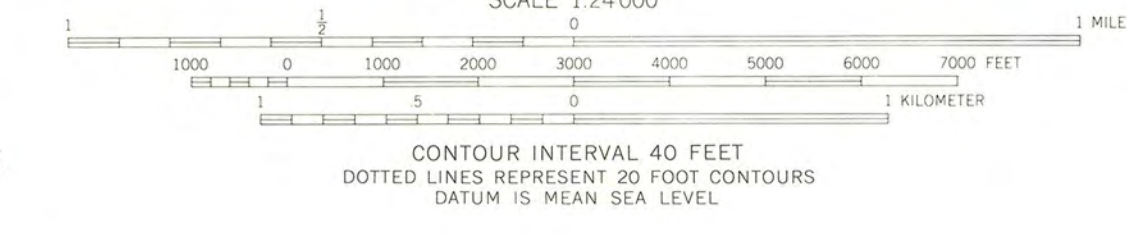
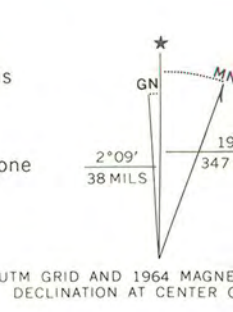
K: 728535E
S195970N, Zone 11

L: 728531E
S196024N, Zone 11

M: 728514E
S196072N, Zone 11

N: 728512E
S195969N, Zone 11

Mapped, edited, and published by the Geological Survey
Control by USGS and USC&GS
Topography by photogrammetric methods from aerial photographs taken 1961. Field checked 1964
Polyconic projection. 1927 North American datum 10,000-foot grid based on Montana coordinate system, central zone 1000-meter Universal Transverse Mercator grid ticks, zone 12, shown in blue
Red tint indicates areas in which only landmark buildings are shown
Fine red dashed lines indicate selected fence lines



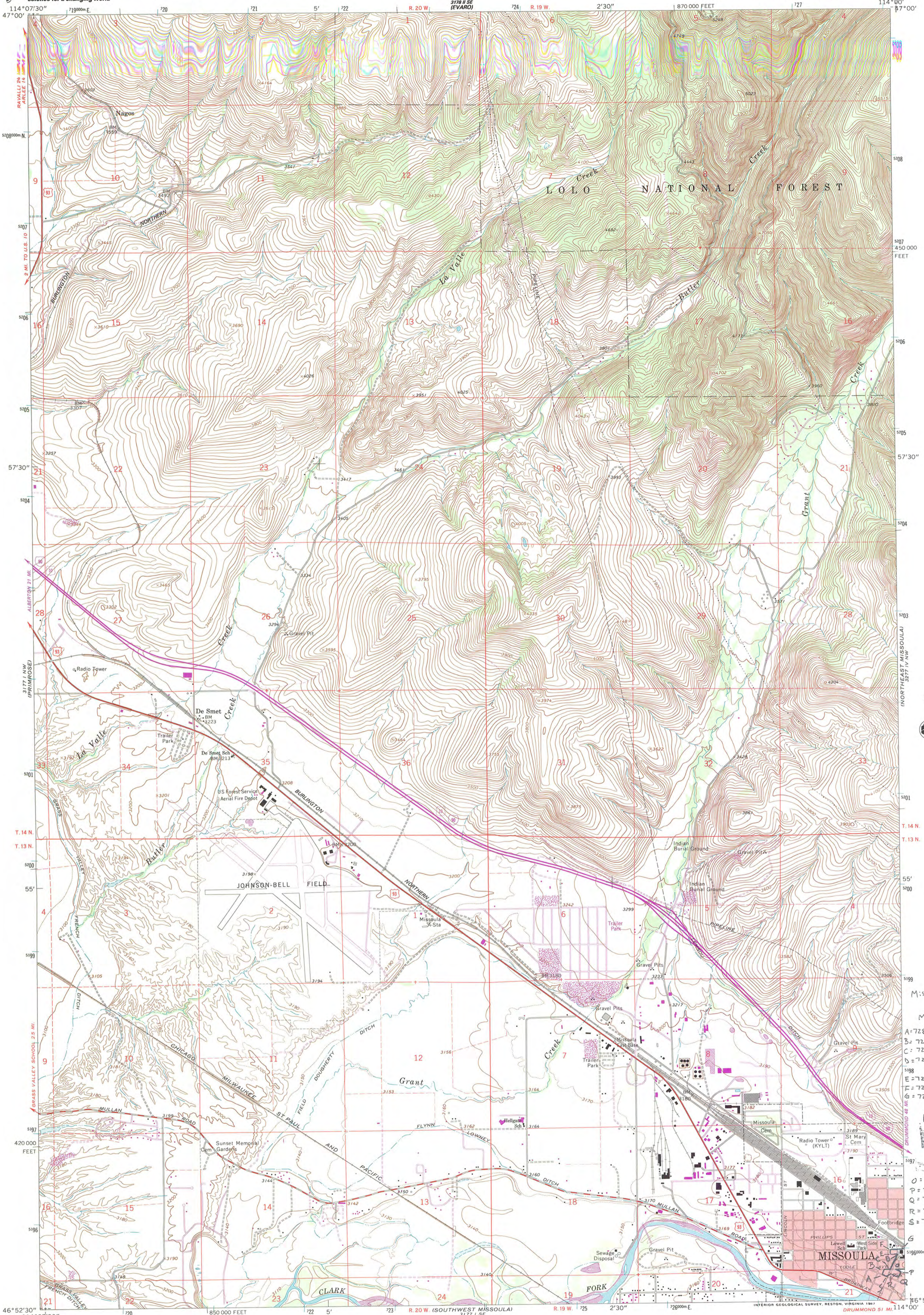
ROAD CLASSIFICATION

Heavy-duty	Light-duty
Medium-duty	Unimproved dirt
Interstate Route	U.S. Route
	Slate Route

NORTHEAST MISSOULA, MONT.
N4652.5—W11352.5/7.5
1964
AMS 3277 IV NW—SERIES V894

THIS MAP COMPLIES WITH NATIONAL MAP ACCURACY STANDARDS
FOR SALE BY U.S. GEOLOGICAL SURVEY, DENVER, COLORADO 80225, OR WASHINGTON, D.C. 20242
A FOLDER DESCRIBING TOPOGRAPHIC MAPS AND SYMBOLS IS AVAILABLE ON REQUEST

MISSOULA BLUEPRINT COMPANY
16-3 SOUTH AVENUE WEST
MISSOULA, MONTANA 59801
PHONE 549-0250



3771 11 SW (SOUTH PEAK)

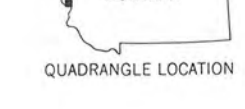
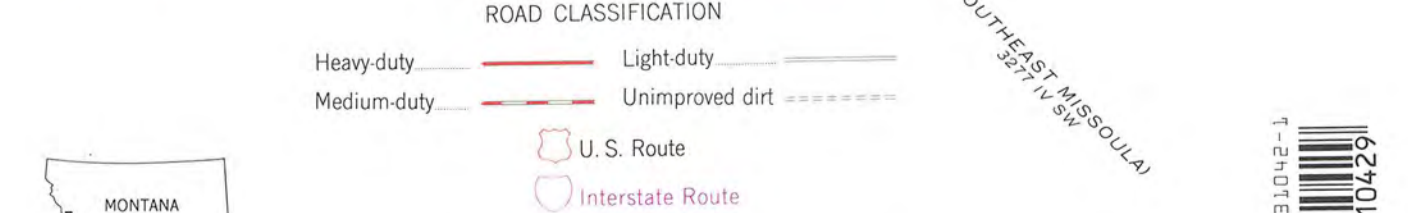
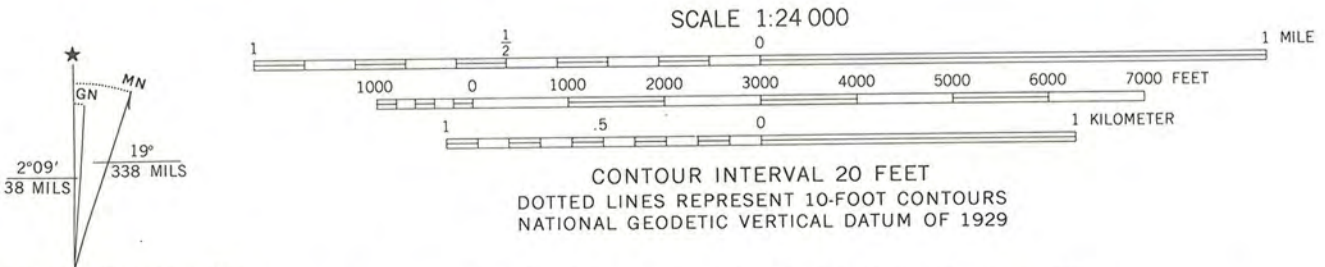
3771 11 SW (SOUTH PEAK)

Missoula Downtown Historic District Boundary Increase Missoula County, MT
A=728267E 5195903N Zone II
B=728284E 5195959N Zone II
C=728367E 5195963N Zone II
D=728435E 5196137N Zone II
E=728349E 5196130N Zone II
F=728348E 5196176N Zone II
G=728506E 5196181N Zone II

MONTANA OUTDOOR SPORTS
708 N. MAIN
HELENA, MT 59601
406-443-4119

O=728426E 5195962N Zone II
P=728474E 5195936N Zone II
Q=728452E 5195887N Zone II
R=728351E 5195919N Zone II
S=728213E 5195881N Zone II

Mapped, edited, and published by the Geological Survey
Control by USGS and NOS/NOAA
Topography by photogrammetric methods from aerial photographs taken 1961. Field checked 1964
Polyconic projection: 1927 North American Datum
10,000-foot grid based on Montana coordinate system, central zone
1000-meter Universal Transverse Mercator grid ticks, zone 11, shown in blue
Red tint indicates areas in which only landmark buildings are shown
Fine red dashed lines indicate selected fence lines
Revisions shown in purple compiled from aerial photographs taken 1976. Map edited 1978. This information not field checked
To place on the predicted North American Datum 1983 move the projection lines 12 meters north and 70 meters east as shown by dashed corner ticks



NORTHWEST MISSOULA, MONT.
46114-H1-TF-024

1964
PHOTOREVISED 1978
DMA 3177 I NE-SERIES V894



Big Sky. Big Land. Big History.
Montana
Historical Society



*Historic Preservation
Museum
Outreach & Interpretation
Publications
Research Center*

February 18, 2011

Carol Shull, Keeper
Carol, Keeper
National Register of Historic Places
National Park Service
1201 Eye St. NW
8th Floor (MS 2280)
Washington, D.C. 20005

Dear Ms. Shull,

Enclosed please find the following nomination for your consideration for listing in the National Register of Historic Places:

Missoula Downtown Historic District Boundary Increase, Missoula County, Montana.

Please be advised that I submit the enclosed nomination under your revised procedures. I notified the owners and public officials in excess of 30 days prior to the Preservation Review Board meeting and received no notarized objections to the nomination from the property owners of record. The Review Board unanimously recommended that this property be nominated and I concur with its recommendation.

Thank you for your consideration.

Sincerely,

Mark Baumbler, PhD
State Historic Preservation Officer

Enclosure

225 North Roberts Street
P.O. Box 201201
Helena, MT 59620-1201
(406) 444-2694
(406) 444-2696 FAX
montanahistoricalsociety.org