

<b>Historic Name:</b> Jacob Bringgold House		<b>County:</b> Goodhue
<b>Common Name:</b> Kenneth Harper Residence		<b>Community:</b> Pine Island City
<b>Owner's Name and Address:</b> Mrs. Kenneth Harper 314 SW 2nd Street Pine Island, MN 55963		<b>Address/<del>Legal Desc.</del>:</b> 314 SW 2nd St.
<b>Classification:</b>		<b>Acres:</b> Less than one acre
<b>Building</b> <input checked="" type="checkbox"/> <b>Structure</b> _____ <b>Object</b> _____ <b>District</b> _____		<b>Verbal Boundary Desc.:</b> Begin 652½ ft. north and 99 ft east of the southwest corner of NW¼ of SW¼, sec. 32, T109, R15; thence N246 ft. thence E. 122' 8/10 ft. thence S 246 ft. thence W. 122' 8/10 ft. to beginning; the Auditors' Subdivision of NW¼, SW¼, Sec. 32, T109, R15, Pine Island.
<b>Condition:</b>		
<b>Excellent</b> _____ <b>Good</b> <input checked="" type="checkbox"/> <b>Fair</b> _____ <b>Deteriorated</b> _____		
<b>Open to the Public:</b>	<b>Visible from the road:</b>	
<b>Yes</b> _____ <b>No</b> <input checked="" type="checkbox"/>	<b>Yes</b> <input checked="" type="checkbox"/> <b>No</b> _____	
<b>Occupied:</b>	<b>Present Use:</b>	
<b>Yes</b> <input checked="" type="checkbox"/> <b>No</b> _____	Private residence	
<b>History:</b>	<b>UTM Reference:</b>	
<b>Date Constructed:</b> 1906	<b>Original Owner:</b> Jacob Bringgold, Sr.	15/527980/4894060 Pine Island Quadrangle
<b>Architect/Builder:</b> Unknown	<b>Original Use:</b> Residential	
<b>Description:</b>		<b>Level of Significance:</b>
The Jacob Bringgold House is located on the north side of 2nd St. SW, to the west of 2nd Ave. SW in Pine Island City.		<b>Local</b> <input checked="" type="checkbox"/> _____
The Jacob Bringgold House is a 2½ story, wood-frame house in the Queen Anne style. It consists of a main section measuring 25 by 27 feet on the first floor (but one bay narrower on the upper floors), a wing projecting one bay out from its northwest corner, and a rear addition measuring 26 by 19½ feet. The house has a cross-gabled roof with its principal end oriented to the street. Its facade is two bays wide on the first floor, but only one bay wide on the second. For fenestration, it has a double sash-and-transom window on the first floor, a paired double-hung windows on the second floor, and a pair of eyebrow windows in the gable end. The house has such typical Queen Anne style features as: an open porch wrapping around the southeast sides of the main section, with turned (see continuation sheet)		<b>State</b> _____
		<b>Nation</b> _____
		<b>Status:</b>
		<b>Survey</b> _____ <b>Date</b> _____
		<b>Local</b> _____
		<b>State</b> <u>5/78</u>
		<b>Nat'l. Reg.</b> _____
		<b>Nat'l. Land.</b> _____
		<b>HABS/HAER</b> _____
<b>Significance:</b>		<b>Theme/s:</b>
The Jacob Bringgold House is significant both for its association with Jacob Bringgold, Sr., the first cheese maker in Pine Island City, and for its representing the type of residence that the prosperous inhabitants of southeastern Minnesota towns were building by the end of the 19th century.		<b>Primary</b> <u>Industry</u>
As dairying replaced wheat-growing as the principal form of agriculture in the region, such industries as cheese-making emerged to process the output of the farms. The city of Pine Island, in the southeast corner of Goodhue County, grew to be the leader of the industry, earning the title of "the cheese center of Minnesota" through the 30-odd factories operating in its vicinity by the 1930s. Jacob Bringgold Sr. was one of a number of Swiss immigrants who introduced the art of cheese-making to the area, and he is credited with being the first person to produce cheese in Pine Island, when he moved there in 1889.		<b>Secondary</b> <u>Agriculture</u>
		<b>Other</b> _____
		<b>Local Contact/Org.:</b>
		Mr. and Mrs. W.P. Iwen Pine Island, MN 55963
		<b>Prepared by and date:</b>
		B. Michael Zuckerman August 1978

**Description:**

posts, scroll-sawn spandrels, spindle-work portiers, spindle-supported balustrades, and a gable over the doorway; gable ends with fish-scale shingles and ornate fretwork filling the triangle at the roof peak; and a one-story, three-sided bay window projecting from the east end of the east wing.

---

**Significance:**



02506  
10

Jacob Bringgold House  
Pine Island, Goodhue County, MN  
B. Michael Zuckerman  
1978  
FEB 12 1980  
JAN 15 1979  
Minnesota Historical Society, 690  
Cedar Street, St. Paul, MN 55101  
Perspective View Facing North-West  
#02506

NOTICE: This material may be protected  
by copyright law (Title 17 U. S. Code).

Rural Goodhue County Multiple Resource  
Area



Please refer to the map in the  
Multiple Property Cover Sheet  
for this property

Multiple Property Cover Sheet Reference Number: 64000375

# National Register of Historic Places

## Note to the record

Additional Documentation: 2014

UNITED STATES DEPARTMENT OF THE INTERIOR  
NATIONAL PARK SERVICE

NATIONAL REGISTER OF HISTORIC PLACES  
EVALUATION/RETURN SHEET

REQUESTED ACTION: ADDITIONAL DOCUMENTATION

PROPERTY NAME: Burpee, Anna and Samuel Murry, House

MULTIPLE NAME: Rural Goodhue County MRA

STATE & COUNTY: MINNESOTA, Goodhue

DATE RECEIVED: 12/20/13      DATE OF PENDING LIST:  
DATE OF 16TH DAY:      DATE OF 45TH DAY: 2/05/14  
DATE OF WEEKLY LIST:

REFERENCE NUMBER: 80002051

NOMINATOR: STATE

REASONS FOR REVIEW:

APPEAL: N    DATA PROBLEM: N    LANDSCAPE: N    LESS THAN 50 YEARS: N  
OTHER: N    PDIL: N    PERIOD: N    PROGRAM UNAPPROVED: N  
REQUEST: N    SAMPLE: N    SLR DRAFT: N    NATIONAL: Y

COMMENT WAIVER: N

ACCEPT     RETURN     REJECT    \_\_\_\_\_ DATE

ABSTRACT/SUMMARY COMMENTS:

**Additional Documentation Approved**

RECOM./CRITERIA Accept  
REVIEWER Edson Beall      DISCIPLINE Historian  
TELEPHONE \_\_\_\_\_      DATE 2.5.14

DOCUMENTATION see attached comments Y/N see attached SLR Y/N

If a nomination is returned to the nominating authority, the nomination is no longer under consideration by the NPS.

**United States Department of the Interior**  
National Park Service

**National Register of Historic Places**  
**Continuation Sheet**

Section number 1 Page 1

Burpee, Ann and Samuel Murray, House
Name of Property
Goodhue County, MN
County and State
Name of multiple listing (if applicable)



**Reference Number:** 80002051

**Resource Name (Historic):** Burpee, Anna and Samuel Murray, House

**Comments:** This is the correct historic name. This documentation includes a corrected Statement of Significance. With the corrected Statement of Significance, the applicable criterion is C alone.

*Barbara Mitchell Howard*  
 \_\_\_\_\_  
 Barbara Mitchell Howard  
 Deputy State Historic Preservation Officer

*December 13, 2013*  
 \_\_\_\_\_  
 Date

**United States Department of the Interior**  
National Park Service

**National Register of Historic Places**  
**Continuation Sheet**

Burpee, Ann and Samuel Murray, House
Name of Property
Goodhue County, MN
County and State
Name of multiple listing (if applicable)

Section number 2 Page 1

---

**State:** Minnesota

**County:** Goodhue

**Location:** 314 Second Street SW, Pine Island

**United States Department of the Interior**  
National Park Service

**National Register of Historic Places**  
**Continuation Sheet**

Burpee, Anna and Samuel Murray,  
House

Name of Property  
Goodhue County, MN  
County and State

Name of multiple listing (if applicable)

Section number 7 Page 1

**Narrative Description**

The Anna and Samuel Murray Burpee House, built in 1895,<sup>1</sup> is located in Pine Island, Minnesota, at 314 Second Street SW, in the Auditors Subdivision of the NW ¼ of the SW ¼, Section 32, Township 109, Range 15.<sup>2</sup> It is on the north side of Second Street SW between Kenely Court SW to the west and the intersection of Second Street SW and Second Avenue SW to the east. Two blocks from the city's downtown, this section of Second Street SW is approximately 500 feet long; the first two houses on the north side of the street east of Kenely Court SW were built at approximately the same time as the Burpee House, which is the third house in this row. The houses on the south side of the street are from the mid-twentieth century.

The Burpee House sits on the front half of a moderately wooded lot measuring approximately 120 feet by 250 feet. The North Branch of the Middle Fork of the Zumbro River runs along the property's northern rear boundary. A detached, two-car garage from the late twentieth century is located east of the house.

The house is a 2½-story, wood-frame house in the Queen Anne style with cross gables, with the principal gable oriented to the south toward the street. The main section of the first floor measures 25 by 27 feet with a rear section of approximately 26 by 20 feet. The open front porch, with a gable and bargeboarding over the entryway, spans the width of the south wall and wraps around the southeast corner of the house (Photo #3). The porch is enhanced with decorative brackets and railings, turned posts, and spindlework on its railing balusters and open frieze (Photo #4). The south wall includes a large, single-pane window with a transom above. A single-story, three-sided bay window projects from the east wall on the first floor (Photo #3).

An exterior staircase, not original to the house, rises along the east wall to meet a second-story deck at the north rear of the house (Photos #2 and #3). A secondary hipped roof extends from the southwest corner and includes a stained-glass window with a single pane of glass surrounded by smaller panes, typical of the Queen Anne style (Photo #1). Larger second-floor windows include mock transom detailing. A projecting bay extends off the west wall with a double-hung window and stained-glass transom and decorative brackets below the bay (Photo #2). Gable ends have matching double-hung, one-over-one windows, with those on the south façade paired. Small, paired stained-glass windows, also single panes surrounded by smaller panes, appear in the gable peaks, along with three tiers of shingles in different styles. The eaves also have bargeboarding with spindles and roundels. The chimney, not original to the house, rises above the roof.

The interior of the house has retained much of its original woodwork, including door and window lintels, wainscoting, baseboards, and paneled doors. Double pocket doors separate the living room from the entrance hall (Photo #5). The staircase in the hall includes newel posts with decorative mitered newel caps and turned balusters (Photo #6).

<sup>1</sup> The house first appears in the Goodhue County tax records in 1896, but it is referred to in *The Pine Island Record* on 19 May 1895.

<sup>2</sup> 1896 Tax List, 20. Goodhue County [MN] Auditor, Tax Lists. State Archives, Minnesota Historical Society.



**United States Department of the Interior**  
National Park Service

**National Register of Historic Places**  
**Continuation Sheet**

Burpee, Anna and Samuel Murray,  
House

Name of Property  
Goodhue County, MN  
County and State

Name of multiple listing (if applicable)

Section number 7 Page 2

When compared to a photo from about 1910 (Historic Photo, Additional Documentation-3), the present-day Burpee House appears largely unaltered. The chimney, while larger than the original, remains in the same location. The added exterior staircase is relatively unobtrusive and is not visible from the front of the house. The house retains its integrity of design with a wrap-around porch, projecting bays, and irregular massing typical of the Queen Anne style. All of the original exterior ornamentation and much of the interior ornamentation and finishing appear to be intact, maintaining the integrity of the workmanship and the materials used.

The Burpee House keeps its integrity of location. The setting is slightly compromised by the adjacent garage and the mid-twentieth-century houses on the south side of the street, but its neighbor to the west, built in the same period as the Burpee House, remains, and the river bank north of the house has not been developed. The integrity of feeling and association is strong—the residential character of the street has remained unchanged.

**United States Department of the Interior**  
National Park Service

**National Register of Historic Places**  
**Continuation Sheet**

Burpee, Anna and Samuel Murray,  
House

Name of Property  
Goodhue County, MN  
County and State

Name of multiple listing (if applicable)

Section number 8 Page 1

**Applicable National Register Criteria**



- C. Property embodies the distinctive characteristics of a type, period, or method of construction or represents the work of a master, or possesses high artistic values, or represents a significant and distinguishable entity whose components lack individual distinction.

**Period of Significance:** 1895

**Statement of Significance**

Built in 1895 in the village of Pine Island, Minnesota, the Burpee House is significant under National Register Criterion C in the Area of Significance of Architecture as it embodies the distinctive characteristics of the Queen Anne style and is a noteworthy example of this style in Pine Island. Its period of significance is 1895 and it is locally significant.

Located at 314 SW Second Street (formerly White Street),<sup>1</sup> the Burpee House is part of Pine Island's Auditors Subdivision,<sup>2</sup> an expansion after the community was initially platted in 1856-57.<sup>3</sup> Located in southeastern Minnesota, Pine Island is in the southeast corner of Goodhue County, at the confluence of two middle branches of the Zumbro River. The city's name comes from a Dakotah word meaning "island of pines;" the two branches of the river appeared to create an island where white pine trees grew. The surrounding area was predominantly hardwood timber.<sup>4</sup>

First settled in 1854, the townsite quickly grew, taking advantage of the area's natural resources.<sup>5</sup> The first saw mill was built in 1856 for processing the area's lumber; it was dismantled in 1901 when there was little timber left.<sup>6</sup> The rolling pastures and rivers were well-suited for cattle, and Pine Island eventually became known as the "Cheese Center of Minnesota."<sup>7</sup> In 1878, the Chicago and North Western Railway Company built a branch line to the village and, in the same year, the village of Pine Island was incorporated separately from the township.<sup>8</sup>

<sup>1</sup> *Plat Book of Goodhue County, Minnesota* (Minneapolis: C.M. Foote & Co., 1894), 44-45.

<sup>2</sup> 1896 Tax List, 20. Goodhue County [MN] Auditor, Tax Lists. State Archives, Minnesota Historical Society.

<sup>3</sup> Ralph W. Holmes, contrib., *History of Dakota and Goodhue Counties*. (Chicago: H.C. Cooper, Jr., & Co., 1910), 204.

<sup>4</sup> Holmes, 202.

<sup>5</sup> Mrs. C.T. Mondale, "Pine Island, 1874-1971." In *Goodhue County Historical News*, vol. 5, no. 2 June 1971, 1, Minnesota Historical Society.

<sup>6</sup> Holmes, 203.

<sup>7</sup> Mondale, 1.

<sup>8</sup> Holmes, 205.

**United States Department of the Interior**  
National Park Service

**National Register of Historic Places**  
**Continuation Sheet**

Burpee, Anna Smith and Samuel Murray,  
House

Name of Property  
Goodhue County, MN  
County and State

Name of multiple listing (if applicable)

Section number 8 Page 2

In 1895, *The Pine Island Record* commented on the growing village:

Did you see the town grow this week? People have to keep their eyes open or some day they will get lost in the shuffle. The old timers who prefer pastures to streets and new buildings will soon be able to retire to suburbs.<sup>9</sup>

That same year, Samuel Murray Burpee and his wife, Anna Smith Burpee, built their house in the subdivision on White Street.<sup>10</sup> Samuel Murray Burpee was a local merchant who, except for a brief stint in South Dakota, lived in Pine Island his entire life.<sup>11</sup> His wife Anna was a farmer's daughter<sup>12</sup> who grew up in Pine Island and, after graduating from the Winona Normal School in 1889, returned to Pine Island to teach for three years. They were married in 1892<sup>13</sup> and their house, listed under Anna Burpee's name, first appeared in the county tax records in 1896.<sup>14</sup>

The two and one-half story, wood-frame house was built in the Queen Anne style. This style was first popularized in the United States by the British Executive Commissioner's Building at the Philadelphia Centennial Exposition of 1876 and praised by the *American Builder* for its "wonderful adaptability to this country."<sup>15</sup> Its popularity spread throughout the United States with pattern books in the 1880s.<sup>16</sup> In 1889, architect Louis H. Gibson, writing about the recent emergence of the style, said:

The Queen Anne style . . . meant anything—particularly something that was pointed, erratic, and unusual. It, however, did a good work. It enabled architects to get out of the old beaten paths. . . . The name "Queen Anne" was the passage from an old conservatism . . . to something that was fresh and attractive.<sup>17</sup>

The Burpee House reflects the Queen Anne style with its multi-sloped roof and a wrap-around porch that accentuates the asymmetry of the house. It includes typical Queen Anne style ornamentation such as spindlework on the porch frieze, railing balusters, and supports, along with lace-like porch brackets and bargeboarding on the eaves. The shingled gables and projecting bays offer the varied elevation texture typical of the Queen Anne style. Windows with a large center pane surrounded by smaller panes on the second floor and at the gable peaks are also characteristic of the style.<sup>18</sup>

The Burpees and their two children lived at the house until 1901 when Samuel Murray Burpee committed suicide at the age of 33.<sup>19</sup> At the time of his death, Burpee was considered "one of the solid

<sup>9</sup> *The Pine Island Record (PIR)*, 12 April 1895, unnumbered page.

<sup>10</sup> *PIR*, 10 May 1895, unnumbered page.

<sup>11</sup> *PIR*, 21 November 1901, 1.

<sup>12</sup> United States Census of 1870.

<sup>13</sup> *PIR*, "Married," 28 October 1892, 1.

<sup>14</sup> 1896 Tax List, 20.

<sup>15</sup> Marcus Whiffen, *American Architecture since 1780: A Guide to the Styles*. rev. ed. (Cambridge, MA: The MIT Press, 1969), 117-118.

<sup>16</sup> Virginia and Lee McAlester, *A Field Guide to American Houses* (New York: Alfred A. Knopf, 1988), 268.

<sup>17</sup> Louis H. Gibson, *Convenient Houses with Fifty Plans for the Housekeeper* (New York: Thomas Y. Crowell & Co., 1889), 104-105.

<sup>18</sup> McAlester, 263-266.

<sup>19</sup> *PIR*, "Suicide," 14 November 1901, 1.

**United States Department of the Interior**  
National Park Service

**National Register of Historic Places**  
**Continuation Sheet**

Burpee, Anna Smith and Samuel Murray,  
House

Name of Property  
Goodhue County, MN  
County and State

Name of multiple listing (if applicable)

Section number 8 Page 3

businessmen of the town." The funeral was held at the house<sup>20</sup> and Anna continued to live there with her children and her father, Oscar E. Smith until at least 1910.<sup>21</sup> In the 1905 Minnesota state census, her occupation is listed as "capitalist;" her father's is "landlord."<sup>22</sup> In the 1910 federal census, both Anna and her father's occupation are listed as "own income."<sup>23</sup> In 1914, Anna Burpee sold the house to John and Anna Fitzgerald with a \$3,000 mortgage that was paid off in 1919.<sup>24</sup> By 1920, Anna Burpee had moved to Iowa with her two children,<sup>25</sup> and in 1930 she was living with her daughter and son-in-law in Nebraska.<sup>26</sup>

**Summary**

The Burpee House is eligible for the National Register under Criterion C in the Area of Significance of Architecture, embodying the key characteristics of the Queen Anne style during the height of its popularity. It is a noteworthy example of this architectural style in the community of Pine Island.

<sup>20</sup> *PIR*, "A Sketch of the Career of the late S.M. Burpee," 21 November 1901, 1.

<sup>21</sup> United States Census of 1910.

<sup>22</sup> Minnesota State Census of 1905.

<sup>23</sup> United States Census of 1910.

<sup>24</sup> Property abstract notes, provided by owner Patricia Kimble.

<sup>25</sup> United States Census of 1920.

<sup>26</sup> United States Census of 1930.

**United States Department of the Interior**  
National Park Service

**National Register of Historic Places**  
**Continuation Sheet**

Burpee, Anna and Samuel Murray House
Name of Property
Goodhue County, MN
County and State
Name of multiple listing (if applicable)

Section number 9 Page 1

**Major Bibliographical References**

PUBLISHED SOURCES

Gibson, Louis H. *Convenient Houses with Fifty Plans for the Housekeeper*. New York: Thomas Y. Crowell & Co., 1889.

Holmes, Ralph W., contrib., *History of Dakota and Goodhue Counties*. Chicago: H.C. Cooper, Jr., & Co., 1910.

McAlester, Virginia and Lee, *A Field Guide to American Houses*. New York: Alfred A. Knopf, 1988.

Mondale, C.T., Mrs., "Pine Island, 1874-1971." In *Goodhue County Historical News*, vol.5, no. 2, June 1971. Minnesota Historical Society, Saint Paul.

*The Pine Island Record*, 1892-1901.

*Plat Book of Goodhue County, Minnesota*. Minneapolis: C.M. Foote & Co., 1894.

Whiffen, Marcus. *American Architecture since 1780: A Guide to the Styles*, rev. ed. Cambridge, MA: The MIT Press, 1969.

UNPUBLISHED SOURCES

Fifteenth Census of the United States (1930).

Fourteenth Census of the United States (1920).

Goodhue County [MN] Auditor. Tax Lists, 1896. State Archives, Minnesota Historical Society, Saint Paul.

Ninth Census of the United States (1870).

Minnesota State Census of 1905.

Pine Island promotional material [1910?], photocopy provided by Mary Bollman.

Property Abstract notes, provided by owner Patricia Kimble.

Thirteenth Census of the United States (1910).

**United States Department of the Interior**  
National Park Service

Burpee, Anna and Samuel Murray House
Name of Property
Goodhue County, MN
County and State
Name of multiple listing (if applicable)

**National Register of Historic Places**  
**Continuation Sheet**

Section number 9 Page 2

---

**Previous documentation on file (NPS):**

- preliminary determination of individual listing (36 CFR 67) has been requested
- previously listed in the National Register
- previously determined eligible by the National Register
- designated a National Historic Landmark
- recorded by Historic American Buildings Survey # \_\_\_\_\_
- recorded by Historic American Engineering Record # \_\_\_\_\_
- recorded by Historic American Landscape Survey # \_\_\_\_\_

**Primary location of additional data:**

- State Historic Preservation Office
- Other State agency
- Federal agency
- Local government
- University
- Other

Name of repository: Minnesota Historical Society Library

**Historic Resources Survey Number (if assigned):** GD-PIC-053



**United States Department of the Interior  
National Park Service**

**National Register of Historic Places  
Continuation Sheet**

Burpee, Anna and Samuel Murray,  
House

Name of Property  
Goodhue County, MN  
County and State

Name of multiple listing (if applicable)

Section number 10 Page 1

**Geographical Data**

**Acreage of Property** less than one acre

**Latitude/Longitude Coordinates**

Latitude: 44.201260

Longitude: -92.650665

United States Department of the Interior  
National Park Service

National Register of Historic Places  
Continuation Sheet

Burpee, Anna and Samuel Murray,  
House

Name of Property  
Goodhue County, MN  
County and State

Name of multiple listing (if applicable)

Section number Additional Documentation Page 1

Photographs

Photo Log

**Name of Property:** Anna and Samuel Murray Burpee House

**City or Vicinity:** Pine Island

**County:** Goodhue County                      **State:** MN

**Name of Photographer:** Denis Gardner

**Date of Photographs:** 23 October 2013

**Location of Original Digital Files:** Minnesota SHPO, 345 Kellogg Blvd. West, St Paul, MN 55102

**Number of Photographs:** 6

**Description of Photograph(s) and number, include description of view indicating direction of camera:**

Photo #1  
South façade, camera facing north

Photo #2  
North elevation (left) and west elevation (right), camera facing southeast

Photo #3  
South façade (left) and east elevation (right), camera facing northwest

Photo #4  
Porch detail, camera facing west

Photo #5  
Interior living room pocket doors, camera facing southwest

Photo #6  
Interior staircase, camera facing southeast

United States Department of the Interior  
National Park Service

National Register of Historic Places  
Continuation Sheet

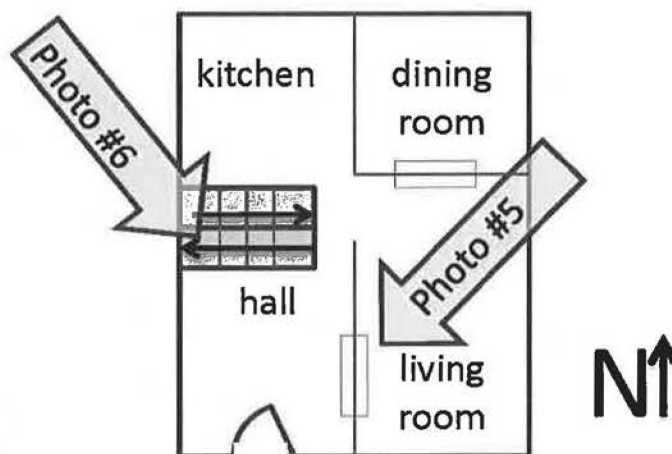
Burpee, Anna and Samuel Murray,  
House

Name of Property  
Goodhue County, MN  
County and State

Name of multiple listing (if applicable)

Section number Additional Documentation Page 2

SKETCH MAP



United States Department of the Interior  
National Park Service

National Register of Historic Places  
Continuation Sheet

Burpee, Anna and Samuel Murray,  
House

Name of Property  
Goodhue County, MN  
County and State

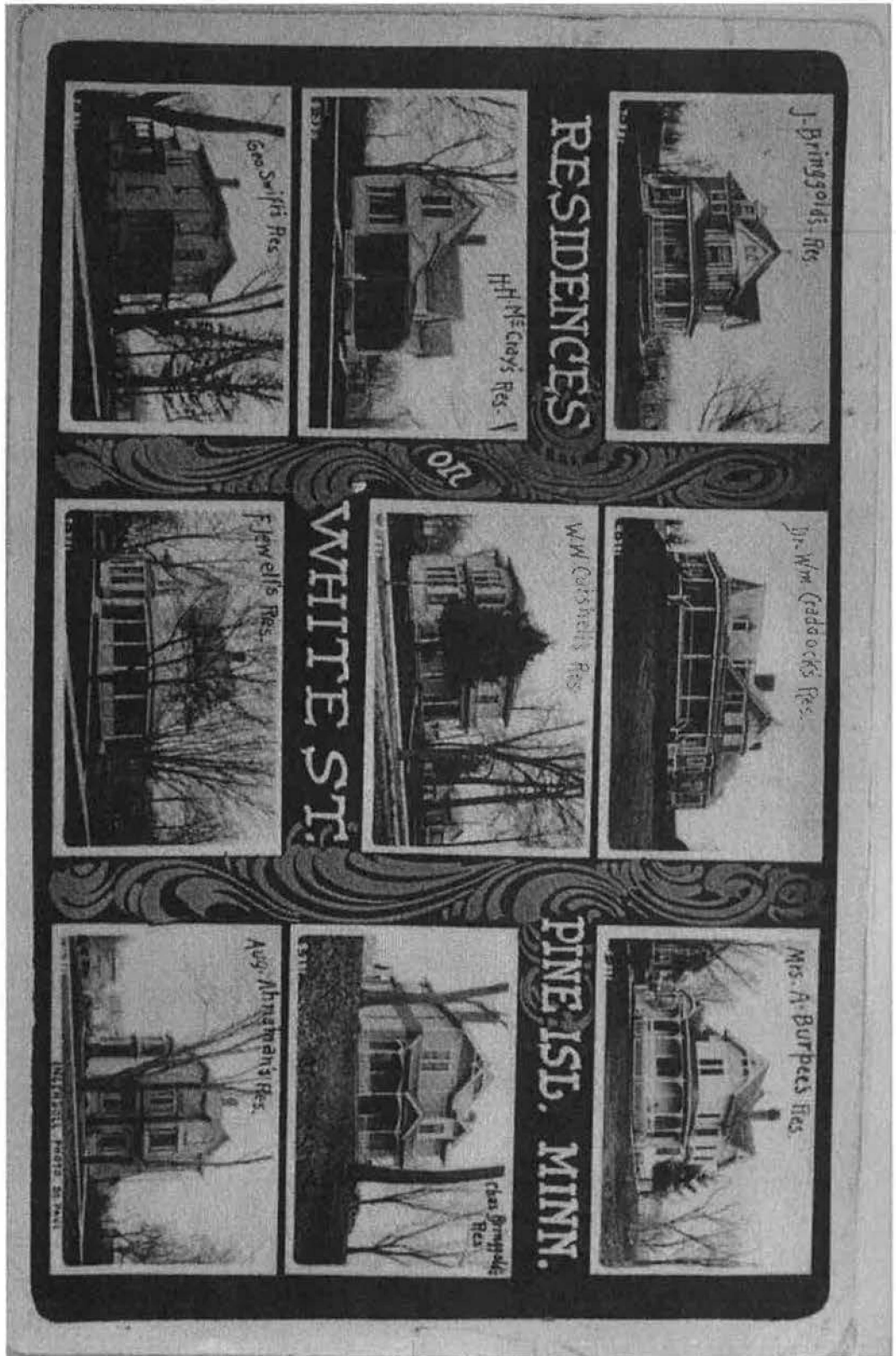
Name of multiple listing (if applicable)

Section number Additional Documentation

Page 3

HISTORIC PHOTO

Photocopy of Pine Island, Minnesota promotional material, circa 1910. Burpee House is in upper-right corner.







314 2nd St SW, Pine Island, MN 55963



Sign in  
2 of 5



Directions My places Nearby

Road Aerial Traffic

Fullscreen Print Share

314 2nd St SW, Pine Island, MN 55963

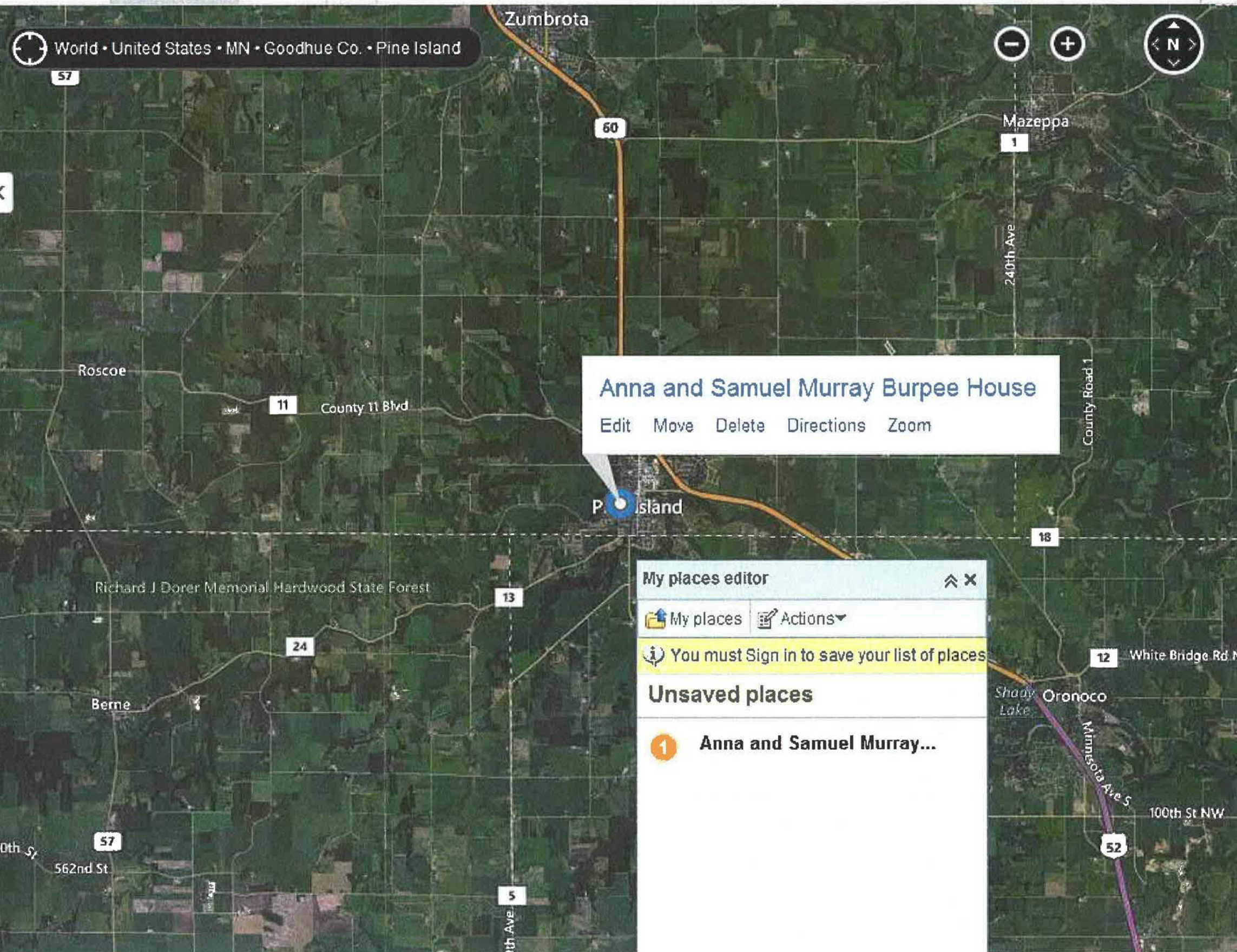
44.201260,-92.650665

Directions · Send · More  
Not what you wanted?

Report a problem

NEARBY

- see+do
- eat+drink
- shop
- picks for you



**Anna and Samuel Murray Burpee House**  
 Edit Move Delete Directions Zoom

**My places editor**

My places Actions

You must Sign in to save your list of places

**Unsaved places**

- Anna and Samuel Murray...





314 2nd St SW, Pine Island, MN 55963



Sign in  
2 of 5



Directions My places Nearby

Road Aerial Traffic

Fullscreen Print Share

314 2nd St SW, Pine Island, MN 55963

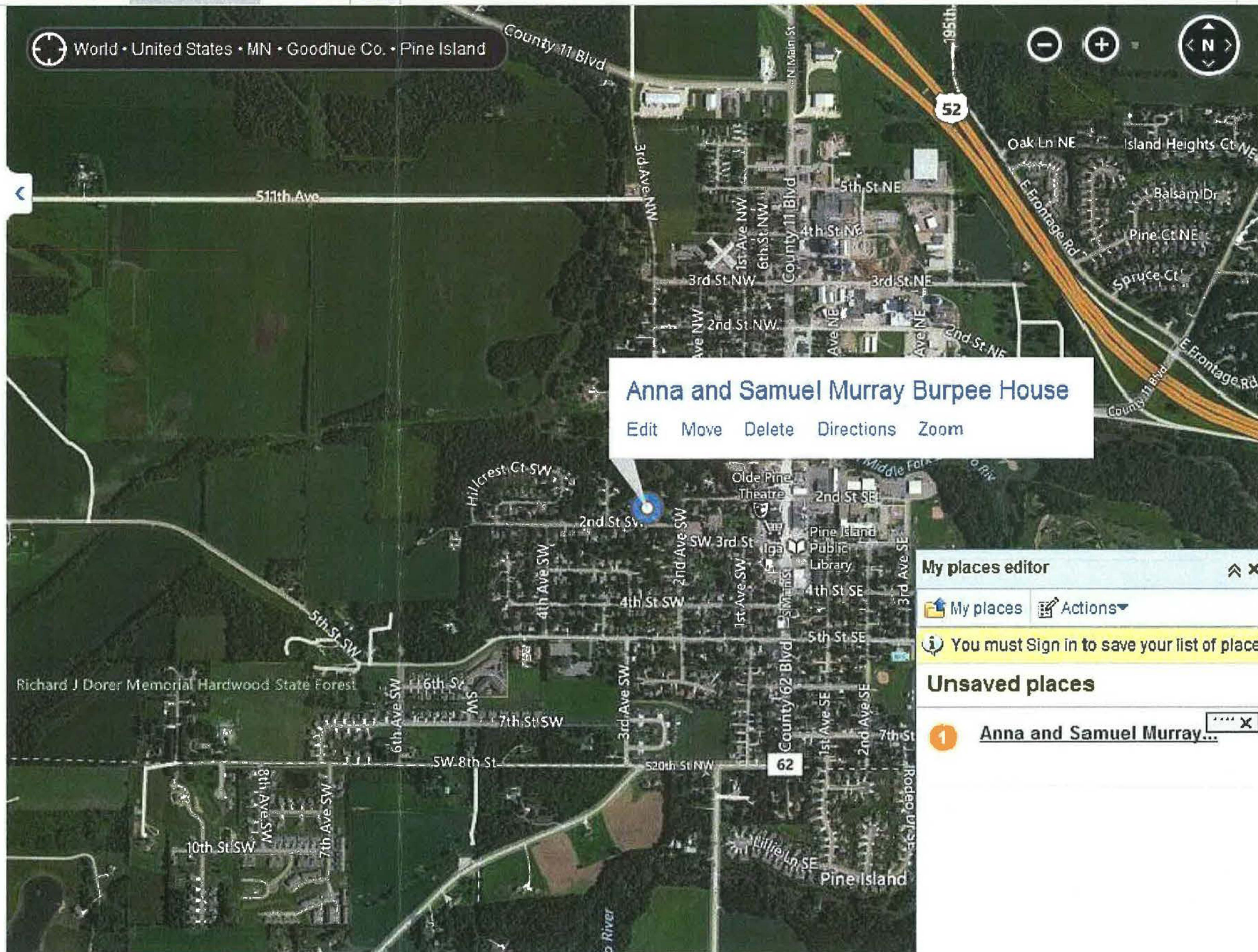
44.201260,-92.650665

Directions · Send · More  
Not what you wanted?

Report a problem

NEARBY

- see+do
- eat+drink
- shop
- picks for you







314 2nd St SW, Pine Island, MN 55963



Sign in  
2 of 5



Directions

My places

Nearby

Road

Aerial

Traffic



Fullscreen

Print

Share



314 2nd St SW, Pine Island, MN 55963

44.201260,-92.650665

Directions · Send · More  
Not what you wanted?

Report a problem

NEARBY

see+do  
eat+drink  
shop  
picks for you

World · United States · MN · Goodhue Co. · Pine Island



**My places editor** [Close]

My places [Actions]

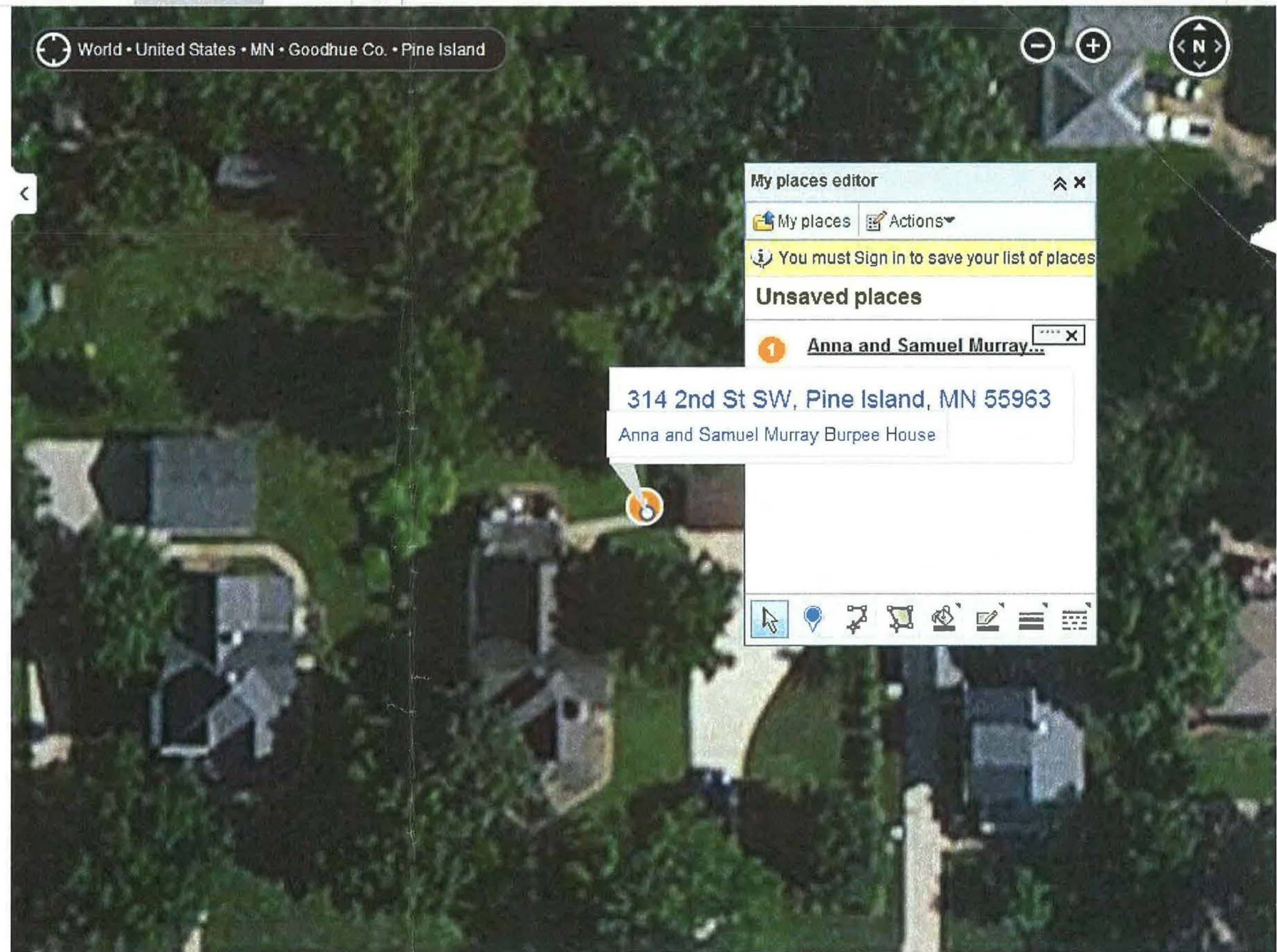
You must Sign in to save your list of places

**Unsaved places**

1 Anna and Samuel Murray... [Close]

314 2nd St SW, Pine Island, MN 55963  
Anna and Samuel Murray Burpee House

[Map tools: pan, location, link, share, print, etc.]







314

434  
W  
U  
M  
P





















National Register of Historic Places  
Memo to File

# Correspondence

The Correspondence consists of communications from (and possibly to) the nominating authority, notes from the staff of the National Register of Historic Places, and/or other material the National Register of Historic Places received associated with the property.

Correspondence may also include information from other sources, drafts of the nomination, letters of support or objection, memorandums, and ephemera which document the efforts to recognize the property.



Property

Rural Goodhue County Multiple Resource Area (Partial Inventory)

2nd Central

State

MN (Goodhue)

Working Number

1.15.79.109

TECHNICAL

Photos

28

Maps

13

CONTROL

HISTORIAN

Impressive MR nomination - awardedly partial - of historical resources in southeastern Minnesota county w/ rich agricultural + ethnic history. Properties include churches, farm buildings, public + commercial structures - no archeological sites (specifically excluded) or districts (because area is rural). All eminently eligible, well described, w/ significance clearly analyzed. Survey has resulted in excellent general

ARCHITECTURAL HISTORIAN

Call, then accept

deficiencies corrected - see continuation sheet rec'd 2/18/80

O'Connell 1/24/80

historical discussion - first an overall view, then theme-by-theme discussion with specific resources mentioned in their historical context. Mapping, HBD's, + photographic coverage excellent.

ARCHEOLOGIST

1 small technical problem: 1954 + 1957 additions to Cannon Falls Elem. School not mentioned on inventory form, possibly not included. Boundary may need to be redrawn to take them in.

OTHER

HAER

Inventory \_\_\_\_\_

Review \_\_\_\_\_

REVIEW UNIT CHIEF

BRANCH CHIEF

KEEPER

National Register Write-up

2-3-81

Send-back \_\_\_\_\_

Re-submit \_\_\_\_\_

Entered

FEB 12 1980

Federal Register Entry

INT:2106-74

ACTION:

Partial Nomination Screen

01 Refnum 80002051

02 Certcd LI 03 Certdate 1980/02/12 04 Day45

05 Name Bringhold, Jacob, House

*Old Name*



06 Address 314 2nd St., SW

07 City Pine Island

08 Vicinity 09 Restrict

10 Statedc MN 11 Countycd MN0049 Goodhue

12 Multname Rural Goodhue County MRA

Minnesota Historical Society  
State Historic Preservation Office  
345 Kellogg Blvd West, St. Paul, Minnesota 55102  
651/259-3451



**TO:** Carol Shull, Keeper  
National Register of Historic Places

**FROM:** Denis P. Gardner

**DATE:** December 13, 2013

**NAME OF PROPERTY:** Burpee, Anna and Samuel Murray, House (please see coments below)

**COUNTY AND STATE:** Goodhue County, Minnesota

**SUBJECT:** National Register:  
 Nomination  
 Multiple Property Documentation Form  
 Request for determination of eligibility  
 Request for removal (Reference No. )  
 Nomination resubmission  
 Boundary increase/decrease (Reference No. )  
 Additional documentation (Reference No. 80002051)

**DOCUMENTATION:**

Original National Register of Historic Places Registration Form  
 Multiple Property Documentation Form  
 Continuation Sheets  
 Removal Documentation  
 Photographs  
 CD w/ image files  
 Original ~~XXXXXX~~ Bing Map  
 Sketch map(s)  
 Correspondence  
 Owner Objection  
The enclosed owner objections  
Do  Do not  constitute a majority of property owners

**STAFF COMMENTS:**

In 1979, the Minnesota State Historic Preservation Office (SHPO) nominated the Jacob Bringgold House to the National Register. The property subsequently was listed in February 1980. The Jacob Bringgold House was nominated for its architecture (Criterion C) as a distinctive example of the Queen Anne style in Pine Island. It also was nominated to the National Register for its association with Jacob Bringgold (Criterion B), a prominent personality in Pine Island.

Recently, current SHPO staff learned that the house that was nominated in 1979 was not in fact the Jacob Bringgold House. Instead, the residence that was nominated is located immediately to the east of the Jacob Bringgold House. It is the Anna and Samuel Murray Burpee House. In other words, the house that rests on the plot described by the verbal boundary description in the National Register nomination for the Jacob Bringgold House is actually the Anna and Samuel Murray Burpee House. Plainly said, when SHPO completed the nomination, it was looking at the wrong house.

The architectural description found in the National Register nomination is in fact correct (SHPO described the house it was looking at, the Burpee House), but the part of the nomination narrative that speaks to Jacob Bringgold is not applicable. Fortunately, although SHPO nominated the incorrect residence, the Anna and Samuel Murray Burpee House is one of the most distinctive Queen Anne-style residences in the community of Pine Island, so having it as part of the National Register seems appropriate (the owners of the Burpee House have long known that their house is the one actually in the National Register).

As a result of the mistake noted above, the SHPO is submitting the attached amendment to the Jacob Bringgold House National Register nomination. The amendment includes the correct name, "Anna and Samuel Murray Burpee House." The amendment also includes an updated statement of significance that speaks directly to the historic significance of the Burpee House, its architecture. Although the architectural description in the 1979 nomination is correct, with this amendment the SHPO has more thoroughly detailed the appearance of the house. Additional information includes updated hard copy photos, gold disk with TIF photographs, photographic log, photographic key, and Bing map.