



New More
Lights 100s

It's beige

Denny Old
LIQUOR

LIQUOR
(SPECIALTY)

W. 10th St

ICE

Streetscape, North 8th Street

Railroad Hist Dist

Richmond, IN

Lucian Szlizewski

1984

Lucian Szlizewski

Looking south down N 8th st.

Photo 1 of 36



Streetscape, Ft. Wayne Avenue

Railroad Hist Dist

Richmond, IN

Lucian Szlizewski

1984

Lucian Szlizewski

Looking south down Ft. Wayne Ave

Photo 2 of 36



Streetscape, N. E Street

Railroad Hist Dist

Richmond, IN

Lucian Szlizewski

1984

Lucian Szlizewski

Looking east along North E Street. Camera

at the intersection of Ft. Wayne & N. 8th.

Photo 30 of 36



Train tracks of the Norfolk & Southern
Railroad Hist Dist

Richmond, IN

Lucian Szlizewski

1984

Lucian Szlizewski

Looking east toward Railroad Station.

Camera just west of N. 8th Street.

Photo 4 of 36



Commercial Buildings on North E St,
Railroad Hist Dist
Richmond, IN
Ron Stiller
April 1984
Ron Stiller
Looking southeast at north facades

Photo S of 36



RICHMOND GLASS CO.

The RICHMOND GLASS CO.

ID'S

168 FT. WAYNE AVE, Railroad Hist Dist

Richmond, IN

Ron Stiller

April 1984

Ron Stiller

Looking northwest at front facade

Photo 6 of 36

Miller Brothers Hardware Co. Building, Richmond, Ind.

Roofed entirely with "SCOTT'S EXTRA COATED
HAMMERED OPEN HEARTH Roofing Tin.
Approximately 85,000 sq. ft. of tin used.



170-178 FT WAYNE AVENUE

Miller Brothers Hardware c. 1915

Railroad Hist Dist

Richmond, IN

Historic photo. Wayne County Hist Society

c. 1915

Lucian Szlizewski (copy)

Looking north at front facade

On map #13

Photo 7 of 36

IAL SUPPLY Inc.

Richmond
INDUSTRIAL
Supply

WILCOCKSON
BROS
INC

0.



170-178 FT. WAYNE AVE

Millers Brothers Hardware (Now Richmond
Industrial Supply), Railroad Hist Dist

Richmond, IN

Ron Stiller

April 1984

Ron Stiller

Looking north at south side and east front

Photo 3 of 36



170-178 FT. WAYNE AVE

Millers Bros Hardware Co. (now Richmond
Industrial Supply) Railroad Hist Dist

170-178 Ft Wayne Ave, Richmond, IN

Lucian Szlizewski

1984

Lucian Szlizewski

Looking Northeast at the rear of building

Photo 9 of 36



JACOB H. LICHTENFELS BLDG, Railroad Hist Dist
175 Ft. Wayne Ave, Richmond, IN

Lucian Szlizewski
1984

Lucian Szlizewski

Looking East at West facade

Photo 10 of 36



RETAIL
SAVE up to 50%

**PHILLIPS
CARPET**

RESIDENTIAL
Floor Coverings

FURNITURE & APPLIANCES

USE
OTHER
DOOR

NEW & USED FURNITURE

Buy-SELL
& TRADE

New 2 P.C.
LIVING ROOM
SUITES \$2995

Antiques

OPEN
DAILY
9-5



Commercial Building 177-181 Ft. Wayne Ave

Railroad Hist Dist

Richmond, IN

Ron Stiller

April 1984

Ron Stiller

Looking east at west facades

Photo 11 of 36



BUY
SELL
TRADE

185

We Buy
Complete
HOUSEHOLD
FURNITURE

WHOLE SALE
SAVE up to 50!

and

RETAIL
SAVE up to 50!

PHILLIPS
CARPET

PHILLIPS
CARPET

FURNITURE & APPLIANCES

Commercial Bldgs 183-185 Ft Wayne Ave,

Railroad Hist Dist

Richmond, IN

Ron Stiller

April 1984

Ron Stiller

Looking east at west facade

Photo 129 36



STEELES FURNITURE

ENTRANCE

ENTRANCE

STEELES FURNITURE

USED
FURNITURE

Commercial Bldgs 187-191 Ft Wayne Ave

Railroad Hist Dist

Richmond, IN

Ron Stiller

April 1984

Ron Stiller

Looking east at west facade

Photos 13 of 36



Photo 14 of 36 14

JOHN ROBERTS BLDG
193 FT. WAYNE AVE
RICHMOND RAILROAD H.T.D.

RICHMOND, IN

KATHERINE JOURDAN

AUG 1984 HISTORIC LANDMARKS

LOOKING EAST AT WEST FACADE

STEELE'S FURNITURE
NEW and USED 966-6859 BUY and SELL

KANTBEAT
CLEANERS TAILORS

DRESSING
LENDING
REPAIRS and
ALTERATIONS
Phone 966-8111



JOHN ROBERTS BLDG

193-Ft. WAYNE AVE, rear entrance on N 8th
St., Railroad Hist Dist (408-410 N. 8th ST.)

Richmond, IN

Ron Stiller

April 1984

Ron Stiller

Looking west at east facade



HOTEL CHICKADEE
TRC
PAULEE RESTAURANT

HOTEL CHICKADEE
BY THE TAILOR SHOP
HOTEL
NO. 577 ALTIORATIONS REPAIRS

187

50000
Machinery

Machinery

195-199 FT WAYNE (R to L)

RICHMOND RAILROAD H.D.

RICHMOND, IN

KATHERINE JOURDAN

AUG, 1986 HISTORIC LANDMARKS

LOOKING EAST AT WEST FACADE

Photo 16
of 36



HOSE HOUSE NO. 1.

R.F.D. Hose House #1, 400 N 8th St

Railroad Hist Dist

Richmond, IN

Historic photo, Wayne Cty Hist Society

c. 1895

Lucian Szlizewski (copy)

Looking west at east facade

PHOTO 17
OF 36

H ST



Sugar Shack

PAINT STORE

STEELE'S FURNITURE
NEW - USED

R.F.D. Hose House #1, ^{400, 402, 404 N. 8TH ST}
(Now American Legion Post)

Commercial Bldgs, Railroad Hist Dist

Richmond, IN

Ron Stiller

April 1984

Ron Stiller

Looking west at east facade

PHOTO 18

of 36



DOWN USED APPLIANCE CENTER
LOUIS DAVIS
MANAGER - MECH. REPAIRS
19 years in Richmond
Phone 962 020
WE BUY & SELL

U **CIRCLE YOU HELP CENTER**

UFC
STAR

THE GAME CENTER

YANNEMAN, REID & COMPANY BLOCK
413 - 421 N. 8TH ST. (R-L)
Railroad Hist Dist

Richmond, IN
Ron Stiller
April 1984
Ron Stiller
Looking southeast at west facades

Photo 19
of 36

Winston.
America's
Best.



PAULEE RESTAURANT

AUTOMATIC: NO CHARGE!



Plymouth Horizon
CROWN
CHRYSLER-PLYMOUTH

PAULEE

PAULEE RESTAURANT

THE ORIGINAL
TTC
PAULEE RESTAURANT

ALL DAY
DINING



416-420 N. 8TH ST (L-R)

PHOTO 20
of 36

RICHMOND RAILROAD H.D.

RICHMOND, IN

FATHEKINE & JOURDAN

AUG 1986 HISTORIC LANDMARKS

LOOKING SOUTHEAST AT NORTH FACADES



Muther's

815

PHOTO 21
of 36

813-815 N. E ST. (R-L)

RICHMOND RAILROAD H.D.

RICHMOND, IN

KATHERINE JORDAN

AUG 1986 HISTORIC LANDMARKS

LOOKING SOUTH AT NORTH FACADE



74P

OPEN

8
2
1

White rectangular sign

Mother's

74P
MEMORIAL
CHURCH

Handwritten text on window

817-823 N. E ST (R-L)

RICHMOND RAILROAD H.D.

PHOTO

22

of 36

RICHMOND, IN

KATHERINE JORDAN

AUG, 1986 HISTORIC LANDMARKS

LOOKING SOUTH AT NORTH FACADE



PHOTO 23
of 36

JAMES SHAW BLDG
825-829 N. E ST (R-1)
RICHMOND RAILROAD A.D
RICHMOND, IN
KATHERINE JOURDAN
AUG 1986 HISTORIC LANDMARKS
LOOKING SOUTH AT NORTH FACADE



JOHN W. GRUBBS BLDG
831-833 N. E ST
RICHMOND RAILROAD AID

RICHMOND, IN

KATHERINE JOURDAN

AVG, 1984. HISTORIC LANDMARKS

LOOKING SOUTH AT NORTH FACADE

PHOTO 24
OF 36



LETTING
AL WORKS

ADAM H. BARTEL CO.
PHOTO LITHO

911 N. E STREET

Adam H. Bartel, Railroad Hist Dist

Richmond, IN

Ron Stiller

1984

Ron Stiller

Looking south at north facade

PHOTO 25
of 36

AND - SWISHER CO. The ROLAND - SWISHER CO.

FOUNDRIES TAPPING
STEEL RIGGING WORKS



JONES HARDWARE BLDG
923 N. E ST
RICHMOND RAILROAD H.D.
RICHMOND, IN

KATHERINE JOURDAN

AUG 1986 HISTORIC LANDMARKS

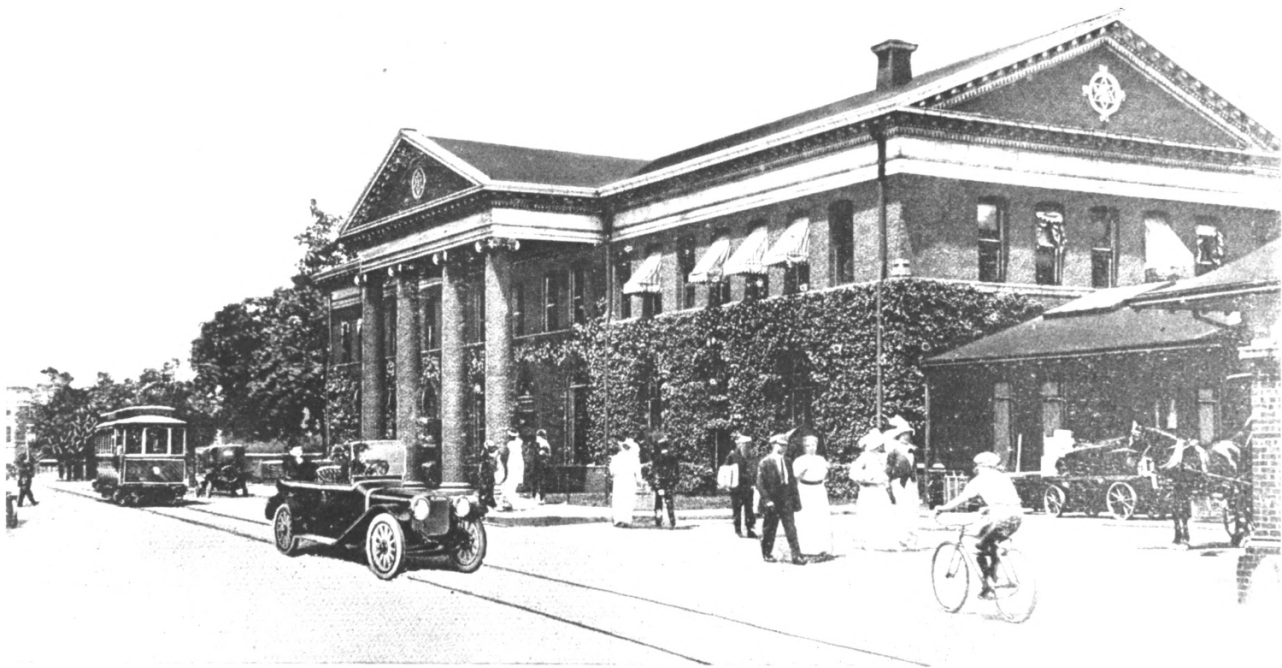
LOOKING SOUTHWEST AT NORTH FACADE

PHOTO

87

26
36

NORTH E STREET AND PENNSYLVANIA STATION, RICHMOND, IND.



PENNSYLVANIA RAILROAD STATION C. 1920
930 N. E STREET

PHOTO 27
of 36

RICHMOND RAILROAD H. D.

RICHMOND, IN

KATHERINE JOURDAN

AUG, 1986 HISTORIC LANDMARKS

LOOKING NORTHWEST AT SOUTH FACADE



1872 Railroad Station
Railroad Hist Dist
Richmond, IN
Historic photo, Wayne Cty Hist Soc
c. before 1902
Lucian Szlizewski (copy)
Looking west at east facade

PHOTO 28
07 36



PENNA. R.R. STATION - RICHMOND, IND. 284-30.
NICHOLSON & BRO. PUB.

Pennsylvania Station, 930 N. E. St.
Railroad Hist Dist
Richmond, IN
Historic photo, Wayne Cty Hist Soc.
c. 1910
Lucian Szlizewski (copy)
Looking east at west facade

PHOTO 29
of 36



PENNSYLVANIA RAILROAD STATION

930 N. E ST.

RICHMOND RAILROAD H.D.

RICHMOND, IN

KATHERINE JOURDAN

AUG 1986 HISTORIC LANDMARKS

LOOKING NORTHWEST AT SOUTH FACADE

PHOTO

30

of 36



PENNSYLVANIA RAILROAD STATION
930 N. E ST
RICHMOND RAILROAD A.D.

RICHMOND, IN

KATHERINE JOURDAN

AUG 1986 HISTORIC LANDMARKS

LOOKING WEST AT NORTH ~~FACADE~~

PHOTO 31
of 36



PHOTO 32 OF 36

PENNSYLVANIA FREIGHT STATION - EXPRESS OFFICE

930 N. E ST

RICHMOND RAILROAD A.D

RICHMOND, IN

KATHERINE JORDAN

AUG 1986 HISTORIC LANDMARKS

LOOKING NORTH AT SOUTH FACADE



PENNSYLVANIA FREIGHT STATION -

Express Office, Railroad Hist Dist

Richmond, IN 930 N. E ST.

Ron Stiller

April 1984

Ron Stiller

Looking southwest at rear or north wall

PHOTO 33
of 36



PHOTO 34

of 36

JONES HARDWARE WAREHOUSE

900 ELM PLACE

RICHMOND RAILROAD H.T.

RICHMOND, IN

KATHERINE JOURDAN

AUG 1986 HISTORIC LANDMARKS

LOOKING WEST AT EAST + NORTH FACADES



RICHMOND/ATLAS UNDERWEAR BLDG

401 N. 10TH ST

RICHMOND RAILROAD H.D.

RICHMOND, IN

KATHERINE SOURDAN

AUG 1986 HISTORIC LANDMARKS

LOOKING EAST AT WEST FACADE

PHOTO 35
OF 36

*Tenth and North E. Sts.
(Fan Handle Station) looking West,
Richmond, Ind.*



Streetscape, Railroad Hist Dist
Richmond, IN
Historic photo, Wayne Cty Hist Soc.
c. 1910
Lucian Szlizewski (copy)
Looking west down North E St from 10th St

PHOTO 36
of 36