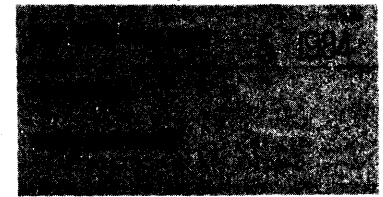


**United States Department of the Interior
National Park Service**

**National Register of Historic Places
Inventory—Nomination Form**



✓ Pulaski County Multiple Resource
Continuation sheet Area, Kentucky

Item number

Page

West Columbia Street District

Description

Location: ~~Along the~~ 200 and 300 blocks of ~~West Columbia Street~~ in Somerset, Kentucky ✓

Owner: Multiple

Classification: District

The West Columbia Street District is located along the 200 and 300 blocks of West Columbia Street in Somerset, Kentucky. This small area contains an important grouping of Victorian architecture. It is located within one block of Main Street and the Public Square in downtown Somerset. The district is bounded on the north by a 20th century residential area and on the west, south and east by modern buildings and parking lots. This section of Victorian homes is one of the best preserved areas adjacent to the downtown area.

All of the buildings are one to two story late 19th century residential homes and represent one of the best remaining groupings of historic architecture in Somerset. Within the district are six houses constructed in the Queen Anne, Colonial Revival and Italianate styles. This area has been primarily residential in character but recently two homes have been converted into offices. Alterations to the exterior of the structures have been minimal and they reflect their original character. All buildings within the district are contributive.

Acreage: approx. 1.2 acres

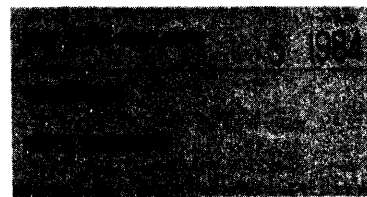
Verbal Boundary Description: The boundary of the West Columbia District is designated as lots 2 and 3 on block 29 and lots 1, 8, 9, and 10 on block 30 as shown on Somerset tax maps. The district is defined by parking lots and modern buildings on the west, south and east, and a 20th century residential area to the north.

UTM References: A. 16/712450/4107595 B. 16/712482/4107525 C. 16/712638/4107600 D. 16/712640/4107540

United States Department of the Interior
National Park ServiceNational Register of Historic Places
Inventory—Nomination FormPulaski County Multiple Resource
Continuation sheet Area, Kentucky

Item number

Page



West Columbia Historic District - Individual Property Descriptions

1. 201 W. Columbia, Tate House : The Tate house is a two-story brick Queen Anne style house built ca. 1890 featuring a prominent two-story corner tower with a conical roof. The windows are one-over-one sash with stone sills and brick jack arches. On the east facade is a one-story bay window. The interior has been remodeled into attorney offices.
2. 203 W. Columbia: Constructed ca. 1890, this two-story Queen Anne house has been converted into law offices. It has a prominent one-story porch with wooden columns and cushion capitals. The windows are one-over-one sash with ashlar stone lintels and rusticated stone sills. A distinctive feature of the house is the expanse of multi-colored slate tiles in the gable fields of the main facade. In one of the fields is a decorative Palladian window. The house also retains the original standing seam metal roof.
3. 205 W. Columbia: This one-story brick home was built ca. 1900. It has a one-story porch with Tuscan columns resting on brick piers. The windows are paired one-over-one sash with brick relief arching. Part of an upper story gable has been altered with a new window and vertical siding. The house has a bay window on the main facade and retains the original standing seam metal roof.
4. 207 W. Columbia, Wilson House: The Wilson house is a ca. 1880 Italianate style structure. It is a two-story brick house with large brackets under the eaves. The two-story front porch has been enclosed with frame and glass. Windows are one-over-one sash with rounded arches and pedimented metal hood molding. Windows on the west facade have corbelled brick hood molding.
5. 301 W. Columbia: Built ca. 1890, this two-story Queen Anne style house is of brick construction. It has a large porch supported by brick piers with Doric motif capitals. The windows are one-over-one sash with jack arches and rusticated stone sills. A small rectangular stained glass window is also present on the main facade. The gable field facing Columbia Street has multi-colored slate tiles. At the roof are the original pressed metal shingles.
6. 303 W. Columbia: This two-story brick Queen Anne style house has been painted white and features a prominent corner tower with a pyramidal roof. It has a one story porch with Tuscan columns resting on brick piers. The windows are one-over-one sash with ashlar stone lintels and rusticated stone sills. Pressed metal shingles highlight the gable fields and tower roof. On the east facade is an added one story carport.

**United States Department of the Interior
National Park Service**

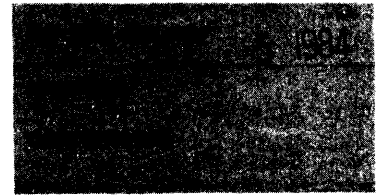
**National Register of Historic Places
Inventory—Nomination Form**

Pulaski County Multiple Resource

Continuation sheet Area, Kentucky

Item number

Page



The West Columbia Historic District

Statement of Significance:

The West Columbia Historic District is a grouping of six residential structures along West Columbia Street in Somerset, Kentucky. All of the homes were constructed between 1880 and 1910 in the Queen Anne, Colonial Revival and Italianate styles. Few changes have occurred to the buildings and they still retain their original architectural character. The district contains the greatest concentration of late 19th century architecture in the community. All buildings within the district are contributive and there are no intrusions.

The land along West Columbia Street was originally part of the William Fox estate whose ca. 1819 home remains at 206 W. Columbia. Fox was one of the early commissioners and businessmen of the city and he amassed great wealth and property before his death. After his death the property was divided among his children who sold off many of the lots. By 1880 this section of West Columbia Street had been subdivided and the erection of homes along the street occurred. The earliest house built along the street was the Italianate style home at 207 W. Columbia constructed ca. 1880. Construction on the other lots followed soon after and by 1905 all of the present homes had been built.

The homes along West Columbia Street were built by the growing middle class of Somerset following the arrival of the railroad in 1877. These homes are excellent examples of the late Victorian styles and several feature corner towers, multi-colored slate surfaces and decorative windows. The majority are still used as residences although two of the homes have been converted into law offices. The homes represent a significant grouping of Victorian architecture which has retained its original character.

- A. Beecher Smith House
- B. Waddle-Frater House
- C. Smith House
- D. City Hall
- E. Morrow House
- F. Crawford House
- G. Withers House
- H. Dill Scott House
- I. Richardson House

Historic Districts

- J. Harvey's Hill
- K. W. Columbia
- L. North Main
- M. South Courthouse Square

WEST COLUMBIA DISTRICT

