



PRINCETON
BAPTIST
CHURCH
CLASSES 9:45
WORSHIP 11:00

1. PRINCETON BAPTIST CHURCH AT PENNS NECK
PENNS NECK, N. J. (Mercer County)
ARTHUR BRECKNELL, photographer
October 1988
Files of photographer
CAMERA POINTING NE



2. PRINCETON BAPTIST CHURCH AT
PENNS NECK

PENNS NECK, N.J. (Mercer County)

ARTHUR BRECKNELL, Photographer
October 1988

Files of photographer

CAMERA POINTING EASTERLY
ACROSS HIGHWAY #1

SHOWS HOW CLOSE HIGHWAY
IS TO CHURCH



3. PRINCETON BAPTIST CHURCH AT PENNS NECK:
PENNS NECK, N. J. (Mercer County)

ARTHUR BRECKNELL, photographer

October 1988

Files of photographer

CAMERA POINTING WESTERLY

SCANNING THE 19TH-CENTURY GRAVES

SHOWING THEIR RELATIONSHIP TO CHURCH



4. PRINCETON BAPTIST CHURCH AT PENNS NECK:
PENNS NECK, N.J. (Mercer County) Cemetery

ARTHUR BRECKNELL, photographer
October 1988

files of photographer

CAMERA POINTING EAST-NORTHERLY
SHOWING OLDEST GRAVE STONES



51 PRINCETON BAPTIST CHURCH AT PENNS NECK:

TAVERN/PARSONAGE HOUSE

PENNS NECK, N. J. (Mercer County)

ARTHUR BRECKNELL, photographer

October 1988

film of photographer

CAMERA POINTING NORTHERLY



6. PRINCETON BAPTIST CHURCH AT
PENNS NECK: TOWER (parsonage)

PENNS NECK, N. J. (Mercer County)

ARTHUR BRECKNELL, photographer
October 1988

film of photographer

CAMERA POINTING SOUTHWARD:

VIEW OF WEST GABLE WALL

SHOWING ORIGINAL FENESTRATION



7. PRINCETON BAPTIST CHURCH AT PENNS NECK:

CHRISTIAN EDUCATION BUILDING

PENNS NECK, N. J. (Mercer County)

ARTHUR BRECKNELL, photographer

October 1988

Files of photographer

CAMERA POINTING WEST-NORTHERLY



8 PRINCETON BAPTIST CHURCH AT PENNS NECK!
CHURCH COMPLEX

PENNS NECK, N. J. (Mercer County)

ARTHUR BRECKBELL, photographer

October 1988

Files of photographer

CAMERA POINTING WEST AND BY NORTH (wide angle lens). There is a certain distortion, which makes the church appear closer to the other two buildings than it is.



9. PRINCETON BAPTIST CHURCH AT PENNS NECK:

OVERVIEW OF PROPERTY FROM HIGHWAY

PENNS NECK, N. J. (Mercer County)

ARTHUR BRECKNELL, photographer

October 1988

Files of photographer

CAMERA POINTING EAST-BY NORTH. TAKEN
FROM THE WEST SIDE OF THE TRAFFIC CIRCLE,
SHOWS BUSY TRAFFIC (WHICH IS CONSTANT).

Rented Realty Office (former gas station) on far
side of circle. Impressive size of parsonage
is best appreciated from this view.



PRINCETON BAPTIST CHURCH AT
TENNESSECK, N. J. (Mercer County)

ARTHUR BRECKNELL, photographer

10/88

photographer's files

CAMERA FACING S by E.

Open door leads to office

addition and choir-singing
room



16. PRINCETON BAPTIST CHURCH AT
PENNS NECK, N. J. (Mercer County)

ARTHUR BRECKNELL, Photographer
10/88

Photographer's files

CAMERA FACING Easterly
toward pastor's preaching
platform



12. PRINCETON BAPTIST CHURCH AT
PENNS NECK, N. J. (Mercer County)
ARTHUR BRECKDELL, photographer

10/58

photographer's files

CAMERA FACING E. Pulpit and
choir area.



13. PRINCETON BAPTIST CHURCH AT
PENNS NECK, N.J (Mercer County)

ARTHUR BRECKNELL, photographer

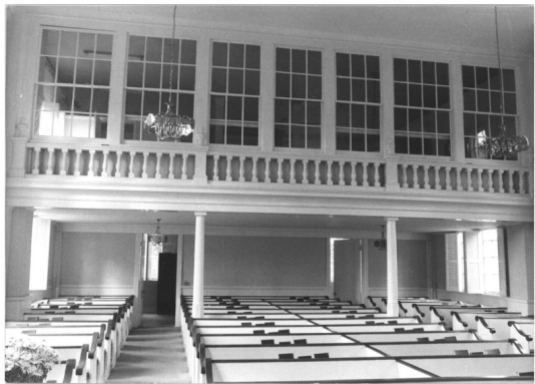
10/88

photographer's files

CAMERA FACING N by W

across pulpit platform

(beneath which is baptistry)



14. PRINCETON BAPTIST CHURCH AT
PENNS NECK, N. J. (Mercer County)

ARTHUR BRECKENSHAW, photographer

10/88

Photographer's files

CAMERA FACING W to
entry vestibule



15. PRINCETON BAPTIST CHURCH AT
PENNS NECK: tower / parsonage
PENNS NECK, N.J. (Mercer County)

UNKNOWN CHURCH MEMBER

(copy made by Arthur Brecknell)
10/88 "

Brecknell files

CAMERA FACING NORTH: exterior
entrance way, main facade.
showing raised-panel original
door.



16.

PRINCETON BAPTIST CHURCH AT
PENNS NECK, N. J.: tavern/passage
(Mercer County)

ARTHUR BRECKNELL, photographer

10/88

photographer's files

CAMERA FACING NE: CORNER
CUPBOARD IN (presumed)

DINING ROOM OF TAVERN, EAST
REAR ROOM

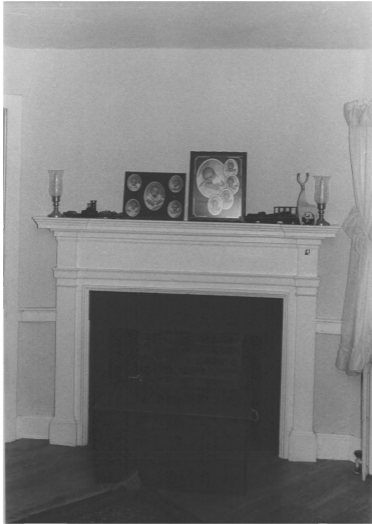


17. PRINCETON BAPTIST CHURCH AT
PENNS NECK, N. J. : Tavern/parsonage
(Mercer County)
ARTHUR BRECKNELL, photographer

10/88

photographer's files

CAMERA FACING SE: REAR ROOM,
EAST SIDE, GROUND STORY. SHOWS
STYLE OF MANTEL PIECE USED IN
TAVERN, IN PLAIN VARIANT;
ALSO CHAIR RAIL TYPE FOUND
THROUGHOUT HOUSE



181 PRINCETON BAPTIST CHURCH AT

PENNS NECK, N. J. : Tavern of parsonage
(Mercer County)

ARTHUR BRECKNELL, photographer

10/88

Photographer's files

CAMERA FACING NE, FRONT

BEDROOM, EAST SIDE. Shows

mantel identical to one in dining
room on floor below (needed mantel-
pieces are on other side of house).



19. PRINCETON BAPTIST CHURCH AT

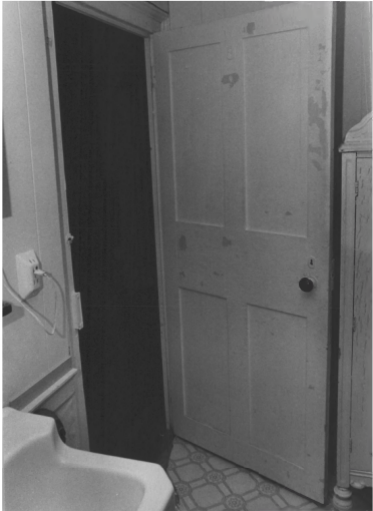
PENNS NECK, N. J. : tower/porch
(Mercer County)

ARTHUR BRECKNELL, photographer

10/88

photographer's files

CAMERA FACING SW: rear room,
2ND STORY, WEST SIDE, showing
MORE REFINED DETAILING OF
MANTELPIECES OF WEST ROOMS



20) PRINCETON BAPTIST CHURCH AT
PENNS NECK, N. J.: Tavern/parsonage
(Mercer County)
ARTHUR BRECKWELL, photographer
10/88
photographer's files
CAMERA FACING NW: ROOM,
2ND STORY; OVER FRONT VESTIBULE,
(tenant's bathroom) REVERSE
SIDE OF RAISED-PANEL DOOR
SHOWS # "3" NEAR TOP, CENTER



21. PRINCETON BAPTIST CHURCH AT
PENNS NECK, N. J.; tavern/parsonage
(Mercer County)
ARTHUR BRECKNELL, photographer
10/88

photographer's files

CAMERA FACING E. REAR ROOM,
2ND STORY, WEST SIDE. ORIGINAL
6-panel Door TO ATTIC STAIRWAY
Suffolk latch; wood pull. Baseboard
details vary slightly room to room.



22. PRINCETON BAPTIST CHURCH AT
PENNS NECK: tower (parsonage)
PENNS NECK, N. J. (Mercer County)

UNKNOWN CHURCH MEMBER

10/88 (copy made by Arthur Bracknell)

Bracknell's files

CAMERA FACING S. Shows old
worn stairs to attic between
plastered walls

Johns-Manville
Fiber Glass
INSULATION

MADE IN U.S.A. BY J.M. MANVILLE



23. PRINCETON BAPTIST CHURCH AT
PENNS NECK: Tavern/parsonage
PENNS NECK, N. J. (Mercer County)
ARTHUR BRECKNELL, photographer
10/58

Photographer's files

CAMERA POINTING SOUTH:

Shoes board partition with
strips (for clothes pegs?) attached
in attic



24) PRINCETON BAPTIST CHURCH AT

PENNS NECK, N. J. : tower/parsonage
(Mercer County)

ARTHUR BRECKNELL, photographer

10/88

photographer's files

CAMERA FACING N by E. Ladder
to roof hatch.