

United States Department of the Interior
National Park Service

National Register of Historic Places Registration Form

This form is for use in nominating or requesting determinations for individual properties and districts. See instructions in *How to Complete the National Register of Historic Places Registration Form* (National Register Bulletin 16A). Complete each item by marking "x" in the appropriate box or by entering the information requested. If an item does not apply to the property being documented, enter "N/A" for "not applicable." For functions, architectural classification, materials, and areas of significance, enter only categories and subcategories from the instructions. Place additional entries and narrative items on continuation sheets (NPS Form 10-900a). Use a typewriter, word processor, or computer, to complete all items.

1. Name of Property

historic name Arkansas Highway 57 Bridge

other names/site number Bridge #M1038, Site #OU0181

2. Location

street & number Arkansas Highway 57 (Ruby Street)/ Over the Union Pacific Railroad ☐ not for publication

city or town Stephens ☐ vicinity

state Arkansas code AR county Ouachita code 103 zip code 71764

3. State/Federal Agency Certification

As the designated authority under the National Historic Preservation Act, as amended, I hereby certify that this ☒ nomination ☐
request for determination of eligibility meets the documentation standards for registering properties in the National Register of Historic
Places and meets the procedural and professional requirements set for in 36 CFR Part 60. In my opinion, the property ☒ meets ☐
does not meet the National Register criteria. I recommend that this property be considered significant
☐ nationally ☒ statewide ☐ locally. (See continuation sheet for additional comments.)

Cathie Matthews
Signature of certifying official/Title

8/12/05
Date

Arkansas Historic Preservation Program
State or Federal agency and bureau

In my opinion, the property ☐ meets ☐ does not meet the National Register criteria. (☐ See Continuation sheet for additional comments.)

Signature of certifying official/Title

Date

State or Federal agency and bureau

4. National Park Service Certification

I hereby certify that the property is:

☒ entered in the National Register.
☐ See continuation sheet

☐ determined eligible for the
National Register.
☐ See continuation sheet

☐ determined not eligible for the
National Register.

☐ removed from the National
Register.

☐ other, (explain): _____

Edson H. Beall
Signature of the Keeper

9.28.05
Date of Action

Arkansas Highway 57 Bridge

Name of Property

Ouachita County, Arkansas

County and State

5. Classification**Ownership of Property**

(Check as many boxes as apply)

- ☐ private
☐ public-local
☒ public-State
☐ public-Federal

Category of Property

(Check only one box)

- ☐ building(s)
☐ district
☐ site
☒ structure
☐ object

Number of Resources within Property

(Do not include previously listed resources in count.)

Contributing

Noncontributing

	buildings
	sites
1	structures
	objects
1	Total

Name of related multiple property listing

(Enter "N/A" if property is not part of a multiple property listing.)

Historic Bridges of Arkansas

Number of Contributing resources previously listed in the National Register

0

6. Function or Use**Historic Functions**

(Enter categories from instructions)

TRANSPORTATION/road related (vehicular)

TRANSPORTATION/pedestrian-related

Current Functions

(Enter categories from instructions)

TRANSPORTATION/road related (vehicular)

TRANSPORTATION/pedestrian-related

7. Description**Architectural Classification**

(Enter categories from instructions)

OTHER/Parker pony truss

Materials

(Enter categories from instructions)

foundation CONCRETE

walls N/A

roof N/A

other STEEL

Narrative Description

(Describe the historic and current condition of the property on one or more continuation sheets.)

United States Department of the Interior
National Park Service

National Register of Historic Places Continuation Sheet

Section number 7 Page 1

SUMMARY

The Arkansas Highway 57 Bridge is located on Highway 57 in Stephens, Arkansas. The bridge crosses the railroad tracks near the intersection of Highway 57 and Highway 79 in the center of town. The bridge is comprised of a Warren pony truss with a total length of 98 feet.

ELABORATION

The bridge is accessed from both the east and west. The Warren truss was patented by James Warren and Willoughby Monzoni in 1848. The defining feature of the Warren truss is the presence of equilateral or isosceles triangles created by the members connecting the top and bottom chord. The Warren truss used on the Arkansas Highway 57 Bridge has a polygonal top chord rather than a straight chord. This variation of the Warren truss is rare and is the only known example of one on a state highway in Arkansas.

The Arkansas Highway 57 Bridge at Stephens has a single Warren pony-truss span measuring 96.1 feet, with a total structure length of 98.1 ft. The overall width of the bridge is 33 feet. This width includes a five foot pedestrian walkway outside the truss itself on each side of the bridge. The walkway has a steel lattice railing to protect pedestrians. This walkway is the only known example in Arkansas and the steel lattice is the best preserved example of its type in the state.¹ The deck surface is wood plank over the steel truss. The abutments are concrete.

Integrity

There have been no structural alterations to compromise the integrity of this bridge. The town of Stephens has changed very little over the last eighty years, thus the setting has remained much the same. The original design and materials remain intact (with the exception of replacement wood decking). The bridge still serves vehicular and pedestrian traffic.

¹ Scoggin, Robert. Personal interview conducted by the author. Little Rock, Arkansas. 03 August 2005.

8. Statement of Significance**Applicable National Register Criteria**

(Mark "x" in one or more boxes for the criteria qualifying the property for National Register listing.)

- ☒ **A** Property is associated with events that have made a significant contribution to the broad patterns of our history.
- ☐ **B** Property is associated with the lives of persons significant in our past.
- ☒ **C** Property embodies the distinctive characteristics of a type, period, or method of construction or represents the work of a master, or possesses high artistic values, or represents a significant and distinguishable entity whose components lack individual distinction.
- ☐ **D** Property has yielded, or is likely to yield, information important in prehistory or history.

Criteria Considerations

(Mark "x" in all the boxes that apply.)

Property is:

- ☐ **A** owned by a religious institution or used for religious purposes.
- ☐ **B** removed from its original location.
- ☐ **C** birthplace or grave of a historical figure of outstanding importance.
- ☐ **D** a cemetery.
- ☐ **E** a reconstructed building, object, or structure.
- ☐ **F** a commemorative property
- ☐ **G** less than 50 years of age or achieved significance within the past 50 years.

Levels of Significance (local, state, national)

State

Areas of Significance (Enter categories from instructions)

Transportation

Engineering

Period of Significance

1928-1955

Significant Dates

1928-1955

Significant Person (Complete if Criterion B is marked)**Cultural Affiliation** (Complete if Criterion D is marked)**Architect/Builder****Narrative Statement of Significance**

(Explain the significance of the property on one or more continuation sheets.)

9. Major Bibliographical References**Bibliography**

(Cite the books, articles, and other sources used in preparing this form on one or more continuation sheets.)

Previous documentation on file (NPS):

- ☐ preliminary determination of individual listing (36 CFR 67) has been requested
- ☐ previously listed in the National Register
- ☐ Previously determined eligible by the National Register
- ☐ designated a National Historic Landmark
- ☐ recorded by Historic American Buildings Survey

#

- ☐ recorded by Historic American Engineering Record #

Primary location of additional data:

- ☒ State Historic Preservation Office
- ☒ Other State Agency
- ☐ Federal Agency
- ☐ Local Government
- ☐ University
- ☐ Other

Name of repository: Arkansas State Highway and Transportation Department

United States Department of the Interior
National Park Service

National Register of Historic Places Continuation Sheet

Section number 8 Page 1

SUMMARY

The Arkansas Highway 57 Bridge was constructed in 1928. It is being nominated to the National Register of Historic Places with **statewide significance** under **Criterion C**. This bridge is the only known example of a Warren pony truss with a polygonal top chord used on a state highway in Arkansas. The bridge is also being nominated under **Criterion A** for its associations with the development of vehicular transportation in Ouachita County. This nomination is being submitted under the multiple-property listing "**Historic Bridges of Arkansas**" and under associated historic context "**Arkansas Highway and Transportation Department Era: 1923-1939.**"

ELABORATION

Ouachita County was originally inhabited by various Native American groups, the first white settlers were the French, who arrived in the area toward the end of the seventeenth century. Baron La Bastrop received the first land grant in 1799 which spurred permanent settlement. Hunters, traders, and trappers made their way along the Ouachita River. The first official settlement in present day Ouachita County was on Fabre's Bluff. This site developed as a trade stop along the river and grew as traffic increased.

The community at Fabre's Bluff was called Ecore a Fabre. In 1829, Union County was formed and Ecore a Fabre was chosen as the county seat. The county had a population of 640. In the following decade smaller counties began forming, and in 1842 the present day Ouachita County was formed and selected Ecore a Fabre as its county seat. At this point officials renamed Ecore a Fabre Camden.²

Railroads arrived in Ouachita County after the Civil War. The St. Louis Arkansas and Texas Railway had forty-six miles of track in the county by 1882. Stephens, Arkansas was established as a direct result of the railroad influx.³ The St. Louis Southwestern

² *The Goodspeed Biographical and Historical Memoirs of Southern Arkansas*. Southern Historical Press; Easley, South Carolina. 1978. p. 641-643.

³ *Ibid.*, 646

United States Department of the Interior
National Park Service

National Register of Historic Places Continuation Sheet

Section number 8 Page 2

Railway took control of the St. Louis Arkansas and Texas Railway which ran through Stephens. The St. Louis Southwestern line was more popularly known as the Cotton Belt Route. The railroad owned 160 acres at the site of Stephens and they laid out the town. The railway company then lured business owners from the nearby community of Richland to move to Stephens and establish the new town.⁴

Stephens was incorporated in 1889. By this time the town had a handful of healthy businesses, a school, a hotel under construction, and a bank in progress to serve a population rising over five hundred.⁵

When the Cotton Belt Railway initially laid the plans for Stephens, they planned three streets. First, North, and Ruby were the original travel routes in Stephens. The Cotton Belt tracks run parallel to First Street. Ruby Street runs over the tracks and intersects First Street. A bridge had to be constructed over the tracks to accommodate vehicular and pedestrian traffic. There is record of a bridge in this location as early as 1890.⁶ The present bridge was constructed in 1928.

It is unknown who manufactured the steel truss comprising this bridge. It was constructed as part of a road improvement project of State Highway 57. This project, called the Stephens to Mt. Holly Road Project, was initiated in 1927. It dealt with grading and drainage improvements as well.⁷

The Warren pony truss was developed in 1848 by James Warren and Willoughby Monzoni of Great Britain. These trusses are characterized by the triangles formed by the members connecting their top and bottom chords.⁸ The Arkansas Highway 57 Bridge in

⁴ "Cotton Belt Route: The History." Accessed online from www.geocities.com/TheTropics/8199/c_belt.html.

⁵ *The Goodspeed Biographical and Historical Memoirs of Southern Arkansas*, 649.

⁶ *Ibid.*, 648.

⁷ Scoggin, Robert. Telephone interview conducted by the author. Little Rock, Arkansas. 28 March 2005.

⁸ Criddlebaugh, Bruce S. "Bridge Basics: A Spotter's Guide to Bridge Design." 02 November 2001. accessed online from <http://pghbridges.com/basics.htm>.

United States Department of the Interior
National Park Service

National Register of Historic Places Continuation Sheet

Section number 8 Page 3

Stephens has an unusual feature for bridges of this type in Arkansas.⁹ This bridge has a pedestrian walkway extending an extra five feet beyond the vehicular deck of the bridge. The walkway is outside of the Warren pony truss and has a steel lattice rail to protect pedestrians. There are no other Warren pony truss bridges on record in the state with this type of walkway.¹⁰

Statement of Significance

The Arkansas Highway 57 Bridge was constructed in 1928. It is being nominated to the National Register of Historic Places with **statewide significance** under **Criterion C**. This bridge is the only known example of a Warren pony truss with a polygonal top chord used on a state highway in Arkansas. The bridge is also being nominated under **Criterion A** for its associations with the development of vehicular transportation in Ouachita County. This nomination is being submitted under the multiple-property listing "**Historic Bridges of Arkansas**" and under associated historic context "**Arkansas Highway and Transportation Department Era: 1923-1939.**"

⁹ *Ibid.*

¹⁰ *Ibid.*

United States Department of the Interior
National Park Service

National Register of Historic Places Continuation Sheet

Section number 9 Page 1

BIBLIOGRAPHY

"Cotton Belt Route: The History." Accessed online from
www.geocities.com/TheTropics/8199/c_belt.html.

Cridlebaugh, Bruce S. "Bridge Basics: A Spotter's Guide to Bridge Design." 02
November 2001. accessed online from <http://pghbridges.com/basics.htm>.

Scoggin, Robert. Personal interview conducted by the author. Little Rock, Arkansas.
03 August 2005.

Scoggin, Robert. Telephone interview conducted by the author. Little Rock, Arkansas.
28 March 2005.

The Goodspeed Biographical and Historical Memoirs of Southern Arkansas. Southern
Historical Press; Easley, South Carolina. 1978. (Reprinted from an original edition in the
private library of Mrs. Mary Woodward Lewis, Magnolia, Arkansas).

Arkansas Highway 57 Bridge
Name of Property

Ouachita County, Arkansas
County and State

10. Geographical Data

Acreage of Property Less than one.

UTM References

(Place additional UTM references on a continuation sheet.)

1 15 493538 3696851
Zone Easting Northing
2

3 Zone Easting Northing
4
☐ See continuation sheet

Verbal Boundary Description

(Describe the boundaries of the property on a continuation sheet.)

Boundary Justification

(Explain why the boundaries were selected on a continuation sheet.)

11. Form Prepared By

name/title Elizabeth A. James, National Register Historian
organization Arkansas Historic Preservation Program date March 25, 2005
street & number 1500 Tower Building, 323 Center Street telephone (501) 324-9789
city or town Little Rock state AR zip code 72201

Additional Documentation

Submit the following items with the completed form:

Continuation Sheets

Maps

A USGS map (7.5 or 15 minute series) indicating the property's location

A Sketch map for historic districts and properties having large acreage or numerous resources.

Photographs

Representative black and white photographs of the property.

Additional items

(Check with the SHPO or FPO for any additional items.)

Property Owner

(Complete this item at the request of SHPO or FPO.)

name
street & number telephone
city or town state zip code

Paperwork Reduction Act Statement: This information is being collected for applications to the National Register of Historic Places to nominate properties for listing or determine eligibility for listing, to list properties, and to amend existing listing. Response to this request is required to obtain a benefit in accordance with the National Historic Preservation Act, as amended (16 U.S.C. 470 *et seq.*)

Estimated Burden Statement: Public reporting burden for this form is estimated to average 18.1 hours per response including time for reviewing instructions, gathering and maintaining data, and completing and reviewing the form. Direct comments regarding this burden estimate or any aspect of this form to the Chief, Administrative Services Division, National Park Service, P. O. Box 37127, Washington, DC 20013-7127; and the Office of Management and Budget, Paperwork Reductions Projects (1024-0018), Washington, DC 20303.

Arkansas Highway 57 Bridge
Name of Property

Ouachita County, Arkansas
County and State

United States Department of the Interior
National Park Service

National Register of Historic Places Continuation Sheet

Section number 10 Page 1

VERBAL BOUNDARY DESCRIPTION

From the west corner of the bridge, proceed westerly 40 feet to the point of beginning.
From the point of beginning, proceed northeasterly 100 feet, thence proceed southeasterly 145 feet, thence proceed southwesterly 100 feet, thence proceed northwesterly 145 feet to the point of beginning.

BOUNDARY JUSTIFICATION

This boundary includes the St. Louis and Southwestern Railway Bridge and its immediate setting.

UNITED STATES DEPARTMENT OF THE INTERIOR
NATIONAL PARK SERVICE

NATIONAL REGISTER OF HISTORIC PLACES
EVALUATION/RETURN SHEET

REQUESTED ACTION: NOMINATION

PROPERTY Arkansas Highway 57 Bridge
NAME:

MULTIPLE Historic Bridges of Arkansas MPS
NAME:

STATE & COUNTY: ARKANSAS, Ouachita

DATE RECEIVED: 8/17/05 DATE OF PENDING LIST: 9/13/05
DATE OF 16TH DAY: 9/28/05 DATE OF 45TH DAY: 9/30/05
DATE OF WEEKLY LIST:

REFERENCE NUMBER: 05001078

REASONS FOR REVIEW:

APPEAL: N DATA PROBLEM: N LANDSCAPE: N LESS THAN 50 YEARS: N
OTHER: N PDIL: N PERIOD: N PROGRAM UNAPPROVED: N
REQUEST: N SAMPLE: N SLR DRAFT: N NATIONAL: N

COMMENT WAIVER: N

☒ ACCEPT ☐ RETURN ☐ REJECT 9.28.05 DATE

ABSTRACT/SUMMARY COMMENTS:

Entered in the
National Register

RECOM./CRITERIA _____

REVIEWER _____ DISCIPLINE _____

TELEPHONE _____ DATE _____

DOCUMENTATION see attached comments Y/N see attached SLR Y/N

If a nomination is returned to the nominating authority, the nomination is no longer under consideration by the NPS.



ARKANSAS HIGHWAY 57 BRIDGE

OUACHITA COUNTY, AR

SARAH JAMPOLE

JANUARY 2005

ARKANSAS HISTORIC PRESERVATION PROGRAM, LITTLE ROCK, AR

NORTHWEST END, LOOKING SOUTHEAST

#1



ARKANSAS HIGHWAY 57 BRIDGE

OUACHITA COUNTY, AR

SARAH JAMPOLE

JANUARY 2005

ARKANSAS HISTORIC PRESERVATION PROGRAM, LITTLE ROCK, AR

NORTHWEST END, LOOKING SOUTHEAST

#2



ARKANSAS HIGHWAY 57 BRIDGE

OUACHITA COUNTY

SARAH JAMPOLE

JANUARY 2005

ARKANSAS HISTORIC PRESERVATION PROGRAM, LITTLE ROCK, AR

NORTHEAST SIDE, LOOKING NORTH

#3



ARKANSAS HIGHWAY 57 BRIDGE

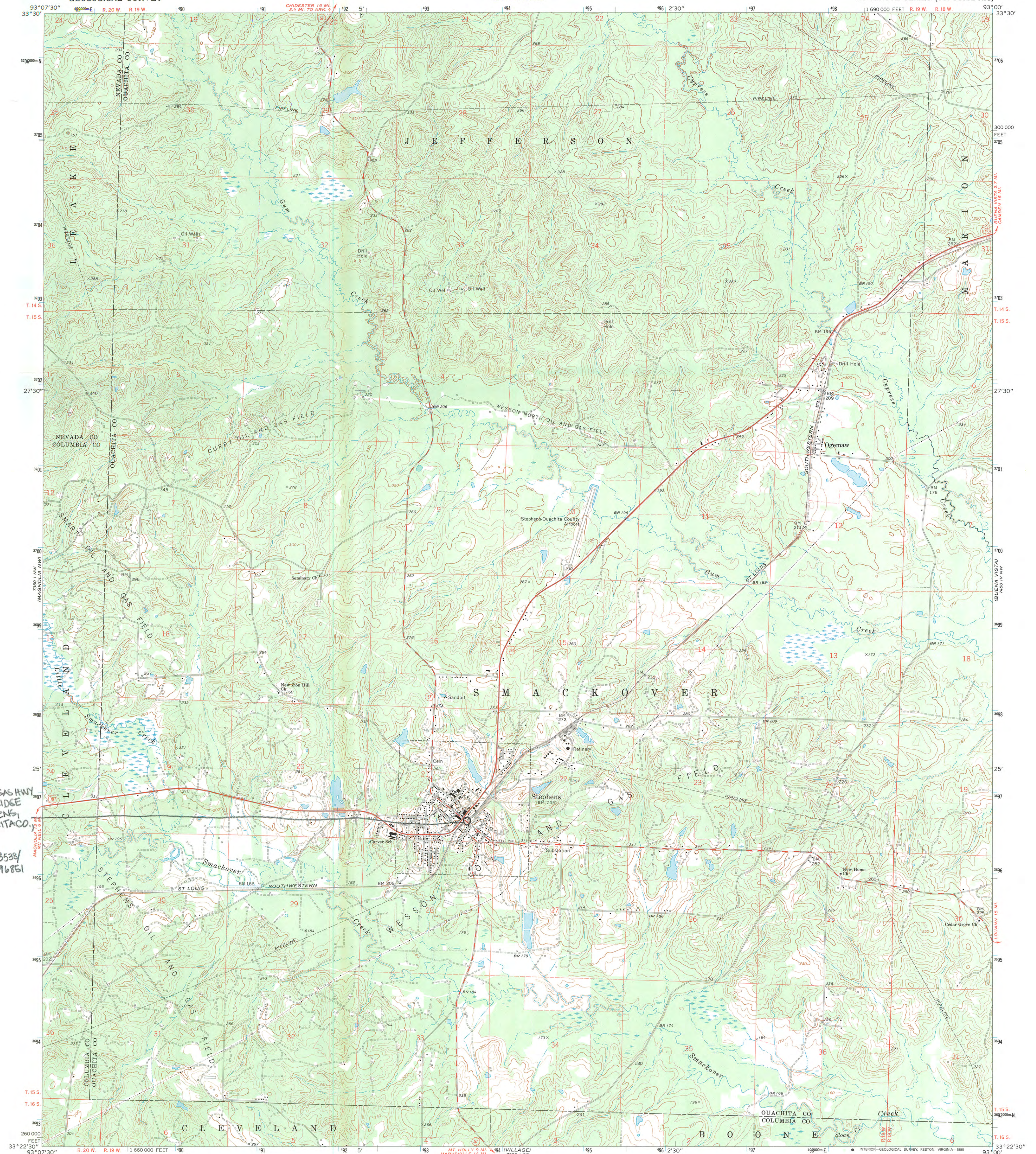
OUACHITA COUNTY

SAKAH JAMPOLE

JANUARY 2005

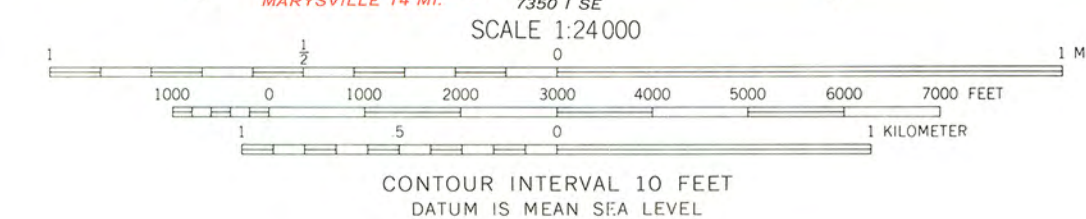
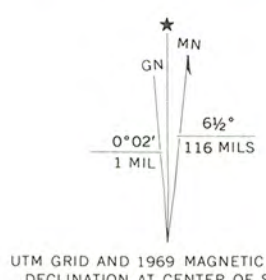
ARKANSAS HISTORIC PRESERVATION PROGRAM, LITTLE ROCK, AR
SOUTHWEST SIDE, LOOKING NORTHWEST

4



ARKANSAS HWY
ST BRIDGE
STEPHENS,
OUACHITA CO.,
AR
UTM:
15/493538/
3696851

Mapped, edited, and published by the Geological Survey
Control by USGS and USC&GS
Topography by photogrammetric methods from aerial
photographs taken 1968. Field checked 1969
Polyconic projection. 1927 North American datum
10,000-foot grid based on Arkansas coordinate system, south zone
1000-meter Universal Transverse Mercator grid ticks,
zone 15, shown in blue
Fine red dashed lines indicate selected fence and field lines where
generally visible on aerial photographs. This information is unchecked
Map photinspected 1976
No major culture or drainage changes observed



ROAD CLASSIFICATION
Primary highway, all weather, hard surface
Secondary highway, all weather, hard surface
Light-duty road, all weather, improved surface
Unimproved road, fair or dry weather
U. S. Route
State Route

THIS MAP COMPLIES WITH NATIONAL MAP ACCURACY STANDARDS
FOR SALE BY U. S. GEOLOGICAL SURVEY, DENVER, COLORADO 80225, OR RESTON, VIRGINIA 22092
AND ARKANSAS GEOLOGICAL COMMISSION, LITTLE ROCK, ARKANSAS 72204
A FOLDER DESCRIBING TOPOGRAPHIC MAPS AND SYMBOLS IS AVAILABLE ON REQUEST

STEPHENS, ARK.
N3322.5-W9300/7.5
1969
PHOTOINSPECTED 1976
AMS 7350 I NE-SERIES V894



The Department of
**Arkansas
Heritage**

Mike Huckabee, Governor
Cathie Matthews, Director

Arkansas Arts Council

Arkansas Natural Heritage
Commission

Delta Cultural Center

Historic Arkansas Museum

Mosaic Templars
Cultural Center

Old State House Museum



**Arkansas Historic
Preservation Program**

1500 Tower Building
323 Center Street

Little Rock, AR 72201

(501) 324-9880

fax: (501) 324-9184

tdd: (501) 324-9811

e-mail:

info@arkansaspreservation.org

website:

www.arkansaspreservation.org

August 3, 2005

Dr. Janet Matthews
Chief of Registration
United States Department of the Interior
National Register of Historic Places
National Park Service
8th Floor
1201 Eye Street, NW
Washington, DC 20005

RE: Arkansas Highway 57 Bridge – Stephens, Ouachita County

Dear Dr. Matthews:

We are enclosing for your review the above-referenced nomination. The Arkansas Historic Preservation Program has complied with all applicable nominating procedures and notification requirements in the nomination process.

If you need further information, please call Ralph S. Wilcox of my staff at (501) 324-9787. Thank you for your cooperation in this matter.

Sincerely,

Cathie Matthews
State Historic Preservation Officer

CM:rsw

Enclosure

An Equal Opportunity Employer

