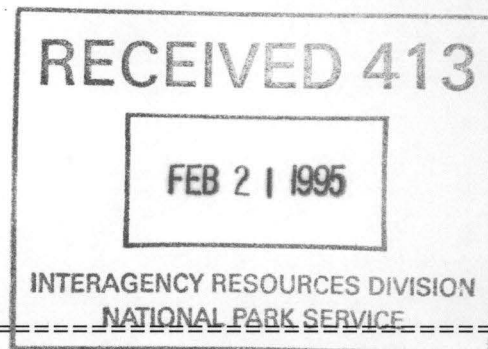


271

United States Department of the Interior  
National Park Service



NATIONAL REGISTER OF HISTORIC PLACES  
REGISTRATION FORM

=====

1. Name of Property

=====

historic name: Davis House

other name/site number: BA0046

=====

2. Location

=====

street & number: SE Corner of Wolf St. & AR Hwy 5

not for publication: N/A

city/town: Norfolk

vicinity: N/A

state: AR county: Baxter code: AR 005 zip code: 72658

=====

3. Classification

=====

Ownership of Property: Private

Category of Property: Building

Number of Resources within Property:

Contributing	Noncontributing
<u>1</u>	<u>      </u> buildings
<u>      </u>	<u>      </u> sites
<u>      </u>	<u>      </u> structures
<u>      </u>	<u>      </u> objects
<u>1</u>	<u>0</u> Total

Number of contributing resources previously listed in the National Register: N/A

Name of related multiple property listing: N/A

\_\_\_\_\_

=====

#### 4. State/Federal Agency Certification

=====

As the designated authority under the National Historic Preservation Act of 1986, as amended, I hereby certify that this X nomination \_\_\_\_\_ request for determination of eligibility meets the documentation standards for registering properties in the National Register of Historic Places and meets the procedural and professional requirements set forth in 36 CFR Part 60. In my opinion, the property X meets \_\_\_\_\_ does not meet the National Register Criteria. \_\_\_\_\_ See continuation sheet.

Cathryn A. Slater  
Signature of certifying official

2-6-95  
Date

Arkansas Historic Preservation Program  
State or Federal agency and bureau

In my opinion, the property \_\_\_\_\_ meets \_\_\_\_\_ does not meet the National Register criteria. \_\_\_\_\_ See continuation sheet.

\_\_\_\_\_  
Signature of commenting or other official

\_\_\_\_\_  
Date

\_\_\_\_\_  
State or Federal agency and bureau

=====

#### 5. National Park Service Certification

=====

I, hereby certify that this property is:

- ☒ entered in the National Register  
\_\_\_\_\_ See continuation sheet.  
☐ determined eligible for the  
National Register  
\_\_\_\_\_ See continuation sheet.  
☐ determined not eligible for the  
National Register  
☐ removed from the National Register  
\_\_\_\_\_ other (explain): \_\_\_\_\_

Edson H. Beall 3/23/95

Entered in the  
National Register

for Signature of Keeper

\_\_\_\_\_  
Date  
of Action

=====

#### 6. Function or Use

=====

Historic: Domestic Sub: Single Dwelling

Current : Work in Progress Sub: \_\_\_\_\_

=====

## 7. Description

=====

Architectural Classification:

Plain Traditional

\_\_\_\_\_

\_\_\_\_\_

Other Description: pyramidal-roof cottage

Materials: foundation Stucco roof Asphalt  
walls Weatherboard other Stone

\_\_\_\_\_

Describe present and historic physical appearance. X See continuation sheet.

=====

## 8. Statement of Significance

=====

Certifying official has considered the significance of this property in relation to other properties: local.

Applicable National Register Criteria: C

Criteria Considerations (Exceptions): N/A

Areas of Significance: Architecture

\_\_\_\_\_

\_\_\_\_\_

\_\_\_\_\_

\_\_\_\_\_

\_\_\_\_\_

Period(s) of Significance: 1928

Significant Dates: N/A

Significant Person(s): N/A

\_\_\_\_\_

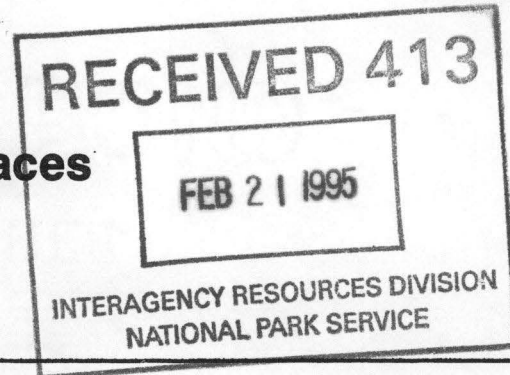
Cultural Affiliation: N/A

Architect/Builder: Torrence, Joe - Builder  
Wattins, Lige - Stonemason

\_\_\_\_\_

State significance of property, and justify criteria, criteria considerations, and areas and periods of significance noted above.  
X See continuation sheet.



United States Department of the Interior  
National Park ServiceNational Register of Historic Places  
Continuation SheetSection number 7 Page 1**Summary**

Constructed in 1928, the Davis House is a Plain Traditional-styled, pyramidal-roof cottage with double front doors. The exterior is virtually unaltered and features two shed-roof dormers and a large fieldstone chimney. The interior is simply executed with hardwood floors and plain moldings, but does feature an elegant Colonial Revival-inspired mantelpiece. There are no outbuildings associated with this property. Located at the corner of Wolf Street and Arkansas Highway 5, the one-and-a-half story house overlooks the scenic White River.

**Elaboration**

Located on the corner of Wolf Street and Arkansas Highway 5 in Norfork, Baxter County, the Davis House is situated on a hillside and commands an excellent view of the scenic White River and the c. 1825 Jacob Wolf House across the road and to the northwest. Constructed in 1928, the Davis House is a one-and-a-half story, pyramidal-roof cottage with a double front doors. The Plain Traditional-styled structure is clad with white-painted, simple-drop wood siding and rests upon a stucco-covered, continuous foundation. The composition-shingled roof was built with functional exposed-rafter eaves and is accented by shed-roof dormers on the front and southern elevations. Both dormers contain two casement windows (front elevation contains four-pane sash; southern elevation has single-pane) and three exposed rafters. A large, fieldstone chimney is present on the exterior of the southern elevation of the house.

The front, or western, elevation is defined by a full-facade, hipped-roof porch that is supported by four chamfered wood posts. The porch is floored with wood and accessed by a four-step concrete stoop with side walls. Underneath, the two front doors and flanking one-over-one, double-hung, wood-frame windows are symmetrically arranged. Both entrances retain historic wood-frame screen doors that can be converted to winter storm doors with an eight-pane glazed insert, one of which is currently in use on the southern door. The main doors are wood-panelled with upper half glazed with a single large pane.

Fenestration on the northern elevation is accomplished by a one-over-one, double-hung window to the west, a much smaller one-over window to the east of center, and a pair of small six-over-six window near the northeast corner of the house.

The rear, or eastern, elevation also contains a full-facade hipped-roof porch; however, it is supported by four plain square wood posts instead of the fancier chamfered design of the front porch. a pair of one-over-one, double-hung windows at each end of the porch and a single-leaf, twelve-pane glazed door to the north of center.



**United States Department of the Interior  
National Park Service**

**National Register of Historic Places  
Continuation Sheet**

Section number 7 Page 2

---

Two one-over-one, double-hung windows comprise the southern elevation. Both are placed east of the chimney, which stands near the western end of the wall.

The interior is utilitarian in design with hardwood floors, plain moldings, and wood panelled doors. Details of note include a handsome wood mantel of Colonial Revival inspiration and a simple stick balustrade along the second-floor landing of the staircase. Although the interior was partially remodeled about twenty years ago, it retains integrity.

There are no extant outbuildings associated with this property.

**United States Department of the Interior  
National Park Service**

**National Register of Historic Places  
Continuation Sheet**

Section number 8 Page 1

---

**Summary**

The Davis House is being nominated under Criterion C with local significance as the best example of a Plain Traditional-styled, pyramidal-roof cottage in Norfork.

**Elaboration**

Situated at the junction of the White and the Northfork Rivers, the town of Norfork was settled around 1818 by the Wolf and Adams families from Kentucky according to A.C. Jeffery in his 1877 history of the area. Of German descent, Major Jacob Wolf was born in South Carolina in 1786 and had moved to Kentucky in his youth. In 1809, President Thomas Jefferson appointed Wolf as Indian Agent to the Cherokee Nation and to help administer the affairs of other tribes living in the northern section of the District of Arkansas in the Louisiana Territory. Wolf constructed his famous house c. 1825, and a small village and trading center called "Liberty" grew up around the house. With the advent of steamboats on the White River, Liberty became an important riverport for north central Arkansas and south Central Missouri.

Around 1901, the White River branch of the Iron Mountain Railroad was constructed through Liberty, and the community was renamed "Devero" in honor of the French railroad engineer Devereaux. Devero became a center for the timber industry in Baxter County due to its advantageous location on both water and rail. Logs were floated down the White River and its tributaries, the Buffalo and Northfork rivers, to the town where they were loaded onto railroad cars to be transported. As a result of this activity, two mercantile stores, a butcher shop, barber shop, bank, and post office were opened. In 1910, F. L. Chastain and Charley Blevins, who owned the town site, platted and incorporated the town under yet another name - Norfork.

The nominated property was constructed in 1928, a year after the Geographic Photography Company of Hollywood came to Norfork to film a Civil War drama, "Souls Aflame." Apparently the house was built for Charley Blevins by a local builder, Joe Torrence, and Lige Wattins, a local stonemason. Little is known of its history until 1933 when H.W. Davis purchased the house from J.E. Cantwell. Davis moved to Norfork because of his work as a road surveyor, and, unfortunately, was severely injured on a job. Sometime later, he married his nurse, Norma Pryor, and in 1937, their son Dale was born. Dale Davis recalled in an interview that his grandfather, Mac Pryor, who was elected to the Arkansas House of Representatives in 1933, lived in the house with him and his mother. Members of the Davis family resided in the house until 1976. Currently, the Davis House is owned by Thomas Embach and is being repaired for use as quarters for a manager who will oversee a new retirement home complex to be

**United States Department of the Interior  
National Park Service**

**National Register of Historic Places  
Continuation Sheet**

Section number 8 Page 2

---

constructed on land behind the house.

The Davis House is an excellent example of a Plain Traditional-style, pyramidal-roof cottage with double front doors. Such structures were commonly constructed in towns and rural areas of Arkansas during the early twentieth century and were popular, despite a relative lack of flexibility of design, because of the low cost and simplicity of construction. Indeed, the nearby Baxter County town of Cotter was once nicknamed "Egypt" due to all of the pyramid-roof residences. Today, a great number of this once common housing stock have been either altered greatly or destroyed. The architectural significance of the Davis House lies in its virtually unaltered exterior which reflects an embellishment of the basic square pyramidal-roof plan with two shed-roof dormers, a robust fieldstone chimney, and the subtle decoration of the chamfered porch supports. For these reasons, it is being nominated under Criterion C with local significance.



=====

## 9. Major Bibliographical References

=====

\_\_ See continuation sheet.

Previous documentation on file (NPS):

- \_ preliminary determination of individual listing (36 CFR 67) has been requested.
- \_ previously listed in the National Register
- \_ previously determined eligible by the National Register
- \_ designated a National Historic Landmark
- \_ recorded by Historic American Buildings Survey # \_\_\_\_\_
- \_ recorded by Historic American Engineering Record # \_\_\_\_\_

Primary Location of Additional Data:

- X State historic preservation office
- \_ Other state agency
- \_ Federal agency
- \_ Local government
- \_ University
- \_ Other -- Specify Repository: \_\_\_\_\_

=====

## 10. Geographical Data

=====

Acreage of Property: Less than one

UTM References: Zone Easting Northing      Zone Easting Northing

A	<u>15</u>	<u>564180</u>	<u>4007260</u>	B	<u>  </u>	<u>  </u>	<u>  </u>
C	<u>  </u>	<u>  </u>	<u>  </u>	D	<u>  </u>	<u>  </u>	<u>  </u>

\_\_ See continuation sheet.

Verbal Boundary Description: \_\_ See continuation sheet.

Lots No. 105, 106, and 107 in the Town of Norfolk, Arkansas.

Boundary Justification: \_\_ See continuation sheet.

This boundary includes all of the property historically associated with this resource that retains its integrity.

=====

## 11. Form Prepared By

=====

Name/Title: Patrick Zollner, Architectural Historian

Organization: Arkansas Historic Preservation Program Date: February 2, 1995

Street & Number: 323 Center, 1600 Tower Bldg. Telephone: (501) 324-9880

City or Town: Little Rock State: AR ZIP: 72201

**United States Department of the Interior  
National Park Service**

**National Register of Historic Places  
Continuation Sheet**

Section number 9 Page 1

---

**Bibliography**

Information submitted by Thomas Embach, May 1994.

Jeffery, A. C. "Historical and Biographical Sketches of the Early Settlement of the Valley of White River, Together with a History of Izard County." *Melbourne Clipper*, 1877.

Messick, Mary Ann. *History of Baxter County, 1873-1973*. Mountain Home Chamber of Commerce, 1973.

UNITED STATES DEPARTMENT OF THE INTERIOR  
NATIONAL PARK SERVICE

NATIONAL REGISTER OF HISTORIC PLACES  
EVALUATION/RETURN SHEET

REQUESTED ACTION: NOMINATION

PROPERTY Davis House  
NAME:

MULTIPLE  
NAME:

STATE & COUNTY: ARKANSAS, Baxter

DATE RECEIVED: 2/21/95 DATE OF PENDING LIST: 3/07/95  
DATE OF 16TH DAY: 3/23/95 DATE OF 45TH DAY: 4/07/95  
DATE OF WEEKLY LIST:

REFERENCE NUMBER: 95000271

NOMINATOR: STATE

REASONS FOR REVIEW:

APPEAL: N DATA PROBLEM: N LANDSCAPE: N LESS THAN 50 YEARS: N  
OTHER: N PDIL: N PERIOD: N PROGRAM UNAPPROVED: N  
REQUEST: N SAMPLE: N SLR DRAFT: N NATIONAL: N

COMMENT WAIVER: N

☒ ACCEPT ☐ RETURN ☐ REJECT 3/23/95 DATE

Entered in the  
National Register

ABSTRACT/SUMMARY COMMENTS:

RECOM./CRITERIA \_\_\_\_\_

REVIEWER \_\_\_\_\_ DISCIPLINE \_\_\_\_\_

TELEPHONE \_\_\_\_\_ DATE \_\_\_\_\_

DOCUMENTATION see attached comments Y/N see attached SLR Y/N





Davis House  
Norfolk, Baxter Co., Arkansas  
Photo by K. Story  
October 1994  
Negative on file at AHAP  
View from the west









Davis House  
Norfolk, Baxter Co., Arkansas  
Photo by K. Story  
October 1994  
Negative on file at ANPP  
View from the northwest





Davis House

Norfolk, Baxter Co., Arkansas

Photo by K. Story

October 1994

Negative on file at AHP

View from the northwest





Davis House  
Norfolk, Baxter Co., Arkansas  
Photo by K. Story, October 1994  
Negative on file at AHPP  
View from the north





Davis House  
Nortfork, Baxter Co., Arkansas  
Photo by K. Story  
October 1994  
Negative on file at AHPP  
View from the northeast





Davis House  
Norfolk, Baxter Co., Arkansas  
photo by K. Story  
October 1994

Negative on file at AHPP  
View from the southwest







Davis House  
Norton, Baxter Co., Arkansas  
Photo by K. Story  
October 1994  
Negative on file at AHPP  
View of rear elevation windows  
from the east





Davis Hoose  
Norfolk, Baxter Co., Arkansas  
Photo by K. Story  
Negative on file at AHPP  
View from the west







Davis House  
Norfolk, Baxter Co., Arkansas  
Photo by K. Story  
October 1994  
Negative on file at AHPP  
View of front entries from  
the west





Davis House

Norfolk, Baxter Co., Arkansas

Photo by K. Story

October 1994

Negative on file at AHPP

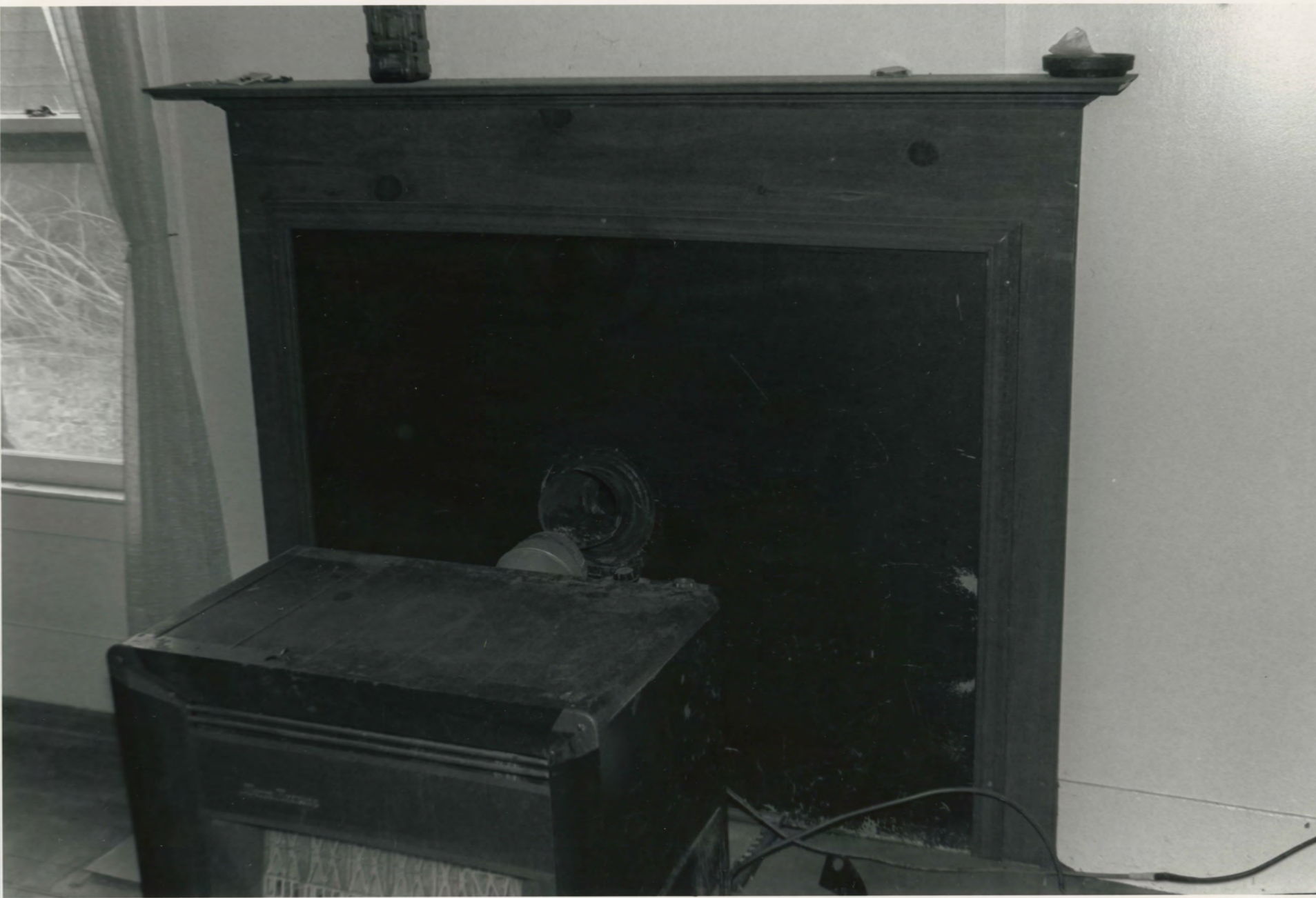
View of chimney from the  
southwest





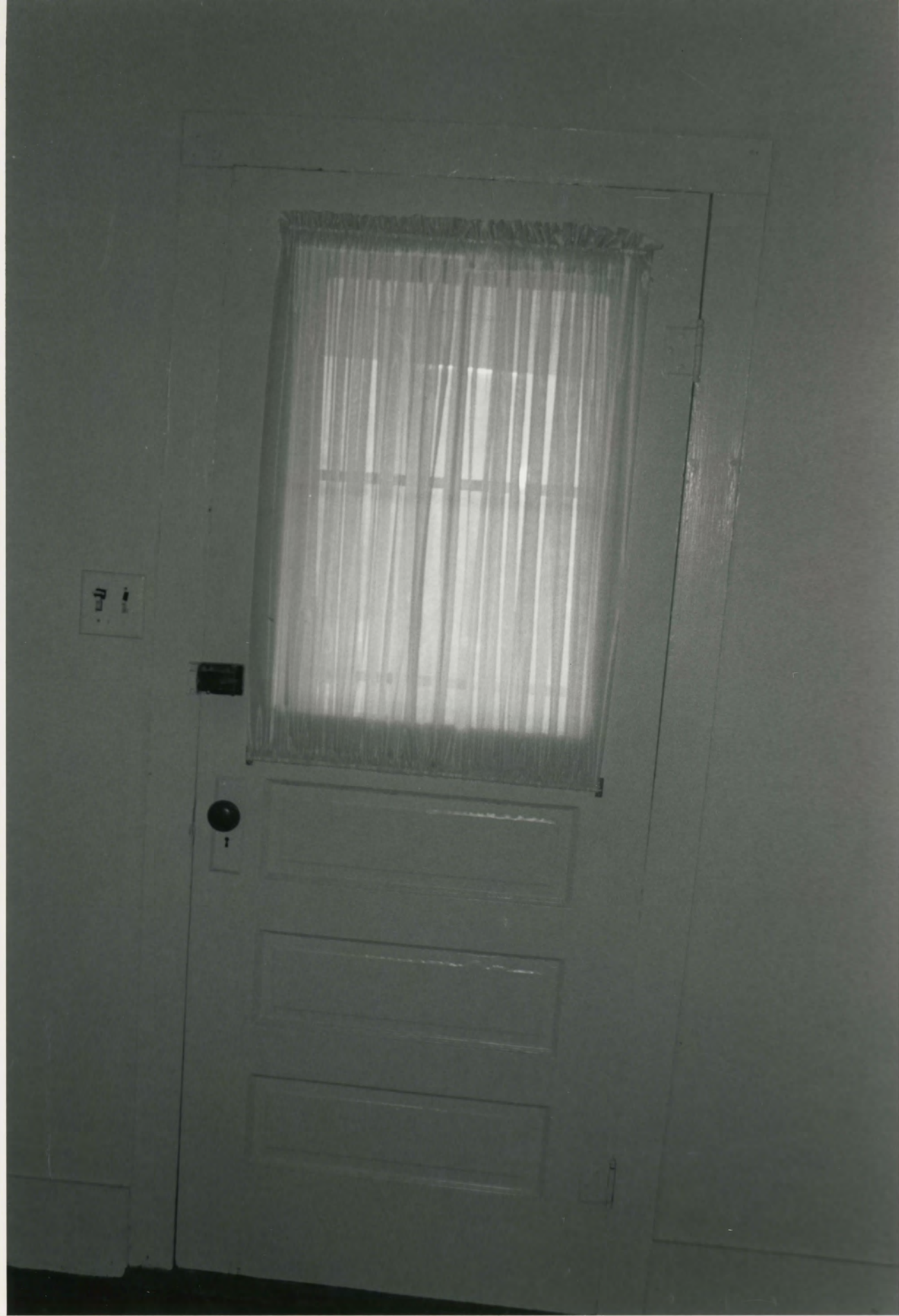
Davis House  
Norfolk, Barter Co., Arkansas  
Photo by K. Story, October 1994  
Negative on file at AHPP  
View of front dormer  
from the northwest





Davis House  
Norfolk, Baxter Co., Arkansas  
Photo by K. Story  
October 1994  
Negative on file at AHPP  
View of mantelpiece from  
the north





Davis House  
Nonfork, Baxter Co., Arkansas  
Photo by K. Story  
October 1994  
Negative on file at AHPp  
View of front door from  
the east





Davis House  
Norfolk, Baxter Co., Arkansas  
Photo by R. Story  
October 1994  
Negative on file at AHPP  
View of floor







Davis House  
Norfolk, Baxter Co., Arkansas  
photo by K. Story

October 1994

Negative on file at AHPD

View of second floor landing



Davis House  
Norfolk, Baxter Co., Arkansas  
UTM: 15/564180/4007260

UNITED STATES  
DEPARTMENT OF THE INTERIOR  
GEOLOGICAL SURVEY

NORFORK QUADRANGLE  
ARKANSAS—BAXTER CO.  
7.5 MINUTE SERIES (TOPOGRAPHIC)

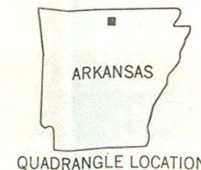


Mapped, edited, and published by the Geological Survey  
Control by USGS and USC&GS  
Topography by photogrammetric methods from aerial  
photographs taken 1964. Field checked 1966  
Polyconic projection. 1927 North American datum  
10,000-foot grid based on Arkansas coordinate system, north zone  
1000-meter Universal Transverse Mercator grid ticks,  
zone 15, shown in blue  
Fine red dashed lines indicate selected fence and field lines where  
generally visible on aerial photographs. This information is unchecked

UTM GRID AND 1966 MAGNETIC NORTH  
DECLINATION AT CENTER OF SHEET

SCALE 1:24,000  
1 1000 0 1000 2000 3000 4000 5000 6000 7000 FEET  
1 KILOMETER  
CONTOUR INTERVAL 20 FEET  
DATUM IS MEAN SEA LEVEL

THIS MAP COMPLIES WITH NATIONAL MAP ACCURACY STANDARDS  
FOR SALE BY U. S. GEOLOGICAL SURVEY, DENVER, COLORADO 80225, OR WASHINGTON, D. C. 20242  
AND BY THE ARKANSAS GEOLOGICAL COMMISSION, LITTLE ROCK, ARKANSAS 72201  
A FOLDER DESCRIBING TOPOGRAPHIC MAPS AND SYMBOLS IS AVAILABLE ON REQUEST

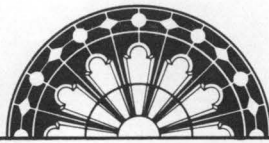


ROAD CLASSIFICATION  
Medium-duty ——— Light-duty ———  
Unimproved dirt ———  
State Route ———

NORFORK, ARK.  
N3607.5—W9215/7.5  
1966

AMS 7556 III NE—SERIES Y884

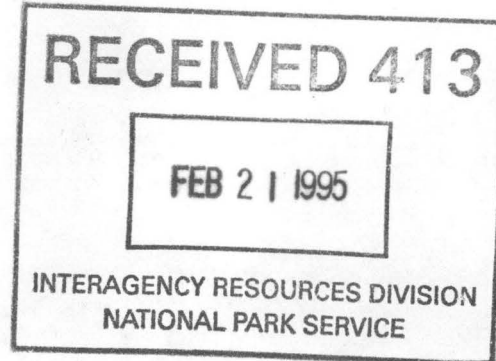




ARKANSAS  
HISTORIC  
PRESERVATION  
PROGRAM

February 7, 1995

Carol D. Shull  
Chief of Registration  
United State Department of the Interior  
National Register of Historic Places  
National Park Service  
800 North Capitol Street, Suite 250  
Washington, D.C. 20002



RE: ✓ Davis House  
Norfolk, Baxter County

Pettigrew School  
Pettigrew, Madison County

Dear Carol:

We are enclosing for your review the nomination of the above referenced properties. The Arkansas Historic Preservation Program has complied with all applicable nominating procedures and notification requirements in the nomination process.

Thank you for your consideration in this matter.

Sincerely,

Cathy Buford Slater  
State Historic Preservation Officer

CBS:br

Enclosures

