



ST. PAUL'S.

Photo. by J. N. Furlong The First Episcopal Church in N. M. Las Vegas, N. M.

LAS VEGAS & VICINITY.

The First Episcopal Church in Las Vegas,
New Mexico.

2. St. Paul's Episcopal Church (Guild Hall), J.N. Purton, 1876, W (TITLE 17 U. S. CODE).
Denver Public Library.

CREDIT

DENVER PUBLIC LIBRARY
WESTERN HISTORY DEPARTMENT

PHOTO BY J. M. Gurlong
REPRODUCTION OF PRINT
IS SUBJECT TO USE FEE

NUMBER # 04797

New Mexico. Cities
Las Vegas.
Churches



Las Vegas N.M. Homes



3. Las Vegas, N. M. Homes; ca. 1910,
Photo Collection, Donnelly Library, New
Mexico Highland University, Las Vegas.



4. Sixth Street between Baca and Friedman; North New Town District; Las Vegas, New Mexico; Chris Wilson 1982; Citizen's Committee for Historic Preservation, Las Vegas; looking NW at SW side of Sixth; Significant structures.



5. 905 Seventh; North New Town District; Las Vegas, New Mexico; Chris Wilson; 1982; Citizen's Committee for Historic Preservation Las Vegas; looking NW at NE side; Contributing.



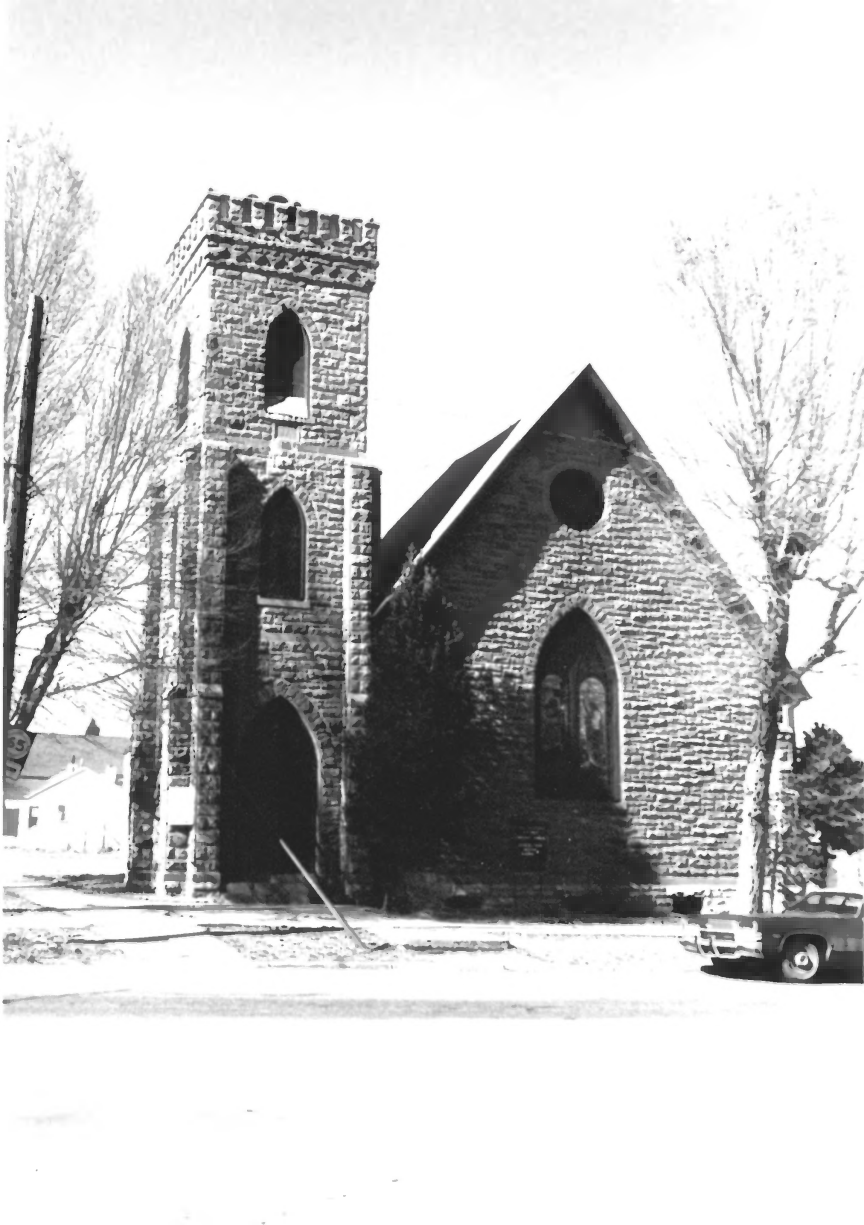
6. 1020 Fifth (201); North New
Town District; Las Vegas, New
Mexico; Chris Wilson; 1982;
Citizen's Committee for Historic
Preservation, Las Vegas; NE at SW
facade; Contributing.



7. 809 Third ((273); North New
Town District; Las Vegas, New
Mexico; Chris Wilson; 1982.
Citizen's Committee for Historic
Preservation, Las Vegas; Nw at NE
facade; Significant;



8. Lutz-Bacharach House, 1003
Fifth (183); North New Town
District; Las Vegas, New Mexico;
Chris Wilson; 1982; Citizen's
Committee for Historic Preservation,
Las Vegas; NW at E & S facades;
Significant;



- 9. The Second St. Pauls Episcopal Church, National and Eight; North New Town District; Las Vegas, New Mexico; Chris Wilson; 1982; Citizen's Committee for Historic Preservation, Las Vegas; NE at S facade; Significant;



FOR SALE
BRILLIANT
WELL LOCATED

10. DT Lowery House, 519
Washington; North New Town District;
Las Vegas, New Mexico; Chris Wilson;
1982; Citizen's Committee for
Historic Preservation, Las Vegas; SE
at W facade; Significant;



11. 1015 Third (285); North New
Town District; Las Vegas, New
Mexico; Chris Wilson; 1982;
Citizen's Committee for Historic
Preservation, Las Vegas; NW at E
facade; Significant;



3022



12. NJ Dillon House, 1022 Fourth
(221); North New Town District; Las
Vegas, New Mexico; Chris Wilson;
1982; Citizen's Committee for
Historic Preservation, Las Vegas; NE
at W facade; Significant;



13. 1016 Fifth (202); North New
Town District; Las Vegas, New
Mexico; Chris Wilson; 1982;
Citizen's Committee for Historic
Preservation, Las Vegas; NW at W
side; Significant.



14. JE Hurley House, 919 Sixth
(333); North New Town District; Las Vegas, New Mexico; Chris Wilson;
1982; Citizen's Committee for
Historic Preservation, Las Vegas; SN
at E side; Significant.



15. William Mills House, 1103
Seventh (386); North New Town
District; Las Vegas, New Mexico;
Chris Wilson; 1982; Citizen's
Committee for Historic Preservation
Las Vegas; NW at S & E sides;
Significant.



16. Whitmore House, Seventh and
Columbia (435). -

residence

corner, 7th St. and Columbia Ave.

Las Vegas, N. M.

ca. 1904

(Neg. No 51656)

N. New Town
Historic District

PLEASE CREDIT:
MUSEUM OF NEW MEXICO



17. 1209 Eighth (848); North New
Town District; Las Vegas, New
Mexico; Chris Wilson; 1982;
Citizen's Committee for Historic
Preservation, Las Vegas; NW at E & S
sides; Significant.



- 18. Jake Stern House, 1027 Eighth (474); North New Town District; Las Vegas, New Mexico; Chris Wilson; 1982; Citizen's Committee for Historic Preservation, Las Vegas; Significant.



807

0054

19. 907 Third (277); North New Town District; Las Vegas, New Mexico; Chris Wilson; 1982; Citizen's Committee for Historic Preservation, Las Vegas; NW at E side; Significant.



20. 1018 Seventh (409), North New
Town District; Las Vegas, New
Mexico; Chris Wilson; 1982;
Citizen's Committee for Historic
Preservation, Las Vegas; NE at W
facade, Significant.



21. 902 Third (244), North New Town
District; Las Vegas, New Mexico;
Chris Wilson; 1982; Citizen's
Committee for Historic Preservation,
Las Vegas; NE at W side,
Significant.



22. Stoneroad-Jones House, 1021
Fifth (187), North New Town
District; Las Vegas, New Mexico;
Chris Wilson; 1982; Citizen's
Committee for Historic Preservation
Las Vegas; SW at E & N sides,
Significant.



- 23. Emerson House, 925 Seventh (413)-

23. Emerson House, 925 Seventh (413), North New Town District; Las Vegas, New Mexico; Chris Wilson; 1982; Citizen's Committee for Historic Preservation, Las Vegas; S at W facade, Significant.



- 24. D.J. Leahy House, 1028 Seventh
(406), ca. 1905, Museum of New Mexico,
Santa Fe.
-

residence

Las Vegas, N.M.

ca 1900

~~(Neg. No. 51656)~~

**PLEASE CREDIT:
MUSEUM OF NEW MEXICO**



25. F.J. Gehring House, 1103 Eight)
(480), North New Town District; Las
Vegas, New Mexico; Chris Wilson;
1982; Citizen's Committee for
Historic Preservation, Las Vegas; NW
at S & E sides, Significant.



26. Willian Rosenthal House, 824
Seventh (444), North New Town
District; Las Vegas, New Mexico;
Chris Wilson; 1982; Citizen's
Committee for Historic Preservation
Las Vegas; NE at S & W sides,
Significant.



27. Herman Ilfeld House, 1029 Seventh
(421).

27. Herman Ilfeld House, 1029
Seventh (421), North New Town
District; Las Vegas, New Mexico;
Chris Wilson; 1982; Citizen's
Committee for Historic Preservation
Las Vegas; NW at S & E sides,
Significant.



28. Joseph Taichert House, 1045
Eight (478), North New Town
District; Las Vegas, New Mexico;
Chris Wilson; 1982; Citizen's
Committee for Historic Preservation
Las Vegas; NW at S & E sides,
Significant.



801 THE FIDELITY BUILDING 803

NO RIGHT TURN ON RED

29. Fidelity Building, Seventh and National (440), North New Town District; Las Vegas, New Mexico; Chris Wilson; 1982; Citizen's Committee for Historic Preservation Las Vegas; NW at S & E sides, Significant.



30. Harold Raynolds House, 1027
Seventh (420), North New Town
District; Las Vegas, New Mexico;
Chris Wilson; 1982; Citizen's
Committee for Historic Preservation
Las Vegas; NW at S & E sides,
Significant.



31. 1213 Sixth (355), North New
Town District; Las Vegas, New
Mexico; Chris Wilson; 1982;
Citizen's Committee for Historic
Preservation, Las Vegas; NW at S & I
sides, Significant.



32. Arthur Ilfeld House, 1053 Eighth
(479).

32. Arther Ilfeld House, 1053 Eighth
(479), North New Town District; Las
Vegas, New Mexico; Chris Wilson;
1982; Citizen's Committee for
Historic Preservation, Las Vegas; SI
at N & E sides, Significant.



- 33. Joseph Danzinger House, 1031 Eighth (475), North New Town District; Las Vegas, New Mexico; Chris Wilson; 1982; Citizen's Committee for Historic Preservation, Las Vegas; NW at S & E sides, Significant.



- 34. Seventh and Baca, North New
Town District; Las Vegas, New
Mexico; Chris Wilson; 1982;
Citizen's Committee for Historic
Preservation, Las Vegas; NW at #
418, Contributing.



-35. 1220 Sixth (366), North New
Town District; Las Vegas, New
Mexico; Chris Wilson; 1982;
Citizen's Committee for Historic
Preservation, Las Vegas; NE at S & W
sides, Contributing.



36. I.H. Drake House, 1115 Sixth
(351), North New Town District; Las
Vegas, New Mexico; Chris Wilson;
1982; Citizen's Committee for
Historic Preservation, Las Vegas;
Significant.



37. Arthur Jaffa House, 1046 Sixth (324), North New Town District; Las Vegas, New Mexico; Chris Wilson; 1982; Citizen's Committee for Historic Preservation, Las Vegas; NE at S & W sides, Significant.



38. J.H. Stearns House, 921 Fifth
(182), North New Town District; Las
Vegas, New Mexico; Chris Wilson;
1982; Citizen's Committee for
Historic Preservation, Las Vegas; NE
at S & E sides, contributing.



- 39. 825 Third (275), North New Town
District; Las Vegas, New Mexico;
Chris Wilson; 1982; Citizen's
Committee for Historic Preservation,
Las Vegas; SW at E & N sides,
Contributing.



40. 924 Seventh (414), North New
Town District; Las Vegas, New
Mexico; Chris Wilson; 1982;
Citizen's Committee for Historic
Preservation, Las Vegas; NE at S & W
sides, Significant.



- 41. 810 Seventh (448), North New Town District; Las Vegas, New Mexico; Chris Wilson; 1982; Citizen's Committee for Historic Preservation, Las Vegas; NE at S & W sides, Contributing.



42. NW along Third between Columbia
and Washington, North New Town
District; Las Vegas, New Mexico;
Chris Wilson; 1982; Citizen's
Committee for Historic Preservation,
Las Vegas; 3 Significant structures.



43. NW along Fourth between Columbia and Washington, North New Town District; Las Vegas, New Mexico; Chris Wilson; 1982; Citizen's Committee for Historic Preservation, Las Vegas; first house Contributing.



CHEVROLET

- 44. SW along Fourth between
Columbia and Washington, North New
Town District; Las Vegas, New
Mexico; Chris Wilson; 1982;
Citizen's Committee for Historic
Preservation, Las Vegas; 1st Cont.,
2nd Non-Cont. (P.O. Box 1212)



· 45. SE along Eighth at Washington,
North New Town District; Las Vegas,
New Mexico; Chris Wilson; 1982;
Citizen's Committee for Historic
Preservation, Las Vegas; 2
Significant remaining Cont.



46

46. 1042 Sixth (323), North New
Town District; Las Vegas, New
Mexico; Chris Wilson; 1982;
Citizen's Committee for Historic
Preservation, Las Vegas; NE at S &
sides, Non-Contributing.

N 323
↑



#47

47. 906 Fourth (214), North New
Town District; Las Vegas, New
Mexico; Chris Wilson; 1982;
Citizen's Committee for Historic
Preservation, Las Vegas; NE at S & W
sides, Non-Contributing.





48

48. 809 Seventh (438), North New
Town District; Las Vegas, New
Mexico; Chris Wilson; 1982;
Citizen's Committee for Historic
Preservation, Las Vegas; NW at S & E
sides, NON-Contributing.

N 439 / 48