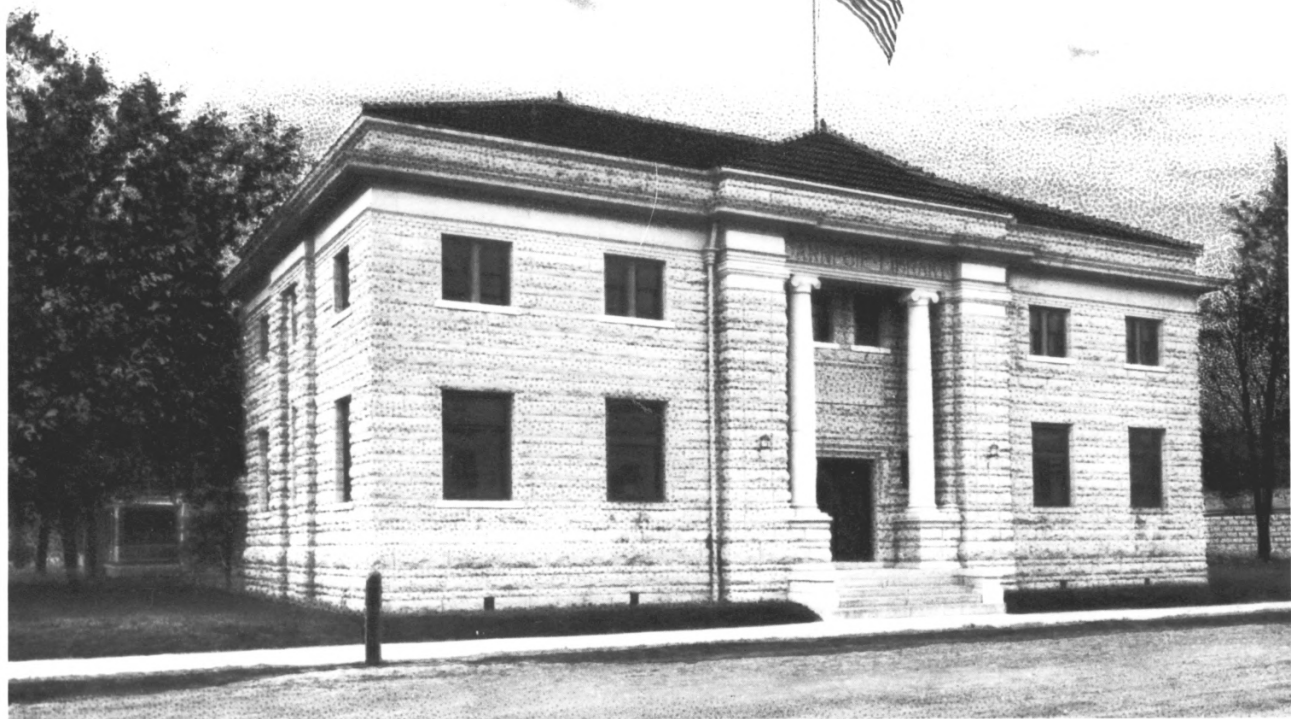


615 - Carnegie Library, Manhattan, Kan.



Manhattan Carnegie Library

Manhattan, Kansas

c. 1904

Kansas State Historical Society

East Facade, South elevation, NW view

1 of 9

CARNEGIE
RILEY COUNTY
ARCHITECT: Earl Earl Associates
ENGINEER: [unreadable]

Manhattan Carnegie Library

Manhattan, Kansas

Martha Hagedorn

September, 1986

Kansas State Historical Society

East Facade, South elevation, NW view

2 of 9



Manhattan Carnegie Library

Manhattan, Kansas

Martha Hagedorn

September, 1986

Kansas State Historical Society

.East Facade, West view

3 of 9



Manhattan Carnegie Library

Manhattan, Kansas

Martha Hagedorn

September, 1986

Kansas State Historical Society

East Facade, Entry Detail, West view

4 of 9



THE
WARD
ARD L

CHENEY
ELECTRICAL & MECHANICAL
CONTRACTORS
1000 10TH ST. S.W.
GRAND RAPIDS, MICH.

Manhattan Carnegie Library

Manhattan, Kansas

Martha Hagedorn

September, 1986

Kansas State Historical Society

East Facade, North elevation, SW view

5 of 9



Manhattan Carnegie Library

Manhattan, Kansas

Martha Hagedorn

September, 1986

Kansas State Historical Society

North elevation, South view

6 of 9



Manhattan Carnegie Library

Manhattan, Kansas

Martha Hagedorn

September, 1986

Kansas State Historical Society

North & West elevations, SE view

7 of 9



Manhattan Carnegie Library

Manhattan, Kansas

Martha Hagedorn

September, 1986

Kansas State Historical Society

West & South elevations, NE view

8 of 9



ERVED

Manhattan Carnegie Library

Manhattan, Kansas

Martha Hagedorn

September, 1986

Kansas State Historical Society

South elevation, North view

9 of 9