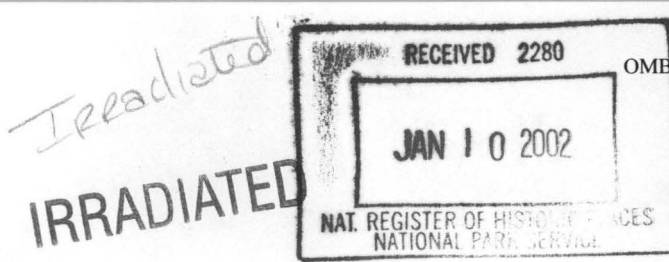


United States Department of the Interior
National Park Service

National Register of Historic Places
Registration Form



OMB No. 10024-0018

This form is for use in nominating or requesting determinations for individual properties and districts. See instructions in *How to Complete the National Register of Historic Places Registration Form* (National Register Bulletin 16A). Complete each item by marking "x" in the appropriate box or by entering the information requested. If an item does not apply to the property being documented, enter "N/A" for "not applicable." For functions, architectural classification, materials, and areas of significance, enter only categories and subcategories from the instructions. Place additional entries and narrative items on continuation sheets (NPS Form 10-900a). Use a typewriter, word processor, or computer, to complete all items.

1. Name of Property

historic name Argenta Historic District (Boundary Increase)

other names/site number N/A

2. Location

street & number Area(s) included in the Western 1/2 of Block 7 and Northern 1/2 of Block 8, Clendenin Addition to the City of North Little Rock, Specifically, 616 Orange St., 116 W. 7th St, 200 W. 7th St., 206 W. 7th St., 212 W. 7th St., 220 W. 7th St., 616 Maple St., and 620 Maple St. ☐ not for publication

city or town North Little Rock ☐ vicinity

state Arkansas code AR county Pulaski code 119 zip code 72114

3. State/Federal Agency Certification

As the designated authority under the National Historic Preservation Act, as amended, I hereby certify that this ☒ nomination ☐ request for determination of eligibility meets the documentation standards for registering properties in the National Register of Historic Places and meets the procedural and professional requirements set for in 36 CFR Part 60. In my opinion, the property ☒ meets ☐ does not meet the National Register criteria. I recommend that this property be considered significant ☐ nationally ☐ statewide ☒ locally. (See continuation sheet for additional comments.)

Calvin Matthews
Signature of certifying official/Title

11/01/01
Date

Arkansas Historic Preservation Program
State or Federal agency and bureau

In my opinion, the property ☐ meets ☐ does not meet the National Register criteria. ☐ See Continuation sheet for additional comments.)

Signature of certifying official/Title

Date

State or Federal agency and bureau

4. National Park Service Certification

I hereby certify that the property is:

- ☒ entered in the National Register.
☐ See continuation sheet
- ☐ determined eligible for the National Register.
☐ See continuation sheet
- ☐ determined not eligible for the National Register.
- ☐ removed from the National Register.
- ☐ other, (explain:) _____

Signature of the Keeper (for)

Date of Action

Sarah D. Pope

2/22/02



The Department of Arkansas Heritage

Mike Huckabee, Governor
Cathie Matthews, Director

Arkansas Arts Council

Arkansas Natural Heritage
Commission

Historic Arkansas Museum

Delta Cultural Center

Old State House Museum



Arkansas Historic Preservation Program

1500 Tower Building
323 Center Street
Little Rock, AR 72201

(501)324-9880

fax: (501)324-9184

tdd: (501)324-9811

e-mail:

info@arkansaspreservation.org

website:

www.arkansaspreservation.org

November 1, 2001

Carol D. Shull
Chief of Registration
United State Department of the Interior
National Register of Historic Places
National Park Service
800 North Capitol Street, Suite 250
Washington, D.C. 20002

RE: Argenta Historic District (Boundary Increase)- North Little Rock, Pulaski
County

Dear Carol:

We are enclosing for your review the nomination of the above-
referenced property. The Arkansas Historic Preservation
Program has complied with all applicable nominating
procedures and notification requirements in the nomination
process.

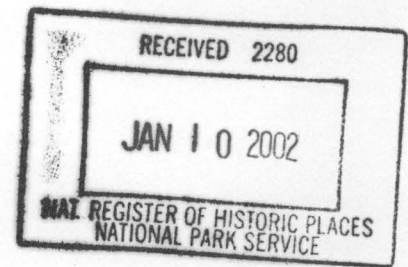
Thank you for your consideration in this matter.

Sincerely,

Cathie Matthews
State Historic Preservation Officer

CM:zc

Enclosures



An Equal Opportunity Employer



United States Department of the Interior
National Park Service

National Register of Historic Places Registration Form

This form is for use in nominating or requesting determinations for individual properties and districts. See instructions in *How to Complete the National Register of Historic Places Registration Form* (National Register Bulletin 16A). Complete each item by marking "x" in the appropriate box or by entering the information requested. If an item does not apply to the property being documented, enter "N/A" for "not applicable." For functions, architectural classification, materials, and areas of significance, enter only categories and subcategories from the instructions. Place additional entries and narrative items on continuation sheets (NPS Form 10-900a). Use a typewriter, word processor, or computer, to complete all items.

1. Name of Property

historic name Argenta Historic District (Boundary Increase)

other names/site number N/A

2. Location

street & number Area(s) included in the Western 1/2 of Block 7 and Northern 1/2 of Block 8, Clendenin Addition to the City of North Little Rock, Specifically, 616 Orange St., 116 W. 7th St, 200 W. 7th St., 206 W. 7th St., 212 W. 7th St., 220 W. 7th St., 616 Maple St., and 620 Maple St. ☐ not for publication

city or town North Little Rock ☐ vicinity

state Arkansas code AR county Pulaski code 119 zip code 72114

3. State/Federal Agency Certification

As the designated authority under the National Historic Preservation Act, as amended, I hereby certify that this ☒ nomination ☐ request for determination of eligibility meets the documentation standards for registering properties in the National Register of Historic Places and meets the procedural and professional requirements set for in 36 CFR Part 60. In my opinion, the property ☒ meets ☐ does not meet the National Register criteria. I recommend that this property be considered significant ☐ nationally ☐ statewide ☒ locally. (See continuation sheet for additional comments.)

Catherine Matthews
Signature of certifying official/Title

11/01/01
Date

Arkansas Historic Preservation Program

State or Federal agency and bureau

In my opinion, the property ☐ meets ☐ does not meet the National Register criteria. ☐ See Continuation sheet for additional comments.)

Signature of certifying official/Title

Date

State or Federal agency and bureau

4. National Park Service Certification

I hereby certify that the property is:

☒ entered in the National Register.
☐ See continuation sheet

☐ determined eligible for the
National Register.

☐ See continuation sheet

☐ determined not eligible for the
National Register.

☐ removed from the National
Register.

☐ other, (explain): _____

Signature of the Keeper

Date of Action

Entered in the
National Register

2/22/02

Argenta Historic District (Boundary Increase)

Pulaski County, Arkansas

Name of Property

County and State

5. Classification

Ownership of Property

(Check as many boxes as apply)

- ☒ private
☒ public-local
☐ public-State
☒ public-Federal

Category of Property

(Check only one box)

- ☐ building(s)
☒ district
☐ site
☐ structure
☐ object

Number of Resources within Property

(Do not include previously listed resources in count.)

Contributing

Noncontributing

6

2

buildings

0

0

sites

0

0

structures

0

0

objects

6

2

Total

Name of related multiple property listing

(Enter "N/A" if property is not part of a multiple property listing.)

Number of Contributing resources previously listed in the National Register

109

6. Function or Use

Historic Functions

(Enter categories from instructions)

Domestic

Multiple Family Dwelling

Current Functions

(Enter categories from instructions)

Domestic

Multiple Family Dwelling

Commercial

7. Description

Architectural Classification

(Enter categories from instructions)

Colonial Revival

Vernacular Folk Form

Post WWII Mid-Century Residential

Materials

(Enter categories from instructions)

Foundation Brick

walls Wood/Weatherboard

roof Asphalt

other

Narrative Description

(Describe the historic and current condition of the property on one or more continuation sheets.)

United States Department of the Interior
National Park Service

National Register of Historic Places Continuation Sheet

Section number 7 Page 1

Summary

The amendment to the Argenta Historic District contains portions of two blocks adjoining an eastern edge of the residential area of the district. The area included in the proposed boundary increase contains a total of eight structures, of which six are historically significant to the development of the neighborhood and contemporaneous with the period of significance of the original Argenta Historic District nomination.

Elaboration

The amendment to the existing Argenta Historic District (listed on the National Register of Historic Places 03-15-93) is composed of portions of two blocks adjoining an eastern edge of the residential area of the district. The area in the amendment contains a total of eight structures, six of which are historic and contribute to the significance of the district. Of the six contributing properties in the amendment, two were individually listed on the National Register on 11-19-93- Hodge-Cook House at 620 Maple Street (PU3927) and the Cook House at 116 West Seventh Street (PU4113). Three of the six contributing structures in this amendment (200 W. 7th, 206 W. 7th and 220 W. 7th) were sheathed in asbestos siding and determined non-contributing to the Argenta Historic District when the nomination was prepared. The non-historic siding on these three properties was removed in 1999, displaying their original wood exterior walls. The house located at 616 Orange Street was constructed in 1947 and was not yet fifty years old when the original nomination was listed on the National Register. The two non-contributing properties in this boundary increase are a one-story frame house at 212 W. 7th Street (PU4119) which was constructed in the mid 1950s and a one-story brick veneered commercial building constructed at 616 Maple Street (PU3948) in 1980.

1. 200 West Seventh Street- a.k.a. 621 Maple Street (PU3929)

Constructed c. 1905, this two-story frame Colonial Revival style residence features an irregular plan echoing a transition from the typical Queen Anne style plan. A steep hip roof tops the house. Gabled projections rise from the roofline on the east and front (north). A two-story gabled bay is located on the west elevation of the house. Asbestos siding placed on the house in the 1950s was removed in 1999, exposing original narrow weatherboard exterior walls. The house rests on a continuous brick foundation. Fenestration consists on one-over-one double-hung wood windows in varying sizes. A full width one-story porch marks the front (north) of the house. This porch is covered by a hip roof, which is supported by square brick columns. A patterned brick balustrade runs around the porch. An original small shed roof porch on the east elevation features square brick columns and brick balustrade similar to the front (north) [porch]. The east elevation porch was expanded and partially enclosed after 1947.

United States Department of the Interior
National Park Service

National Register of Historic Places Continuation Sheet

Section number 7 Page 2

As was historically common in the Argenta area, the house at 200 West 7th Street was converted into a multi-family unit in the early 1940s. Asbestos siding was applied to the exterior during the 1950s. The house remained a two family until the 1970s when it was divided into multiple rental spaces. This house is a contributing structure in the amendment to the Argenta Historic District.

2. 206 West Seventh Street (PU4118)- The one-story frame residence located at 206 W. 7th Street was constructed around 1905. It is a vernacular folk form house with cross gable roof. A single brick chimney rises from the center of the front gable roof. A second brick chimney is located in the center of the rear gable roof. A three-quarter shed roof porch is located on the front (north) elevation of the house. The porch is supported by turned wood posts. Double-hung wood windows vary from two-over-one to one-over-one and front (north) windows are six-over-six lights. The houses rests on a continuous brick foundation. The original T-shaped plan of the house was infilled on the west elevation prior to 1939. An unsympathetic shed roof addition has been added to the rear (south) of the house. Pink asbestos siding added during the 1950s was removed in 1999. This house is a contributing historic component of the amendment to the Argenta Historic District.
3. 212 West Seventh Street (PU4119)- This small frame residence was constructed in the mid 1950s and does not contribute to the historic significance of the district.
4. 220 West Seventh (PU4120)- This large two-story house was constructed c.1905. It features a steep hip roof with two-story gabled bays on the front (north), east and west. An original two-story front (north) porch was rebuilt and enclosed during the 1950s. During this same time, asbestos siding was applied to the exterior. Windows on the body of the house have been replaced with small metal windows, but the original window openings remain visible. Asbestos siding was removed from the exterior walls of the house in 1999, exposing the original narrow weatherboard and decorative shingles in the gable ends. One of the few remaining large homes constructed in the district in the early years of the twentieth century, this house contributes to the historic significance of the district.
5. 616 Orange Street (PU3948)- The two-story wood frame house located immediately south of 220 West 7th was constructed in 1947 as a two-family unit. The rectangular shaped house is topped with a low-pitched gablet roof. Windows are wood double-hung. A full width one-story porch spans the front (west elevation). Although the house has only minimal detailing, it contributes to the district in its representation of Post World War II construction.

United States Department of the Interior
National Park Service

National Register of Historic Places Continuation Sheet

Section number 7 Page 3

6. Hodge-Cook House at 620 Maple Street (PU3927). The Hodge-Cook House was listed on the National Register 11-19-93. The house is a one and one-half story vernacular version of the Colonial Revival style. Constructed c. 1898, the house exemplifies the transition from the Queen Anne style with irregular massing to the simpler Colonial Revival style with simple decoration. A steep hipped roof features prominent hipped roof dormers. A front facing gabled bay contains a set of three double-hung windows and features a multi-paned fanlight in its gable end.
7. Cook House at 116 West Seventh Street (PU4113). The Cook House, individually listed on the National Register of Historic Places 11-19-93, was constructed in 1915. The house is a rectangular shaped, one-story frame residence that exemplifies simple vernacular architecture. Its side-gabled roof spanning a two-room depth typifies it as a massed-plan vernacular folk house common in the rural south well into the 20th century.
8. 616 Maple Street (PU 3926). The one-story commercial structure with low-pitched gable roof and brick veneered exterior walls was constructed in 1980 and does not contribute to the historic significance of the boundary increase to the Argenta Historic District.

Name of Property

County and State

8. Statement of Significance

Applicable National Register Criteria

(Mark "x" in one or more boxes for the criteria qualifying the property for National Register listing.)

- ☒ **A** Property is associated with events that have made a significant contribution to the broad patterns of our history.
- ☐ **B** Property is associated with the lives of persons significant in our past.
- ☐ **C** Property embodies the distinctive characteristics of a type, period, or method of construction or represents the work of a master, or possesses high artistic values, or represents a significant and distinguishable entity whose components lack individual distinction.
- ☐ **D** Property has yielded, or is likely to yield, information important in prehistory or history.

Criteria Considerations

(Mark "x" in all the boxes that apply.)

Property is:

- ☐ **A** owned by a religious institution or used for religious purposes.
- ☐ **B** removed from its original location.
- ☐ **C** moved from its original location.
- ☐ **D** a cemetery.
- ☐ **E** a reconstructed building, object, or structure.
- ☐ **F** a commemorative property
- ☐ **G** less than 50 years of age or achieved significance within the past 50 years.

Levels of Significance (local, state, national)

Local

Areas of Significance (Enter categories from instructions)

Community Planning and Development

Period of Significance

1900-1950

Significant Dates

N/a

Significant Person (Complete if Criterion B is marked)

N/a

Cultural Affiliation (Complete if Criterion D is marked)

N/a

Architect/Builder

Unknown

Narrative Statement of Significance

(Explain the significance of the property on one or more continuation sheets.)

9. Major Bibliographical References

Bibliography

(Cite the books, articles, and other sources used in preparing this form on one or more continuation sheets.)

Previous documentation on file (NPS):

- ☐ preliminary determination of individual listing (36 CFR 67) has been requested
- ☐ previously listed in the National Register
- ☐ Previously determined eligible by the National Register
- ☐ designated a National Historic Landmark
- ☐ recorded by Historic American Buildings Survey

#

Primary location of additional data:

- ☒ State Historic Preservation Office
- ☐ Other State Agency
- ☐ Federal Agency
- ☐ Local Government
- ☐ University
- ☐ Other

Name of repository:

United States Department of the Interior
National Park Service

National Register of Historic Places Continuation Sheet

Section number 8 Page 1

Summary

The original nomination of the Argenta Historic District in North Little Rock, Arkansas (listed on the National Register of Historic Places 03-15-93) recognizes an ensemble of historic buildings constructed during the period from 1890 to 1940. This amendment seeks to add an area adjacent to the eastern edge of the district containing a total of eight structures. Of these eight structures, six contribute to the significance of the historic district. The area contained in the amendment represents the same development and growth patterns historically important to the Argenta Historic District.

Elaboration

The amendment to the Argenta Historic District contains portions of two blocks located adjacent to an eastern edge of the district. The area in the amendment contains a total of eight structures, six of which contribute to the district. The amendment contains two non-contributing structures- a small frame house constructed in the mid-1950s (212 W. 7th Street) and a commercial building built in 1980 (616 Maple Street).

The houses located at 200 W. 7th a.k.a. 621 maple (PU3929) and 220 West 7th (PU4120) are large two-story Colonial Revival style homes constructed c. 1905. Both were occupied as single family residences through the 1930s, but in the 1940s both were converted into multi-family spaces due to demand for housing. The house at 206 W. 7th (PU4118) is a one-story frame vernacular folk house which has remained a single-family home. These three properties in the 200 block of W. 7th Street were covered in asbestos siding during the 1950s. This siding was removed in 1999 revealing the original weatherboard exterior walls.

The house at 616 Orange Street (PU3948) was constructed in 1947 as a two-family unit. Minimal Traditional in style, the house features little detailing. A low-pitched gabled roof and full-width two-story porch characterize the house.

Two houses within the amendment boundary were individually listed on the National Register of Historic Places 11-19-93. The Hodge-Cook House at 620 Maple (PU3927) was constructed c. 1898 and is a vernacular example of a one-story Colonial Revival style house. The Cook House at 116 W. 7th (PU4113) was constructed in 1915 and is a simple rectangular-shaped folk form house.

United States Department of the Interior
National Park Service

National Register of Historic Places Continuation Sheet

Section number 8 Page 2

Two non-contributing structures are located in the amendment area. The one-story frame house at 212 W. 7th (PU4119) was constructed c. 1955. A one-story commercial building at 616 maple (PU3926) was constructed in 1980.

The six contributing structures in the amendment to the Argenta Historic District maintain the historic association with the railroad industry which was instrumental in the development of the city of North Little Rock. Thus, due to both the direct associations of the contributing properties in the area to be added to the district with the original development that created this neighborhood, the amendment to the Argenta Historic District is eligible under Criterion A.

Argenta Historic District (Boundary
Increase)

Name of Property

Pulaski County, Arkansas

County and State

United States Department of the Interior
National Park Service

National Register of Historic Places Continuation Sheet

Section number 9 Page 1

Bibliography

Adams, Walter M. *A History, North Little Rock, The Unique City*. (Little Rock: August House, 1986).

Little Rock/North Little Rock City Directories 1890-1995.

North Little Rock Times. Industrial Recovery Number. (North Little Rock Times Printing and Publishing Co., 1936).

Sanborn Fire Insurance Maps of North Little Rock. 1913, 1939 and 1947.

The Times. *North Little Rock, A Pictorial History*. (North Little Rock: The Times, 1991).

Name of Property

County and State

10. Geographical DataAcreage of Property Less than once acre**UTM References**

(Place additional UTM references on a continuation sheet.)

1	<u>15</u>	<u>566837</u>	<u>3846551</u>
	Zone	Easting	Northing
2	<u>15</u>	<u>566989</u>	<u>3846556</u>

3	<u>15</u>	<u>566831</u>	<u>3846510</u>
	Zone	Easting	Northing
4	<u>15</u>	<u>566933</u>	<u>3846500</u>

X See continuation sheet

Verbal Boundary Description

(Describe the boundaries of the property on a continuation sheet.)

Boundary Justification

(Explain why the boundaries were selected on a continuation sheet.)

11. Form Prepared Byname/title Sandra Taylor Smith, Directororganization North Little Rock History Commissiondate October 26, 2001street & number 3427 Magnoliatelephone (501)758-7585city or town North Little Rockstate ARzip code 72116**Additional Documentation**

Submit the following items with the completed form:

Continuation Sheets**Maps**

A USGS map (7.5 or 15 minute series) indicating the property's location

A Sketch map for historic districts and properties having large acreage or numerous resources.

Photographs

Representative black and white photographs of the property.

Additional items

(Check with the SHPO or FPO for any additional items.)

Property Owner

(Complete this item at the request of SHPO or FPO.)

Name Multiple Property Owners

street & number

telephone

city or town

state

zip code

Paperwork Reduction Act Statement: This information is being collected for applications to the National Register of Historic Places to nominate properties for listing or determine eligibility for listing, to list properties, and to amend existing listing. Response to this request is required to obtain a benefit in accordance with the National Historic Preservation Act, as amended (16 U.S.C. 470 *et seq.*)

Estimated Burden Statement: Public reporting burden for this form is estimated to average 18.1 hours per response including time for reviewing instructions, gathering and maintaining data, and completing and reviewing the form. Direct comments regarding this burden estimate or any aspect of this form to the Chief, Administrative Services Division, National Park Service, P. O. Box 37127, Washington, DC 20013-7127; and the Office of Management and Budget, Paperwork Reduction Projects (1024-0018), Washington, DC 20303.

United States Department of the Interior
National Park Service

National Register of Historic Places Continuation Sheet

Section number 10 Page 1

Acree of Property less than one acre

UTM References

	Zone	Easting	Northing
1	<u>15</u>	<u>566837</u>	<u>3846551</u>
2	<u>15</u>	<u>566989</u>	<u>3846556</u>
3	<u>15</u>	<u>566831</u>	<u>3846510</u>
4	<u>15</u>	<u>566933</u>	<u>3846500</u>
5	<u>15</u>	<u>566953</u>	<u>3846469</u>
6	<u>15</u>	<u>566989</u>	<u>3846474</u>

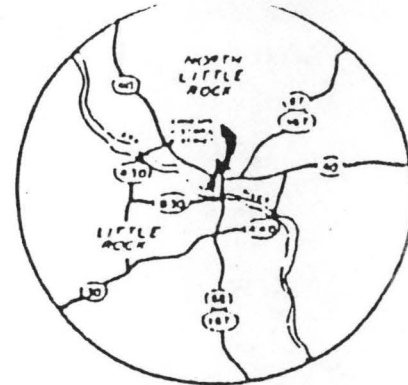
Verbal Boundary Description

The boundary increase to the Argenta Historic District includes the area(s) included in the Western ½ (Lots 7-12) of Block 7 and the Northern ½ (Lots 7-12) of Block 8, Clendenin Addition to the City of North Little Rock, Arkansas

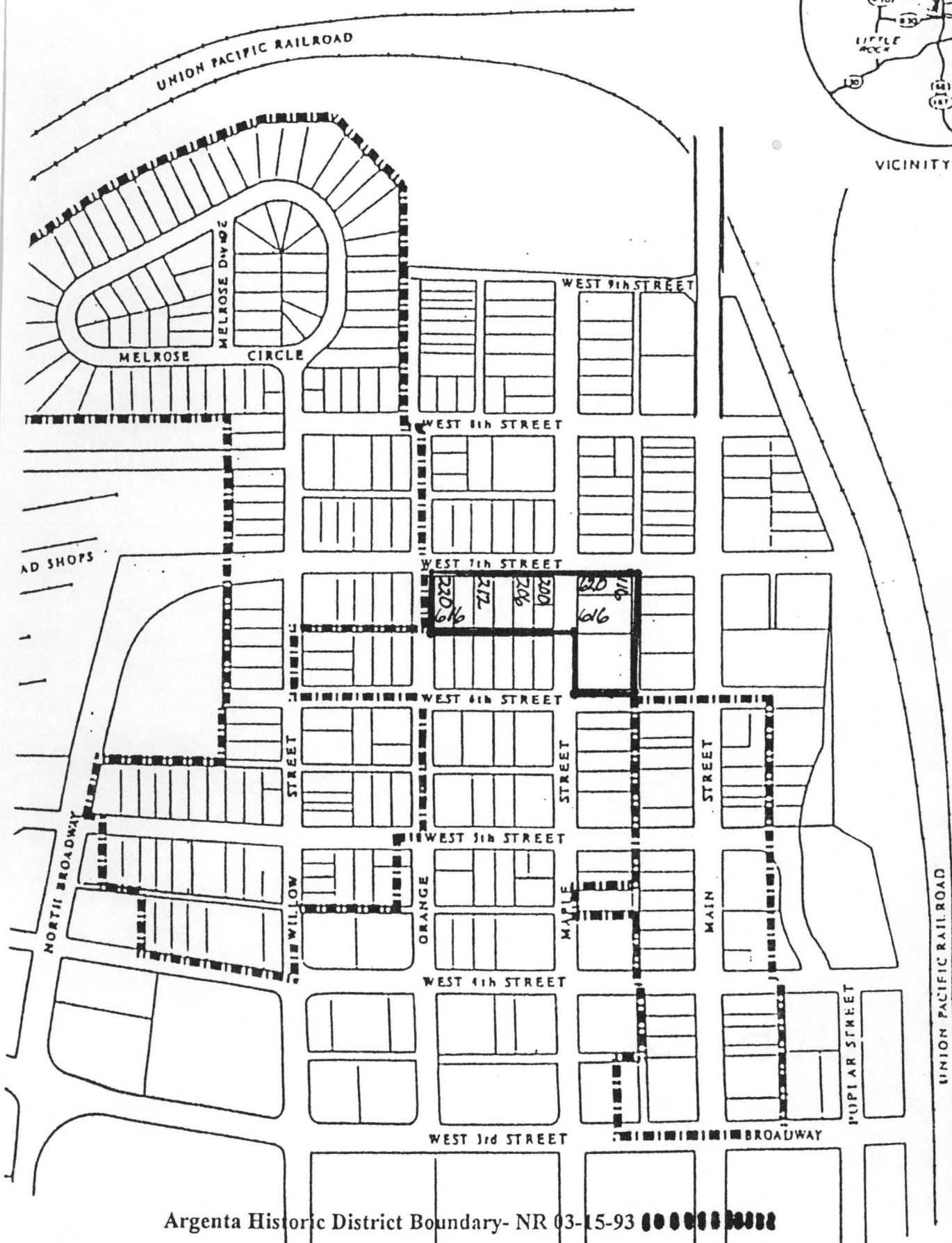
Boundary Justification

The area(s) included in the boundary increase to the Argenta Historic District are adjacent to an edge of the original Argenta Historic District. Removal of non-original wall materials in 1999 caused three additional buildings in the proposed increase area to be determined eligible for Contributing Status in a boundary increase, thus lending the area to contain six contributing properties and two non-contributing.

ARGENTA HISTORIC DISTRICT



VICINITY MAP



Argenta Historic District Boundary- NR 03-15-93

Argenta Historic District (Boundary Increase)

UNITED STATES DEPARTMENT OF THE INTERIOR
NATIONAL PARK SERVICE

NATIONAL REGISTER OF HISTORIC PLACES
EVALUATION/RETURN SHEET

REQUESTED ACTION: NOMINATION

PROPERTY Argenta Historic District (Boundary Increase)
NAME:

MULTIPLE
NAME:

STATE & COUNTY: ARKANSAS, Pulaski

DATE RECEIVED: 1/10/02 DATE OF PENDING LIST: 1/29/02
DATE OF 16TH DAY: 2/14/02 DATE OF 45TH DAY: 2/25/02
DATE OF WEEKLY LIST:

REFERENCE NUMBER: 02000076

REASONS FOR REVIEW:

APPEAL: N DATA PROBLEM: N LANDSCAPE: N LESS THAN 50 YEARS: N
OTHER: Y PDIL: N PERIOD: N PROGRAM UNAPPROVED: N
REQUEST: N SAMPLE: N SLR DRAFT: Y NATIONAL: N

COMMENT WAIVER: N

☒ ACCEPT ☐ RETURN ☐ REJECT 2/28/02 DATE

ABSTRACT/SUMMARY COMMENTS:

RECOM./CRITERIA A

REVIEWER Sarah Pope DISCIPLINE Historian

TELEPHONE 202/343-9534 DATE 2/28/02

DOCUMENTATION see attached comments Y/N/see attached SLR Y/N



1. Argent A Historic District (Boundary increase)
116 W. 7th; 620 maple; 616 maple
2. Pulaski County, AR
3. photo By Sandra Taylor Smith
4. photo taken 21800
5. negative AT AHPP
6. view Looking southeast
7. photo #1



1. Argenta Historic District (Boundary increase)

2 200 W. 7th St.

3. Pulaski County, Arkansas

3. Photo By Sandra Taylor Smith

4. Photo taken 2-18-00

5. Negative at AHDP

6. View Looking Southeast

7. Photo #2



1. Argenta Historic District (Boundary Inclusive)
200 And 206 West 7th Street
2. Pulaski County, AR
3. Photo By Sandra Taylor Smith
4. Photo Taken 2-18-00
5. Negative on file AHPP
6. View Looking Southeast
7. Photo #3



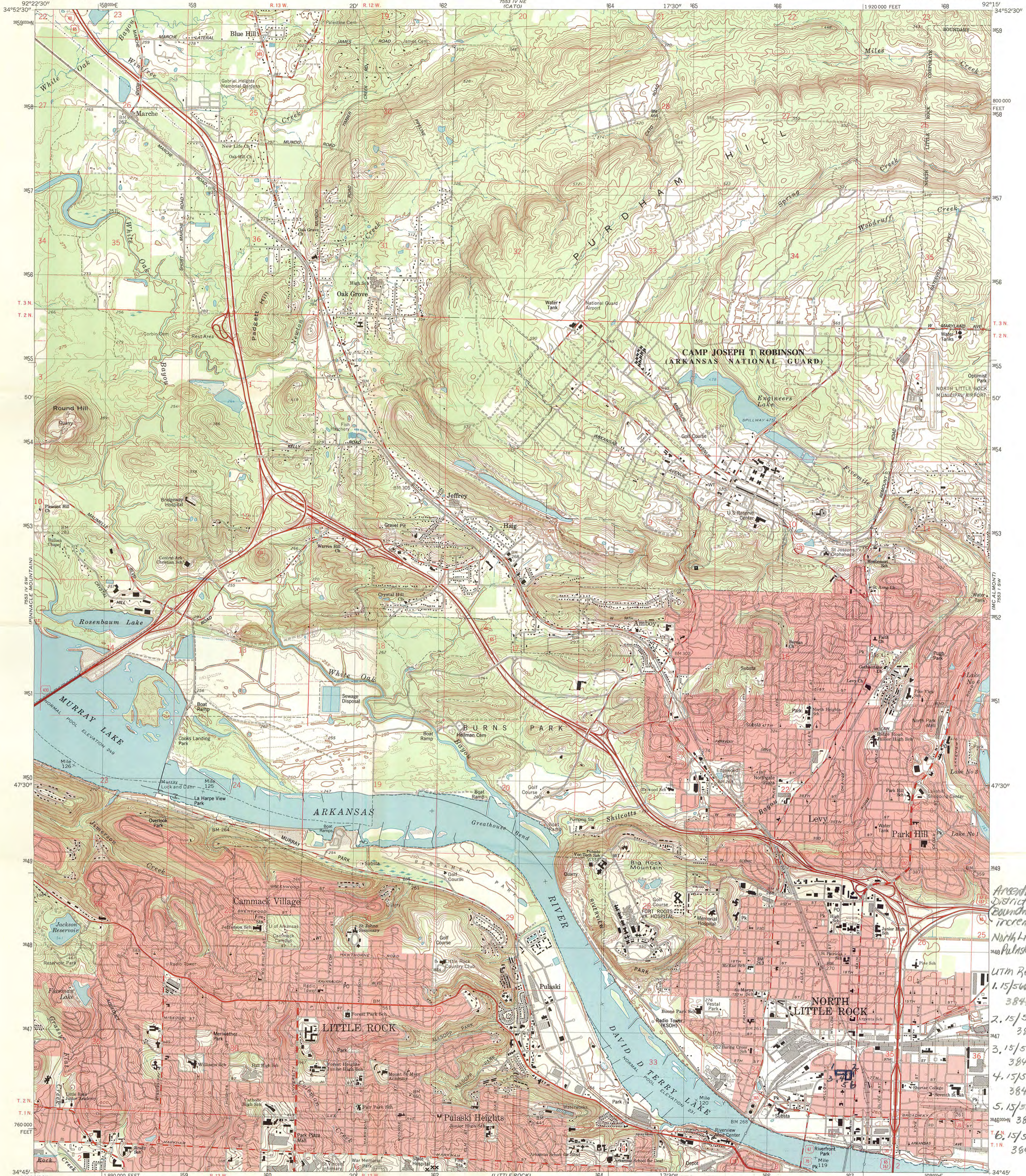
1. Argenta Historic District (Boundary increased)
206 W. 7th St.
2. Pulaski County, AR
3. Photo By Sandra Taylor Smith
4. photo taken 2-18-00
5. NEGATIVE AT AHPD
6. view Looking south
7. photo #4



1. ARSENDA Historic District (Boundary Increase)
220 W. 7th Street
2. Pulaski County AR
3. Photo By Sandra Taylor Smith
4. photo taken 2-18-00
5. NEGATIVE AT AHP
6. View Looking South
7. photo #5



1. ARGENT Historic District (Boundary increase)
616 ORANGE Street
2. Pulaski County, AR
3. Photo By Sandra Taylor Smith
4. Photo taken 4-18-00
5. Negative at AHPD
6. View Looking Northeast
7. Photo #6



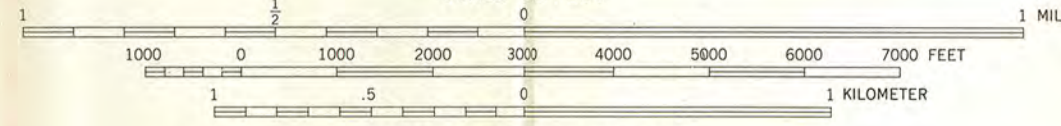
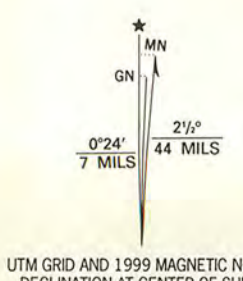
Produced by the United States Geological Survey

Derived from imagery taken 1984 and other sources. Photomicrographs using imagery taken 1996; no major culture or drainage changes observed. PLSS and survey control current as of 1985. Boundaries, other than corporate, verified 1999.

North American Datum of 1983 (NAD 83). Projection and 10 000-foot ticks: Arkansas coordinate system, south zone (Lambert conformal conic). 1000-meter Universal Transverse Mercator grid, zone 15.

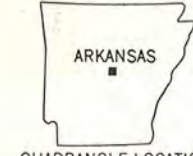
North American Datum of 1983 (NAD 83) is shown by dashed corner ticks. The values of the shift between NAD 27 and NAD 83 for 7.5-minute intersections are obtainable from National Geodetic Survey NADCON software.

There may be private inholdings within the boundaries of the National or State reservations shown on this map.



CONTOUR INTERVAL 10 FEET
DOTTED LINES REPRESENT 5-FOOT CONTOURS
NATIONAL GEODETIC VERTICAL DATUM OF 1929
TO CONVERT FROM FEET TO METERS, MULTIPLY BY 0.3048

THIS MAP COMPLIES WITH NATIONAL MAP ACCURACY STANDARDS
FOR SALE BY U.S. GEOLOGICAL SURVEY, P.O. BOX 25286, DENVER, COLORADO 80225
AND ARKANSAS GEOLOGICAL COMMISSION, LITTLE ROCK, ARKANSAS 72204
A FOLDER DESCRIBING TOPOGRAPHIC MAPS AND SYMBOLS IS AVAILABLE ON REQUEST



ROAD CLASSIFICATION
Primary highway, hard surface
Secondary highway, hard surface
Unimproved road
Interstate Route
U.S. Route
State Route

NORTH LITTLE ROCK, ARK.

1996

NIMA 7553 IV SE-SERIES V884

Ardena Historic District (Boundary Increase)
North Little Rock
Pulaski Co., AR
UTM References:
1. 15/566831/3846551
2. 15/566989/3846556
3. 15/566831/3846510
4. 15/566933/3846500
5. 15/566953/3846469
6. 15/56689/3846474





The Department of Arkansas Heritage

Mike Huckabee, Governor
Cathie Matthews, Director

Arkansas Arts Council

Arkansas Natural Heritage
Commission

Historic Arkansas Museum

Delta Cultural Center

Old State House Museum



Arkansas Historic Preservation Program

1500 Tower Building
323 Center Street

Little Rock, AR 72201

(501)324-9880

fax: (501)324-9184

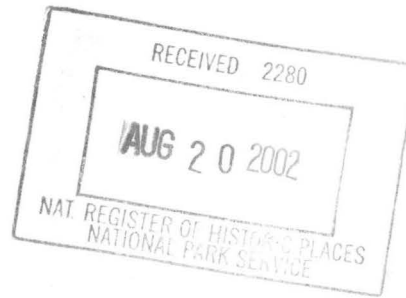
tdd: (501)324-9811

e-mail:

info@arkansaspreservation.org

website:

www.arkansaspreservation.org



November 1, 2001

Carol D. Shull
Chief of Registration
United State Department of the Interior
National Register of Historic Places
National Park Service
800 North Capitol Street, Suite 250
Washington, D.C. 20002

RE: Argenta Historic District (Boundary Increase)- North Little Rock, Pulaski
County

Dear Carol:

We are enclosing for your review the nomination of the above-referenced property. The Arkansas Historic Preservation Program has complied with all applicable nominating procedures and notification requirements in the nomination process.

Thank you for your consideration in this matter.

Sincerely,

Cathie Matthews
State Historic Preservation Officer

CM:zc

Enclosures

