



"Maxwell Place"
Fayette County, Kentucky

Bettie L. Kerr, Historic Commission
253 Market Street
Lexington, KY 40508
August 1982

Photo 1 of 9.
Maxwell Place and its grounds from
the northwest.



"Maxwell Place"
Fayette County, Kentucky

Photograph source and date (recent)
unknown.

Historic Commission
253 Market Street
Lexington, KY 40508

Photo 2 of 9
Maxwell Place from the northeast in
winter.



"Maxwell Place"
Fayette County, Kentucky

Bettie L. Kerr, Historic Commission
253 Market Street
Lexington, KY 40508
August 1982

Photo 3 of 9
East side from northeast.



"Maxwell Place"
Fayette County, Kentucky

Bettie L. Kerr, Historic Commission
253 Market Street
Lexington, KY 40508
August 1982

Photo 4 of 9
Late 19th-century main entrance
doorway within original ca. 1870
frame.



"Maxwell Place"
Fayette County, Kentucky

Bettie L. Kerr, Historic Commission
253 Market Street
Lexington, KY 40508
August 1982

Photo 5 of 9
Main staircase from first-floor
entrance.



"Maxwell Place"
Fayette County, Kentucky

Bettie L. Kerr, Historic Commission
253 Market Street
Lexington, KY 40508
August 1982

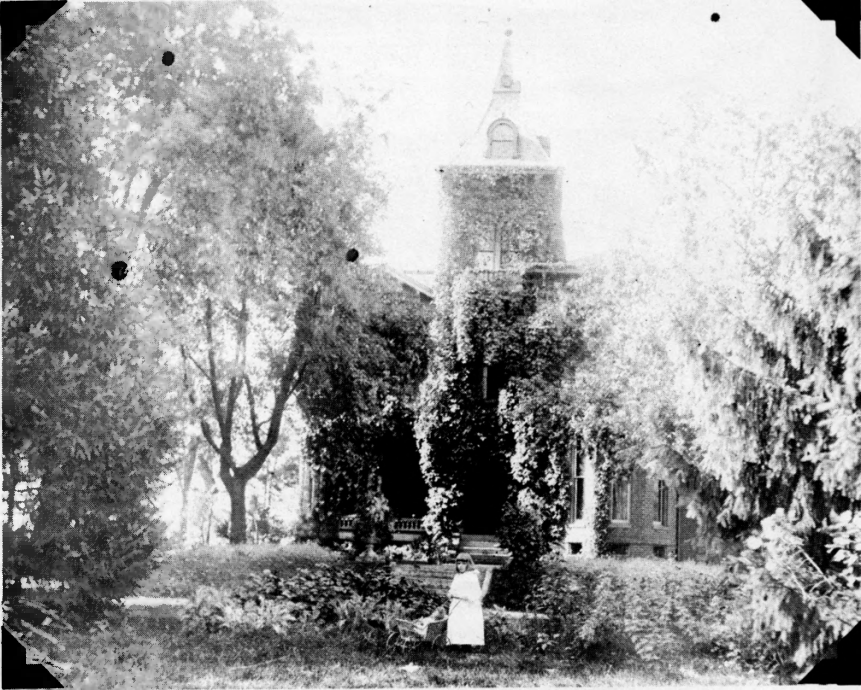
Photo 6 of 9
Main staircase at second-floor level.



"Maxwell Place"
Fayette County, Kentucky

Bettie L. Kerr, Historic Commission
253 Market Street
Lexington, KY 40508
August 1982

Photo 7 of 9.
Arts and Crafts tile mantel in north-
west first-floor room.



"Maxwell Place"
Fayette County, Kentucky

Historic Commission
253 Market Street
Lexington, KY 40508

Photo 8 of 9
View of exterior prior to 1900 with original tower roof and balcony, and parlor porch. From an old photograph in the possession of E.I. Thompson, Lexington as reproduced in Lexington - As It Was (1981), p. 8.