

UNITED STATES DEPARTMENT OF THE INTERIOR
NATIONAL PARK SERVICE

FOR NPS USE ONLY	
RECEIVED	FEB 25 1986
DATE ENTERED	APR 11 1986

**NATIONAL REGISTER OF HISTORIC PLACES
INVENTORY -- NOMINATION FORM**

DEPRESSION-ERA BUILDINGS

CONTINUATION SHEET

ITEM NUMBER

PAGE 1 of 4

NAME: John Day Compound, Supervisor's Warehouse

LOCATION: Malheur National Forest, Supervisor's Office; Congressional District
2, John Day, Oregon (41); Grant County (023)

ADDRESS: USDA Forest Service
Malheur National Forest
139 NE Dayton
John Day, OR 97845

CLASSIFICATION/CATEGORY: District

DESCRIPTION:

Condition

Excellent

Unaltered

Original Site

Assistant Supervisor's House #1002: 1937; 26' x 43'; Rectangular, 1 1/2 story, wood frame, rubble-faced concrete foundation, wood-shingled medium gable roof, hipped roofed dormer on rear slope. Horizontal clapboard exterior, vertical board and batten on gable ends. Coursed-rubble chimney offset on rear roof slope. Six-over-six double-hung sash windows singly and in combinations with mullions. Enclosed gable-roofed porch and rear entrance on south elevation. No decoration. No significant exterior alteration apparent.

Caretaker's House #1003: 1941; 25' x 36'; Rectangular, 1 1/2 story, wood frame, poured concrete foundation, wood-shingled medium gable roof, coursed-rubble stone chimney above offset front gable. Horizontal clapboard exterior, vertical boards, with angular cut, battens every other board on all gable ends. Six-over-six double-hung sash windows singly and in combinations with mullions. A single compound pine tree logo cut from two boards immediately below peak of roof on south elevation. No obvious exterior alteration.

Timber Sale House #1004: 1946; 20' x 30'; Rectangular, 1 story, wood frame, poured concrete foundation, wood-shingled medium gable roof, brick chimney, center, front slope of roof. Horizontal clapboard exterior, wood corner trim, vertical board and batten on gable ends. Six-over-six double-hung sash windows, singly and in combinations with mullions. No decoration. Replacement of some sash windows with aluminum casements. Design and materials compatible with Depression-era structures, albeit built 1946.

UNITED STATES DEPARTMENT OF THE INTERIOR
NATIONAL PARK SERVICE

FOR NPS USE ONLY

RECEIVED

DATE ENTERED

**NATIONAL REGISTER OF HISTORIC PLACES
INVENTORY -- NOMINATION FORM**

DEPRESSION-ERA BUILDINGS

CONTINUATION SHEET

ITEM NUMBER

PAGE 2 of 4

Ranger's House #1006: 1936; 34' x 34'; Square, 1 1/2 story, wood frame, poured concrete foundation, wood-shingled medium gable roof; offset gable north facade; bellcast eaves form porch roof for open verandah running width of north facade supported by squared timbers with curving inset brackets; large hipped-roof dormer on south slope of roof. Coursed, squared-rubble stone chimney, exterior on east elevation, coursed squared-rubble interior chimney offset on south roof. Horizontal clapboard exterior, vertical boards, angular cut, with battens every other board on all gable ends. Six-over-six double-hung sash windows, singly and in combinations with mullions. Decorative shutters with simple pine tree cutouts flank each window on main level. Possible addition to south elevation with aluminum casement windows.

WCF Shop #2100: 1936; 45' x 80'; Rectangular, 2 story, wood frame, wood-shingled hipped gable roof with two offset intersecting gables, two gable-roofed dormers each on front and rear main roof slopes. Horizontal clapboard exterior, vertical boards on offset gable ends. Combinations of nine-light sash windows with mullions. Four large slide-opening doors with windows, main facade. Single well-defined pine tree cut out centered on each gable end. No obvious exterior alteration.

District Warehouse #2300: 1938; 50' x 80'; Rectangular, 1 1/2 story, wood frame, wood-shingled medium gable roof. Horizontal clapboard exterior, vertical boards, angular cut, with battens every other board on gable ends. Six bays in length, two bays deep, vertical board slide-opening doors, interspaced with squared-timber posts having curving inset brackets. Single well-defined pine tree logo centered below peak of roof on each gable end. Large sliding door on north (rear) elevation recently replaced with hinge-opening two-leaf doors.

Fire Warehouse #2200: 1938; 50' x 80'; Rectangular, 1 1/2-story, wood-framed, wood-shingled hipped gable roof, loft and below-ground storage. Horizontal clapboard exterior. Center gable porch, vertical board pediment, on main (east) facade. Exterior stairway with railing to loft entrance, north elevation. Below ground-level entrance, south elevation. Single well-defined pine tree logo centered on east porch gable pediment. Shed-roofed lean-to storage addition to west (rear) elevation.

Open Storage #2301: 1936; 50' x 80'; Rectangular, 1 story, wood frame, poured concrete foundation, wood-shingled medium gable roof, open on east (main) facade, six bays in length, interspaced with squared-timber posts having curving

UNITED STATES DEPARTMENT OF THE INTERIOR
NATIONAL PARK SERVICE

FOR NPS USE ONLY

RECEIVED

DATE ENTERED

**NATIONAL REGISTER OF HISTORIC PLACES
INVENTORY -- NOMINATION FORM**

DEPRESSION-ERA BUILDINGS

CONTINUATION SHEET

ITEM NUMBER

PAGE 3 of 4

inset brackets. Horizontal clapboard exterior, vertical board, angular cut, battens every other board on gable ends. Single, well-defined pine tree logo, slightly above center on each gable end. No obvious alteration.

Barn #2400: 1937; 25' x 37'; Rectangular, poured concrete foundation, wood frame, wood shingled medium gable roof. Horizontal clapboard exterior, vertical boards on gable ends. Hay loft. Six-light horizontal single sash windows. Vertical board slide-opening doors on south and north gable ends. No decoration. No obvious exterior structural alteration.

Gas and Oil House #2500: Rectangular; 1 story, wood framed, poured concrete foundation with coursed rubble masonry veneer, wood shingled roof, center portion of north roof slope extends to form shed-roofed porch cover, supported by heavy squared-timber posts. Coursed squared-rubble faced loading dock extends across west gable end. Horizontal clapboards (1 x 12) exterior, vertical boards, ends angular cut, plain battens on gable ends and porch ends. Six-light single sash windows, singly and in pairs. Porch has been enclosed with horizontal clapboards, single-leaf laminated door offset to right in enclosed porch. Single tree logo cut-out centered on each gable end.

SIGNIFICANCE:

The John Day Supervisor's Warehouse typifies the construction projects undertaken by the Civilian Conservation Corps and signifies the aid to the local community provided by the emergency work-relief program through employment of youth and experienced craftsmen, purchase of building materials and camp supplies, and personal expenditures of enrollees. The property represents the Forest Service's presence in the locality, as the headquarters for field operation, and denotes, via the physical facilities required to carry out the agency's expanding responsibilities, the critical transition in the Service's development from custodial superintendence to extensive resource management. The John Day Supervisor's Warehouse exemplifies the rustic architectural idiom developed by the Forest Service, Pacific Northwest Region, to impart Forest Service identity and to represent its purposes and ideals, and signifies the agency's particular interpretation of a singular expression of early twentieth century American architectural thought. Possessing very high qualities of design and execution, the Supervisor's Warehouse is an excellent example of an architectural location invested with special aesthetic and associative values by the agency that created it.

UNITED STATES DEPARTMENT OF THE INTERIOR
NATIONAL PARK SERVICE

FOR NPS USE ONLY
RECEIVED
DATE ENTERED

**NATIONAL REGISTER OF HISTORIC PLACES
INVENTORY -- NOMINATION FORM**

DEPRESSION-ERA BUILDINGS

CONTINUATION SHEET

ITEM NUMBER

PAGE 4 of 4

The John Day Supervisor's Warehouse manifests the principles of comprehensive site planning initiated by the Forest Service during the Depression, through spatial arrangement, functional organization, architectural unity from complimentary building materials and forms, and landscaping to integrate the building site and complex, and signifies an important advance in administrative site development.

GEOGRAPHICAL DATA:

Acreage: 8.77

UTM Reference:

<u>Point</u>	<u>Zone</u>	<u>Easting</u>	<u>Northing</u>
A	11	344065	4919991

VERBAL BOUNDARY DESCRIPTION:

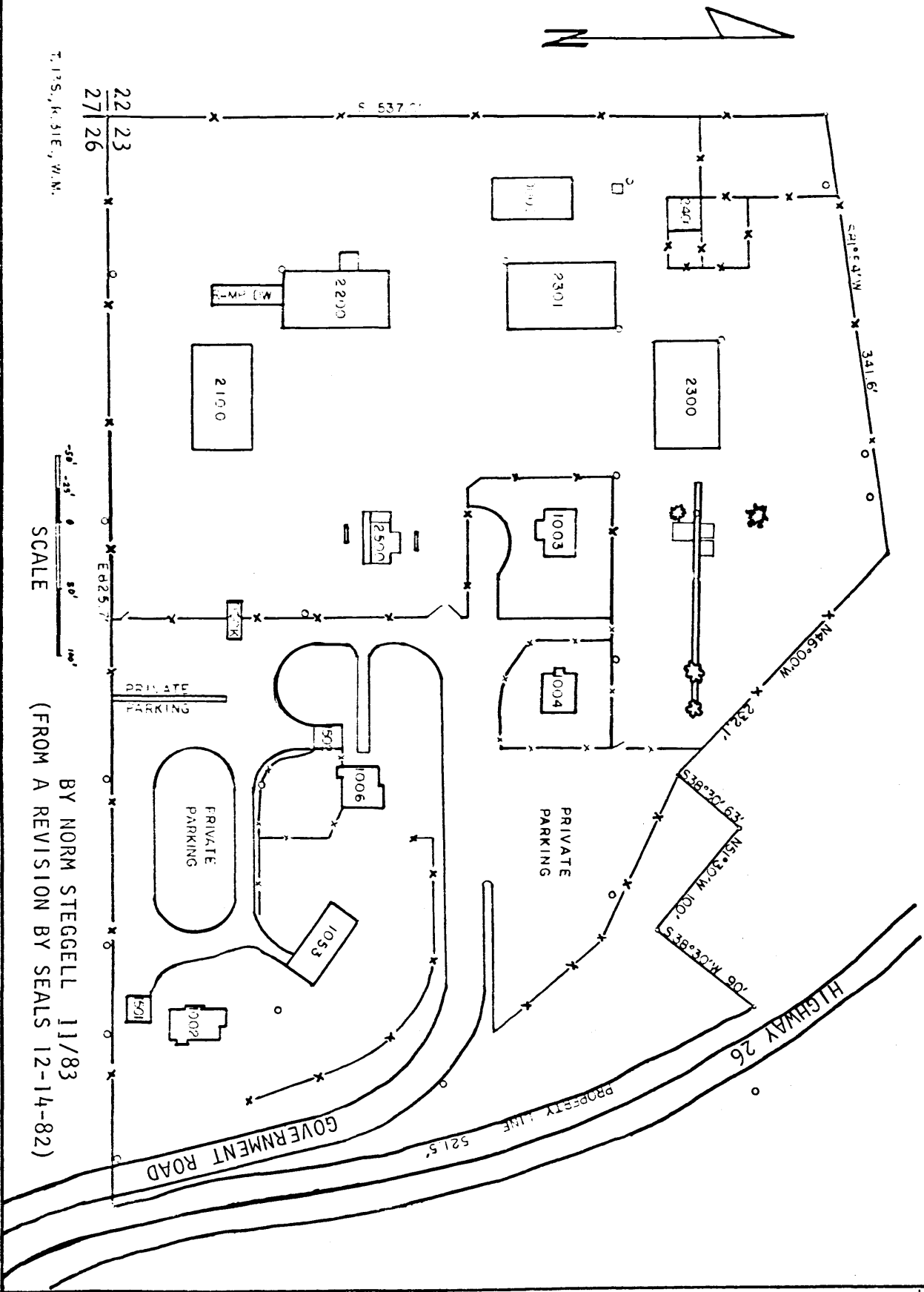
That portion of land lying within the SW 1/4 OF THE SW 1/4 of Section 23, T. 11S., R. 7E., Willamette Meridian in the County of Grant, State of Oregon, and 8.77 acres in size, herein described:

Commencing at the S.W. corner of Section 23 (common corner to Sections $\frac{22}{27} | \frac{23}{26}$)

T. 11S., R. 7E., Willamette Meridian, as monumented and described in the records of the Surveyor General, thence east 325.7 feet. Commencing from this point, the line parallels west of Highway 26 curvilinearly to a point N17°00'W 521.5 feet, thence S 38° 30' W 90 feet, thence N51° 30' W 100 feet, S. 38° 30' 63feet, thence N46° 00' W 232.1 feet, thence S81° 54' W 341.6 feet, thence S 537 feet to the point of beginning.

All of the west and south and approximately the western two thirds of the north perimeter fence line is 1 foot inside the property line. Other fences within the John Day Compound are not placed in relation to the property line.

MALHEUR NATIONAL FOREST
 JOHN DAY COMPOUND - GOVERNMENT HILL
 JOHN DAY, OREGON



LEGEND

BLDG.	DESCRIPTION
-------	-------------

- 1002 RESIDENCE
- 1003 RESIDENCE
- 1004 RESIDENCE
- 1006 RESIDENCE
- 1053 RESIDENCE
- 1501 GARAGE
- 1502 GARAGE
- 2100 WCF SHOP
- 2200 FIRE WRHSE.
- 2300 DIST. WRHSE
- 2301 OPEN STORAG
- 2400 BARN
- 2500 GAS HOUSE
- 0000 TREE COOLER

BY NORM STEGGELL 11/83
 (FROM A REVISION BY SEALS 12-14-82)

T. J. S., K. BIE, W. M.