



BISHOP SCHOOL

Waterbury, Connecticut

View: West elevation - looking  
southeast. Crown St. is at  
left - Bishop St. in fore-  
ground. 1886 addition is at  
far right - 1895 addition  
at far left.

Photo # 1 Date: 12/5/80

Neg. on file: Conn. Hist Comm.

PHOTOGRAPH TAKEN BY  
**CHRISTOPHER W. CLOSS**



BISHOP SCHOOL

Waterbury, Connecticut

View: Looking down Beacon St.  
with Bishop School on rt.  
1895 addition is in fore-  
ground with windows boar-  
ded in. Note neighborhood  
scale and atmosphere.

Photo # 2 Date: 12/5/80  
Neg. on file: Conn. Hist Comm.

PHOTOGRAPH TAKEN BY  
CHRISTOPHER W. CLOSS



BISHOP SCHOOL

Waterbury, Connecticut

View: Beacon St. facade - looking  
due west. 1886 addition is  
wing at far left - 1895 ad-  
dition is block at far right

Photo # **3** Date: 12/5/80  
Neg. on file: Conn. Hist. Comm.

PHOTOGRAPH TAKEN BY  
CHRISTOPHER W. CLOSS



IRON  
COLD BLOODED  
ROCK

ROBERT

MARK #1

DERRICK

MARK #2

MARK #3

BISHOP SCHOOL

Waterbury, Connecticut

View: West facade looking SE.  
Note recessed arched entrance; details of wall gable; foundation.

Photo # 4 Date: 12/5/80

Neg. on file: Conn. Hist Comm.

PHOTOGRAPH TAKEN BY  
CHRISTOPHER W. CLOSS





BISHOP SCHOOL

Waterbury, Connecticut

View: Bracketed porch (one of a pair) at SE corner of building - 1886 addition.

Photo # 5 Date: 12/5/80

Neg. on file: Conn. Hist. Comm.

PHOTOGRAPH TAKEN BY  
CHRISTOPHER W. CLOSS



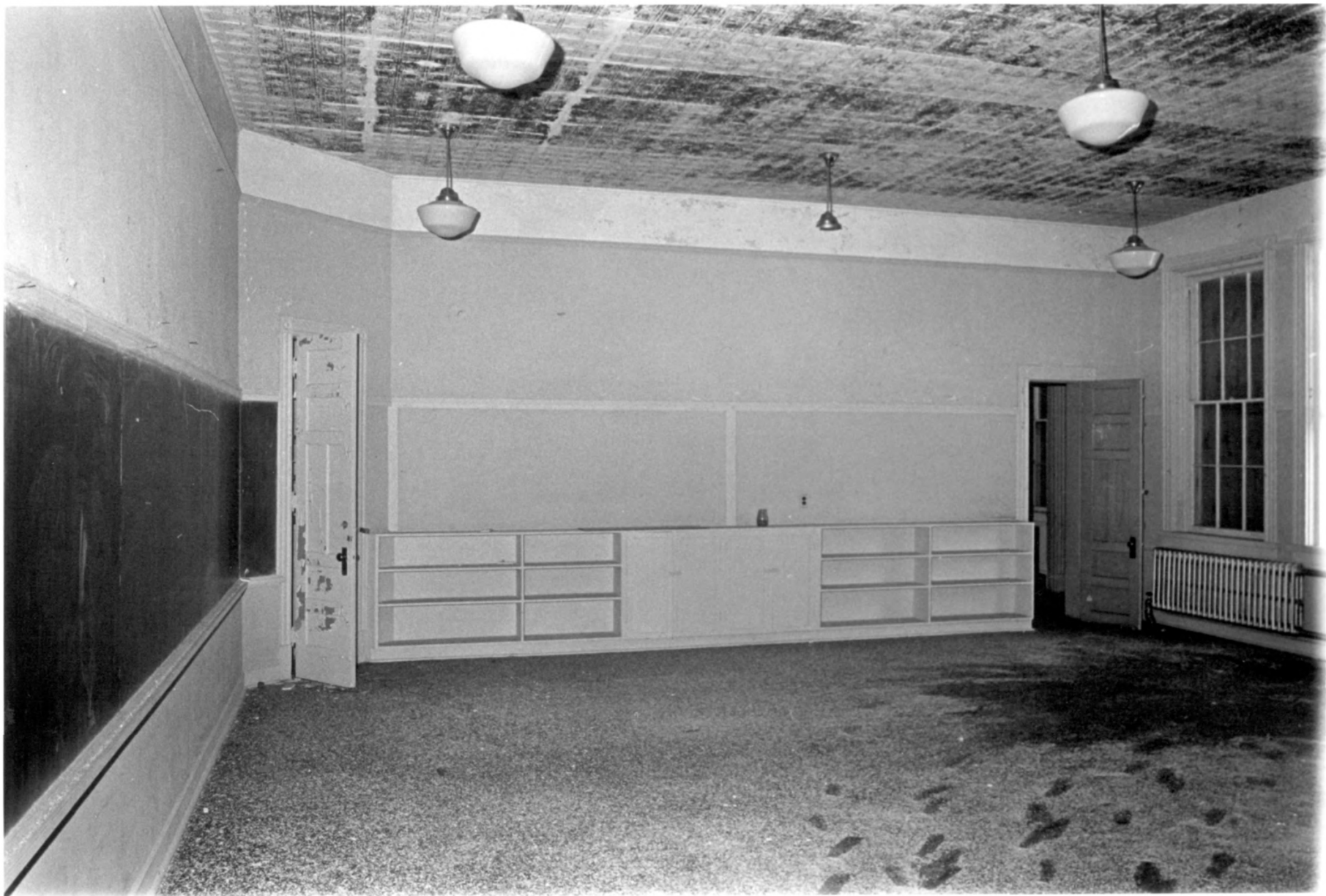
BISHOP SCHOOL

Waterbury, Connecticut

View: 3/4 view looking south of  
1895 addition. Note low  
hip roof; brownstone trim;  
sloping site and exposed  
foundation and water table.

Photo # 6 Date: 12/5/80

PHOTOGRAPH TAKEN BY  
CHRISTOPHER W. CLOSS



BISHOP SCHOOL

Waterbury, Connecticut

View: Typical interior of classroom in 1879 portion of building. Note six over six sash; cast iron wall radiators; metal ceiling.

Photo # 7 Date: 12/5/80  
Neg. on file: Conn. Hist. Comm.

PHOTOGRAPH TAKEN BY  
CHRISTOPHER W. CLOSS



BISHOP SCHOOL

Waterbury, Connecticut

View: Transverse hallway in  
1895 addition. Note tran-  
soms for light/ventilation  
and pressed metal ceiling.  
Three classrooms served by  
this corridor.

Photo # 8 Date: 12/5/80

Neg. on file: Conn. Hist. Comm.

PHOTOGRAPH TAKEN BY  
CHRISTOPHER W. CLOSS





BISHOP SCHOOL

9

Waterbury, Connecticut

View: Typical view of classroom in 1895 addition.  
Note: compound window moldings/corner blocks.  
Also tin ceiling; lighting.

Photo # 9 Date: 12/5/80

Neg. on file: Conn. Hist Comm.

PHOTOGRAPH TAKEN BY  
CHRISTOPHER W. CLOSS



BISHOP SCHOOL

Waterbury, Connecticut

View: Looking south in main  
corridor of original 1879  
structure. Typical on both  
floors. Note transoms; dec-  
orative metal ceiling.

Photo # 10 Date: 12/5/80

Neg. on file: Conn. Hist. Comm.

PHOTOGRAPH TAKEN BY  
CHRISTOPHER W. CLOSS



BISHOP SCHOOL

Waterbury, Connecticut

View: Fireplace at southern end  
of building in classroom  
(1886 addition). Note bo-  
lection molding and mantel;  
segmental arch in brick.

Photo # 11 Date: 12/5/80

Neg. on file: Conn. Hist Comm.

PHOTOGRAPH TAKEN BY  
CHRISTOPHER W. CLOSS



BISHOP SCHOOL

Waterbury, Connecticut

View: Stairway, turned newel post and screen of matched boards serving SE corner of original 1879 structure. Landing below opens onto bracketed porch.

Photo # 12 Date: 12/5/80  
Neg. on file: Conn. Hist Comm.

PHOTOGRAPH TAKEN BY  
CHRISTOPHER W. CLOSS





1257

BISHOP SCHOOL

Waterbury, Connecticut

View: W Elevation - looking E. This is an early view (only known historical photo) taken between 1906-1916. St. Thomas Church at extreme left rear.

Photo # 13 Date: c.1906-1916

Neg. on file: Mattatuck Museum  
Waterbury, CT

*Bishop School*

© MATTATUCK MUSEUM

*1982*

**THE MATTATUCK MUSEUM**  
**119 WEST MAIN STREET**  
**WATERBURY, CT. 06702**