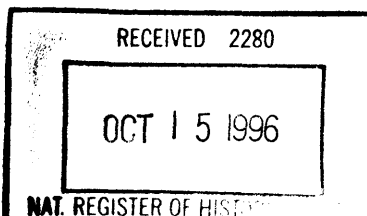


United States Department of the Interior  
National Park Service

NATIONAL REGISTER OF HISTORIC PLACES  
REGISTRATION FORM



This form is for use in nominating or requesting determinations for individual properties and NATIONAL REGISTER instructions in How to Complete the National Register of Historic Places Registration Form (National Register Bulletin 16A). Complete each item by marking "x" in the appropriate box or by entering the information requested. If any item does not apply to the property being documented, enter "N/A" for "not applicable." For functions, architectural classification, materials, and areas of significance, enter only categories and subcategories from the instructions. Place additional entries and narrative items on continuation sheets (NPS Form 10-900a). Use a typewriter, word processor, or computer, to complete all items.

1. Name of Property

historic name TILDEN, LUTHER F. HOUSE

other names/site number MEADOW MARSH - OR04917

2. Location

street & number 940 Tildenville School Road N/A  not for publication

city or town Winter Garden N/A  vicinity

state FLORIDA code FL county Orange code 095 zip code 32787

3. State/Federal Agency Certification

As the designated authority under the National Historic Preservation Act, as amended, I hereby certify that this  nomination  request for determination of eligibility meets the documentation standards for registering properties in the National Register of Historic Places and meets the procedural and professional requirements set forth in 36 CFR Part 60. In my opinion, the property  meets  does not meet the National Register criteria. I recommend that this property be considered significant  nationally  statewide  locally. ( See continuation sheet for additional comments.)

Suzanne P. Walker / Deputy SHPO 10/10/96  
Signature of certifying official/Title Date

Florida State Historic Preservation Officer, Florida Division of Historical Resources  
State or Federal agency and bureau

In my opinion, the property  meets  does not meet the National Register criteria. ( See continuation sheet for additional comments.)

\_\_\_\_\_  
Signature of certifying official/Title Date

\_\_\_\_\_  
State or Federal agency and bureau

4. National Park Service Certification

I hereby certify that the property is:

- entered in the National Register  See continuation sheet
- determined eligible for the National Register  See continuation sheet.
- determined not eligible for the National Register  See continuation sheet.
- removed from the National Register.
- other, (explain) \_\_\_\_\_

Edron H. Beall  
Signature of the Keeper

\_\_\_\_\_  
Date of Action  
11-15-96

LUTHER F. TILDEN HOUSE

ORANGE, FLORIDA

Name of Property

County and State

5. Classification

Ownership of Property  
(Check as many boxes as apply)

- private
- public-local
- public-State
- public-Federal

Category of Property  
(Check only one box)

- buildings
- district
- site
- structure
- object

Number of Resources within Property  
(Do not include any previously listed resources in the count)

Contributing	Noncontributing	
4	1	buildings
0	0	sites
0	1	structures
0	0	objects
4	2	total

Name of related multiple property listings  
(Enter "N/A" if property is not part of a multiple property listing.)

N/A

Number of contributing resources previously listed in the National Register

0

6. Function or Use

Historic Functions  
(Enter categories from instructions)

DOMESTIC/Single dwelling

Current Functions  
(Enter categories from instructions)

DOMESTIC/Hotel

7. Description

Architectural Classification  
(Enter categories from instructions)

LATE 19<sup>TH</sup> AND EARLY 20<sup>TH</sup> CENTURY REVIVALS/  
Classical Revival

Materials  
(Enter categories from instructions)

foundation BRICK  
walls WOOD: drop siding

roof METAL

other

Narrative Description

(Describe the historic and current condition of the property on one or more continuations sheets.)

**United States Department of the Interior  
National Park Service**

**NATIONAL REGISTER OF HISTORIC PLACES  
CONTINUATION SHEET**

Section number 7 Page 1

**Luther F. Tilden House,  
Winter Garden, Orange County, Florida**

---

**SUMMARY**

The Luther F. Tilden House, Winter Garden, Florida, is a two-and-one-half story, wood frame residence, constructed c.1878. The exterior of the building exhibits detailing associated with the Classical Revival architectural style together with features which are obvious adaptations of traditional wood frame construction to the warm climate of the state. The interior was designed originally as a single-family residence. The major alterations to the building—the additions of a wing housing a kitchen and bedroom and a wing housing a parlor and sleeping porch—occurred about 1900 and 1920 respectively.

**SETTING**

The Tilden House is located within a rural, twelve acre parcel which formerly included portions of the Tilden family citrus groves. The boundaries of the parcel are defined by several natural and man-made features. On the north of the property is the former Atlantic Coast Line Railroad right-of-way. On the east side is the Tildenville School Road, and on the west is Meadow Marsh, a dry lake. The boundary to the south is a survey line extending from the Tildenville School right-of-way to a point in the dry lake.

The setting includes the main house, three historic wood frame outbuildings, and a non-historic metal barn and pump house. Other features are historic wrought-iron fencing, which appears to date from the late nineteenth century, and mature stands of live oaks, palms, and other trees and plants (photographs 1-2).

**PRESENT PHYSICAL APPEARANCE**

**Exterior**

The Tilden House has an irregular shaped ground plan and massing. The irregular form and massing reflect three distinct phases in the development of the house. The original form and plan of the house resembled those of an I-house, a traditional vernacular dwelling common in Florida during the nineteenth century. The I-house was two rooms wide and one deep, frequently with smaller rooms or additions at the rear of the first floor. The Tilden House was originally constructed with two large rooms and two small rooms downstairs and two large rooms upstairs. Subsequent additions to the rear and south side transformed this simple vernacular house of a pioneer settler to the upper class residence of a prosperous citrus grower (photographs 3-7).

**United States Department of the Interior  
National Park Service**

**NATIONAL REGISTER OF HISTORIC PLACES  
CONTINUATION SHEET**

Section number 7 Page 2

**Luther F. Tilden House,  
Winter Garden, Orange County, Florida**

---

The roof is highly complex. The main roof is a gable type with multiple cross gables. The eaves are boxed. Dormers are located on the east and south slopes. The main porch is covered with a slightly pitched shed roof. The main roofs are surfaced with galvanized iron shingles. Pent roofs on the east and north elevations are surfaced with wood shingles. Two brick chimneys with corbelled caps break the roof plane on the east and west slopes (photographs 3-5).

The porch on the east elevation is the major exterior feature. It is supported by ionic columns on the first floor and square columns on the second. Between the columns are balustrades with turned balusters. The porch decks are sloped to drain rainwater away from the house (photograph 3).

The Tilden House rests on a raised, brick pier foundation with lattice infill, and its structural system is balloon frame. The exterior finish is wood, drop-siding. Doors and windows are numerous, and provide a system of cross ventilation. The windows are wooden, double-hung sash with 1/1 lights. Doors are wooden panel type, most with the original hardware intact. Operable wooden shutters are a common feature (photograph 8).

The historic outbuildings include two garages and a wooden storage shed. The design of the three outbuildings is well integrated with the main house through their method of construction and materials. All three buildings have wood frame structural systems and horizontal wood siding, either drop or weather board. All three roofs are covered with historic materials. The rear garage and the storage shed are covered with galvanized sheet metal in a V-crimp pattern. The roof of the front garage is covered with wood shingles (photographs 21-23).

**Interior**

The interior, designed as a private residence, was laid out with public spaces such as parlors on the first floor and private spaces such as bedrooms on the second. The west wing, the first addition to the building, contains a kitchen on the first floor and a bedroom above. The upper half story contains a full attic (photographs 9-20).

Interior detailing is extensive. Much of the detailing dates from the renovations designed c.1920 by Orlando architect F.H. Trimble. The floors were constructed of heart-pine boards. Baseboards, door and window trim, wainscoting, and other wood trim detail are found throughout the house. Doors contain operable transom lights to facilitate interior air circulation. There are five fireplaces, which further express the classically derived detailing of the exterior. The fireplaces in the front parlors are particularly detailed. They feature classically derived detailing, including ionic columns (photographs 9-11).

**United States Department of the Interior  
National Park Service**

**NATIONAL REGISTER OF HISTORIC PLACES  
CONTINUATION SHEET**

Section number 7 Page 3

**Luther F. Tilden House,  
Winter Garden, Orange County, Florida**

---

**Alterations**

The west wing is an early addition, constructed c.1900. Its materials, overall design, and individual features are nearly identical to the original portions of the building. The south wing, containing the parlor and sleeping porch, was added c.1920.

8. Statement of significance

Applicable National Register Criteria

(Mark "x" in one or more boxes for the criteria qualifying the property for National Register listing.)

- Property is associated with events that have made a significant contribution road patterns of our history.
Property is associated with the lives of persons significant in our past.
Property embodies the distinctive characteristics of a type, period, or method of construction...
Property has yielded, or is likely to yield information important in prehistory or history.

Criteria Considerations

(Mark "x" in all the boxes that apply.)

Property is:

- A owned by a religious institution or used for religious purposes.
B removed from its original location.
C a birthplace or grave.
D a cemetery.
E a reconstructed building, object, or structure.
F a commemorative property.
G less than 50 years of age or achieved significance within the past 50 years

Narrative Statement of Significance

(Explain the significance of the property on one or more continuation sheets.)

9. Major Bibliographical References

Bibliography

Cite the books, articles, and other sources used in preparing this form on one or more continuation sheets.)

Previous documentation on file (NPS):

- preliminary determination of individual listing (36 CFR 36) has been requested
previously listed in the National Register
previously determined eligible by the National Register
designated a National Historic Landmark
recorded by Historic American Buildings Survey
recorded by Historic American Engineering Record

Areas of Significance

(Enter categories from instructions)

- AGRICULTURE
ARCHITECTURE
EARLY SETTLEMENT

Period of Significance

c.1878 - 1929

Significant Dates

- c.1878
c.1900
c.1920

Significant Person

TILDEN, LUTHER F.

Cultural Affiliation

N/A

Architect/Builder

TRIMBLE, F.H.

Primary location of additional data:

- State Historic Preservation Office
Other State Agency
Federal agency
Local government
University
Other

Name of Repository

#

**United States Department of the Interior  
National Park Service**

**NATIONAL REGISTER OF HISTORIC PLACES  
CONTINUATION SHEET**

Section number 8 Page 1

**Luther F. Tilden House,  
Winter Garden, Orange County, Florida**

---

**SUMMARY**

The Luther F. Tilden House, Winter Garden, Florida, is being nominated for listing in the National Register of Historic Places under criteria A, B and C at the local level. It is significant under criteria A and B in the area of Agriculture and Early Settlement for its association with the central Florida citrus industry and Luther Fuller Tilden, a pioneer settler of southwest Orange County and an individual prominent in the development of the citrus industry of central Florida. The period of significance for the house corresponds to the year of construction c.1878 to the year of Luther F. Tilden's death, 1929. Also, it has architectural significance under criterion C. The original portion of the Tilden House was constructed c.1878. Its original portion and subsequent additions reflect the transformation of the building from a simple vernacular dwelling to an upper class residence embodying the Classical Revival style. The second addition was designed c.1920 by F.H. Trimble, one of the leading architects of central Florida during the early twentieth century.

**HISTORICAL CONTEXT**

The development of the citrus industry in Orange County closely paralleled that of Florida. Between 1876 and 1895, citrus cultivation and processing became a significant industry in Florida. Beginning in the 1880s, with the construction of railroads throughout central Florida, Orange County became a major participant in this development. Much of the production was concentrated in west Orange County, in communities such as Tildenville and Winter Garden, where rich soil around Lake Apopka supported the development of citrus groves. By 1889, Orange County ranked first among Florida's counties with nearly 20,000 acres of citrus groves.

The steady growth of Orange County continued through the first half of the 1890s, largely due to the strength of its burgeoning citrus industry. The "Great Freeze" of the winter of 1894 and 1895, however, brought development in this county to an abrupt halt. On December 29, 1894, a blast of unusually cold air swept into Florida, causing severe damage to groves as far south as Vero Beach. Affected trees were stripped of their leaves, but most survived. Following a period of warm weather, it appeared a good portion of the citrus crop would be saved. The hopes of local grove owners were dashed, however, when a second, much harder freeze occurred February 7. The state, which had shipped more than 5 million boxes of fruit in 1894, managed only 88,355 in 1895, and a meager 150,000 boxes the following year.

In the wake of the disaster, Orange County lost much of the momentum that had sustained growth during the previous fifteen years. The citrus industry would not recover until after the turn of the century. In Apopka, one of the leading citrus areas, only four boxes of citrus were shipped in 1896. The county had fewer than 3,000 fruit-bearing citrus trees in 1898. Orlando's emergence as a dominant regional commercial center, and the

**United States Department of the Interior  
National Park Service**

**NATIONAL REGISTER OF HISTORIC PLACES  
CONTINUATION SHEET**

Section number 8 Page 2

**Luther F. Tilden House,  
Winter Garden, Orange County, Florida**

---

reestablishment of the area's citrus industry was dependent on Orange County's recovery from the freeze. Many of the growers who remained in the county after the freeze replanted their groves immediately. By 1910, nearly 500,000 boxes of oranges were being shipped annually, making Orange County Florida's leading citrus producer. In response to the revitalized citrus market and to help regulate freight rates and sales of citrus, the Florida Citrus Exchange (FCE) was formed in 1909. Over the next several years, exchanges were established in many communities, including Apopka, Ocoee, Orlando, Tildenville, Windermere, and Winter Garden. Numerous independent packing houses sprang up in west Orange County. During the early twentieth century, the Roper family in Winter Garden, the Tildens in Tildenville, and Chase and Company in Windermere emerged as prominent citrus growers in central Florida. During the 1920s, citrus production in Florida expanded with the real estate boom. Production was greatest in DeSoto, Polk, and Orange counties. In Orange County, production levels pushed over one million boxes in 1920, accounting for fully one-quarter of the state's \$20 million orange crop that year.

The Settlement and Development of West Orange County, c.1850-1930

Winter Garden, a small community in west Orange County, was settled during the 1850s. The name of the community was derived in the early twentieth century, when the area became noted as an important citrus and vegetable growing region. Development in the late 19<sup>th</sup> century consisted of scattered farms and homesteads dotting the south shore of Lake Apopka. During the 1880s the construction of railroads into the area provided an impetus for settlement. In 1892, a post office opened, and in 1908 the residents of the fledgling community voted its incorporation. Two years later the population reached 351. Citrus cultivation and vegetable farming drove the local economy. Over the following decade, municipal services were provided, a newspaper, citrus grower's association, and board of trade were organized; and a commercial district emerged. By 1920, the local population reached 1,021.

During the 1920s, Winter Garden, like many Florida towns and cities, entered a period of unprecedented growth. A large hotel and business blocks were constructed in the downtown, and residential subdivisions were developed. The Florida Real Estate Boom peaked during the mid-1920s and collapsed around 1926. The collapse of the boom in Winter Garden was mitigated by the town's citrus based economy. Hurricanes and an infestation of the Mediterranean fruit fly in 1929, however, impacted the citrus industry and contributed to economic decline in communities throughout central Florida. The citrus industry and vegetable farming were revitalized during the 1930s.



**United States Department of the Interior  
National Park Service**

**NATIONAL REGISTER OF HISTORIC PLACES  
CONTINUATION SHEET**

Section number 8 Page 3

**Luther F. Tilden House,  
Winter Garden, Orange County, Florida**

---

**HISTORICAL SIGNIFICANCE**

The Tilden House is located in the small community of Tildenville, one mile west of Winter Garden in Orange County. Both the house and the community are named for Luther Fuller Tilden. Luther F. Tilden was born in 1834 in Cornwall, Vermont, but spent his childhood in New York state, where his father was a farmer. After his father's death in 1852, Tilden moved to Illinois. In 1859, he married Emily Aurora Willis. The Tildens had four children: Charles, Luther Willis, Matilda Minerva, and Clara. During the 1870s Tilden suffered from bronchitis. His doctor recommended that he relocate to a warmer climate. He moved to Florida in 1876 and spent two years in Apopka before purchasing land in the community that became Tildenville.

Tilden initially planted tomatoes, but soon focused on citrus cultivation. He was the first citrus grower in the area to construct packing houses for the proper processing and shipping of fruits and vegetables. He was instrumental in establishing the area's first schools and donated land for the construction of the Beulah Church, the Presbyterian Church in Oakland, and the Lakeview High School, which still stands on Tildenville School Road. He also served as a director of banks in Winter Garden and Orlando and was involved in real estate development in and around Winter Garden.

Tildenville became a center of the Orange County citrus industry in 1910, when the South Lake Apopka Citrus Growers Association Packing House was constructed at 1061 Tildenville School Road. The South Lake Apopka Exchange was organized by Luther W. Tilden, the son of Luther F. Tilden, and several other local citrus growers. L.W. Tilden was closely associated with the Florida Citrus Exchange, Florida's oldest and largest cooperative fruit packing and marketing association. The South Lake Apopka Exchange was part of the state exchange. It marketed citrus produced by the Tildens and other local growers through the "Fellowship," "South Lake," and "Good Will," brands.

Many citrus growers, including Luther F. Tilden, were relatively affluent northerners or mid-westerners. They came with the capital and the holding power to survive the five to seven years needed to bring a grove into production. The quality of the houses and other buildings in grove areas, particularly around South Lake Apopka, embody their relative affluence. Citrus was a cash crop with expanding national markets. It remained the principal agricultural pursuit in Orange County until the arrival of Disney World in the late 1960s. Luther F. Tilden died in 1929 at age 96. Having arrived in Florida at the age of 41, he had been one of the pioneers of the Orange County citrus industry and the settlement and development of West Orange County.

United States Department of the Interior  
National Park Service

**NATIONAL REGISTER OF HISTORIC PLACES  
CONTINUATION SHEET**

Section number 8 Page 4

**Luther F. Tilden House,  
Winter Garden, Orange County, Florida**

---

**ARCHITECTURAL CONTEXT AND SIGNIFICANCE**

Historic grove houses, such as the Tilden House, and outbuildings and structures associated with them are important property types and contribute to the understanding of the development of the citrus industry. They are significant for their association with the most prosperous agricultural activity in the state during the last one hundred years. Most have remained unaffected by urban development and are still in their rural settings, a factor contributing to their significance.

Grove houses in Orange County share a number of common features. They are at least two stories in height, with a balloon frame structural system constructed of pine. They are generally sited on large parcels of at least two acres with outbuildings and structures associated with citrus and other agricultural endeavors. They generally have an irregular ground plan, frequently with a kitchen wing, and irregular massing. They are mounted on masonry piers of brick construction. Horizontal weatherboard and drop siding are the most widely used exterior wall surface materials. Wood shingles and sheet metal were original roof surfacing materials. Porches are a common feature and include one- and two-story end porches or verandahs. Decorative features consist of ornamental woodwork, frequently jig-sawn. Such features include a variety of patterned shingles, turned porch columns and balustrade, and ornamental eaves and porch brackets.

The Luther F. Tilden House embodies many of the features associated with grove houses in Orange County. Tilden constructed his home at Tildenville about 1878. Tilden hired a carpenter from Apopka to construct the home. He used pine harvested from his holdings at Apopka. It was rafted across Lake Apopka and hand planed on the site. The original portion of the home had two large and two small rooms downstairs and two rooms upstairs. Later a kitchen, dining room and entry were added. Around the 1920s, this vernacular dwelling was embellished with Classical detailing on the interior and exterior.

F.H. Trimble, Architect

The south wing of the Tilden House and much of the interior detailing was designed by noted Orlando architect, F.H. Trimble, about 1920. Trimble practiced in the city from at least 1916–1925. Frederick Homer Trimble was born in 1878 at Essex, Ontario, Canada. He studied architecture at Morning Side College, Sioux City, Iowa. In 1904 he went to China, where he provided architectural service under the auspices of the Methodist Episcopal Church. He subsequently returned to Morning Side College and graduated in 1911. That same year he returned to China and served an additional three years as a missionary architect.

**United States Department of the Interior  
National Park Service**

**NATIONAL REGISTER OF HISTORIC PLACES  
CONTINUATION SHEET**

Section number     8     Page     5    

**Luther F. Tilden House,  
Winter Garden, Orange County, Florida**

---

In 1914 Trimble moved to Florida. He initially practiced at Fellsmere and moved to Orlando in 1916. From Orlando he developed a regional architectural practice. While designing a variety of types of buildings, Trimble was principally known as a school architect. He designed Fellsmere, Okeechobee, Lake Worth, Orlando, Stuart, Gulf, and Sebring high schools. He also designed buildings at Florida Southern College, Lakeland; the Montverde Industrial School; the Princess Martha Hotel, St. Petersburg; and numerous other public buildings and hotels.

In 1919 Trimble's office was located in the Neil-Davis Building. In Orlando he designed the Memorial High School, West Central, Callahan and Delaney elementary schools; the Methodist Episcopal Church; Amherst Apartments; Fort Gatlin Hotel; Orange General Hospital; and the city fire station at the northeast corner of Main Street and Central Avenue. He was also a leader among professional architects in Orlando. He organized the Architects Club of Orlando in July, 1924. The Fellsmere High School and Vero Theater are Trimble's only known commissions in Indian River County.

Neoclassical Style

The Neoclassical style evolved from a renewed interest in the architectural forms of the ancient Greeks and Romans. The revival of interest in classical models in the United States dates from the World's Colombian Exposition, held in Chicago in 1893. Many of the best known architects of the day designed buildings for the Exposition based on classical precedents. Examples were varied, and ranged from monumental copies of Greek temples to smaller models, which drew heavily from designs of Adam, Georgian, and Early Classical Revival residences. The exposition was well attended and publicized, and soon the Neoclassical style became the fashion.

In Florida, the Neoclassical style became the most popular style for commercial and government buildings, such as banks and courthouses. Its application to residential architecture is less common. Some of the characteristics of the style include a symmetrical facade dominated by a full height porch on classical columns, typically with Ionic or Corinthian capitals; gable or hip roofs with boxed eaves, frequently with dentils or modillions beneath the roof and a wide frieze band surrounding the building; doorways featuring decorative pediments; double-hung sash; and roof line balustrades. The Tilden House is a relatively rare example of the Neoclassical style both within the context of Orange County and Florida architecture.

United States Department of the Interior  
National Park Service

**NATIONAL REGISTER OF HISTORIC PLACES  
CONTINUATION SHEET**

Section number 9 Page 1

**Luther F. Tilden House,  
Winter Garden, Orange County, Florida**

---

**BIBLIOGRAPHY**

Bacon, Eve. *Oakland—The Early Years*. Chuluota, Florida, 1974.

*Orlando: A Centennial History*. Chuluota, Florida, 1977.

Blackman, William. *History of Orange County, Florida*. Orlando, Florida, 1927.

Cutler, Henry. *History of Florida, Past and Present*. 3 vols. Chicago, Illinois, 1923.

Dovell, Junius. *Florida: Historic, Dramatic, Contemporary*. 4 vols. New York, New York, 1952.

Historic Property Associates. "Historic Buildings Survey of Winter Garden." St. Augustine, Florida, 1994.

Hopkins, James. *Fifty Years of Citrus, The Florida Citrus Exchange: 1909–1959*. Gainesville, Florida, 1960.

Newspapers

*Orlando Morning Sentinel; Winter Garden Times*

Public Records

Orange County Courthouse

L.W. Tilden Probate, #6730, Clerk of the Courts, Probate Division, Orange County.

LUTHER F. TILDEN HOUSE  
Name of Property

ORANGE, FLORIDA  
County and State

10. Geographical Data

Acreage of Property 12 acres

UTM References

(Place additional references on a continuation sheet.)

1 | 1 | 7 |   | 4 | 4 | 0 | 2 | 2 | 0 |   | 3 | 1 | 5 | 9 | 1 | 0 | 0 |  
Zone Easting Northing  
2 | 1 | 7 |   | 4 | 4 | 0 | 3 | 8 | 0 |   | 3 | 1 | 5 | 9 | 1 | 0 | 0 |

3 | 1 | 7 |   | 4 | 4 | 0 | 3 | 8 | 0 |   | 3 | 1 | 5 | 8 | 8 | 6 | 0 |  
Zone Easting Northing  
4 | 1 | 7 |   | 4 | 4 | 0 | 2 | 2 | 0 |   | 3 | 1 | 5 | 8 | 8 | 6 | 0 |

See continuation sheet

Verbal Boundary Description

(Describe the boundaries of the property on a continuation sheet.)

Boundary Justification

(Explain why the boundaries were selected on a continuation sheet.)

11. Form Prepared By

name/title Paul L. Weaver, Consultant/ Gary V. Goodwin, Historic Preservation Planner

organization Bureau of Historic Preservation date October, 1996

street & number R.A. Gray Building, 500 S. Bronough Street telephone (904) 487-2333

city or town Tallahassee state Florida zip code 32399-0250

Additional Documentation

Submit the following items with the completed form:

Continuation Sheets

Maps

A USGS map (7.5 or 15 minute series) indicating the property's location.

A Sketch map for historic districts and properties having large acreage or numerous resources.

Photographs

Representative black and white photographs of the property.

Additional items

(check with the SHPO or FPO for any additional items)

Property Owner

(Complete this item at the request of SHPO or FPO.)

name Cavelle M. Pawlack

street & number Sleepy Hollow, 2500 Sliver Star Road telephone (407) 299-0250

city or town Orlando state Florida zip code 32804

**Paperwork Reduction Act Statement:** This information is being collected for applications to the National Register of Historic Places to nominate properties for listing or determine eligibility for listing, to list properties, and amend listings. Response to this request is required to obtain a benefit in accordance with the National Historic Preservation Act, as amended (16 U.S.C. 470 et seq.).

**Estimated Burden Statement:** Public reporting burden for this form is estimated to average 18.1 hours per response including time for reviewing instructions, gathering and maintaining data, and completing and reviewing the form. Direct comments regarding this burden estimate or any aspect of this form to the Chief, Administrative Services Division, National Park Service, P.O. Box 37127, Washington, DC 20013-7127; and the Office of Management and Budget, Paperwork Reductions Projects (1024-0018), Washington, DC 20503.

United States Department of the Interior  
National Park Service

# National Register of Historic Places Continuation Sheet

Section number 10 Page 1

**Luther F. Tilden House,  
Winter Garden, Orange County, Florida**

---

## **BOUNDARY DESCRIPTION**

The boundaries of the Luther F. Tilden House are those shown on the accompanying survey. They are roughly the "Rails to Trails" Public Trail on the north, Tildenville School Road on the east, and survey lines on the south and west.

## **BOUNDARY JUSTIFICATION**

The boundaries shown on the map enclose all historic resources associated with the Luther F. Tilden House as they developed during the period from c.1878 to approximately 1930.

United States Department of the Interior  
National Park Service

**National Register of Historic Places  
Continuation Sheet**

Section number PHOTOS Page 1

**Luther F. Tilden House,  
Winter Garden, Orange County, Florida**

---

**PHOTOGRAPHIC INVENTORY**

1. Luther F. Tilden House
2. 940 Tildenville School Road, Winter Garden, Orange County, Florida
3. Paul Weaver
4. November, 1995
5. Luther F. Tilden House, 940 Tildenville School Road
6. Cast iron fence, facing north
7. Photo No. 1 of 23

Items 1-5 are the same for remaining photographs.

6. East elevation, facing west
7. Photo No. 2 of 23

6. North/East elevations, facing southwest
7. Photo No. 3 of 23

6. Detail of east elevation including sleeping porch, facing north
7. Photo No. 4 of 23

6. South elevation, facing north
7. Photo No. 5 of 23

6. South elevation showing sleeping porch, facing north
7. Photo No. 6 of 23

6. North/West elevations, facing east
7. Photo No. 7 of 23

6. Bay, north elevation, facing east
7. Photo No. 8 of 23

6. Main stair, facing south
7. Photo No. 9 of 23

**United States Department of the Interior  
National Park Service**

**National Register of Historic Places  
Continuation Sheet**

Section number PHOTO Page 2

**Luther F. Tilden House,  
Winter Garden, Orange County, Florida**

---

- 6. Main entrance, facing east
- 7. Photo No. 10 of 23
  
- 6. Entrance parlor: mantle and fireplace, facing north
- 7. Photo No. 11 of 23
  
- 6. Living room, facing south
- 7. Photo No. 12 of 23
  
- 6. North parlor, facing north
- 7. Photo No. 13 of 23
  
- 6. Dining room, facing east
- 7. Photo No. 14 of 23
  
- 6. Kitchen, facing west
- 7. Photo No. 15 of 23
  
- 6. Stair: second floor, facing west
- 7. Photo No. 16 of 23
  
- 6. Stair: second floor leading to attic, facing south
- 7. Photo No. 17 of 23
  
- 6. Sleeping porch, facing south
- 7. Photo No. 18 of 23
  
- 6. Upstairs bedroom, showing transom light, facing west
- 7. Photo No. 19 of 23
  
- 6. Attic, facing south
- 7. Photo No. 20 of 23
  
- 6. Outbuilding, facing east
- 7. Photo No. 21 of 23



United States Department of the Interior  
National Park Service

# National Register of Historic Places Continuation Sheet

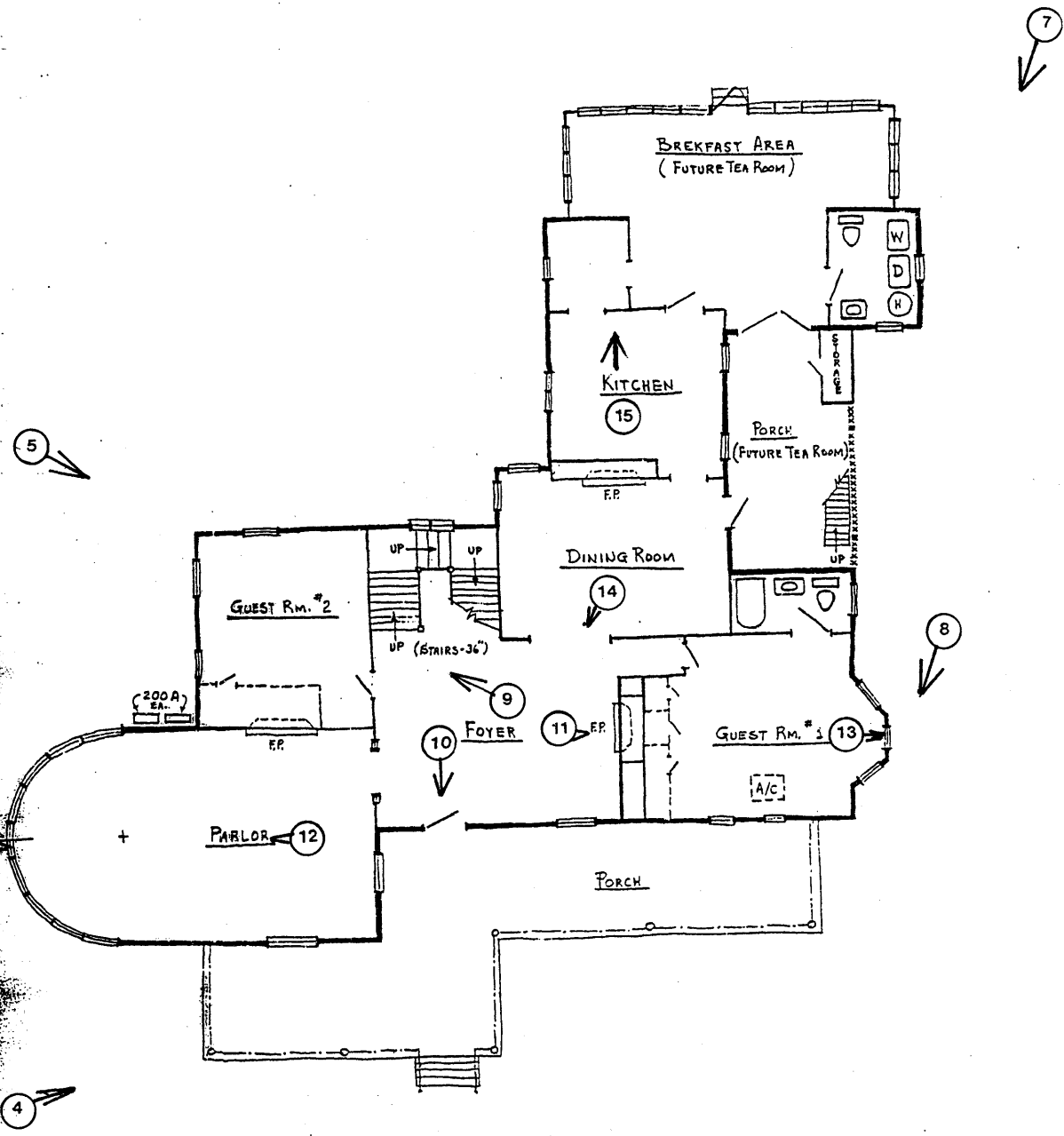
Section number PHOTO Page 3

**Luther F. Tilden House,  
Winter Garden, Orange County, Florida**

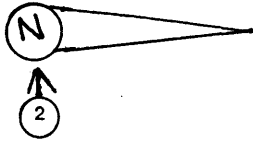
---

- 6. Outbuilding, facing west
- 7. Photo No. 22 of 23
  
- 6. Garage, facing south
- 7. Photo No. 23 of 23

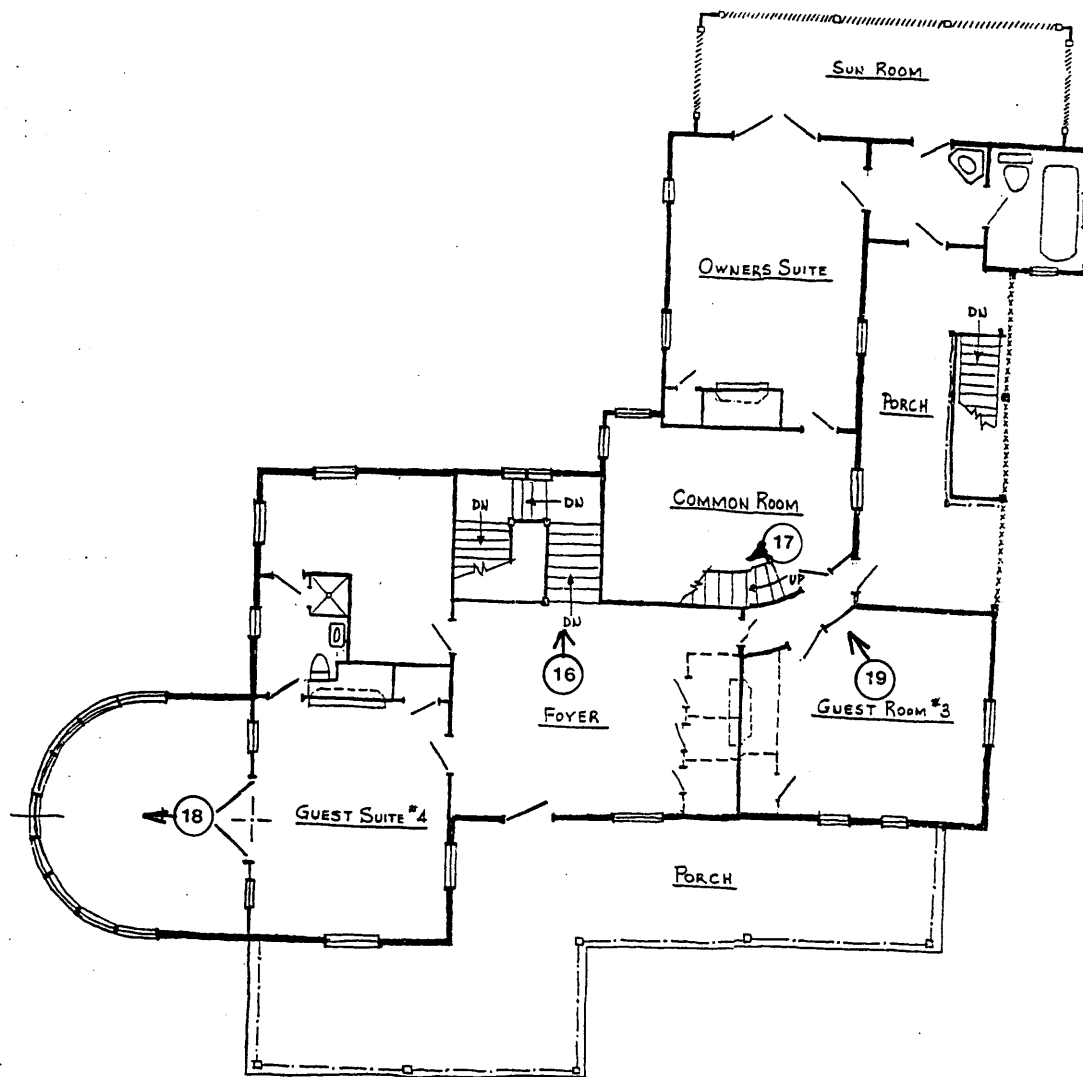
LUTHER F. TILDEN HOUSE  
940 Tildenville School Road  
Winter Garden, Orange County, Florida



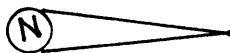
~ FIRST FLOOR PLAN ~  
(SCALE: 3/16" = 1'-0")



LUTHER F. TILDEN HOUSE  
940 Tildenville School Road  
Winter Garden, Orange County, Florida

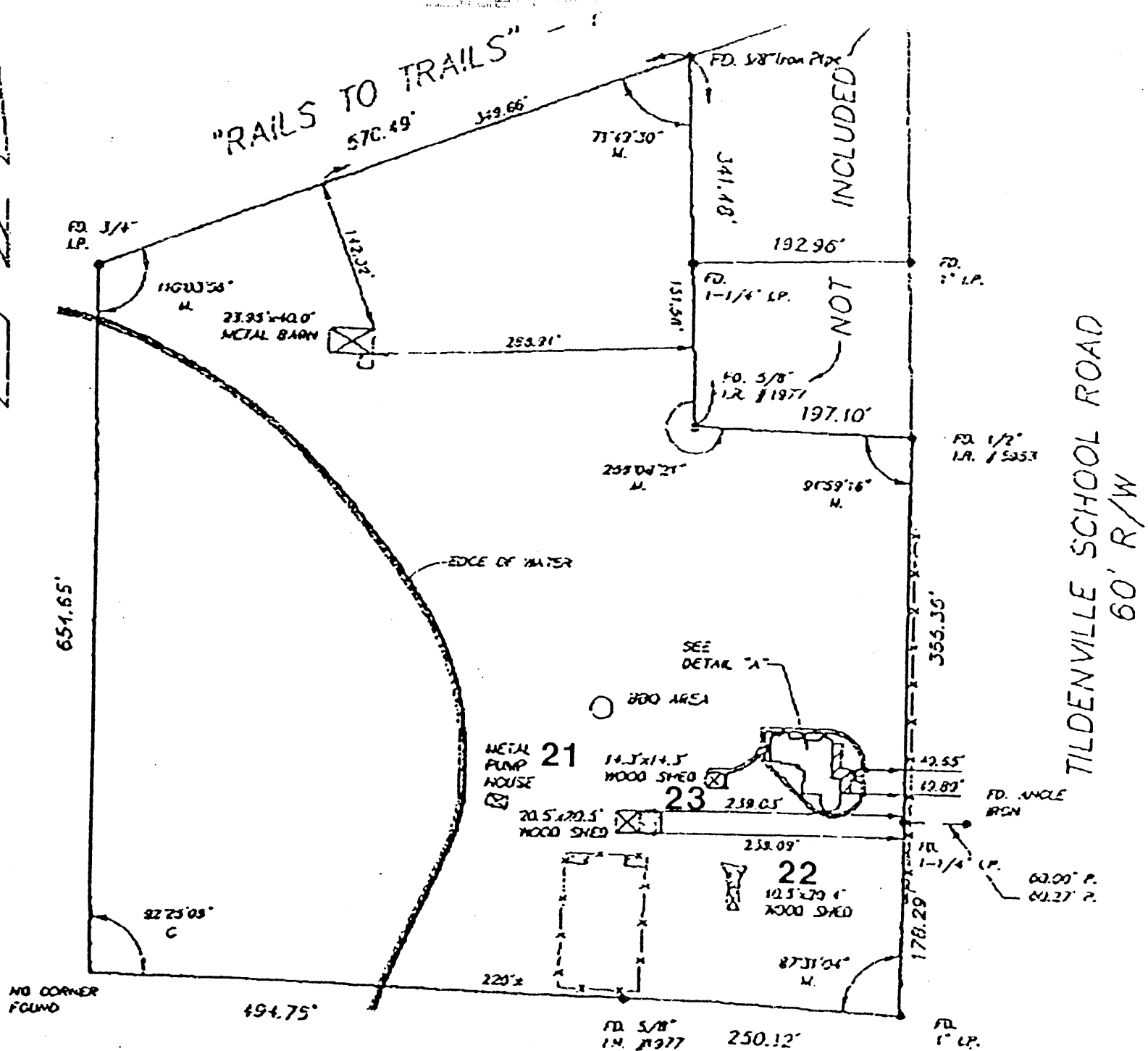


~ SECOND FLOOR PLAN ~  
(SCALE:  $\frac{3}{16}'' = 1'-0''$ )



LUTHER F. TILDEN HOUSE  
 Winter Garden, Orange County, Florida

1" = 750'



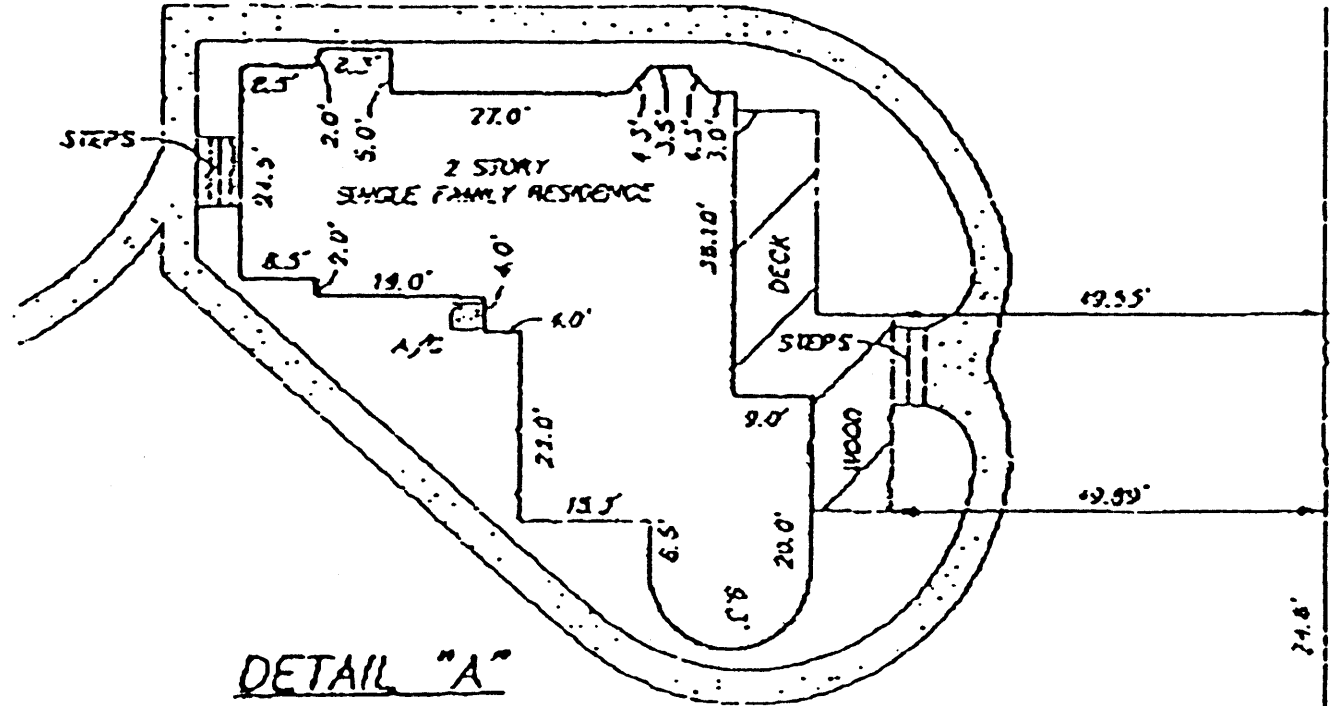
NO CORNER FOUND

INCLUDED

NOT

TILDENVILLE SCHOOL ROAD  
 60' R/W

LUTHER E. TILDEN HOUSE  
Winter Garden, Orange County, Florida



DETAIL "A"

SCALE 1" = 20'

**LEGEND**

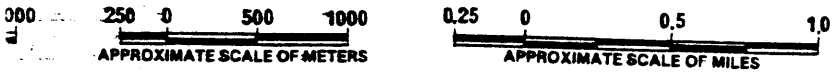
- INTERSTATE HIGHWAY
- TOLL ROAD
- U.S. HIGHWAY
- STATE HIGHWAY
- COUNTY HIGHWAY
- COUNTY LINE
- CITY LIMIT
- ZIP CODE
- QUADRANT BOUNDARY
- REALTORS REFERENCE NUMBER

---

  
**32811**  


---

  
**CM 2**



**Lake Apopka**  
 AM 5      AL 5  
 T 21 S      T 22 S  
 AM 4      AL 4  
 Crown Pt. 2

**OAKLAND**  
 W.B. "BILL" MCGEE HWY.

**WINTER GARDEN**

32760      32787

53      54      55

20      21      22      23      24      25

AP 1      AO 1      AN 1      AM 1      AL 1

AP 2      AO 2      AN 2      AM 2      AL 2

AP 3      AO 3      AN 3      AM 3      AL 3

AP 4      AO 4      AN 4      AM 4      AL 4

AP 5      AO 5      AN 5      AM 5      AL 5

AP 6      AO 6      AN 6      AM 6      AL 6

AP 7      AO 7      AN 7      AM 7      AL 7

AP 8      AO 8      AN 8      AM 8      AL 8

AP 9      AO 9      AN 9      AM 9      AL 9

AP 10      AO 10      AN 10      AM 10      AL 10

AP 11      AO 11      AN 11      AM 11      AL 11

AP 12      AO 12      AN 12      AM 12      AL 12

AP 13      AO 13      AN 13      AM 13      AL 13

AP 14      AO 14      AN 14      AM 14      AL 14

AP 15      AO 15      AN 15      AM 15      AL 15

AP 16      AO 16      AN 16      AM 16      AL 16

AP 17      AO 17      AN 17      AM 17      AL 17

AP 18      AO 18      AN 18      AM 18      AL 18

AP 19      AO 19      AN 19      AM 19      AL 19

AP 20      AO 20      AN 20      AM 20      AL 20

AP 21      AO 21      AN 21      AM 21      AL 21

AP 22      AO 22      AN 22      AM 22      AL 22

AP 23      AO 23      AN 23      AM 23      AL 23

AP 24      AO 24      AN 24      AM 24      AL 24

AP 25      AO 25      AN 25      AM 25      AL 25

AP 26      AO 26      AN 26      AM 26      AL 26

AP 27      AO 27      AN 27      AM 27      AL 27

AP 28      AO 28      AN 28      AM 28      AL 28

AP 29      AO 29      AN 29      AM 29      AL 29

AP 30      AO 30      AN 30      AM 30      AL 30

AP 31      AO 31      AN 31      AM 31      AL 31

AP 32      AO 32      AN 32      AM 32      AL 32

AP 33      AO 33      AN 33      AM 33      AL 33

AP 34      AO 34      AN 34      AM 34      AL 34

AP 35      AO 35      AN 35      AM 35      AL 35

AP 36      AO 36      AN 36      AM 36      AL 36

AP 37      AO 37      AN 37      AM 37      AL 37

AP 38      AO 38      AN 38      AM 38      AL 38

AP 39      AO 39      AN 39      AM 39      AL 39

AP 40      AO 40      AN 40      AM 40      AL 40

AP 41      AO 41      AN 41      AM 41      AL 41

AP 42      AO 42      AN 42      AM 42      AL 42

AP 43      AO 43      AN 43      AM 43      AL 43

AP 44      AO 44      AN 44      AM 44      AL 44

AP 45      AO 45      AN 45      AM 45      AL 45

AP 46      AO 46      AN 46      AM 46      AL 46

AP 47      AO 47      AN 47      AM 47      AL 47

AP 48      AO 48      AN 48      AM 48      AL 48

AP 49      AO 49      AN 49      AM 49      AL 49

AP 50      AO 50      AN 50      AM 50      AL 50

AP 51      AO 51      AN 51      AM 51      AL 51

AP 52      AO 52      AN 52      AM 52      AL 52

AP 53      AO 53      AN 53      AM 53      AL 53

AP 54      AO 54      AN 54      AM 54      AL 54

AP 55      AO 55      AN 55      AM 55      AL 55

AP 56      AO 56      AN 56      AM 56      AL 56

AP 57      AO 57      AN 57      AM 57      AL 57

AP 58      AO 58      AN 58      AM 58      AL 58

AP 59      AO 59      AN 59      AM 59      AL 59

AP 60      AO 60      AN 60      AM 60      AL 60

AP 61      AO 61      AN 61      AM 61      AL 61

AP 62      AO 62      AN 62      AM 62      AL 62

AP 63      AO 63      AN 63      AM 63      AL 63

AP 64      AO 64      AN 64      AM 64      AL 64

AP 65      AO 65      AN 65      AM 65      AL 65

AP 66      AO 66      AN 66      AM 66      AL 66

AP 67      AO 67      AN 67      AM 67      AL 67

AP 68      AO 68      AN 68      AM 68      AL 68

AP 69      AO 69      AN 69      AM 69      AL 69

AP 70      AO 70      AN 70      AM 70      AL 70

AP 71      AO 71      AN 71      AM 71      AL 71

AP 72      AO 72      AN 72      AM 72      AL 72

AP 73      AO 73      AN 73      AM 73      AL 73

AP 74      AO 74      AN 74      AM 74      AL 74

AP 75      AO 75      AN 75      AM 75      AL 75

AP 76      AO 76      AN 76      AM 76      AL 76

AP 77      AO 77      AN 77      AM 77      AL 77

AP 78      AO 78      AN 78      AM 78      AL 78

AP 79      AO 79      AN 79      AM 79      AL 79

AP 80      AO 80      AN 80      AM 80      AL 80

AP 81      AO 81      AN 81      AM 81      AL 81

AP 82      AO 82      AN 82      AM 82      AL 82

AP 83      AO 83      AN 83      AM 83      AL 83

AP 84      AO 84      AN 84      AM 84      AL 84

AP 85      AO 85      AN 85      AM 85      AL 85

AP 86      AO 86      AN 86      AM 86      AL 86

AP 87      AO 87      AN 87      AM 87      AL 87

AP 88      AO 88      AN 88      AM 88      AL 88

AP 89      AO 89      AN 89      AM 89      AL 89

AP 90      AO 90      AN 90      AM 90      AL 90

AP 91      AO 91      AN 91      AM 91      AL 91

AP 92      AO 92      AN 92      AM 92      AL 92

AP 93      AO 93      AN 93      AM 93      AL 93

AP 94      AO 94      AN 94      AM 94      AL 94

AP 95      AO 95      AN 95      AM 95      AL 95

AP 96      AO 96      AN 96      AM 96      AL 96

AP 97      AO 97      AN 97      AM 97      AL 97

AP 98      AO 98      AN 98      AM 98      AL 98

AP 99      AO 99      AN 99      AM 99      AL 99

AP 100      AO 100      AN 100      AM 100      AL 100

**Johns Lake**  
 Turkey Island  
 Black Lake  
 Lake Beulah  
 Lake Cross

29      28      27      26      25      24      23      22      21      20

CP 1      CO 1      CN 1      CM 1      CL 1

CP 2      CO 2      CN 2      CM 2      CL 2

CP 3      CO 3      CN 3      CM 3      CL 3

CP 4      CO 4      CN 4      CM 4      CL 4

CP 5      CO 5      CN 5      CM 5      CL 5

CP 6      CO 6      CN 6      CM 6      CL 6

CP 7      CO 7      CN 7      CM 7      CL 7

CP 8      CO 8      CN 8      CM 8      CL 8

CP 9      CO 9      CN 9      CM 9      CL 9

CP 10      CO 10      CN 10      CM 10      CL 10

CP 11      CO 11      CN 11      CM 11      CL 11

CP 12      CO 12      CN 12      CM 12      CL 12

CP 13      CO 13      CN 13      CM 13      CL 13

CP 14      CO 14      CN 14      CM 14      CL 14

CP 15      CO 15      CN 15      CM 15      CL 15

CP 16      CO 16      CN 16      CM 16      CL 16

CP 17      CO 17      CN 17      CM 17      CL 17

CP 18      CO 18      CN 18      CM 18      CL 18

CP 19      CO 19      CN 19      CM 19      CL 19

CP 20      CO 20      CN 20      CM 20      CL 20

CP 21      CO 21      CN 21      CM 21      CL 21

CP 22      CO 22      CN 22      CM 22      CL 22

CP 23      CO 23      CN 23      CM 23      CL 23

CP 24      CO 24      CN 24      CM 24      CL 24

CP 25      CO 25      CN 25      CM 25      CL 25

CP 26      CO 26      CN 26      CM 26      CL 26

CP 27      CO 27      CN 27      CM 27      CL 27

CP 28      CO 28      CN 28      CM 28      CL 28

CP 29      CO 29      CN 29      CM 29      CL 29

CP 30      CO 30      CN 30      CM 30      CL 30

CP 31      CO 31      CN 31      CM 31      CL 31

CP 32      CO 32      CN 32      CM 32      CL 32

CP 33      CO 33      CN 33      CM 33      CL 33

CP 34      CO 34      CN 34      CM 34      CL 34

CP 35      CO 35      CN 35      CM 35      CL 35

CP 36      CO 36      CN 36      CM 36      CL 36

CP 37      CO 37      CN 37      CM 37      CL 37

CP 38      CO 38      CN 38      CM 38      CL 38

CP 39      CO 39      CN 39      CM 39      CL 39

CP 40      CO 40      CN 40      CM 40      CL 40

CP 41      CO 41      CN 41      CM 41      CL 41

CP 42      CO 42      CN 42      CM 42      CL 42

CP 43      CO 43      CN 43      CM 43      CL 43

CP 44      CO 44      CN 44      CM 44      CL 44

CP 45      CO 45      CN 45      CM 45      CL 45

CP 46      CO 46      CN 46      CM 46      CL 46

CP 47      CO 47      CN 47      CM 47      CL 47

CP 48      CO 48      CN 48      CM 48      CL 48

CP 49      CO 49      CN 49      CM 49      CL 49

CP 50      CO 50      CN 50      CM 50      CL 50

CP 51      CO 51      CN 51      CM 51      CL 51

CP 52      CO 52      CN 52      CM 52      CL 52

CP 53      CO 53      CN 53      CM 53      CL 53

CP 54      CO 54      CN 54      CM 54      CL 54

CP 55      CO 55      CN 55      CM 55      CL 55

CP 56      CO 56      CN 56      CM 56      CL 56

CP 57      CO 57      CN 57      CM 57      CL 57

CP 58      CO 58      CN 58      CM 58      CL 58

CP 59      CO 59      CN 59      CM 59      CL 59

CP 60      CO 60      CN 60      CM 60      CL 60

CP 61      CO 61      CN 61      CM 61      CL 61

CP 62      CO 62      CN 62      CM 62      CL 62

CP 63      CO 63      CN 63      CM 63      CL 63

CP 64      CO 64      CN 64      CM 64      CL 64

CP 65      CO 65      CN 65      CM 65      CL 65

CP 66      CO 66      CN 66      CM 66      CL 66

CP 67      CO 67      CN 67      CM 67      CL 67

CP 68      CO 68      CN 68      CM 68      CL 68

CP 69      CO 69      CN 69      CM 69      CL 69

CP 70      CO 70      CN 70      CM 70      CL 70

CP 71      CO 71      CN 71      CM 71      CL 71

CP 72      CO 72      CN 72      CM 72      CL 72

CP 73      CO 73      CN 73      CM 73      CL 73

CP 74      CO 74      CN 74      CM 74      CL 74

CP 75      CO 75      CN 75      CM 75      CL 75

CP 76      CO 76      CN 76      CM 76      CL 76

CP 77      CO 77      CN 77      CM 77      CL 77

CP 78      CO 78      CN 78      CM 78      CL 78

CP 79      CO 79      CN 79      CM 79      CL 79

CP 80      CO 80      CN 80      CM 80      CL 80

CP 81      CO 81      CN 81      CM 81      CL 81

CP 82      CO 82      CN 82      CM 82      CL 82

CP 83      CO 83      CN 83      CM 83      CL 83

CP 84      CO 84      CN 84      CM 84      CL 84

CP 85      CO 85      CN 85      CM 85      CL 85

CP 86      CO 86      CN 86      CM 86      CL 86

CP 87      CO 87      CN 87      CM 87      CL 87

CP 88      CO 88      CN 88      CM 88      CL 88

CP 89      CO 89      CN 89      CM 89      CL 89

CP 90      CO 90      CN 90      CM 90      CL 90

CP 91      CO 91      CN 91      CM 91      CL 91

CP 92      CO 92      CN 92      CM 92      CL 92

CP 93      CO 93      CN 93      CM 93      CL 93

CP 94      CO 94      CN 94      CM 94      CL 94

CP 95      CO 95      CN 95      CM 95      CL 95

CP 96      CO 96      CN 96      CM 96      CL 96

CP 97      CO 97      CN 97      CM 97      CL 97

CP 98      CO 98      CN 98      CM 98      CL 98

CP 99      CO 99      CN 99      CM 99      CL 99

CP 100      CO 100      CN 100      CM 100      CL 100