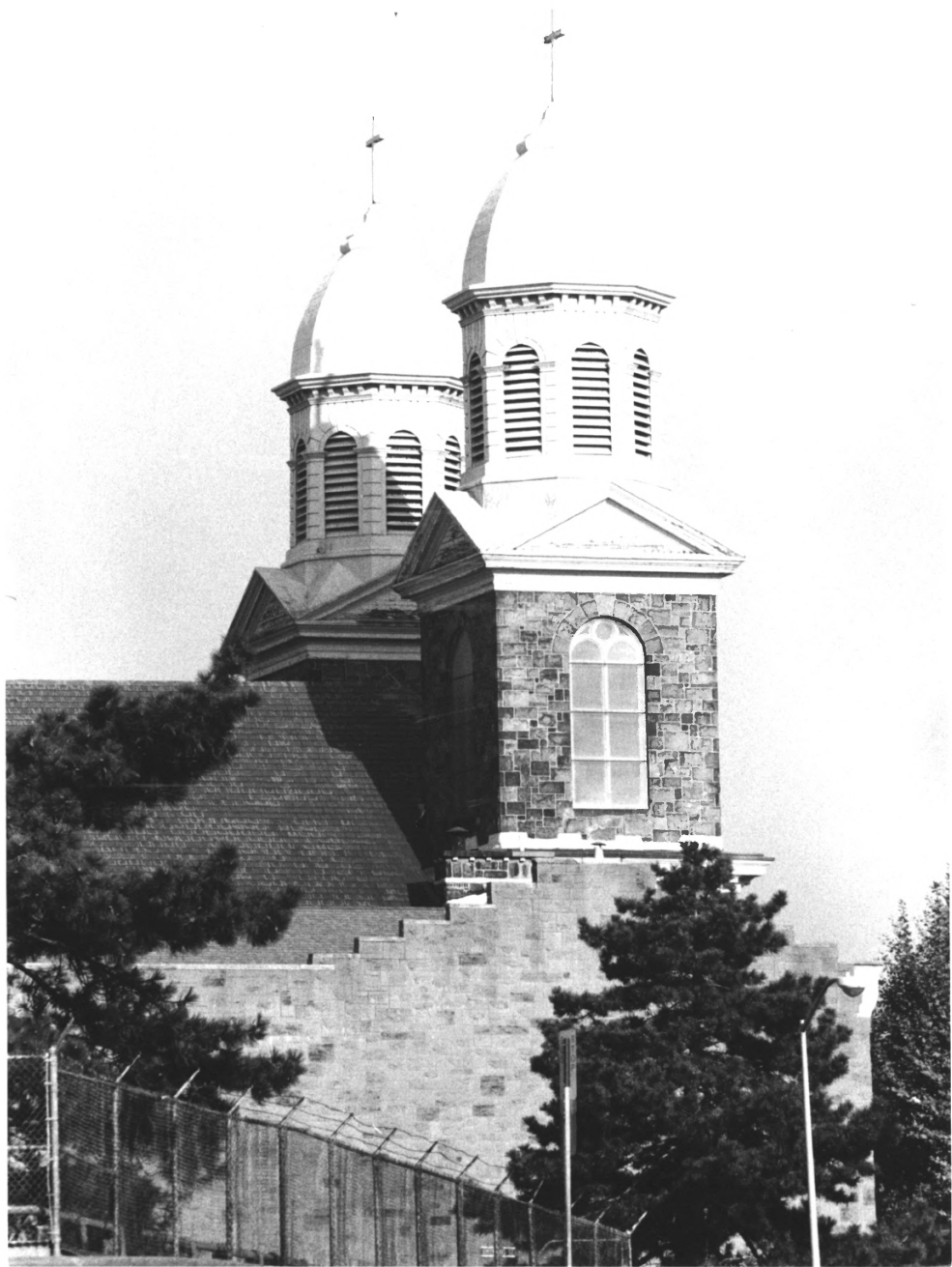




1. 5-11-12
2. 5-11-12
3. 5-11-12



2. *Spizella monticola*, *Melospiza monticola*, *Melospiza monticola*.



3. 5. 2. 1. 2. 3. 4. 5. 6. 7. 8. 9. 10. 11. 12. 13. 14. 15. 16. 17. 18. 19. 20. 21. 22. 23. 24. 25. 26. 27. 28. 29. 30. 31. 32. 33. 34. 35. 36. 37. 38. 39. 40. 41. 42. 43. 44. 45. 46. 47. 48. 49. 50. 51. 52. 53. 54. 55. 56. 57. 58. 59. 60. 61. 62. 63. 64. 65. 66. 67. 68. 69. 70. 71. 72. 73. 74. 75. 76. 77. 78. 79. 80. 81. 82. 83. 84. 85. 86. 87. 88. 89. 90. 91. 92. 93. 94. 95. 96. 97. 98. 99. 100.



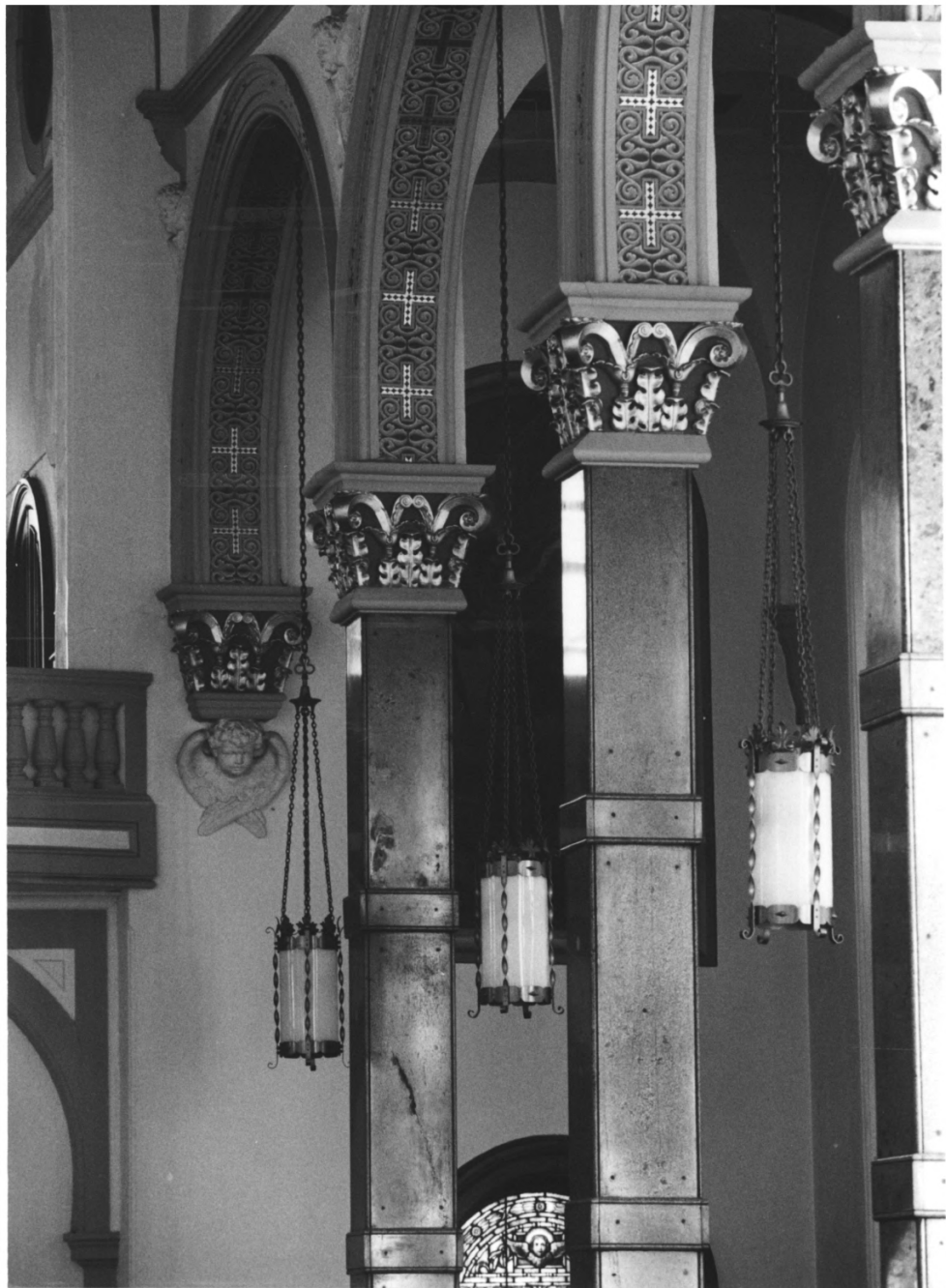
4. *Stropharia* *serotina* (Fr.) Berk. N.I.



5. *Sparganium angustifolium*, Michx. *Sparganium angustifolium*, Michx.



6. Start with the same country to



7. August 1951, München, N.J.



Б. С. Герасимов, М. С. Герасимов, М. С. Герасимов





10. 5. 1. 2. 3. 4. 5. 6. 7. 8. 9. 10. 11. 12. 13. 14. 15. 16. 17. 18. 19. 20. 21. 22. 23. 24. 25. 26. 27. 28. 29. 30. 31. 32. 33. 34. 35. 36. 37. 38. 39. 40. 41. 42. 43. 44. 45. 46. 47. 48. 49. 50. 51. 52. 53. 54. 55. 56. 57. 58. 59. 60. 61. 62. 63. 64. 65. 66. 67. 68. 69. 70. 71. 72. 73. 74. 75. 76. 77. 78. 79. 80. 81. 82. 83. 84. 85. 86. 87. 88. 89. 90. 91. 92. 93. 94. 95. 96. 97. 98. 99. 100.



11. 3rd Heart Check. 4th. 5th

A black and white photograph of a stone building's entrance. The building is constructed from large, rough-hewn stone blocks. A central entrance features a double door with glass panels, set within a stone archway. Above the arch is a decorative stone element with a circular opening. A small light fixture is mounted above the door. To the left of the entrance, a sign on a post reads "RECTORY & PARISH OFFICE". A chain-link fence is visible on the far left, and a metal railing is on the right. Two large planters with plants are positioned near the entrance steps.

RECTORY
&
PARISH
OFFICE

12. *Handwritten text, possibly a signature or name, written in cursive script.*



19. Sacred Heart Church, Meriden, CT



14. *Sparganium angustifolium*, Michx. *Sparganium angustifolium*, Nutt.



15. Second Hand Church. Merzbury, NJ



Managers of St. Charles
First Class

25 ROAD READY DRIVING SCHOOL 800-477-6877

BINGO

Evening - 7:30 PM
Saturday Afternoon - 12:30 PM
Over \$1,000 Total Prizes

The Officers of the Club

W. S. Hart, Jr.,
W. S. Hart, Jr.,
W. S. Hart, Jr.,
W. S. Hart, Jr.



17. Sacred Heart Church, Mercer County, NJ



St. Ann's Church

10. Spand Harach, Mand Gand, ND