



Hannah C. and Peter E. Thompson House
361 Second Street N.E., Barnesville
Clay Co., Mn
011574-0A/1

Hannah C. and Peter E. Thompson House

01574-0A/1

361 Second Street NE, Barnesville

Clay Co., MN

Photographer: Barbara Koosman, U.S. West Research Inc.,

March 1993

MN Historical Society, 345 Kellogg Blvd. W., St. Paul, MN 55102-1906

Looking S



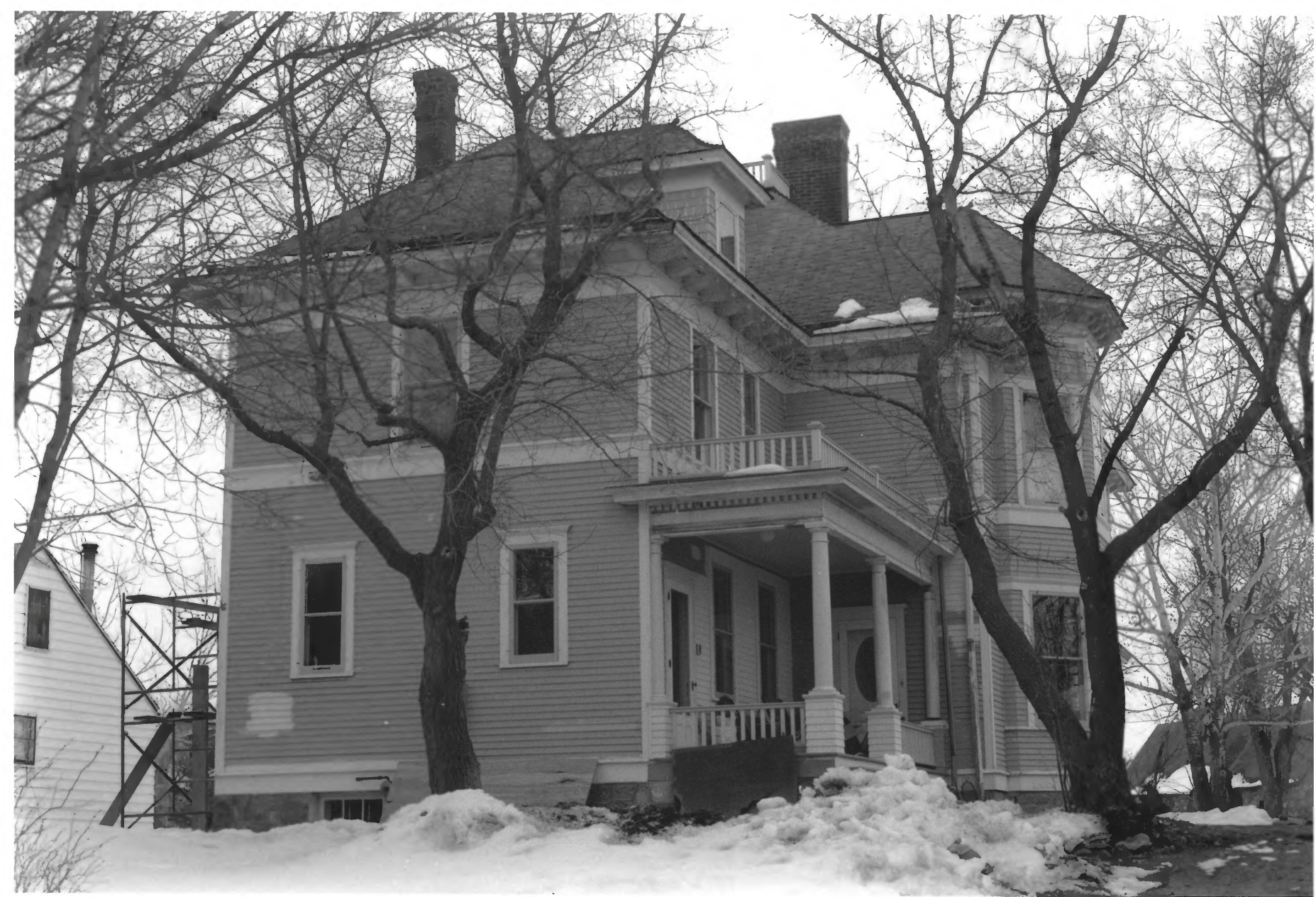
Hannah C. and Peter E. Thompson House
361 Second Street NE, Barnesville
Clay Co., MN
011874 - 2A/2

Hannah C. and Peter E. Thompson House
361 Second Street NE, Barnesville
Clay Co., MN

011574-1A/2

Photographer: Barbara Koosman, U.S. West Research Inc.
March 1993

MN Historical Society, 345 Kellogg Blvd. W., St. Paul, MN 55102-1906
Looking SE



Hannah C. and Peter E. Thompson House
361 Second Street NE, Barnesville
Clay Co, MN
011574-3A14

Hannah C. and Peter E. Thompson House
361 Second Street NE, Barnesville
Clay Co., Mn

O11574-3A/4

Photographer: Barbara Kuwiman, U.S. West Research Inc.

March 1993

Mn Historical Society, 345 Kellogg Blvd. W., St. Paul, Mn 55102-1906

Looking N/NW



Hannah C. and Peter E. Thompson House
361 Second Street NE, Barnesville
Clay Co., MN
011574 - 8A19

Hannah C. and Peter Thompson House
361 Second Street NE, Barnesville
Clay Co., Mn

011574-8A/9

Photographer: Barbara Kooiman, U.S. West Research Inc.
March 1993

Mn Historical Society, 345 Kellogg Blvd. W., St. Paul, Mn 55102-1906
Looking E