

Survey Branch, Rock Island District
U.S. Army Corps of Engineers,
Rock Island, IL.
11 Lime St., Dubuque, Dubuque County, IA.
Aerial photo of Lock and Dam No. 11
Continuation Sheet, Photo 1

Fr. 7-11

20 NOV 95

L/D No. 11



IA-23-3, HAER, IOWA, 31, DUBU, 11- HAER Collection, Prints
and Photograph Division, Library of Congress, Washington, D.C.

General View of Lock, downstream side

Lock and Dam No. 11 Historic District

11 Lime St.

Dubuque, Dubuque County, IA.

Peter A. Rathbun

September 1987

from downstream guide wall of lock, looking north

L & D No. 11 Historic District Continuation Sheet, Photo 2

HAER ILL, 98-FULT.V, 1-6

Reproduced from the
Collections of the
LIBRARY OF CONGRESS

889946



IA-23-2, HAER, IOWA, 31-DUBU, 11- HAER Collection, Prints and
Photograph Division, Library of Congress, Washington, DC,

General View of Dam, Downstream side
Lock and dam No. 11 Historic District
11 Lime St.

Dubuque, Dubuque County, IA.

Peter A. Rathbun

September 1987

from downstream guide wall of lock, looking northeast

LE D No. 11 Continuation Sheet, Photo 3



IA-23-21, HAER, IOWA, 31-DUBU, 11-HAER Collection, Prints and
Photograph Division, Library of Congress, Washington, DC.
Upstream Guide Wall Extensions, Deflecting Duke, and
Slough Impoundment
Lock and Dam No. 11 Historic District
11 Lime St,
Dubuque, Dubuque County, Iowa
Peter A. Rothbun
September 1987
from dam, looking northwest
L & D NO. 11 Continuation Sheet, Photo 4

HAER IOWA 31-DUBU, 11-50

Reproduced from the
Collections of the
LIBRARY OF CONGRESS

809946



UMR-NATIONAL REGISTER, roll #1, frame 1; Environmental Impact Section, Planning
Division, Rock Island District, U.S. Army Corps of Engineers,
Rock Island, IL.

Lean-to addition to Workshop
Lock and Dam No. 11 Historic District
11 Lime St.

Dubuque, Dubuque County, IA
~~Margaret~~ Rathbun

February 1998

from driveway, looking South

L & D No. 11 Historic District, photo 5
Continuation Sheet



IA-23-50-HAER, IOWA, 31-DUBU, 11-HAER Collection, Prints and
Photograph Division, Library of Congress, Washington, D.C.
Lock Chamber, Visitor Center, Scooter Shed, Central Control Station
Lock and Dam No. 11 Historic District
11 Lime St.

Dubuque, Dubuque County, Iowa

Peter A. Rothbun

September 1987

from intermediate wall, looking southwest

L&D No. 11 Historic District Continuation Sheet, photo 6

HAER IOWA 31-DUBU 11-21

Reproduced from the
Collections of the
LIBRARY OF CONGRESS

9046



UMR-NATIONAL REGISTER, 1011 #5, frame 26, Environmental Impact
Section, Planning Division, Rock Island District, U.S. Army
Corps of Engineers, Rock Island, IL.

Upstream Land Wall Control Stand Shelter
Lock and Dam No 11 Historic District
11 Lime St.

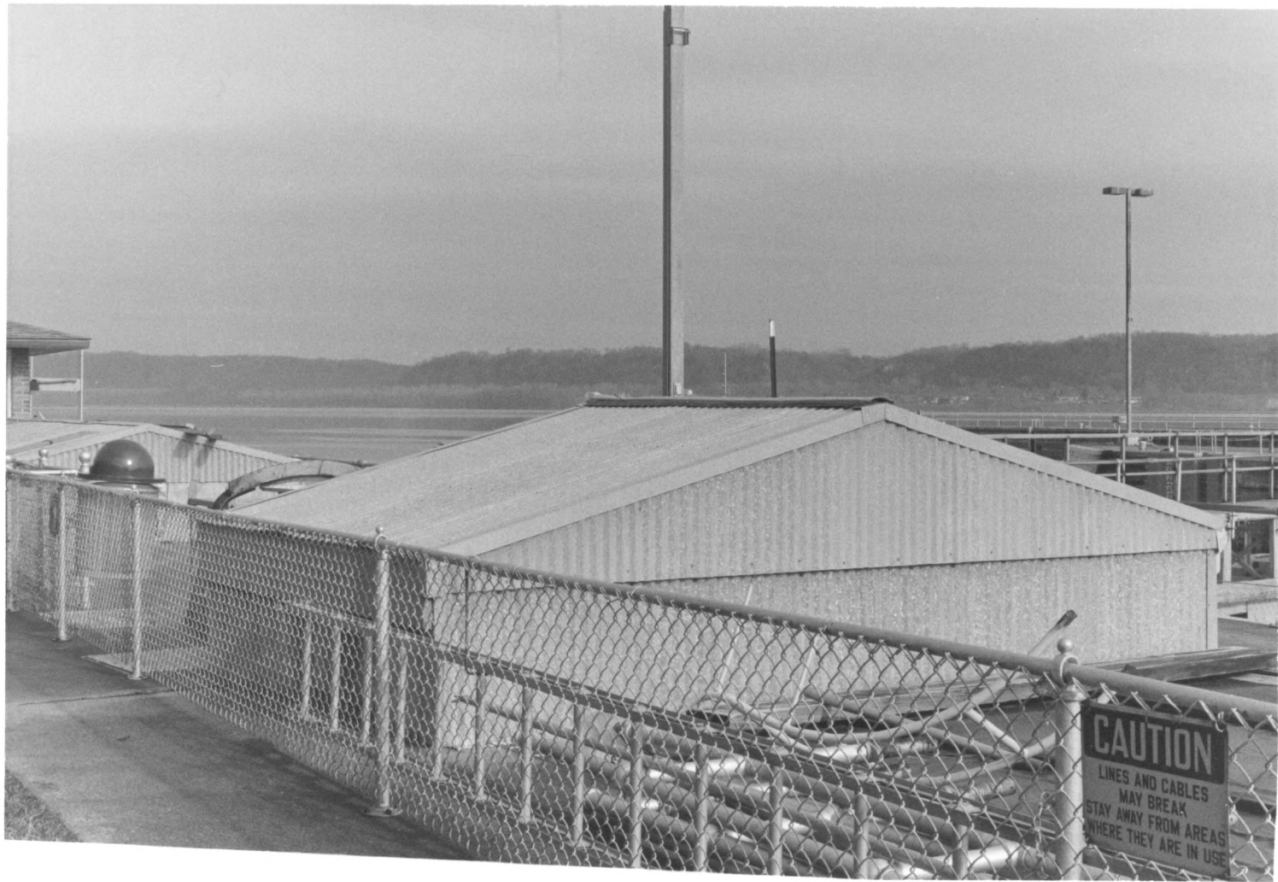
Dubuque, Dubuque County, IA

Mary Yeater Rathbun

February 1998

from driveway, looking northeast

L&D No. 11 Historic District Continuation Sheet, photo 7



UMR-NATIONAL Register, roll #5, frame 27, Environmental Impact Section,
Planning Division, Rock Island District, U.S. Army Corps of
Engineers, Rock Island, IL.

Upstream Land Wall Valve Operating Machinery
Lock and Dam No. 11 Historic District
11 Lime St.

Dubuque, Dubuque County, IA
Mary Yeater Rathbun

February 1998

from driveway, looking north

L&D Historic District Continuation Sheet, Photo 8
No 11.



UMR-NATIONAL REGISTER, roll #5, frame 27, Environmental Impact
Section, Planning Division, Rock Island District, U.S. Army
Corps of Engineers, Rock Island, IL.

Upstream Land wall Gate Operating Machinery
Lock and Dam No. 11 Historic District
11 Lime St.

Dubuque, Dubuque County, IA

Mary Yeater. Rathbun

February 1998

From driveway, looking north

L & D #11 Historic District Continuation Sheet, Photo 9



IA-23-23-HAER, IOWA, 31-DUBU, 11- HAER Collection, Prints and
Photographs Division, Library of Congress, Washington, D.C.

Style 16 Central Control Station, Lock and Dam No. 11 Historic District
11 Lime St.

Dubuque, Dubuque County, IA.

Peter A. Rothbun

September 1987

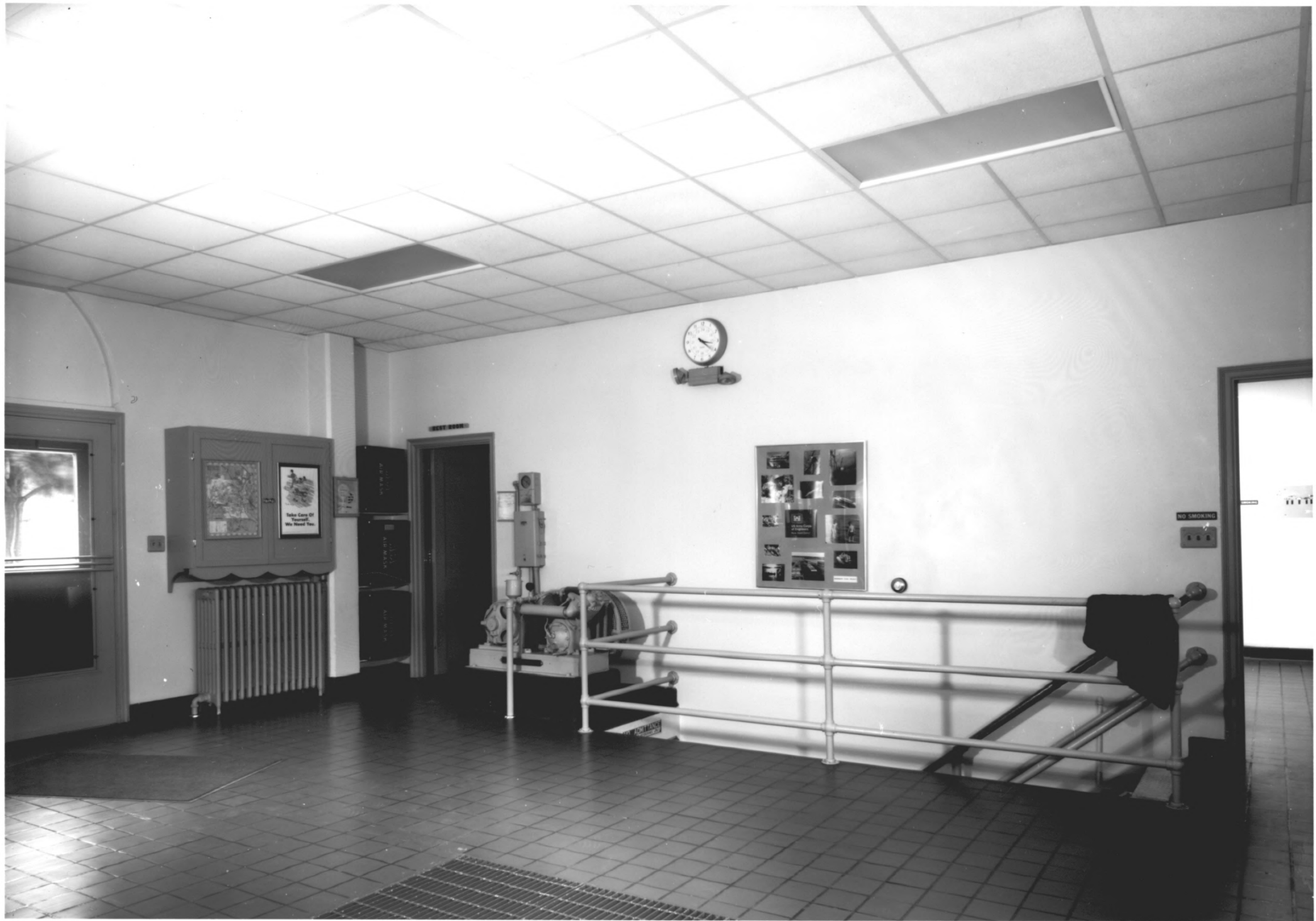
Front Facade, north and west sides, looking southeast

Cover document, photo 4

HAER IOWA, 31-DUBU, 11-25

Reproduced from the
Collection of the
LIBRARY OF CONGRESS

80 9946



IA-23-25, HAER, IOWA, 31-DUBU, 11- HAER Collection, Prints and
Photographs Division, Library of Congress, Washington, D. C.

Style 1b Central Control Station, Interior, Lock and Dam No. 11 Historic Dist.
11 Lime St.

Dubuque, Dubuque County, IA.

Peter A. Rathbun

September 1987

Main floor machinery room, looking north

Cover document, photo 5

HAER IOWA 31-DUBU 11-23

Reproduced from the
Collections of the
LIBRARY OF CONGRESS



IA-23-20, HAER, IOWA, 31-DUBU, 11- HAER Collection, Prints and
photographs ~~Division~~ Library of Congress, Washington, D.C.

Guard Wall

Lock and Dam No. 11 Historic District

11 Lime Street

Dubuque, Dubuque County, IA

Peter A. Rothbun

September 1987

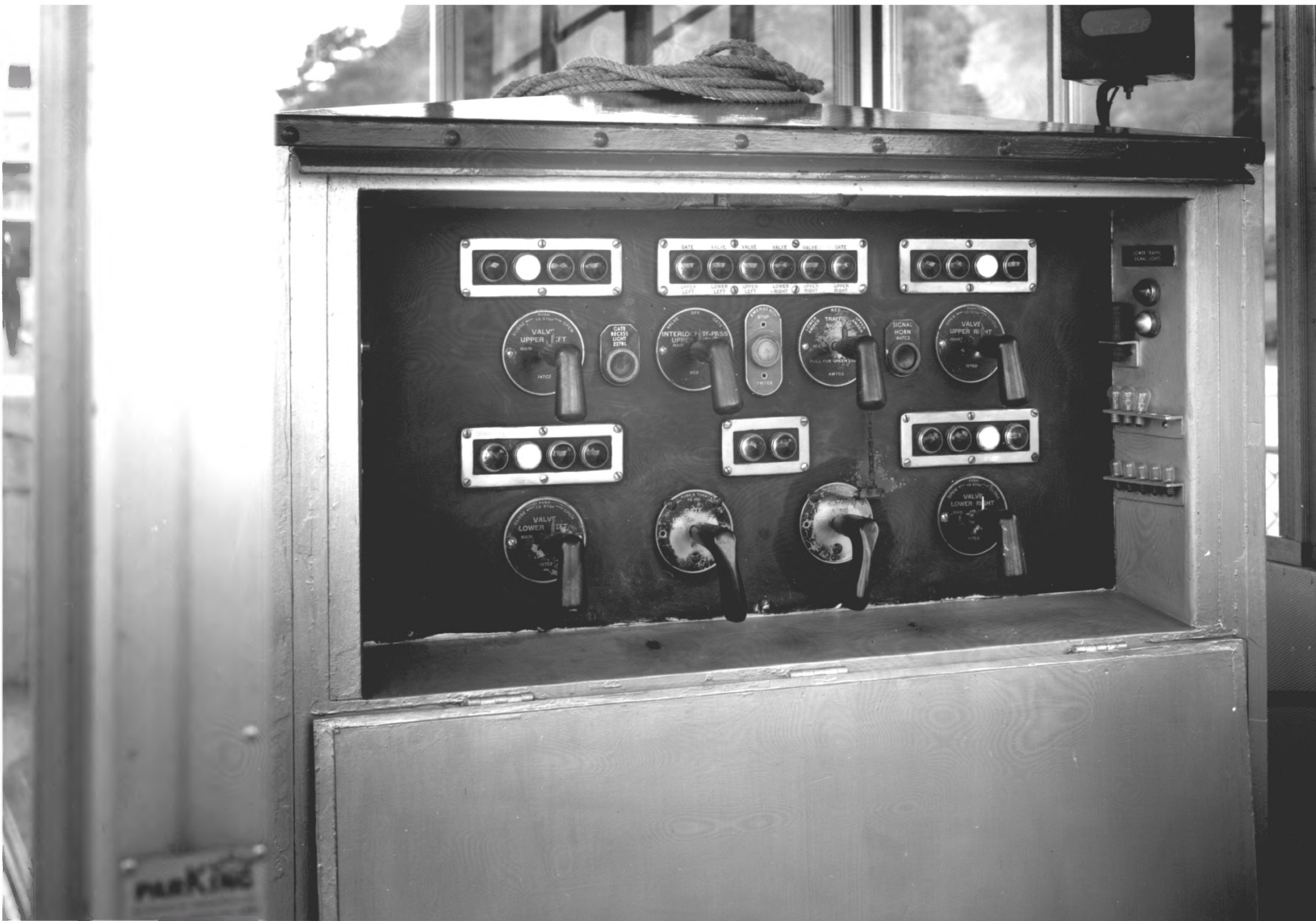
Riverward side, looking northwest

Cover document, photo 13

HAER IOWA49-BEL 1-2

Reproduced from the
Collections of the
LIBRARY OF CONGRESS

809946



#A-23-17, HAER, IOWA, 31-DUBU, 11-HAER Collection, Prints and
Photographs Division, Library of Congress, Washington, D.C.
Control Stand, Back, open
Lock and Dam No. 11 Historic District
11 Lime St.

Dubuque, Dubuque County, IA.

Peter A. Rothbun

September 1987

Landward side, looking northwest

Cover document, photo 38

HAER IOWA, 49-BEL 1-3

Reproduced from the
Collections of the
LIBRARY OF CONGRESS

809946



IA-23-5, HAER, IOWA, 31-DUBU, 11- HAER Collection, Prints and
Photograph Division, Library of Congress, Washington, D.C.

Winter Gate Bulkhead

Lock and Dam No. 11 Historic District

11 Lime St.

Dubuque, Dubuque County, IA.

Peter A. Rathbun

September 1987

east end of moveable dam, looking northeast

cover document, photo 39

HAER IOWA 31-13-11

Reproduced from the
Collections of the
LIBRARY OF CONGRESS

507746



IA-23-6, HAER, IOWA, 31-DUBU, 11- HAER Collection, Prints and
Photographs Division, Library of Congress, Washington, D.C.

Roller Gate Bulkheads

Lock and Dam No. 11 Historic District

11 Lime St.

Dubuque, Dubuque County, IA.

Peter A. Rothbun

September 1987

east end of moveable dam, looking southeast

Cover document, photo 40

HAER IOWA 49-BEL, 1-5

Reproduced from the
Collections of the
LIBRARY OF CONGRESS

809946



IA-23-11 HAER, IOWA, 3-DUBU, 11- HAER Collection,
Prints and photographs Division, Library of
Congress, Washington, D.C.

Pier House, Type 2a, Interior
Leck and Dam No. 11 Historic District
11. Lime St.

Dubuque, Dubuque County, IA
Peter A. Rathbun
September 1987

View to South

Cover document, photo 49

HAER IOWA 49-BE 11

Reproduced from the
Collections of the
LIBRARY OF CONGRESS

809946