



facing East

ORIGINAL 1769 OVEN

Abram Demaree House

Closter

Bergen County

New Jersey 034

*New Jersey*  
December 1978

detail of bake oven non house  
camera view E

AUG 6 1979

Neg at:

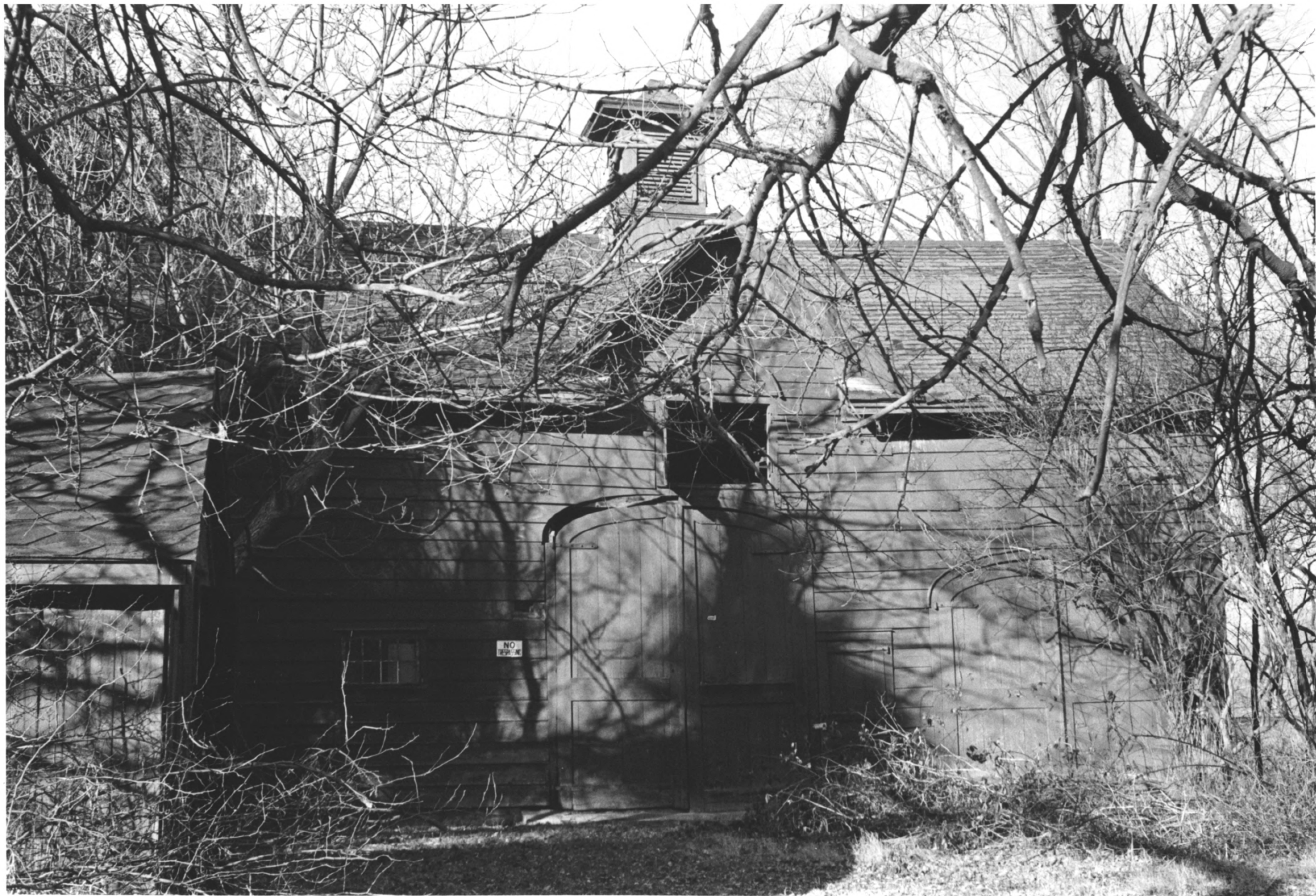
Susan McTigue

58 Poplar St.

Closter NJ

# 1876

NOV 1 1979  
DOE



Facing ~~E~~ West

BARN

Abram Demaree House

Closter

Bergen County, *New Jersey*

New Jersey 034 December 1978

view of barn

camera view W

AUG 6 1979

*#2 of 6*

Begin at:

Susan McTigue

58 Poplar St.

Closter NJ

*Doc*

NOV 1 1979



facing North

WORK SHED

Abram Demaree House  
Closter

Bergen County, *New Jersey*  
New Jersey 034 December 1978

view of Work Shed  
camera view N

AUG 6 1979

Neg at:  
Susan McTigue  
58 Poplar St.  
Closter NJ

# 3 of 6

DOE  
NOV 1 1979



Facing North

"CARETAKER'S" BLDG.

Abram Demaree House

Closter

Bergen County, *New Jersey*

New Jersey December 1978

view of caretakers, quarters

camera view N

*#4 of 6*

AUG 5 1979

Neg at:

Susan McTigue

58 Poplar St.

Clor NJ

*DOE*

NOV 1 1979





Facing South

Back 1809 WING

Abram Demaree House

Closter

Bergen County, *New Jersey*

December 1978

New Jersey

view of rear facade

camera view S

AUG 6 1979

Neg at:

Susan MCTigue

58 Poplar St.

Closter NJ

# 5 of 6

DOE

NOV 1 1979



facing North

1769 WING

Abram Demaree House

Closter

Bergen County, *New Jersey*

New Jersey December 1978

view of front facade

camera view N

AUG 6 1979

#6016

Neg at:

Susan McTigue

58 Poplar St.

Closter NJ

*DOE*  
NOV 1 1979