



⌘ ⌘

1671

GT-1202

1. Fort Christian (Map-No.1)  
✓Charlotte Amalie Historic District
2. Charlotte Amalie, St. Thomas, U.S.V.I.
3. Samuel Stokes
4. May 13, 1976
5. Planning Office, U.S.V.I.
6. North Facade. South
7. Roll 4 Exp. 13

B

JUL 19 1976

JUN 2 1976  
108 30

PROPERTY OF THE NATIONAL REGISTER



1. Legislature Building (Map-No.2)  
✓ Charlotte Amalie Historic District  
Also KNOWN AS "BARRICKS"
2. Charlotte Amalie, St. Thomas, U.S.V.I.
3. Samuel Stokes
4. May 13, 1976
5. Planning Office, U.S.V.I.
6. North Facade. South
7. Roll 4 Exp.17

JUL 19 1976

JUN 2 1976

2 of 30



1. Emancipation Park (Map No.3)  
Charlotte Amalie Historic District
2. Charlotte Amalie, St. Thomas, U.S.V.I.
3. Samuel Stokes
4. May 13, 1976
5. Planning Office, U.S.V.I.
6. View from west
7. Roll 4 Exp 11

3 of 30

JUL 10 1976  
JUN 2 1976





1. Commercial Hotel and Coffee House  
(Grand Hotel) (Map-No.4)  
Charlotte Amalie Historic District

2. Charlotte Amalie, St. Thomas, V.I.

3. Samuel Stokes

4. May 13, 1976

5. Planning Office, U.S.V.I.

6. West Facade. East

7. Roll 4 Exp. 10

4 of 30

JUL 30 1976

JUN 2 1976





BRYHANIA

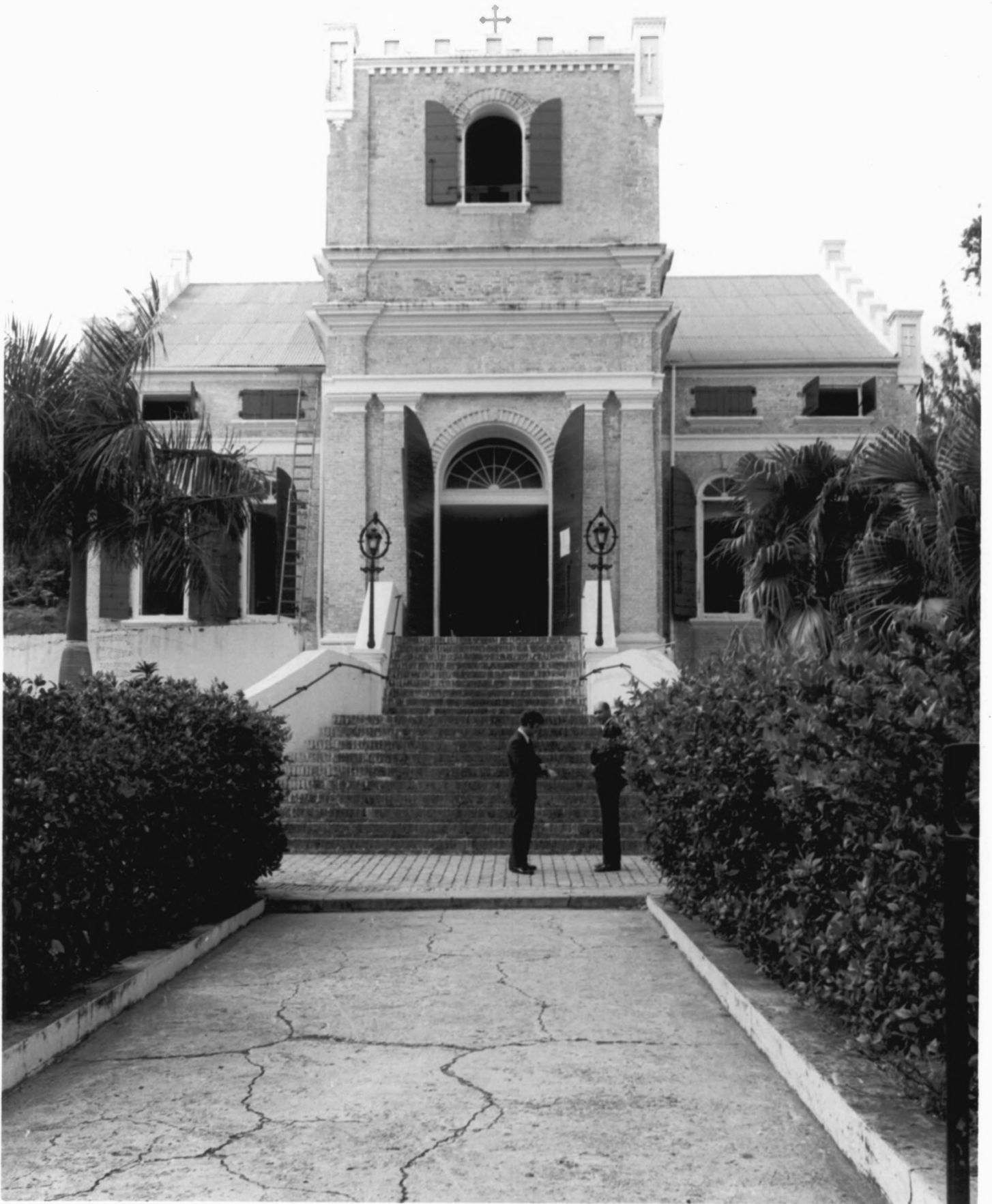
FREDERICK  
CHURCH  
OFFICE

JUDY THOMAS

1. J.S. Lind House (Bethania)  
Charlotte Amalie Historic District  
(Map - No 5)
2. Charlotte Amalie, St. Thomas, U.S.V.I.
3. Samuel Stokes
4. May 13, 1976
5. Planning Office, U.S.V.I.
6. South Facade. North
7. Roll 4 Exp. 7

JUL 19 1976

JUN 2 1976  
5 of 30



1. Frederick Lutheran Church  
Charlotte Amalie Historic District  
(6 on map)
2. Charlotte Amalie, St. Thomas, U.S.V.I.
3. Samuel N. Stokes
4. May 13, 1976
5. Planning Office, U.S.V.I.
6. South facade
7. Roll 4, Exp. 6

6 of 30

JUL 19 1976 JUN 2 1976





1. Old Unity Lodge  
Charlotte Amalie Historic District  
(7 on map)
2. Charlotte Amalie, St. Thomas, U.S.V.I.
3. Trudi Seaberg
4. March 1976
5. Box 2326, St. Thomas, U.S.V.I.
6. Southwest facade
7. Roll 1, Exp. 33

7 of 30  
JUN 2 1976

JUL 19 1976

PROPERTY OF THE NATIONAL REGISTER





1. Moravian Memorial Church  
Charlotte Amalie Historic District  
(8 on map)
2. Charlotte Amalie, U.S.V.I.
3. Samuel N. Stokes
4. May 13, 1976
5. Planning Office, U.S.V.I.
6. South facade
7. Roll 4, Exp. 1

8 of 30

JUN 2 1976  
JUL 19 1976

PROPERTY OF THE NATIONAL REGISTER



1. Government House  
Charlotte Amalie Historic District  
(9 on map)
2. Charlotte Amalie, St. Thomas,  
U.S.V.I.
3. Samuel N. Stokes
4. May 13, 1976
5. Planning Office, U.S.V.I.
6. South facade
7. Roll 3, Exp. 28

*9 of 30*  
JUL 19 1976 JUN 2 1976

PROPERTY OF THE NATIONAL REGISTER



1. Quarters "B" (10 on map)  
Charlotte Amalie Historic District
2. Charlotte Amalie, St. Thomas, U.S.V.I.
3. Trudi Seaberg
4. March, 1976
5. Box 2326, St. Thomas, U.S.V.I.
6. North Facade
7. Roll 2, Exp. 10

JUL 19 1976

JUN 2 1976  
10 of 30

PROPERTY OF THE NATIONAL REGISTER



1. Lavalette House (#11 on map)  
Charlotte Amalie Historic District
2. Charlotte Amalie, St. Thomas, U.S.V.I.
3. Trudi Seaberg
4. May 24, 1976
5. Planning Office, U.S.V.I.
6. South Facade
7. Roll 11, Exp. 7

JUL 19 1976

11 of 30

JUN 2 1976





1. St. Thomas Reformed Church  
Charlotte Amalie Historic District  
(13 on map)
2. Charlotte Amalie, St. Thomas,  
U.S.V.I.
3. Samuel N. Stokes
4. May 13, 1976
5. Planning Office
6. West facade
7. Roll 3, Exp. 20

130630

JUN 2 1976

JUL 19 1976



1. Synagogue of Beracha Veshalom  
Vegimiluth Hasidim  
Charlotte Amalie Historic District  
(14 on map)
2. Charlotte Amalie, St. Thomas, U.S.V.I.
3. Samuel N. Stokes
4. May 13, 1976
5. Planning Office, U.S.V.I.
6. South facade
7. Roll 3, Exp.24

JUL 19 1976

14 of 30  
JUN 2 1976



1. Villa Santana  
Charlotte Amalie Historic District  
(15 on map)
2. Charlotte Amalie, St. Thomas,  
U.S.V.I.
3. Samuel N. Stokes
4. May 13, 1976
5. Planning Office, U.S.V.I.
6. South Elevation
7. Roll 5, Exp. 8

15 of 30

JUN 2 1976

JUL 19 1976

PROPERTY OF THE NATIONAL REGISTER







1. Denmark Hill  
Charlotte Amalie Historic District (16 on map)
2. Charlotte Amalie, St. Thomas, U. S. V. I.
3. Samuel N. Stokes
4. May 13, 1976
5. Planning Office, U. S. V. I.
6. Southeast Corner
7. Roll 2, Exp. 16

16 of 30

JUL 19 1976 JUN 2 1976



1. Market Place (Map-No.17)  
Charlotte Amalie Historic District
2. Charlotte Amalie, St. Thomas, U.S.V.I.
3. Samuel Stokes
4. May 13, 1976
5. Planning Office, U.S.V.I.
6. View from southwest
7. Roll 3 Exp. 19

17 of 30 .

JUL 19 1976

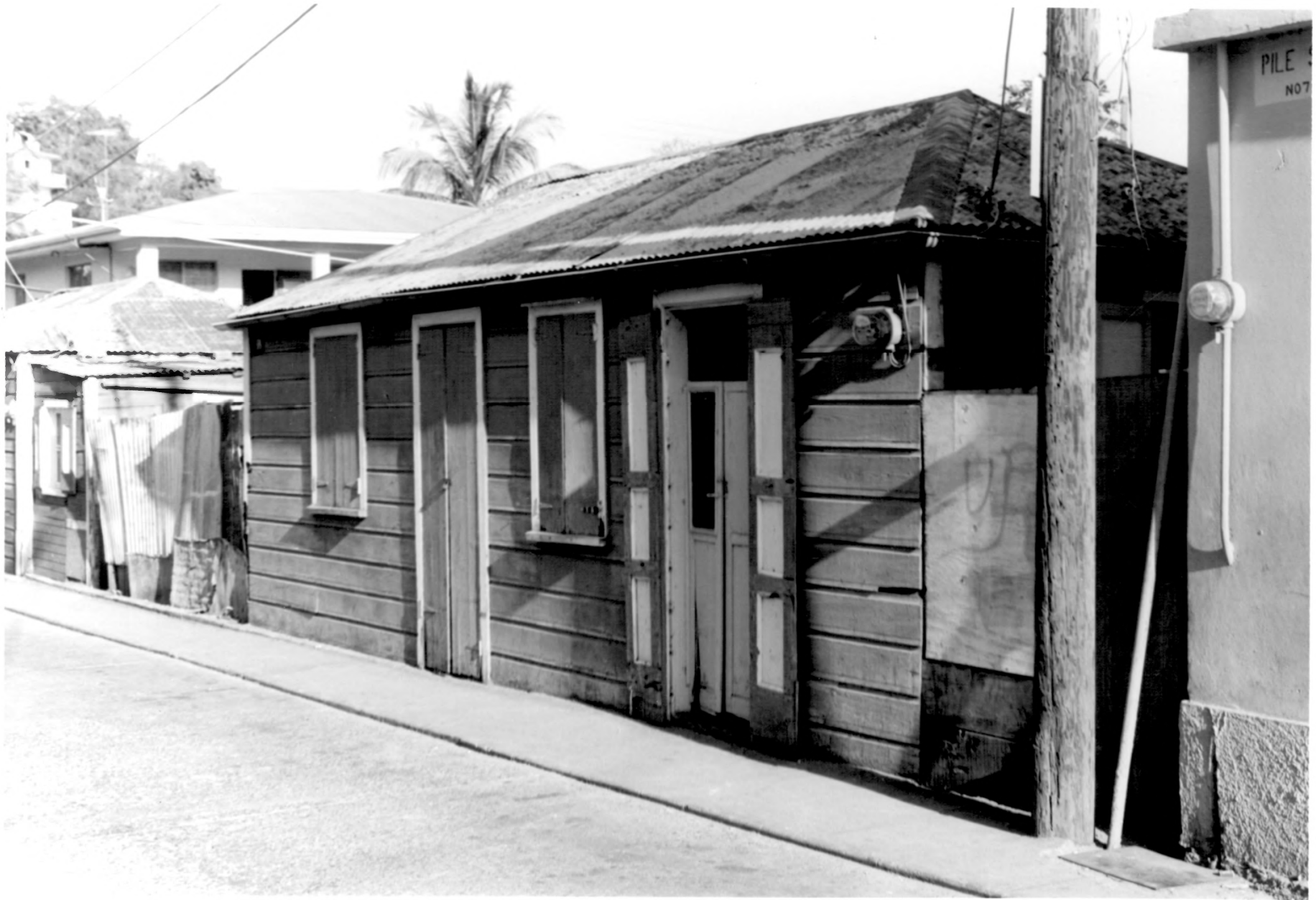
JUN 2 1976



1. Kronprindsen Gade 87  
Charlotte Amalie Historic District  
(18 on map)
2. Charlotte Amalie, St. Thomas,  
U.S.V.I.
3. Samuel N. Stokes
4. May 13, 1976
5. Planning Office, U.S.V.I.
6. North facade
7. Roll 4, Exp. 19  
JUL 19 1976

180730  
JUN 2 1976

PROPERTY OF THE NATIONAL REGISTER



PILE 5  
NO 7

1. House on Silkegade, Savanne  
Charlotte Amalie Historic District  
(No. 19 on map)
2. Charlotte Amalie, St. Thomas, U.S.V.I.
3. Samuel N. Stokes
4. May 13, 1976
5. Planning Office, U.S.V.I.
6. North Facade
7. Roll 3, Exp. 16

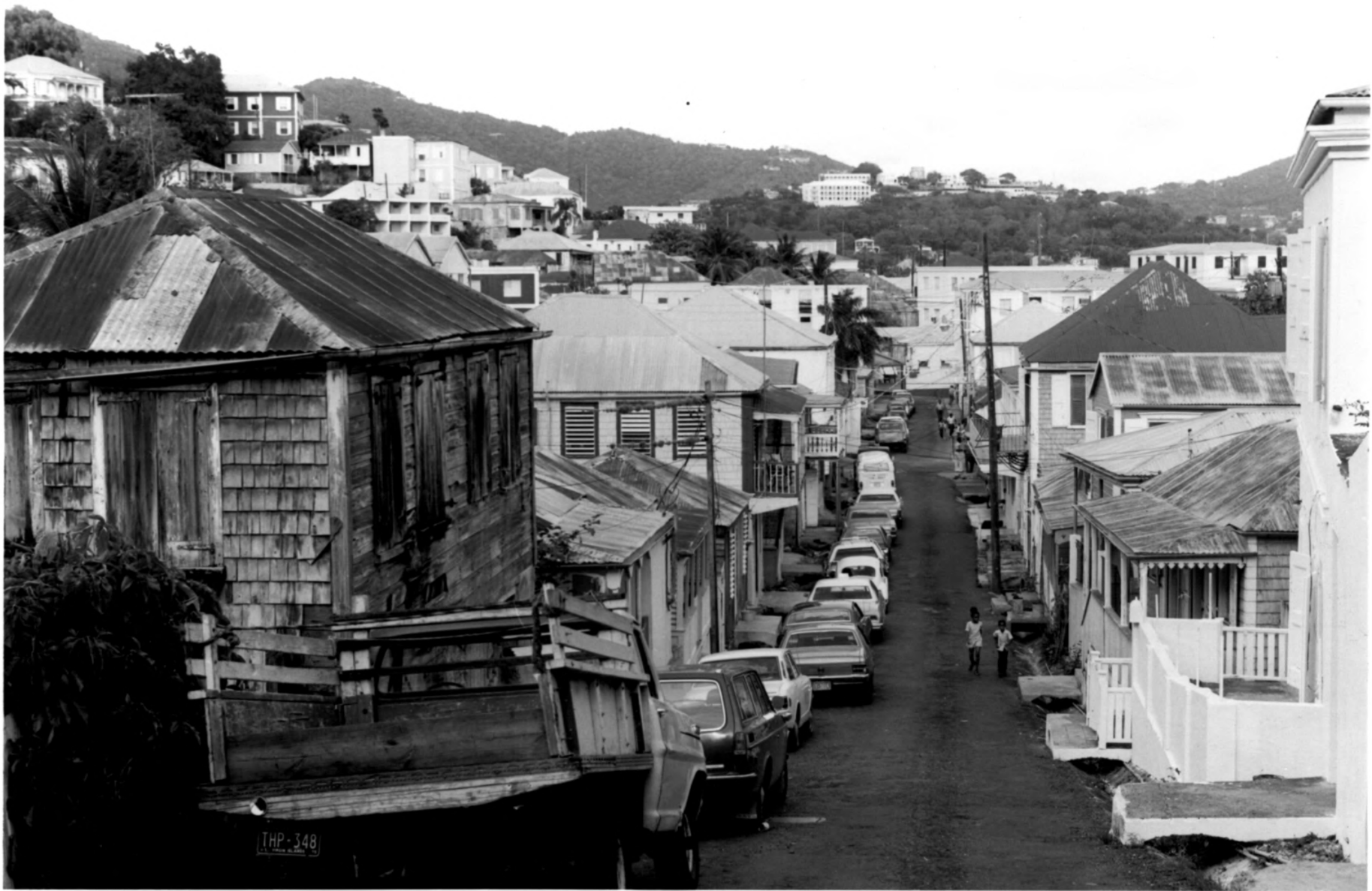
JUL 19 1976

JUN 2 1976

19 of 30

PROPERTY OF THE NATIONAL REGISTER





1. Savanne  
Charlotte Amalie Historic District  
*No. 19 on map*
2. Charlotte Amalie, St. Thomas,  
U.S.V.I.
3. Samuel N. Stokes
4. May 13, 1976
5. Planning Office, U.S.V.I.
6. West to East
7. Roll 4, Exp. 35A

JUN 2 1976

JUL 19 1976

20 of 30





1. Pilestade at Sike Gade  
Charlotte Amalie Historic District  
*Savanne. No 19 on Map*
2. Charlotte Amalie, St. Thomas,  
U.S.V.I.
3. Samuel N. Stokes
4. May 13, 1976
5. Planning Office, U.S.V.I.
6. View to the south
7. Roll 3, Exp. 15

JUN 2 1976  
JUL 19 1976 21 of 30

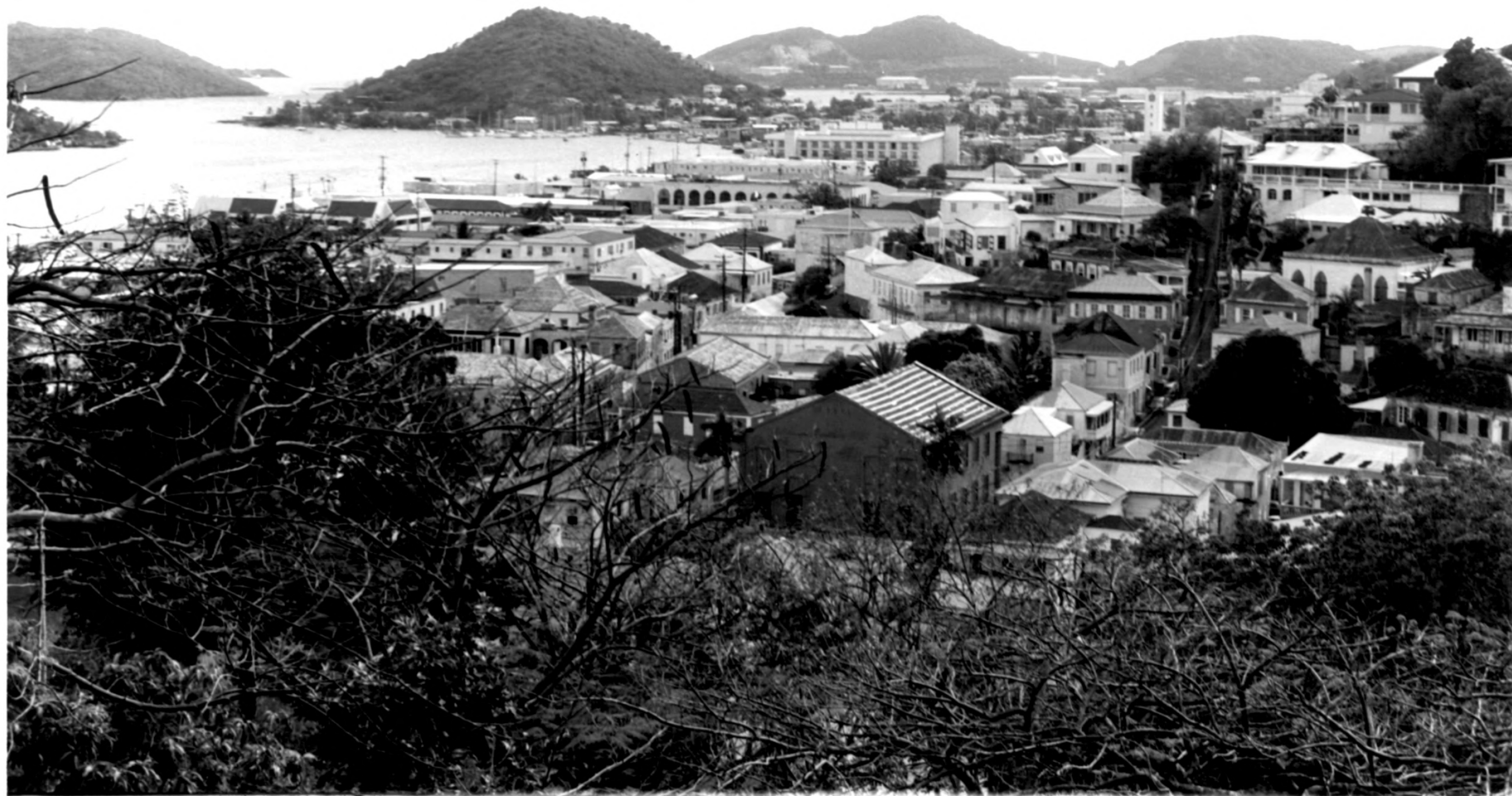




1. View down Kōngens gade in New Town  
Charlotte Amalie Historic District  
*No 20 on map.*
2. Charlotte Amalie, St. Thomas,  
U.S.V.I.
3. Samuel N. Stokes
4. May 13, 1976
5. Planning Office, U.S.V.I.
6. View east to west
7. Roll 3, Exp. 35

*22 of 30*  
JUN 2 1976  
JUL 19 1976





1. Aerial view of Charlotte Amalie  
from Blue Beard's Hill  
Charlotte Amalie Historic District
2. Charlotte Amalie, St. Thomas,  
U.S.V.I.
3. Samuel N. Stokes
4. May 13, 1976
5. Planning Office, U.S.V.I.
6. E to W
7. Roll 4, Exp. 28A

JUN 2 1976

JUL 19 1976 23 of 30



1. Main Street, across from Market  
Charlotte Amalie Historic District
2. Charlotte Amalie, St. Thomas, U.S.V.I.
3. Samuel N. Stokes
4. May 24, 1976
5. Planning Office, U.S.V.I.
6. SE Corner
7. Roll 11, Exp. 30

JUN 2 1976

JUL 19 1976

24 of 30

PROPERTY OF THE NATIONAL REGISTER



1. The Lange Building (Enid M. Baa Library)  
Charlotte Amalie Historic District
2. Charlotte Amalie, St. Thomas, U.S.V.I.
3. Samuel N. Stokes
4. May 13, 1976
5. Planning Office, U.S.V.I.
6. South elevation
7. Roll 10, Exp. 9

JUL 19 1976

JUN 2 1976

26 of 30

PROPERTY OF THE NATIONAL REGISTER





1. "99 Steps"  
Charlotte Amalie Historic District
2. Charlotte ~~Amalie~~, St. Thomas  
U.S.V.I.
3. Samuel N. Stokes
4. May 13, 1976
5. Planning Office, U.S.V.I.
6. South to North view
7. Roll 3, Exp. 14

27 of 30

JUN 2 1976

JUL 19 1976

PROPERTY OF THE NATIONAL REGISTER



1. Northside of Norregade  
Charlotte Amalie Historic District
2. Charlotte Amalie, St. Thomas, U. S. V. I.
3. Samuel N. Stokes
4. May 13, 1976
5. Planning Office, U. S. V. I.
6. South elevation
7. Roll 4, Exp. 4A.

28 of 30  
JUN 2 1976  
JUL 19 1976

PROPERTY OF THE NATIONAL REGISTER





1. Typical House in New Town Hospital Street at Hospital Line Street  
Charlotte Amalie Historic District
2. Charlotte Amalie, St. Thomas, U.S.V.I.
3. Samuel N. Stokes
4. May 13, 1976
5. Planning Office, U.S.V.I.
6. View from Northwest
7. Roll 3, Exp. 30

29 of 30  
JUN 2 1976

JUL 19 1976





1. Main Street Shop  
Charlotte Amalie Historic District
2. Charlotte Amalie, St. Thomas,  
U.S.V.I.
3. Samuel N. Stokes
4. May 13, 1976
5. Planning Office, U.S.V.I.
6. North facade
7. Roll 4, Exp. 23A  
JUL 19 1976

JUN 2 1976

30 of 30