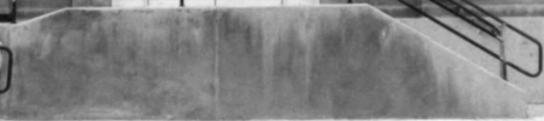


UNITED STATES POST OFFICE ELM NEVADA







UNITED STATES POST OFFICE

12 MIN. PARKING  
24 HOURS  
7 DAYS  
A WEEK







MUNICIPAL GOVERNMENT BUILDING

NO PARKING  
24 HOURS  
7 DAYS  
A WEEK

1. The first part of the document discusses the importance of maintaining accurate records of all transactions. It emphasizes that proper record-keeping is essential for the integrity of the financial system and for the ability to detect and prevent fraud.

2. The second part of the document outlines the various methods used to collect and analyze data. It describes the process of gathering information from different sources and how this data is then processed to identify trends and anomalies. This section also discusses the challenges associated with data collection and analysis, such as ensuring the accuracy and reliability of the data.

3. The third part of the document focuses on the role of technology in modern data analysis. It highlights the use of advanced software and tools to handle large volumes of data and to perform complex calculations. This section also discusses the importance of staying up-to-date with the latest technological developments in the field of data analysis.









U.S. Post Office, Ely  
White Pine Cty, NV  
Photo #5



-14  
✓







Handwritten text, possibly bleed-through from the reverse side of the page. The text is extremely faint and illegible. Some faint shapes and dark spots are visible, but no words can be discerned.





Handwritten text, possibly bleed-through from the reverse side of the page. The text is extremely faint and illegible due to low contrast and blurring. It appears to be organized into several lines or paragraphs, but no specific words or numbers can be discerned.



UNITED STATES POST OFFICE - NEVADA

U.S. Bureau of  
White Paper  
Notes & ...



15. The above is a list of the  
names of the persons who  
were present at the meeting  
held on the 15th day of  
the month of June, 1900.