



The James Wylie House

208 E. Main Street

White Sulphur Springs, WU

Photographer: Cheryl Griffith Fall, 1988

Negative w/ C. Griffith

Camera Faces North

Photo #1





The James Wylie House

208 E. Main Street

White Sulphur Springs, WU

Photographer: Cheryl Griffith Fall, 1988

Negative w/ C. Griffith

Camera Faces Southwest

Photo #2







Log Cabin Behind The James Wylie House

208 E. Main Street

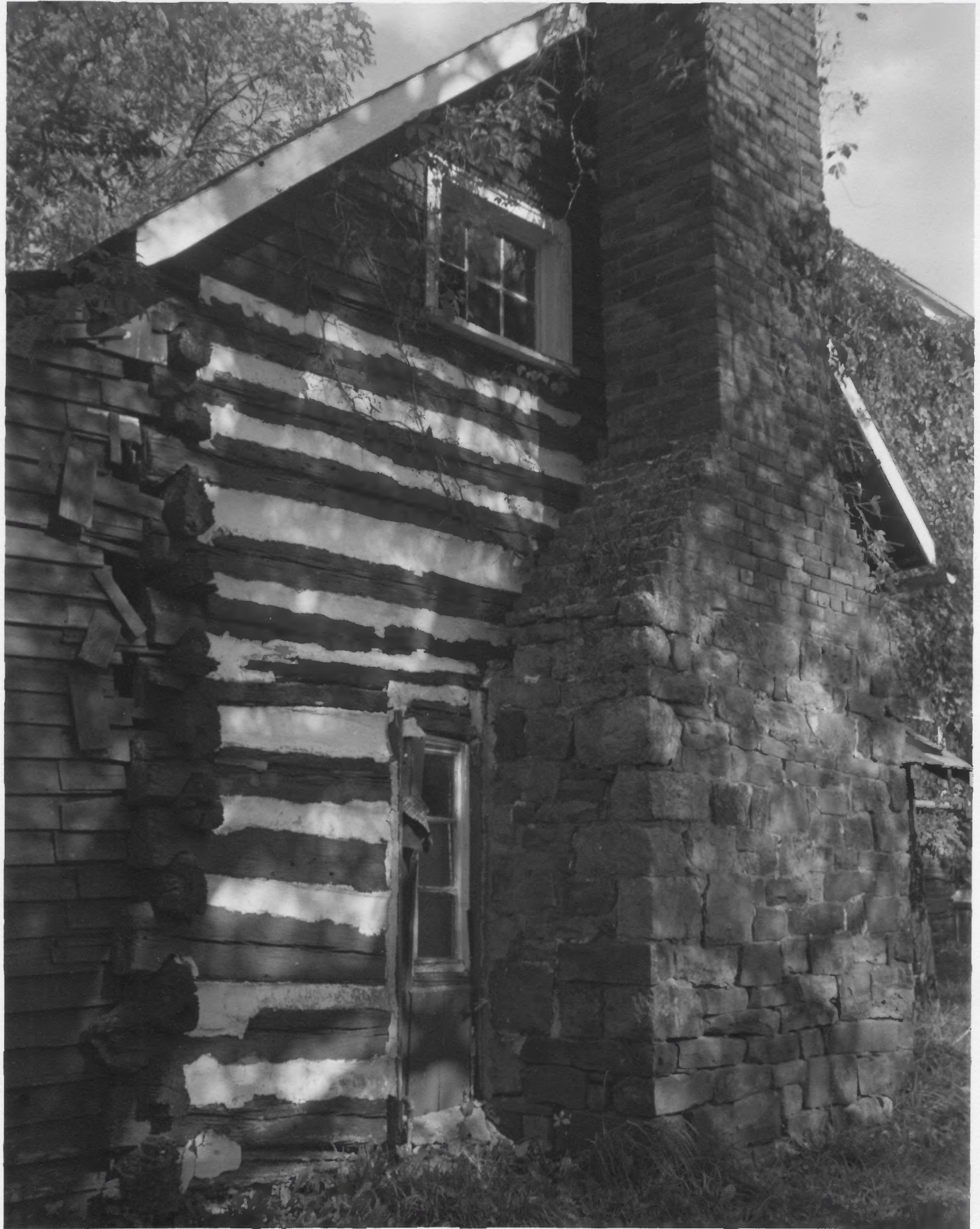
White Sulphur Springs, WU

Photographer: Cheryl Griffith Fall, 1988

Negative w/ C. Griffith

Camera Faces West

Photo # 3





Log Cabin Behind The James Wylie House

268 E. Main Street

White Sulphur Springs, WV

Photographer: Cheryl Griffith Fall, 1988

Negative w/ C. Griffith

Camera Faces East

Photo # 4







The James Wylie House

208 E. Main St.

White Sulphur Springs, WV

Cheryl Griffith

October, 1989

Cheryl Griffith

Southwest

PHOTO 5 OF 5