

=====

4. National Park Service Certification

=====

I, hereby certify that this property is:

- entered in the National Register _____
- ___ See continuation sheet. _____
- ___ determined eligible for the _____
- National Register _____
- ___ See continuation sheet. _____
- ___ determined not eligible for the _____
- National Register _____
- ___ removed from the National Register _____

___ other (explain): _____

Patricia Andrus 2/28/2009
Signature of Keeper Date
 of Action

=====

5. Classification

=====

Ownership of Property (Check as many boxes as apply)

- ___ private
- public-local
- ___ public-State
- ___ public-Federal

Category of Property (Check only one box)

- ___ building(s)
- ___ district
- ___ site
- ___ structure
- object

Number of Resources within Property

| Contributing | Noncontributing |
|--------------|---------------------|
| <u>0</u> | <u>0</u> buildings |
| <u>0</u> | <u>0</u> sites |
| <u>0</u> | <u>0</u> structures |
| <u>1</u> | <u>0</u> objects |
| <u>1</u> | <u>0</u> Total |

Number of contributing resources previously listed in the National Register 0

Name of related multiple property listing (Enter "N/A" if property is not part of a multiple property listing.) N/A

United States Department of the Interior
National Park Service

NATIONAL REGISTER OF HISTORIC PLACES
CONTINUATION SHEET

Section 7 Page 1

WCTU Temperance Fountain
name of property
Sussex County, Delaware
county and State

Physical Description

The Woman's Christian Temperance Union Fountain is located at the foot of Rehoboth Avenue on the boardwalk perpendicular to the street in the beach resort community of Rehoboth Beach, Sussex County, Delaware. This object is a stone drinking fountain placed in a prominent location, in the public space at the foot of the main street where it intersects with the ocean in this former Methodist Camp community. Oriented parallel to the coastline, the drinking fountain has had few alterations made to it and retains a high degree of integrity.

The WCTU Fountain is a simply designed object is built of rough ashlar granite block construction generally rectangular in footprint and composed of an arch set on top of a base, the top section composed of three blocks of stone, an arch shaped block set on two rectangular stones. The intrados of the arch is of smooth ashlar finish. The fountain is 6 ½' tall, 32" wide and 12" deep. The spigot is placed between the arch blocks on a piece of white marble 17" wide. A rough aggregate concrete step 18"x24"x10" was placed along the ocean side at a later date to assist children in reaching the spigot.

The front facade of the fountain faces the ocean. Set into this eastern face is a brass dedication plaque, rectangular in shape, twelve by six inches. The plaque text reads: Erected by WCTU; Rehoboth Beach; 1929. The north and south faces of the fountain, the narrowest elevations, are identical, unadorned rough stone and slightly flared at the base. The street side, west elevation, of the fountain resembles the ocean side but without the dedication plaque.

The major alteration to the fountain was the replacement of the original spigot with a bubbler head which appears to have been changed in the last few years. However the white marble splash block and central brass drain appear to be original.

=====
8. Statement of Significance
=====

Applicable National Register Criteria (Mark "x" in one or more boxes for the criteria qualifying the property for National Register listing)

- A Property is associated with events that have made a significant contribution to the broad patterns of our history.
- B Property is associated with the lives of persons significant in our past.
- C Property embodies the distinctive characteristics of a type, period, or method of construction or represents the work of a master, or possesses high artistic values, or represents a significant and distinguishable entity whose components lack individual distinction.
- D Property has yielded, or is likely to yield information important in prehistory or history.

Criteria Considerations (Mark "X" in all the boxes that apply.)

- A owned by a religious institution or used for religious purposes.
- B removed from its original location.
- C a birthplace or a grave.
- D a cemetery.
- E a reconstructed building, object, or structure.
- F a commemorative property.
- G less than 50 years of age or achieved significance within the past 50 years.

Areas of Significance (Enter categories from instructions)

Social History

Period of Significance 1929-1958

Significant Dates 1929

Significant Person (Complete if Criterion B is marked above)

N/A

Cultural Affiliation N/A

Architect/Builder Unknown

Narrative Statement of Significance (Explain the significance of the property on one or more continuation sheets.)

United States Department of the Interior
National Park Service

NATIONAL REGISTER OF HISTORIC PLACES
CONTINUATION SHEET

Section 8 Page 1

WCTU Temperance Fountain
name of property
Sussex County, Delaware
county and State

Statement of Significance

The Woman's Christian Temperance Union (WCTU) fountain, located on the Boardwalk at the foot of Rehoboth Avenue in the former Methodist camp meeting community of Rehoboth Beach in Sussex County, Delaware, is the last surviving physical object to recognize the important contributions of this woman's organization to the history of Delaware. Eligible for listing in the National Register of Historic Places under Criterion A, the WCTU Temperance fountain represents this important women's civic organization who took a prominent role in promoting social welfare causes in Delaware from the 1870s to the 1960s. This fountain, erected in 1929 to commemorate the fiftieth anniversary of the founding of the Delaware branch of this national organization, reflects the heart of the mission of this organization: to promote abstinence from alcohol as symbolized by providing water as an alternative. The WCTU fountain has not been substantially changed since its placement in 1929 and retains its architectural integrity. It is being nominated at the state level of significance.

Background

The Woman's Christian Temperance Union had its beginnings in the early 1870s and remains a functioning organization today. The historical narrative as described on the WCTU web site summarizes their beginnings as follows:

In many towns in Ohio and New York in the fall of 1873 women concerned about the destructive power of alcohol met in churches to pray and then marched to the saloons to ask the owners to close their establishments. They met with success but it was only temporary so by the next summer the women concluded that they must become organized nationally. This led to the founding of the National Woman's Christian Temperance Union - the oldest continuing non-sectarian woman's organization in the world.¹

Delaware women were interested in the temperance cause, forming the Women's Temperance Union of Delaware in 1874 that required members pledge to keep all forms of intoxicating liquors out of their homes. Members of this organization took an activist stand seemingly modeling their behavior after the women Crusaders in Ohio, petitioning the legislature to outlaw alcohol for other than medicinal purposes, and visiting saloons. An internal leadership crisis precipitated the organization disbanding in 1877.²

¹ <http://www.wctu.org/history.html> captured on February 21, 2008.

² Anna Downham Weldin, Background and History of Delaware Woman's Christian Temperance Union. Typewritten booklet. c.1969. p.2 In pamphlet collection of the Historical Society of Delaware.

United States Department of the Interior
National Park Service

NATIONAL REGISTER OF HISTORIC PLACES
CONTINUATION SHEET

Section 8 Page 2

WCTU Temperance Fountain
name of property
Sussex County, Delaware
county and State

Building on the earlier interest, in 1877 Frances Willard, National President of the WCTU came to Delaware and focused on organizing town chapters of the national organization in Wilmington, Middletown and Dover. By 1880 there were nine town WCTU chapters across the state who responded to a request from the Wilmington chapter to hold a state-wide convention in Grace Church (Methodist) Chapel in Wilmington on October 15, 1880. Frances Willard returned to Delaware to run the meeting. The Convention formally agreed to be an affiliated state-level organization with the national WCTU and Sarah Bringham was elected president.³

In 1882 the national WCTU focused on developing subsidiary groups to organize young people interested in the temperance cause at the state and local levels. Delaware unions followed suit and youth groups called the Loyal Temperance Legion and the Young Woman's Christian Temperance Union were established in communities with established WCTU unions.

By 1890, the Delaware WCTU had over 700 members with 13 individual unions in New Castle County alone. Unions were organized by geography, age, and other interests. There were 17 Young WCTU chapters (YWCTUs) and a Mother's Union in Wilmington had a membership of 225. Chapters were segregated. Wilmington, Middletown and Newport had separate unions for African-American women. Six unions ran reading rooms focused and the state Union was looking for a building to purchase as a headquarters.⁴

Following the lead of the national organization, the Delaware WCTU organized committees or departments focused on specific issues of interest to the larger group. The decade of the 1890s was a particularly successful one for social reform in Delaware and the WCTU was part of that. Annual reports of the organization list the various activities of interest including: spreading the doctrine of temperance and Christianity through literature distribution, promoting a "Scientific" temperance curriculum in public schools, women's suffrage, and prison reform. Another early focus of effort of the Delaware WCTU was a department called "Social Purity" which focused on creating an industrial school for girls to remove young, impressionable women from the general population of the prison system and provide for an opportunity to learn a skill and rehabilitate. A similar school for boys, the Ferris School, was established in 1885 with the same aim for young men. Seen as an important need, and aligned with churches, prominent Delaware social reformers and other women's groups, the WCTU

³ A charter and bylaws were adopted allowing individual chapters to not be bound by decisions of the state chapter but to follow the lead of the national organization. "Annual Report of the Woman's Christian Temperance Union of Delaware" 1892, 1893. Delaware Public Archives, Record Group 1501 Series 036, Records of the Delaware Industrial School for Girls.

⁴ Eventually the reading room run by the Wilmington WCTU at 801 N. 8th Street was purchased by the State Union. This building was demolished for a parking lot for the adjacent church by 1997.

United States Department of the Interior
National Park Service

NATIONAL REGISTER OF HISTORIC PLACES
CONTINUATION SHEET

Section 8 Page 3

WCTU Temperance Fountain
name of property
Sussex County, Delaware
county and State

cooperated in an effort to lobby the legislature for the creation of the Delaware Industrial School for Girls. In 1891 at the State's annual WCTU convention, held in Smyrna, a resolution was passed to exercise political pressure to improve the lot of women and girls in the state prison system.

Whereas, we have recently seen the necessity of an institution of the nature of a State Industrial School for girls and women, therefore, be it resolved, That we proceed to take active measures to bring the attention of our law-makers to this matter, and to prepare a bill to be placed before our Legislature providing for enactment and appropriations to that end, which we believe to be requisite, from the fact that girls and women in our state are committed to jails and prisons which are unfit for their incarceration."⁵

Time was right for this reform effort and it was quickly successful. The Delaware Legislature chartered the Delaware Industrial School for Girls in April 1893. Subsequent annual reports of the school indicate the various unions from across the state continued to support the Industrial School through annual donations of supplies, materials, food and funds. Women who claimed leadership positions with the WCTU also held prominent positions on their board of trustees.

Fountains and the National WCTU

The National WCTU provided the overall direction for the individual unions in the state. One of the first national initiatives was to build temperance fountains across the country. In November, 1874 the first national meeting of the Woman's Christian Temperance Union was held in Cleveland, Ohio. At this meeting it was decided that a project for the WCTU would be to erect water fountains in cities.

At the 1874 organizing convention of the National Woman's Christian Temperance Union, the members were urged to erect drinking fountains in their towns so that men could get a drink of water without entering saloons and staying for stronger drinks. Often the drinking fountains that were erected offered a place for horses to drink, another place for dogs, and of course, a place for humans to drink.⁶

⁵ Anna Downham Weldin, Background and History of Delaware Woman's Christian Temperance Union. Typewritten booklet. c.1969. p.9 In pamphlet collection of the Historical Society of Delaware.

⁶ <http://www.wctu.org/fountains.html> captured on February 21, 2008.

United States Department of the Interior
National Park Service

NATIONAL REGISTER OF HISTORIC PLACES
CONTINUATION SHEET

Section 8 Page 4

WCTU Temperance Fountain
name of property
Sussex County, Delaware
county and State

Fountains were erected across the country. A recent informal survey by the WCTU identified 61 surviving fountains across the world erected by the WCTU including 24 states in the U.S. with Canada, Australia and England also represented. Most states had only one identified fountain but California leads with the largest number at eleven and Massachusetts is second at eight. One WCTU fountain, placed in Shenandoah, Iowa, was individually listed in the National Register of Historic Places in 1984. The history of the national organization called "The White Ribbon Story" pictures a sampling of fountains from across the country and includes the fountain at Rehoboth Beach, Delaware.⁷

Unfortunately, the WCTU Temperance Fountain is the only surviving property at which to recognize the contributions of this important organization. The entire campus of Woods-Haven Kruse School, as the Delaware Industrial School for Girls was later known, near Claymont, Delaware was demolished in the late 1990s for a county park. The headquarters building for the State WCTU was located at 801 8th Street and it was demolished by 1997 for a parking lot for the adjacent church. Therefore, this simple fountain is the best surviving property to best represent the history of the WCTU in Delaware.

⁷ Sarah F. Ward. "The White Ribbon Story: 125 Years of Service to Humanity" Evanston, Ill.: Signal Press, WCTU. 1999, p.156.

United States Department of the Interior
National Park Service

NATIONAL REGISTER OF HISTORIC PLACES
CONTINUATION SHEET

Section 8 Page 5

WCTU Temperance Fountain
name of property
Sussex County, Delaware
county and State

Comprehensive Planning

Zone: Coastal
Time Period: 1880-1940+/-: Urbanization and Early Suburbanization
Theme: Community Organizations/ Volunteer and Charitable
Architecture, Engineering and Decorative Arts/ Landscape Architecture
Property Type: Drinking Fountain

=====

9. Major Bibliographical References

=====

(Cite the books, articles, and other sources used in preparing this form on one or more continuation sheets.)

Previous documentation on file (NPS)

preliminary determination of individual listing (36 CFR 67) has been requested.

previously listed in the National Register

previously determined eligible by the National Register

designated a National Historic Landmark

recorded by Historic American Buildings Survey # _____

recorded by Historic American Engineering Record # _____

Primary Location of Additional Data

State Historic Preservation Office

Other State agency

Federal agency

Local government

University

Other

Name of repository: Delaware Historical Society

=====

10. Geographical Data

=====

Acreage of Property <1 acre

UTM References (Place additional UTM references on a continuation sheet)

| | Zone | Easting | Northing | Zone | Easting | Northing |
|---|-----------|---------------|----------------|------|---------|----------|
| 1 | <u>18</u> | <u>439406</u> | <u>4285325</u> | 3 | _____ | _____ |
| 2 | _____ | _____ | _____ | 4 | _____ | _____ |

See continuation sheet.

Verbal Boundary Description (Describe the boundaries of the property on a continuation sheet.)

Boundary Justification (Explain why the boundaries were selected on a continuation sheet.)

=====
11. Form Prepared By
=====

name/title Robin L. Krawitz, Historian
organization Delaware Division of Historical and Cultural Affairs
date February 21, 2008

street & number 21 The Green telephone (302) 736-7411

city or town Dover state Delaware zip code 19901

=====
Additional Documentation
=====

Submit the following items with the completed form:

Continuation Sheets

Maps

A USGS map (7.5 or 15 minute series) indicating the property's location.
A sketch map for historic districts and properties having large acreage
or numerous resources.

Photographs

Representative black and white photographs of the property.

Additional items (Check with the SHPO or FPO for any additional items)

=====
Property Owner
=====

(Complete this item at the request of the SHPO or FPO.)

name Gregory Ferrese, City Manager; City of Rehoboth Beach

street & number 229 Rehoboth Avenue telephone (302) 227-4641

city or town Rehoboth Beach state DE zip code 19971

=====
Paperwork Reduction Act Statement: This information is being collected for applications to the National Register of Historic Places to nominate properties for listing or determine eligibility for listing, to list properties, and to amend existing listings. Response to this request is required to obtain a benefit in accordance with the National Historic Preservation Act, as amended (16 U.S.C. 470 et seq.). A federal agency may not conduct or sponsor, and a person is not required to respond to a collection of information unless it displays a valid OMB control number.

Estimated Burden Statement: Public reporting burden for this form is estimated to range from approximately 18 hours to 36 hours depending on several factors including, but not limited to, how much documentation may already exist on the type of property being nominated and whether the property is being nominated as part of a Multiple Property Documentation Form. In most cases, it is estimated to average 36 hours per response including the time for reviewing instructions, gathering and maintaining data, and completing and reviewing the form to meet minimum National Register documentation requirements. Direct comments regarding this burden estimate or any aspect of this form to the Chief, Administrative Services Division, National Park Service, 1849 C St., NW, Washington, DC 20240.

United States Department of the Interior
National Park Service

NATIONAL REGISTER OF HISTORIC PLACES
CONTINUATION SHEET

Section 9 Page 1

WCTU Temperance Fountain
name of property
Sussex County, Delaware
county and State

BIBLIOGRAPHY

- “Annual Address of Mrs. M. Evelyn Killen, President, Delaware Women’s Christian Temperance Union at Fiftieth Annual Convention, Dover, Delaware.” Peoples Christian Church, Dover. October 16, 1929.
- “Annual Report of the Woman’s Christian Temperance Union of Delaware” 1892, 1893. Delaware Public Archives, Record Group 1501 Series 036, Records of the Delaware Industrial School for Girls.
- “Delaware Convention”, The Union Signal.
- For God and Home and Native Land. Minutes of the National Woman’s Christian Temperance Union, at the Tenth Annual Meeting in Detroit, Michigan, October 31 to November 3rd, 1883. Cleveland, OH: Home Publishing Company, 1883.
- Jacobsen, James E. Women’s Christian Temperance Union Public Fountain,(Shenandoah, Iowa) National Register of Historic Places nomination. 1984
- Osborne, Lori. Woman’s Christian Temperance Union Administration Building, (Evanston, Illinois) National Register of Historic Places nomination. 2002.
- Ward, Sarah F. The White Ribbon Story: 125 Year of Service to Humanity. Evanston, Ill.: Signal Press, Woman’s Christian Temperance Union, 1999.
- Weldin, Anna Downham. Background and History of Delaware Woman’s Christian Temperance Union. Typewritten booklet. c.1969. In pamphlet collection of the Historical Society of Delaware.
- Woman’s Christian Temperance Union. History from Web Site:
<http://www.wctu.org/fountains.html> captured on February 21, 2008.
<http://www.wctu.org/history.html> captured on February 21, 2008.

United States Department of the Interior
National Park Service

NATIONAL REGISTER OF HISTORIC PLACES
CONTINUATION SHEET

Section 10 Page 1

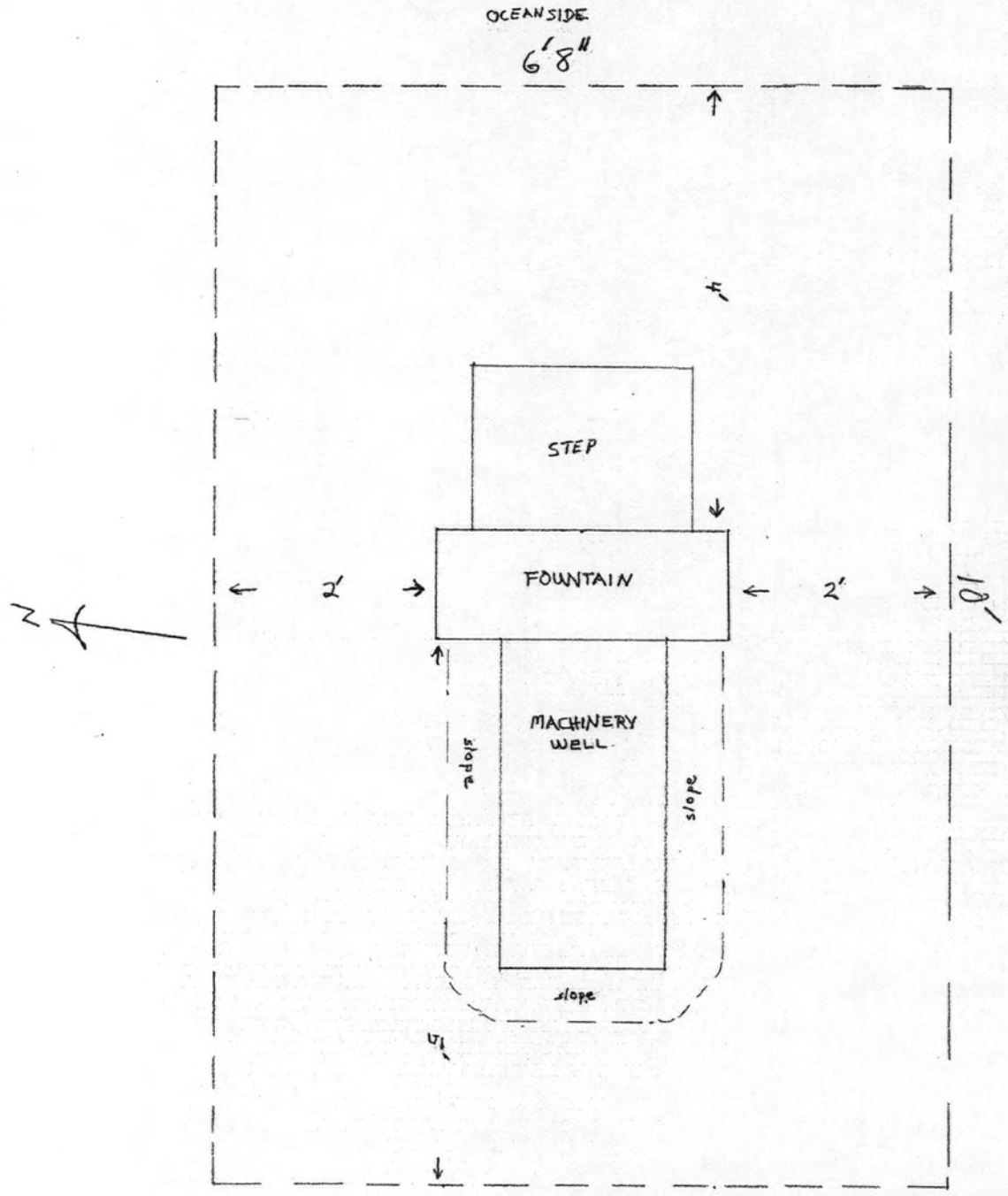
WCTU Temperance Fountain
name of property
Sussex County, Delaware
county and State

Boundary Description

The boundaries for the WCTU Temperance Fountain are measured from the stone foundation base, 5 feet to the east, 2 feet to the south, 4 feet to the east, and 2 feet to the north.

Boundary Justification

This boundary includes only the fountain and its working parts. Because the surrounding area of the boardwalk was completely rebuilt during 2007, this arbitrary boundary represents the minimum area containing the fountain without including any of the nearby modern signs and structures.



5-11237
 WCTU Fountain
 Rehoboth Beach, Delaware
 Boundary sketch
 Scale: 0 .5 1
 DHC - AHG
 March 2009

UNITED STATES DEPARTMENT OF THE INTERIOR
NATIONAL PARK SERVICE

NATIONAL REGISTER OF HISTORIC PLACES
EVALUATION/RETURN SHEET

REQUESTED ACTION: NOMINATION

PROPERTY NAME: Women's Christian Temperance Union Fountain

MULTIPLE
NAME:

STATE & COUNTY: DELAWARE, Sussex

DATE RECEIVED: 1/16/09
DATE OF 16TH DAY: 2/17/09
DATE OF WEEKLY LIST:

DATE OF PENDING LIST: 2/02/09
DATE OF 45TH DAY: 3/01/09

REFERENCE NUMBER: ~~08000956~~ 09000052

Appeal: N Data Problem: N Landscape: N Less than 50 Years: N
Other: N PDIL: N Period: N Program Unapproved: N
Request: Y Sample: N SLR Draft: N National: N

Comment Waiver: N

ACCEPT RETURN REJECT 2/28/2009 DATE

ABSTRACT/SUMMARY COMMENTS:

RECOM./CRITERIA Accept A

REVIEWER Patrick Andrews Discipline Historian

DATE 2/28/2009

DOCUMENTATION see attached comments Y/N see attached SLR Y/N

If a nomination is returned to the nominating authority, the nomination is no longer under consideration by the NPS



WCTU Fountain
Boardwalk

Rehoboth Beach, Sussex County, DE

Photo By: Robin Krawitz 12/2008

Setting of Fountain on Boardwalk, Facing NE

Photo 1 of 4



WCTU Fountain

Boardwalk

Rehoboth Beach, Sussex County, DE

Photo by: Robin Krawitz 12/2008

Front of Fountain, East Elevation, facing NW

Photo 2 of 4



WCTU Fountain

Boardwalk

Rehoboth Beach, Sussex County, DE

Photo by: Robin Krawitz 12/2008

Rear of fountain, West Elevation, Facing NE

Photo 3 of 4

ERECTED BY
• W • C • T • U •
REHOBOTH BEACH
1929

WCTU Fountain

Boardwalk

Rehoboth Beach, Sussex Co., DE

Photo by: Robin Krawitz 12/2008

Detail, Dedication Plaque on East Elevation
Facing West.

Photo 40F4



WCTU Fountain
Boardwalk @
Rehoboth Avenue
Rehoboth Beach,
Sussex County, DE
UTM:
18/439406/4285325

Produced by the United States Geological Survey
Control by USGS and NOS/NOAA
Compiled by photogrammetric methods from aerial photographs taken 1981. Field checked 1982. Map edited 1984
Selected hydrographic data compiled from NOS charts 12214 (1982) and 12216 (1981)
This information is not intended for navigational purposes
North American Datum of 1983 (NAD 83). Projection and 1000-meter grid: Universal Transverse Mercator, zone 18
10,000-foot grid ticks based on Delaware coordinate system of 1983
The difference between NAD 83 and North American Datum of 1927 (NAD 27) for 7.5-minute intersections is given in USGS Bulletin 1875. The NAD 27 is shown by dashed corner ticks
Gray tint indicates area in which only landmark buildings are shown
There may be private inholdings within the boundaries of the National or State reservations shown on this map

UTM GRID and 1991 MAGNETIC NORTH DECLINATION AT CENTER OF SHEET
Revisions compiled in cooperation with State of Delaware agencies from aerial photographs taken 1989 and other sources
Contours not revised. This information not field checked. Map edited 1991

SCALE 1:24 000
KILOMETERS 0 1 2
METERS 0 1000 2000
MILES 0 1 2
FEET 0 1000 2000 3000 4000 5000 6000 7000 8000 9000 10000
CONTOUR INTERVAL 5 FEET
NATIONAL GEODETIC VERTICAL DATUM OF 1929 (NGVD)
(TO CONVERT ELEVATIONS TO THE NORTH AMERICAN VERTICAL DATUM OF 1988, SUBTRACT 1 FOOT)
DEPTH CURVES AND SOUNDINGS IN FEET - DATUM IS MEAN LOW WATER
THE RELATIONSHIP BETWEEN THE TWO DATUMS IS VARIABLE
SHORELINE SHOWN REPRESENTS THE APPROXIMATE LINE OF MEAN HIGH WATER
THE MEAN RANGE OF TIDE IS APPROXIMATELY 0.5 FEET IN REHOBOTH BAY AND 3.9 FEET ALONG THE OCEAN
THIS MAP COMPLIES WITH NATIONAL MAP ACCURACY STANDARDS
FOR SALE BY U.S. GEOLOGICAL SURVEY, DENVER, COLORADO 80225 OR RESTON, VIRGINIA 22092
A FOLDER DESCRIBING TOPOGRAPHIC MAPS AND SYMBOLS IS AVAILABLE ON REQUEST

ROAD CLASSIFICATION
Primary highway, hard surface Light-duty road, hard or improved surface ...
Secondary highway, hard surface Unimproved road ...
Interstate Route U. S. Route State Route
REHOBOTH BEACH, DEL.
38075-F1-TF-024
1984
REVISED 1991
DMA 5961 II NE-SERIES V832

State of Delaware
Historical and Cultural Affairs

21 The Green
Dover, DE 19901-3611

Phone: (302) 736.7400

Fax: (302) 739.5660

January 14, 2009



Dr. Janet Snyder Matthews, Keeper
National Register of Historic Places
National Park Service 2280
1201 "I" (Eye) Street, N.W.
Washington D.C. 20005

Dear Dr. Matthews:

Enclosed please find the following nominations for listing on the National Register of Historic Places:

John Carney Agricultural Complex, Greenville Vicinity, New Castle County, DE
Rosemont, 15 ½ Cragmere Road, Brandywine Hundred, New Castle County, DE
Woman's Christian Temperance Union Fountain, Rehoboth Beach, Sussex County, DE

If there are any questions regarding these documents, please contact Joan Larrivee, Architectural Historian for the Delaware State Historic Preservation Office at (302) 736-7400.

Sincerely,

A handwritten signature in black ink, appearing to read "Stephen Marz".

Stephen Marz, Deputy Director
Delaware Division of Historical and Cultural Affairs
and Deputy State Historic Preservation Officer

Enclosures



State of Delaware
Historical and Cultural Affairs

21 The Green
Dover, DE 19901-3611

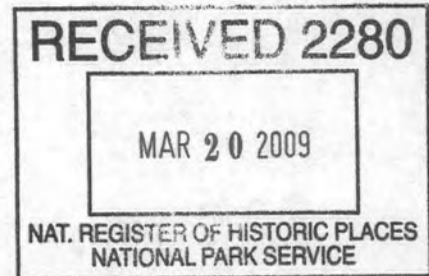
Phone: (302) 736.7400

Fax: (302) 739.5660

March 19, 2009

Mr. Patrick Andrus
National Register of Historic Places
National Park Service 2280
1201 "I" (Eye) Street, N.W.
Washington D.C. 20005

09000052



RE: Boundary Descriptions for Rosemont and WCTU Fountain

Dear Patrick:

I am enclosing the verbal boundary descriptions and justifications (Section 10) for Rosemont in New Castle County and for the Women's Christian Temperance Fountain in Rehoboth Beach. Also enclosed is a drawing of the boundary for the WCTU Fountain. This material has been previously faxed to you but is now being formally submitted on acid free paper. Thank you for being patient with us as we adjust to not having Robin here to handle matters related to National Register Program issues and responsibilities!

If you have questions, please contact me. I can be reached at joan.larrivee@state.de.us or 302-736-7406.

Sincerely,


Joan N. Larrivee
Architectural Historian

