



TWIN PRODUCTS

NASHUA NH

Nashua Manufacturing Company Historic
District
Factory and Pine Streets
Nashua, NH

Photo by: Peter Stott
Neg. at: ACT for MA, 45 School St.,
Boston, MA 02108

View looking northeast towards facade of
Mill #1 (#1)

Date: 7/86 Photo 1 of 22



Nashua Manufacturing Company Historic
District
Factory and Pine Streets
Nashua, NH

Photo by: Margo Webber
Neg. at: 136 Ridge Ave., Newton, MA 02159

View looking north towards south eleva-
tions of Mills #2, #3, and #4 (#2, 3, 4)

Date: 9/86 Photo 2 of 22



Nashua Manufacturing Company Historic
District
Factory and Pine Streets
Nashua, NH

Photo by: Peter Stott
Neg. at: ACT for MA, 45 School St.,
Boston, MA 02108

View looking east towards west and south
elevations of Mill #4 (#4) and facade of
Mill #3 (#3) at right

Date: 7/86 Photo 3 of 22



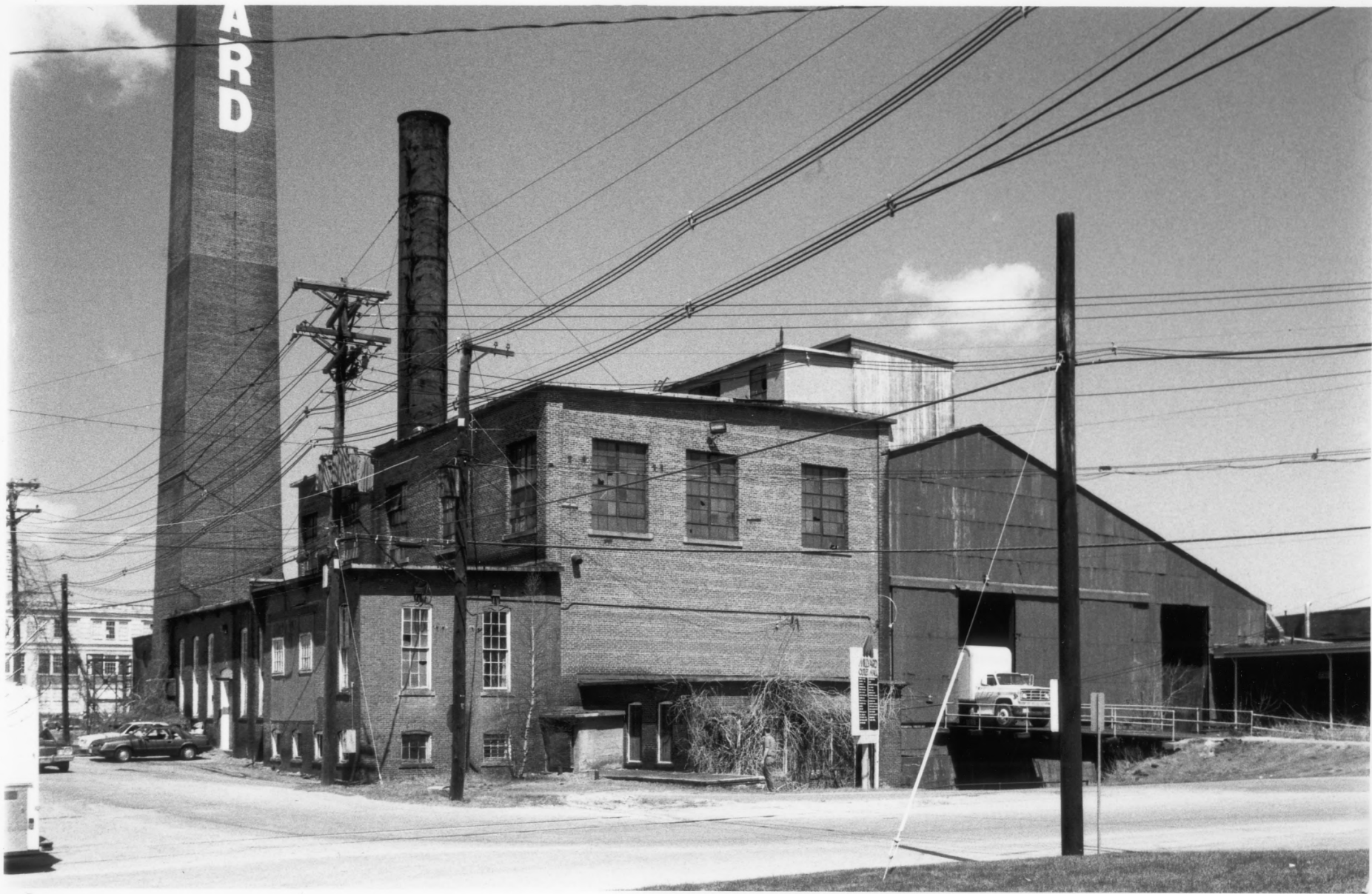
Nashua Manufacturing Company Historic
District
Factory and Pine Streets
Nashua, NH

Photo by: Peter Stott
Neg. at: ACT for MA, 45 School St.,
Boston, MA 02108

View looking northeast towards south ele-
vation of Picker Building (#5). Edge of
Cotton House (#6) is visible at left.

Date: 7/86

Photo 4 of 22



Nashua Manufacturing Company Historic
District
Factory and Pine Streets
Nashua, NH

Photo by: Peter Stott
Neg. at: ACT for MA, 45 School St.,
Boston, MA 02108

View looking northeast towards west and
south elevations of Boiler House (#7).

Date: 7/86

Photo 5 of 22



Nashua Manufacturing Company Historic
District
Factory and Pine Streets
Nashua, NH

Photo by: Peter Stott
Neg. at: ACT for MA, 45 School St.,
Boston, MA 02108

View looking north towards Truss Bridge
(#28) and south elevation of North Cotton
Storehouse (#8).

Date: 4/86 Photo 6 of 22



Nashua Manufacturing Company Historic
District
Factory and Pine Streets
Nashua, NH

Photo by: Margo Webber

Neg. at: 136 Ridge Ave., Newton, MA 02159

View looking northwest towards south facade
of Bleachery and Dyehouse (#9). The 1919
Dyehouse (not shown) is at the east end of
this structure.

Date: 10/86

Photo 7 of 22



Nashua Manufacturing Company Historic
District
Factory and Pine Streets
Nashua, NH

Photo by: Margo Webber
Neg. at: 136 Ridge Ave., Newton, MA 02159

View looking southeast towards north and
west elevations of small office building
(#30).

Date: 12/86

Photo 8 of 22



Nashua Manufacturing Company Historic
District
Factory and Pine Streets
Nashua, NH

Photo by: Peter Stott
Neg. at: ACT for MA, 45 School St.,
Boston, MA

View looking southeast towards north and
west elevations of Repair Shops and Cloth
Room (#10).

Date: 4/86

Photo 9 of 22



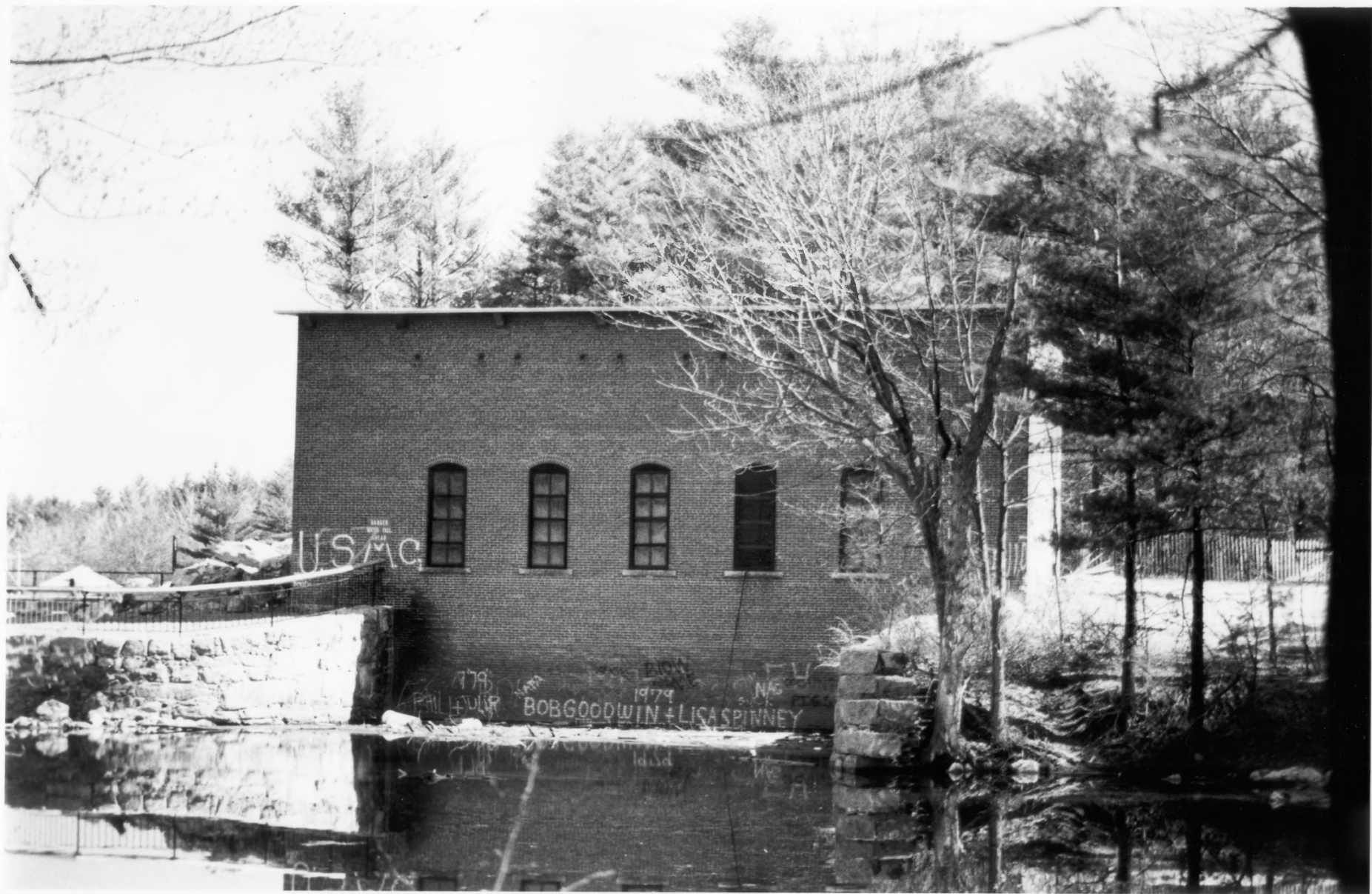
Nashua Manufacturing Company Historic
District
Factory and Pine Streets
Nashua, NH

Photo by: Peter Stott
Neg. at: ACT for MA, 45 School St.,
Boston, MA

View looking southwest towards north end
of Power Canal (#11) and Storehouse #2 (13).

Date: 4/86

Photo 10 of 22



Nashua Manufacturing Company Historic
District
Factory and Pine Streets
Nashua, NH

Photo by: Peter Stott
Neg. at: ACT for MA, 45 School St.,
Boston, MA

View looking north towards south elevation
of Mine Falls Gatehouse (#12).

Date: 4/86

Photo 11 of 22



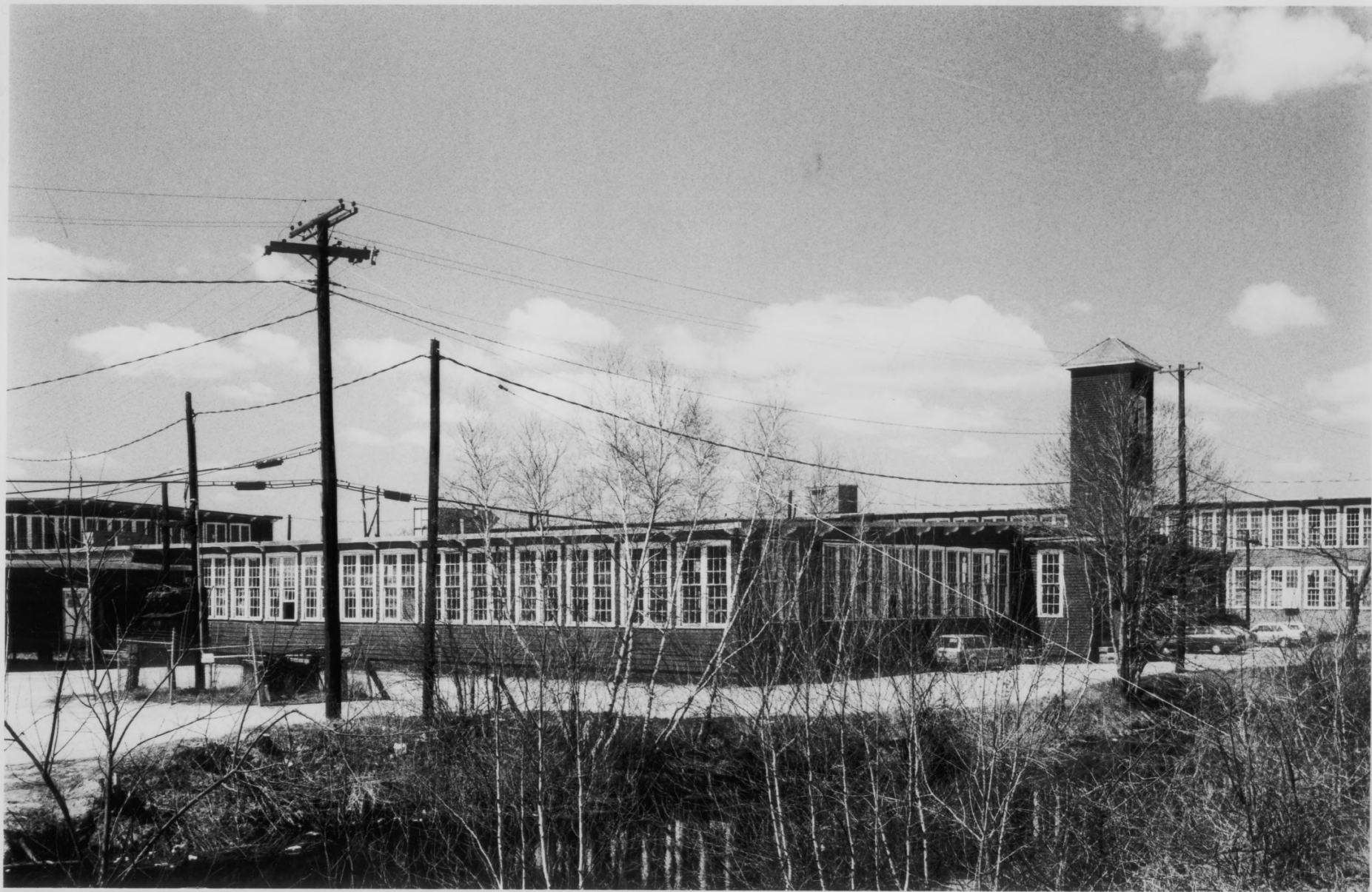
Nashua Manufacturing Company Historic
District
Factory and Pine Streets
Nashua, NH

Photo by: Margo Webber
Neg. at: 136 Ridge Ave., Newton, MA 02159

View looking north towards east elevation
of Mill #5 (#19) with Wastehouse (#15)
at right.

Date: 10/86

Photo 12 of 22



Nashua Manufacturing Company Historic
District
Factory and Pine Streets
Nashua, NH

Photo by: Peter Stott
Neg. at: ACT for MA, 45 School St.,
Boston, MA

View looking northwest towards south and
east sides of Mill #6 Annex (#18), with
south elevation of Mill #6 (#17) at right.

Date: 4/86

Photo 13 of 22



Nashua Manufacturing Company Historic
District
Factory and Pine Streets
Nashua, NH

Photo by: Peter Stott
Neg. at: ACT for MA, 45 School St.,
Boston, MA

View looking north towards Mill #6 Annex
(#18) and West Auto House (#23).

Date: 4/86

Photo 14 of 22



Nashua Manufacturing Company Historic
District
Factory and Pine Streets
Nashua, NH

Photo by: Margo Webber
Neg. at: 136 Ridge Ave., Newton, MA 02159

View looking northwest towards east facade
of Company Office (#21) and south elevation
of Mill #7 (#22).

Date: 10/86

Photo 15 of 22



 **MILLIARD**
OUTLET MALL →

NABHA MANUFACTURING COMPANY
INCORPORATED 1898
BLANKETS - COTTON - FLANNELS



Nashua Manufacturing Company Historic
District
Factory and Pine Streets
Nashua, NH

Photo by: Peter Stott
Neg. at: ACT For MA, 45 School St.,
Boston, MA

View looking southwest towards east and
north elevations of Mill #7.

Date: 4/86

Photo 16 of 22



Nashua Manufacturing Company Historic
District
Factory and Pine Streets
Nashua, NH

Photo by: Peter Stott
Neg. at: ACT for MA, 45 School St.,
Boston, MA

View looking northwest towards south and
east elevations of South Cotton Store-
house (#27).

Date: 4/86

Photo 17 of 22



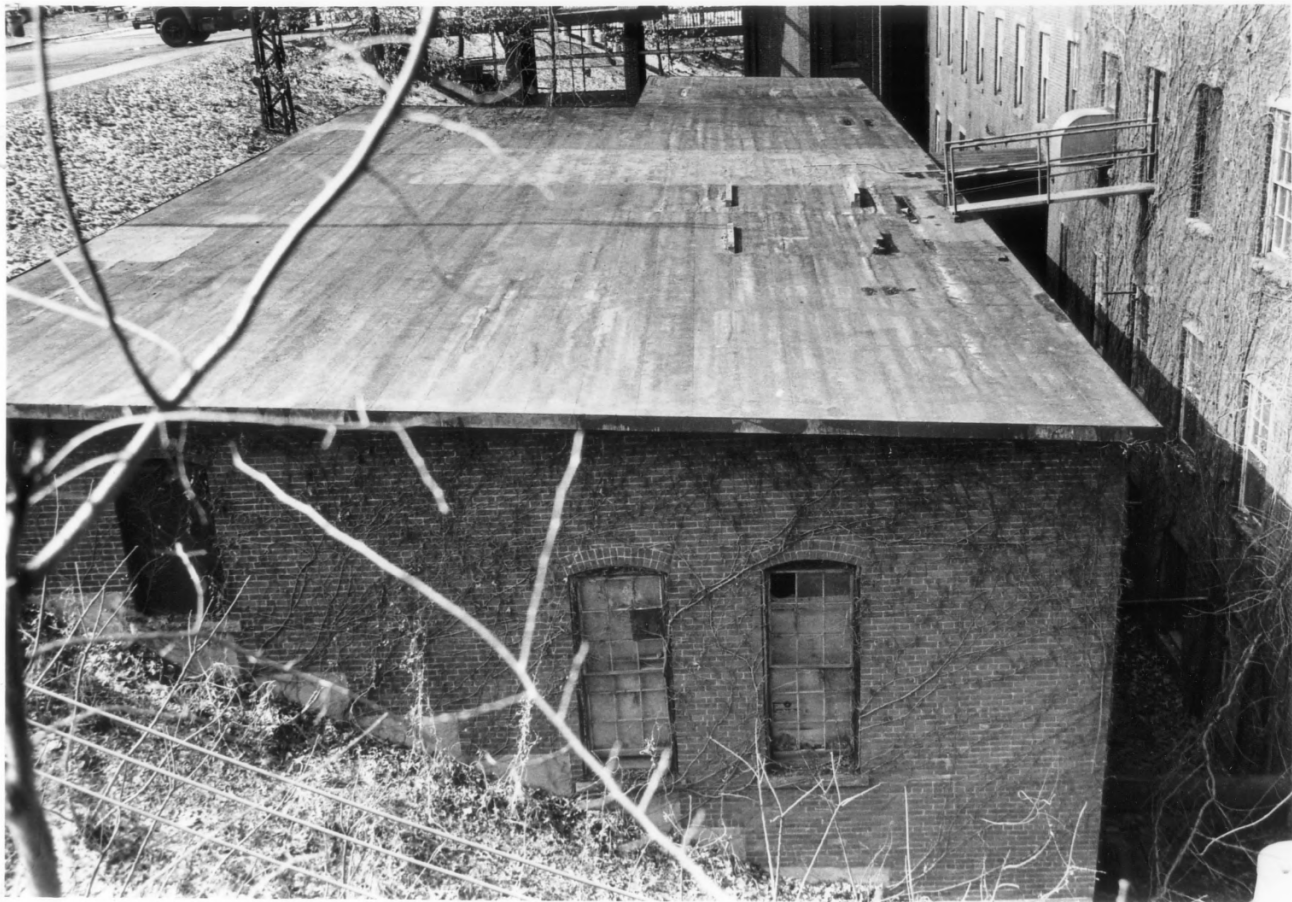
Nashua Manufacturing Company Historic
District
Factory and Pine Streets
Nashua, NH

Photo by: Peter Stott
Neg. at: ACT for MA, 45 School St.,
Boston, MA

View looking northwest towards East Auto
House (#24) with Cloth Room (#10) at left
and Mill #2(#2) at right.

Date: 4/86

Photo 18 of 22



Nashua Manufacturing Company Historic
District
Factory and Pine Streets
Nashua, NH

Photo by: Peter Stott
Neg. at: ACT for MA, 45 School St.,
Boston, MA

View looking west at east elevation of
Wheelhouse (#25) with Mill #3 (#3) at right.

Date: 4/86

Photo 19 of 22



Nashua Manufacturing Company Historic
District
Factory and Pine Streets
Nashua, NH

Photo by: Peter Stott
Neg. at: ACT for MA, 45 School St.,
Boston, MA

View looking northwest towards south ele-
vation of Storehouse #4 (#14).

Date: 4/86.

Photo 20 of 22



OFFICE BUILDING

NE

OFFICE
Building
for RENT
883-7921

PRYOR

Nashua Manufacturing Company Historic
District
Factory and Pine Streets
Nashua, NH

Photo by: Margo Webber
Neg. at: 136 Ridge Ave., Newton, MA 02159

View looking northwest towards east ele-
vation of NNH Foundation office building
(A) with Mill #2 (#2) at right.

Date: 10/86

Photo 21 of 22



Nashua Manufacturing Company Historic
District
Factory and Pine Streets
Nashua, NH

Photo by: Peter Stott
Neg. at: ACT for MA, 45 School St.,
Boston, MA 02109

View looking east towards southwest and
southeast elevations of Warehouse #2 (#13)
and Dust Collector (C) at right end.

Date: 4/86

Photo 22 of 22