

United States Department of the Interior
National Park Service

National Register of Historic Places
Registration Form



This form is for use in nominating or requesting determinations for individual properties and districts. See instructions in How to Complete the National Register of Historic Places Registration Form (National Register Bulletin 16A). Complete each item by marking "x" in the appropriate box or by entering the information requested. If any item does not apply to the property being documented, enter "N/A" for "not applicable." For functions, architectural classification, materials, and areas of significance, enter only categories and subcategories from the instructions. Place additional entries and narrative items on continuation sheets (NPS Form 10-900a). Use a typewriter, word processor, or computer, to complete all items.

1. Name of Property

historic name Island Grove Park National Register District
other names/site number _____

2. Location

street & number Park Avenue _____ not for publication
city or town Abington _____ vicinity
state Massachusetts code MA county Plymouth code 023 zip code 02351

3. State/Federal Agency Certification

As the designated authority under the National Historic Preservation Act of 1986, as amended, I hereby certify that this nomination request for determination of eligibility meets the documentation standards for registering properties in the National Register of Historic Places and meets the procedural and professional requirements set forth in 36 CFR Part 60. In my opinion, the property meets does not meet the National Register Criteria. I recommend that this property be considered significant nationally statewide locally. (See continuation sheet for additional comments.)

Brona Simon DSHPO January 9, 2002
Signature of certifying official/Title Brona Simon, Deputy State Historic Preservation Officer Date
Massachusetts Historical Commission

State or Federal agency and bureau

In my opinion, the property meets does not meet the National Register criteria. (See continuation sheet for additional Comments.)

Signature of certifying official/Title _____ Date _____
State or Federal agency and bureau _____

4. National Park Service Certification

I, hereby certify that this property is:
 entered in the National Register
 See continuation sheet,
 determined eligible for the National Register
 See continuation sheet.
 determined not eligible for the National Register
 removed from the National Register
 other (explain): _____

for
Signature of the Keeper Edson H. Beall Date of Action 3/6/02

Island Grove Park HD
Name of Property

Plymouth, MA
County and State

5. Classification

Ownership of Property

(Check as many boxes as apply)

(Check only one box)

- private
- public-local
- public-State
- public-Federal
- building(s)
- district
- site
- structure
- object

Number of Resources within Property

(Do not include previously listed resources in the count.)

Contributing	Noncontributing	
3	1	building
3		sites
13	2	structures
3	5	objects
22	8	Total

Name of related multiple property listing
(Enter "N/A" if property is not part of a multiple property listing.)

n/a

Number of contributing resources previously listed in the National Register

0

6. Function or Use

Historic Functions

(Enter categories from instructions)

- Recreation/Culture: park, amusement park,
- Commemorative marker
- Landscape: park
- Funerary: cemetery
- Industry: manufacturing facility, dam
- Transportation: bridge
- Social: abolition meeting place

Current Functions

(Enter categories from instructions)

- Recreation/Culture: park, commemorative marker
- Landscape: park
- Funerary: cemetery
- Transportation: bridge

7. Description

Architectural Classification

(Enter categories from instructions)

- Beaux Arts (Memorial Arch)
- Craftsman (Buildings)

Materials

(Enter categories from instructions)

- foundation
- walls fieldstone, wood, bronze
- concrete, iron
- roof
- other

Narrative Description

(Describe the historic and current condition of the property on one or more continuation sheets.)

United States Department of the Interior
National Park Service

National Register of Historic Places Continuation Sheet

Island Grove Park HD
Abington (Plymouth), MA

Section number 7 Page 1

Island Grove Park National Register District Section 7 Description

Introduction

The Island Grove Park National Register District is focused on the scenic, 17.22-acre, upland peninsula that juts into the east side of Island Grove Pond. It also encompasses the 35-acre pond and narrow wedges of land on its western and northern shores. The pond was created ca. 1700 when the Shumatuscancant River was dammed to power the first of several industries in the area. The district boundaries are the same as those of the municipal park.

The upland neck which forms the core area of Island Grove Park is surrounded by water on three sides, imparting the look and feel of an island and giving rise to the name "Island Grove" in the 19th century. High elevations and irregular terrain characterize the northwestern half of the park while the southeast end is low and level and terminates in a small knob. Responding to these facts of topography, activity over time has been concentrated on the southern half while the northern half is devoted primarily to footpaths. The entire area is wooded, primarily with pines. While the trees and other vegetation have been replaced over time, the character remains essentially the same as that described in the mid-19th century and photographed in the early 20th century. For example:

"We could not but be impressed anew with the beauty of the spot. The Grove itself, nearly surrounded by its picturesque sheet of water, the tall pines extending to the water's edge, the soft dry carpeting formed by innumerable needle-like spires shed by the pine-trees, the slight swaying and murmur of their branches in the wind, the graceful boats moving swiftly before the breeze, were all features of the scene before us, and seemed to welcome us to the duties, the hopes, and pleasures of the day." (*The Liberator* 8/8/1856)

The scenic, wooded landscape and adjacent pond are the primary character-defining elements of both park and NR district. Buildings, structures, and objects play more discrete supporting roles except in the case of the Memorial Bridge (NR map #5) and Arch (NR map #6) which provide a grand and highly visible approach to the park from the west. Most other contributing elements are small, simply designed, wood-frame, and exhibit one or more elements of the rustic Craftsman style. These characteristics complement the predominant natural character of the area.

(continued)

United States Department of the Interior
National Park Service

National Register of Historic Places
Continuation Sheet

Island Grove Park HD
Abington (Plymouth), MA

Section number 7 Page 2

Both the Island Grove National Register district and Island Grove Park are part of the block bounded by Central Street (N), Park Avenue (E), Centre Avenue (S), and Washington Street (W). The remainder of the block is developed with residences that date to the 18th, 19th, and 20th centuries. Many are located on small side streets (Wilson Place, Chapel Street, Cliff Street, and Lake Street off Washington Street; Pond and Reed Streets off Park Avenue; and Cottage, Quincy, and Granite Streets off Centre Avenue). The oldest houses are found on Washington Street where they are interspersed with 19th and 20th century neighbors. Most of the houses directly surrounding the pond date to the 19th century. Some are picturesque mid-19th century cottages that seem to indicate an early appreciation for the scenic qualities of the area. Houses of all periods are typically small-to-medium scale wood-frame structures set on small to medium size lots. Central Street stands in contrast to the others. The north side is the site of Abington's Department of Public Works, Recreation Department, and Police Station. The south side is undeveloped providing passersby with unobstructed views of the pond and park. The old Town Hall where some abolition meetings were held remains at the corner of Washington and Central Streets. Railroad tracks run parallel to the east side of Park Avenue behind a tall wooden barrier. The northern half of the strip between the tracks and the road is wooded, thus visually extending the character of the park. All privately owned property is excluded from the district, which is focused exclusively on the park and the activities that occurred there.

The district contains 30 resources, none of which are currently listed on the National Register. This number includes 22 contributing resources (3 buildings, 3 sites, 13 structures, and 3 objects) and 8 non-contributing resources (1 building, 2 structures, 5 objects). The district retains a high level of integrity to the end of the period of significance (1951), despite some losses and minor alterations to extant features.

Integrity

Island Grove Park has encompassed a succession of important uses over time. Those uses include

- 18th century industry and burial place,
- early to mid-19th century Abolitionist meeting site,
- mid to late 19th century amusement park, and
- late 19th to 20th century municipal park.

The district retains a strong sense of its appearance during the period of significance which extends from the 1840s when the abolitionist meetings were held there through 1951. The two most prominent

(continued)

United States Department of the Interior
National Park Service

National Register of Historic Places Continuation Sheet

Island Grove Park HD
Abington (Plymouth), MA

Section number 7 Page 3

features of the district -- pond and peninsula -- appear remarkably like they did in late 19th and early 20th century photographs. The predominant character is that of a natural area that has been slightly enhanced for public use. Later features, including recreational facilities and commemorative elements, are generally subordinate to the natural character of the area which consists of wooded uplands and adjacent shallow pond. While most extant elements date to the early 20th century, specific traces of prior uses remain as well including Island Grove Pond, Lighthouse Rock, and the Central Burial Place, all of which date to the 18th and 19th centuries.

According to the Massachusetts guide published by the Works Progress Administration in 1938 "Island Grove Park, Wilson Place, off Washington St. remains very much in its natural state, its wild beauty enhanced by a pond. Anti-slavery and temperance meetings held beneath the shelter of its majestic old trees, were addressed by Webster, Garrison, Sumner, Phillips, Andrew, and many other stirring orators." (*WPA Guide: 627*)

Landscapes and Site Elements

The two key features of the park are the peninsula, which forms the primary land mass of the park and the adjacent pond. The area was initially upland with adjacent water meadow before the Shumatuscacant River was dammed ca. 1700, creating the pond now known as Island Grove Pond (NR map #26). The pond has been a central feature of the area for over 300 years. The peninsula is characterized by irregular topography, particularly its rugged northwestern half, which rises steeply from the pond. The more gently sloping southern end was chosen as the site for abolitionist meetings (NR map #24) because of a dramatic natural amphitheater located there. Slightly north of the amphitheater is a natural declivity known as the Sugar Bowl (NR map #27). Other topographic modifications have included construction of low retaining walls (NR map #8) around steep and heavily-used portions of the pond during the early part of the 20th century and creation of a drainage culvert (NR map #14) between the pond and Park Avenue in the 1930s.

Vegetation is central to the identity of Island Grove Park. Much of its appeal during the 19th century and today is the grove of mature white pines (NR map #17) that covers most of the peninsula, creating a tall canopy with minimal understory. While white pines are the predominant species, they are interspersed in certain areas with varied deciduous species and a limited number of ornamentals around the Memorial Arch (NR map #6). The lower elevations near the Girl Scout Cabin (NR map #1) are covered with ferns,

(continued)

United States Department of the Interior
National Park Service

National Register of Historic Places Continuation Sheet

Island Grove Park HD
Abington (Plymouth), MA

Section number 7 Page 4

and there is understory on the steep slopes at the northern edge of the peninsula. Most of the current trees date to the late 1930s when extensive replanting was undertaken to restore the devastation of the 1938 hurricane.

The minimal circulation system (NR map #15, 16) consists of two unpaved single-lane roads entering the peninsula from Park Avenue. Both roads lead to the Swimming Pond area (NR map #11). The north entrance road follows the high ground of the peninsula while the south entrance road passes by the Storage/Recreation Shed (NR map #2) in the lower-lying portion of the peninsula. Cars are prohibited from the park except for staff and handicapped access. There is no formal parking area. The few vehicles on site are accommodated between trees. There are informal dirt footpaths throughout the peninsula, especially around the water edge and in heavily used areas such the southern point. One small steep segment adjacent to the arch has been paved with asphalt. Access from the west is via the Memorial Bridge, which crosses the pond at its narrow point, connecting the peninsula with Wilson Place and Lake Street to the west. The bridge, built in 1912, replaces an earlier causeway and ferry.

Island Grove Pond (ca. 1836; NR map #26; photos #1, 2)

Island Grove Pond is a manmade body of water with an irregular shape that encompasses approximately 35 acres. It was created ca. 1700 by damming the Shumatuscacant River to power Nash's sawmill. For more than 130 years, the pond was roughly the shape of a teardrop, appearing in that form on the 1830 map of Abington. The pond was enlarged to its current shape and size in 1836, when water levels were raised to accommodate additional industries.

On the east side, the pond embraces Island Grove Park, a wooded peninsula of varied terrain. The Pond is bordered by steep, wooded slopes at the north and northwest ends of the peninsula. On the south and southeast, the shore rises gently. The entire low-lying, southern half of the peninsula, below the Memorial Bridge (NR map #5) and the Swimming Pond (NR map #11), was lined by mortared stone walls (NR map #8) with concrete coping in the early 20th century. A similar wall (NR map #8) was constructed on the west bank of the pond, south of the bridge.

(continued)

United States Department of the Interior
National Park Service

National Register of Historic Places Continuation Sheet

Island Grove Park HD
Abington (Plymouth), MA

Section number 7 Page 5

Park Borders

Island Grove Park occupies a long, narrow, upland peninsula that is entirely surrounded by water on the south and west sides and partially surrounded on the north and east. This creates the look and feel of an island and gave rise to the name "Island Grove" in the 19th century when its recreational opportunities began to be explored. The Park Avenue edge of the park, where the park adjoins the mainland, is marked by a low, wooden log fence. Granite gate posts (NR map #13) that measure approximately 4' in height and 1.5' in width define the two entrances on the east side of the park. They open onto unpaved roads that lead to the Swimming Pond (NR map #11) area. The northerly posts have a rough surface with smooth edges and pyramidal caps. The south posts are untooled. Iron hardware on both indicate the former presence of early gates. The early gates have been replaced by modern steel gates set immediately behind the granite posts.

The park also includes a small wedge of land on Lake Street between Wilson Place and Chapel Street. This edge is marked by a low, wooden log fence, similar to that on Park Avenue (NR map #12). Early 20th century stone walls (NR map #7) at the west end of the Memorial Bridge (NR #5) are described below as part of the bridge.

A chain link fence defines the park boundary where it abuts private residences on Park Avenue near the storage/recreation shed.

Lighthouse Rock (NR map #21)

Lighthouse Rock is a large granite boulder of irregular shape that is located immediately southwest of Memorial Bridge (NR map #5). It contains two holes that defined the allowable high water lines at various times.

Central Burying Ground (mid 18th century; NR map #25)

The mid 18th century Central Burying Ground lies west of the northerly Park Avenue entrance to the park on high ground overlooking Island Grove Pond. The only visible remains today are two low headstone stumps. The headstones were moved to Abington's Mount Vernon Cemetery after the Hurricane of 1938 ravaged the area.

(continued)

United States Department of the Interior
National Park Service

National Register of Historic Places Continuation Sheet

Island Grove Park HD
Abington (Plymouth), MA

Section number 7 Page 6

Drainage System (1931-34; NR map #14)

A holding pool just south of the Girl Scout Cabin (NR map #1) is part of a drainage system for this low-lying area. It is connected to a culvert that runs northeast to the park boundary at Park Avenue. That termination point is marked by a tall, mortared, fieldstone retaining wall that rises well above street level. Both the holding pond and culvert are lined by stone and concrete walls. A small concrete bridge crosses the culvert near the Girl Scout Cabin. The system is used intermittently in response to overflow in surrounding areas.

Buildings, Structures, and Monuments

All but one of the primary buildings and structures within the district date to the first half of the 20th century and contribute to its historical significance. All of the early buildings are small scale, wood-frame structures of simple design that exhibit one or more elements of the rustic Craftsman style that was so popular for recreational areas of that period. Defining elements seen on these buildings include exposed rafter ends and uncut fieldstone foundations. These common elements of scale, materials, and style provide a sense of unity and complement the scenic wooded landscape that defines the character of the park. All of the buildings, structures, and monuments are in generally good condition with few obvious alterations other than asphalt shingle roofs on the buildings. Two are currently unused and boarded up (Bandstand, NR map #9 and Girl Scout Cabin, NR map #1). The exception to the general building character described above is the recent bath house (NR map #4). It maintains the small scale but is constructed of concrete.

Bandstand (1920; NR map #9; photo #2)

The base of an early 20th-century bandstand overlooks Island Grove Pond from the southwestern tip of the park. The five-sided structure consists of mortared fieldstone walls that rise approximately six feet to a concrete deck. Metal pins at the five corners are all that remain of the railing that once encircled the deck. A plain wooden door with three strap iron hinges occupies the north elevation, while small windows (now filled with concrete block) are set high on southwest and northeast faces. The interior once contained changing rooms for swimmers. The rustic appearance of the bandstand base complements the historic character of the park.

(continued)

United States Department of the Interior
National Park Service

National Register of Historic Places Continuation Sheet

Island Grove Park HD
Abington (Plymouth), MA

Section number 7 Page 7

Refreshment Stand (1931; NR map #3; photo #2)

A small, wood-frame Refreshment Stand is located near the edge of the pond between the Memorial Bridge and the Bandstand. It is designed in a very simple version of the rustic Craftsman style which is in keeping with its wooded site. The stand is built on a rectangular plan and rises one story to a hipped roof with exposed rafter ends and a covering of asphalt shingles. Exterior walls are covered with vertical boarding. Large, rectangular openings with chamfered upper corners are located on the front and side elevations allow for customer service. Wooden shutters that swing up into the stand allow for closure when the stand is not in use. A single, plain, wooden door on the rear elevation (west) provides worker access.

Gazebo (1893; Rustic style; NR map #10; photo #5)

The Gazebo is an octagonal, wood-frame structure that stands in the pine grove at the southwestern end of the Abolitionist meeting area. It consists of plain wooden posts that rise to an eight-sided roof covered with asphalt shingles. The bases of the posts are linked by a simple board railing while the tops are joined by segmental arched valances of vertical boarding. Regular maintenance has replaced most of the original materials of this open air structure over time, but its design remains true to that seen in historic views.

Girl Scout Cabin (ca. 1950; Craftsman elements; NR map #1)

The Girl Scout Cabin is a small wood-frame structure of rectangular plan under a low, overhanging gable roof without exposed rafter ends or gutters. Walls are covered with rustic "free-edge" clapboarding with plain fascia and cornerboards, all stained dark brown. The foundation is concrete and the roof is covered with asphalt shingles. All elevations are three bays. On the west facade and south side, entrances occupy the center bays with single windows in the outer bays. The north side contains three windows. An exterior chimney is centered on the rear elevation where it is flanked by two windows. All windows are currently boarded. This building was in place by 1951 according to Town Reports. Its Craftsman-style detail is more typical of buildings from the early to mid 20th century.

Storage/Recreation Shed (ca. 1950; Craftsman elements; NR map #2)

The Storage/Recreation Shed is a wood-frame structure built on a long rectangular plan. It rises one

(continued)

United States Department of the Interior
National Park Service

National Register of Historic Places Continuation Sheet

Island Grove Park HD
Abington (Plymouth), MA

Section number 7 Page 8

story from a concrete foundation to an overhanging gable roof with exposed rafter ends but without gutters. The roof is covered with asphalt shingles. Walls are covered with wood shingles except on the north elevation and the north end of the rear (east) elevation where vertical boarding appears. The walls are stained dark brown and are trimmed with plain fascia and cornerboards that are painted white. A concrete chimney rises along the exterior of the south side wall. A large opening with overhead door is north of center on the west facade. Two windows are located south of the entrance and one to the north. All are set high on the wall and are currently boarded. The north end contains a pedestrian entry with a plain wooden door. A square attic opening is equipped with a hinged door of vertical boards. Three more boarded windows are placed high on the rear wall.

Memorial Bridge (1912; MHC #926; NR map #5; photo #1)

The Memorial Bridge, along with the Arch at its eastern end, provides a grand entrance to Island Grove Park from the west. The bridge spans the center of Island Grove Pond from the park to the west shore of the pond at Lake Street and Wilson Place. The bridge consists of a concrete deck rising from closely spaced concrete piers. The deck is surmounted by iron railings with narrow square posts that rise from a flat lower member to a large round upper hand rail. Intermediate supports are also round. The western end of the bridge is extended by mortared stone walls (approximately 3' high by 1.5' wide) reaching out to Wilson Street, which is in line with the bridge. The walls are terminated by stone posts, approximately 5' tall and 4' square. The shorter south wall takes the form of a semi-circle. The longer north wall is hooked at the east end (closest to the bridge). The entire structure, including walls, is 300' long.

Memorial Arch (1912; Classical Revival; MHC #926; NR map #6; photo #4)

The Memorial Arch marks the eastern terminus of the Memorial Bridge, where it provides a grand entrance to Island Grove Park. Two flights of five steps each with intermediary landings lead from bridge to arch. The stairs are framed by low concrete walls. Constructed of concrete, the arch rises 50' above the water. It is modeled on the classical triumphal or memorial arch form, although with more vertical proportions. Typically, it consists of a round-arched opening framed by wide piers that rise to a cove cornice and solid parapet. A large cartouche is centered on the cornice above the arch. A central panel on the parapet is inscribed "Abington to her sons who offered their lives for the Union 1861-1865." Above is the most dramatic element of the composition: an 11-foot bronze eagle with upraised

(continued)

United States Department of the Interior
National Park Service

National Register of Historic Places Continuation Sheet

Island Grove Park HD
Abington (Plymouth), MA

Section number 7 Page 9

wings. Life-size bronze figures in bas-relief appear on the piers facing the water. They represent a soldier and a sailor of the Civil War. The soldier carries a gun while the sailor is drawing his sword. They stand on bases that say "The Army 1861" and "The Navy 1861" respectively. The east inland side of the arch is undecorated. The bronzework was executed by noted sculptor Bela Pratt.

Abolitionist Monument (1909; MHC #925; NR map #18)

A memorial to the many Abolitionist leaders who spoke at Island Grove was erected in 1909 near the site of their podium at the southern tip of the park. It consists of a large, split, granite boulder with a bronze plaque measuring 30" x 43" affixed to its flat north face. The inscription reads:

*Meetings in the cause of abolition
of slavery were held in this Grove
yearly from 1846 to 1865.*

*On this spot
William Lloyd Garrison,
Wendell Phillips, Edmund Quincy,
Theodore Parker, Francis Jackson,
Parker Pillsbury, George Thompson,
Abby Kelley Foster, Lucy Stone,
and others addressed the people.*

*Suffering all manner of abuse,
the abolitionists stood steadfast until
the slave was made free.*

*Reader, take heed! Stand for the right,
though power and wealth and all your
fellows turn against you and persecute you.
'I am in earnest-- I will not equivocate --
I will not excuse -- I will not retreat
a single inch -- and I will be heard.'
Garrison*

Erected by an Abington Soldier, who served and was wounded in the war that ended slavery.

(continued)

United States Department of the Interior
National Park Service

National Register of Historic Places Continuation Sheet

Island Grove Park HD
Abington (Plymouth), MA

Section number 7 Page 10

Noncontributing Resources

Swimming Pond (1968; NR map #11, photo #3)

The current swimming pond is located adjacent to the area where the abolitionist meetings were held in the 19th century. It is part of the 19th century pond that was set off from the remainder to provide a safe area where young children could be easily supervised. Its creation took advantage of the narrow finger of water that flows around the southeastern edge of the peninsula by constructing a wide earthen dam across the northernmost end. Sand was brought in to create a beach around the small resulting pool. Unobtrusive, low, log retaining walls were added to the north side to stabilize the naturally rising shoreline. During the summer months, docks are added to further divide the swimming pond, so that designated areas can be set aside for swimmers with various skills levels.

Bath House (1968; NR map #4)

A small pool house stands at the west end of the swimming pond. It is a one-story concrete block structure of rectangular plan under a flat roof. A concrete slab that rises above the roof is marked with a red cross symbol. A simple iron rail runs around the roof perimeter. The pool house is built into a steep hillside so that the rear elevation is completely covered and the roof is at grade level.

Other

Other noncontributing resources that post-date the period of significance are small-scale structures including swing sets (NR map #23), picnic tables, outdoor grills (NR map #20), and trash barrels. They are unobtrusive and also are related to the historic theme of recreation.

Archaeological Resources

One ancient Native American site is recorded in the park and another 5 known in the general area (within one mile). The Island Grove Park, site 19-PL-461, was recorded on the basis of the recollections of a reliable area collector who worked on a Conservation Corps project in the park during the 1930's.

(continued)

United States Department of the Interior
National Park Service

National Register of Historic Places
Continuation Sheet

Island Grove Park HD
Abington (Plymouth), MA

Section number 7 Page 11

Native American artifacts were reportedly found along the eastern shore of Island Grove Pond at that time. Environmental characteristics of the park represent several locational criteria (slope, soil drainage, distance to wetlands) that are favorable indicators for many types of ancient Native American sites. The park includes approximately 17.22 acres of upland peninsula and a 35 acre pond. Portions of the property are well drained, level to moderately sloped and lie within 1000 feet of a dammed portion of the Shumatuscacant River now known as Island Grove Pond. Much of the peninsula contains irregular topography with a gently sloping area at its southern end. The pond was first created in ca. 1700 when the river was dammed in the vicinity of Central Street to power the first of several industries in the area. The pond was enlarged to its present size in 1836. Most of the pond, previously known as Nash's Mill Pond, was created by flooding an area known as Ford's Meadow. This information indicates the Island Grove Park Site was located at the edge of uplands bordering the original river meadow. Given the above information, the size of the nominated area (approximately 53 acres) and level of historic land use on the property, a moderate to high potential exists for recovering intact ancient Native American resources within the nominated area. Historic land use and landscaping may have adversely affected the integrity of any ancient resources located in the park.

A high potential exists for locating historic archaeological resources in Island Grove Park. Late 17th and early 18th century historic settlement was present in the general vicinity of the park, however, no specific examples have been identified to date. Additional documentary research combined with archaeological survey and testing may help document whether structural evidence of a sawmill, gristmill, fulling mill and D. B. Gurney's Tack Factory survive following the creation Nash's Mill Dam in ca. 1700 in the vicinity of the intersection of Shumatuscacant River and Central Street. Remnants of buildings and structures related to these mills may have been submerged when the pond was enlarged to its present size in 1836. Archaeological evidence of the original dam and other water-power related resources may survive, possibly incorporated into the present dam or Central Street. Archaeological evidence of human remains and funerary objects should exist at the Central Burying Ground located in the northwest corner of Island Grove Park. The burying ground was established in the 18th century by David French near the rear of his property and eventually became a semi-public cemetery known as the Central Burying Ground. Most gravestones from the burying ground were relocated to Mount Vernon Cemetery following damage to the Central Burying Ground during the 1938 hurricane. Human remains were not relocated at that time. Unmarked graves should exist as well as two possible marked graves associated with 2 gravestone stubs. Archaeological evidence may also exist from buildings and structures

(continued)

United States Department of the Interior
National Park Service

National Register of Historic Places Continuation Sheet

Island Grove Park HD
Abington (Plymouth), MA

Section number 7 Page 12

associated with the park's use as a recreation area in ca. 1845 and municipal park from 1882-1951. Stratigraphic evidence may be present from landscape changes made in the park throughout the 19th and 20th century period. These changes include construction of the Swimming Pond by ca. 1874. Structural evidence may survive at the sites of a dining hall and bowling alley, present in the park in 1882 when the town purchased the property, then sold in 1883. Archaeological evidence may also survive from a well, two sanitariums and several seats scattered throughout the area after creation of the area as a municipal park in 1882. Artifact scatters are also probably present throughout the park related to its long period of public use as a recreation area, municipal park and commemorative site.

(end)

Island Grove Park HD

Name of Property

Plymouth, MA

County and State

8. Statement of Significance

Applicable National Register Criteria

(Mark "x" in one or more boxes for the criteria qualifying the property for National Register listing.)

- A** Property is associated with events that have made a significant contribution to the broad patterns of our history.
- B** Property is associated with the lives of persons significant in our past.
- C** Property embodies the distinctive characteristics of a type, period, or method of construction or represents the work of a master, or possesses high artistic values, or represents a significant and distinguishable entity whose components lack individual distinction.
- D** Property has yielded, or is likely to yield, information important in prehistory or history.

Criteria Considerations

(Mark "x" in all the boxes that apply.)

Property is:

- A** owned by religious institution or used for religious purposes.
- B** removed from its original location.
- C** a birthplace or grave.
- D** a cemetery.
- E** a reconstructed building, object, or structure.
- F** a commemorative property.
- G** less than 50 years of age or achieved significance within the past 50 years.

Narrative Statement of Significance

(Explain the significance of the property on one or more continuation sheets.)

9. Major Bibliographical References

(Cite the books, articles, and other sources used in preparing this form on one or more continuation sheets.)

Previous documentation on file (NPS):

- preliminary determination of individual listing (36 CFR 67) has been requested
- previously listed in the National Register
- previously determined eligible by the National Register
- designated a National Historic Landmark
- recorded by Historic American Buildings Survey # _____
- recorded by Historic American Engineering Record # _____

Areas of Significance

(Enter categories from instructions)

- Architecture
- Entertainment/Recreation
- Social History

Period of Significance

1834-1951

Significant Dates

See continuation sheet

Significant Person

(Complete if Criterion B is marked above)

n/a

Cultural Affiliation

N/a

Architect/Builder

Olmsted Brothers, landscape consultant
Bela Pratt J. Williams Beal

Primary location of additional data:

- State Historic Preservation Office
 - Other State agency
 - Federal agency
 - Local government
 - University
 - Other
- Name of repository:
Dyer Memorial Library, Abington Public Library

United States Department of the Interior
National Park Service

National Register of Historic Places Continuation Sheet

Island Grove Park HD
Abington (Plymouth), MA

Section number 8 Page 1

Island Grove Park National Register District Section 8 Significance

Introduction

The Island Grove Park National Register District, Abington, Massachusetts, has a long and varied history that began with early industrial development and embraces both 19th century social reform and 19th and 20th century recreation. The district possesses integrity of location, design, setting, materials, workmanship, feeling, and association. It is important primarily on the local level with a period of significance that extends from 1846 to 1951.

Island Grove Park, the site of several industrial endeavors in the 18th and early 19th centuries (a sawmill ca. 1700; gristmill ca. 1730; cloth mill ca. 1800; tack factory ca. 1830), acquired significance beginning in the 1840s as the site of large, annual abolitionist meetings. Sponsored by the Massachusetts Anti-Slavery Society, and held on July 4 or August 1, these meetings celebrated either American independence or the emancipation of slaves in the British West Indies. At a site in the Pine Grove, within what is now the park, William Lloyd Garrison addressed large audiences of over 1,000 as many as thirteen times. Many other noted abolitionists appeared as well. Participants took the train from Boston and Plymouth on tracks that parallel the east side of the park, or traveled by foot or carriage from Abington and surrounding towns. While no manmade vestiges of the meetings remain, the surroundings retain a very strong sense of the appearance described in numerous issues of *The Liberator* in the period 1846-1865.

Beginning in the mid-19th century and continuing to the present, the recreational aspects of Island Grove have been emphasized, first by private owners, and, after 1882, by the town. At various times, the site was equipped with outdoor bowling alleys, a fandango, bandstand, gazebo, and refreshment facilities. Commemorative activities came to the forefront in the early 20th century when an Abolitionist Monument with historical marker was installed (in 1909) and a Memorial Bridge and Arch with sculpture by Bela Pratt were erected (in 1912) to commemorate the soldiers and sailors of the Civil War. At the same time, the noted landscape architectural firm of Olmsted Brothers was consulted about the park and the memorial.

Island Grove Park meets criterion A for its historical associations, described above, and criterion C, as a significant and distinguishable entity with important design qualities of the early 20th century, including the Monument, Memorial Bridge, and Arch. The setting remains remarkably similar to that described in

(continued)

United States Department of the Interior
National Park Service

National Register of Historic Places Continuation Sheet

Island Grove Park HD
Abington (Plymouth), MA

Section number 8 Page 2

the mid-19th century. In addition, the park also meets criteria consideration F as a commemorative property whose design, age, tradition, and symbolic value has achieved significance in its own right.

Local Context

Present-day Abington originated as part of the Town of Bridgewater. Land was granted in the mid 17th century and settlement by a handful of families commenced in ensuing decades. Andrew Ford, who is known as the earliest settler, established himself on a knoll east of the junction of the Shumatuacacant River and Washington Street, near present-day Island Grove Park. A meetinghouse center developed nearby at Bedford and Washington Streets by 1710. The Town of Abington was incorporated in 1712 and Thomas Tirrell opened an inn in the town center ca. 1727.

Abington's early economy was based on agriculture. Timber exports to nearby shipbuilding communities like Hanover, Scituate, Hingham, Boston, Duxbury, and Plymouth were especially important, and continued through ca. 1830. In addition, several mills (saw, grist, fulling, tannery, pottery) were established on the Shumatuacacant River and on Stream's River. By the 1790s at least five grist and/or saw mills were in operation. The population rose from about 300 in 1712 to 1,293 in 1775.

Industrial and population growth were encouraged by transportation improvements, most notably, the introduction of the Old Colony Railroad in 1845, and a secondary branch in 1870. During the forty-year period from 1830 to 1870, Abington's population rose sharply from 2,423 to 9,308. Shoemaking, which was introduced in the 1790s, became the major local and regional industry in the 19th century, peaking ca. 1865 in Abington. D. B. Gurney's tack factory was the primary new non-footwear manufacturer of the mid 19th century.

Abington's sails were trimmed in 1875 when Rockland and South Abington (now Whitman) were set off as independent towns. The population did not surpass the 1870 total until 1955.

Early Site History ca. 1700 - 1845

Island Grove Park stands in an area that was originally know as Ford's Meadow, named for the town's first settler, Andrew Ford. Sometime before 1692, the land was purchased by Jacob Nash and Joseph Poole, both carpenters, of nearby Weymouth. They built the first of several sawmills in Abington on the

(continued)

United States Department of the Interior
National Park Service

National Register of Historic Places
Continuation Sheet

Island Grove Park HD
Abington (Plymouth), MA

Section number 8 Page 3

site ca. 1700. Known as "Nash's Mill," this early sawmill was powered by damming the Shumatuacacant River on the line of present Central Street. This flooded Ford's Meadow to create Nash's Mill Pond, now known as Island Grove Pond (NR map #26). Poole's heirs sold his interest in the property to Ensign Andrew Ford in 1707. The sawmill was later joined by a grist mill, a fulling mill, and D. B. Gurney's Tack Factory.

Co-owners James Nash (grandson to Jacob Nash) and Ensign Andrew Ford (grandson to Andrew Ford) reached a formal agreement that specified how high the meadow could be flooded when they added a grist mill ca. 1730. The maximum level was marked by boring a hole on the west side of Lighthouse Rock (NR map #21) which still stands today on the southwest end of the Memorial Bridge. During the 18th and early 19th centuries the pond was a shallow, teardrop-shaped body as seen on the 1830 map of Abington. When D. B. Gurney raised the dam to gain more power for his tack factory in the mid-19th century, he was sued by surrounding land owners whose property was reduced by the rising waters. A second hole on Lighthouse Rock, 10.5 inches above the original, marks the higher water level eventually agreed upon in 1846. The higher waters created the irregular pond shape seen on late 19th century maps and today.

The peninsula on the east side of the pond was part of the French family holdings in the 18th century. David French established a small family burying ground at the rear of his property on Island Grove in the mid 18th century. It gradually became a semi-public cemetery known as the Central Burying Ground (NR map #25), recognizing its location adjacent to the town center. In 1797, Stephen French sold the twelve-acre property to Jacob Nash, who in turn, sold to Jacob and Elizabeth Reed in 1803. Several members of the Reed family are buried there including Capt. Daniel Reed, who died in 1776. Thomas Hunt, the father of Abington's shoe industry, is also buried at Island Grove. Many of the gravestones were damaged by falling trees during the devastating Hurricane of 1938, leading to their removal to Mt. Vernon Cemetery in Abington. The bodies remained interred at the northwest corner of Island Grove Park, their locations now marked only by two gravestone stumps.

Recreation Area (1834-1882)

The Reed family recognized the recreational possibilities of the picturesque upland peninsula and began to develop its potential as early as 1834 when the first public picnic was held on July 27. Tree groves and water-cooled breezes from three directions combined to produce one of the pleasantest spots to be

(continued)

United States Department of the Interior
National Park Service

National Register of Historic Places Continuation Sheet

Island Grove Park HD
Abington (Plymouth), MA

Section number 8 Page 4

found anywhere. (*Unidentified newspaper clipping that references Cyrus Nash's diary*) Introduction of the Old Colony Railroad in 1845 and construction of a railroad station at the nearby corner of Park and Centre Avenues, encouraged the Reeds to develop Island Grove with a variety of facilities including an outdoor lecture area with rostrum and backless benches, an early outdoor bowling alley, a "fandango" (early hand-cranked loop-de-loop), and refreshment facilities. The pond became the site of summer "regattas" and winter ice skating.

The noted abolitionist newspaper, *The Liberator*, clearly describes the pleasurable aspects of the site, including strolling amid the pines and boating on the pond. It also documents the gradual development of facilities such as the evolution from a bring-your-own "pic-nic" format in 1846 to numerous "Booths well filled with wholesome viands, but containing nothing which could intoxicate, stood all around..." (*The Liberator* 7/9/1852) in 1852. The *Liberator* also notes the presence of seating to accommodate crowds that numbered in the thousands, and a speakers' rostrum. The pleasant aspects of the site and the facilities were factors that contributed to the long-term use of Island Grove as a site for major Abolitionist meetings.

The tradition of public celebration at Island Grove was initiated on June 10, 1862, when the 150th anniversary of Abington's incorporation as a town was commemorated at Island Grove. Governor Andrew was the guest of honor.

The 1874 atlas of Abington labels the site as Island Grove, shows a cluster of three buildings just above what is now the Swimming Pond (NR map #11), and identifies J. and E. R. Reed (Jacob and Elizabeth) as the owners. When the town purchased the property in 1882, a dining hall and bowling alley stood on the site.

Abolitionist Meetings 1846-1865

In 1846, Abington residents joined the liberal reform movement that swept Massachusetts in the 19th century. Believing passionately in man's ability to improve his condition, reformers established medical and psychiatric hospitals, orphanages, poor houses, schools, and libraries. Abolition of slavery was an early topic of concern as evidenced by the Declaration of Rights that was added to the state constitution in 1780 abolishing slavery in Massachusetts. It was preceded only by Vermont in 1777.

(continued)

United States Department of the Interior
National Park Service

National Register of Historic Places
Continuation Sheet

Island Grove Park HD
Abington (Plymouth), MA

Section number 8 Page 5

Massachusetts is well-known as the home of *The Liberator*, published in Boston by William Lloyd Garrison from 1831 - 1865. It was also the birthplace of the New England Anti-Slavery Society established in 1832 as the first organization of its type in the nation. This was one year before the American Anti-Slavery Society was organized. In 1835, the NEASS was renamed the Massachusetts Anti-Slavery Society (MASS), in recognition of the fact that several other states in the region had established their own societies and the NEASS could no longer claim to speak for all. Numerous smaller groups existed as well, including the Old Colony Anti-Slavery Society, headquartered in Plymouth, and also established in the 1830s.

Abolitionist rallies and meetings were held in several Massachusetts communities during the period 1831 - 1865. As reported in the pages of *The Liberator*, popular sites included Abington, Andover, Concord, Framingham, Lynn, Milford, New Bedford, and Worcester. Some of the sites were mentioned sporadically while Abington was cited every year. The Abington, Concord, and Framingham meetings were described as outdoor events taking place in scenic tree groves. Some meetings, such as the MASS-sponsored meeting at Island Grove in Abington, were annual events that celebrated American independence on July 4 or the emancipation of slaves in the West Indies on August 1. For example, in 1846, the first year a major meeting was held in Abington, *The Liberator* announced that:

"The anniversary of West Indian emancipation will be celebrated by public meetings in Abington, Concord, Lynn and Worcester. It is expected that the meeting at Abington will be attended by Edmund Quincy, William A. White, Addison Davis, Nathaniel H. Whiting, and others; that at Concord by George W. Stacy, William H. Channing, Caleb Stetson, and others; that at Lynn by James N. Buffum, Thomas T. Stone, and John Prince; and that at Worcester by Adin Ballou, Samuel May, J. T. Eeverett (sic), and others.

"It is hoped that there will be large and enthusiastic gatherings at all these places - - worthy of the great day to be celebrated. Let none be absent from these assemblies, who are not detained by insurmountable necessity. Come one, come all! Loring Moody, General Agent, Mass. Anti-Slavery Society." (*The Liberator* 7/31/1846)

(continued)

United States Department of the Interior
National Park Service

National Register of Historic Places
Continuation Sheet

Island Grove Park HD
Abington (Plymouth), MA

Section number 8 Page 6

Abington Abolition Meetings

Well-attended meetings, reportedly with one thousand to five thousand attendees, were held on an annual basis at Island Grove in Abington from 1846 until 1865 when the Civil War ended and slavery was abolished by the 13th amendment to the US Constitution. Abington appears to have been a convenient halfway point between Plymouth and Boston as well as the locus of several active groups and individuals. East Abington, now the Town of Rockland, was a hotbed for the Abolitionists, and Garrison and the others were often entertained at the old Reed House on Market Street. The owners of this house were most likely related to Jacob and Elizabeth Reed, who owned Island Grove. The institution of meetings in this area is related to introduction of the Old Colony Railroad in 1845 with tracks running parallel to a scenic, tree-studded point that jutted into a small pond. In most years, the railroad offered special trains and half-rate fares from both Boston and Plymouth. The pleasurable aspects of the site and the development of facilities including benches, speakers' platform, and refreshment stands were also important factors in the long-term use of Island Grove for abolitionist meetings.

The largest meetings held at Island Grove were sponsored annually by the MASS as regional events at which officers were elected. The changing roster of illustrious speakers included at least thirteen appearances by William Lloyd Garrison, who served as president of the MASS for many years. Other notable speakers included Wendell Phillips and Edmund Quincy, each of whom appeared on nine occasions. Fugitive slave William W. Brown spoke in 1849 and, on several occasions, women like Abby Kelley Foster, Ms. Sarah Pellett, and possibly Sojourner Truth addressed the crowd.

Sometimes other abolitionist groups piggy-backed smaller meetings with the MASS event, as in 1846 when the Plymouth County Anti-Slavery Society held a "Pic-Nic" on the day following the MASS meeting and featured several of the same speakers. In addition, abolitionist meetings were held at other Abington locales. For example, the Old Colony Anti-Slavery Society often sponsored meetings at the nearby town hall to raise funds for the MASS. Other meetings were held at the First Parish Congregational Church/Masonic Hall (1819; 416 Washington Street; MHC #30). It was here that Englishman George Thompson addressed a large crowd of sympathizers, curiosity-seekers, and hecklers on September 27, 1859. He returned on October 15, when he was stoned and barely escaped with his life.

Most of the MASS-sponsored meetings at Island Grove were held on August first in celebration of the anniversary of "the noblest and holiest deeds which have ever graced the history of Nations and of our

(continued)

United States Department of the Interior
National Park Service

National Register of Historic Places
Continuation Sheet

Island Grove Park HD
Abington (Plymouth), MA

Section number 8 Page 7

Race, -- the voluntary and peaceful emancipation of eight hundred thousand slaves in the British West India Islands..." (*The Liberator* 7/28/1854) West Indian emancipation occurred in 1834. In some years, most notably 1849-1853, the meetings were held on the fourth of July, which Garrison denounced as a hypocritical celebration of universal liberty that did not, and never had, existed.

The meetings in Abington and elsewhere are described in vivid detail in *The Liberator*, which is one of the primary sources for these historic events. Published over a thirty-five year period from 1831-1865, *The Liberator* documents at least fifty meetings held in Abington, most at Island Grove. The articles cover attendees, speakers, facilities, transportation, and natural surroundings. They are backed up by local historians like the late attorney William D. Coughlan, who notes that:

"Down at the southerly end of the Grove was a covered platform, rough and unpainted where William Lloyd Garrison, Wendell Phillips and others delivered fiery anti-slavery speeches to thousands, many of whom came from Boston on special trains and sat on board seats without backs."

The following accounts from *The Liberator* of meetings held at Island Grove are typical.

"The celebration of the First of August in Abington, was attended with the most entire and brilliant success..... The meeting was held in the most delicious spot that nature ever framed for the refreshment of man..... A peninsula of the greatest and most graceful variety of surface, crowned with whispering pines, and bathed on three sides by a broad stream of gentle waters, it afforded a fitting theatre for the sacred festival of freedom. The scene, when the multitude was dispersed over the extensive grounds – some exploring its romantic recesses, some standing on the margin of the stream that mirrored them, now and then broken by a gliding sail, some seated in picturesque groups upon the grass..... The amphitheatre for the exercises of the day was placed in a commanding position, and seats provided for a thousand persons, which were thronged throughout the day, and surrounded by many more, who filled up all the interstices of the amphitheatre, and stood in thick crowds on all sides of the platform." (*The Liberator* 8/7/1846)

(continued)

United States Department of the Interior
National Park Service

National Register of Historic Places
Continuation Sheet

Island Grove Park HD
Abington (Plymouth), MA

Section number 8 Page 8

"At an early hour in the morning, the beautiful grove at Abington was filled as never before with a crowded throng of the sons and daughters of New England..... The carriages and horses stood almost innumerable in the shade of the trees. Booths well filled with wholesome viands, but containing nothing which could intoxicate, stood all around..." (*The Liberator* 7/9/1852)

"This grove has a situation remarkably favorable for the purposes of such a meeting. Equi-distant from the city of Boston and the venerable town of Plymouth, the landing place of the Pilgrim Fathers of New England, -- surrounded by many flourishing towns which contain a large, intelligent and highly educated population, -- easily accessible by railroad from the city and larger towns, it is in itself a spot of great natural beauty, affording a most agreeable resort and shelter, whether for the purposes of speaking and hearing, or otherwise spending the day in the open air. To the friends of freedom, the place has become hallowed by the memory of many gatherings which have been held there in behalf of their cause, of bold and eloquent words from honored lips there uttered, and of noble purposes there formed, which have stamped themselves in deeds upon the history of the country." (*The Liberator* 8/7/1857)

While *The Liberator* reported on the throngs of supporters who attended the anti-slavery meetings at Island Grove, other citizens were bitterly opposed, some quietly and some vocally. Abington was a shoemaking town, and those manufacturers who had vested interests in the Southern market opposed the aggressive crusaders who, in their view, were dividing the nation. William D. Coughlan wrote that one enterprising anti-Abolitionist once hired the Grove a year in advance to prevent a July 4th meeting, but failed to look at the calendar. Because July 4th fell on a Sunday that year, the meeting was held on the following day, so his expenditure had no effect.

There are other stories of the "anti's" firing cannon regularly from across the water so that the speakers could not be heard. Once things got so hot for William Lloyd Garrison, the principal orator of the day, that he was forced to hide in a load of hay to get away from the belligerent mob. The former event was described in *The Liberator*:

(continued)

United States Department of the Interior
National Park Service

National Register of Historic Places
Continuation Sheet

Island Grove Park HD
Abington (Plymouth), MA

Section number 8 Page 9

"On arriving at the Grove, our ears were saluted with the sound of cannon, discharged from the opposite shore, placed there purposely to annoy us, but failing entirely in producing the effect intended. Some Webster Whigs had raised about forty dollars, it is said, for the purchase of powder, and had employed men to load and fire all day, for the annoyance of the abolitionists. But it will take more gunpowder, with shot added, than was ever yet made, to silence the voice of truth, and more than forty dollars worth of gunpowder to blow Daniel Webster into the White House at Washington." (*The Liberator* 7/11/1851)

The final abolition-related meeting at Island Grove was held on July 27, 1865, when well over 1,000 citizens gathered to welcome and honor Abington's returning Civil War soldiers.

The meetings at Island Grove appear to have made abolition and the Civil War even more important to Abington than to other "Union" communities. While most towns erected war memorials on town greens, in cemeteries, or in front of town halls, Abington did far more and also continued the focus on Island Grove, which as *The Liberator* had noted was "hallowed by the memory of many gatherings which have been held there." On Memorial Day, 1909, Capt. Moses N. Arnold and some of his comrades in arms dedicated a boulder to the abolitionists on the spot where William Lloyd Garrison, Wendell Phillips and other great orators had addressed crowds which the accounts say numbered up to five thousand. In 1912, the town went even further by erecting an elaborate Memorial Bridge and Arch as a grand western approach to Island Grove.

Municipal Park 1882 - 1951

As noted previously, recreational use of Island Grove began in 1834 under the auspices of the Reed family who owned the property at the time. Jacob and Elizabeth Reed developed a variety of facilities on the property both before and after the Civil War.

Recreational use was confirmed in 1881 when the town petitioned the General Court for permission to establish a public park at Island Grove, along with a park department. The petition was approved on February 4, 1882. On April 26, 1882, the town acquired the peninsula that formed the core of the park from Warren and Bela Wilkes for \$3,250. The Wilkes had purchased the property from Reed family descendants. The Giles family retained rights of flowage but agreed to maintain the pond at a consistent

(continued)

United States Department of the Interior
National Park Service

National Register of Historic Places
Continuation Sheet

Island Grove Park HD
Abington (Plymouth), MA

Section number 8 Page 10

level no more than one foot below a designated hole in Lighthouse Rock (NR map #21). Upon purchase, in 1883, the town sold a dining hall and bowling alley that had been on park site, as well as logs and wood. Clearing stumps, fallen trees, and underbrush was a task that continued through the late 19th and early 20th centuries.

The park got off to a slow start, in large measure because access was difficult and the area was in poor repair. Park access was partially addressed in 1887 when Park Avenue was laid out on the east between the park and the railroad. A driveway into the park was created at the same time. In 1893, a pavilion was erected (NR map #10); the old well was renewed; a pump was put in; ten zinc-covered seats were scattered around the park; and two "sanitaries" were built. The same year the park commissioners requested the authority to make rules for the park. By 1897 the park commissioners reported, "Many of our citizens availed themselves of the privilege which few towns possess, that of a beautifully shaded park, nearly surrounded by water." They also requested more shelter, benches, and trash receptacles to serve the growing number of park patrons. The year 1898 brought a big storm that damaged over 150 trees in the park and required several years to clean up, a recurring theme in the history of Island Grove.

The first decade of the 20th century was a busy one for the park. In 1900 the park commissioners published the first park rules and complained about the need for more funds now that the park was more heavily used. In 1901 the park commissioners proposed that swimming be permitted in the pond and that a bathhouse be constructed. In 1902 the park commissioners supported their request for funds with a statement about the significance of the park: "The historic interest which is attached to this spot, and the pleasure and benefit derived from its use, is a good reason for this expenditure." By 1903 a promenade was proposed along the waterfront. In 1905 the park was described as "a spot of unusual beauty and of rare historic interest." Due to the significance of the park, the commissioners felt they needed professional design advice. Thus, in 1908, they commissioned the landscape architectural firm of Olmsted Brothers to advise them regarding the park. Olmsted Brothers recommended that the grove be retained as a pine grove, and young pines were started in a nursery. By 1910 the park had double the number of visitors of any previous year.

As noted above, the annual reports of the park commissioners frequently commented on the historical significance of the park. Beginning in 1909 with the construction of an Abolitionist Monument (NR map #18), the park assumed a more formal commemorative function. The monument consists of a large

(continued)

United States Department of the Interior
National Park Service

National Register of Historic Places Continuation Sheet

Island Grove Park HD
Abington (Plymouth), MA

Section number 8 Page 11

bronze plaque, attached to the northern face of a great boulder. It stands on the site of the speakers' platform and is dedicated to the speakers and participants in the abolitionist meetings held at Island Grove. It was donated to the town by Capt. Moses N. Arnold, a local shoe manufacturer who had attended the abolitionist meetings and had fought in the Civil War with the 12th Massachusetts Volunteers, in Company G. The marker was accepted by the town and dedicated with appropriate exercises on May 30, 1909.

The commemorative function was further reinforced in 1912, the 200th anniversary of Abington's incorporation as a town. At that time, a special committee that included the park department and eight other citizens, was appointed to investigate the matter of a Civil War memorial. The committee decided that Island Grove was the most appropriate location, and, with the help of Olmsted Brothers and architect J. Williams Beal, developed plans for a memorial footbridge and arch (NR map #s 5, 6) that would provide a monumental approach to Island Grove from the west. Funds were provided by the town, private subscription, and collections by Grand Army organizations. To keep costs at a reasonable level, concrete was selected as the building material. The bridge was constructed by Wilson & Tomlinson, and the arch by Emerson & Norris, both Boston firms.

Writing to committee member Moses Arnold on January 23, 1911, Olmsted Brothers stated:

"We like the idea of an arch for this memorial purpose because it seems to us adequately to measure up to the greatness of the event. There are but few other types of memorials or monuments which would do this as well, and they would not lend themselves to the proposed method of construction in concrete with anywhere near the assurance of good resultant effect....."

"The historical sentiment in the park appeals to us as exceptional, and a monument expressive of the great climax of the struggle which had its earliest voicings here seems eminently fitting." (*Annual Report*)

Olmsted Brothers went on to warn that the proportions of the arch should be beautiful, that its scale should not be trivial, and that the surface should be dressed to avoid the pasty appearance of some

(continued)

United States Department of the Interior
National Park Service

National Register of Historic Places Continuation Sheet

Island Grove Park HD
Abington (Plymouth), MA

Section number 8 Page 12

concrete. They enclosed a sketch of an arch of suitable scale to have bas-reliefs on the pond side and panels inscribed with soldiers' names on the park side. The panels appear never to have been executed. Embellishment with sculptural elements by Bela Pratt greatly enhanced the artistic value of the memorial arch.

A later writer, William D. Coughlan, provided additional information:

"The arch and bridge are the Old Town's tribute to those who finished the task which the Abolitionists began. More than twelve hundred men from old Abington served from Bull Run to Appomattox. Some died beside the old stone walls at Antietam and Gettysburg and some lived to return to the Grove where fifteen thousand gathered to pay tribute to those who fought to preserve the Union. On June 10, 1912, at the celebration of the Two Hundredth Anniversary of the incorporation of the original Town of Abington, they dedicated the arch and bridge at Island Grove. The bronze eagle, eleven feet high, at the top of the arch is the gift of Lewis A. Crossett, another shoemaker who manufactured here in the glory days. The bas-reliefs which depict the soldier and sailor of 1861 were donated by the Women's Relief Corps. The figures are the work of Bela Pratt, a noted Boston sculptor. The memorial bridge extends three hundred feet from Lake Street to the Grove and was erected at a cost of \$23,000." (Coughlan "Island Grove, A Shrine or A Swimming Pool")

President William Howard Taft was the guest of honor at the June 10, 1912 ceremony.

During the early 20th century the town made some minor land acquisitions. In 1912, it purchased the northerly side of the pond from the heirs of Nathaniel Howe in order to build the Memorial Bridge. Additional land in this area was taken by eminent domain in 1922. In 1920 arrangements were made with the heirs of Col. Thomas Hunt for purchase of the land under the pond. Two years later the land under the pond was taken by eminent domain and the flowage rights were purchased by the town.

Island Grove Park and its pond have always been popular spots for community recreation and entertainment. Ice skating and sailing were mentioned in the early and mid 19th century. The Manomooskeagin canoe club was organized early in the 20th century and flourished for years with as many as a hundred canoes appearing during regattas and other special affairs. Band concerts on the point were also popular events.

(continued)

United States Department of the Interior
National Park Service

National Register of Historic Places Continuation Sheet

Island Grove Park HD
Abington (Plymouth), MA

Section number 8 Page 13

Park Department reports of the 1920s confirm a strong emphasis on recreation. In 1920 a bequest was used to build an "elaborate and permanent" bandstand at the southwest corner of the peninsula, providing a more suitable setting for the popular band concerts (NR map #9). Changing rooms for swimmers were located in the bandstand base. A park supervisor was hired to teach swimming. Around the same time, the town spent considerable energy building retaining walls at the pond edges to prevent erosion and to protect tree roots (NR map #8). In 1922 it was described as an ornamental rubble stone wall. The town also continued to plant pine trees in accordance with the recommendations of Olmsted Brothers. In 1931 alone, 2,600 three-year-old pines were planted and 2,000 seedlings purchased. A catastrophic event occurred in September 1938 when a hurricane destroyed 400-500 trees, many over 100 years old. Repairs took several years, with assistance provided by the federal Works Progress Administration. The continuous replanting program has maintained the grove (NR map #17) noted so frequently in *The Liberator*.

Several concrete benches (NR map #19) were placed in 1928, a refreshment stand was constructed in 1931, and a stone-lined drainage culvert was completed in 1931-1934. In 1939, concerns about pollution led to the first of several bans on swimming in Island Grove Pond. A rustic Girl Scout cabin (NR map #1) and storage shed (NR map #2) were constructed prior to 1951, perhaps as part of the WPA effort.

Modern Period (post-1951)

The post-war years brought ever greater use to the park with an increasing number of permits issued to church and civic groups. Pollution of the warm pond waters continued to be an ongoing problem. Swimming was reinstated in 1954 after fifteen years, only to close again a few years later. The last major project at Island Grove responded to that problem with construction of a "swimming pond" (NR map #11) and concrete bathhouse (NR map #4) in 1968. The swimming pond was created by building a dam across the northern part of Moses Neck, a narrow finger of water on the east side of the park peninsula. Now pure but icy water is pumped from a deep well, assuring the town's young swimmers of a pollution-free pool. A well-organized swimming and life-saving program in the summer months is under the supervision of the Park & Recreation Department.

The main body of the pond is now stocked with fish and canoeing is still encouraged. Picnic tables and outdoor grills are provided throughout the park, which remains the focal point of town celebrations. The

(continued)

United States Department of the Interior
National Park Service

National Register of Historic Places
Continuation Sheet

Island Grove Park HD
Abington (Plymouth), MA

Section number 8 Page 14

Abington Garden Club has regularly planted and maintained trees and has helped protect the well-kept but natural look of the wooded ridges and dells.

Island Grove Park remains a vital and central component of the community, a place where celebrations (Memorial Day, Fourth of July) are held, where community and family groups hold their outings, and where the children of Abington spend their summer months. It also proudly records an extraordinary aspect of Abington's past, that of its annual abolition meetings. The spirit of those meetings continued to influence Abington in the 20th century when a monument to the meetings was placed in 1909, and an elaborate bridge and arch were constructed in 1912 to memorialize the soldiers and sailors who fought in the Civil War. While many Massachusetts communities created parks and honored Civil War participants in the late 19th century, Abington valued the strong identity of its 19th century heritage and sought to preserve it within the dramatic pine grove that had sheltered the early abolitionists.

People Associated with Island Grove

Abolitionists

William Lloyd Garrison

William Lloyd Garrison was born in Newburyport in 1805 to a middle-class family. He was apprenticed to a newspaper editor at age 13 and continued in the news and printing business throughout his career. Garrison evidenced an early interest in the abolition of slavery and brought it together with his profession on January 1, 1831 when he published the first issue of *The Liberator* in Boston. *The Liberator* was the first anti-slavery publication in the nation. Garrison made his intentions for his new enterprise clear in his first editorial:

"I am aware that many object to the severity of my language, but is there not cause for severity? I will be harsh as truth, and as uncompromising as justice. On this subject, I do not wish to think, or speak, or write, with moderation. No! No! Tell a man whose house is on fire to sound a moderate alarm.... but urge me not to use moderation in a cause like the present....

I am in earnest -- I will not equivocate -- I will not excuse -- I will not retreat a single inch -- AND I WILL BE HEARD."

(continued)

United States Department of the Interior
National Park Service

National Register of Historic Places
Continuation Sheet

Island Grove Park HD
Abington (Plymouth), MA

Section number 8 Page 15

Later that year, Garrison played a central role in establishment of the New England Anti-Slavery Society, along with David Lee Child, Samuel E. Sewall, Ellis Gray Loring, and Oliver Johnson. It was the first society of its type in the nation, preceding the American Anti-Slavery Society by one year. In 1835 its name was changed to the Massachusetts Anti-Slavery Society. The 13th amendment passed in 1865, and later that year Garrison published the last issue of *The Liberator*. He died in 1879.

William Lloyd Garrison was a frequent attendee and speaker at the Abington meetings as noted in his recent biography:

Abolitionist activity regulated the calendar. For Garrison the year began by hailing another volume of his newspaper and continued with the MAS annual meeting at the end of January. Early May brought the AAS meeting during New York's 'anniversary week' gathering of all the great benevolent organizations, and late May saw a similar gathering including the ad hoc New England Anti-Slavery Convention, in Boston. July featured an abolitionist picnic and rally at Abington (sic) or Framingham on the Fourth, and August meant a similar observance on the First to honor abolition in the British West Indies." (Mayer: 347)

Garrison was involved in a variety of other social causes in addition to abolition, using *The Liberator* to attach discrimination against women, smoking, drinking, the Military, the clergy, the government, and cruelty to animals. (Parsons & Drew)

Wendell Phillips

Wendell Phillips was born in Boston in 1811, son of the city's first mayor. He graduated from Harvard in 1831 and received his law degree from the same institution in 1834. Phillips joined the abolitionist cause in 1836 and remained a devoted adherent until slavery was finally ended in 1865. Phillips was especially noted for his unsurpassed ability as an orator, with the ability to sway even hostile audiences.

Edmund Quincy

Edmund Quincy, son of another Boston mayor, was also a major figure in Garrison's circle and a frequent speaker at Island Grove. Quincy was renowned for his ability to speak with both wit and humor.

United States Department of the Interior
National Park Service

National Register of Historic Places Continuation Sheet

Island Grove Park HD
Abington (Plymouth), MA

Section number 8 Page 16

Abby Kelley Foster

Abby Kelley Foster was one of the several women who took an active role in the abolitionist cause. Along with Maria Chapman, Oliver Johnson, and Bronson Alcott, she was one of the sponsors of "The Friends of Universal Reform" in 1840.

Sojourner Truth

Sojourner Truth was a fugitive slave and itinerant evangelist. Most commonly associated with Northampton in western Massachusetts, she is believed to have spoken at Island Grove in company with William Lloyd Garrison and Wendell Phillips.

Abington

Moses Noyes Arnold

Moses Noyes Arnold (1844-1919) was an Abington native who attended the local "common school" and then entered the shoemaking business established by his father and grandfather. He enlisted in the Union Army as a private in 1861 at age 17. Promoted to Captain in 1863, he saw action in several major battles including Antietam where he was wounded and subsequently discharged in 1864. Upon his return to Abington, he started the M. N. Arnold Shoe Company and took an active role in business and civic affairs. In 1909, he donated the bronze plaque in Island Grove Park that memorializes those who served in the Civil War as well as the abolitionist meetings that took place in the park.

Designers

Olmsted Brothers

The firm of Olmsted Brothers, successor firm to that of renowned landscape architect Frederick Law Olmsted, completed several projects for the town of Abington. The firm's initial consultation in 1909 was apparently a brief site visit and informal recommendations that centered on preserving the character of the pine grove. There is no job number assigned to this project and no plans exist. Similarly the firm's 1911 work on the Soldiers Monument (Job No 5173), another project initiated by Moses Arnold, was relatively cursory and seemed to involve primarily siting of the monument and bridge. The one plan

(continued)

United States Department of the Interior
National Park Service

National Register of Historic Places
Continuation Sheet

Island Grove Park HD
Abington (Plymouth), MA

Section number 8 Page 17

on file at the Olmsted National Historic Site (5173-1) is a very general layout of the park with the bridge and monument sketched in. It does not show any detail regarding the Olmsted firm's recommendations. Several later Olmsted Brothers projects in Abington were not associated with Island Grove Park. Abington Memorial (Job Number 7354) involved siting of a memorial statue between the old high school and the legion hall and recommendations for plantings around it. There are 10 plans on file at Olmsted NHS (6 by the Olmsted firm), including a rendering. The Peregrine White Sanctuary (Job Number 9644) was a preliminary proposal undertaken in 1941 that was never implemented. It was on land that later became part of Ames Norwell State Park.

J. Williams Beal

J. Williams Beal (1855-1919) was born in South Scituate, now Norwell, and studied architecture at the Massachusetts Institute of Technology. Upon graduation at the age of 22, Beal found employment in the New York offices of two of the most celebrated architectural firms of the period: Richard Morris Hunt, and McKim, Mead & White. He subsequently spent several years of study and travel in Europe, returning to the Boston area as an exceptionally well-trained architect. Beal opened his own practice in 1888 in partnership with his sons Horatio and John Woodbridge Beal. Several of Beal's most important works are in Plymouth County. They include Plymouth County Hospital and Jail, and the Executive Building and Club House for the Walk-over Shoe Company in Brockton. The firm was noted for its residential work throughout New England. Examples include the Charles Jones House "Beachstone", the Sara M. Scull House (1895: NRHD) and the Merchant House (1902), all large summer houses in West Falmouth, Mass. (*Withey: 44 - 45*)

Bela Pratt

Bela Lyon Pratt (1867-1917) was born in Norwich, Connecticut. At age 16, he entered the Yale School of Fine Arts. Later he studied with Augustus Saint-Gaudens and at the Ecole des Beaux-Arts in Paris. Pratt lived in Boston from 1892 until his death in 1917. This nationally renowned sculptor is noted for several works in Massachusetts including the Soldiers and Sailors Monument in Malden (Bell Rock Park NR, 2001), the figures of Art and Science at main door to McKim, Mead & White's Boston Public Library, sculptural figures on Wheelwright and Haven's Boston Opera House, and Guy Lowell's Museum of Fine Arts, both in Boston. (*Tucci: 77, 139-140, 148, 153*)

(continued)

United States Department of the Interior
National Park Service

National Register of Historic Places Continuation Sheet

Island Grove Park HD
Abington (Plymouth), MA

Section number 8 Page 18

Archaeological Significance

Since patterns of ancient Native American settlement in Abington are poorly understood, any surviving sites could be significant. Archaeological survey and testing in the park may locate evidence of the Island Grove Park Site, 19-PL-461, originally located in the 1930's. Archaeological evidence at this site and other sites in the area may contain cultural material and evidence that documents site temporal periods, functions, variability and settlement role within the interior portion of the Taunton River drainage. Ancient Native American sites in this area may contain information that documents a seasonal or functional role with sites along lower portions of the Taunton River drainage to the south and southwest. Information may also be present at sites in the nominated area that documents an interior adaptation to sites along the southeastern New England coastal plain. Ancient Native American sites in the Abington and Island Park locale may also contain important information relating to lithic technology, procurement and trade.

Historic archaeological resources described above have the potential to provide important social, cultural and economic information relating to Abington's early period of settlement, industrial evolution and growth of public and private patterns of recreation. Historical research combined with archaeological survey, testing and careful mapping may document the evolution of water-power related structures responsible for the growth of Island Grove Pond to its present boundaries. The above information may identify potential patterns of reuse as earlier water-power structures were incorporated into later built structures or modified for changing industries through time. Similar research may also document the sites of a sawmill (ca. 1700), gristmill (ca. 1730), fulling mill (ca. 1800) and tack factory (ca. 1830) operations documented in the area. These industries were not located in upland areas of the park, however, resources related to their operations may be submerged within the flooded waters of Island Grove Pond. Additional historical and archaeological research may document the locations of these industrial operations, their power systems and relationships, if any, through time. Detailed analysis of occupational related features (trash pits, privies, wells) related to potential industrial resources in the park might also contain important information relating to industrial workers, production and technologies in use at each operation. Human remains and funerary objects associated with marked and unmarked graves at the Central Burying Ground may also contribute important information relating to Abington's 18th and 19th century population and mortuary customs during that period. Osteological studies may contribute important information relating to the physical appearance, overall health and

(continued)

United States Department of the Interior
National Park Service

National Register of Historic Places Continuation Sheet

Island Grove Park HD
Abington (Plymouth), MA

Section number 8 Page 19

pathologies that characterized Abington's early population. Information may also be present that indicated how these characteristics changed through time. Funerary objects associated with individual and groups of graves may also contain important information relating to social status and mortuary customs. Analysis of the contents and distribution of marked and unmarked graves at the Central Burying Ground may also contain important information that documents changing burial patterns as the cemetery evolved from a small family burying ground in the 18th century to a semi-public cemetery in the 19th century. Documentary research and archaeological testing can also document the extent that landscape changes in the park altered the natural topography in the area. Archaeological evidence of buildings and structures associated with recreational facilities and development of the area as a municipal park may contribute important information relating to recreational architecture and the evolution of municipal park facilities. Artifact distributions identified through archaeological testing may also indicate evidence of generalized or specific recreational and commemorative activities conducted in the area.

(end)

United States Department of the Interior
National Park Service

National Register of Historic Places Continuation Sheet

Island Grove Park HD
Abington (Plymouth), MA

Section number 9 Page 1

Bibliography

Abington Historical Commission. *Reconnaissance Survey*. Submitted by AHC to MHC. May, 1982. typescript.

Abington Park Commissioners, *Annual Reports*, 1882 – 1960s, Copies in Abington Town Library

Coughlan, William D., "History of Old Abington". *Rockland Standard*. 8/23/1962. Copy at Dyer Memorial Building, Centre Avenue, Abington

Coughlan, William D., *Island Grove--A Shrine or a Swimming Pool*. undated, unpublished paper, read to Historical Society of Old Abington, 8 December 1971. Copy in Archives of the Society, Dyer Memorial Building, Centre Avenue, Abington.

Dyer Memorial Library files, clippings, manuscripts, historic postcards, etc.

Faunce, Carlos P. *The Town Pump*. 1949. Unpublished paper in Archives of Historical Society of Old Abington, Dyer Memorial Building, Centre Avenue, Abington.

Garrison, William Lloyd (ed). *The Liberator*. Boston. 1831-1865.

"Island Grove, Its Fame, Its Beauty, Its Pleasures". unidentified newspaper clipping dated 5/22/1885 in possession of Mr/Mrs Frank Dennis, 144 Centre Avenue, Abington.

Massachusetts Historical Commission. *Reconnaissance Survey Report*. August, 1981. typescript.

Massachusetts Historical Commission. *Historic and Archaeological Resources of Southeastern Massachusetts*. June, 1982.

Mayer, Henry. *All on Fire: William Lloyd Garrison and the Abolition of Slavery*. St. Martin's Press. New York. 1998.

Olmsted National Historic Site. Archives re Olmsted projects in Abington. Brookline, MA.

(continued)

United States Department of the Interior
National Park Service

National Register of Historic Places
Continuation Sheet

Island Grove Park HD
Abington (Plymouth), MA

Section number 9 Page 2

Plymouth County Registry of Deeds: Town of Abington from Bela & Warren Wilkes 484: 383
(26 April 1882).

Tucci, Douglas Shand. *Built in Boston, City & Suburb*. New York Graphic Society. Boston.
1978.

Winsor, Justin. *Memorial History of Boston, including Suffolk County Massachusetts: 1730-
1880*. James Osgood and Co. (Vol III: 369-400). Boston. 1882.

Withey, Henry F. and Elsie Rathburn. *Biographical Dictionary of American Architects
(Deceased)*. Hennessey & Ingalls, Inc. Los Angeles. 1970.

Works Progress Administration. *The WPA Guide to Massachusetts: The Federal Writers'
Project Guide to 1930s Massachusetts*. Pantheon Books. New York. 1983 reprint of
1937 Publication: *Massachusetts, a Guide to its Places and People*.

Maps

1830. *Map of Abington, Mass.*

1848. *Map of Abington, Mass.* surveyed by Whitney, E.

1874. *Atlas of Abington and Rockland, Mass.* Comstock & Kline. New York.

1879. *Atlas of Plymouth County.*

1903. *Atlas of Plymouth County.*

(end)

Island Grove Park HD
Name of Property

Plymouth, MA
County, State

10. Geographical Data

Acreage of Property approx. 53 acres

UTM References See continuation sheet.

(Place additional UTM references on a continuation sheet)

1. 19	339480	4663270	3. 19	339570	4664080
Zone	Easting	Northing	Zone	Easting	Northing
2. 19	359370	4663990	4. 19	339790	4664040
Zone	Easting	Northing	Zone	Easting	Northing

— See continuation sheet

Verbal Boundary Description

(Describe the boundaries of the property on a continuation sheet.)

Boundary Justification

(Explain why the boundaries were selected on a continuation sheet.)

11. Form Prepared By

name/title Candace Jenkins, Shary Page Berg, consultants, with Betsy Friedberg, NR director, MHC

Organization Massachusetts Historical Commission date January 2002

street & number 220 Morrissey Boulevard telephone 617-727-8470

city or town Boston state MA zip code 02125

Additional Documentation

Submit the following items with the completed form:

Continuation Sheets

Maps

A **USGS map** (7.5 or 15 minute series) indicating the property's location.

A **sketch map** for historic districts and properties having large acreage or numerous resources.

Photographs

Representative **black and white photographs** of the property.

Additional items (Check with the SHPO or FPO for any additional items)

Property Owner

(Complete this item at the request of the SHPO or FPO.)

name Town of Abington

street & number 500 Gliniewicz Way telephone 781-982-2100

city or town Abington state MA zip code 02351

Paperwork Reduction Act Statement: This information is being collected for applications to the National Register of Historic Places to nominate properties for listing or determine eligibility for listing, to list properties, and to amend existing listings. Response to this request is required to obtain a benefit in accordance with the National Historic Preservation Act, as amended (16 U.S.C. 470 et seq.).

Estimated Burden Statement: Public reporting burden for this form is estimated to average 18.1 hours per response including the time for reviewing instructions, gathering and maintaining data, and completing and reviewing the form. Direct comments regarding this burden estimate or any aspect of this form to the Chief, Administrative Services Division, National Park Service, P.O. Box 37127, Washington, DC 20013-7127; and the Office of Management and Budget, Paperwork Reductions Project (1024-0018), Washington, DC 20503.

United States Department of the Interior
National Park Service

National Register of Historic Places
Continuation Sheet

Island Grove Park HD
Abington (Plymouth), MA

Section number 10 Page 1

Additional UTM References

5. 19	339840 4663720	6. 19	339800 4663410
Zone	Easting Northing	Zone	Easting Northing

Verbal Boundary Description

Island Grove Park National Register District encompasses Island Grove Pond (approximately 35 acres), a 17.22 acre upland neck that juts into its east side, and a narrow wedge on the west bank for a total of approximately 53 acres. The boundaries are shown on the attached Town of Abington Assessor's Plans #71, 72, 75, 76, 79, 80, 84, 85 (January 1997; Scale 1" = 40'). The land portion of the park occupies lot #19. The district boundaries are the same as those of the municipal park. Both are part of the block formed by Central Street (N), Park Avenue (E), Centre Avenue (S), Lake Street (SW), and Washington Street (NW). The district boundary excludes all privately owned land that borders the pond.

Beginning at Wilson Place, the district boundary runs northward along the west shore of Island Grove Pond and the rear lot lines of private properties. At Central Street the boundary turns eastward along the north shore of Island Grove Pond and then south and southeast along the northeast shore, excluding the private properties at the corner of Central Street and Park Avenue. Following the side lot lines of lots #76-15 and 76-16, the boundary turns eastward to Park Avenue. The boundary then continues southward along the west side of Park Avenue to the side lot line of lot #80-2 (2 properties north of Pond Street) where it proceeds westward to the east shore of Island Grove Pond. The district boundary then continues southward along the shore, excluding private properties located on Park, Pond, and Reed Streets. The boundary then proceeds northwest, south, and west along the south of the pond, excluding private properties located on Park, Cottage, Quincy, and Granite Streets. It then turns northward along the west shore of the pond to a point opposite Chapel Street, excluding private properties located on Lake Street. There, the boundary turns west to Lake Street, then north along the east side of Lake Street to the point of beginning. This includes a narrow wedge of land on the shore of the pond between Chapel Street and Wilson Place. This land was acquired in 1912 to provide a terminus for the Memorial Bridge (NR map #5).

Verbal Boundary Justification

The boundaries of the Island Grove National Register District conform to those of the municipal park as acquired in 1882, 1912, and 1922. This area has encompassed a succession of important uses over time including early industry, social activism, and recreation of various types. The area embraces thirty resources of varying date and historic use that reflect its development over time. Twenty-two of those resources contribute to the historic character of the district. Surrounding residences are excluded because focus is on the park and the events that took place there.

United States Department of the Interior
National Park Service

National Register of Historic Places Continuation Sheet

Island Grove Park HD
Abington (Plymouth), MA

Section number photo Page _____

Black & White Photograph List

Photographer: Candace Jenkins, Belmont

Date: June 7, 2001

1. Facing north from Bandstand area to Memorial Bridge (NR map #5) along west bank of Island Grove Pond #26) showing pond walls (NR map #8); Refreshment Stand (NR map #3) and Bath House (NR map #4) visible in Tree Grove (NR map #17) to right. (neg #5-5a)
2. Facing south from Memorial Bridge to Bandstand (NR map #9) along west bank of Island Grove Pond (NR #26) showing pond walls (NR map #8); Refreshment Stand (NR map #3) visible in Tree Grove (NR map #17) (neg #5-10a)
3. Facing north to Swimming Pond (NR map #11) and Tree Grove (NR map #17) in abolitionist meeting site #5-2a)
4. Facing east to Memorial Arch (NR map #6) from Memorial Bridge (NR map #5) (neg #5-9a)
5. Facing north to Concrete bench (NR map #19) and part of Gazebo (NR map #10) in Tree Grove (NR map #11-2a)

(end)

**Island Grove Park National Register District
Abington, Mass.
District Data Sheet 9/24/2001**

Resource Summary

<u>Contributing</u>	<u>Noncontributing</u>	<u>Total</u>	
3	1	4	<u>buildings</u>
3	0	3	<u>sites</u>
13	2	15	<u>structures</u>
3	5	8	<u>objects</u>
22	8	30	<u>TOTAL</u>

Estimated Acreage approximately 53 acres including upland peninsula (17.22 acres) plus pond (approximately 35 acres)

Assessors Map #s 71, 72, 75, 76, 79, 80, 84, 85

NR Map#	Photo #	Assessor Map #	MHC #	Structure/Landscape/Feature Name	Constr. Date	Designer	Style	Type/Status
				Buildings				
1		80		Girl Scout Cabin	ca. 1950	unknown	Craftsman, Rustic	C/B
2		80		Storage/Recreation Shed	ca 1950	unknown	Craftsman, Rustic	C/B
3	2	80		Refreshment Stand	1931	unknown	Craftsman, Rustic	C/B
4		80		Bath House (concrete)	1968	unknown	No Style	NC/B
				Structures				
5	1	79, 80	926	Memorial Bridge	1912	J. Williams Beal	n/a	C/St

Island Grove Park National Register District
Abington, Mass.
District Data Sheet 9/24/2001

2 of 3

NR Map#	Photo #	Assessor Map #	MHC #	Structure/Landscape/Feature Name	Constr. Date	Designer	Style	Type/Status
6	4	80	926	Civil War Soldiers' Memorial Arch	1912	Bela Pratt Olmsted Brothers	Beaux Arts	C/St
7		75, 79		Stone walls at Lake Street end of memorial bridge	1912-17	n/a	n/a	C/St
8	1, 2	79, 80		Pond walls lining pond at south tip of park, and small portion of west bank south of bridge	early 20 th cen	n/a	n/a	C/St
9	2	80		Bandstand base	1920	unknown	No Style	C/St
10	5	80		Gazebo	ca. 1893	unknown	No Style	C/St
11	3	80		Swimming Pond and dam	1968	n/a	n/a	NC/ St
12		79, 80		Wooden perimeter fencing, Park Avenue and Lake Street	late 20 th cen	n/a	n/a	NC/ St
13		76, 80		Granite gateposts at Park Avenue entrances	late 19 th cen	n/a	n/a	C/St 2
14		79, 80		Drainage system; culvert, holding pool, stone wall at Park Ave.	1931-1934	unknown	n/a	C/St 3
				Circulation System				
15		75, 76, 79, 80		Footpaths	19 th cen	n/a	n/a	C/St
16		76, 80		Roads	19 th cen	n/a	n/a	C/St

**Island Grove Park National Register District
Abington, Mass.
District Data Sheet 9/24/2001**

4 of 3

NR Map#	Photo #	Assessor Map #	MHC #	Structure/Landscape/Feature Name	Constr. Date	Designer	Style	Type/Status
				Other				
26	1, 2	71, 72 75, 76, 79, 80, 84, 85		Pond	early 18 th cen early 19 th cen	n/a	n/a	n/a
27		80		Sugar bowl	n/a	n/a	n/a	n/a

UNITED STATES DEPARTMENT OF THE INTERIOR
NATIONAL PARK SERVICE

NATIONAL REGISTER OF HISTORIC PLACES
EVALUATION/RETURN SHEET

REQUESTED ACTION: NOMINATION

PROPERTY NAME: Island Grove Park National Register District

MULTIPLE NAME:

STATE & COUNTY: MASSACHUSETTS, Plymouth

DATE RECEIVED: 1/24/02 DATE OF PENDING LIST: 2/13/02
DATE OF 16TH DAY: 3/01/02 DATE OF 45TH DAY: 3/11/02
DATE OF WEEKLY LIST:

REFERENCE NUMBER: 02000127

REASONS FOR REVIEW:

APPEAL: N DATA PROBLEM: N LANDSCAPE: N LESS THAN 50 YEARS: N
OTHER: N PDIL: N PERIOD: N PROGRAM UNAPPROVED: N
REQUEST: N SAMPLE: N SLR DRAFT: N NATIONAL: N

COMMENT WAIVER: N

ACCEPT RETURN REJECT 3/9/02 DATE

ABSTRACT/SUMMARY COMMENTS:

Entered in the
National Register

RECOM./CRITERIA _____

REVIEWER _____ DISCIPLINE _____

TELEPHONE _____ DATE _____

DOCUMENTATION see attached comments Y/N see attached SLR Y/N



Island Grove Park NRHD
Abington, MA

Photo #1

Facing N from Bandstand area to Memorial Bridge ^(NR map 5) showing pond walls. (NR map 6)
Refreshment Stand (NR map 3) and Bath House (NR map 4) visible in tree grove to right.

Candace Jenkins
Belmont, MA
May, 2001



Island Grove Park NRHS

Photo #2

Abington, MA

Facing S from Memorial Bridge to Bandstand Base (NR map a) showing pond walls (NR map e):
Refreshment Stand (NR map 3) visible in tree grove to left (NR map

Candace Jenkins

Belmont, MA

May, 2001



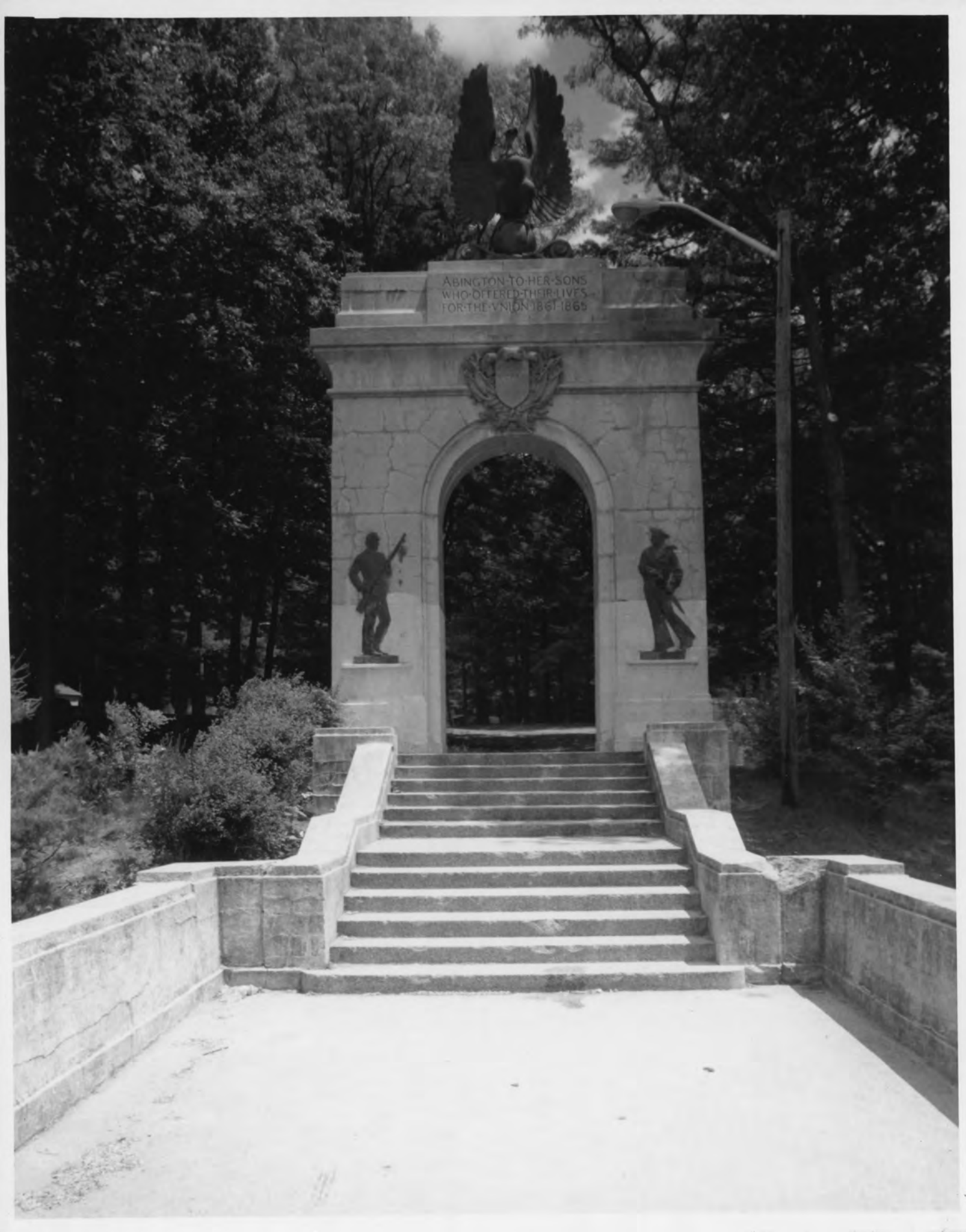
Island Grove Park NPHS
Abington, MA

Photo #3

Facing N to Swimming Pond (NR map 11) and Tree Grove (NR map 17) in Abolitionist meeting
site area

Candace Jenkins
Belmont, MA

May 2001



ABINGTON TO HER SONS
WHO OFFERED THEIR LIVES
FOR THE UNION 1861-1865

Island Grove NRHD
Abington, MA

Photo #4

Facing E to Memorial Arch (NR map #6) from Memorial Bridge (NR map 5)

Candace Jenkins
Belmont, MA
May 2001

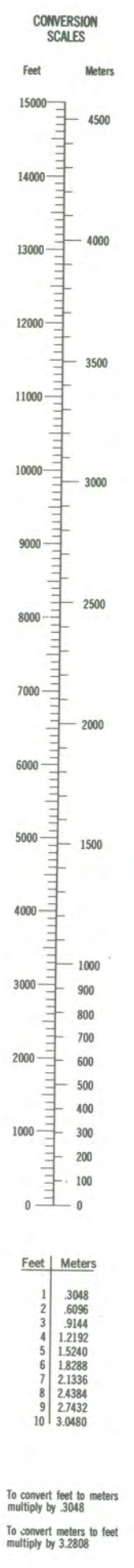
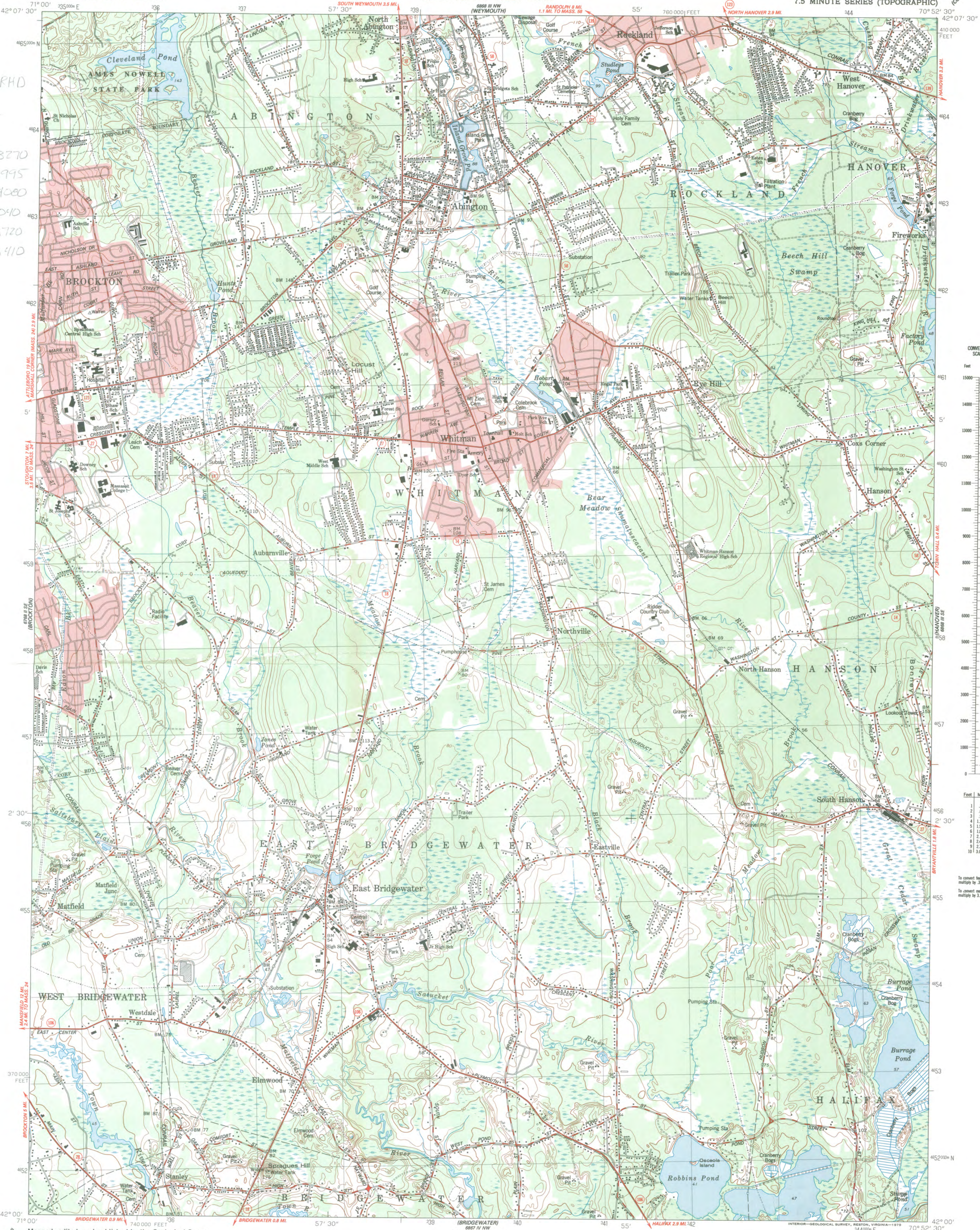


Island Grove NRHD
Abington, MA

Photo #5

Facing N to concrete bench (NR map #19) and part of Gazebo (NR map #10) in Tree Grove (NR map 17)

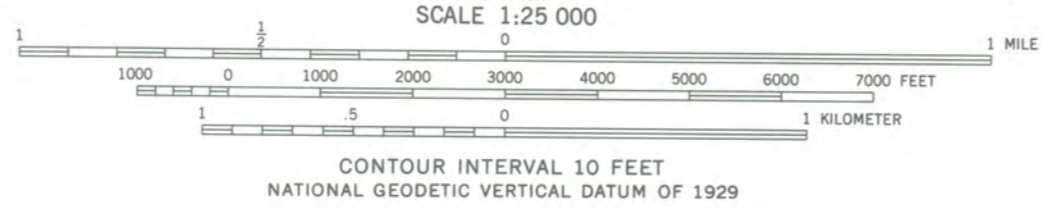
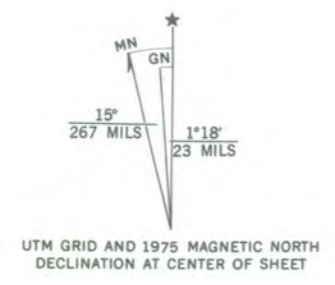
Candace Jenkins
Belmont, MA
May 2001



To convert feet to meters multiply by 3.048
To convert meters to feet multiply by 3.2808

Island Grove Park NPHD
Abington, Mass:
Norfolk County
UTMs:
① 19/339480/4663270
② 19/339375/4663945
③ 19/339570/4664080
④ 19/339790/4664040
⑤ 19/339840/4663720
⑥ 19/339800/4663410

Mapped, edited, and published by the Geological Survey
Control by USGS, NOS/NOAA, and Massachusetts Geodetic Survey
Planimetry by photogrammetric methods from aerial photographs
Topography by plane-table surveys 1935-1936.
Revised from aerial photographs taken 1974. Field checked 1975
Polyconic projection. 1927 North American datum
10,000-foot grid ticks based on Massachusetts coordinate system,
mainland zone
1000-meter Universal Transverse Mercator grid,
zone 19
Red tint indicates areas in which only landmark buildings are shown



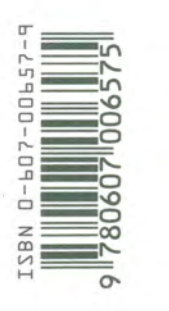
ROAD CLASSIFICATION
Primary highway, hard surface ——— Light-duty road, hard or improved surface ———
Secondary highway, hard surface ——— Unimproved road ———
○ Interstate Route □ U. S. Route ○ State Route

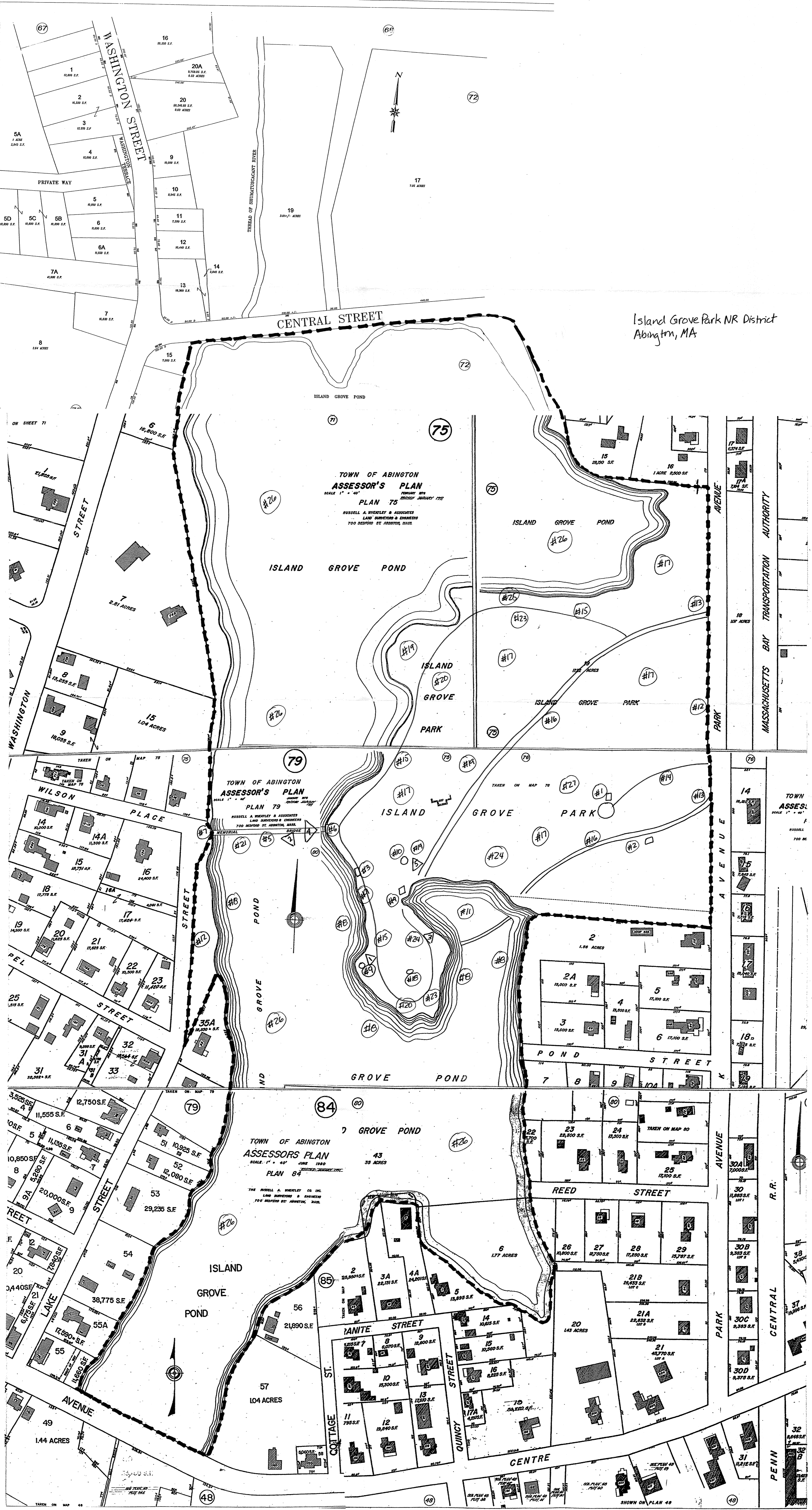
THIS MAP COMPLIES WITH NATIONAL MAP ACCURACY STANDARDS
FOR SALE BY U. S. GEOLOGICAL SURVEY, RESTON, VIRGINIA 22092
A FOLDER DESCRIBING TOPOGRAPHIC MAPS AND SYMBOLS IS AVAILABLE ON REQUEST

WHITMAN, MASS.
N4200—W7052.5/7.5

1977
AMS 6868 III SW—SERIES V814

X40191





Island Grove Park NR District
Abington, MA

TOWN OF ABINGTON
ASSESSOR'S PLAN
SCALE 1" = 40'
PLAN 75
RUSSELL A. WHEATLEY & ASSOCIATES
LAND SURVEYORS & ENGINEERS
700 BEDFORD ST. ABINGTON, MASS.

TOWN OF ABINGTON
ASSESSOR'S PLAN
SCALE 1" = 40'
PLAN 79
RUSSELL A. WHEATLEY & ASSOCIATES
LAND SURVEYORS & ENGINEERS
700 BEDFORD ST. ABINGTON, MASS.

TOWN OF ABINGTON
ASSESSOR'S PLAN
SCALE 1" = 40'
PLAN 84
RUSSELL A. WHEATLEY & ASSOCIATES
LAND SURVEYORS & ENGINEERS
700 BEDFORD ST. ABINGTON, MASS.

MASSACHUSETTS BAY TRANSPORTATION AUTHORITY

TOWN ASSES.
SCALE 1" = 40'
RUSSELL
700 BE

PENN CENTRAL R.R.

SHOWN ON PLAN 48



The Commonwealth of Massachusetts
William Francis Galvin, Secretary of the Commonwealth
Massachusetts Historical Commission

January 9, 2002

Ms. Carol Shull
National Register of Historic Places
Department of the Interior
National Park Service
Mail Stop 2280, Suite 400
1849 C Street, NW
Washington, DC 20240

Dear Ms. Shull:

Enclosed please find the following nomination form:

Island Grove Park HD, Abington (Plymouth), MA

The nomination has been voted eligible by the State Review Board and has been signed by the State Historic Preservation Officer. The owners of the property were notified of pending State Review Board consideration 30 to 45 days before the meeting and were afforded the opportunity to comment.

Sincerely,

Betsy Friedberg
National Register Director
Massachusetts Historical Commission

enclosure

cc: Robyn Fernald, Abington Historical Commission
Kevin Donovan, Chair, Board of Selectmen
Candace Jenkins, Shary Page Berg, Preservation Consultants
Wayne Smith, Abington Planning Board