



UNITED STATES DEPARTMENT OF THE INTERIOR
NATIONAL PARK SERVICE

NATIONAL REGISTER OF HISTORIC PLACES
PROPERTY PHOTOGRAPH FORM

(Type all entries - attach to or enclose with photograph)

STATE

Florida

COUNTY

Leon

FOR NPS USE ONLY

ENTRY NUMBER

DATE

MAY 7 1973

1. NAME

COMMON: Florida's Historic Capitol

AND/OR HISTORIC: The Capitol

2. LOCATION

STREET AND NUMBER:

South Monroe Street

CITY OR TOWN:

Tallahassee

STATE:

Florida

CODE

12

COUNTY:

Leon

3. PHOTO REFERENCE

PHOTO CREDIT: Florida New Bureau

DATE OF PHOTO: 1971

NEGATIVE FILED AT:

Department of Commerce

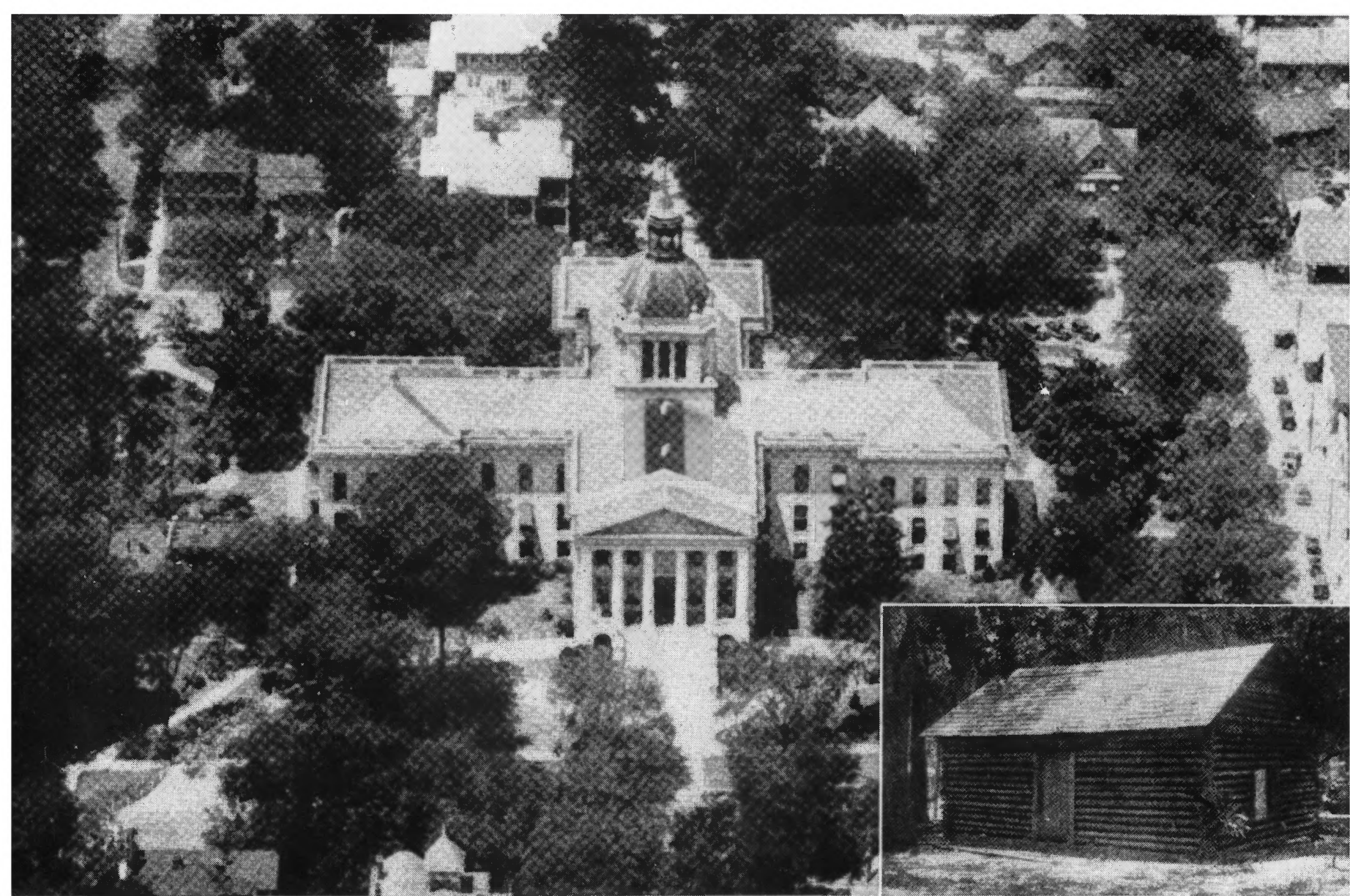
4. IDENTIFICATION

DESCRIBE VIEW, DIRECTION, ETC.

Main facade of Capitol showing east portico and dome.



SEE INSTRUCTIONS



AIR VIEW OF STATE CAPITOL, AND ORIGINAL LOG CABIN CAPITOL OF 106 YEARS AGO





